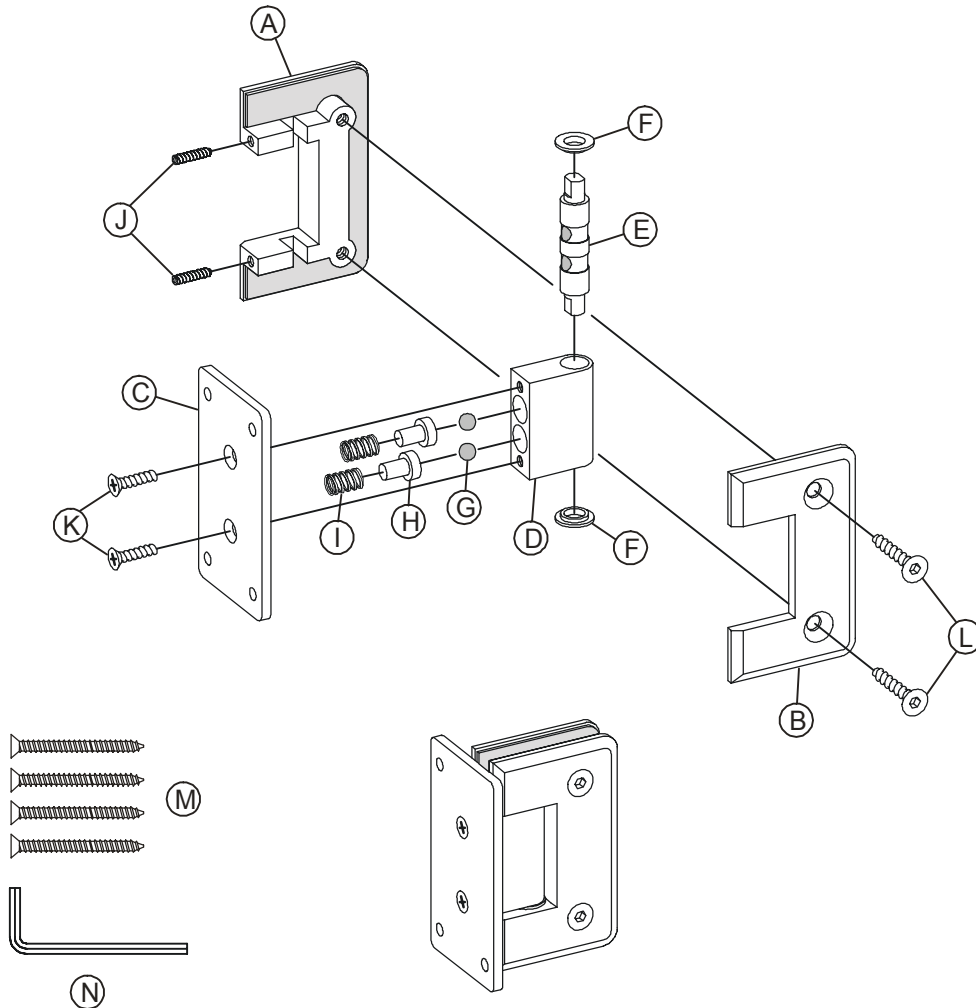


HEAVY GLASS HINGE

INSTALLATION INSTRUCTIONS

Tel: 800-643-1514

www.alumaxshowerdoor.com



HINGE PARTS LIST

- | | |
|----------------------------------|-----------------------|
| A. 1 Stationary Leaf With Gasket | I. 2 Spring |
| B. 1 Hinge Leaf With Gasket | J. 2 Set Screw |
| C. 1 Back Plate | K. 2 Back Plate Screw |
| D. 1 Housing | L. 2 Hinge Leaf Screw |
| E. 1 Bushing | M. 4 #10 x 2" Screw |
| F. 2 Nylon Insert | N. 1 Allen Wrench |
| G. 2 Bearing | |
| H. 2 Plastic Piston | |

Three-Year Limited Residential Warranty

Alumax Bath Enclosures by Sapa is pleased to warrant to its dealers and residential customers that the products supplied by it shall be free from defects in material and workmanship for three (3) years from purchase of the product, provided they are installed and maintained according to the manufacturer's recommended practices and installation instructions.¹ The Alumax Limited Warranty applies to the original residential owner only, and is not transferable.

**Proof of Purchase and/or Registration of the product required for warranty coverage.
Registration instructions accompany the product or available at www.alumaxshowerdoor.com.**

What Will Alumax Do?

Alumax will repair or replace, at its discretion, any product found to be defective in material or workmanship during the applicable warranty period. Labor is not included. In the case of discontinued products subject to warranty coverage, Alumax reserves the right to substitute comparable product of equivalent function.

What is Not Covered?

This limited warranty applies only to materials and workmanship supplied by Alumax. This limited warranty does not cover glass (claims of glass breakage are excluded) or outside fabrication provided by others. It excludes all wear items and does not cover defects caused by improper installation of the product. Laws and building and safety codes governing the design and use of bathrooms vary widely. Alumax does not control the selection of product, configurations, operating hardware or glazing materials, and assumes no responsibility for such.

ALUMAX DOES NOT MAKE ANY OTHER REPRESENTATIONS OR WARRANTIES, EXPRESS OR IMPLIED, INCLUDING, BUT NOT LIMITED TO, ANY IMPLIED WARRANTY OF MERCHANTABILITY OR ANY IMPLIED WARRANTY OF FITNESS FOR A PARTICULAR PURPOSE. TO THE EXTENT ANY IMPLIED WARRANTIES ARE IMPLIED UNDER STATE LAW, SUCH WARRANTIES ARE LIMITED TO THE DURATION OF THE APPLICABLE LIMITED WARRANTY TIME FRAME OF THREE (3) YEARS.

IN NO EVENT SHALL ALUMAX BE LIABLE FOR SPECIAL, DIRECT, INDIRECT, OR CONSEQUENTIAL DAMAGES, INCLUDING, BUT NOT LIMITED TO, LOSS OF USE OR PROFITS, PERSONAL INJURY, OR DAMAGE TO OTHER PROPERTY.

Some states do not allow the exclusion or limitation of implied warranties, or the exclusion or limitation of special, incidental or consequential damages, therefore these limitations and exclusions may not apply to you.

This warranty gives you specific legal rights, and you may also have other rights which vary from state to state.

How do You Get Warranty Assistance?

To make a claim under the terms of this Limited Warranty, contact your local Alumax Dealer or call or write Alumax Consumer Service at 800-643-1514, 248 W. Greene St., Magnolia, AR 71753. Proof of Purchase and/or Registration of the product is required for warranty coverage.

¹ The manufacturer's recommended practices and installation instructions are available at www.alumaxshowerdoor.com, by contacting your local Alumax Dealer, or by calling or writing Alumax Customer Service at 800-643-1514, 248 W. Greene St., Magnolia, AR 71753.

!WARNINGS!

Alumax Bath Enclosures by Sapa are intended to be installed by experienced installers. If you need assistance with installation, or locating an experienced installer, contact Alumax Consumer Service at 800-643-1514. Ensure that the bath enclosure is installed appropriately. Improper installation can lead to breakage, damage or improper performance of the bath enclosure.

Wear safety glasses when drilling or cutting to avoid injury to the eyes.

When drilling holes in ceramic tile or marble, use a center punch and hammer to carefully break the surface glaze so the drill can start without skidding. A skidding drill can cause damage to the surface and can be dangerous (risk of personal injury).

Use caution and proper technique whenever using tools to avoid damage to property and/or personal injury.

Shower doors are not water-tight. They are designed to prevent leaks under normal shower conditions. Excessive water pressure or directing the shower directly at the door can result in leaks.

Do not hang on towel bars or handles or use them to support your weight getting in and out of the bathtub or shower. Towel bars and handles are not intended to be used as grab bars for assistance getting in and out of the shower or bathtub. They are not intended to support a person's weight and could break.

Do not use excessive force when opening and closing shower doors. Excessive force could lead to glass breakage or other damage to the enclosure.

!GLASS WARNINGS!

TEMPERED GLASS CANNOT BE CUT. Attempting to cut tempered glass will result in the glass breaking or shattering.

USE CAUTION WHEN HANDLING GLASS PANELS. Safety tempered glass is very resistant to breakage, but it can still break if unequal pressure is placed on it during installation (or if cutting of the glass is attempted). In addition, the sharp corners of the panels can damage tile and floor coverings or cause injury.

BEFORE BEGINNING INSTALLATION

Unpack your unit carefully and inspect for freight damage. Lay out and identify all parts using the instruction sheets as a reference. Before discarding the carton, check for small hardware bags that tend to fall into the bottom of the box. If any parts are damaged or missing, refer to the descriptions noted in the instructions when contacting your dealer for replacements.

To install your Alumax Bath Enclosure by Sapa, you will need the following: tape measure, level, #2 Phillips screwdriver, flat screwdriver, drill, 1/8", 7/64" and 3/16" drill bits, hacksaw, pencil, and caulking (clear silicone recommended). Optional tools include a miter box for cutting parts to length, files, center punch and masking tape.

NOTE: Before beginning installation, check the tub rim for level and both walls for plumb. If either are off more than ¼" to 3/8", you may want to contact your dealer for tapered fillers which can be used to level the tub track or plumb the wall jams.

CARE AND CLEANING

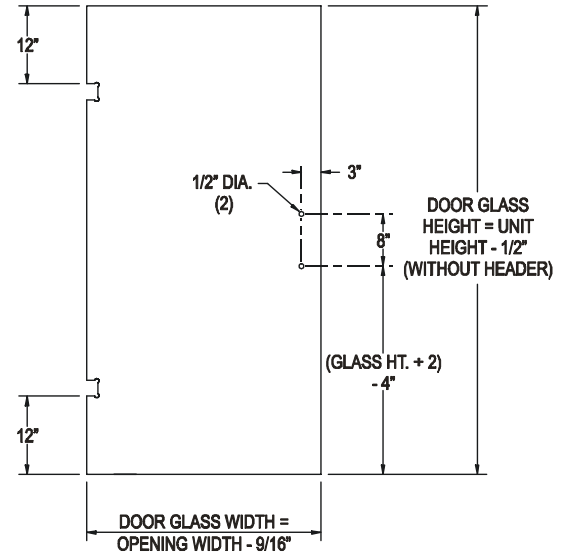
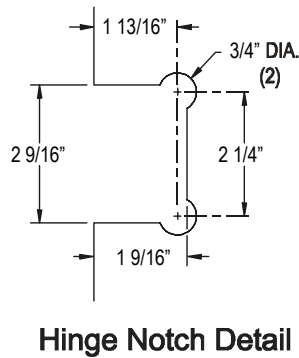
The simplest and preferred method of cleaning your unit is by washing it with clean water and drying with a soft cloth.

If soil is still present after drying, a non-abrasive cleanser with a pH of seven to eight may be used. Comet Bathroom Cleaner® has been tested and is recommended by the Bath Enclosure Manufacturers Association (BEMA).

DO NOT USE SCOURING PADS, SHARP INSTRUMENTS, BLEACH OR ACID-BASED CLEANSERS TO CLEAN THE UNIT AS THEY MAY DAMAGE THE UNIT.

1

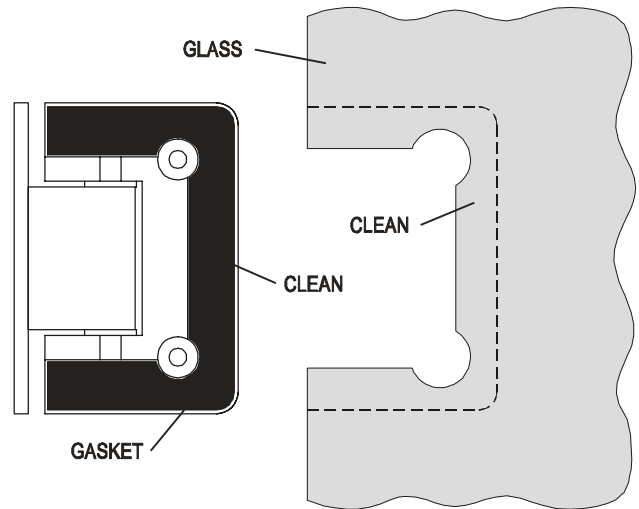
Note glass cut out dimensions. Double check these dimensions before proceeding.



2

Unscrew the two hinge leafscrews (L) and remove hinge leaf (B). Clean the glass and gasket surfaces with alcohol. (For the gasket to hold properly, the glass and gasket surfaces must be cleaned to remove the sodium dioxide lubricants used in tempering furnaces.)

Note that the hinge mounting is a compression fit. The glass surface must be free of debris or oil before application and hinge must be secured tightly enough to prevent slippage. If glass with water repellent coating is used the hinge mounting area of the glass must be masked off prior to installation.



3

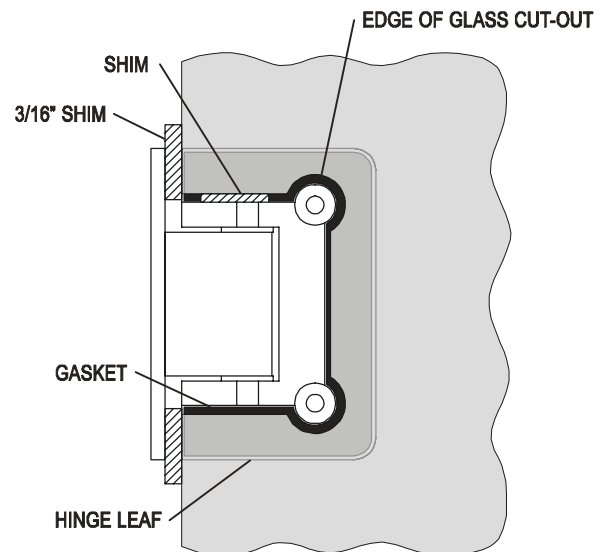
Center the stationary leaf (A) in the cutout so that hinge leaf mounting screws (L) will be inside of unit.

TIP: If the hinge is loose in the cutout, insert a shim between the stationary leaf (A) and the top edge of the glass cutout to prevent the glass from shifting or dropping over time.

Insert two 3/16" shims between the back plate (C) and the edge of the glass to assure the hinge is square to the glass. (Remove after you have reattached the hinge leaf.)

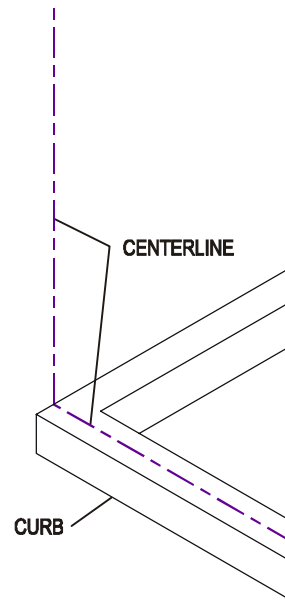
Screw the hinge leaf (B) back onto the hinge with the two hinge leafscrews (L). Use an allen wrench to tighten them down. **NEVER USE A POWER DRILL.** Brass is relatively soft and you may strip the screws or over torque which will cause the hinge to flex and lose its holding power.

Tighten the screws evenly, back and forth between screws, for a tighter fit to glass.



4

Check your walls with a straight edge. If the mounting is irregular the hinge may not function properly. Determine the centerline of the door area and mark the curb with a pencil or chalkline. *Masking tape may be used on hard-to-mark surfaces such as ceramic tile or marble.* Locate and mark a **plumb** centerline on the wall surface intersecting the centerline on the curb of the opening.



5

NOTE: Because mounting conditions vary, it is the responsibility of the installer to determine the appropriate drilling, fasteners and installation of the hinges. Alumax advises the following procedure and has supplied eight #10 x 2" mounting screws, but does not imply that this is the preferred mounting method for any given application.

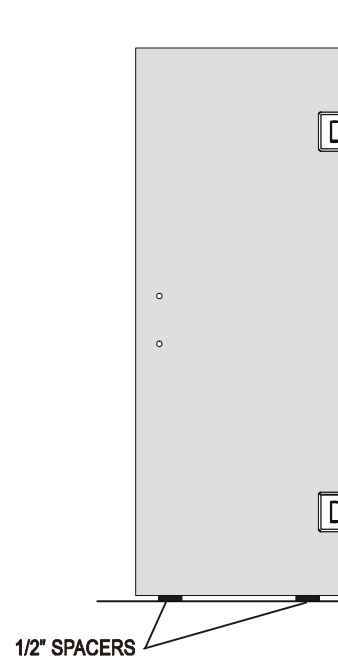
Set panel on two 1/2" spacers a few inches in from each edge of glass.

MUST BE SOLID WOOD STRUCTURE BEHIND WALL COVERING TO HOLD WEIGHT OF DOOR.

With hinge against wall, mark one hole on the top hinge to the surface of the wall. (Check wall surface where holes are going to line up. You don't want to drill on a corner or the extreme edge of a tile if you can help it.)

Remove panel and drill hole through tile using a 1/4" bit, then drill hole into wall using a 1/8" bit. (It is the responsibility of the installer to establish the condition to which the hinge is being mounted and to select the proper fasteners). #10 x 2" screws (**M**) are supplied but substitutions may be required as determined by wall conditions.

TIP: It is a good idea to pre-thread holes with a standard hardware screw so you don't damage the decorative screw head supplied with the hinge. Use of common bar soap on the threads of the decorative screws will reduce the amount of torque required to tighten the screws.



6

Set panel back on spacers and screw one screw into the hole you drilled on the top hinge. Set your panel plumb with a level. Mark the rest of the holes, remove panel and drill all the holes.

Add a small amount of silicone to each hole.

You may want to cover the hinge leafs (**A** and **B**) and back plate (**C**) with masking tape to prevent scratching with the screwdriver, drill or drill bit.

Set panel back on spacers and screw in all the screws with a screwdriver. (It is not recommended that you use a power drill. If you do, you **MUST** use a screw bit that is at least 4"-5" long so you don't scratch the surface of the hinge. There is not enough room for a standard screw bit.)

