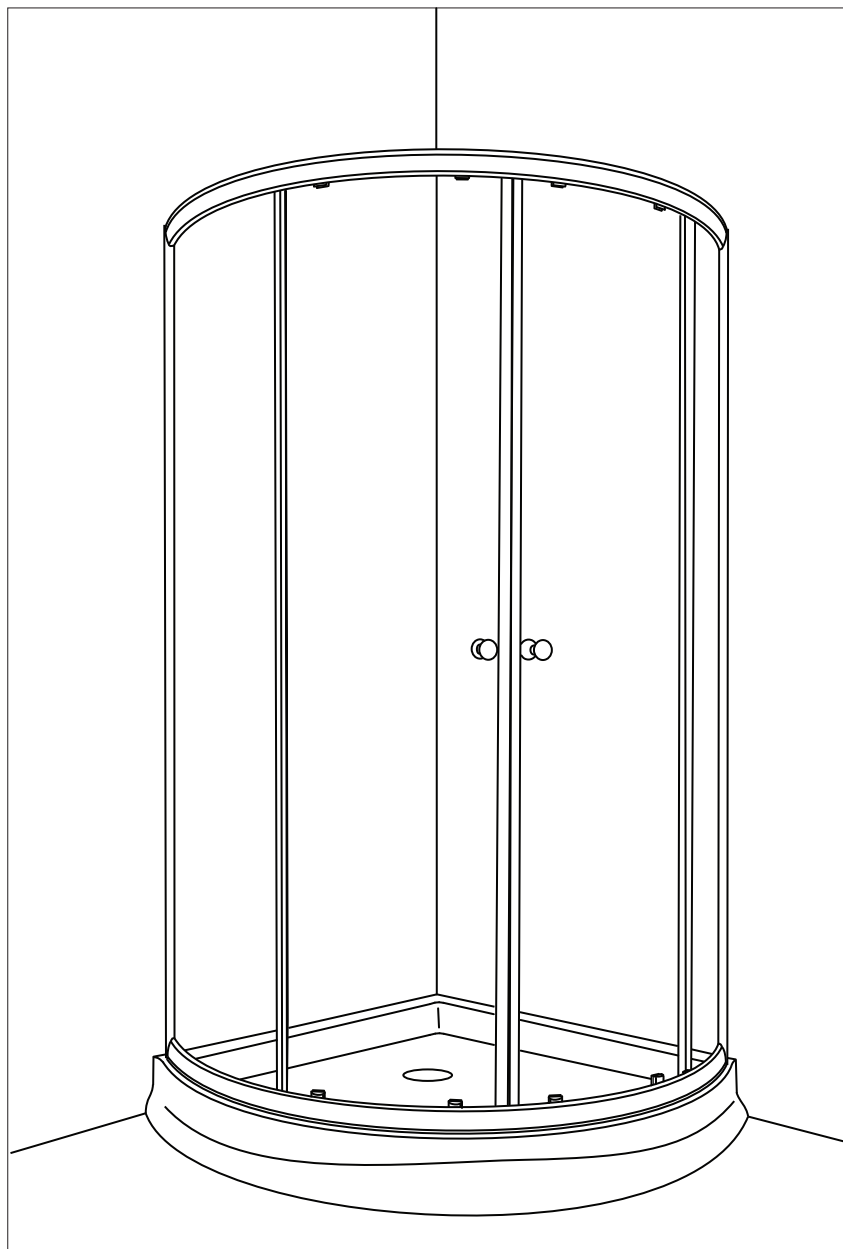


K-KA4Z - Kona

INSTRUCTION MANUAL

 **ALUMAX**
Kula Collection

KONA CURVED GLASS SLIDING SHOWER DOOR





Please keep this manual and product code number for future reference
and replacement parts ordering if necessary.

READ CAREFULLY AND COMPLETELY BEFORE PROCEEDING

IT IS RECOMMENDED THAT YOU WEAR SAFETY GLASSES AT ALL TIMES DURING INSTALLATION

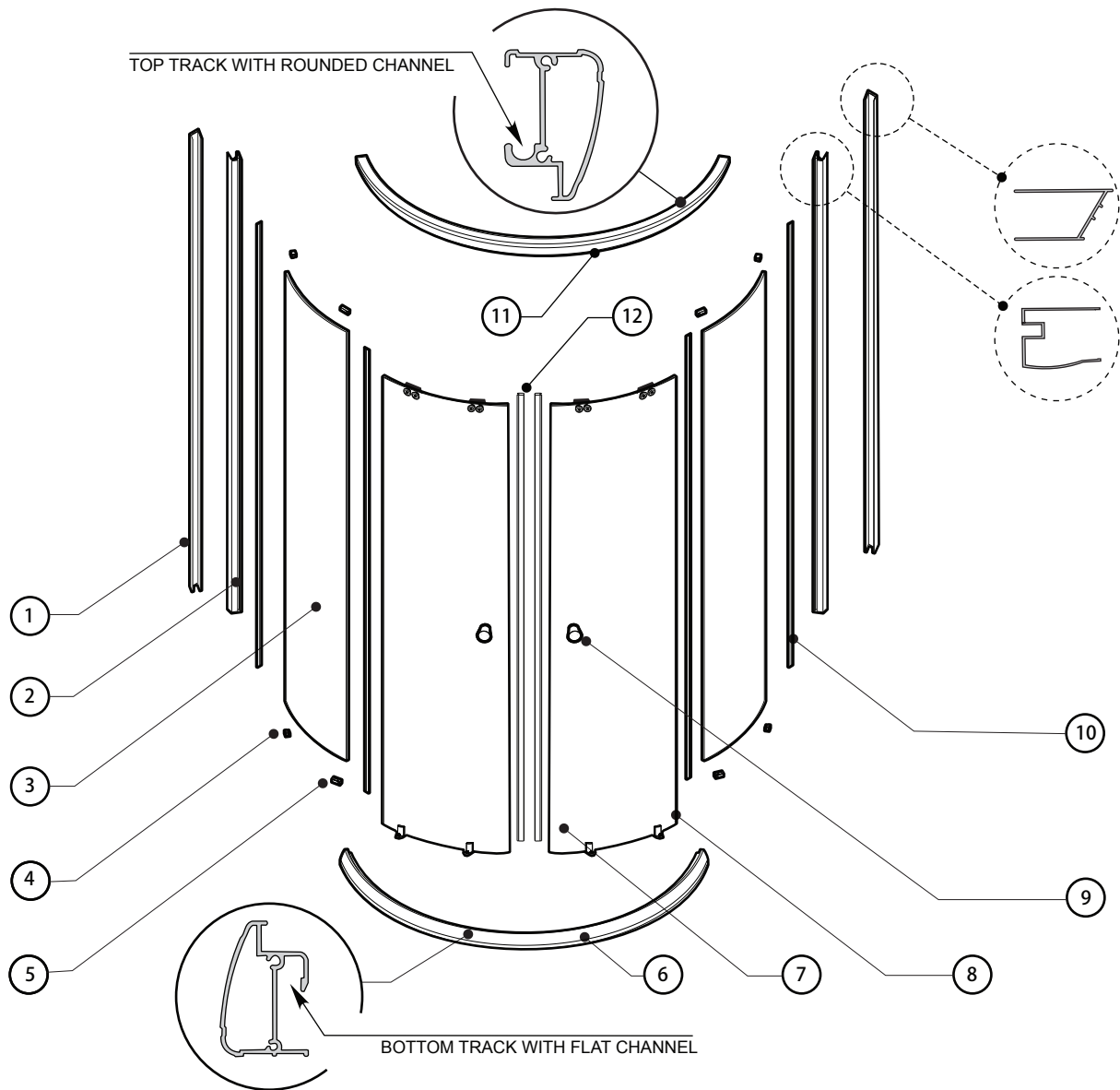
INSTALLATION OVER CERAMIC TILE

If your shower door is to be installed over ceramic tile, tile should extend completely under both wall jambs. Silicone should be used to seal the line where ceramic tile meets the base.

HOW TO CARE FOR YOUR DOOR

Never use scouring powder pads or sharp instruments on metal work or glass panels. An occasional wiping down with a mild detergent diluted in water is all that is needed to keep the panels and aluminum parts looking new.

Product specifications are subject to change without notice.



1 WALL JAMB (2)

2 EXPANDER (2)

3 FIXED PANEL (2)

4 GLASS SUPPORT /L (4)

5 GLASS SUPPORT /R (4)

6 BOTTOM TRACK (1)

7 DOOR PANEL (2)

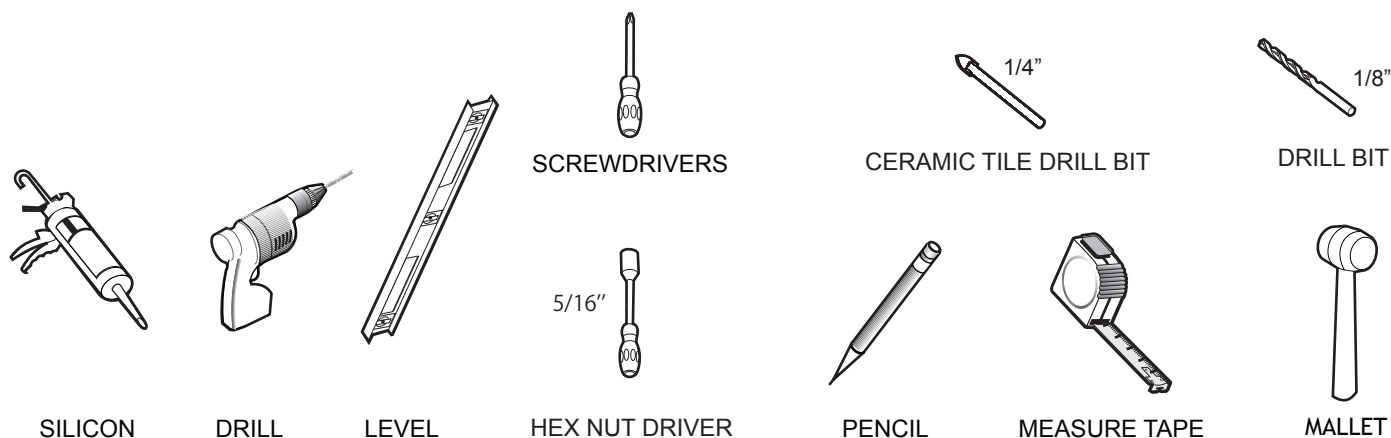
8 SIDE GASKET (4)

9 SET OF HANDLES (2)


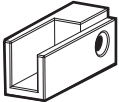

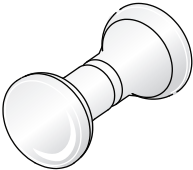
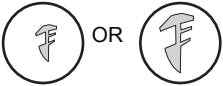





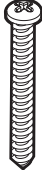
10 SIDE GASKET WALL JAMB SIDE (2)

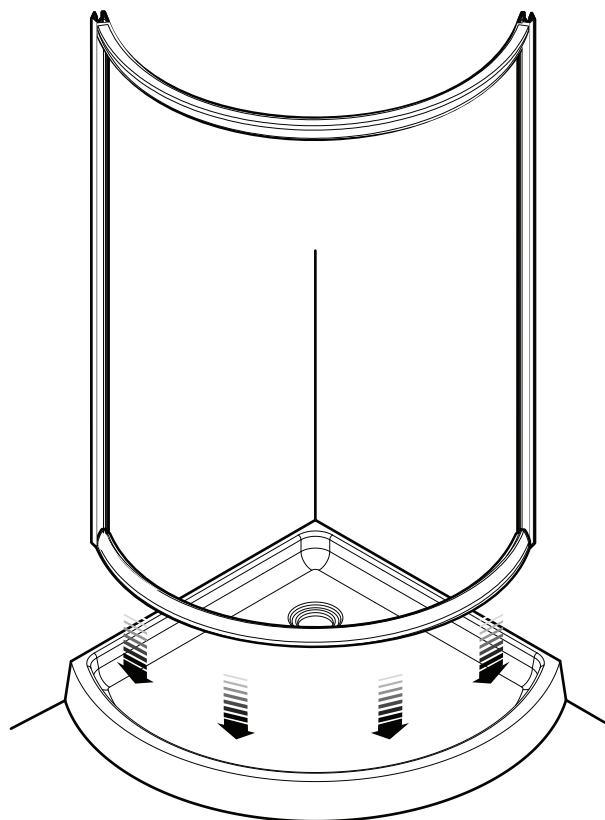
11 TOP TRACK (1)

12 MAGNET GASKET (2)

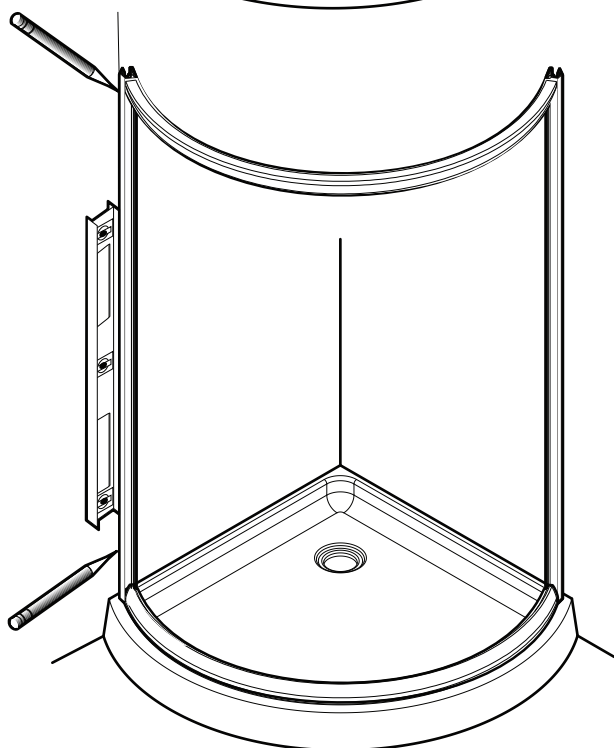


PACKAGING CHECK LIST & HARDWARE

<p>4</p>  <p>GLASS SUPPORT /L (4)</p>	<p>5</p>  <p>GLASS SUPPORT /R (4)</p>	<p>8</p>  <p>SIDE GASKET 4)</p>	<p>9</p>  <p>SET OF HANDLES (2)</p>
<p>10</p>  <p>(FOR "PARIS POINT" GLASS ONLY)</p> <p>SIDE GASKET WALL JAMB SIDE (2)</p>	<p>12</p>  <p>MAGNETIC DOOR GASKET (2)</p>	<p>13</p>  <p>SCREW CAP (8)</p>	<p>14</p>  <p>(M4 X 8)</p> <p>SCREW 3/8" LG (8)</p>
<p>15</p>  <p>(M4 X 8)</p> <p>SCREW 1/2" LG (4)</p>	<p>16</p>  <p>WALL PLUG (8)</p>	<p>17</p>  <p>(M4 X 35)</p> <p>SCREW 1 3/8" LG (14)</p>	

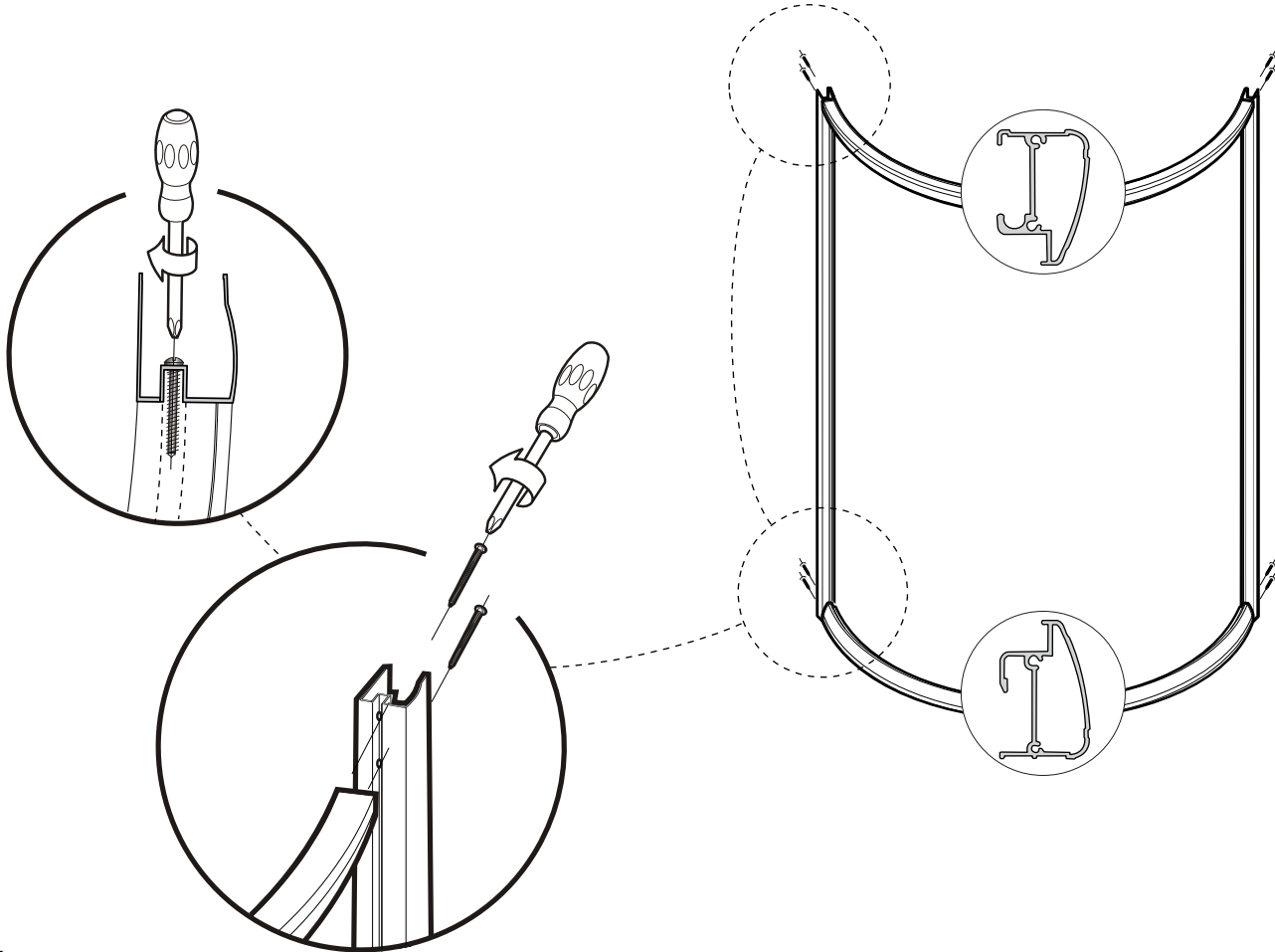
**Step****3**

- POSITION AND CENTER THE FRAME TOGETHER WITH WALLJAMBS ONTO THRESHOLD OF SHOWER BASE.

**Step****4**

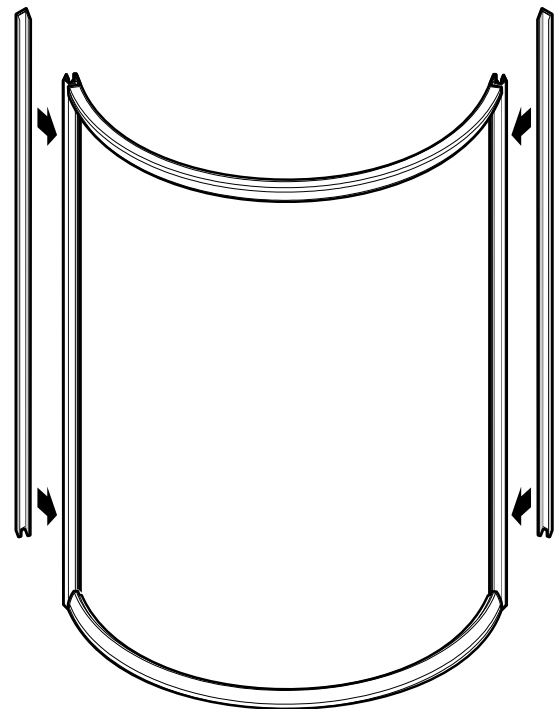
- ADJUST AND LEVEL THE FRAME ASSEMBLY.
- TRACE OUTER EDGE OF WALL JAMBS.
- REMOVE FRAME ASSEMBLY FROM BASE.

ON BOTH SIDES



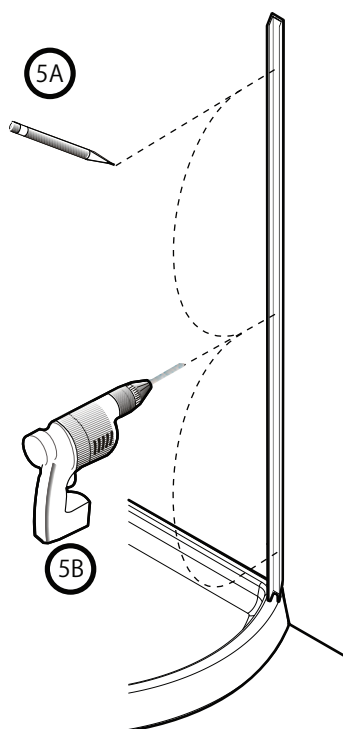
Étape / Step

- ① EXTENSEUR (2) + RAIL (2) + VIS 1 3/8" LG (8)
EXPENDER (2) + TRACK (2) + SCREW 1 3/8" LG (8)



Étape / Step

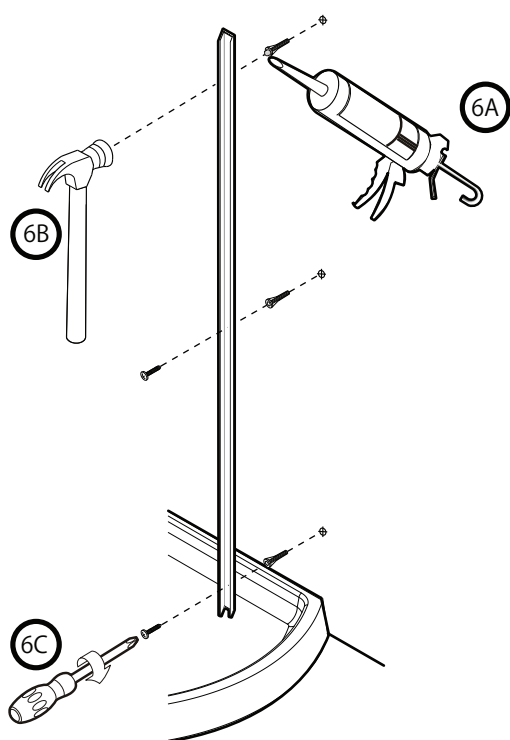
- ② INSÉREZ LES JAMBAGES TEMPORELLEMENT
INSERT WALL JAMBS TEMPORALLY



5

- REALIGN WALL JAMB WITH REFERENCE LINE (2).
- MARK DRILLING LOCATION FOLLOWING PILOT HOLES.
- DRILL HOLES BY USING SUITABLE 1/4" DRILL BIT.

ON BOTH SIDES



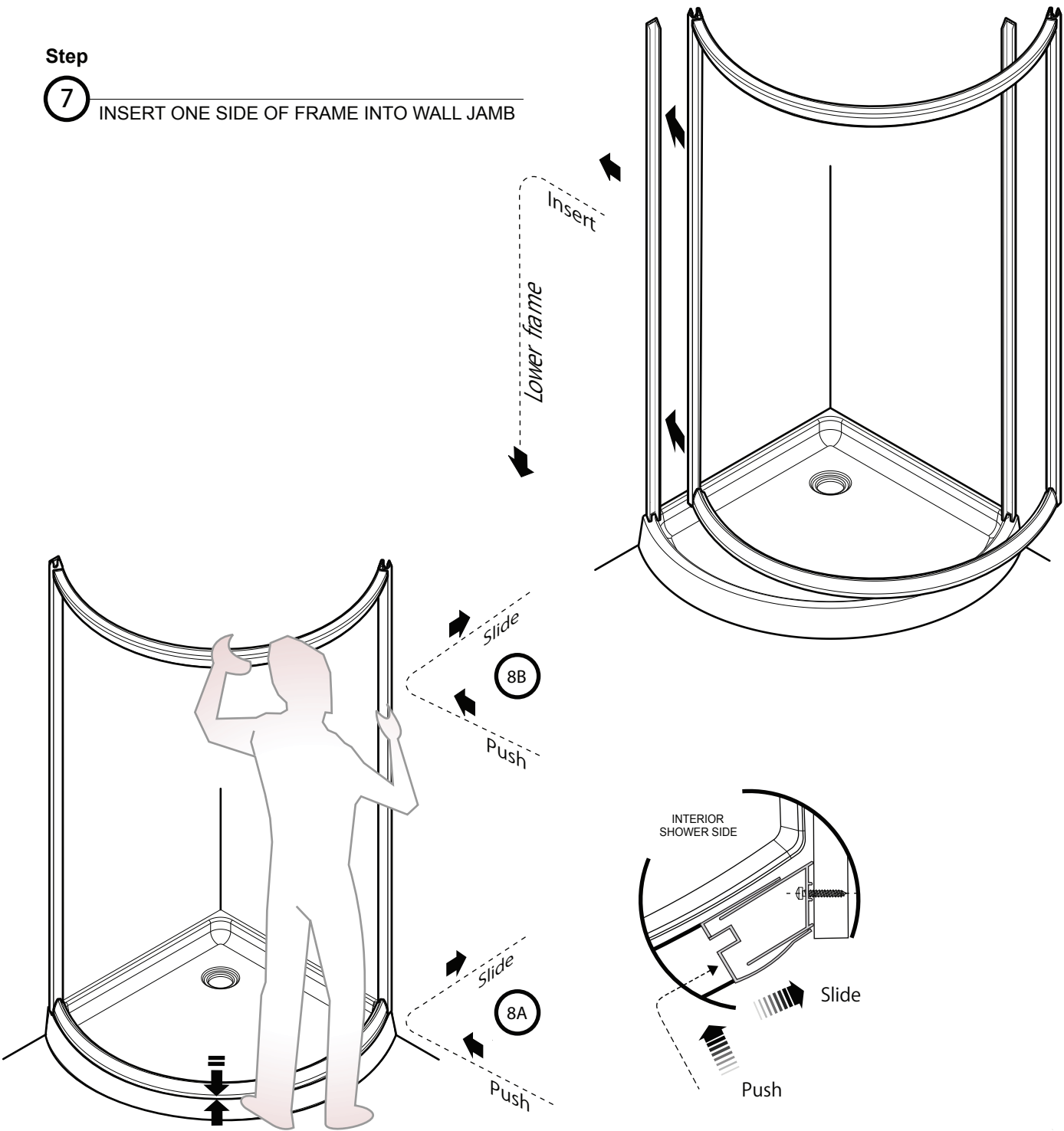
Step

6

- INSERT THE WALL PLUGS (6) AND PUT IN EACH A DROP OF SILICONE.
- SECURE THE WALL JAMB USING 1 3/8" SCREWS (6)

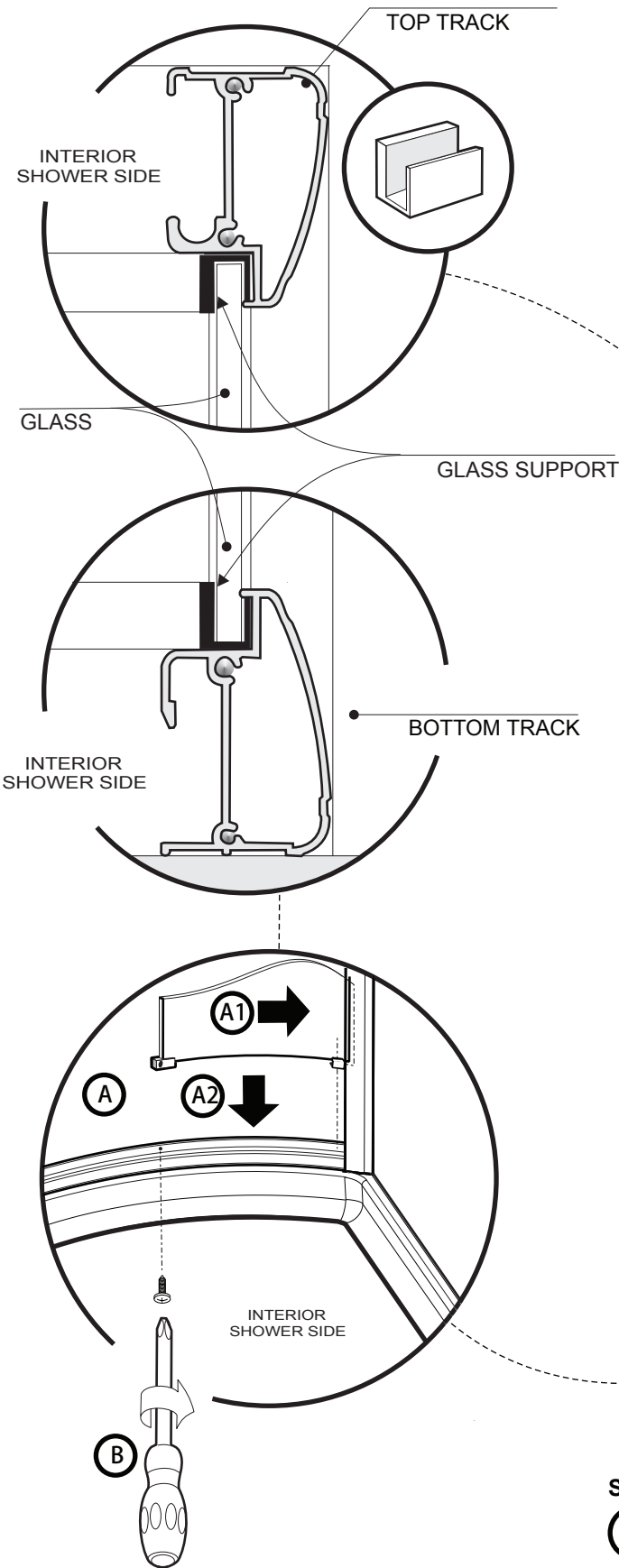
Step

7 INSERT ONE SIDE OF FRAME INTO WALL JAMB

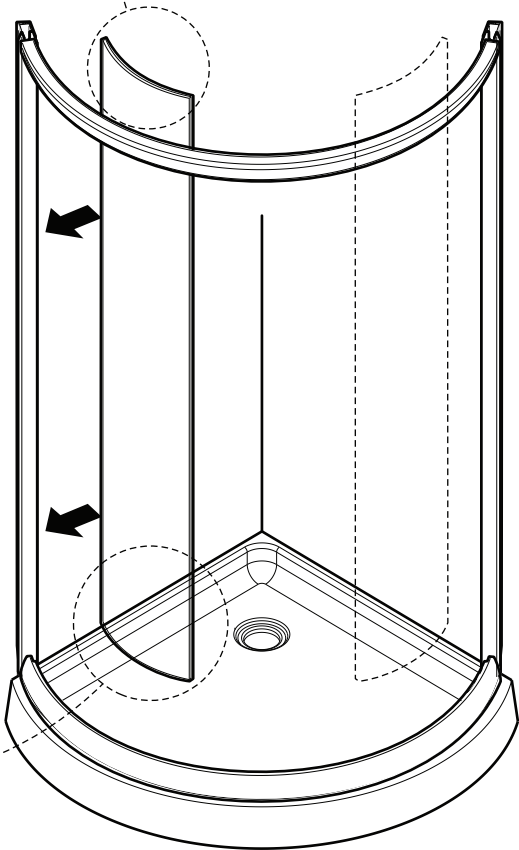


Step

8 ENGAGE THE OTHER SIDE OF FRAME INTO WALL JAMB



Step
9 FIXED PANEL (2) ON BOTH SIDE

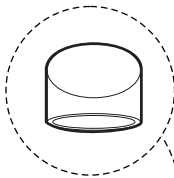


Step
10 GLASS SUPPORT (8) + SCREW 1/2" LG (8)

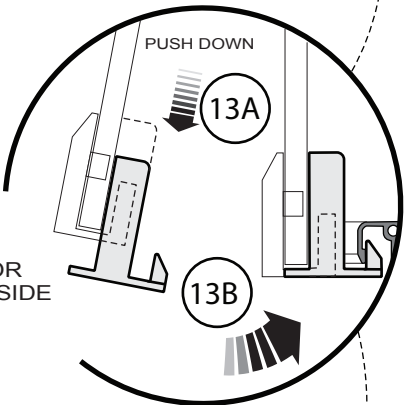
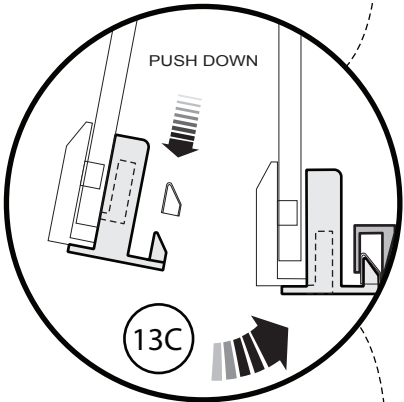
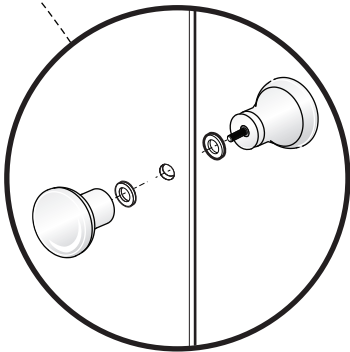
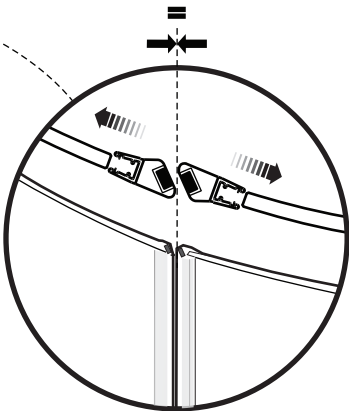
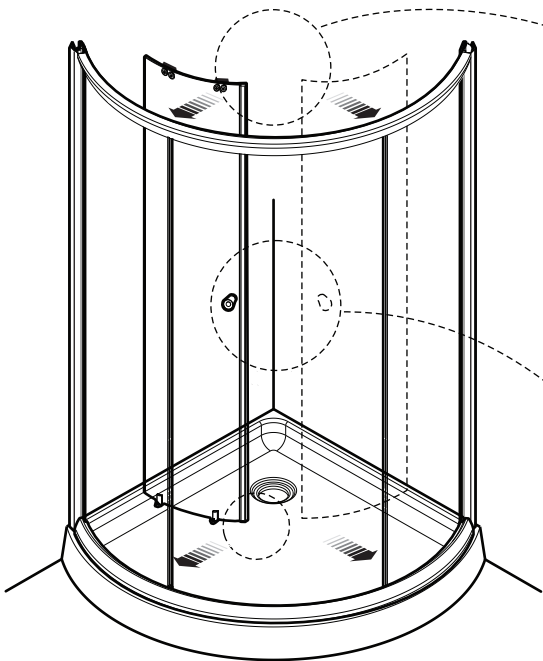
Step

11

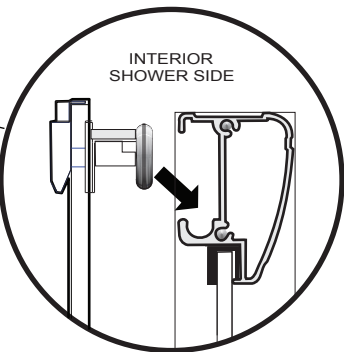
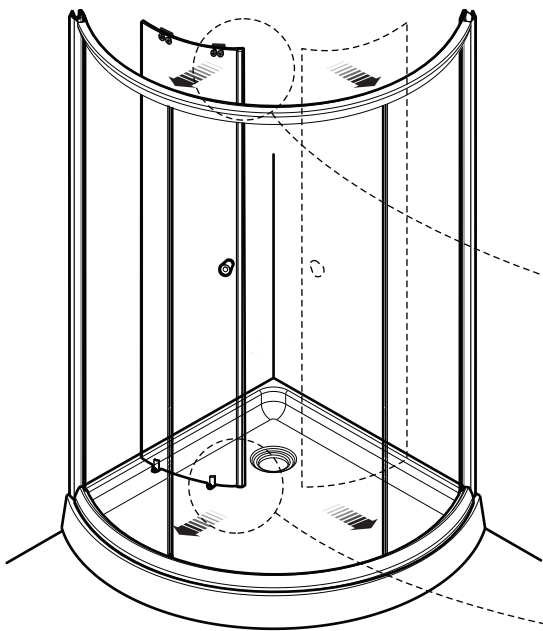
INSTALL DOOR PANELS



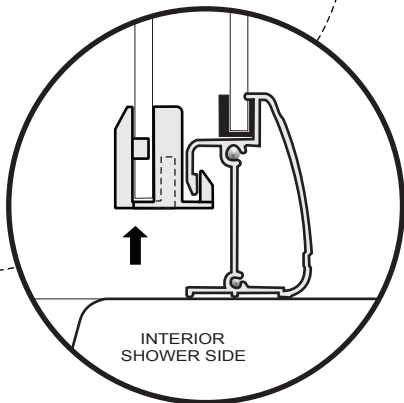
(OPTIONAL)



INTERIOR
SHOWER SIDE



INTERIOR
SHOWER SIDE



INTERIOR
SHOWER SIDE

Step

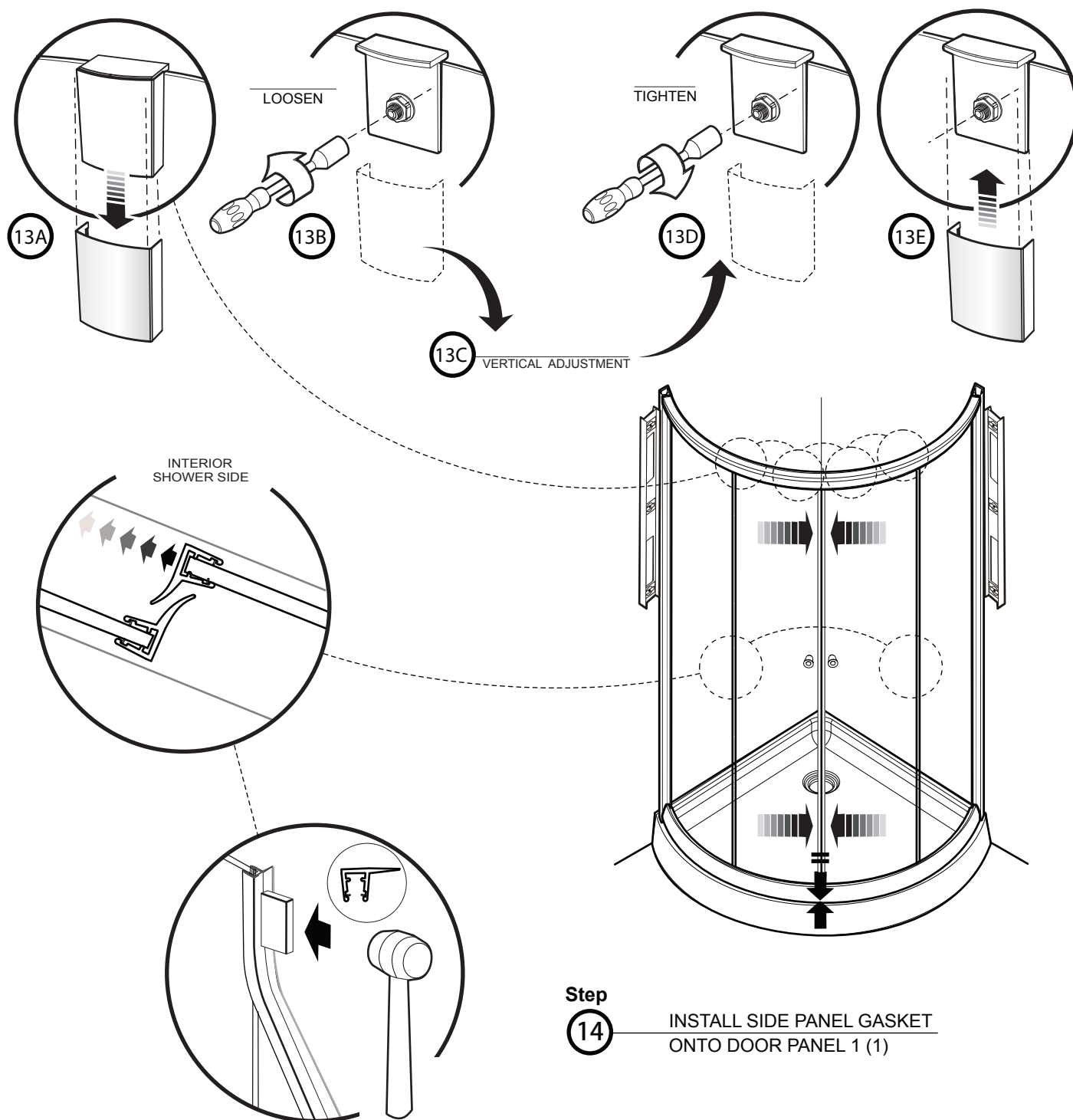
12

INSERT DOOR PANELS INTO TOP & BOTTOM TRACK

Step

13

USE HEX NUT DRIVER OR PLIERS FOR VERTICAL DOOR ADJUSTMENT



Step

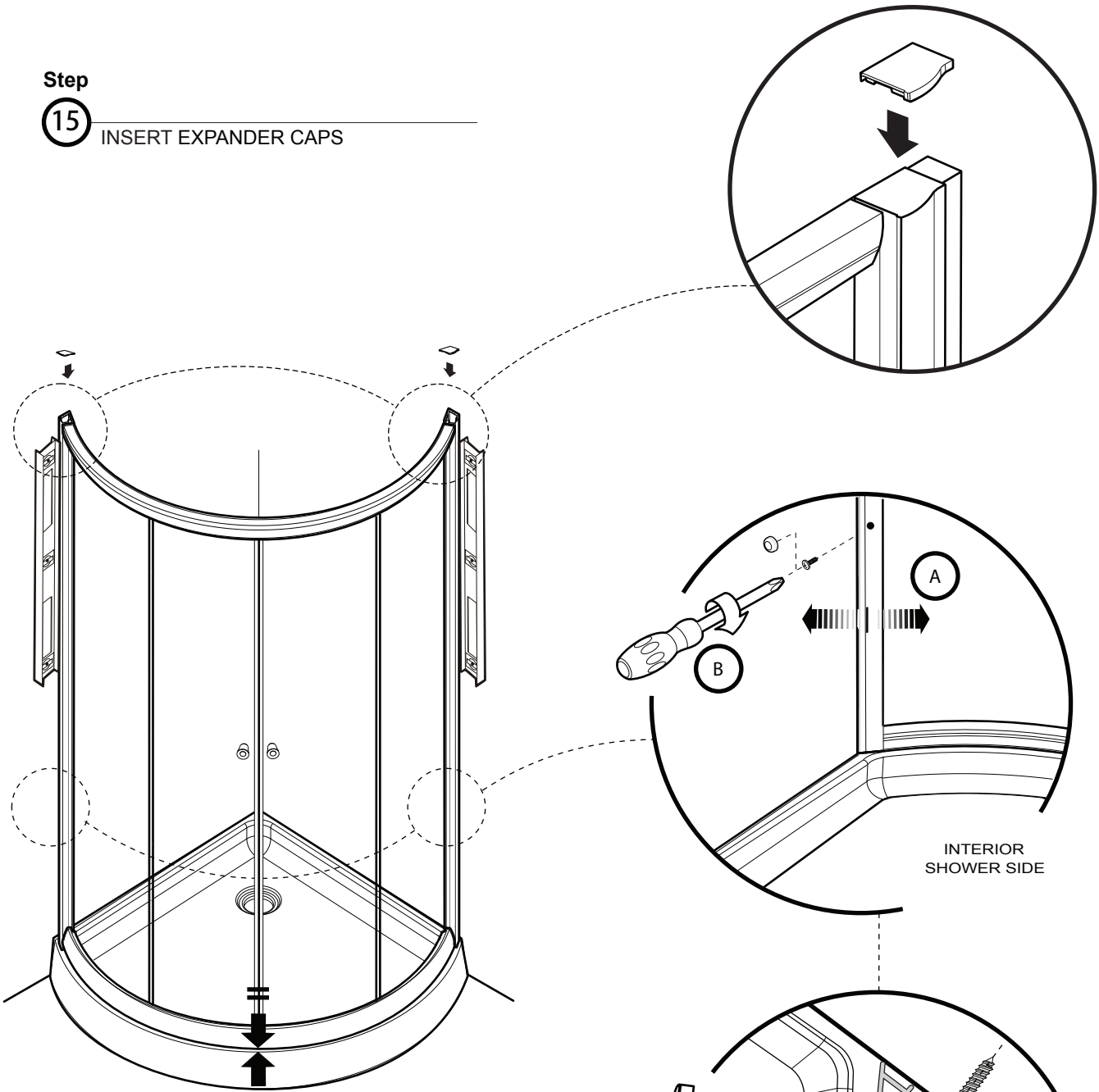
14

INSTALL SIDE PANEL GASKET
ONTO DOOR PANEL 1 (1)

Step

15

INSERT EXPANDER CAPS

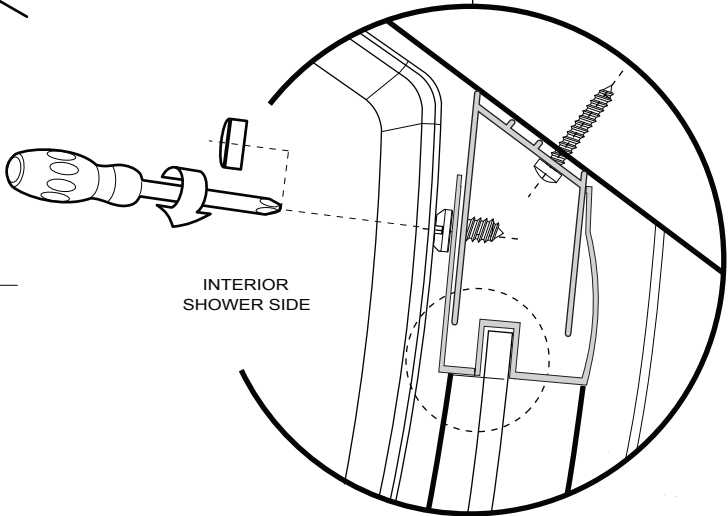


Step

16

SCREW 3/8" LG (8) + SCREW CAP (8)

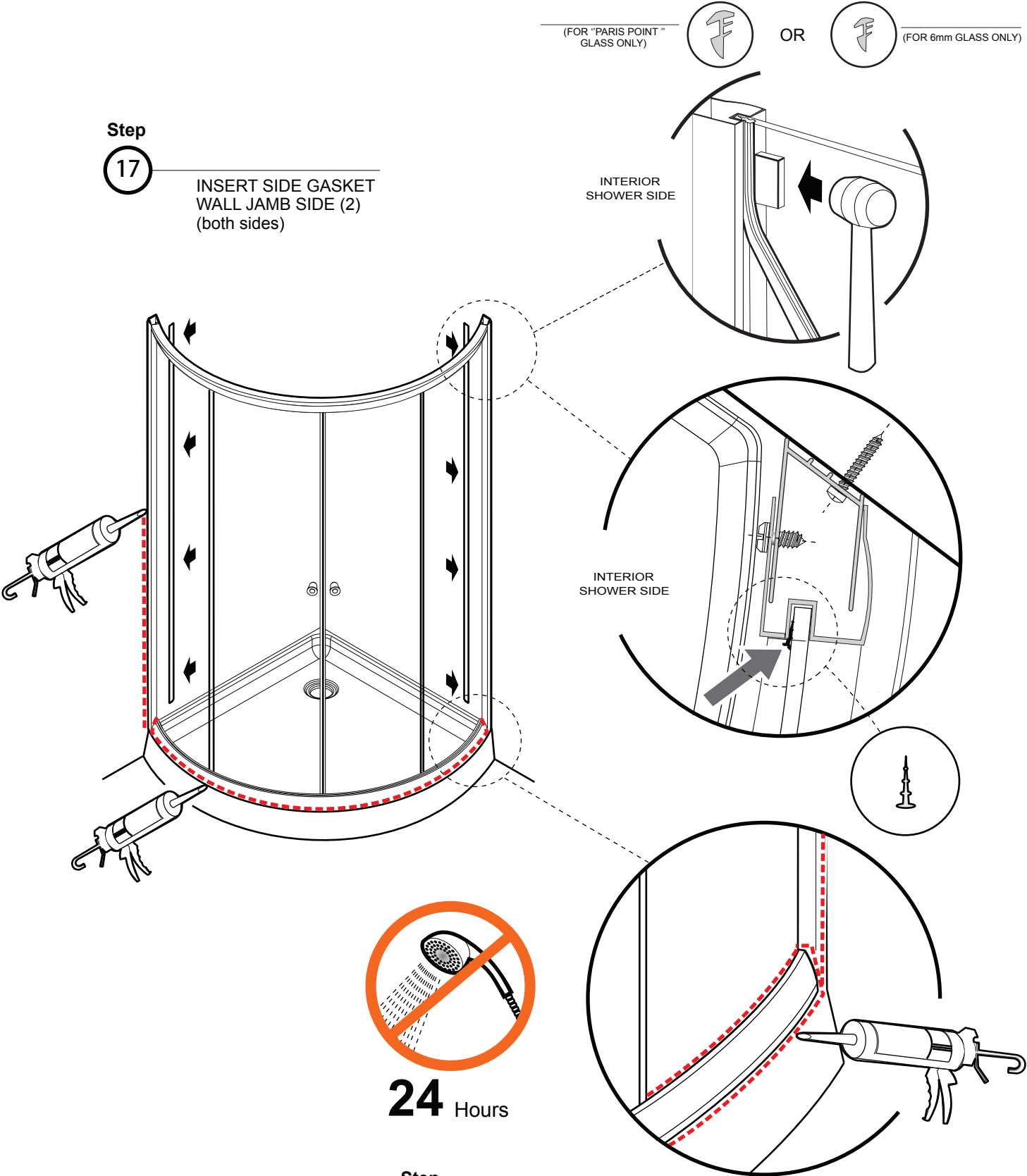
ON BOTH SIDES



Step

17

INSERT SIDE GASKET
WALL JAMB SIDE (2)
(both sides)



Step

18

SILICONE EXTERIOR OF (BOTTOM TRACK + ALONG WALL JAMB)