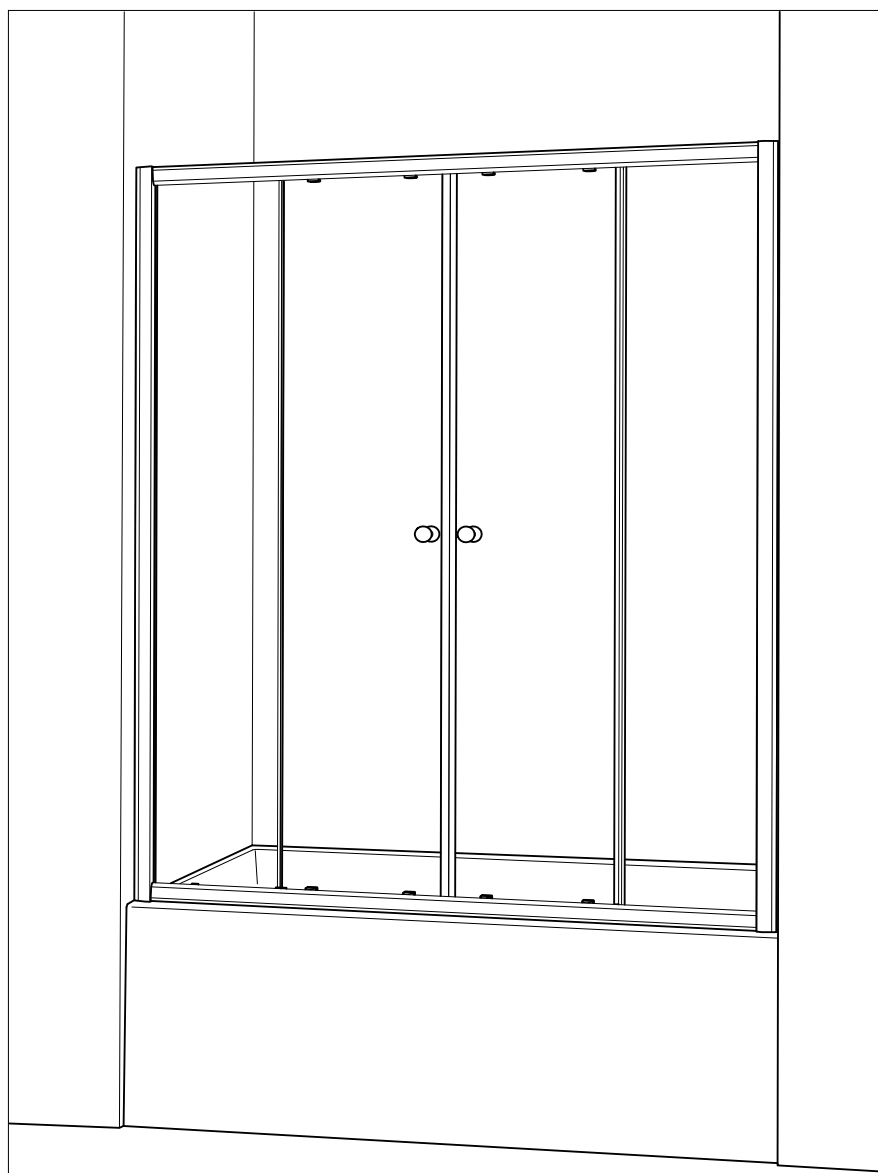


K-KT914Z - Kona

INSTRUCTION MANUAL

 **ALUMAX**
Kula Collection

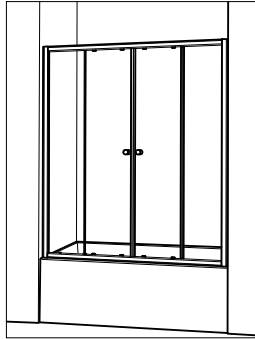
FRAMELESS BATHTUB ENCLOSURE





Please keep this manual and product code number for future reference
and replacement parts ordering if necessary.

INSTALLATION INSTRUCTIONS FOR CURVED GLASS SLIDING SHOWER DOOR



**Congratulations! You have made the right choice in buying the shower system.
We are convinced that you will be entirely satisfied with our product.**

READ CAREFULLY AND COMPLETELY BEFORE PROCEEDING

IT IS RECOMMENDED THAT YOU WEAR SAFETY GLASSES AT ALL TIMES DURING INSTALLATION

INSTALLATION OVER CERAMIC TILE

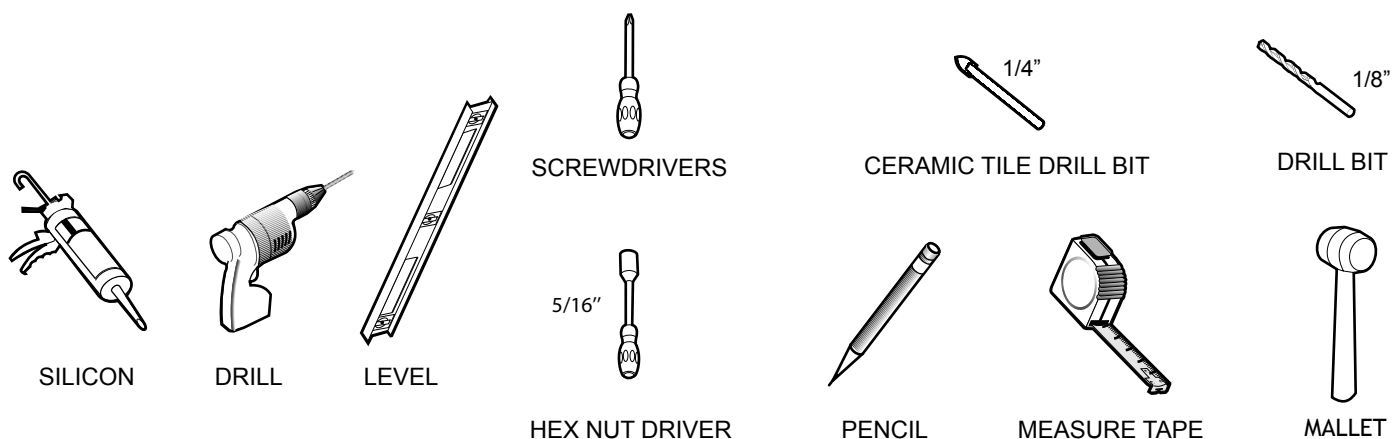
If your shower door is to be installed over ceramic tile, tile should extend completely under both wall jambs. Silicone should be used to seal the line where ceramic tile meets the base.

HOW TO CARE FOR YOUR DOOR

Never use scouring powder pads or sharp instruments on metal work or glass panels. An occasional wiping down with a mild detergent diluted in water is all that is needed to keep the panels and aluminum parts looking new.

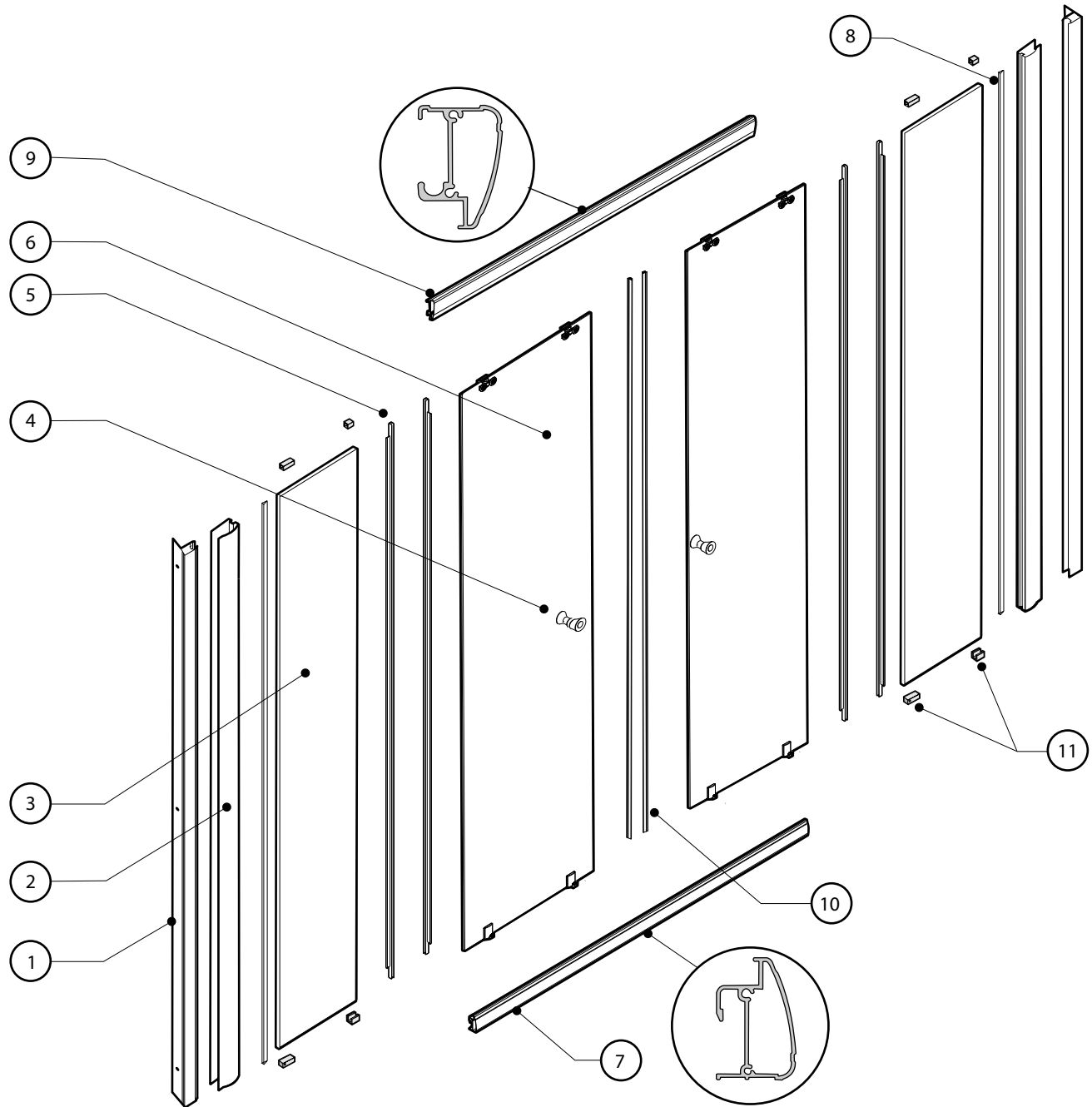
Product specifications are subject to change without notice.

REQUIRED TOOLS LIST



PACKAGING CHECK LIST & HARDWARE

<p>4</p> <p>SET OF HANDLES (2)</p>	<p>5</p> <p>SIDE GASKET (4)</p>	<p>8</p> <p>OR</p> <p>(FOR "PARIS POINT " GLASS ONLY)</p> <p>SIDE GASKET (2)</p>	<p>10</p> <p>MAGNETIC DOOR GASKET (2)</p>
<p>11</p> <p>GLASS SUPPORT (8)</p>	<p>12</p> <p>BOTTOM SLIDER SHIM (4)</p>	<p>13</p> <p>WALL PLUG (8)</p>	<p>14</p> <p>(M4 X 8)</p> <p>SCREW 3/8" LG (8)</p>
<p>15</p> <p>SCREW CAP (8)</p>	<p>16</p> <p>(M4 X 35)</p> <p>SCREW 1 3/8" LG (14)</p>	<p>17</p> <p>(M4 X 8)</p> <p>SCREW 1/2" LG (8)</p>	<p>18</p> <p>EXPANDER CAP (2)</p>



1 WALL JAMB (2)

2 EXPANDER (2)

3 FIXED PANEL (2)

4 SET OF HANDLES (2)

5 SIDE GASKET (4)

6 DOOR PANEL ASSEMBLY (2)

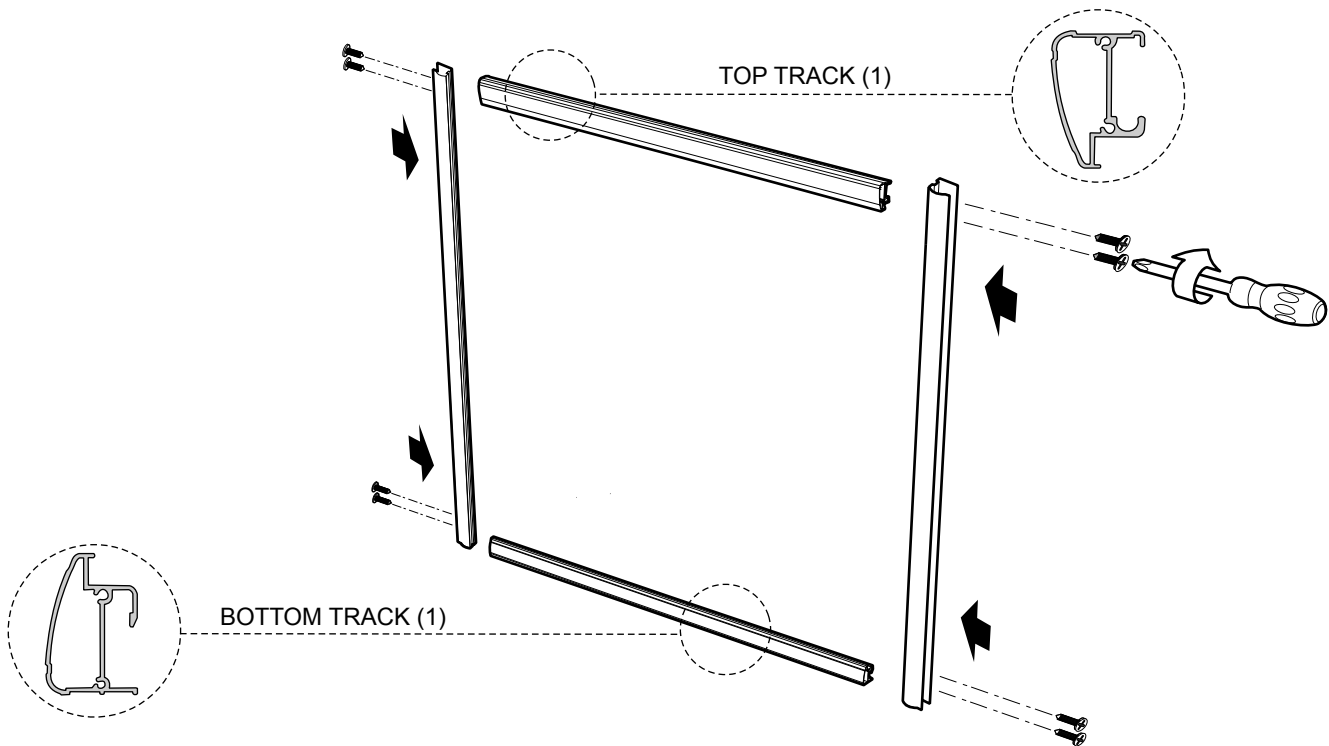
7 BOTTOM TRACK (1)

8 SIDE GASKET WALL JAMB SIDE (2)

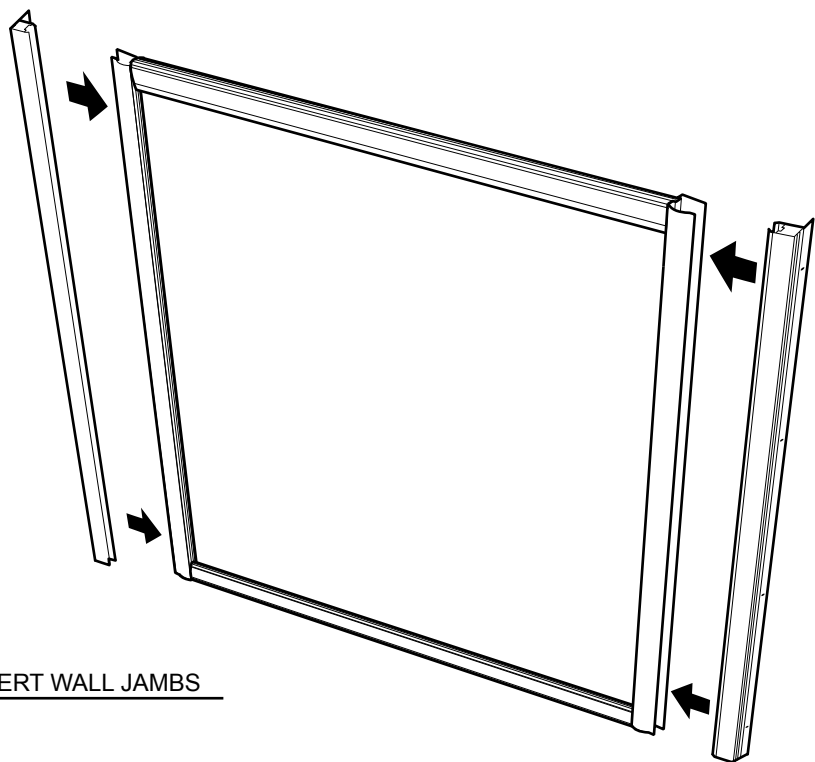
9 TOP TRACK (1)

10 MAGNETIC DOOR GASKET (2)

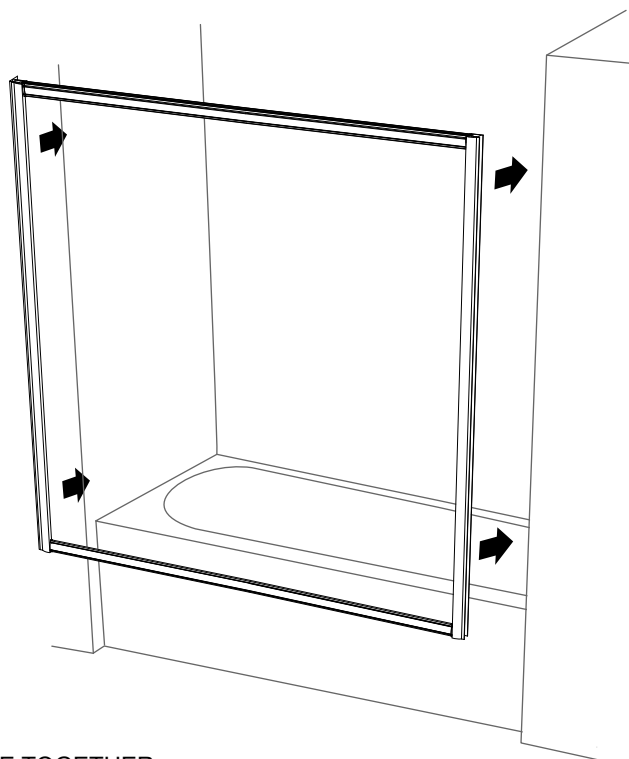
11 GLASS SUPPORT (8)



Step
1 EXPENDER (2) + TRACK (2) + SCREW 1 3/8" LG (8)



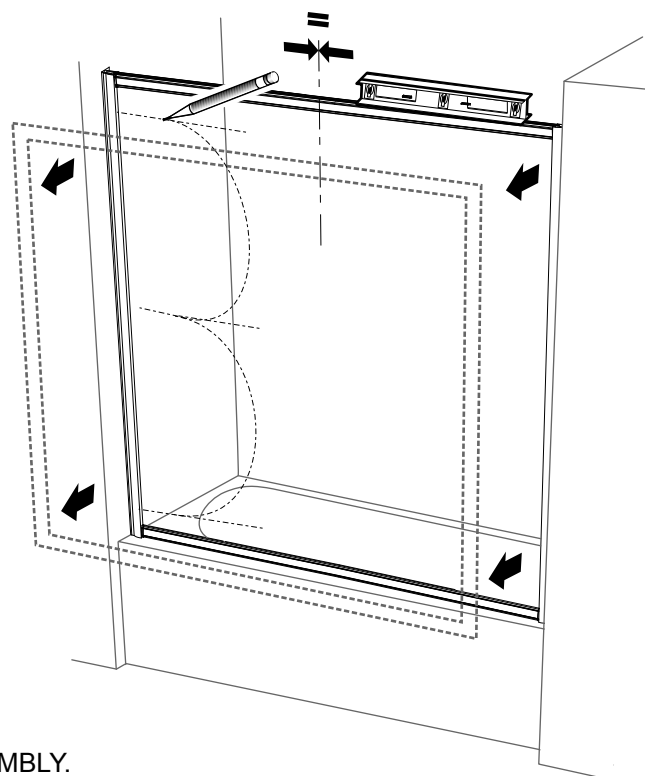
Step
2 INSERT WALL JAMBS



Step

3

POSITION AND CENTER THE FRAME TOGETHER
WITH WALLJAMBS ONTO THRESHOLD OF
SHOWER BASE.

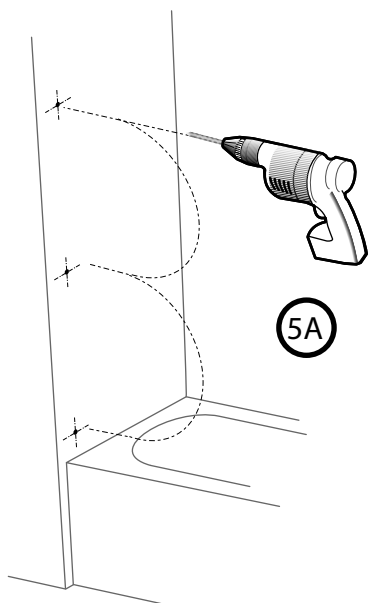


Step

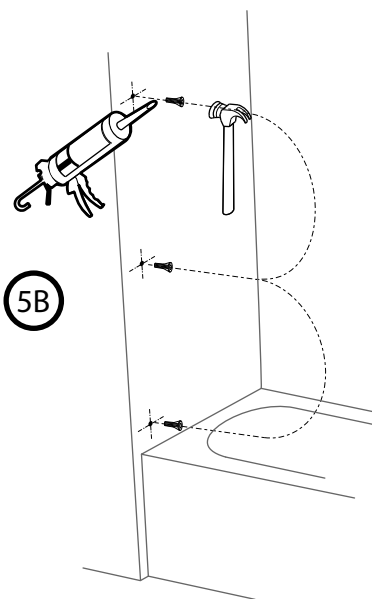
4

- ADJUST AND LEVEL THE FRAME ASSEMBLY.
- MARK DRILLING LOCATION FOLLOWING PILOT HOLES.
- REMOVE FRAME ASSEMBLY FROM BASE.

ON BOTH SIDES



5A



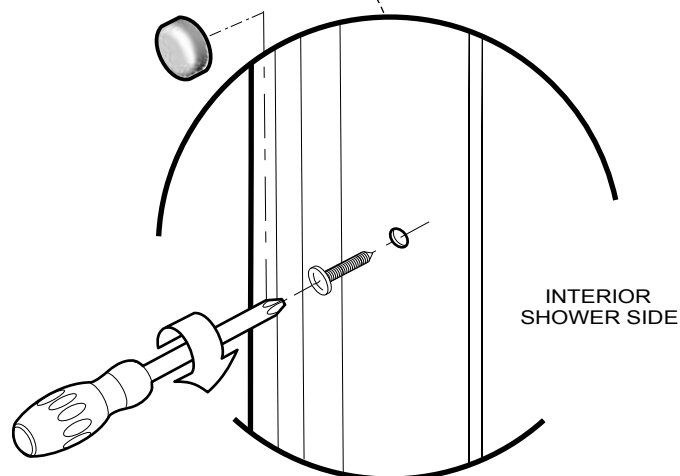
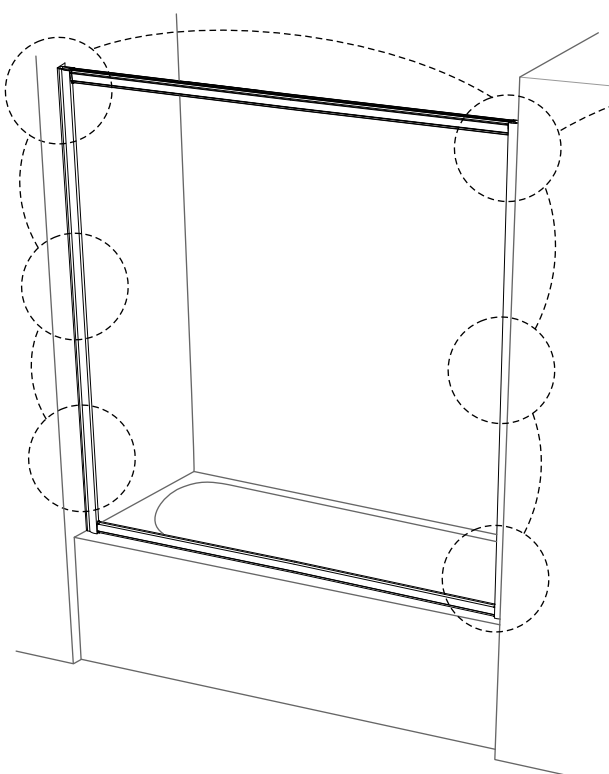
5B

Step

5

- INSERT THE WALL PLUGS (8)
AND PUT IN EACH A DROP OF SILICONE.

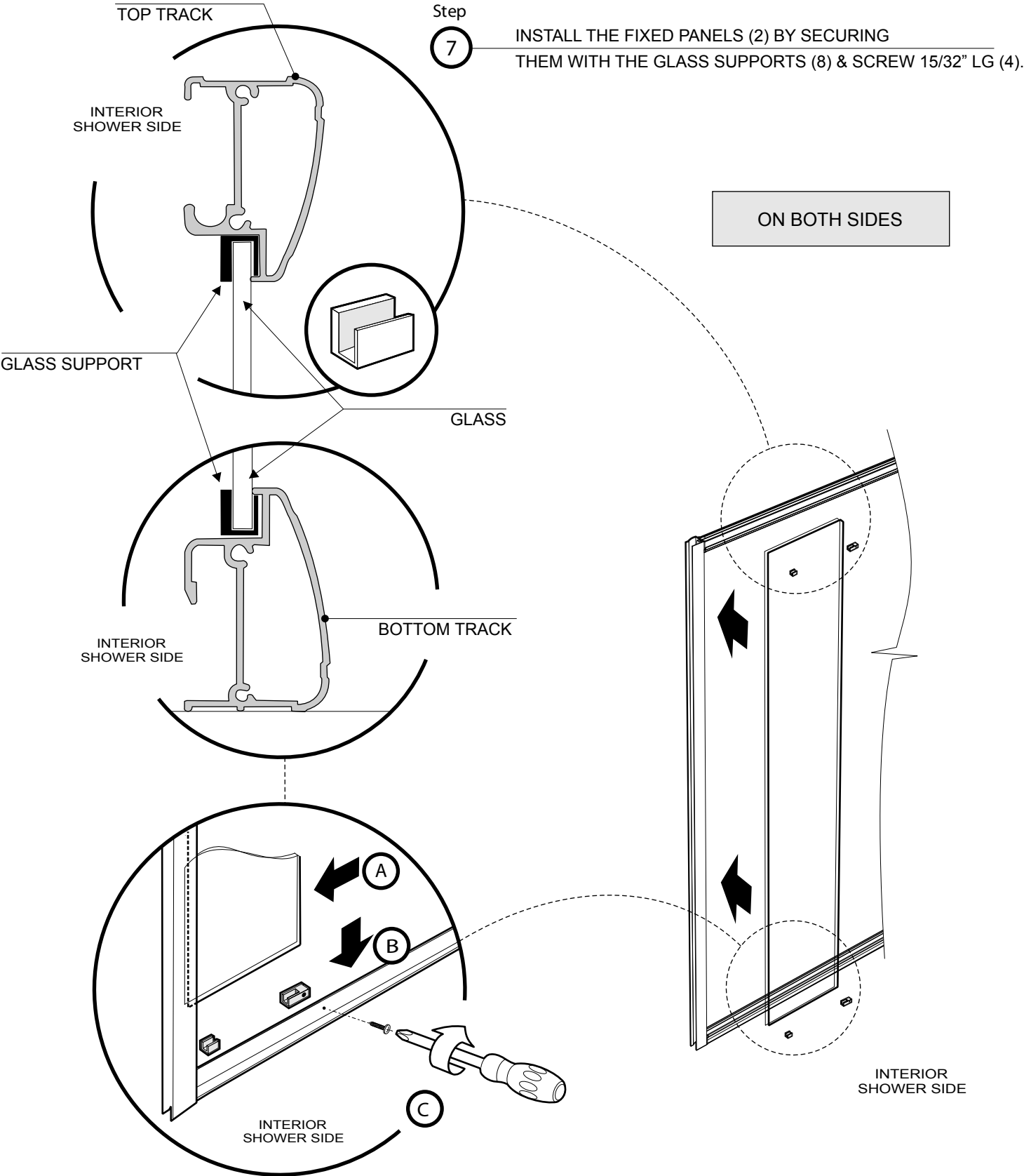
ON BOTH SIDES

INTERIOR
SHOWER SIDE

Step

6

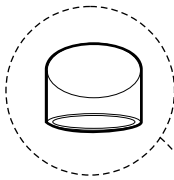
SECURE THE FRAME USING 1 3/8" SCREWS (6)



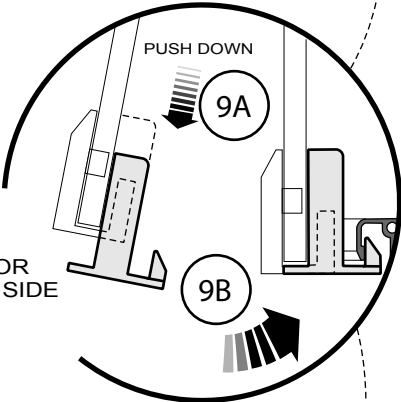
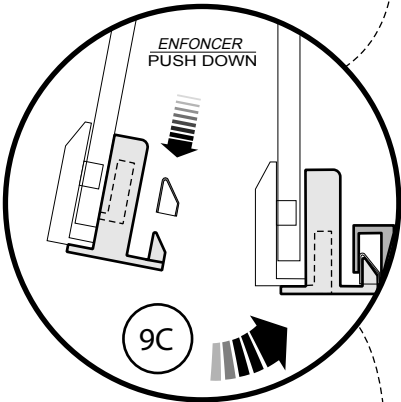
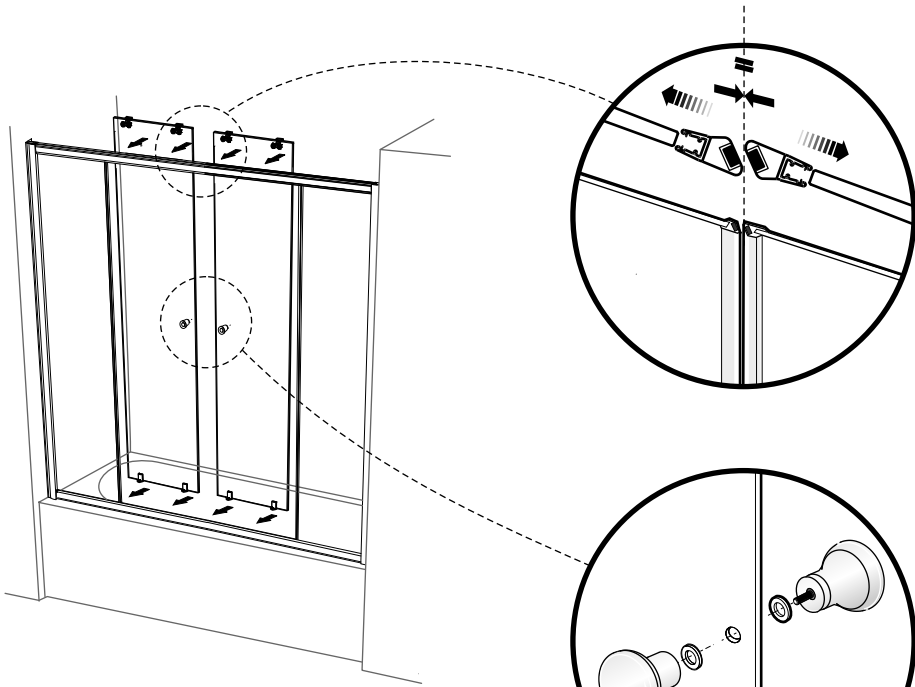
Step

8

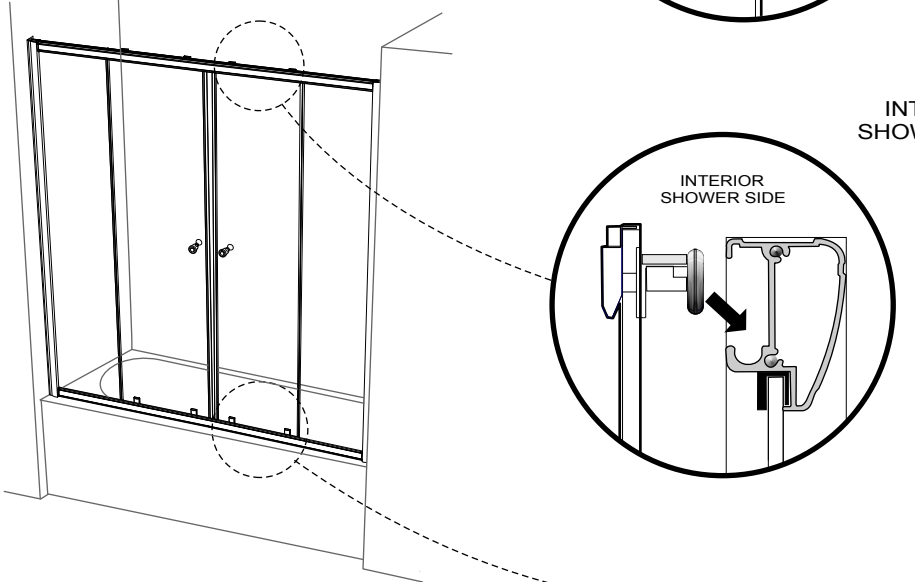
PRIOR TO INSTALL DOOR PANELS
INSERT MAGNETIC DOOR GASKET (2)



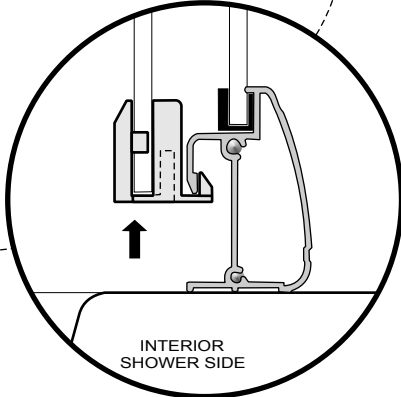
(OPTIONAL)



INTERIOR
SHOWER SIDE



INTERIOR
SHOWER SIDE



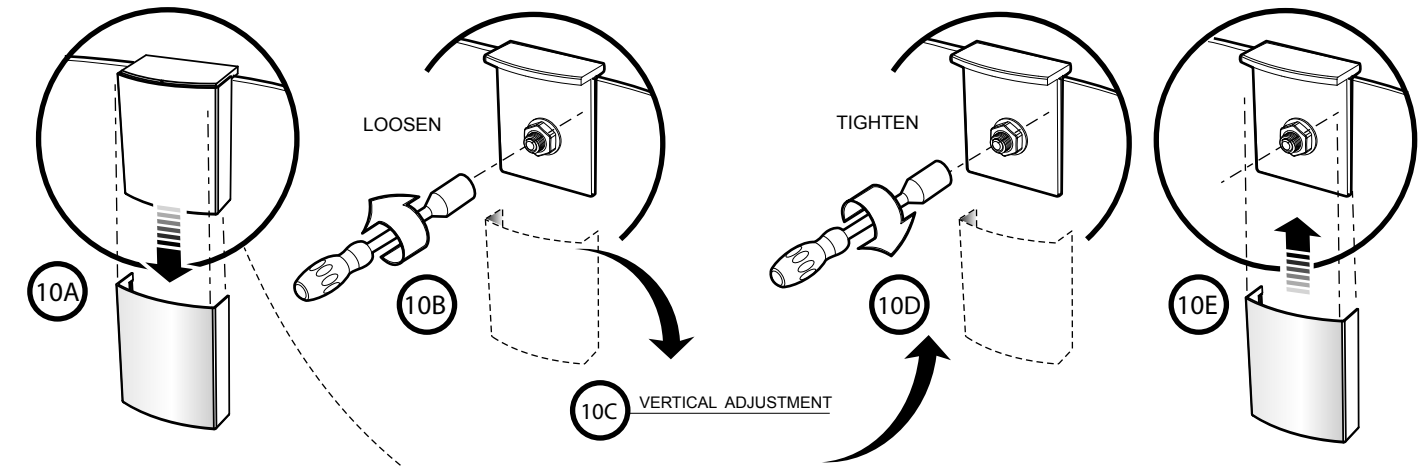
Step

9

INSERT DOOR PANELS INTO TOP & BOTTOM TRACK

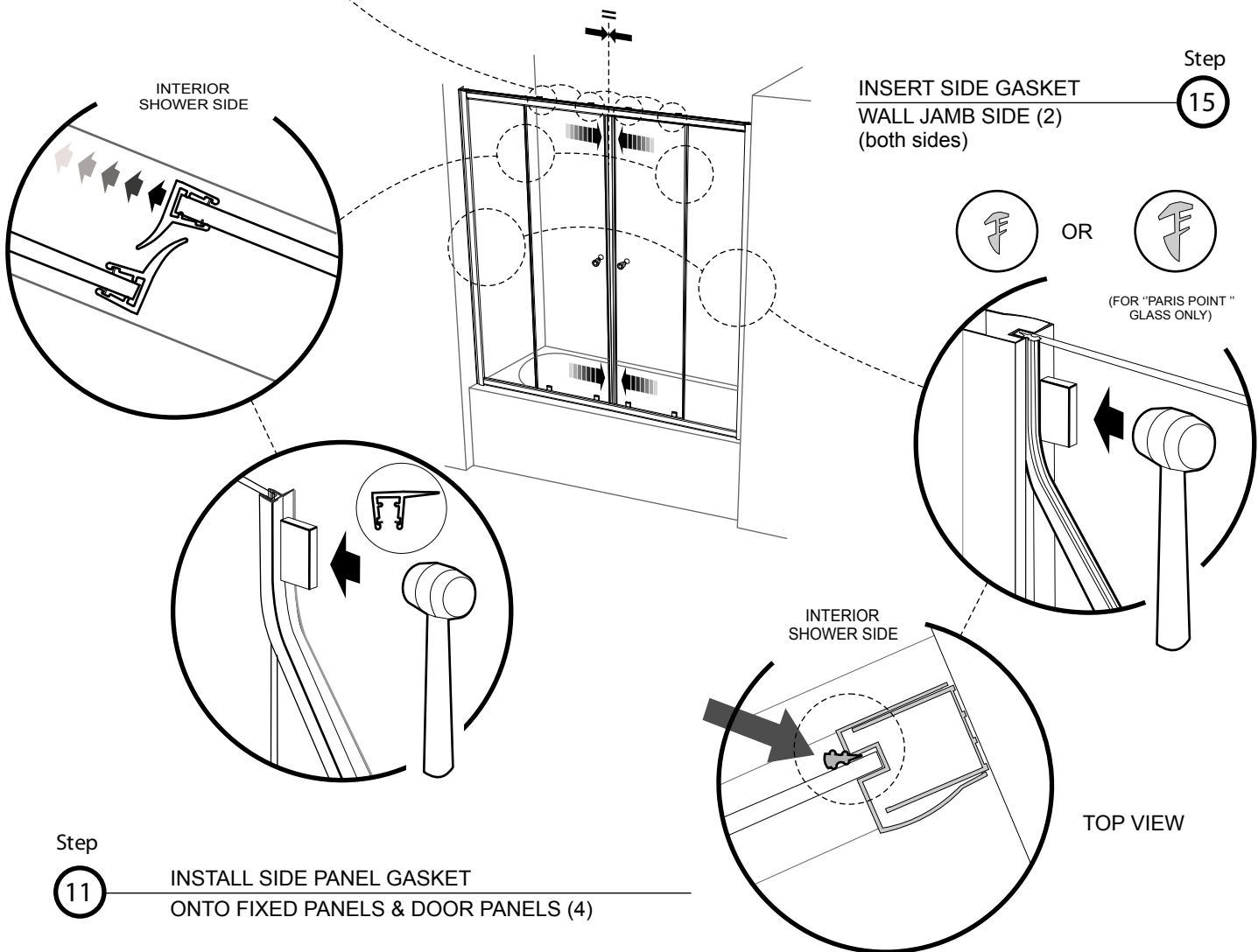
Step

10 USE HEX NUT DRIVER OR PLIERS FOR VERTICAL DOOR ADJUSTMENT



Step

15 INSERT SIDE GASKET
WALL JAMB SIDE (2)
(both sides)



Step

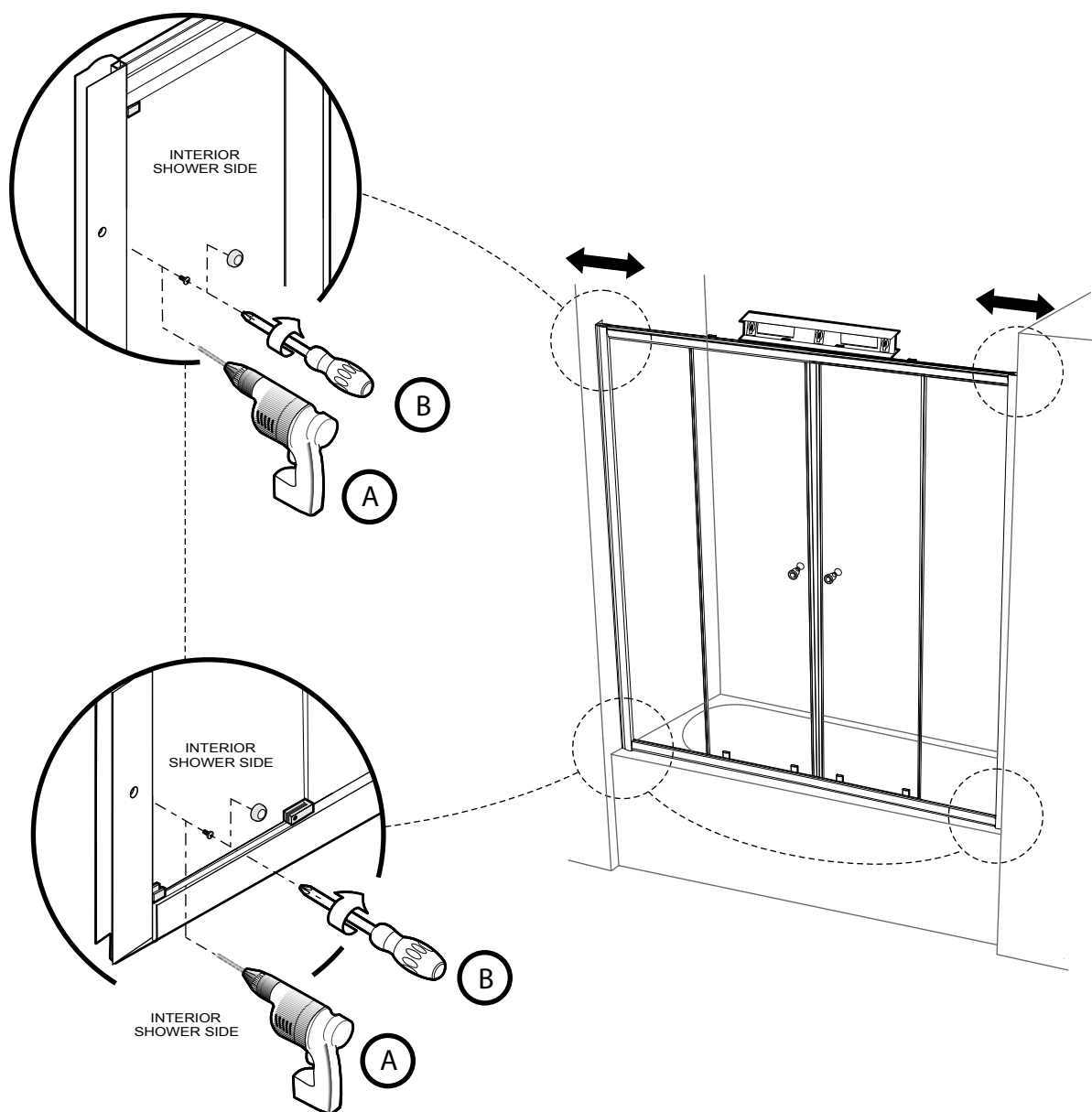
11 INSTALL SIDE PANEL GASKET
ONTO FIXED PANELS & DOOR PANELS (4)

Step

12

- LEVEL AND ADJUST FRAME

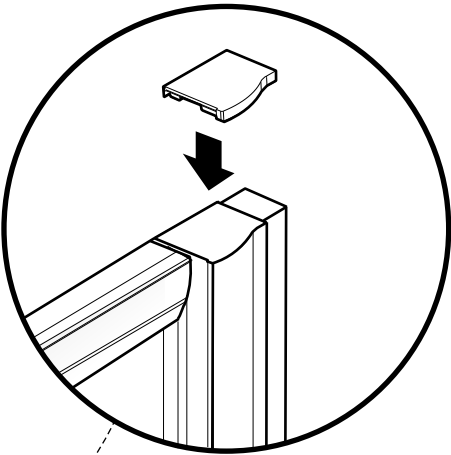
- FASTEN FRAME WITH SCREW 3/8" LG (8) + SCREW CAP (8)



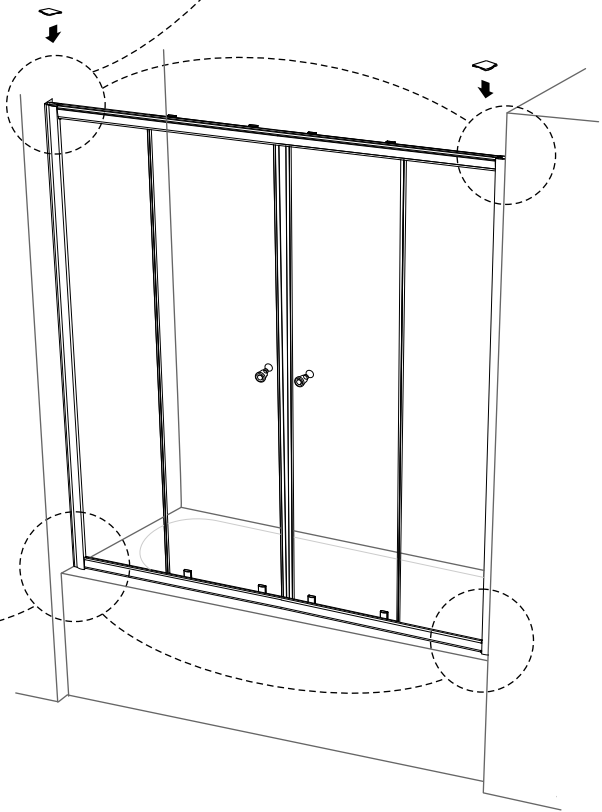
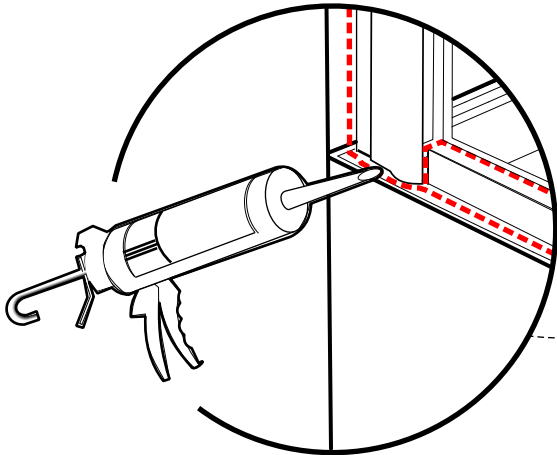
Step

13

INSERT EXPANDER CAPS



24 Hours



Step

14

SILICONE EXTERIOR ON BOTH SIDES, ALONG THE WALL JAMBS AND WALLS.
ALSO ALONG THE BOTTOM TRACK AND THE SIDE PANELS.