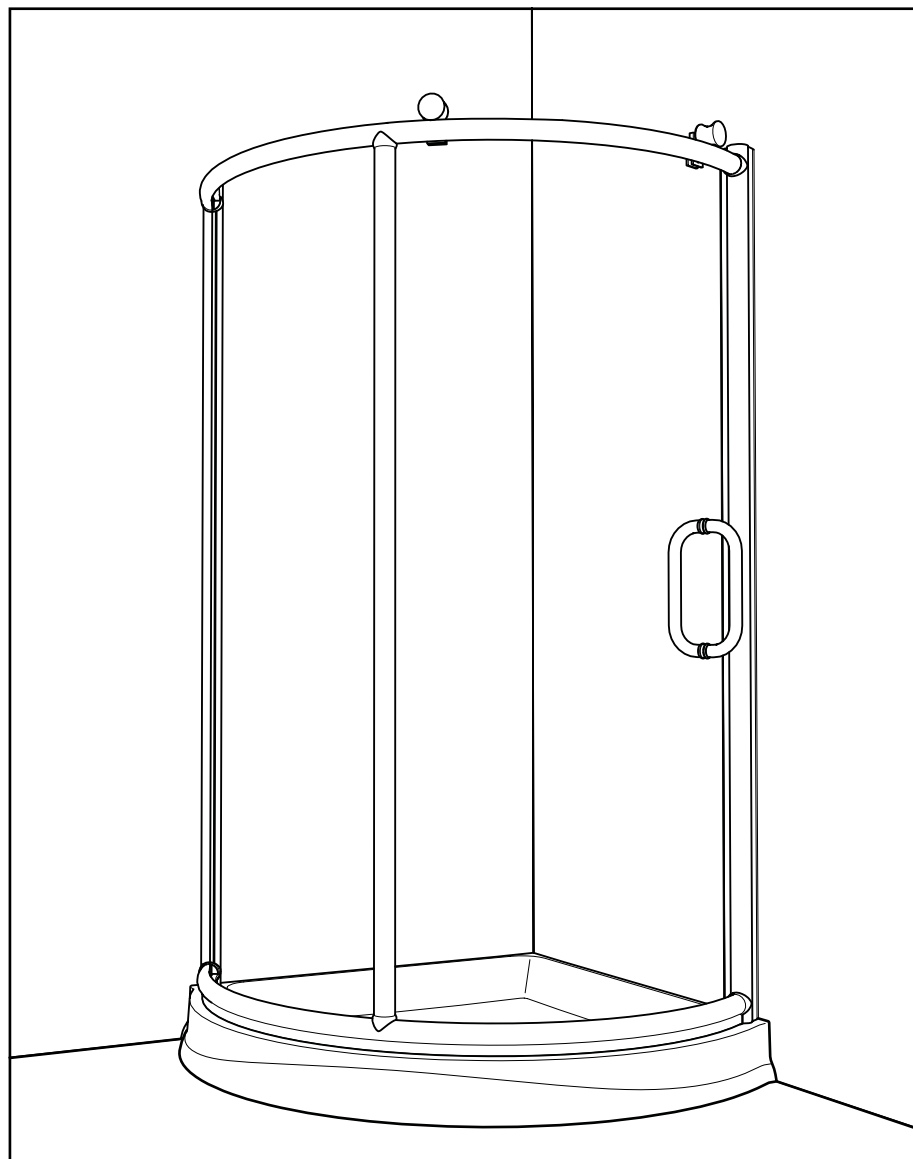


K-NA2Z-36

INSTRUCTION MANUAL

 **ALUMAX**
Kula Collection

Nalu Corner Shower Enclosure



0710

KN001

Please keep this manual and product code number for future reference and replacement parts ordering if necessary.

GENERAL INSTRUCTIONS

- *Read this manual carefully and completely before proceeding.*
- *It is recommended that you wear safety glasses at all times during the installation.*

INSTALLATION OVER CERAMIC TILES

- *Silicone should be used to seal the gap where the ceramic tiles meet the fixed panel.*
- *If your shower door is to be installed over ceramic tiles, the tiles should lay completely under the wall jamb.*

NOTICE

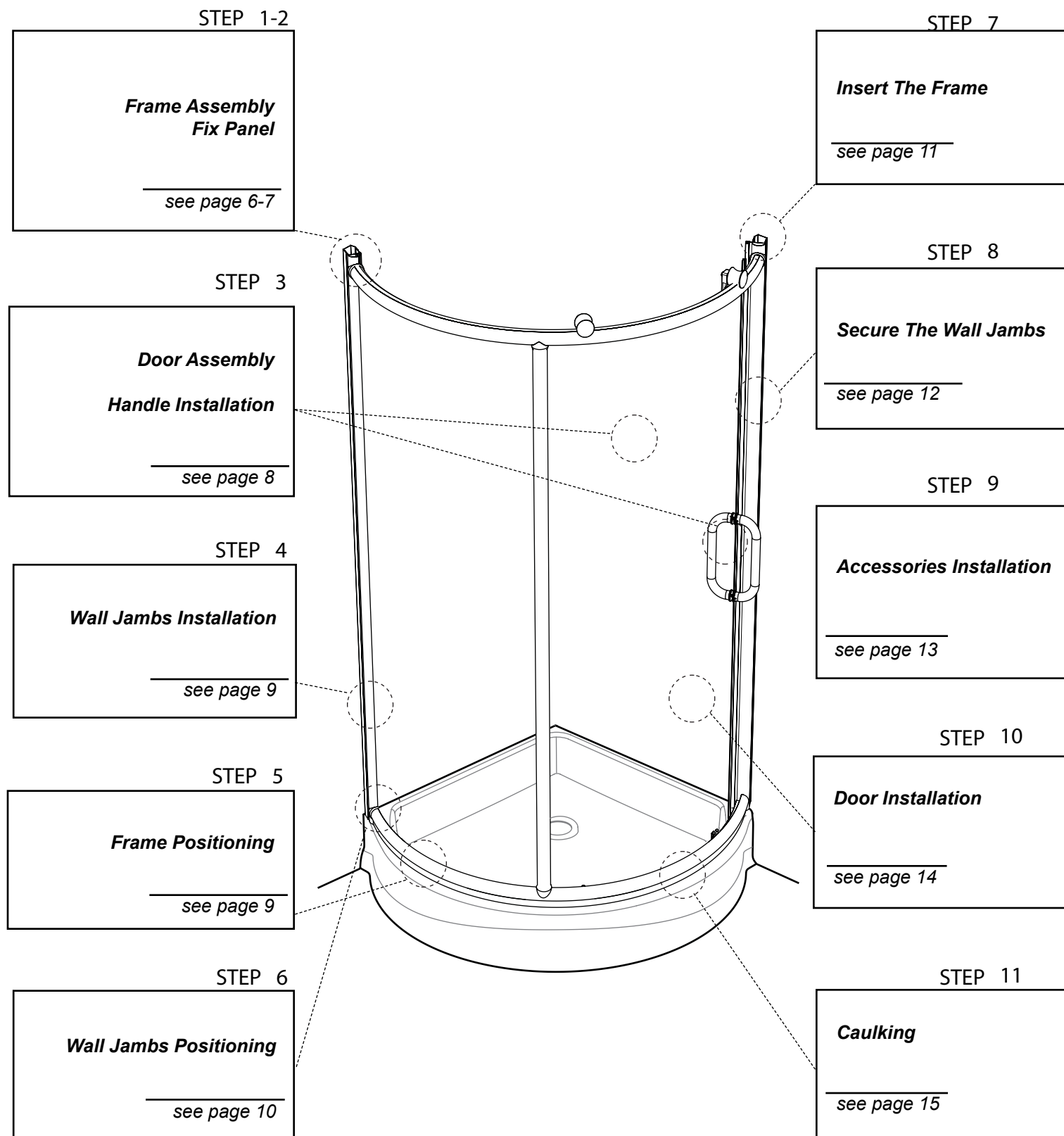
- *Caulking: no sealant is required inside the shower. Unless otherwise stated.*
- *Some models are equipped with clear sealing gaskets.*

CARE FOR YOUR SHOWER DOOR

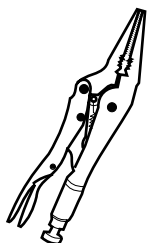
- *Never use scouring powder pads or sharp instruments on metal pieces or glass panels. An occasional wiping down with a mild soap diluted in water is all that is needed to keep the panels and aluminum parts looking new.*
- *We recommend wiping the glass panels with a squeegee after each use.*

Product specifications are subject to change without notice.

INSTALLATION OF COMPONENTS



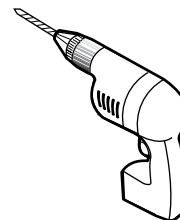
TOOLS AND MATERIAL REQUIRED



LONG NOSE LOCKING PLIER (X2)



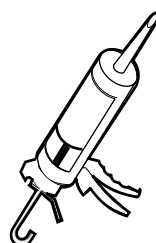
SCREWDRIVERS



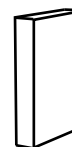
DRILL



1/4" & 1/16" DRILL BITS



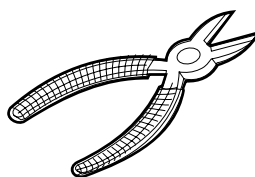
SILICONE



BLOCK



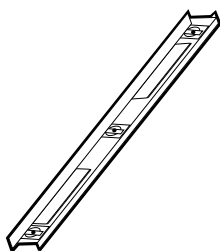
PENCIL



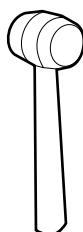
CUTTING PLIER



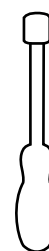
TAPE MEASURE



LEVEL



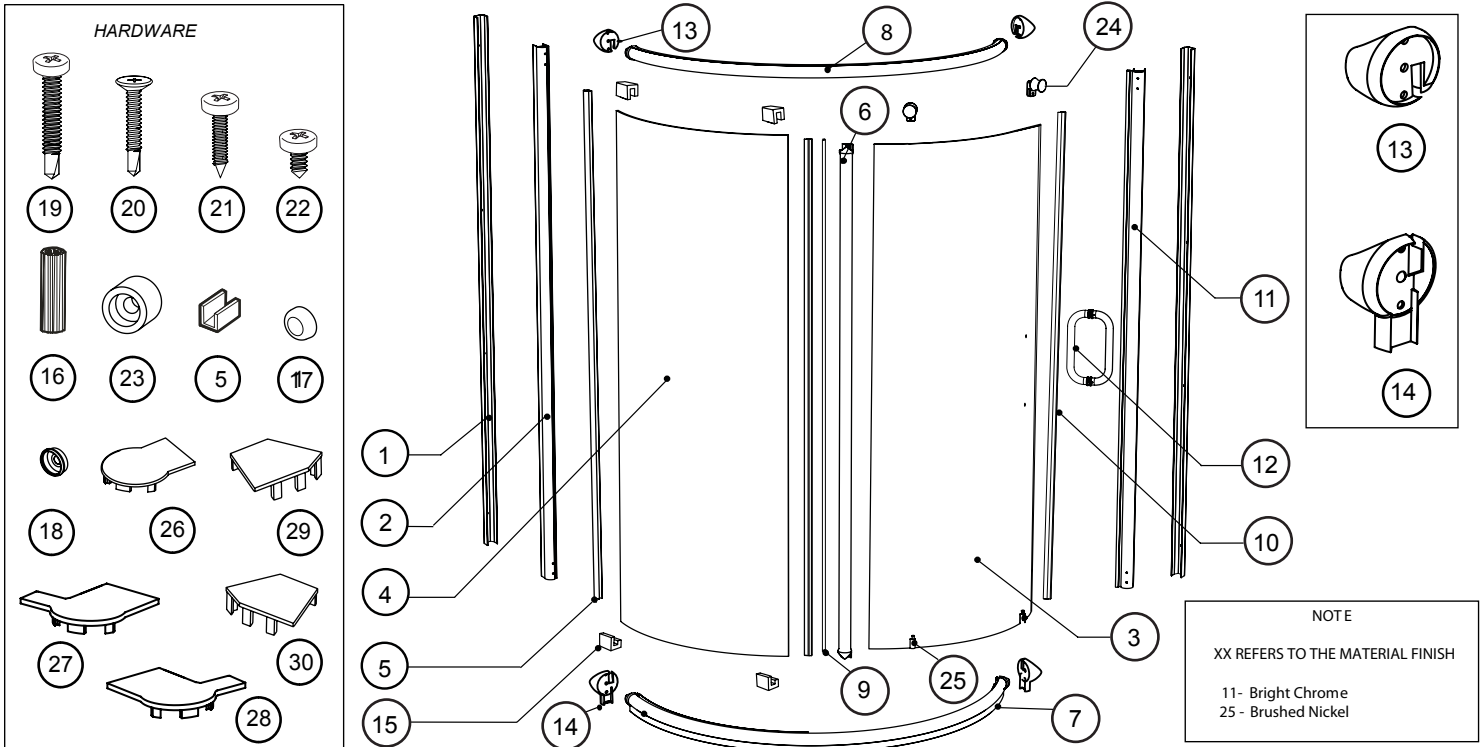
MALLET



5/16" HEX NUT DRIVER

* To install the shower door on ceramic tiles, use a 1/4" drill bit for ceramic tiles.

PARTS LISTING

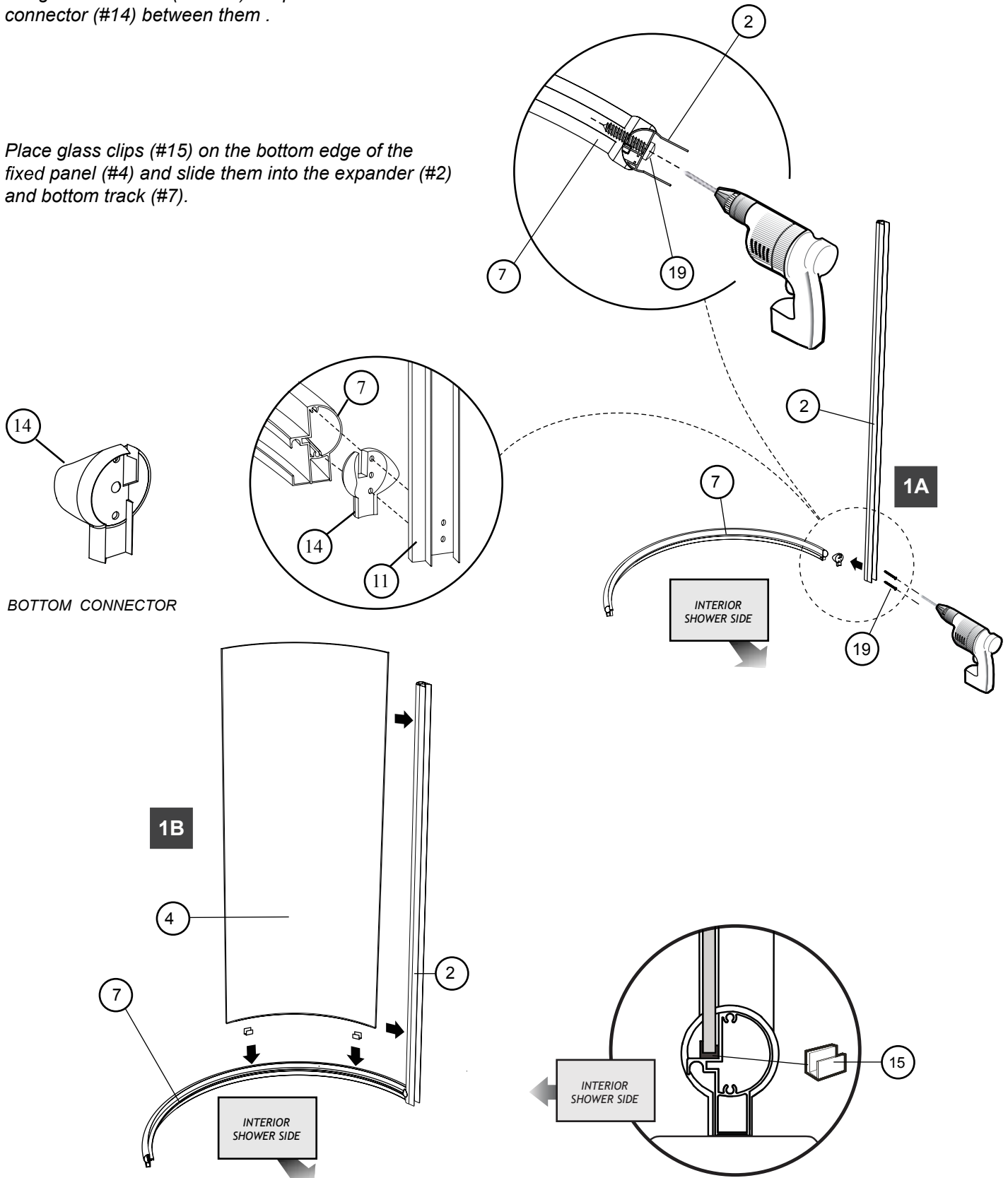


ITEM	PARTS	QTY
1	WALL JAMB	2
2	EXPANDER	1
3	DOOR PANEL	1
4	SIDE PANEL	1
5	VERTICAL GASKET	2
6	VERTICAL	1
7	BOTTOM TRACK	1
8	TOP TRACK	1
9	DOOR SIDE GASKET	1
10	MAGNETIC DOOR GASKET	1
11	MAGNETIC EXPANDER	1
12	SET OF HANDLES	1
13	TOP CONNECTOR	2
14	BOTTOM CONNECTOR	2
ITEM	HARDWARE	QTY
15	GLASS SUPPORT	4
16	WALL PLUG (1/4" x 1 1/8")	8
17	SCREW CAP	8
18	BACK SCREW CAP	8
19	PAN SELF DRILLING SCREW #M4-35 (1 3/8")	16
20	FLAT HEAD SELF DRILLING SCREW # M4-25 (1")	2
21	FLAT HEAD SCREW #M4-12 (1/2")	1
22	PAN CREW #M4-10 (3/8")	8
23	STOPPER (Ø 7/16")	1
24	TOP WHEELS	2
25	BOTTOM WHEELS	2
26	COVER FOR THE EXPANDER	1
27 / 28	COVER FOR THE MAGNETIC EXPANDER	1
29 / 30	COVER FOR THE WALL JAMB	2

1 FRAME ASSEMBLY

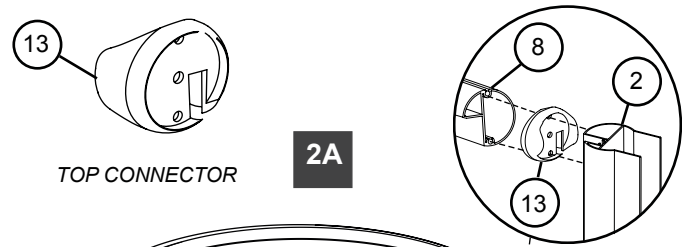
1A Fasten the expander (#2) to the bottom track (#7) by using 1 3/8" screws (#19 x2) and place the bottom connector (#14) between them .

1B Place glass clips (#15) on the bottom edge of the fixed panel (#4) and slide them into the expander (#2) and bottom track (#7).

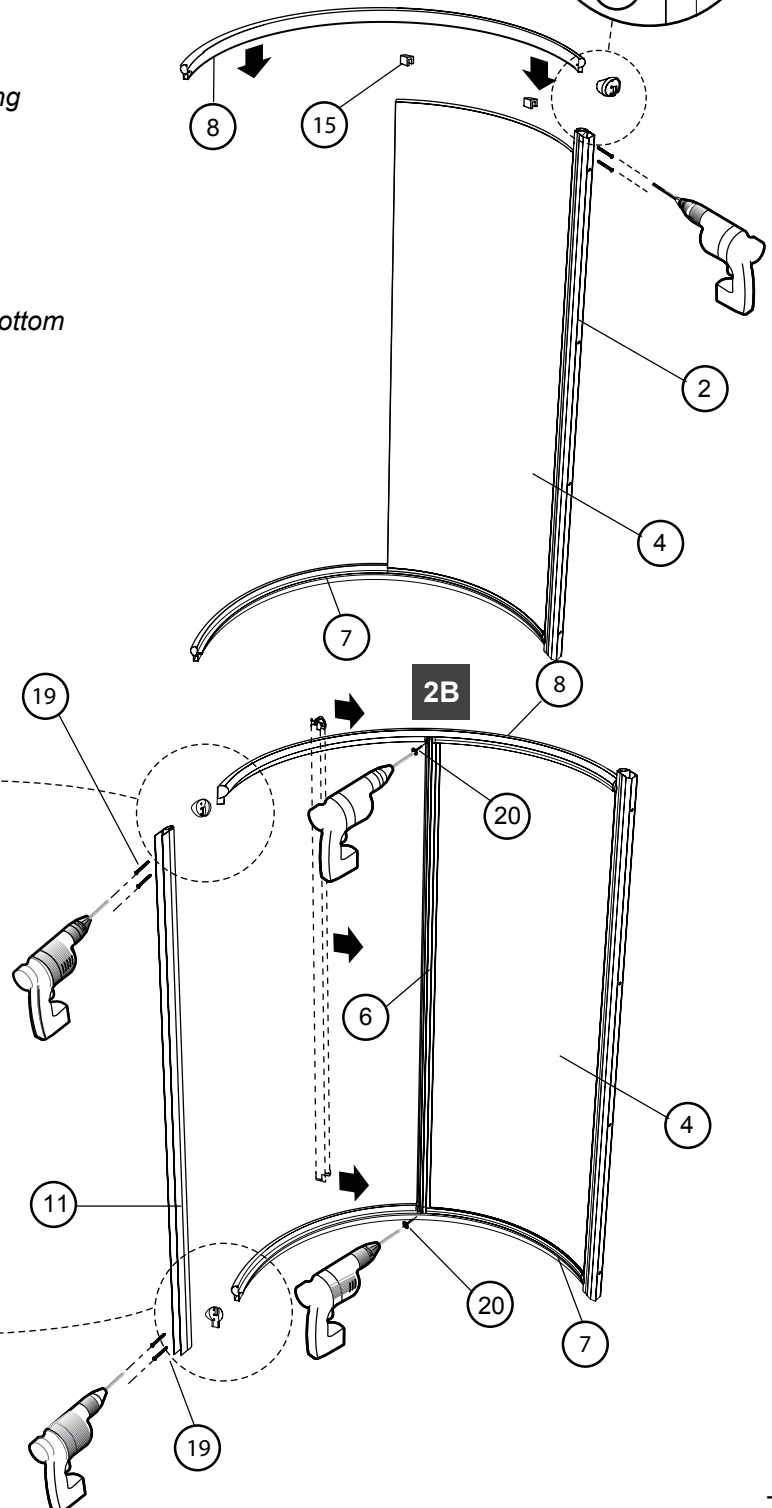


2 FIXED PANEL INSTALLATION

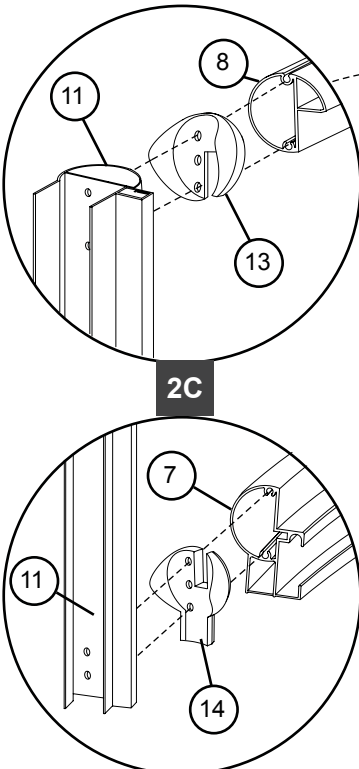
2A Place glass clips (#15) on the top edge of the fix panel (#2). Fasten the top track (#8) using 1 3/8" screws (#19 x 2) by placing the top connector (#13) between the top track (#8) and the expander (#2).



2B Insert the vertical column (#6) onto the fixed panel (#4) and screw into the top (#8) and bottom track (#7) by using the 1" screws (#20 x 2).



2C Screw the magnetic expander (#11) to the top (#8) and bottom tracks (#7) using the 1 3/8" screws (#19 x 4) by placing the top and bottom connectors (#13 and #14) between.

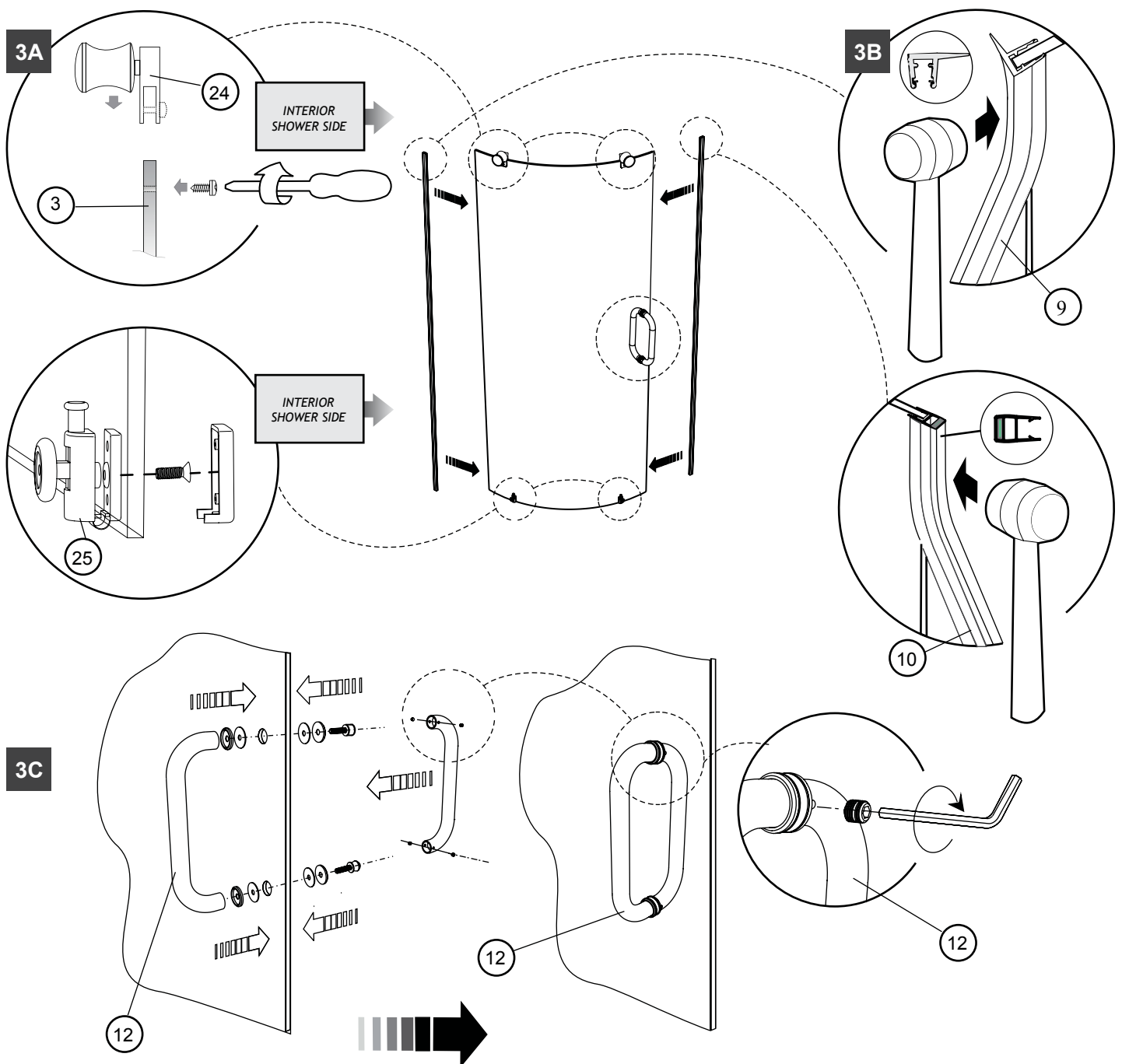


3 HANDLE AND DOOR INSTALLATION

3A Install the wheels (#24 and 25#).

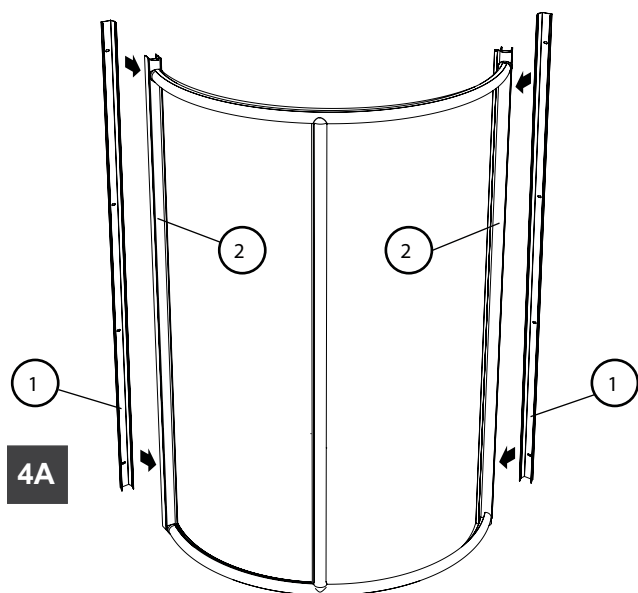
3B Insert the door magnet gasket (#10) and the door side gasket (#9) as shown.

3C Install the handles (#12) as shown. Tighten the handle (#12) screws inside the shower.



4

WALL JAMB INSTALLATION

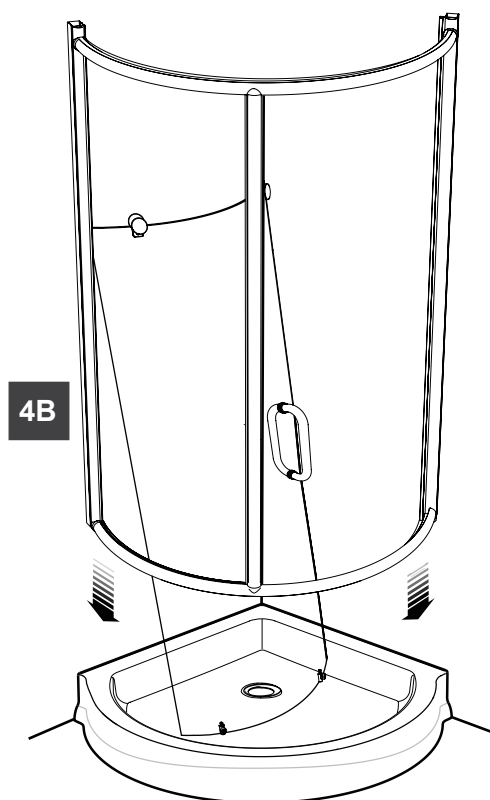


4A Insert wall jambs (#1) temporarily into the expanders (#2).

4B Position and center the frame onto threshold shower base.



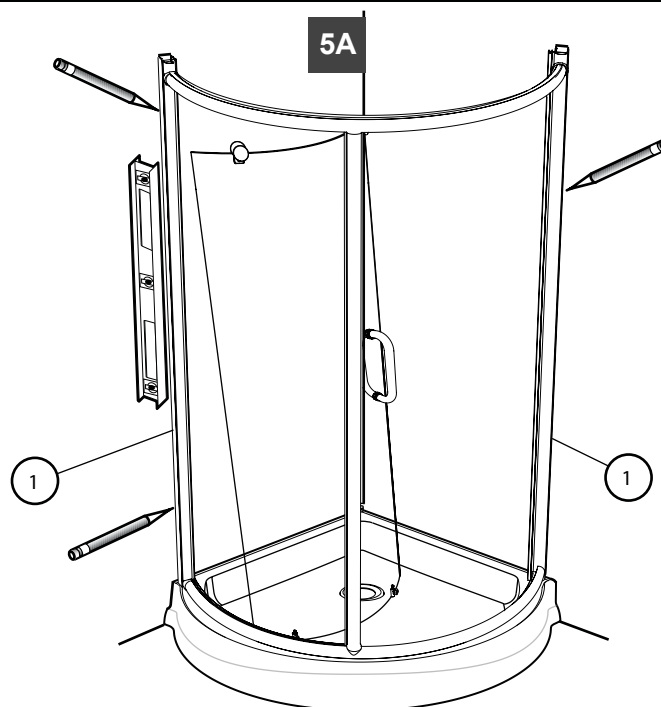
Place the door panel inside the shower base.
Ensure to protect the surface of the base.



5

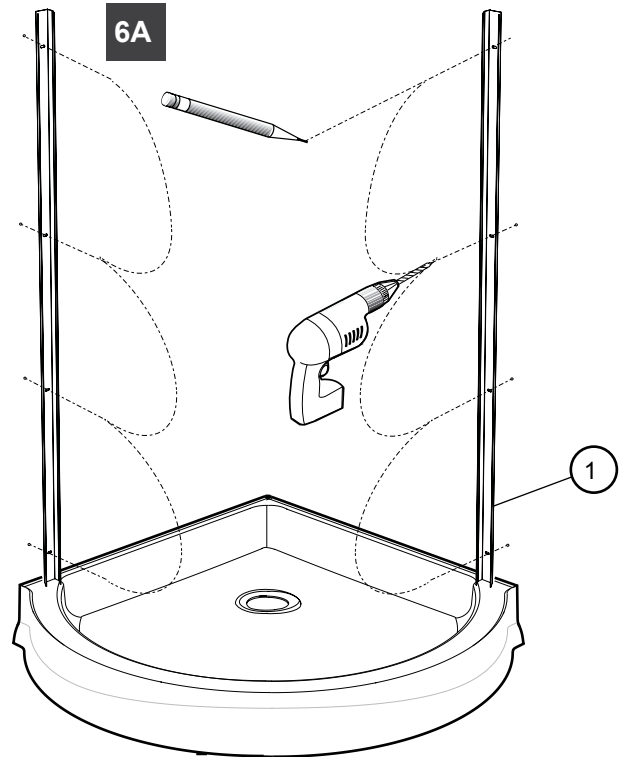
POSITIONING THE FRAME

5A Level the shower frame. Trace the outer edge of the wall jambs (#1). Remove the shower frame after the marking are done.

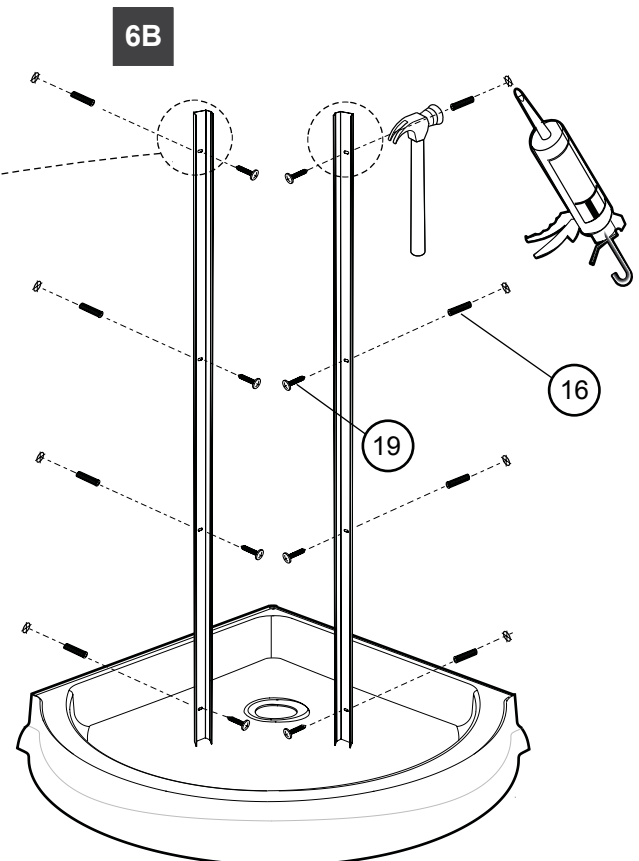
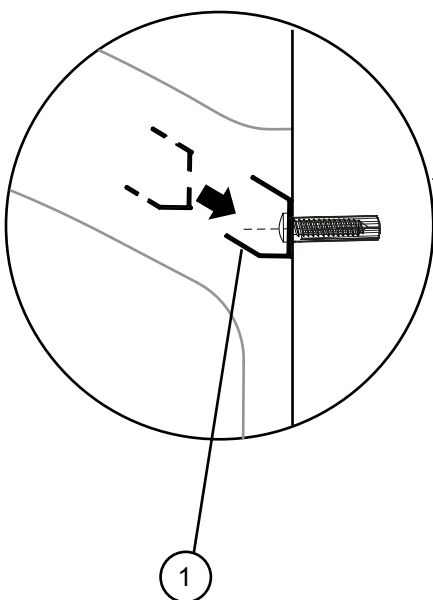


6 MOUNT THE WALL JAMBS

- 6A *Reposition the wall jambs (#1) on the shower threshold using the marked lines. Mark the drilling location and remove the wall jambs. With a 1/4" drill bit, drill 4 holes on each side.*



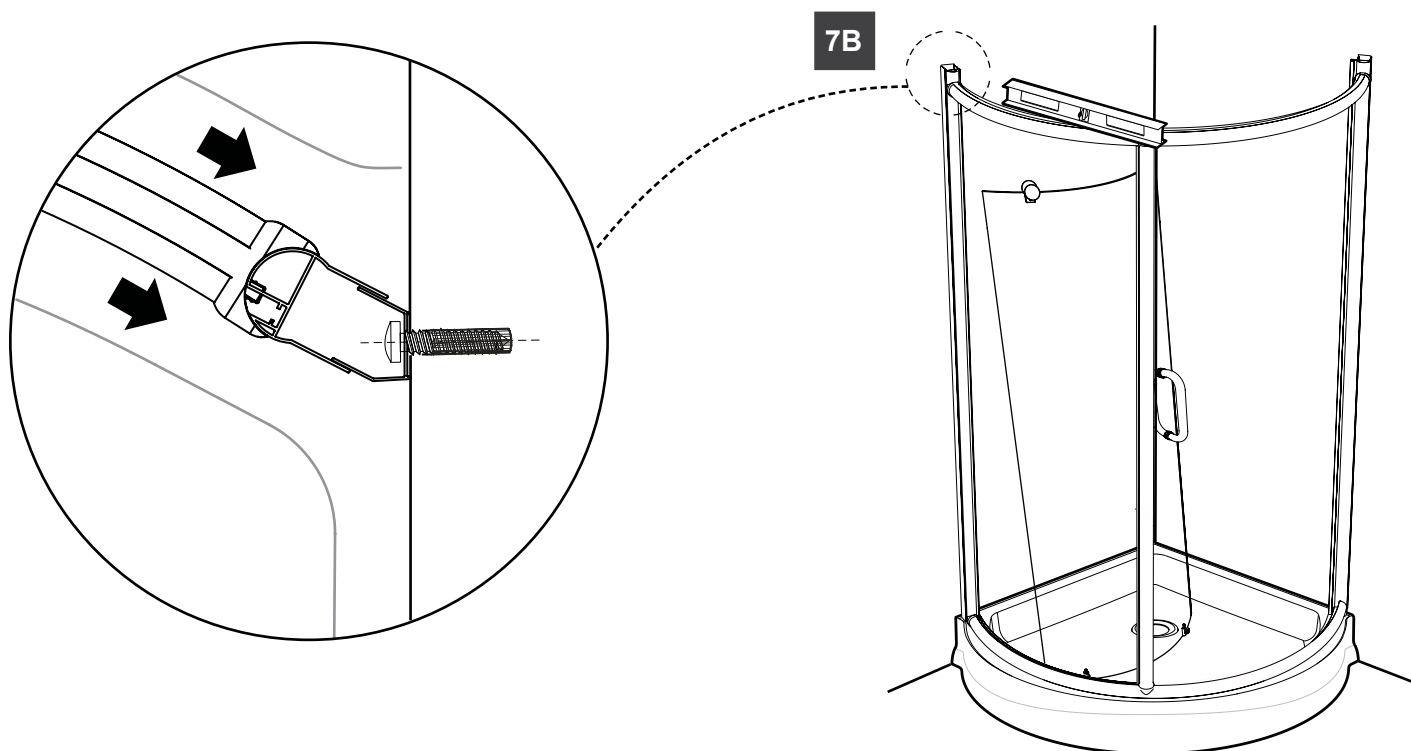
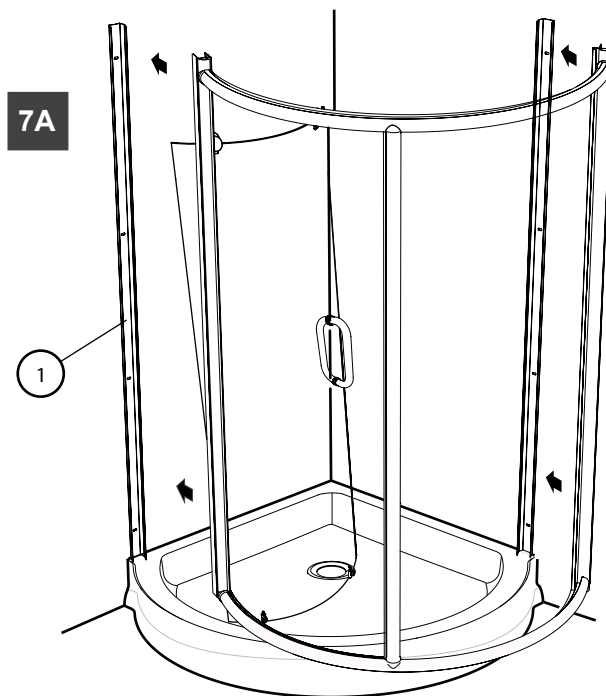
- 6B *Put a drop of silicone in each hole and insert 8 wall plugs (#16). Secure the wall jamb (#1) using the 1 3/8" screws (#19 x 8).*



7 INSERT THE FRAME

7A *Insert the shower frame into the wall jambs (#1) as illustrated.*

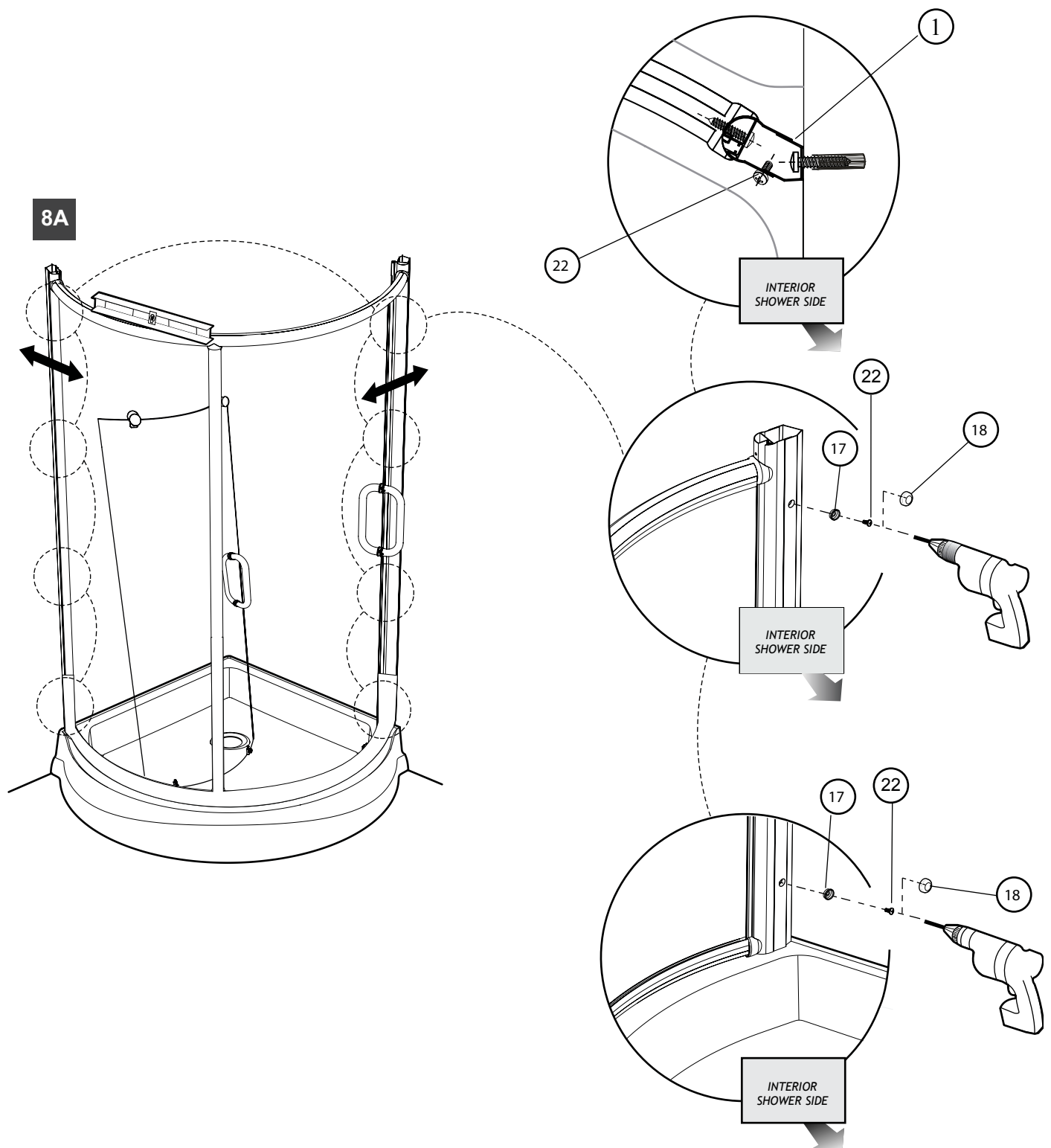
7B *Level the frame.*



8

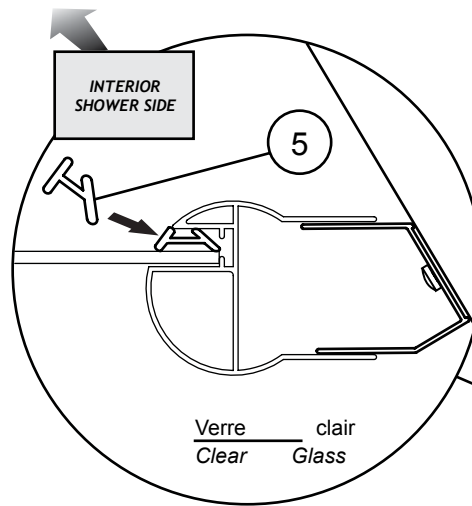
SECURE THE WALL JAMBS

8A Secure frame (#1) with screws 3/8" (#22 x 8) and add screw caps (#17-18 x 8).

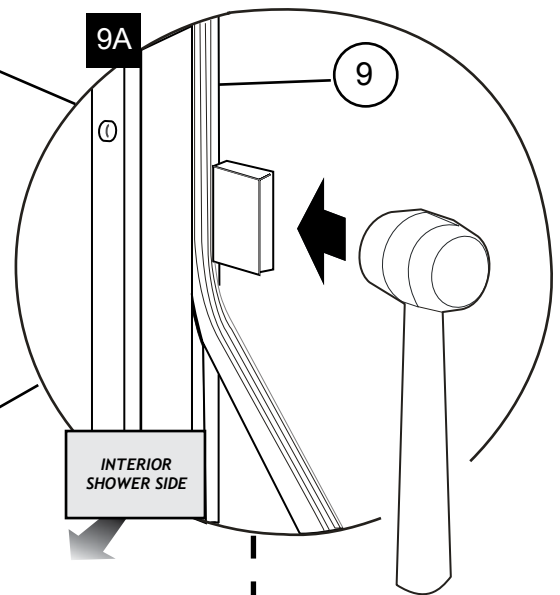


9 ACCESSORIES INSTALLATION

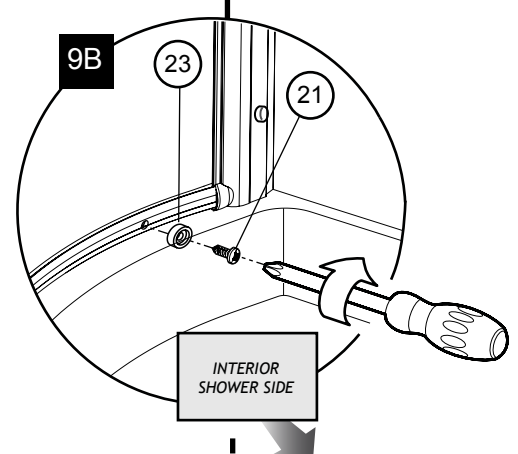
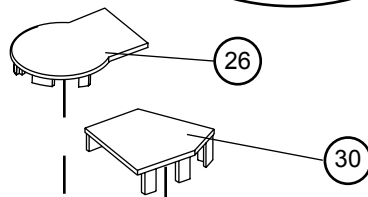
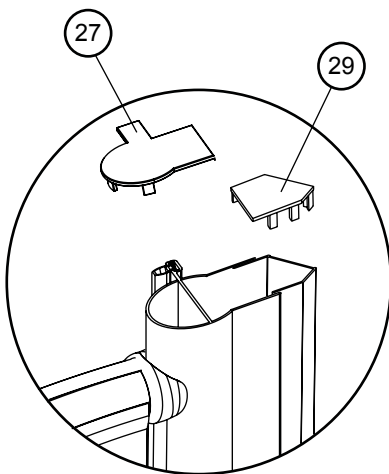
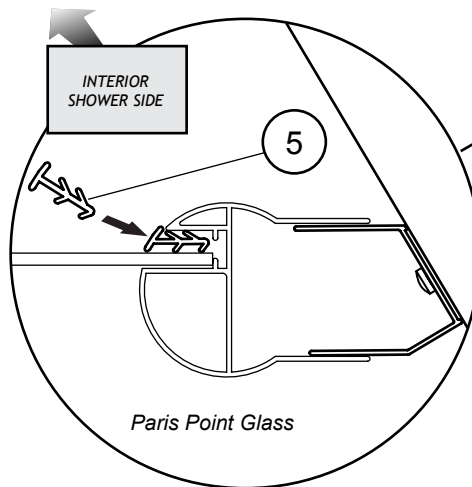
9A Using a mallet and block install the two vertical gaskets (#5). One between the expander and fix panel, the second between the vertical column and fix panel. The gasket must be installed inside the shower.



9B The bumper (#23) is located on the bottom track opposite the opening of the door.



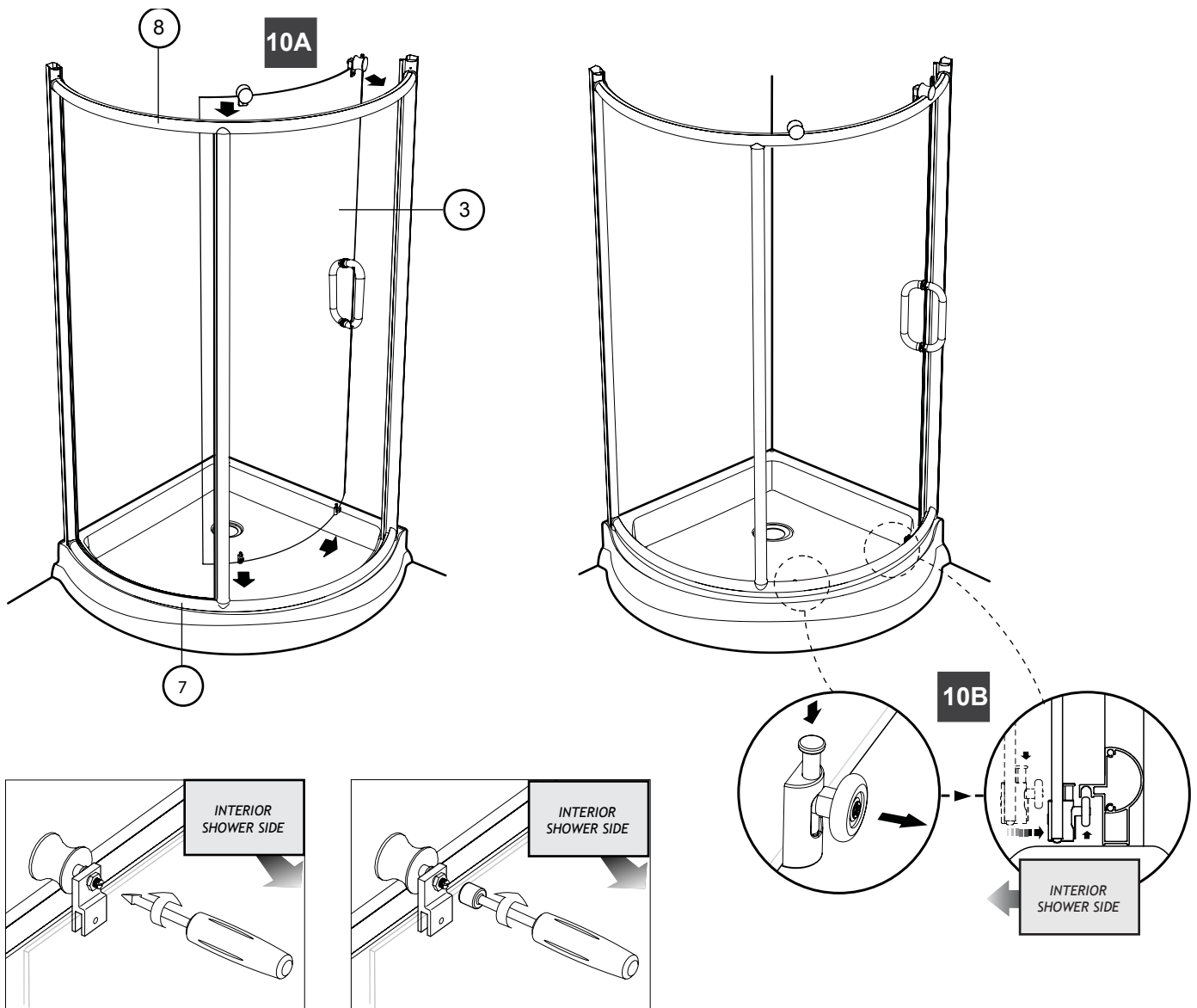
9C Place the expander caps on the expanders and wall jambs.



9C

10 DOOR INSTALLATION

- 10A *Place the top rollers of the door panel on the top track and push on the bottom sliders to engage them in to the bottom track.*



- 10B *Slightly unscrew the nut of the top rollers of the door panel this will allow you to adjust the door. Screw it back by ensuring verticality with the level .*

11 CAULKING

11A Silicone exterior the bottom track (#7) and along the wall jambs (#1) and the bottom of the fix panel.

