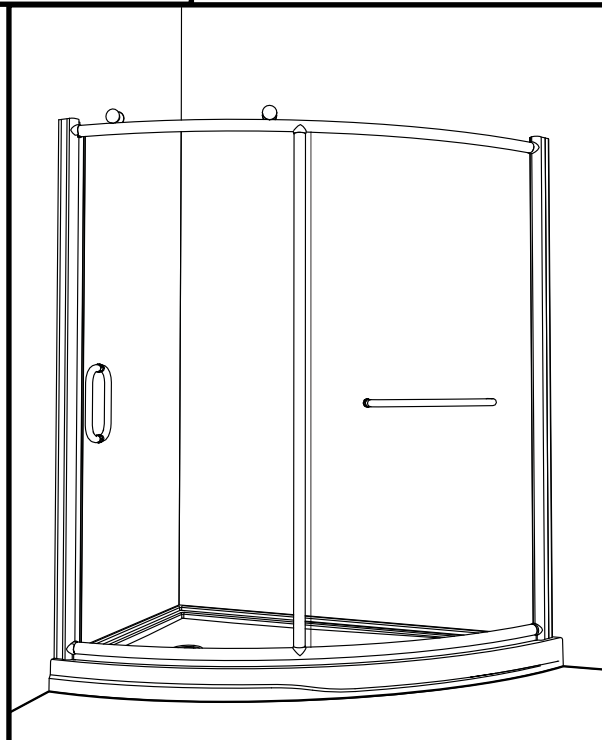
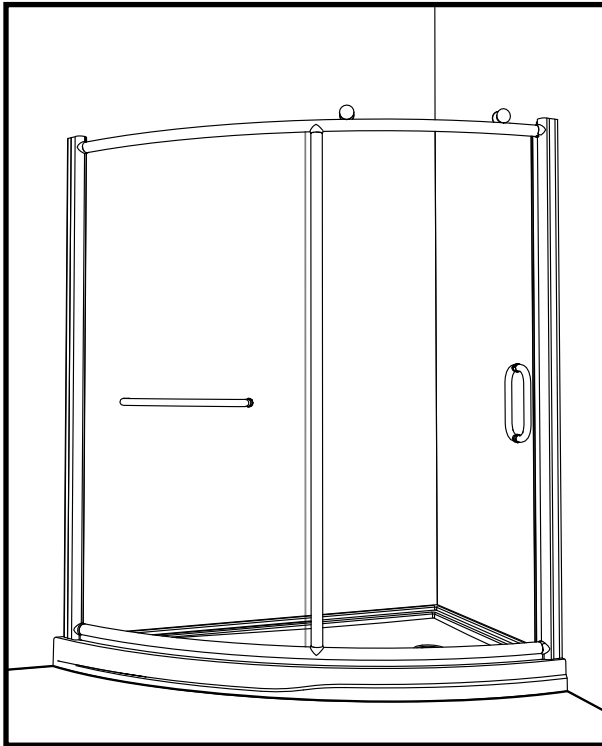


K-NC91Z-66-75
INSTRUCTION MANUAL

 **ALUMAX**
Kula Collection

Nalu Curved glass Panel and door



07.10

KN003

Please keep this manual and product code number for future reference and replacement parts ordering if necessary.

GENERAL INSTRUCTIONS

- *Read this manual carefully and completely before proceeding.*
- *It is recommended that you wear safety glasses at all times during the installation.*

INSTALLATION OVER CERAMIC TILES

- *Silicone should be used to seal the gap where the ceramic tiles meet the fixed panel.*
- *If your shower door is to be installed over ceramic tiles, the tiles should lay completely under the wall jamb.*

NOTICE

- *Caulking: no sealant is required inside the shower. Unless otherwise stated.*
- *Some models are equipped with clear sealing gaskets.*

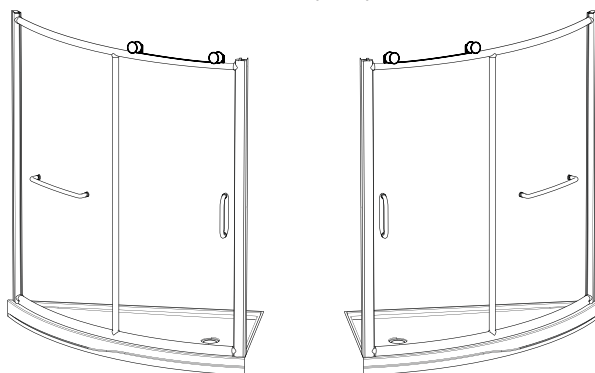
CARE FOR YOUR SHOWER DOOR

- *Never use scouring powder pads or sharp instruments on metal pieces or glass panels. An occasional wiping down with a mild soap diluted in water is all that is needed to keep the panels and aluminum parts looking new.*
- *We recommend wiping the glass panels with a squeegee after each use.*

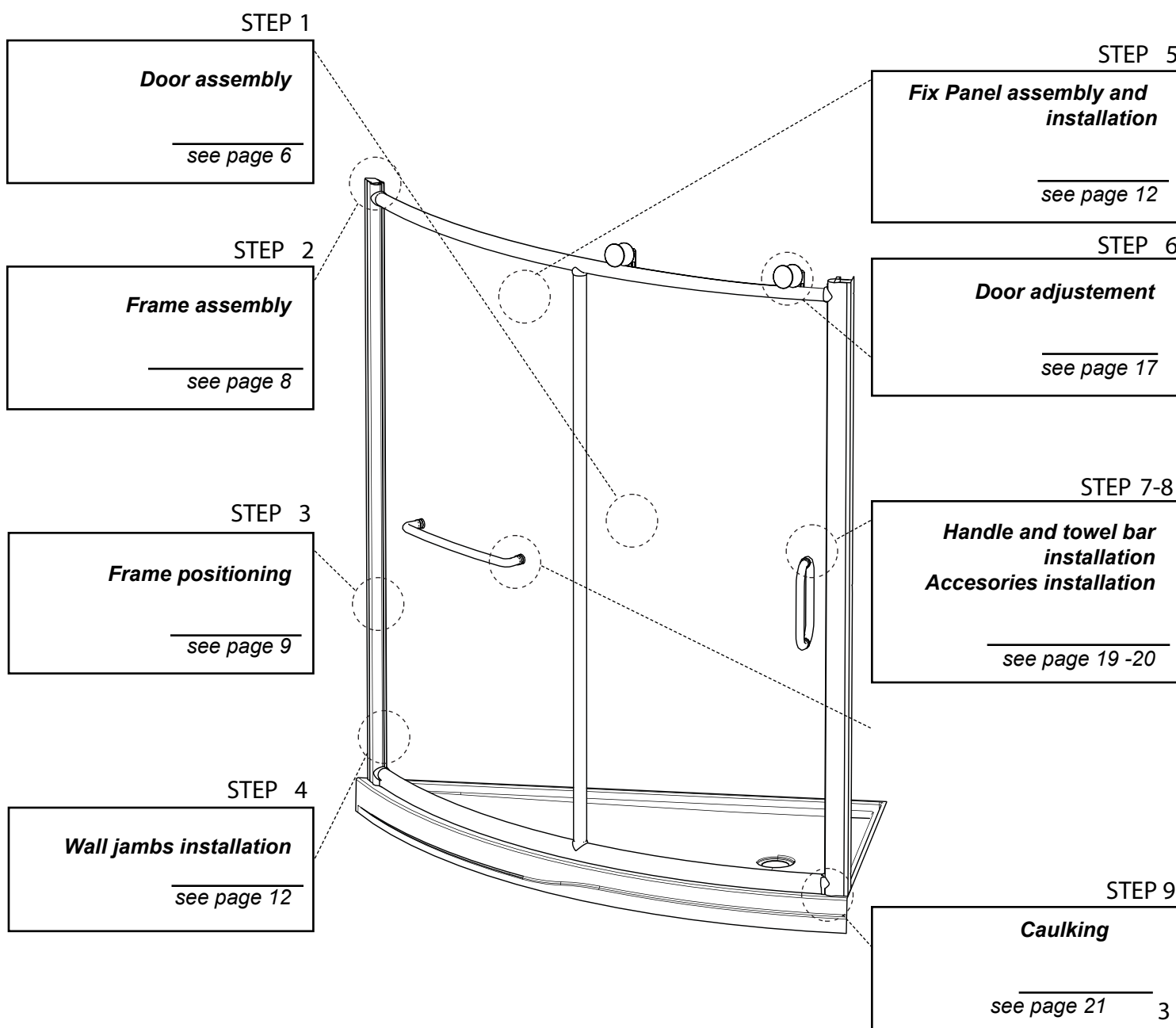
Product specifications are subject to change without notice.

Possible configurations

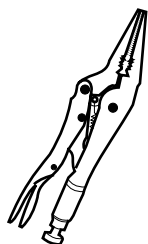
Follow the installation steps require for the model



INSTALLATION OF COMPONENTS



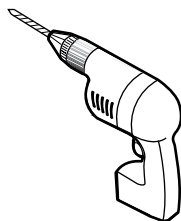
TOOLS AND MATERIAL REQUIRED



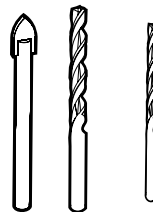
LONG NOSE LOCKING PLIER



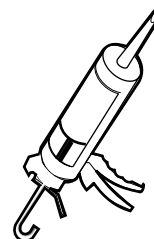
SCREWDRIVERS



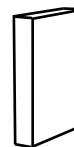
DRILL



1/4" & 1/8" DRILL BITS



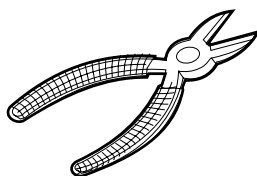
SILICONE



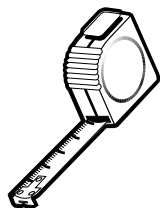
BLOCK



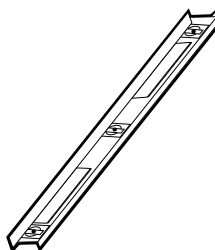
PENCIL



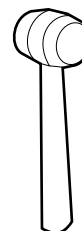
CUTTING PLIER



TAPE MEASURE



LEVEL



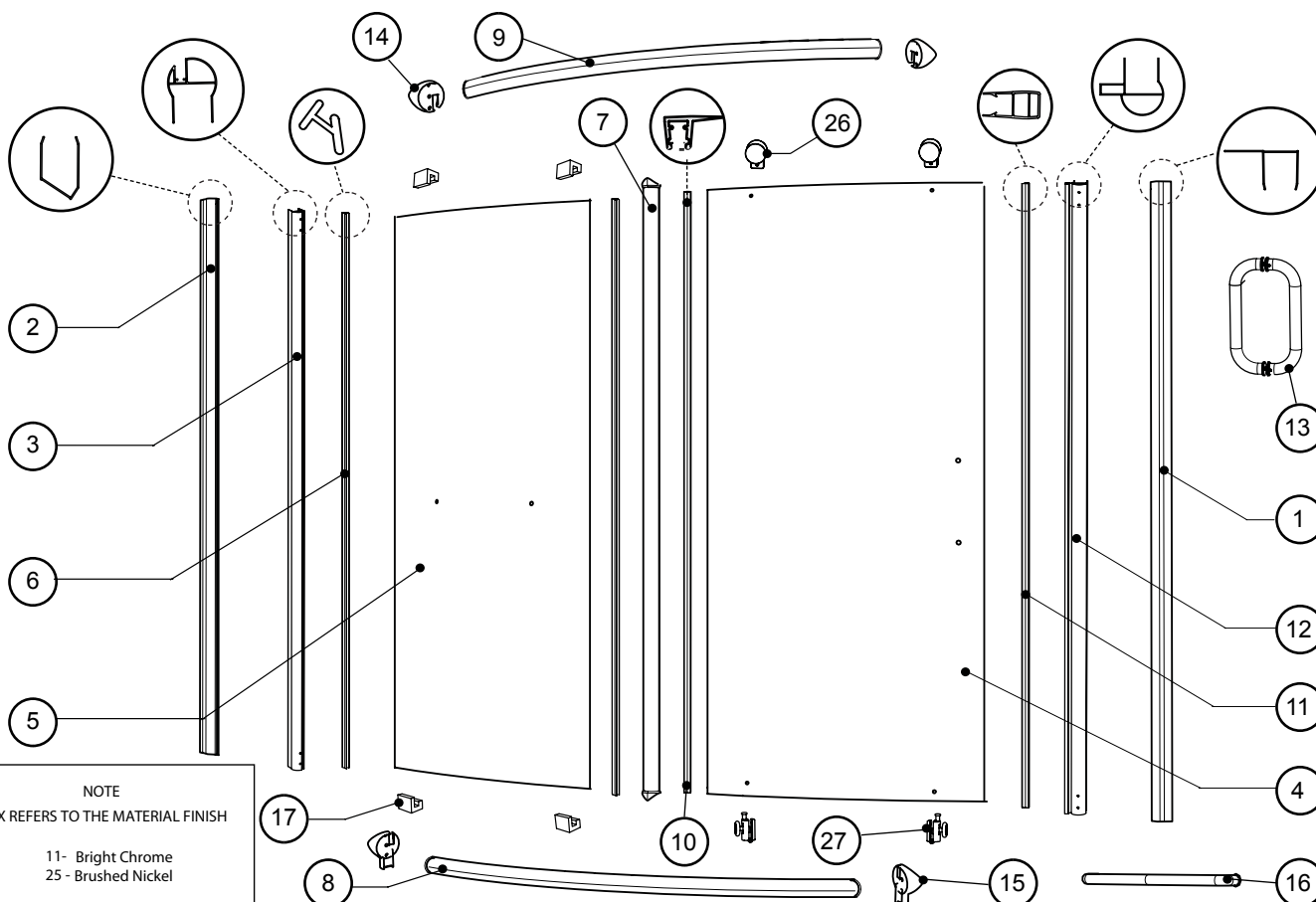
MALLET



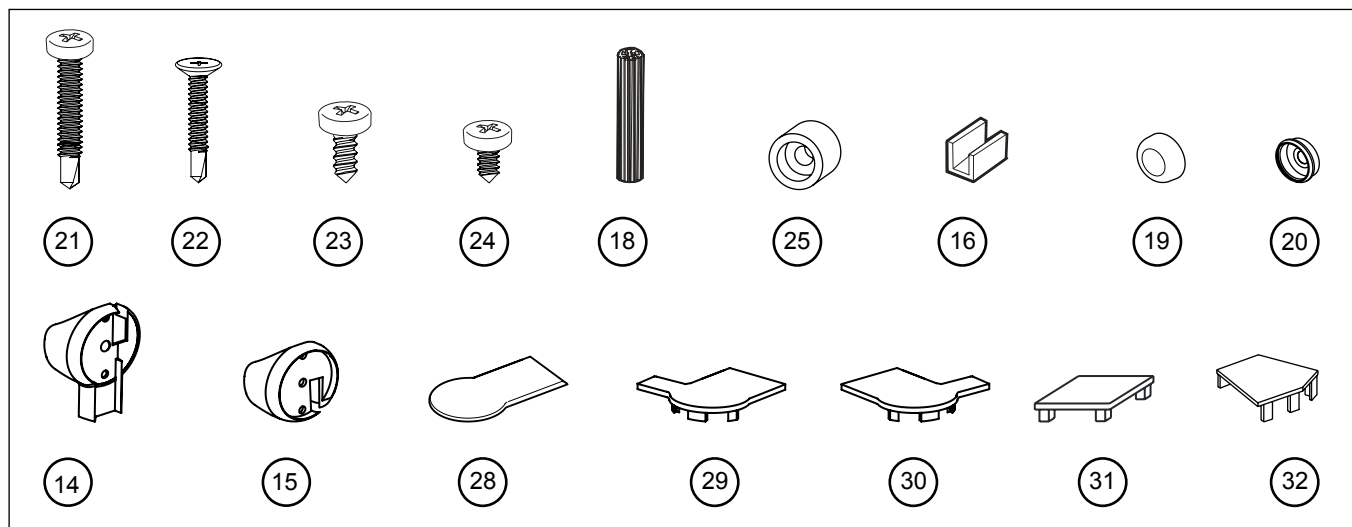
5/16" HEX NUT DRIVER

* To install the shower door on ceramic tiles, use a 1/4" drill bit for ceramic tiles.

PARTS LISTING



PARTS LISTING

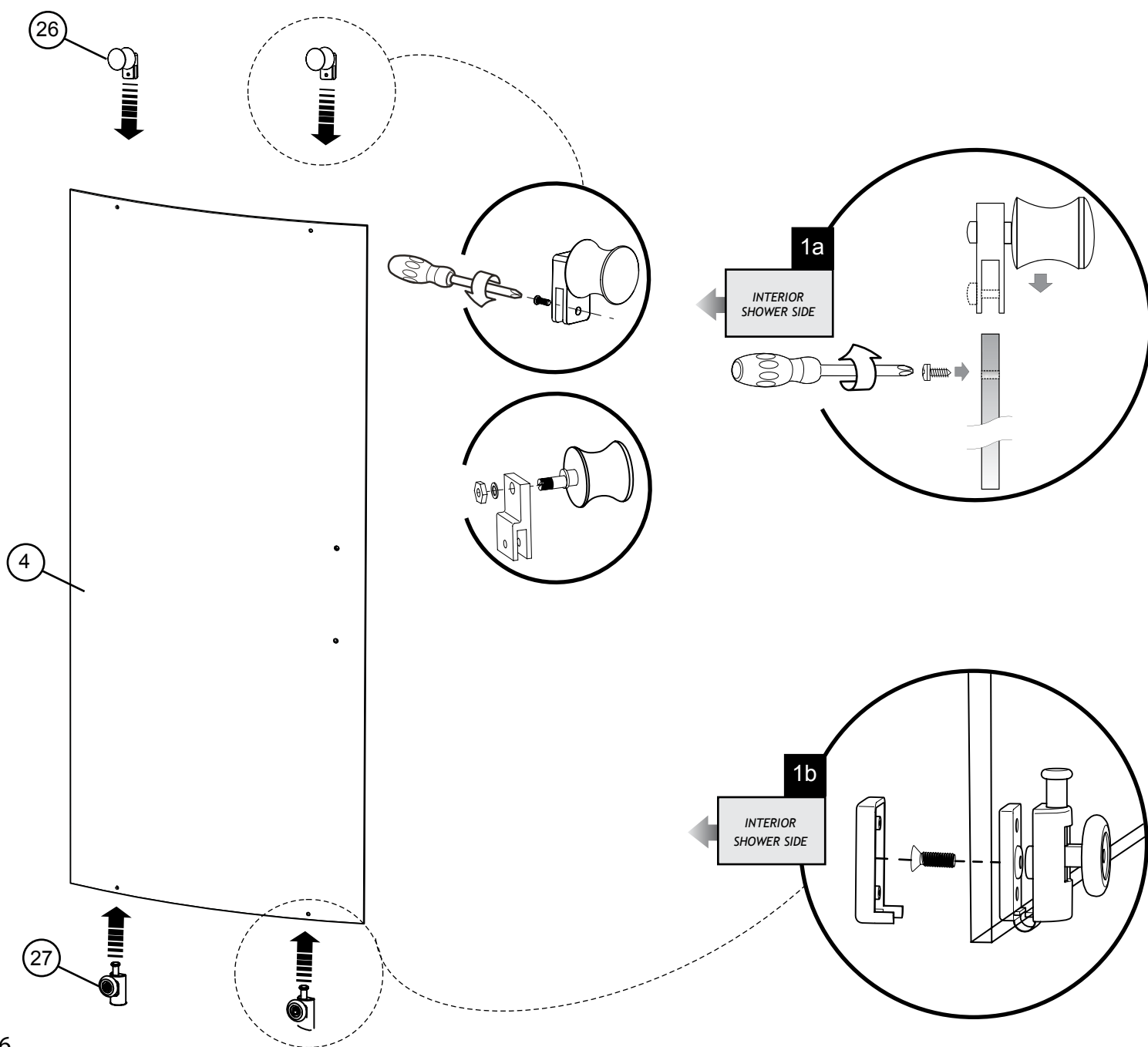


ITEM	PARTS	DIMENSION (in)	QTY
1	WALL JAMB	75"	1
2	CORNER WALL JAMB	75	1
3	EXPANDER	75 1/8"	1
4	DOOR PANEL	33" x 73 7/8"	1
5	SIDE PANEL	38 1/16" x 72"	1
6	VERTICAL GASKET	71 3/4"	2
7	VERTICAL COLUMN	69 7/8"	1
8	BOTTOM TRACK	68 3/4"	1
9	TOP TRACK	68 3/4"	1
10	DOOR SIDE GASKET	73 13/16"	1
11	MAGNETIC DOOR GASKET	73 7/8 "	1
12	MAGNETIC EXPANDER	75 1/8"	1
13	SET OF HANDLES		1
14	TOP CONNECTOR		2
15	BOTTOM CONNECTOR		2
16	TOWEL BAR		1
ITEM	HARDWARE	DIMENSION (in)	QTY
17	GLASS SUPPORT		4
18	WALL PLUG	1/4" x 1 1/8"	6
19	SCREW CAP		9
20	BACK SCREW CAP		9
21	PAN SELF DRILLING SCREW #M4-35	1 3/8"	14
22	FLAT HEAD SELF DRILLING SCREW # M4-20	1"	2
23	PAN HEAD SCREW #M4-12	1/2"	1
24	PAN CREW #M4-10	3/8"	6
25	STOPPER	Ø 7/16"	1
26	TOP WHEELS		2
27	BOTTOM WHEELS		2
28	COVER FOR THE EXPANDER		1
29 / 30	COVER FOR THE MAGNETIC EXPANDER		1
31	COVER FOR THE WALL JAMB		1
32	COVER FOR THE ANGLE WALL JAMB		1

1

DOOR ASSEMBLY

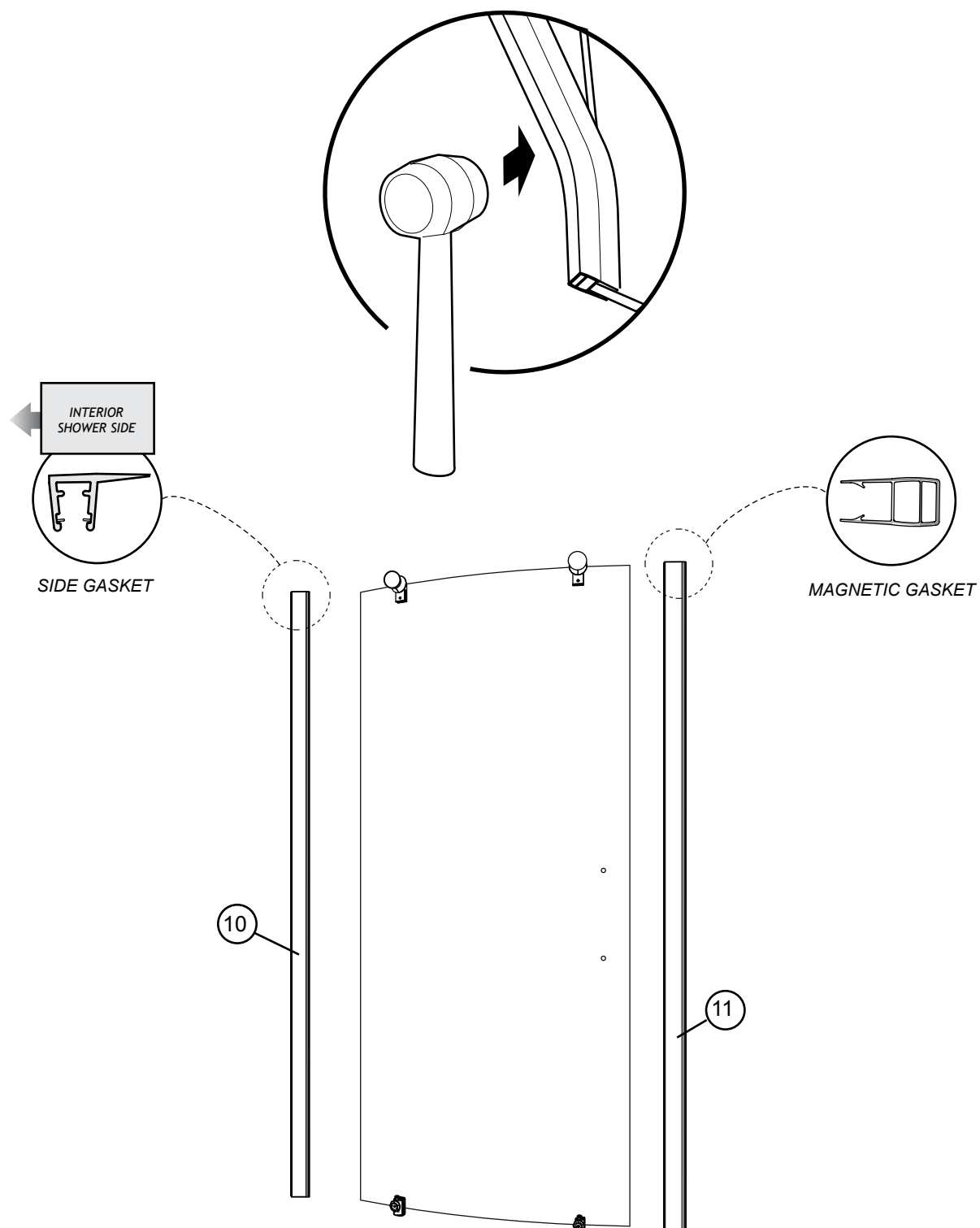
- 1a. *Install the rollers on the door panel so that the rollers point towards the outside of the shower.*
The vertical handle must always be on the opening side of the door towards the outside of the shower.
- 1b. *Install the bottom sliders on the door panel while placing the hooks towards the outside of the shower.*
Place the bottom slider cap over the screw.



1

DOOR ASSEMBLY (CONTINUED)

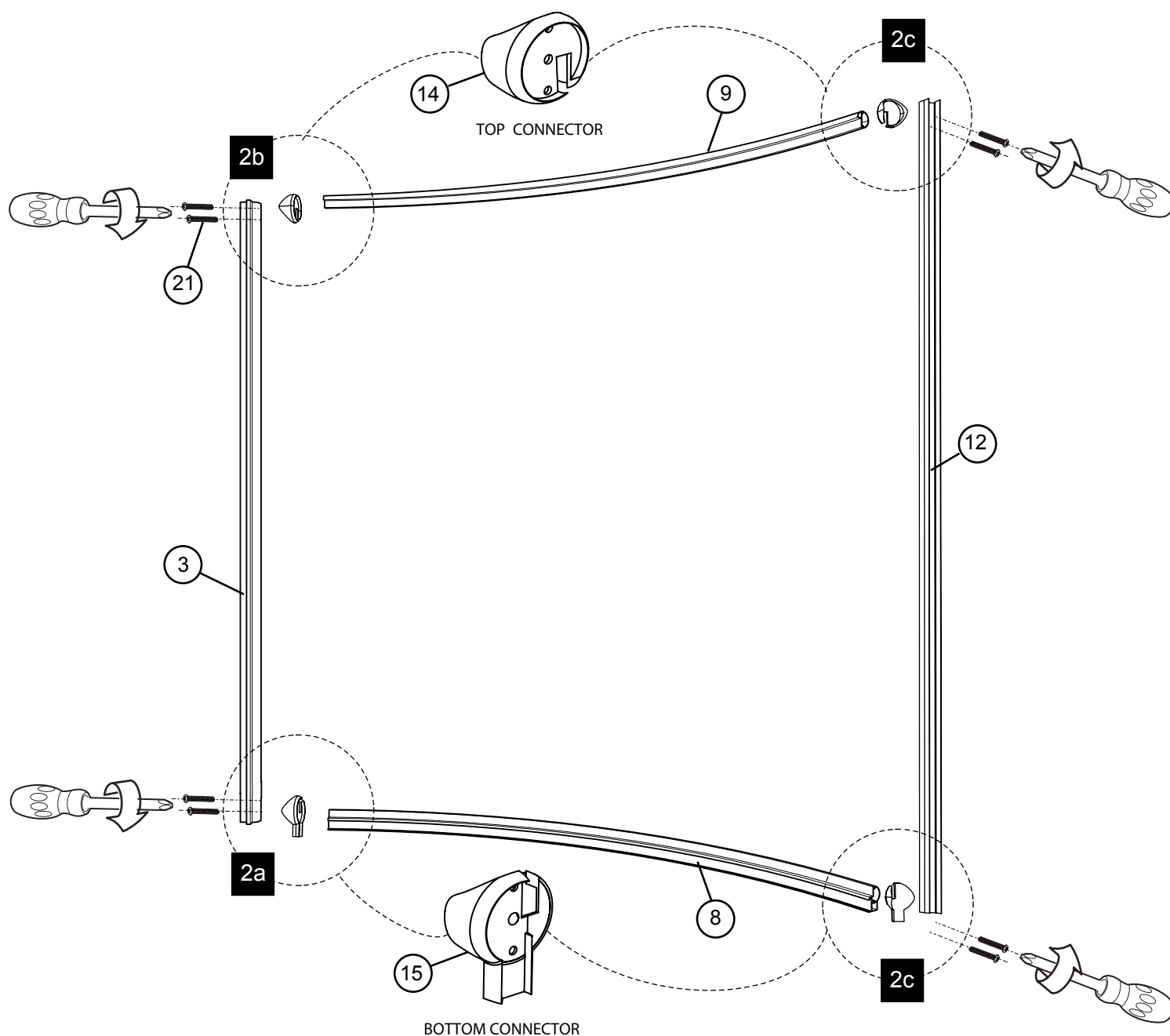
- 1c. Use a mallet to install the magnetic gasket and the side gasket on the door panel. Ensure the textured side of the glass panel is located towards the outside of the shower.



2

FRAME ASSEMBLY

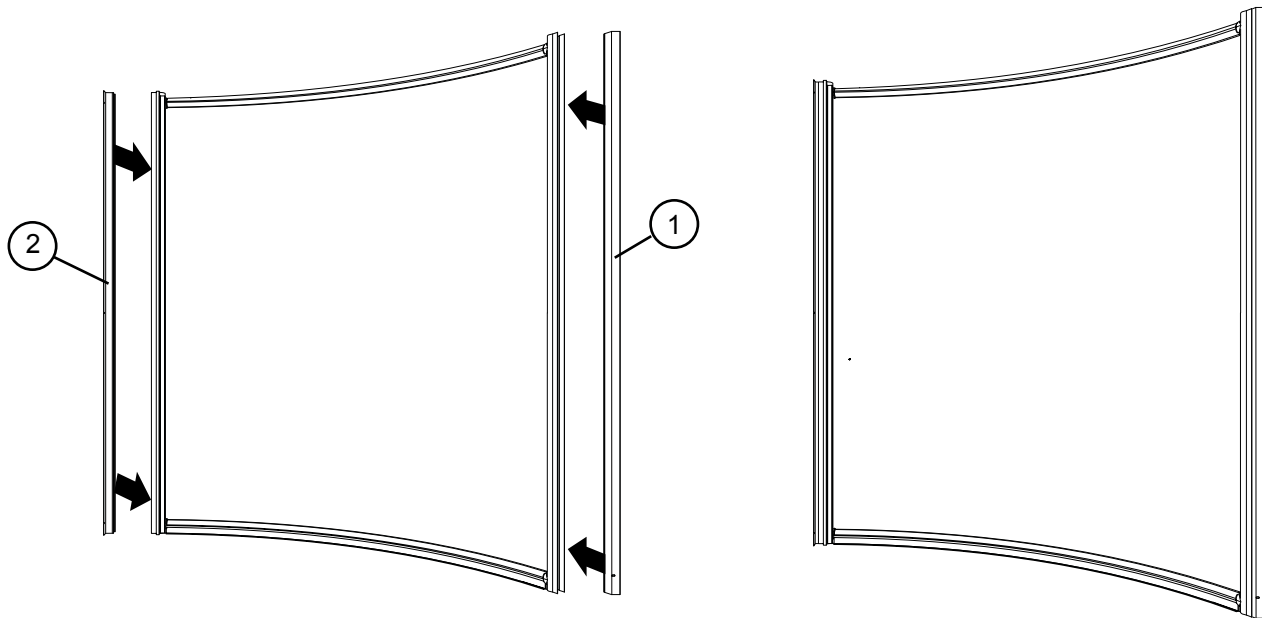
- 2a. Using 1 3/8" screws (2), fasten the expander to the bottom track by placing the bottom connector between the bottom track and expander.
- 2b. Fasten the top track using 1 3/8" screws (2) by placing the top connector between the top track and expander.
- 2c. Screw the magnetic expander to the top and bottom tracks using the 1 3/8" screws (4) by placing the two connectors in between.



2

FRAME ASSEMBLY (CONTINUED)

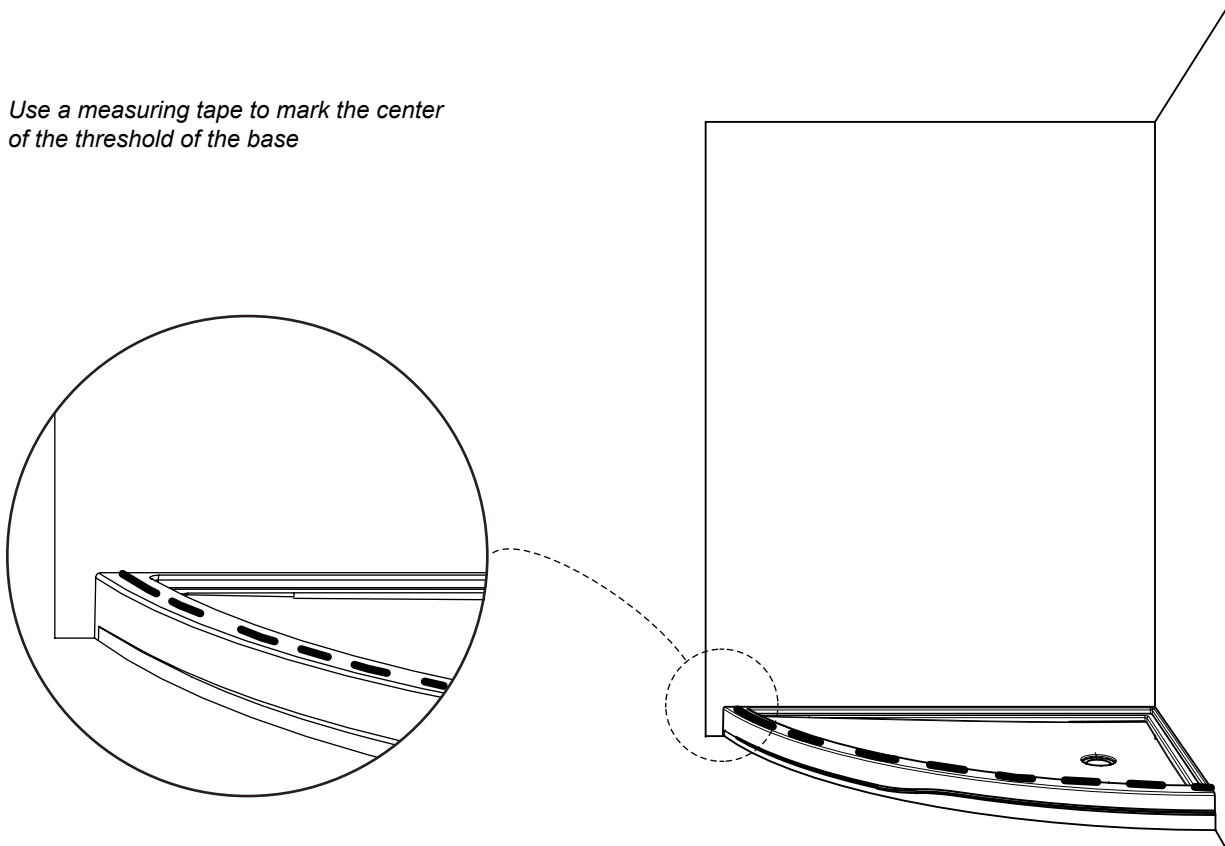
- 2d. *Insert the wall jambs into the expander and place the frame in its final position temporarily*



3

POSITIONING ON THE THRESHOLD

- 3a. *Use a measuring tape to mark the center of the threshold of the base*

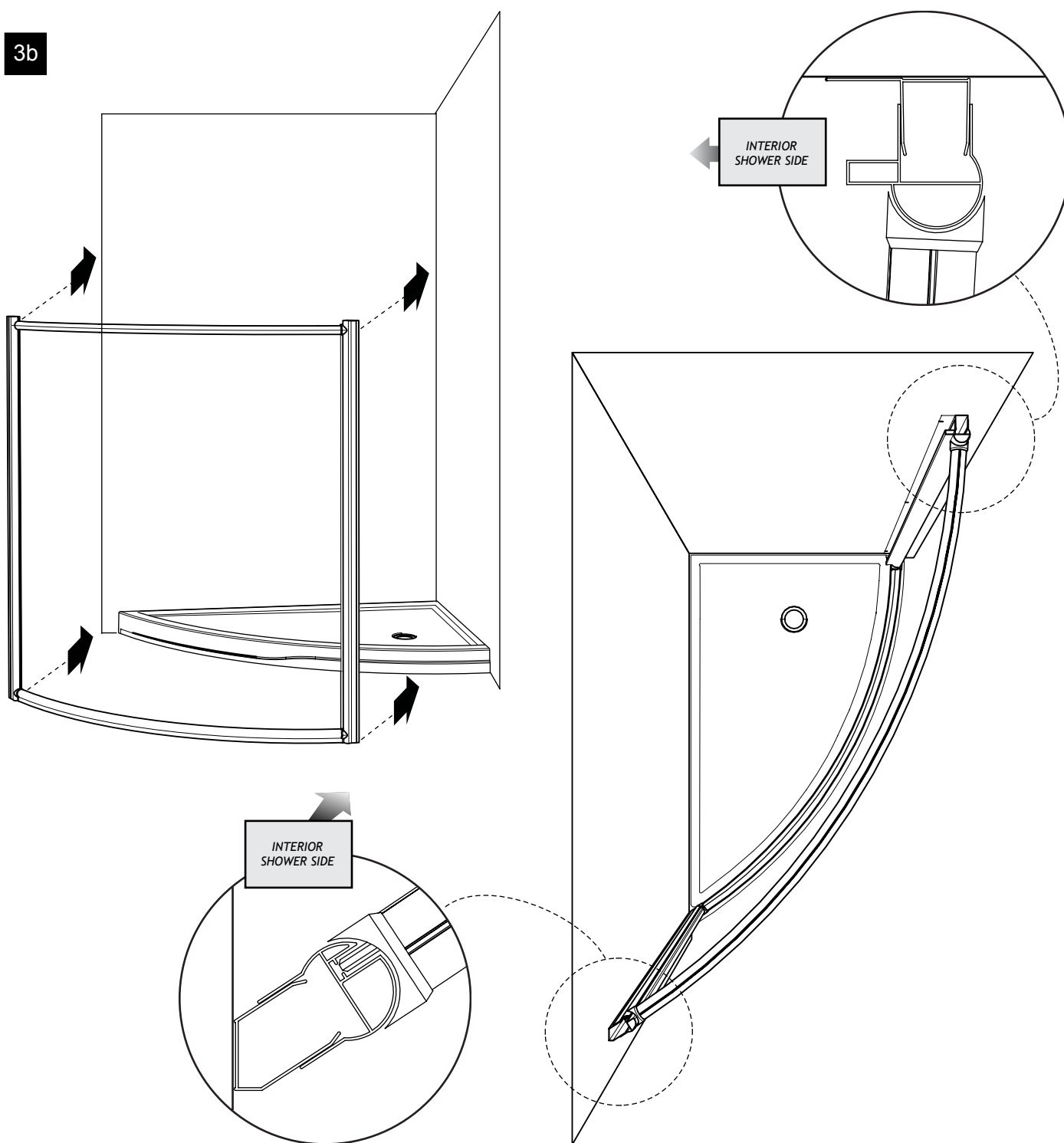


3

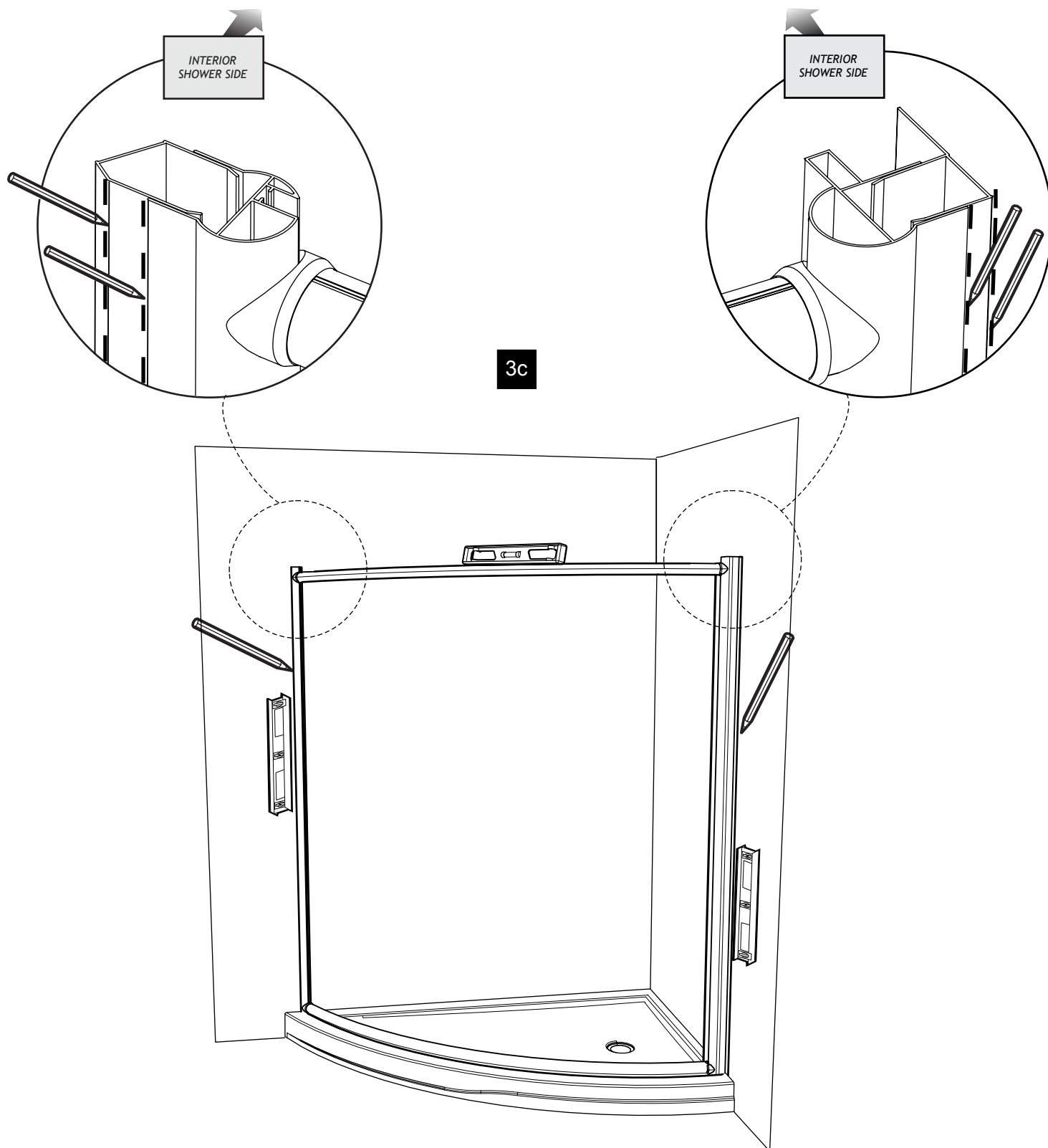
POSITIONNING ON THE THRESHOLD

3b. *Place the frame in its final position temporarily*

3c. *Level the shower frame. Mark the location of the frame and of the extensors on the wall jambs .*



3 POSITIONING ON THE THRESHOLD

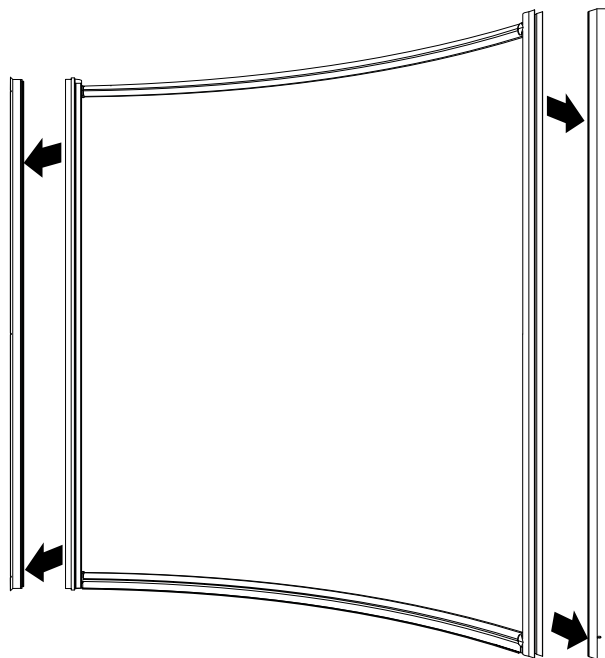
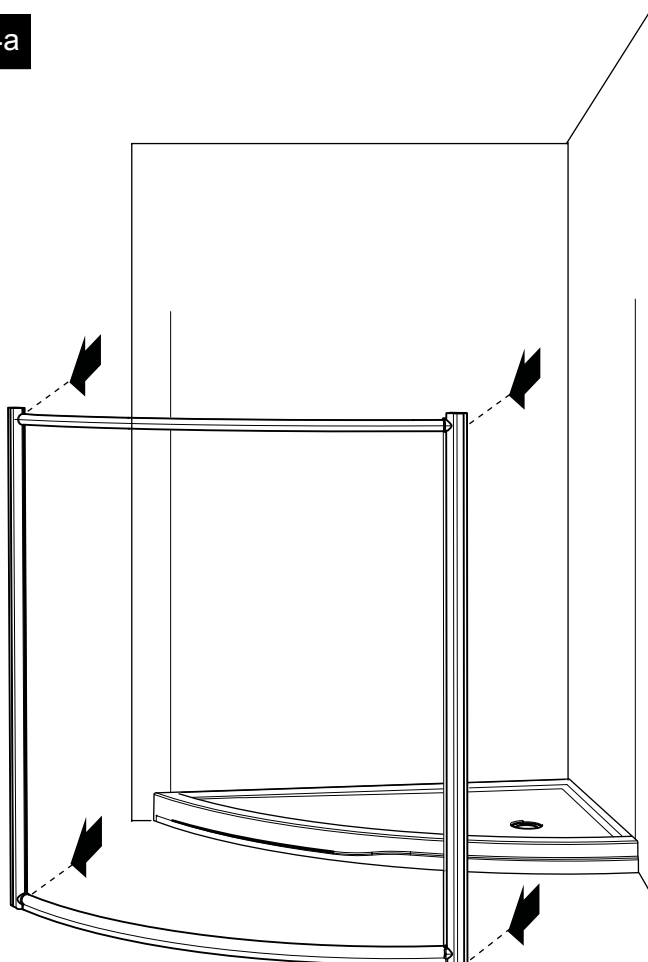


4

WALL JAMB INSTALLATION

- 4a. *Remove temporarily the frame and the two wall jambs.*
- 4b. *Reposition the wall jambs on the shower threshold using the marked lines. Mark the drilling location and remove the wall jambs.*
- 4c. *With a 1/4" drill bit , drill 3 holes on each side.*
- 4d. *Insert 6 wall plugs and put in each a drop of silicone .*

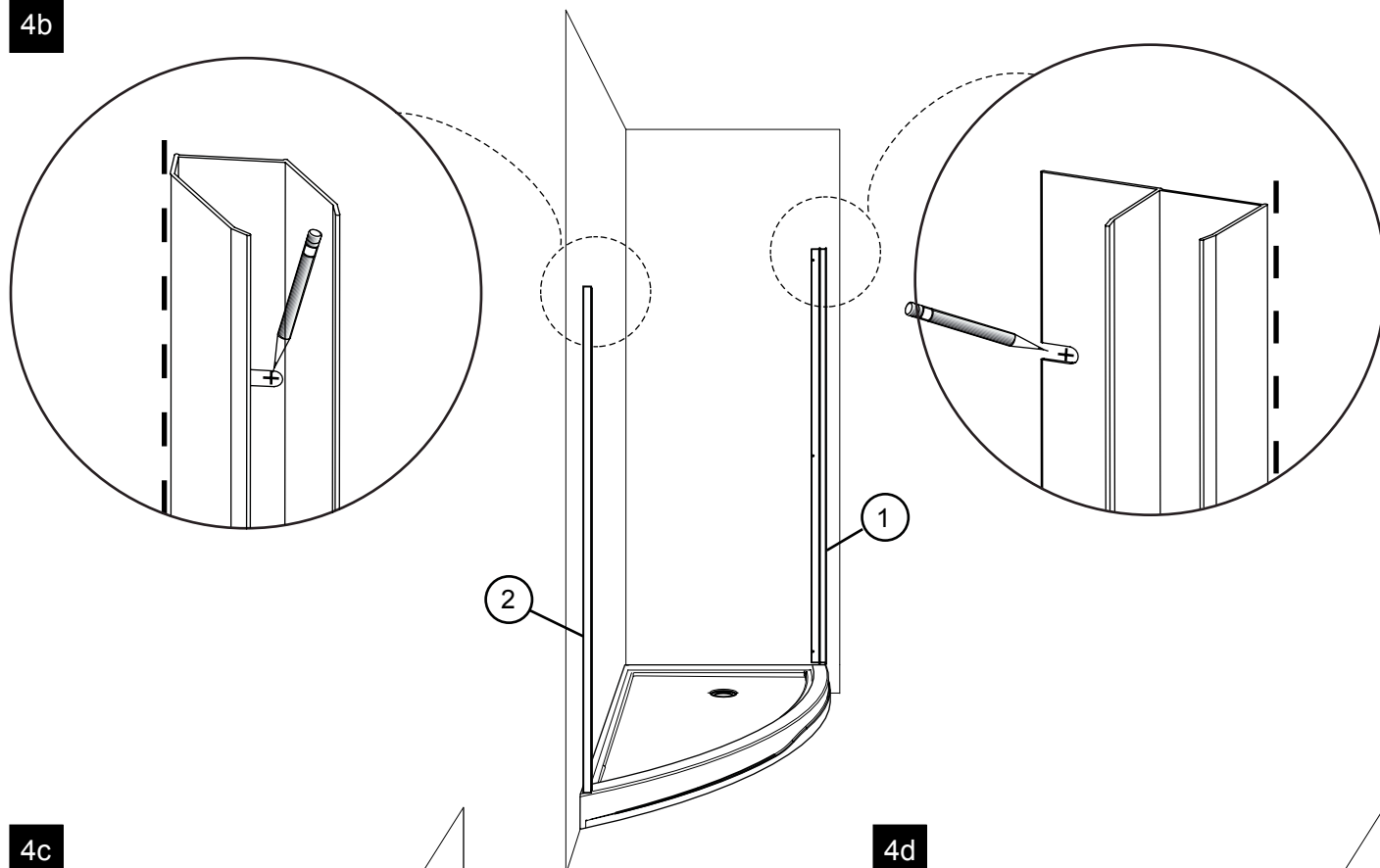
4a



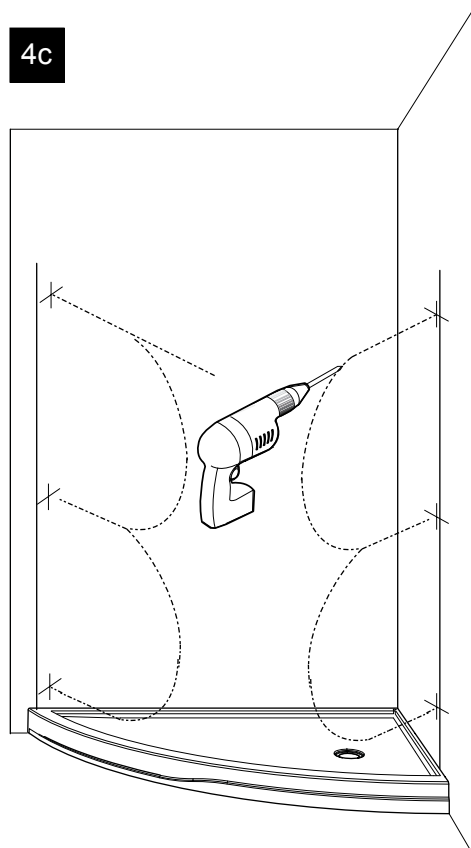
4

WALL JAMB INSTALLATION (CONTINUED)

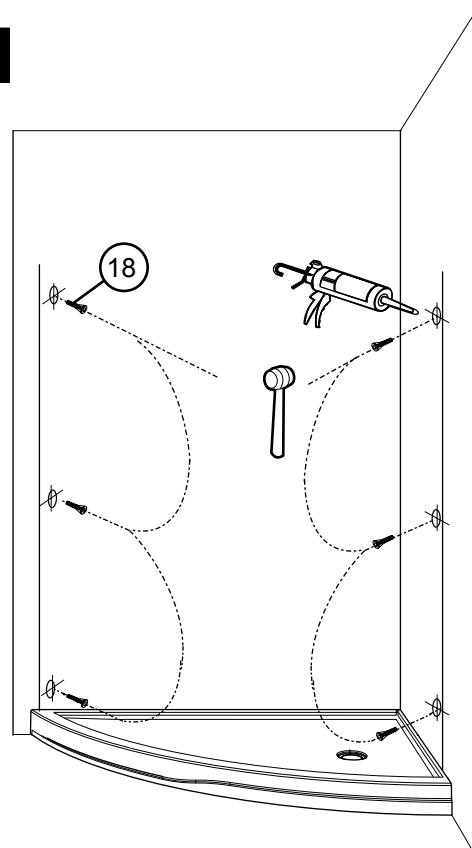
4b



4c

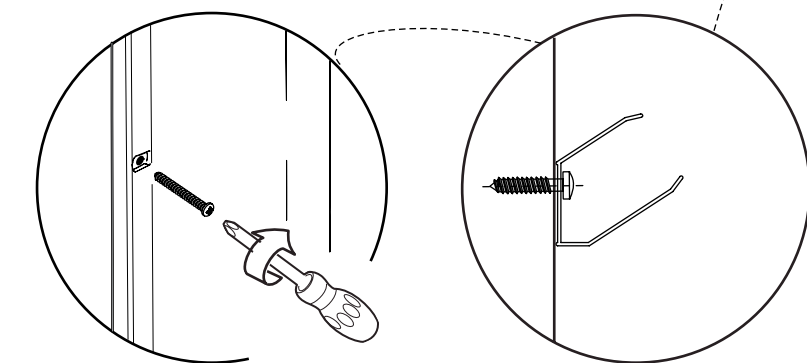
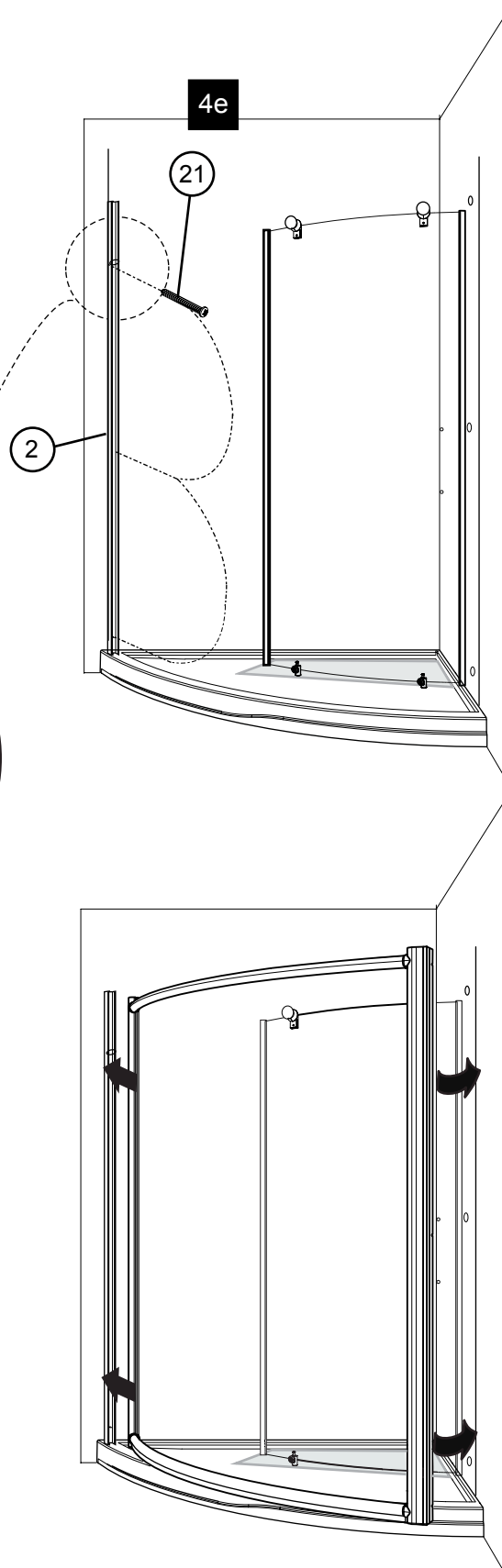


4d



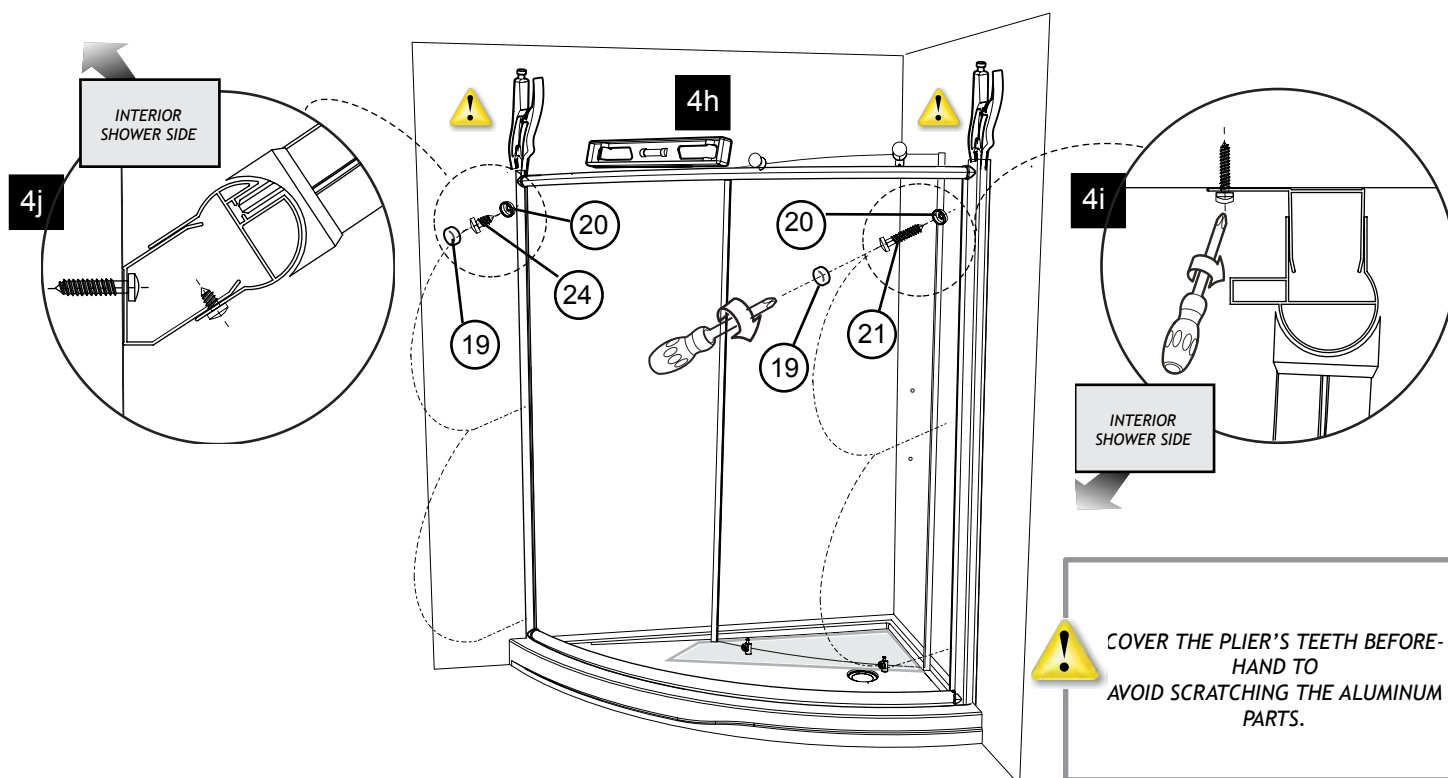
- 4e. Reposition the angle wall jamb on the shower threshold and screw it into the wall plugs already installed by using screws 1 3/8" (3) .
Place the door inside the shower area.
Use a cardboard to protect the base surface.

- 4f. Insert the second wall jamb. Reposition the frame onto the center of the threshold.



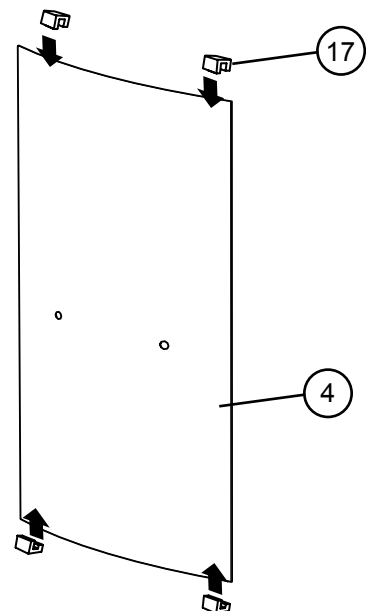
4 WALL JAMB INSTALLATION (CONTINUED)

- 4h. Level the top track and bottom track, by using locking pliers . Clamp the expanders with their wall jambs.*
- 4j. Screw the wall jamb into the wall plugs already installed by using screws 1 3/8" (3) and place the screw caps . Secure the expanders with the wall jambs by using the 3/8" self drilling screws (6) and screw caps (6).

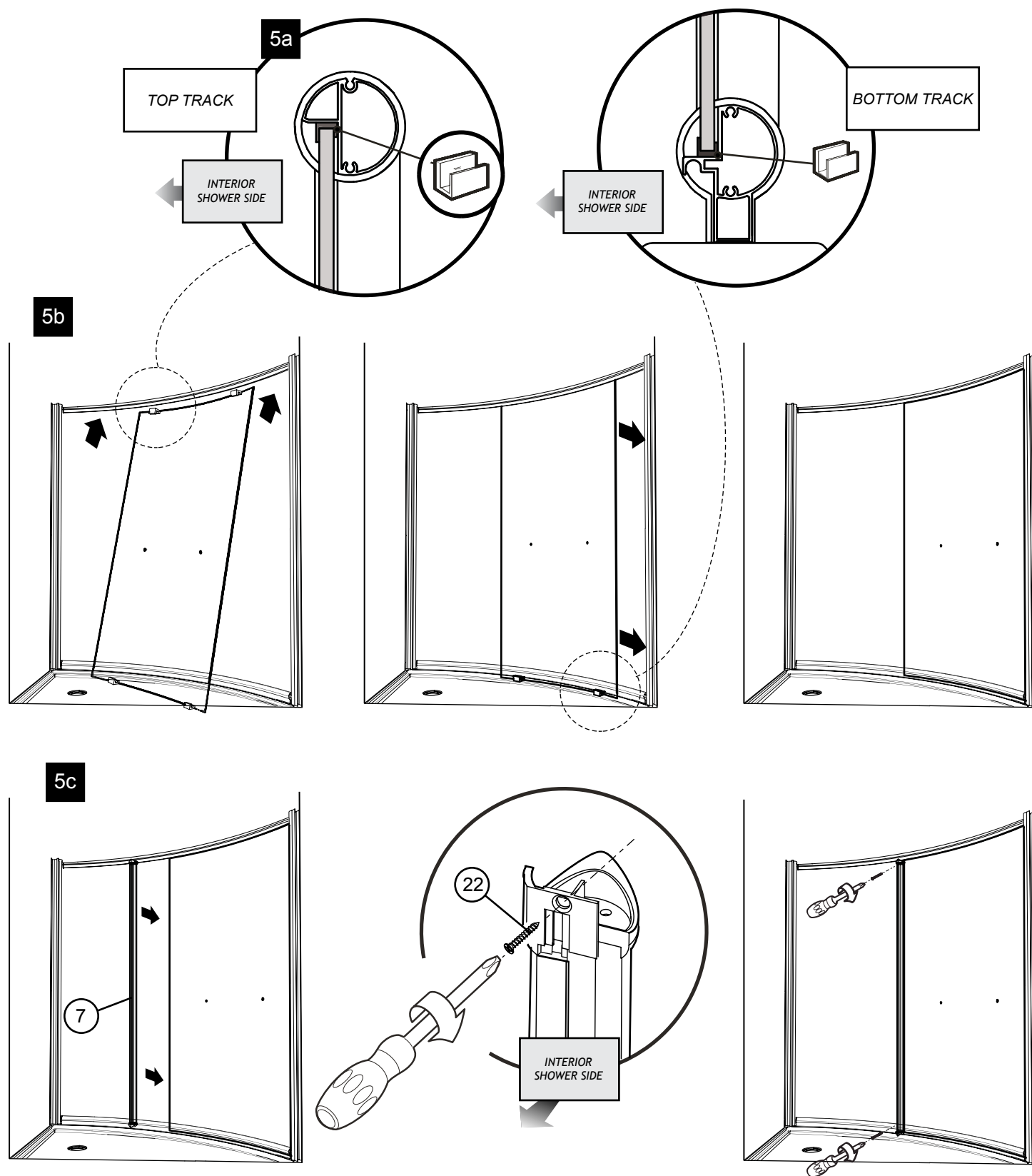


5 FIX PANEL ASSEMBLY

- 5a. Place glass clips (4) on the bottom and top edge of the fixed panel and slide it into the expander and bottom and top track.
- 5b. Install the fix panel as shown.
- 5c. Insert the vertical column onto the fixed panel and screw into the top and bottom track using the 3/4" screws (2).



5 FIX PANEL ASSEMBLY (CONTINUED)



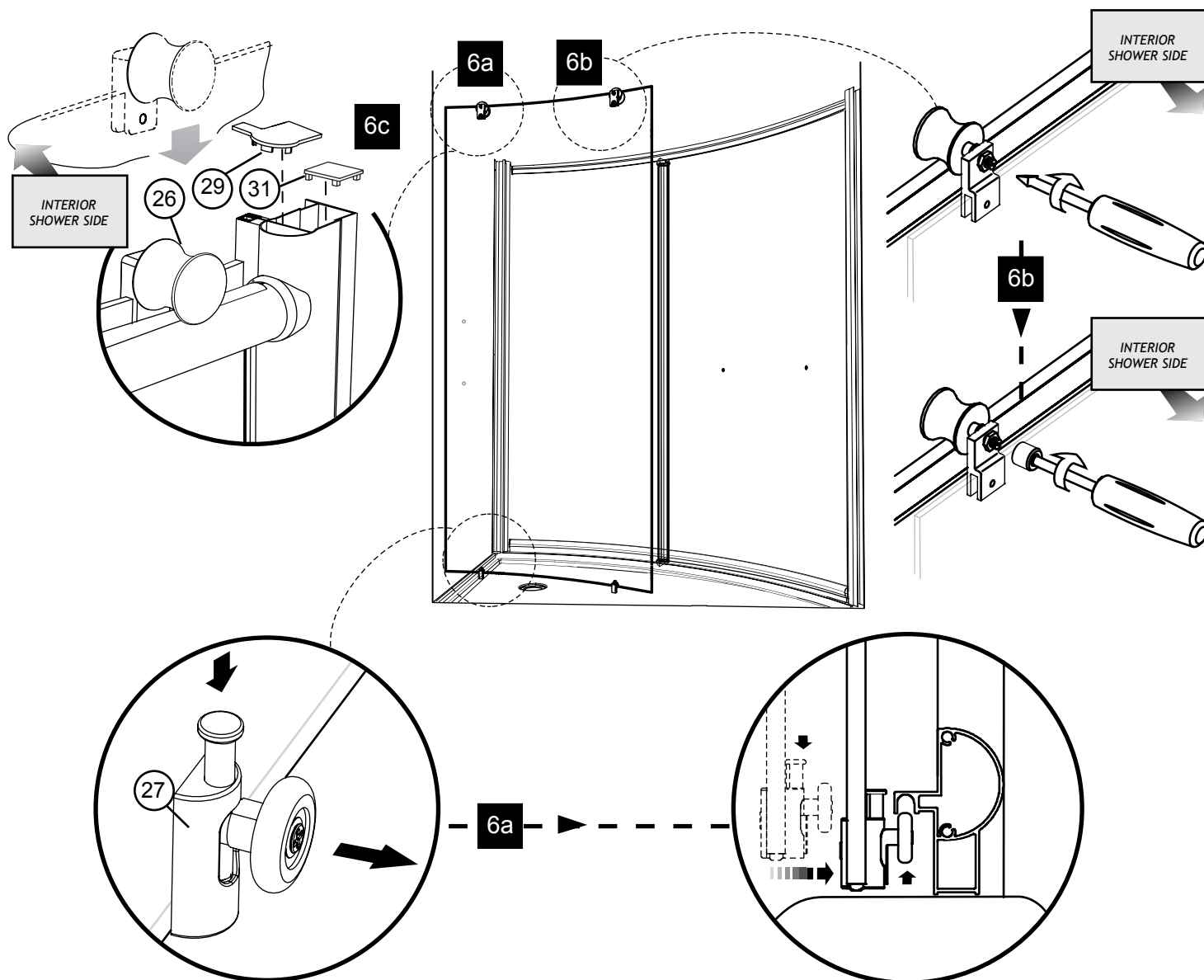
6

DOOR PANEL ASSEMBLY

6a. Place the top rollers of the door panel on the top track and push on the bottom sliders to engage them into the bottom track.

6b. Slightly unscrew the nut of the top rollers of the door panel this will allow you to adjust the door. Screw it back by ensuring verticality with the level.

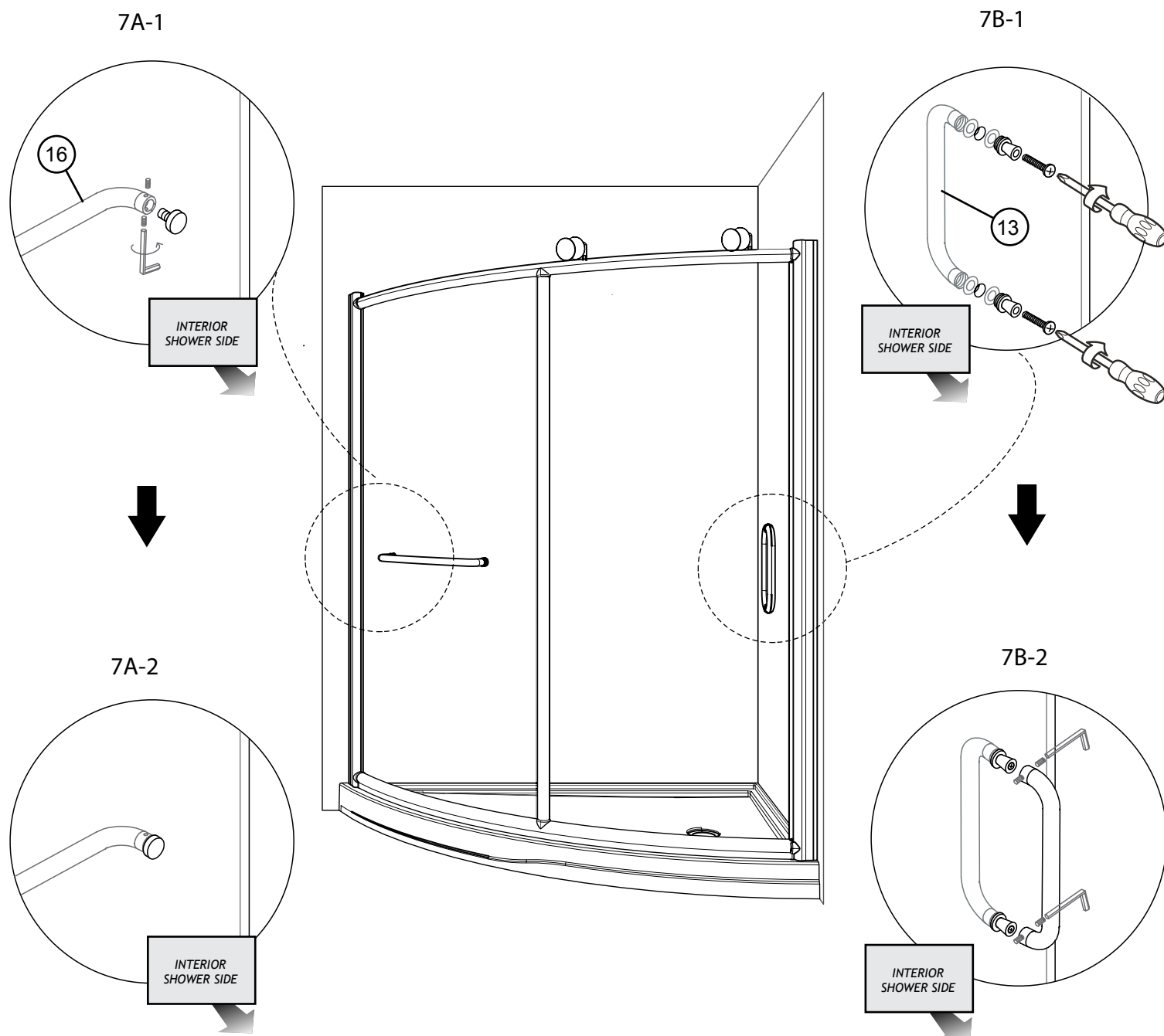
6c. Place the expander caps on the expanders.



HANDLE AND TOWEL BAR INSTALLATION

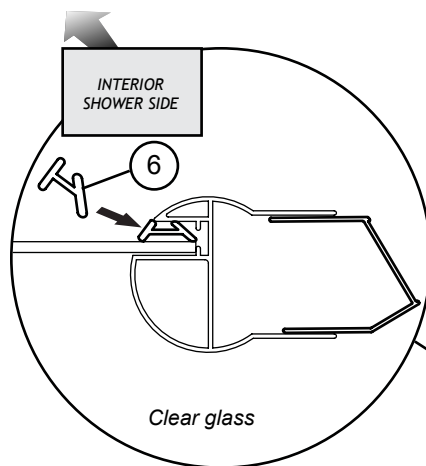
7a. Using an hex key to install the towel barr as shown.

7b. Install the handle as shown.

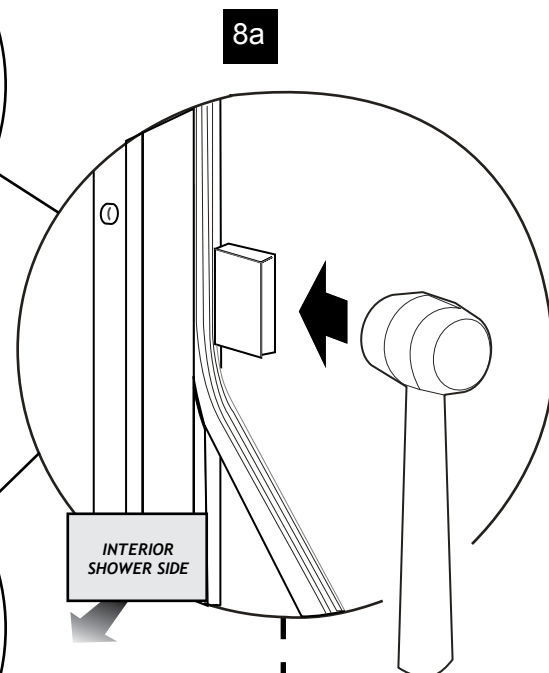


8 ACCESSORIES INSTALLATION

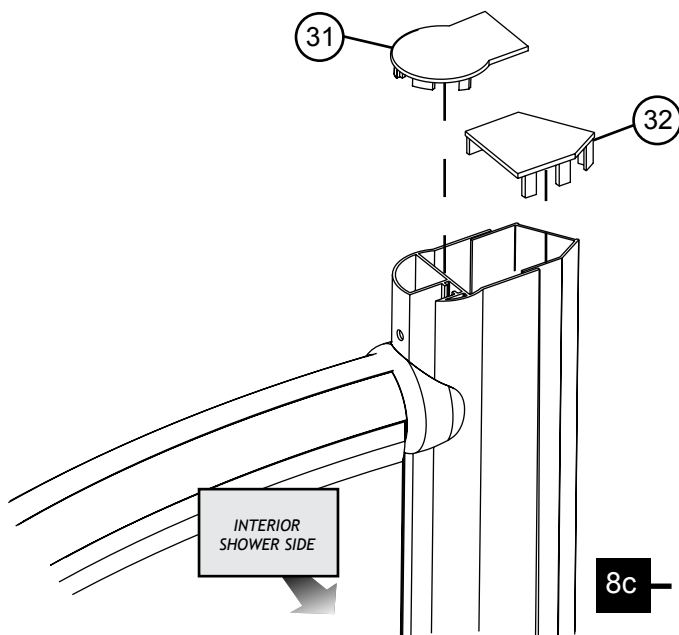
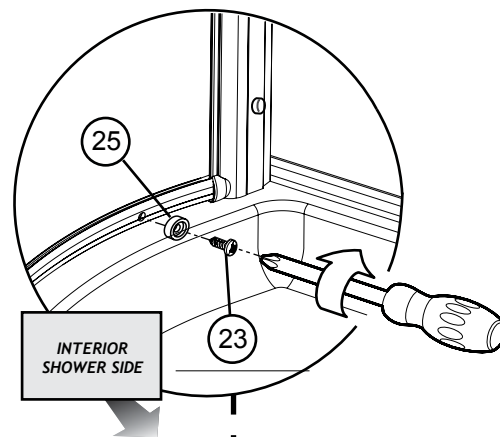
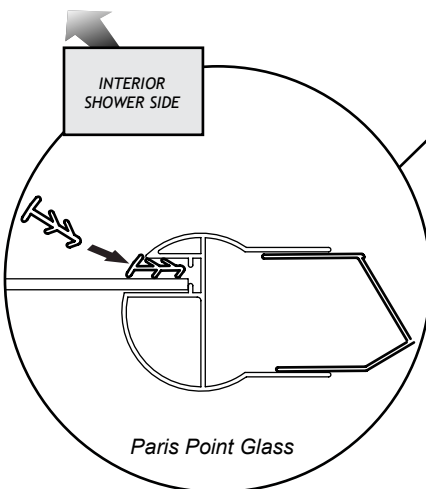
- 8a. Using a mallet and block install the vertical gasket between the expander and fix panel. The gasket must be installed inside the shower.



- 8b. The bumper is located on the bottom track opposite the opening of the door. Use a screw 1/2" to install the bumper.

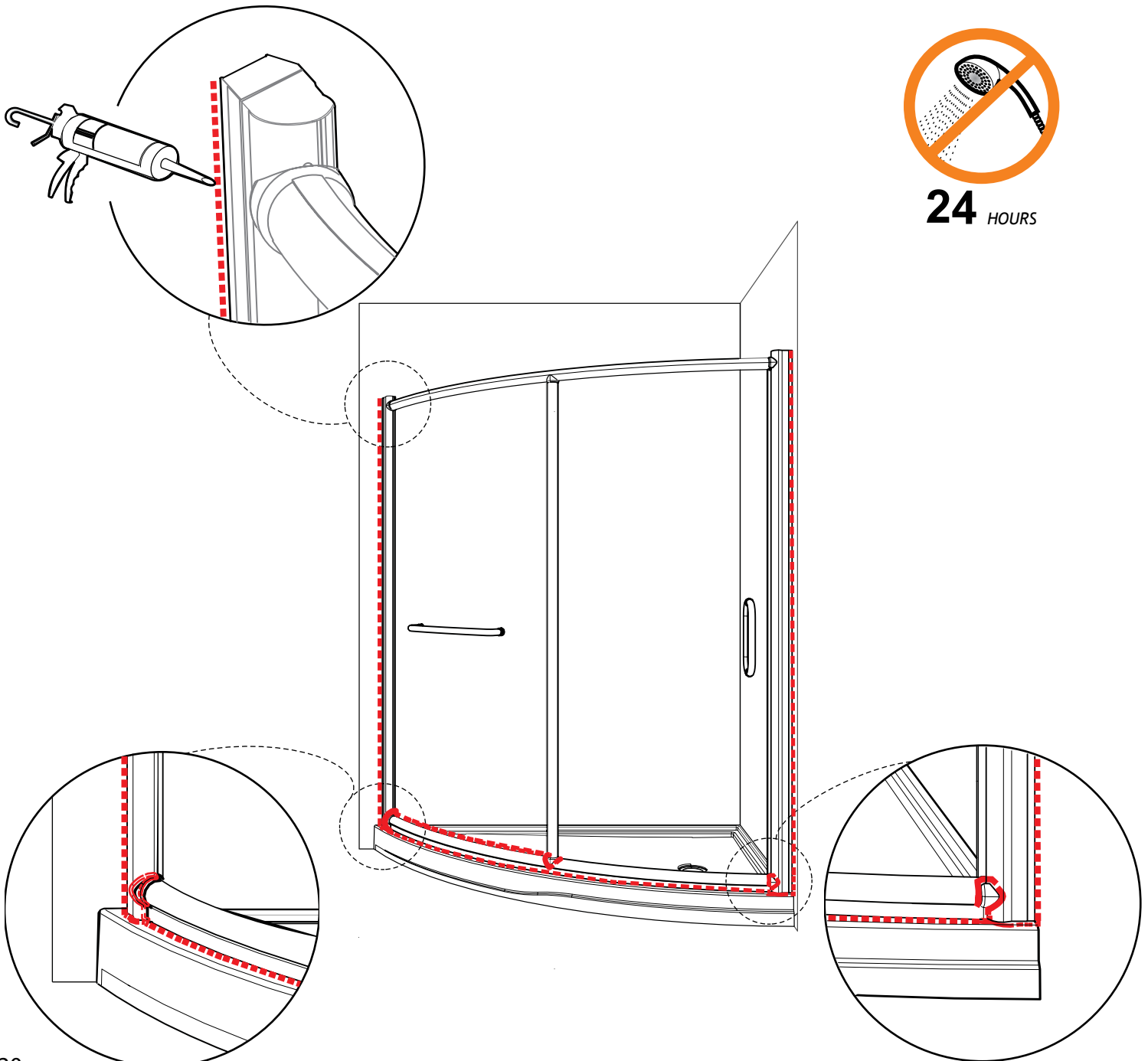


- 8c. Place the expander caps on the expanders.



9a. Silicone the outside of the frame between the wall and the wall jamb, along the bottom rail, below the fix panel and at the bottom of the return panel if applicable.

9b. Wait 24 hours before using the shower to allow the silicon to dry.



This image shows a blank sheet of white paper with horizontal ruling lines. The lines are evenly spaced and extend across the width of the page, typical of notebook or legal stationery. There are no margins, text, or other markings present.