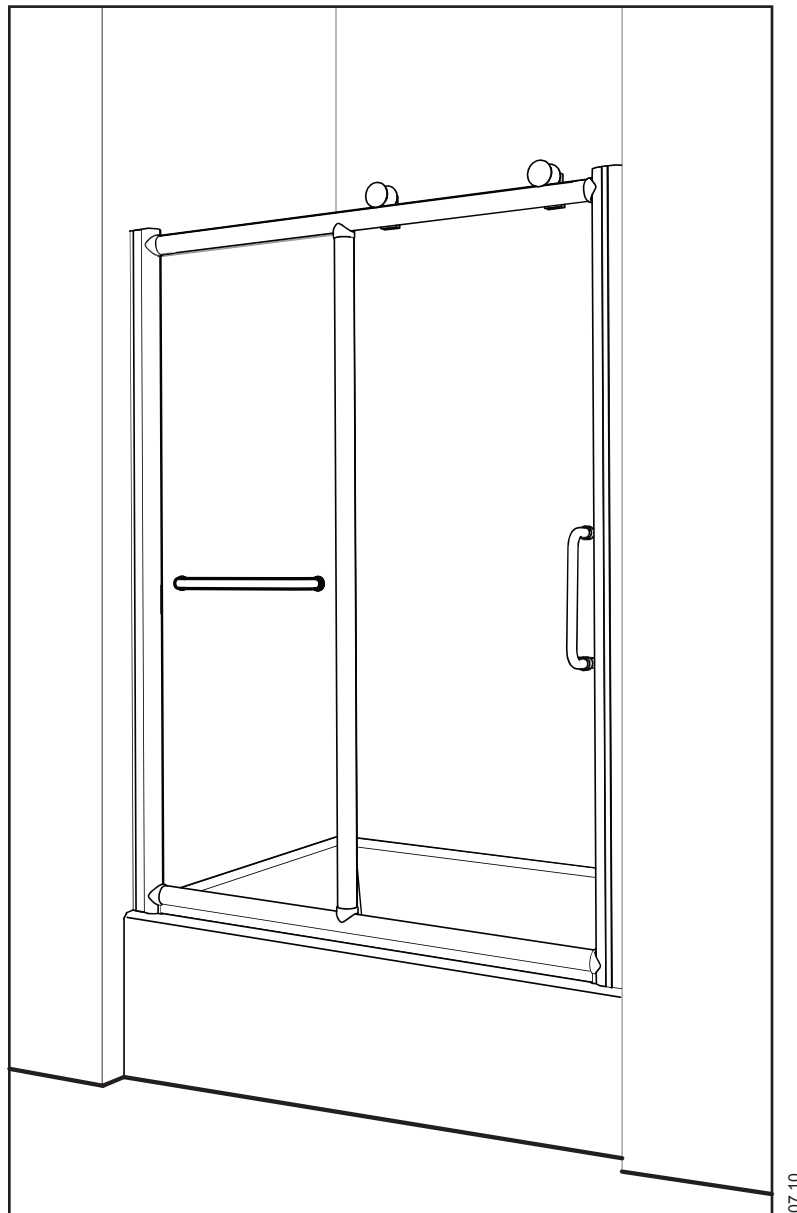


K-NT91Z-60-61

INSTRUCTION MANUAL

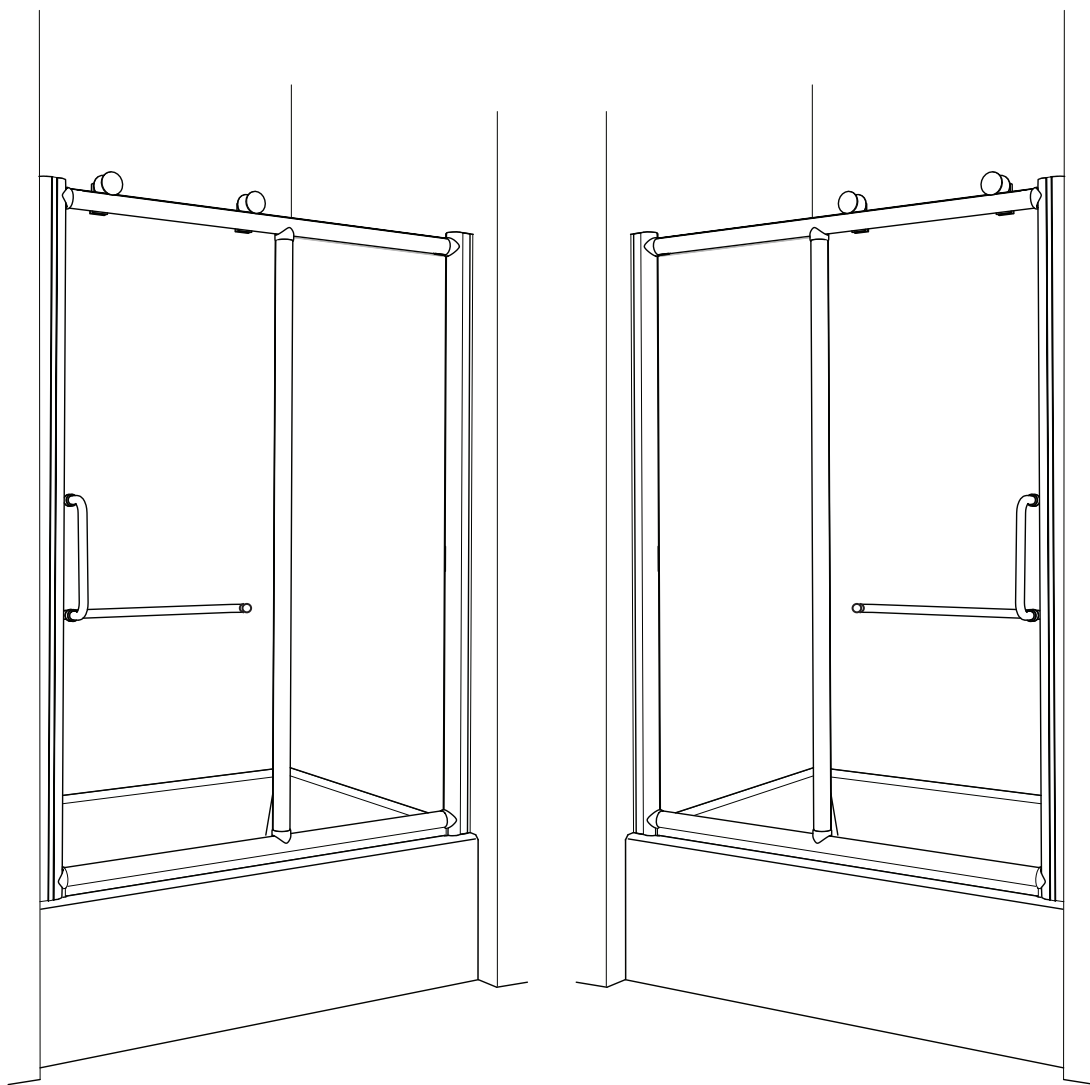
 **ALUMAX**
Kula Collection



Nalu Tub enclosure

Possible configurations

Panel and door



Opening

Min = 57 5/8"

Max = 58 5/8"

Please keep this manual and product code number for future reference and replacement parts ordering if necessary.

GENERAL INSTRUCTIONS

- *Read this manual carefully and completely before proceeding.*
- *It is recommended that you wear safety glasses at all times during the installation.*

INSTALLATION OVER CERAMIC TILES

- *Silicone should be used to seal the gap where the ceramic tiles meet the fixed panel.*
- *If your shower door is to be installed over ceramic tiles, the tiles should lay completely under the wall jamb.*

NOTICE

- *Caulking: no sealant is required inside the shower. Unless otherwise stated.*
- *Some models are equipped with clear sealing gaskets.*

CARE FOR YOUR SHOWER DOOR

- *Never use scouring powder pads or sharp instruments on metal pieces or glass panels. An occasional wiping down with a mild soap diluted in water is all that is needed to keep the panels and aluminum parts looking new.*
- *We recommend wiping the glass panels with a squeegee after each use.*

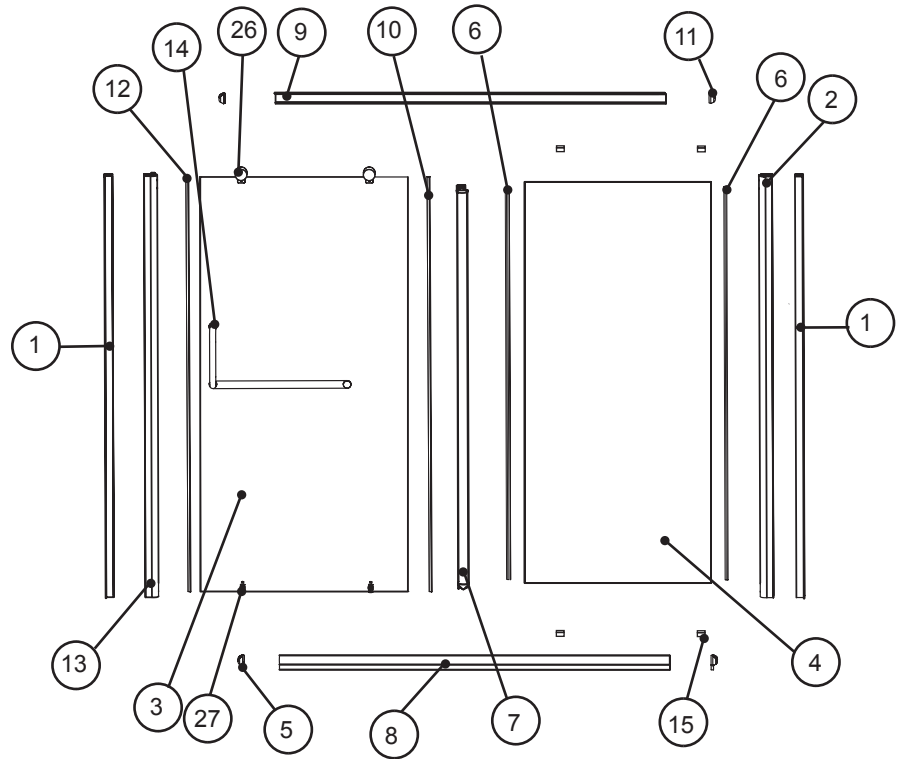
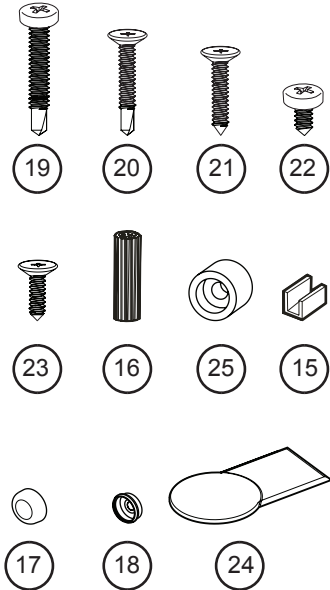
Product specifications are subject to change without notice.

LISTE DES PIÈCES / PARTS LISTING

NOTE
XX RÉFÈRE AU FINI DU PRODUIT
XX REFERS TO THE MATERIAL FINISH

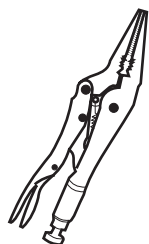
11- Chrome Poli / Bright Chrome
25 - Nickel Brossé / Brushed Nickel

QUINCAILLERIE / HARDWARE



ITEM	PIÈCES - PARTS	QTY
1	JAMBAGE - WALL JAMB	2
2	EXTENSEUR / EXPANDER	1
3	PANNEAU DE PORTE / DOOR PANEL	1
4	PANNEAU FIXE / SIDE PANEL	1
5	CONNECTEUR DU BAS / BOTTOM CONNECTOR	2
6	JOINT VÉRTICAL / VERTICAL GASKET	2
7	MONTANT VÉRTICAL / VERTICAL	1
8	RAIL DU BAS / BOTTOM TRACK	1
9	RAIL DU HAUT / TOP TRACK	1
10	JOINT LATÉRAL / DOOR SIDE GASKET	1
11	CONNECTEUR DU HAUT / TOP CONNECTOR	2
12	JOINT MAGNÉTIQUE / MAGNETIC DOOR GASKET	1
13	EXTENSEUR MAGNÉTIQUE / MAGNETIC EXPANDER	1
14	ENS. DE POIGNÉE - SET OF HANDLES	1
ITEM	QUINCAILLERIE - HARDWARE	QTY
15	SUPPORT DE VERRE / GLASS SUPPORT	4
16	CHEVILLE / WALL PLUG	9
17	CAPUCHON COUVRE-VIS / SCREW CAP	14
18	L' ARRIÈRE DU CAPUCHON COUVRE-VIS / BACK SCREW CAP	14
19	VIS PAN AUTO-PERÇANTE / PAN SELF DRILLING SCREW #M4-35	16
20	VIS À TÊTE PLATE AUTO-PERÇANTE / FLAT HEAD SELF DRILLING SCREW # M4-25	6
21	VIS À TÊTE PLATE / FLAT HEAD SCREW #M4-12	1
22	VIS PAN / PAN CREW #M4-10	6
23	VIS À TÊTE PLATE / FLAT HEAD SCREW #M4-20	2
24	CAPUCHON / COVER	2
25	BOUCHON / STOPPER	1
26	ROULETTE DU HAUT / TOP WHEELS	2
27	ROULETTE DU BAS / BOTTOM WHEELS	2

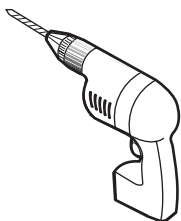
TOOLS AND MATERIAL REQUIRED



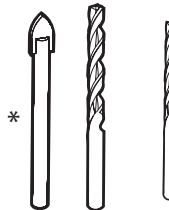
LONG NOSE LOCKING PLIER (2)



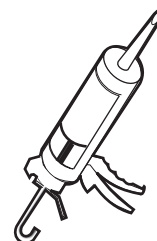
SCREWDRIVERS



DRILL



1/4" & 1/8" DRILL BITS



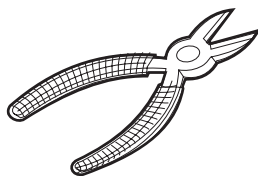
SILICONE



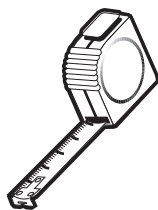
BLOCK



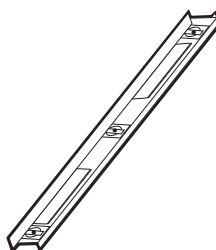
PENCIL



CUTTING PLIER



TAPE MEASURE



LEVEL



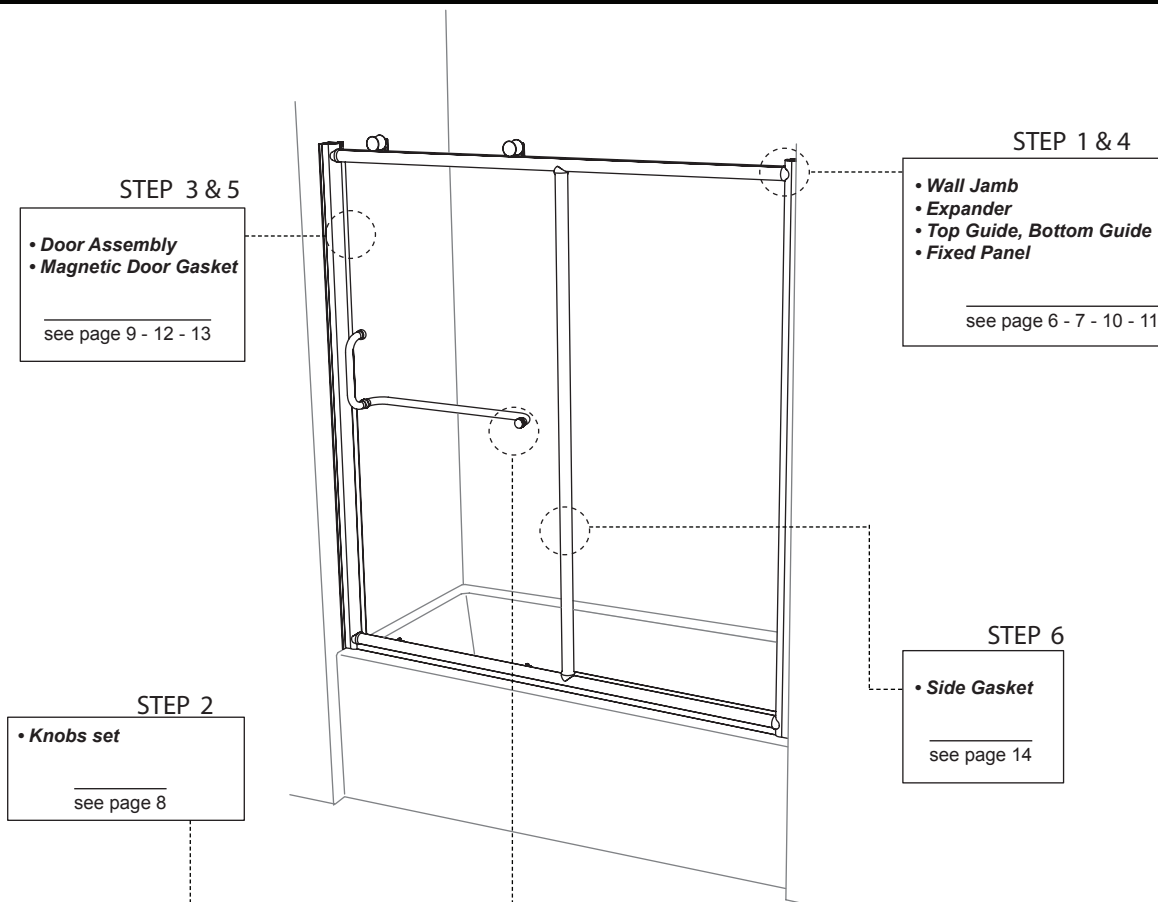
MALLET



5/16" HEX NUT DRIVER

*To install the shower door on ceramic tiles, use a 1/4" drill bit for ceramic tiles.

INSTALLATION OF COMPONENTS



1 POSITIONING OF THE THRESHOLD

1a. Use a measuring tape to mark the center of the threshold of the tub.

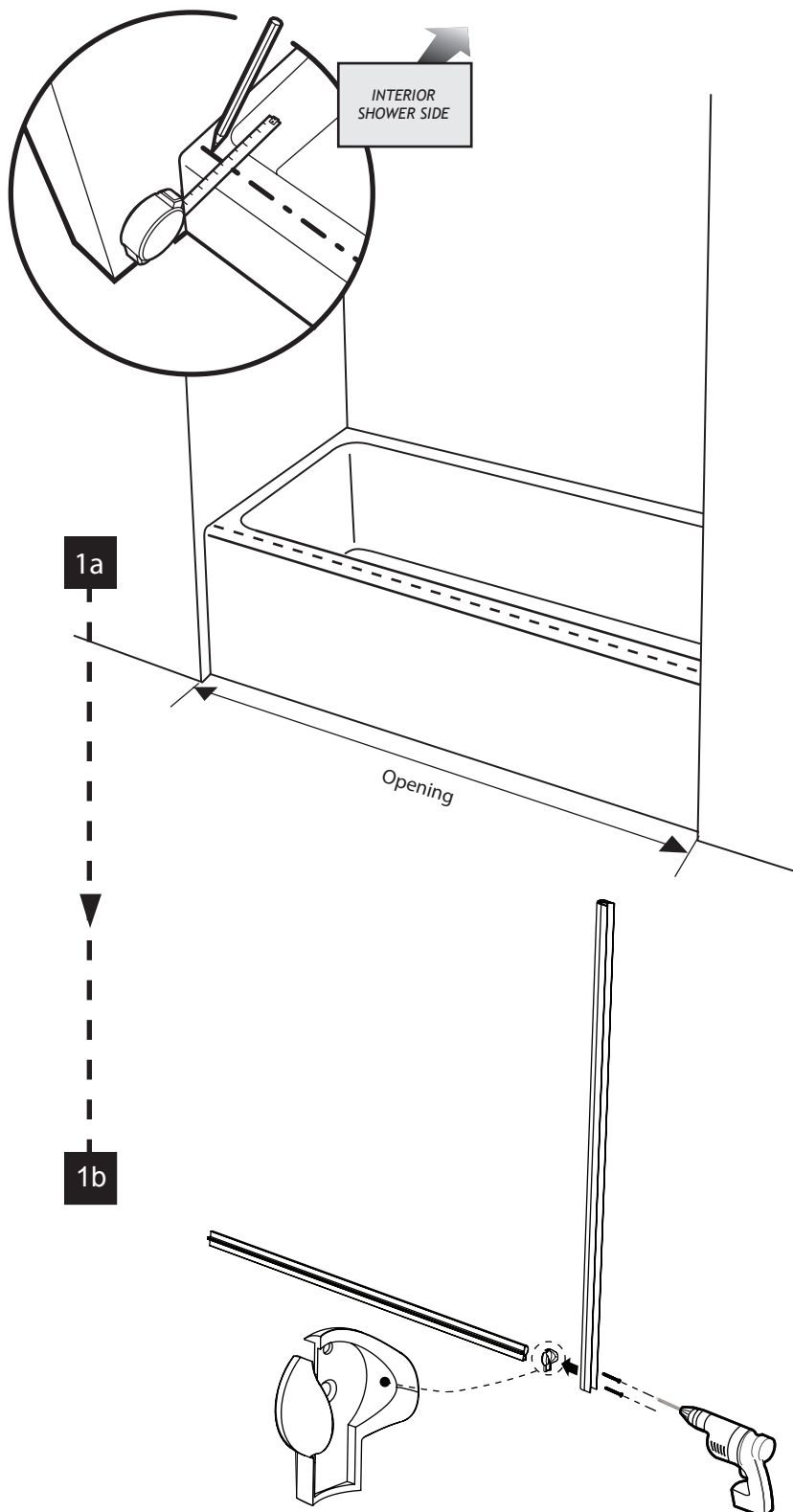
1b. Using 1 3/8" screws (X2), fasten the expander to the bottom track by placing the bottom connector between the bottom track and expander.

1c. Place glass clips (X2) on the bottom edge of the fixed panel and slide it into the expander and bottom track.

1d. Place glass clips (X2) on the top edge of the fixed panel. Fasten the top track using 1 3/8" screws (2) by placing the top connector between the top track and expander.

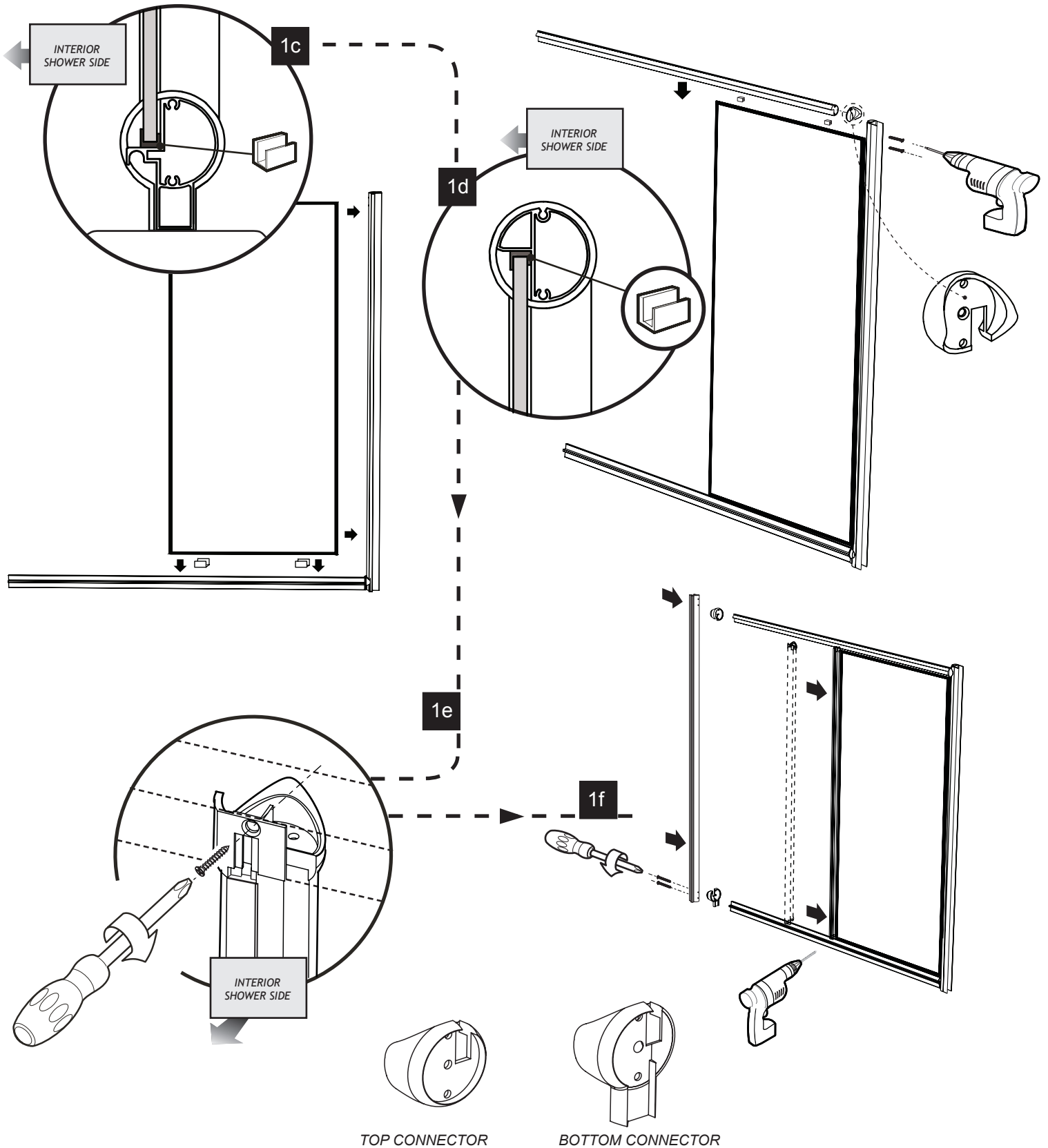
1e. Insert the vertical column onto the fixed panel and screw into the top and bottom track using the 3/4" screws (X2).

1f. Screw the magnetic expander to the top and bottom tracks using the 1 3/8" screws (X4) by placing the two connectors between.



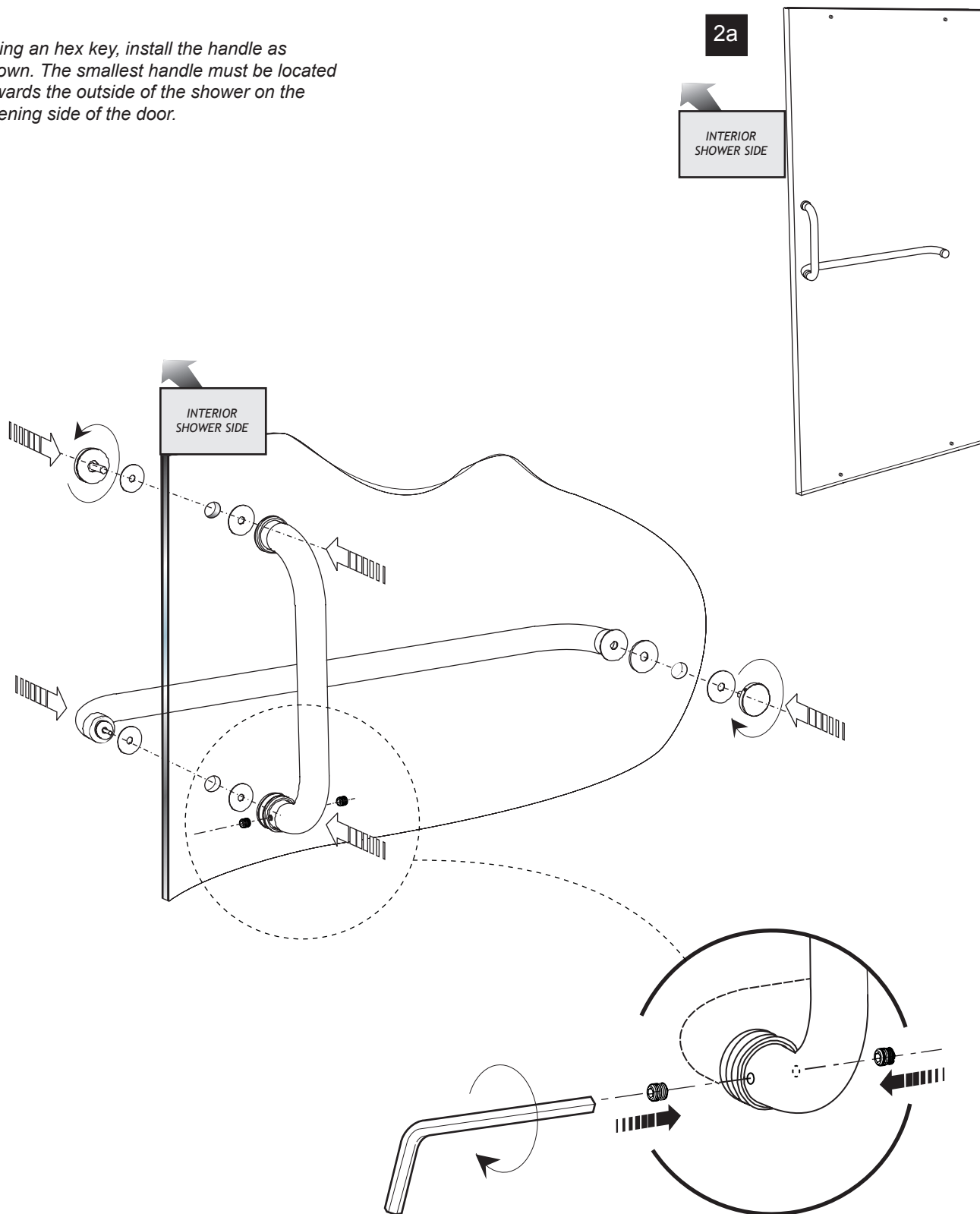
1

FIXED PANEL INSTALLATION



HANDLE INSTALLATION

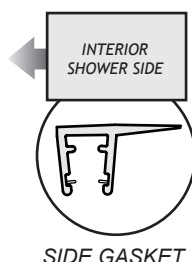
2a. Using an hex key, install the handle as shown. The smallest handle must be located towards the outside of the shower on the opening side of the door.



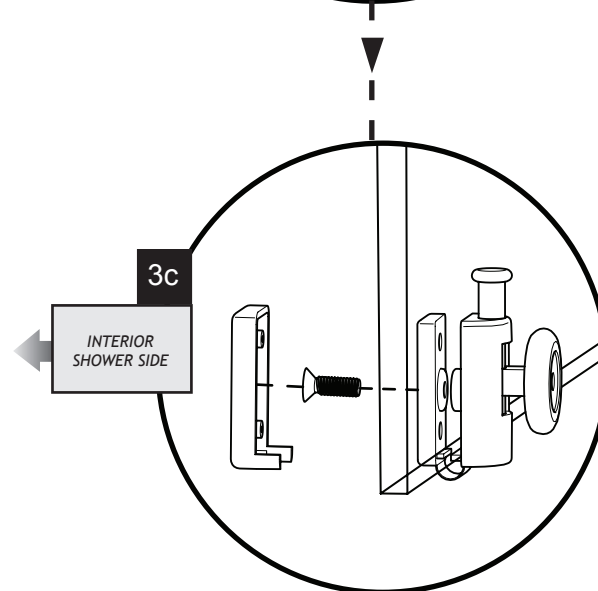
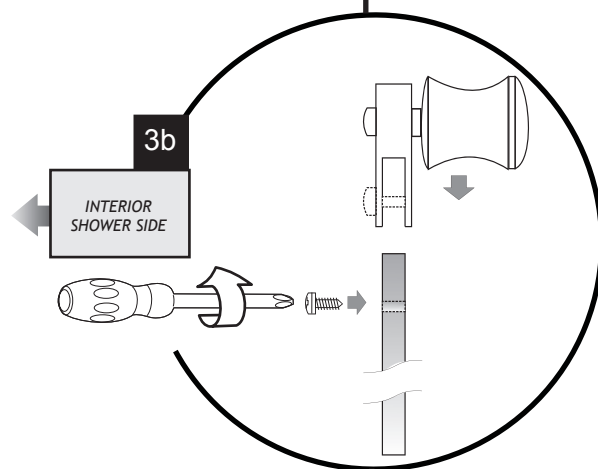
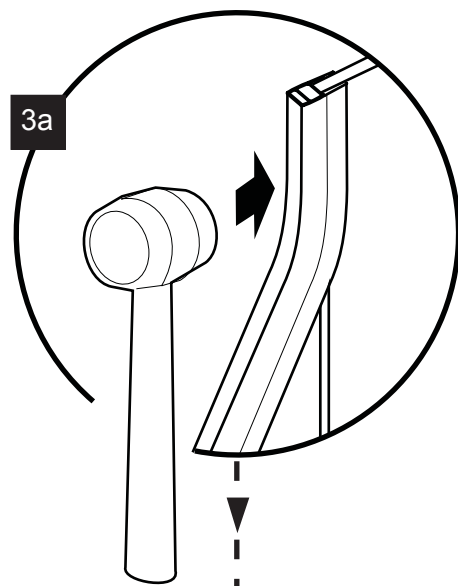
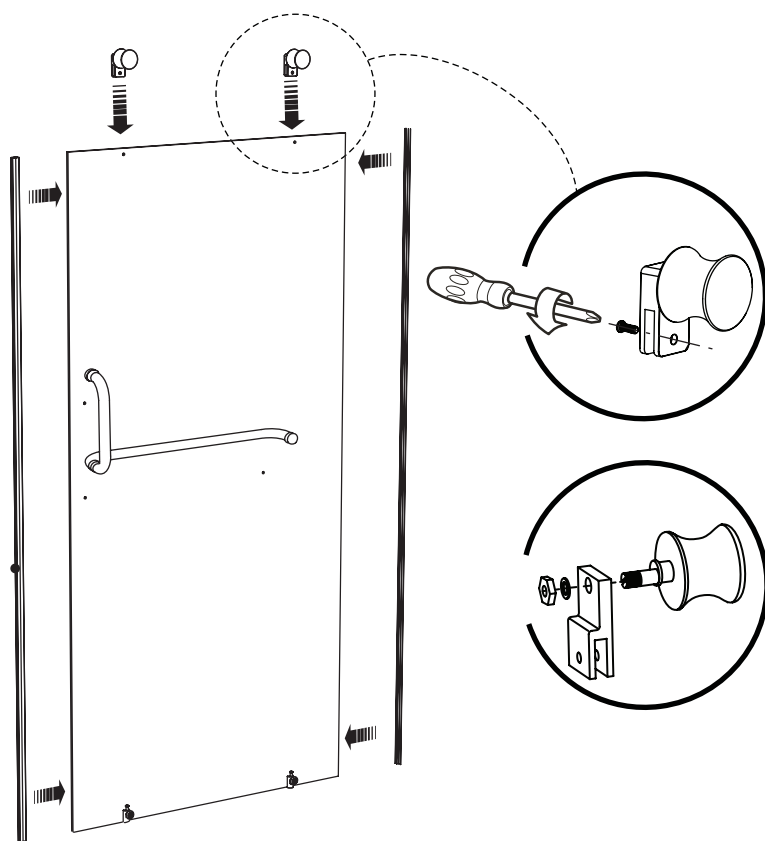
3a. Use a mallet to install the magnetic gasket and the side gasket on the door panel. Ensure the textured side of the glass panel is located towards the outside of the tub.



3b. Install the rollers on the door panel so that the rollers point towards the outside of the tub. The vertical handle must always be located on the opening side of the door towards the outside of the tub.



3c. Install the bottom sliders on the door panel while placing the wheels towards the outside of the tub. Place the bottom slider cap over the screw.



WALL JAMB INSTALLATION

4a. Place the door panel assembly at the bottom of the tub using a piece of cardboard under the door for protection.

4b. Insert the wall jambs into the expander and place the frame in its final position

4c. Level the shower frame. Mark the drilling location of the holes for the wall jamb then remove the frame temporarily.

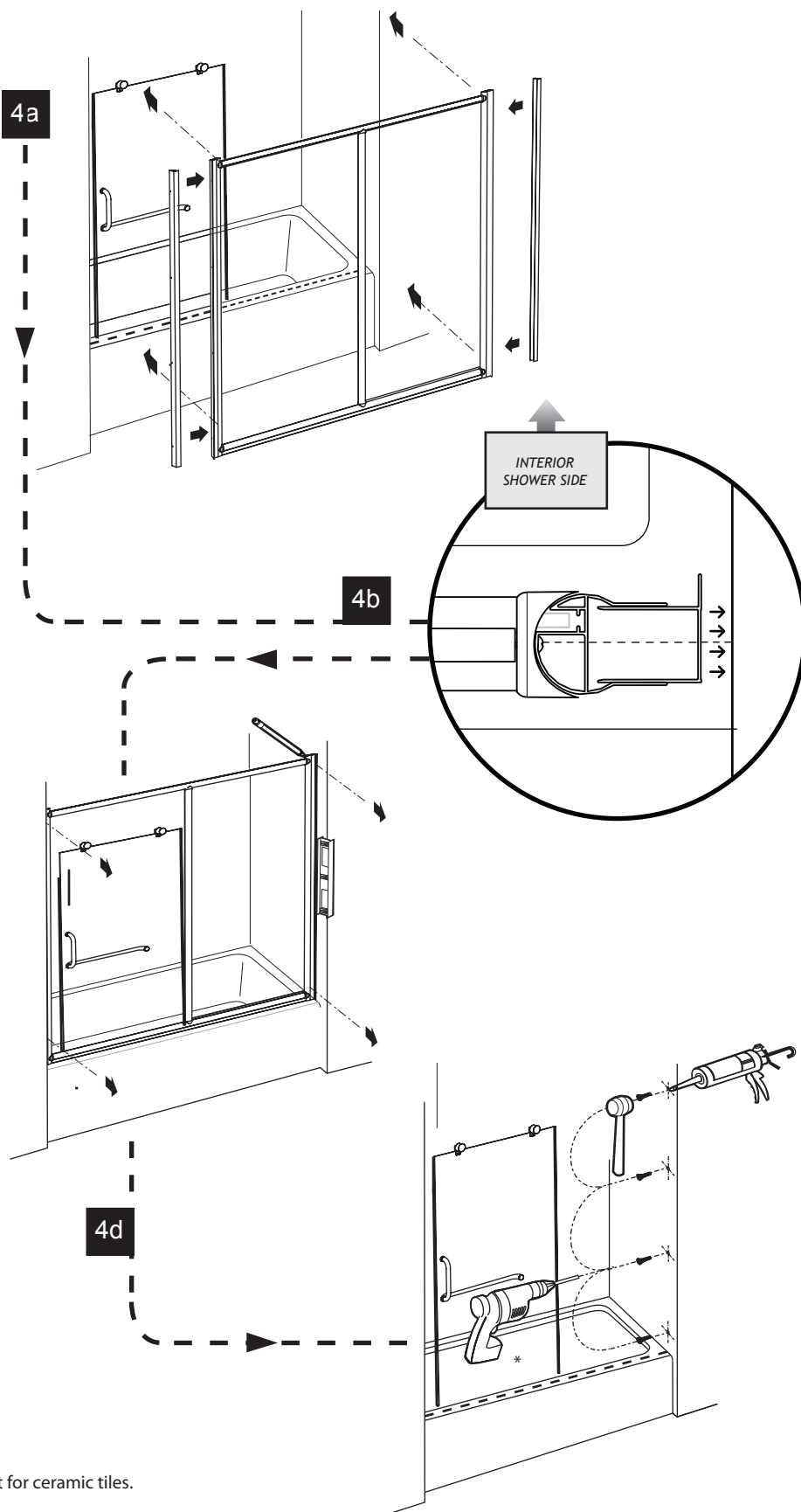
4d. With a 1/4" drill bit*, drill 4 holes into the wall using the marks done in the previous step. Place a drop of silicone in each hole and insert 4 wall plugs. This step must be done on both sides.

4e. Screw only one wall jamb onto the wall. It must be the one where the magnetic expander will be inserted.

4f. Insert the second wall jamb into the expander on the side of the fix panel.

4g. Insert the frame at an angle by placing the magnetic expander into the wall jamb which is fixed on the wall. Slide and center the frame in the opening by stretching the second wall jamb to the wall.

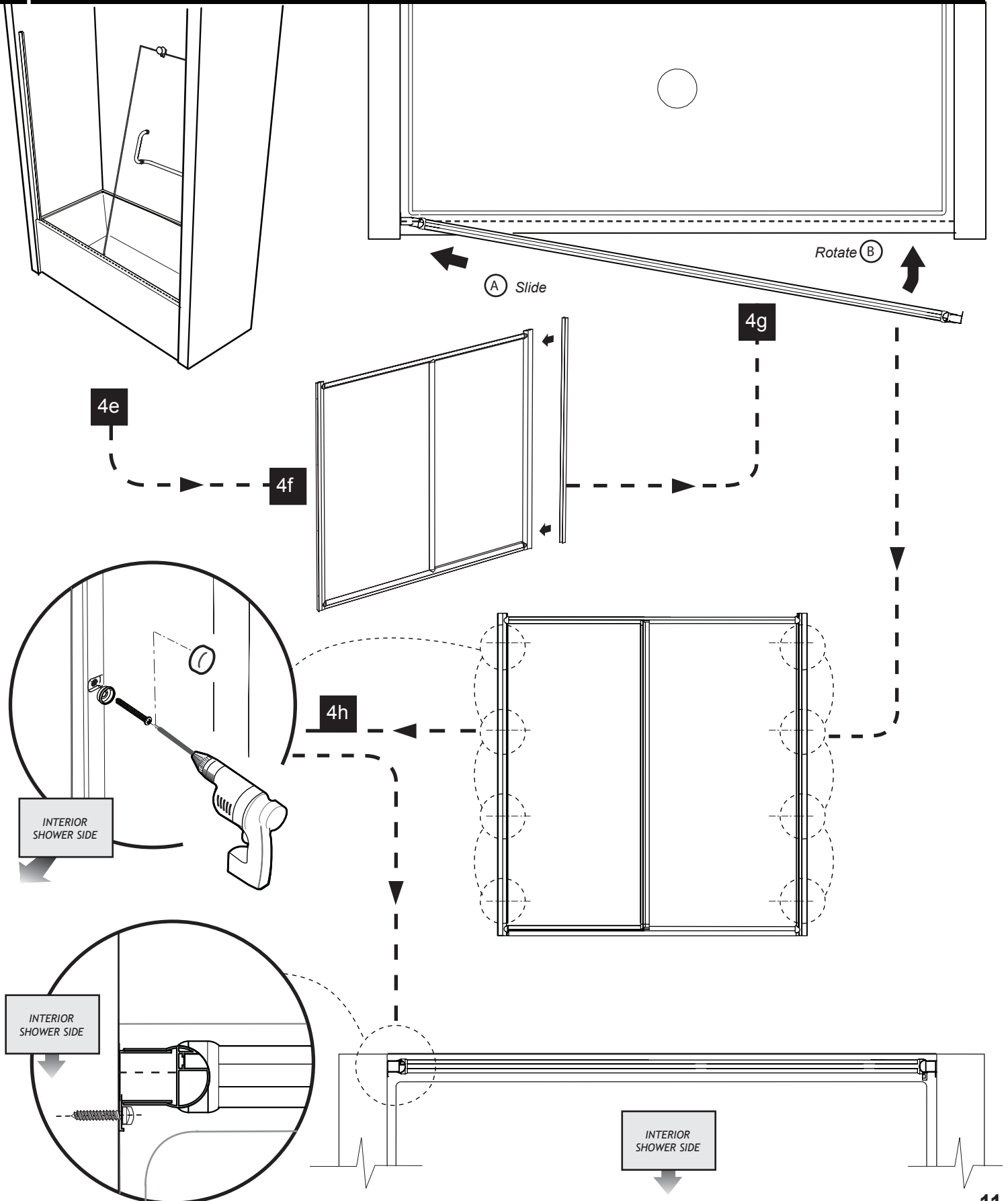
4h. Screw the second wall jamb onto the wall by using 1 1/4" screws (3). The wall plugs should already be installed in the wall. Install the screw caps (3).



*To install the shower door on ceramic tiles, use a 1/4" drill bit for ceramic tiles.

4

WALL JAMB INSTALLATION

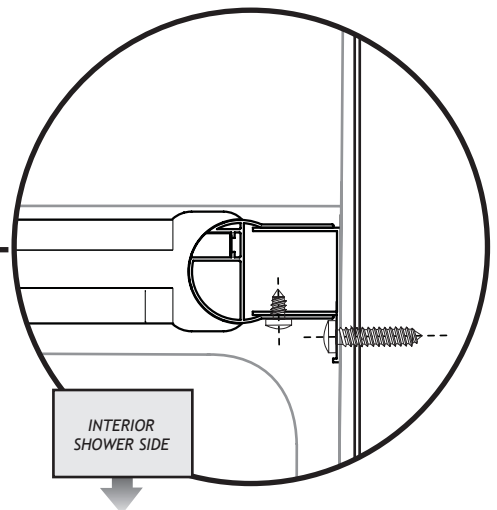
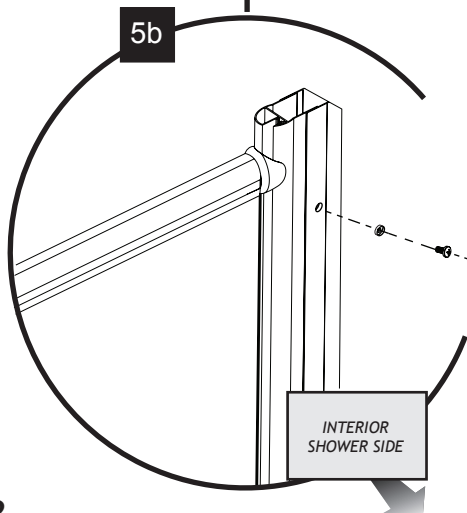
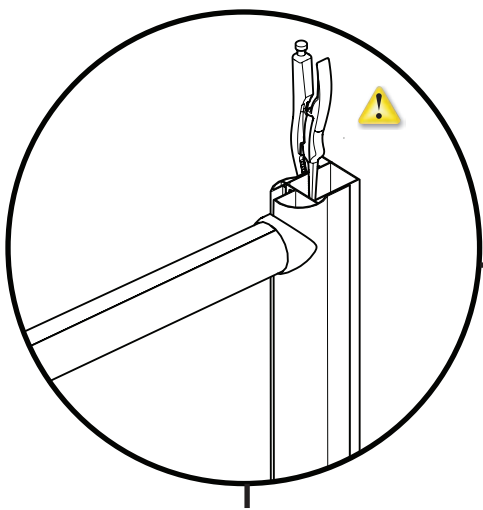
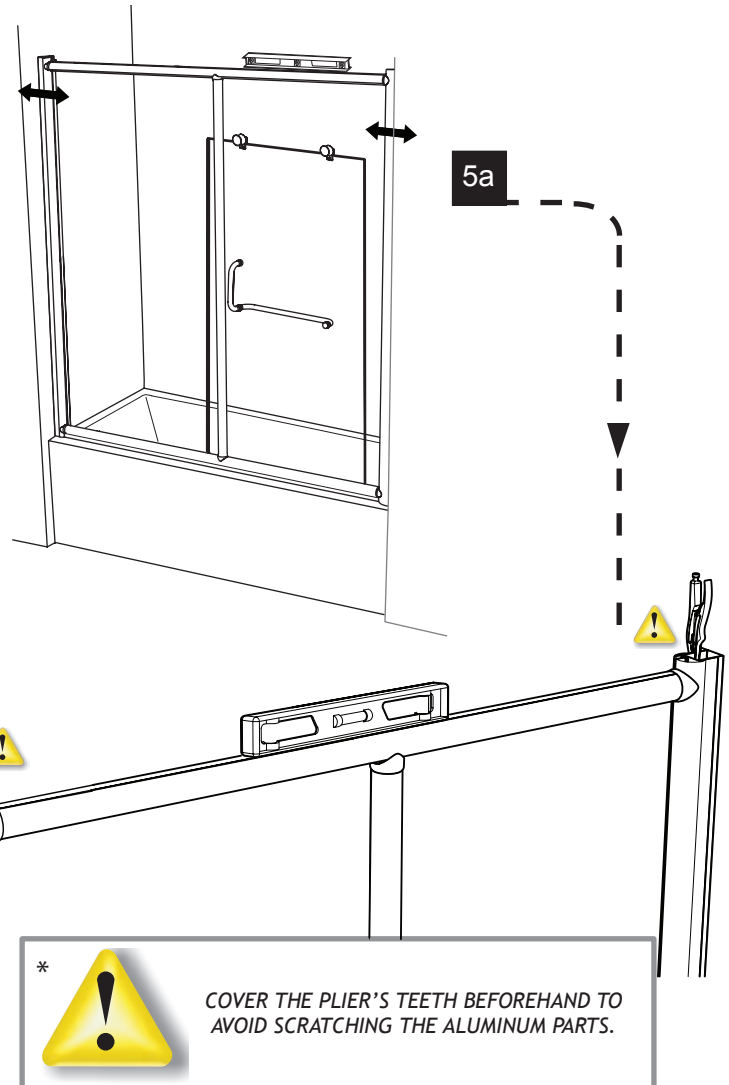


5

SECURE THE WALL JAMBS

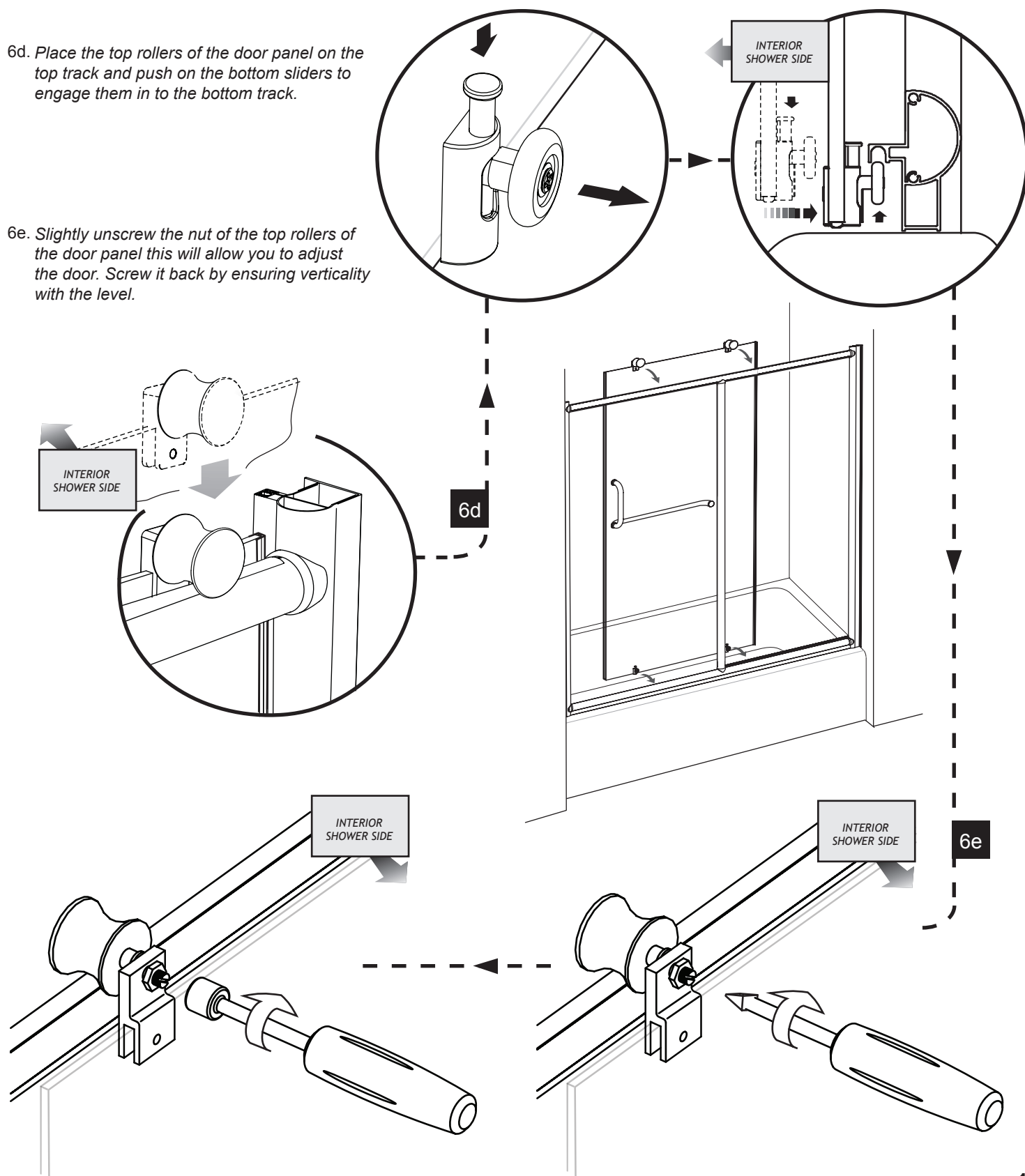
5a. Level the top track and bottom track, by using locking pliers. Clamp the expanders with their wall jambs.*

5b. Secure the expanders with the wall jambs by using the 3/8" self drilling screws (6) and screw caps (6).



6d. Place the top rollers of the door panel on the top track and push on the bottom sliders to engage them in to the bottom track.

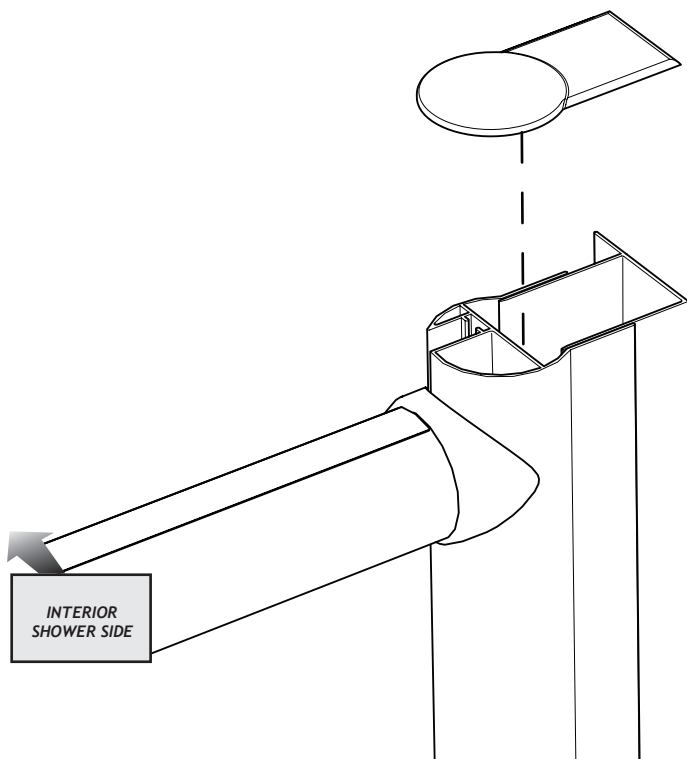
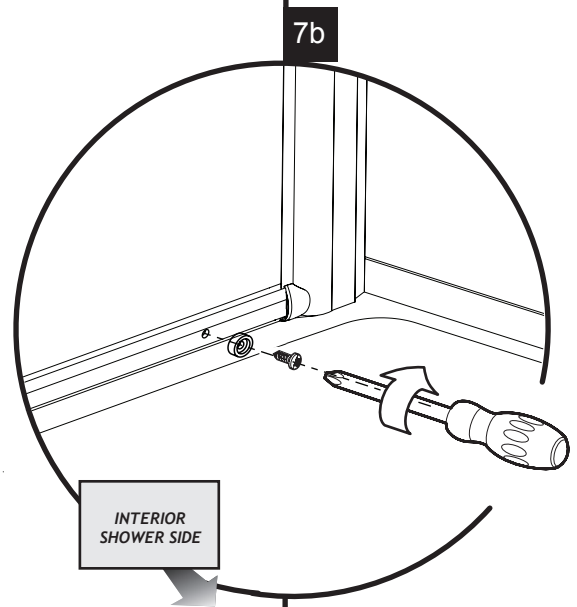
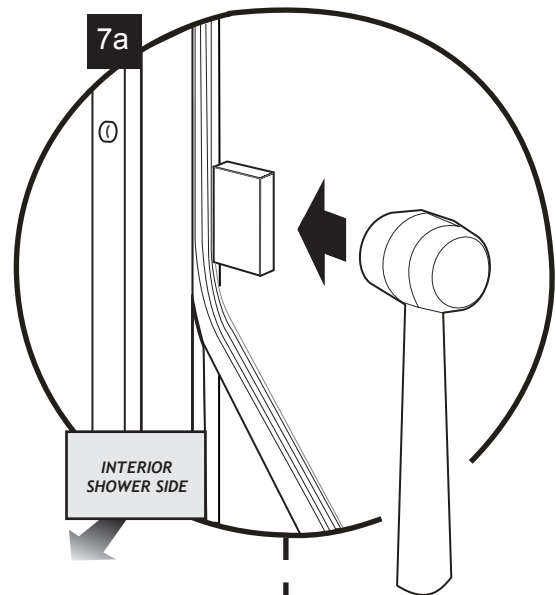
6e. Slightly unscrew the nut of the top rollers of the door panel this will allow you to adjust the door. Screw it back by ensuring verticality with the level.



7a. Using a mallet and block install the two vertical gaskets. One between the expander and fix panel, the second between the vertical column and fix panel. The gasket must be installed inside the tub enclosure.

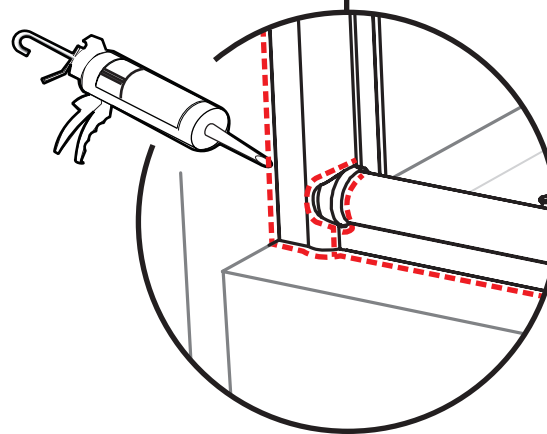
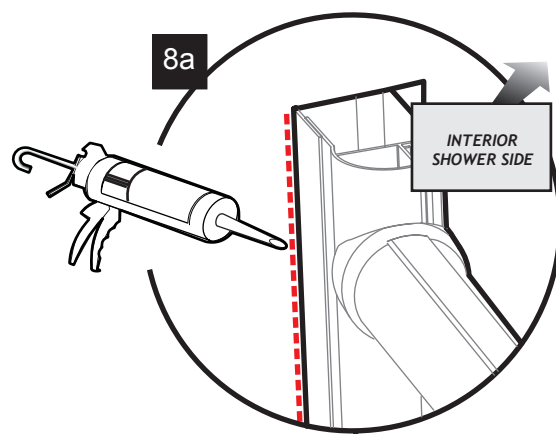
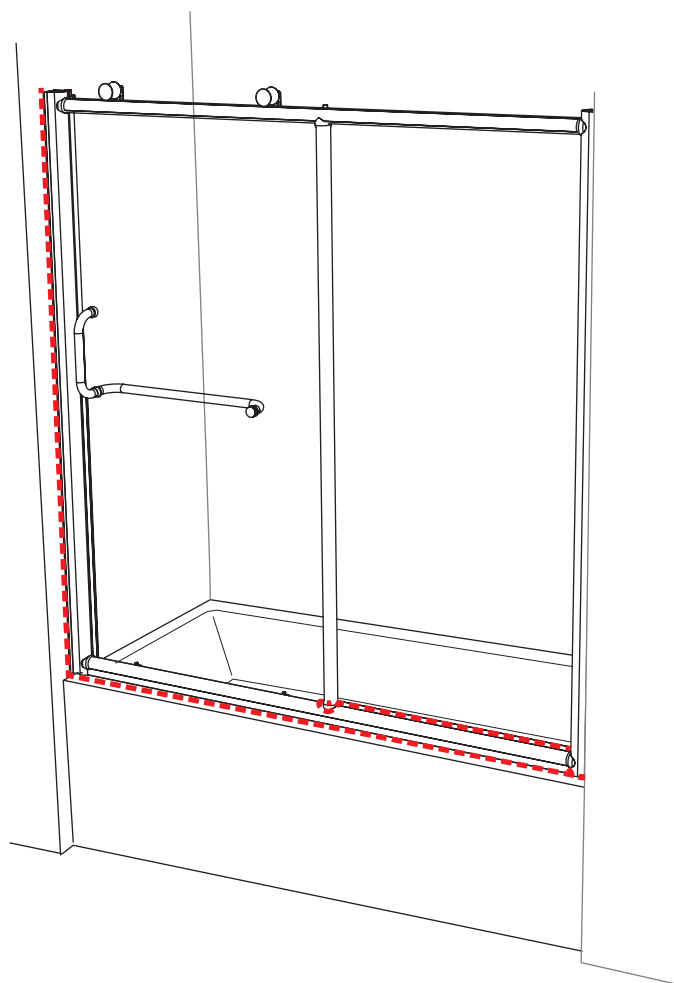
7b. The bumper is located on the bottom track opposite the opening of the door.

7c. Place the expander caps on the expanders.



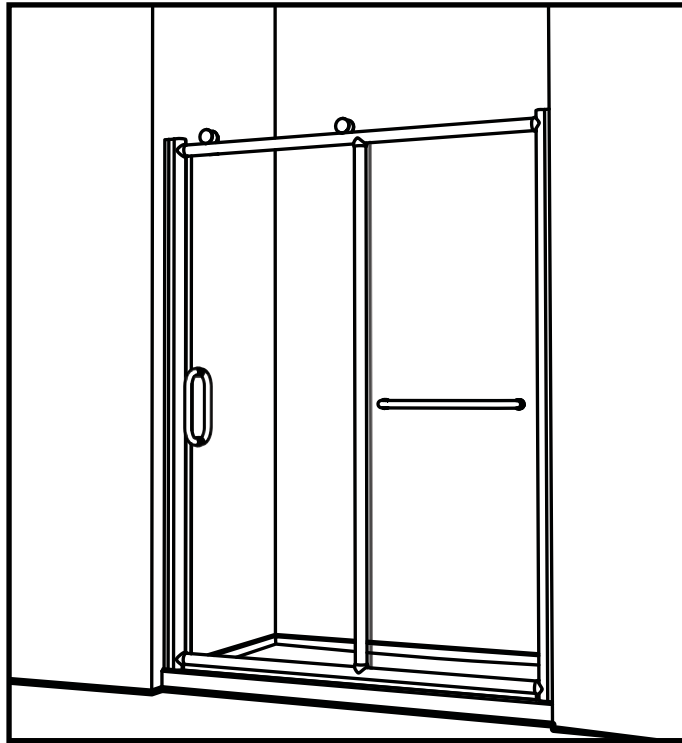
8a. Silicone the outside of the frame between the wall and the wall jamb, along the bottom rail, below the fix panel and at the bottom of the return panel if applicable.

8b. Wait 24 hours before using the shower to dry the silicon.

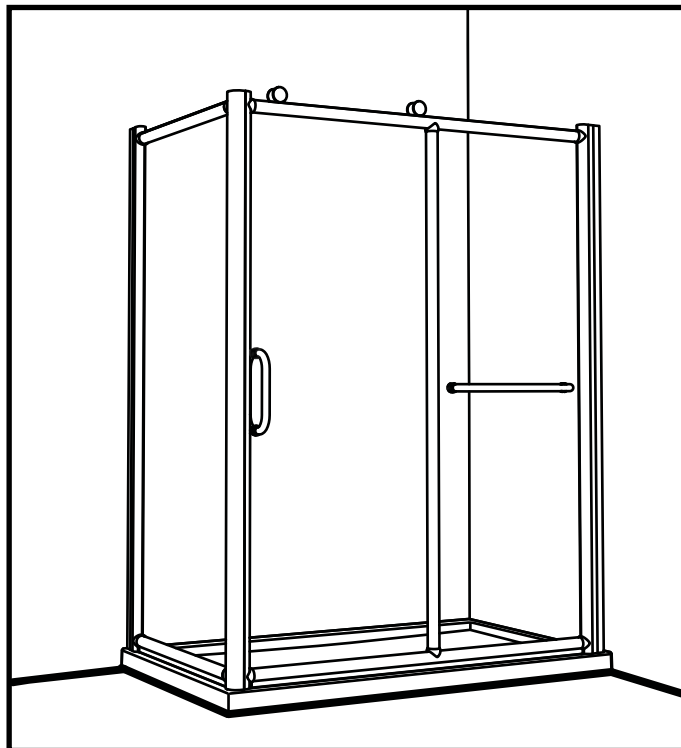


K-NS91Z and K-NS93Z
INSTRUCTION MANUAL

 **ALUMAX**
Kula Collection



Nalu Panel and door

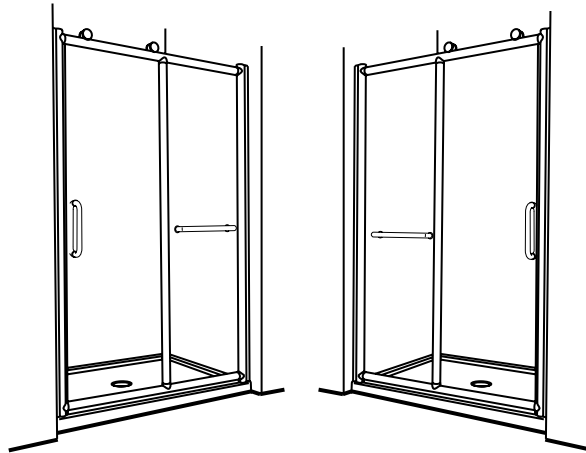


Nalu Panel and door with return panel

Possible configurations

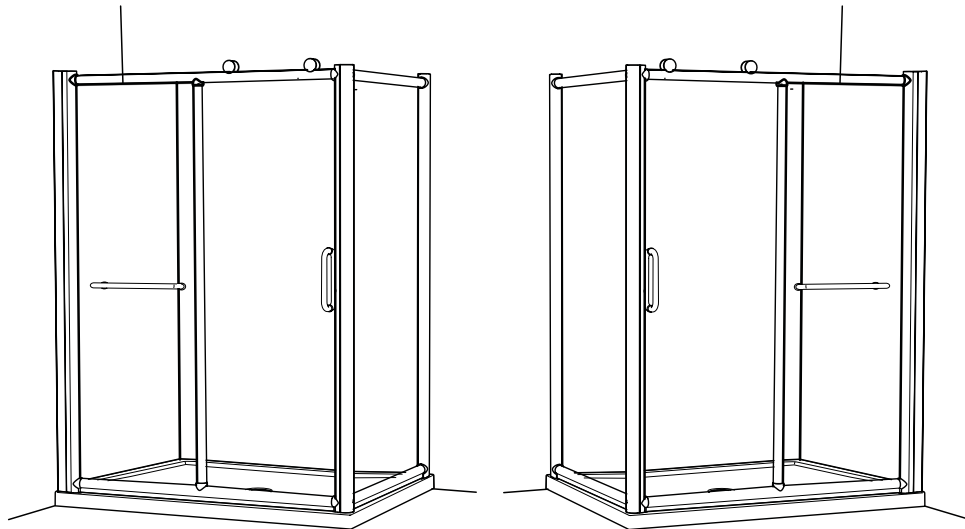
Follow the installation steps require for the model

Panel and door shower enclosure



<i>Model</i>	<i>Opening adjustment (min / max)</i>
K-NS91Z-48	min: 46" / max: 47 1/4 "
K-NS91Z-60	min: 58 " / max: 59 1/4"
K-NS91Z-72	min: 79 " / max: 71 1/4"

Panel and door with return panel



<i>Model</i>	<i>Opening adjustment (min / max)</i>	<i>Return panel adjustment (min / max)</i>
K-NS93Z-4836	min: 45 5/16" / max: 46"	min: 33 5/16" / max: 34"
K-NS93Z-6036	min: 57 5/16" / max: 58"	min: 33 5/16" / max: 34"
K-NS93Z-6042	min: 57 5/16" / max: 58"	min: 40 1/8" / max: 40 13/16"
K-NS93Z-6048	min: 57 5/16" / max: 58"	min: 46 1/8" / max: 46 13/16"
K-NS93Z-7236	min: 69 5/16" / max: 70"	min: 33 5/16" / max: 34"

Please keep this manual and product code number for future reference and replacement parts ordering if necessary.

GENERAL INSTRUCTIONS

- *Read this manual carefully and completely before proceeding.*
- *It is recommended that you wear safety glasses at all times during the installation.*

INSTALLATION OVER CERAMIC TILES

- *Silicone should be used to seal the gap where the ceramic tiles meet the fixed panel.*
- *If your shower door is to be installed over ceramic tiles, the tiles should lay completely under the wall jamb.*

NOTICE

- *Caulking: no sealant is required inside the shower. Unless otherwise stated.*
- *Some models are equipped with clear sealing gaskets.*

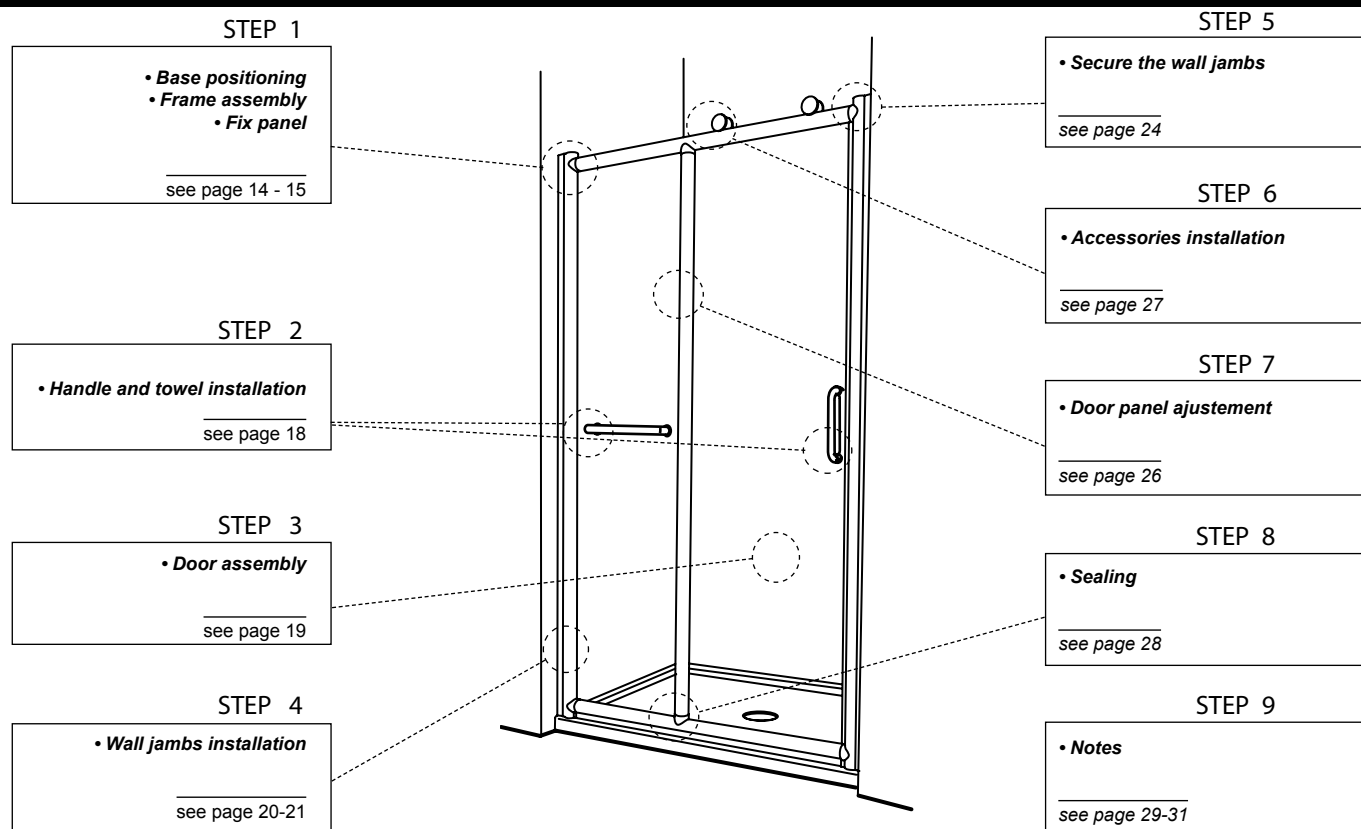
CARE FOR YOUR SHOWER DOOR

- *Never use scouring powder pads or sharp instruments on metal pieces or glass panels. An occasional wiping down with a mild soap diluted in water is all that is needed to keep the panels and aluminum parts looking new.*
- *We recommend wiping the glass panels with a squeegee after each use.*

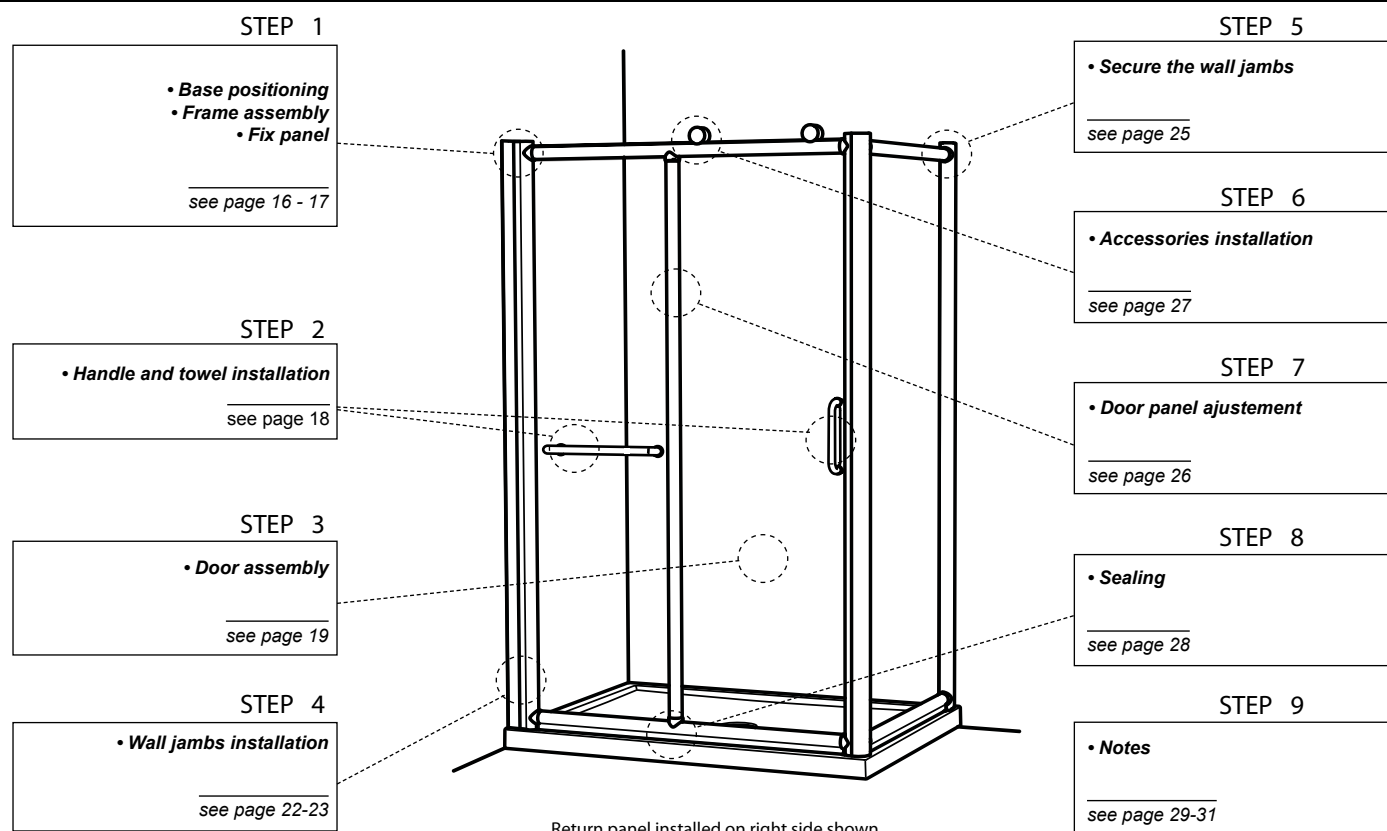
Product specifications are subject to change without notice.

INSTALLATION OF COMPONENTS

K-NS91Z-48-75 | K-NS91Z-60-75 | K-NS91Z-72-75

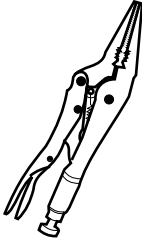


K-NS93Z-4836-75 | K-NS93Z-6036-75 | K-NS93Z-6042-75 | K-NS93Z-6048-75 | K-NS93Z-7236-75



Return panel installed on right side shown

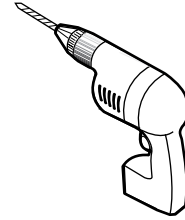
TOOLS AND MATERIAL REQUIRED



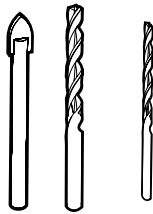
LONG NOSE LOCKING PLIER (X2)



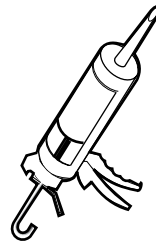
SCREWDRIVERS



DRILL



1/4" & 1/8" DRILL BITS



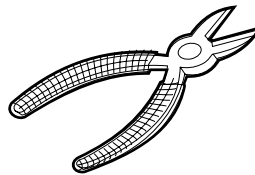
SILICONE



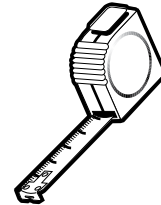
BLOCK



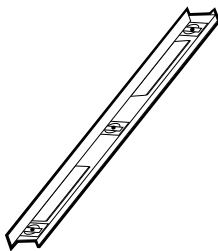
PENCIL



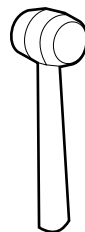
CUTTING PLIER



TAPE MEASURE



LEVEL



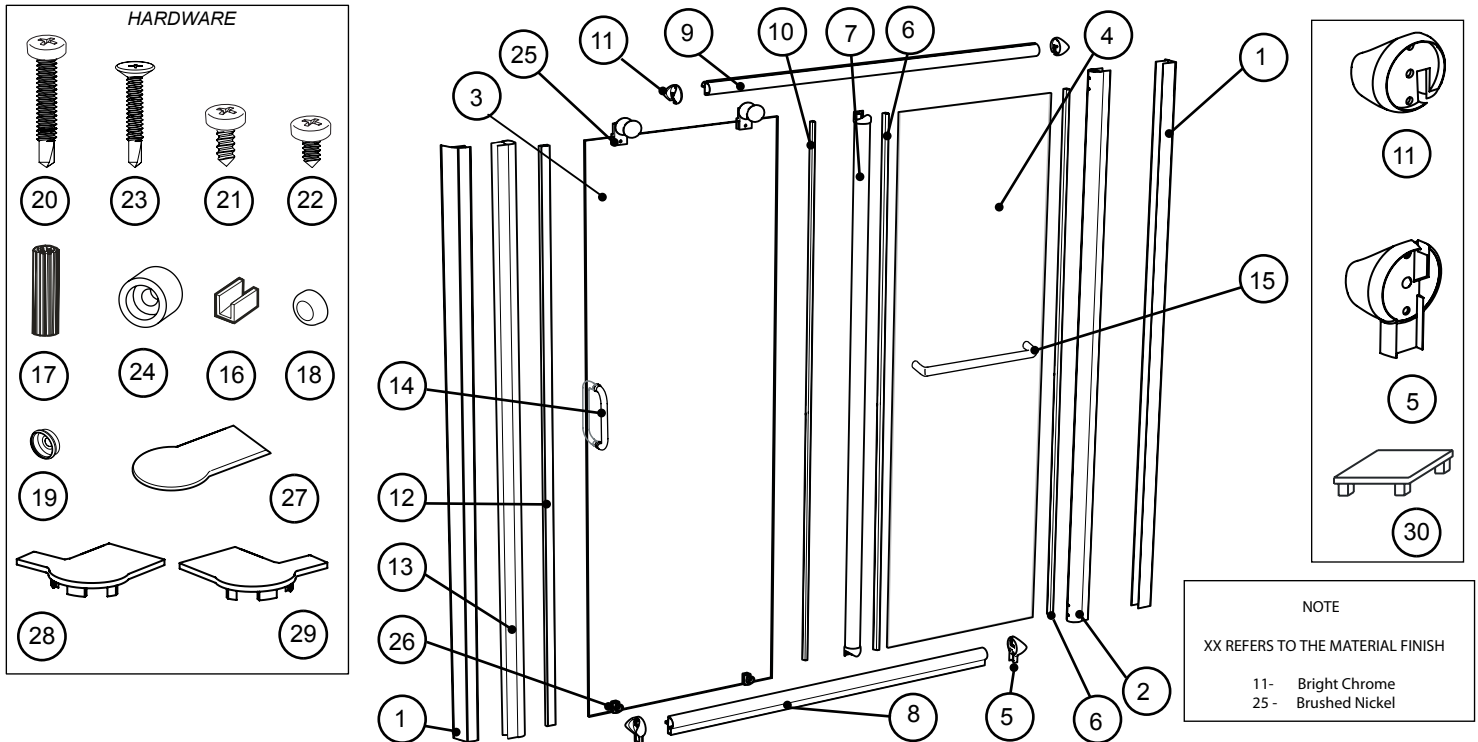
MALLET



5/16" HEX NUT DRIVER

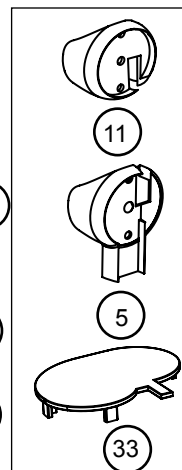
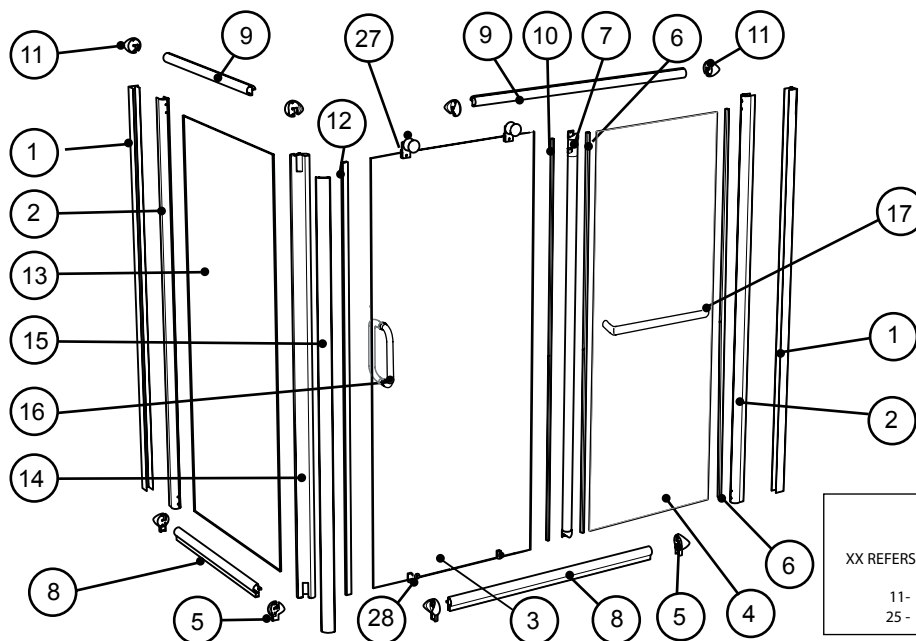
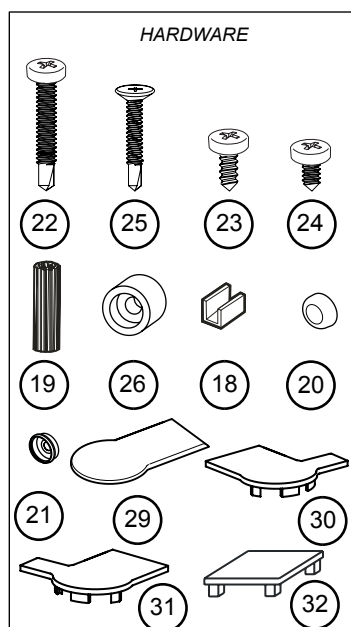
* To install the shower door on ceramic tiles, use a 1/4" drill bit for ceramic tiles.

PARTS LISTING



ITEM	PARTS	QTY
1	WALL JAMB	2
2	EXPANDER	1
3	DOOR PANEL	1
4	SIDE PANEL	1
5	BOTTOM CONNECTOR	2
6	VERTICAL GASKET	2
7	VERTICAL	1
8	BOTTOM TRACK	1
9	TOP TRACK	1
10	DOOR SIDE GASKET	1
11	TOP CONNECTOR	2
12	MAGNETIC DOOR GASKET	1
13	MAGNETIC EXPANDER	1
14	SET OF HANDLES	1
15	TOWEL BAR	1
ITEM	HARDWARE	QTY
16	GLASS SUPPORT	4
17	WALL PLUG	8
18	SCREW CAP	16
19	BACK SCREW CAP	16
20	PAN SELF DRILLING SCREW #M4-35	16
21	PAN HEAD SCREW #M4-12	1
22	PAN CREW #M4-10	8
23	FLAT HEAD SCREW #M4-20	2
24	STOPPER	1
25	TOP WHEELS	2
26	BOTTOM WHEELS	2
27	COVER FOR THE EXPANDER	1
28 / 29	COVER FOR THE MAGNETIC EXPANDER	1
30	COVER FOR THE WALL JAMB	2

PARTS LISTING



NOTE
XX REFERS TO THE MATERIAL FINISH
11- Bright Chrome
25- Brushed Nickel

ITEM	PARTS	QTY
1	WALL JAMB	2
2	EXPANDER	2
3	DOOR PANEL	1
4	SIDE PANEL	1
5	BOTTOM CONNECTOR	4
6	VERTICAL GASKET	4
7	VERTICAL	1
8	BOTTOM TRACK	1
9	TOP TRACK	1
10	DOOR SIDE GASKET	1
11	TOP CONNECTOR	4
12	MAGNETIC DOOR GASKET	1
13	RETURN PANEL	1
14	CORNER MAGNETIC EXPANDER	1
15	CORNER MAGNETIC EXPANDER COVER	1
16	SET OF HANDLES	1
17	TOWEL BAR	1
ITEM	QUINCAILLERIE - HARDWARE	QTY
18	GLASS SUPPORT	8
19	WALL PLUG	8
20	SCREW CAP	16
21	BACK SCREW CAP	16
22	PAN SELF DRILLING SCREW #M4-35	24
23	PAN HEAD SCREW #M4-12	1
24	PAN CREW #M4-10	8
25	FLAT HEAD SCREW #M4-20	2
26	STOPPER	1
27	TOP WHEELS	2
28	BOTTOM WHEELS	2
29	COVER FOR THE EXPANDER	2
30 / 31	COVER FOR THE MAGNETIC EXPANDER	2
32	COVER FOR THE WALL JAMB	2
33	COVER FOR THE CORNER WALL JAMB	2

1 POSITIONING ON THE THRESHOLD

Model	Opening adjustment (min / max)
K-NS91Z-48	min: 46" / max: 47 1/4"
K-NS91Z-60	min: 58" / max: 59 1/4"
K-NS91Z-72	min: 70" / max: 71 1/4"

*Tolerance on dimensions $\pm 1/8"$ (3mm)

1a. Use a measuring tape to mark the center of the threshold of the base.

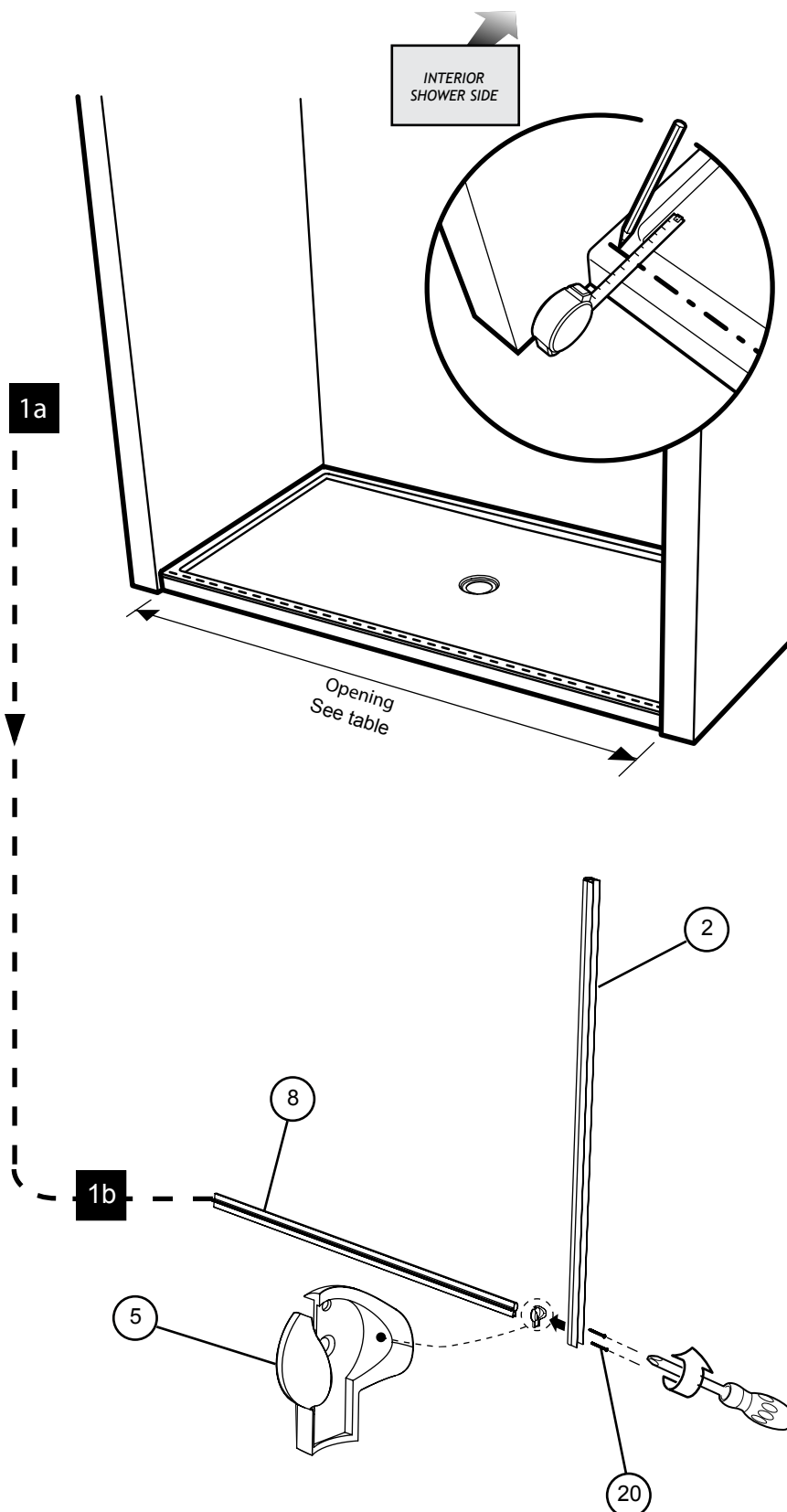
1b. Using 1 3/8" screws (2), fasten the expander to the bottom track by placing the bottom connector between the bottom track and expander.

1c. Place glass clips (2) on the bottom edge of the fixed panel and slide it into the expander and bottom track.

1d. Place glass clips (2) on the top edge of the fix panel. Fasten the top track using 1 3/8" screws (2) by placing the top connector between the top track and expander.

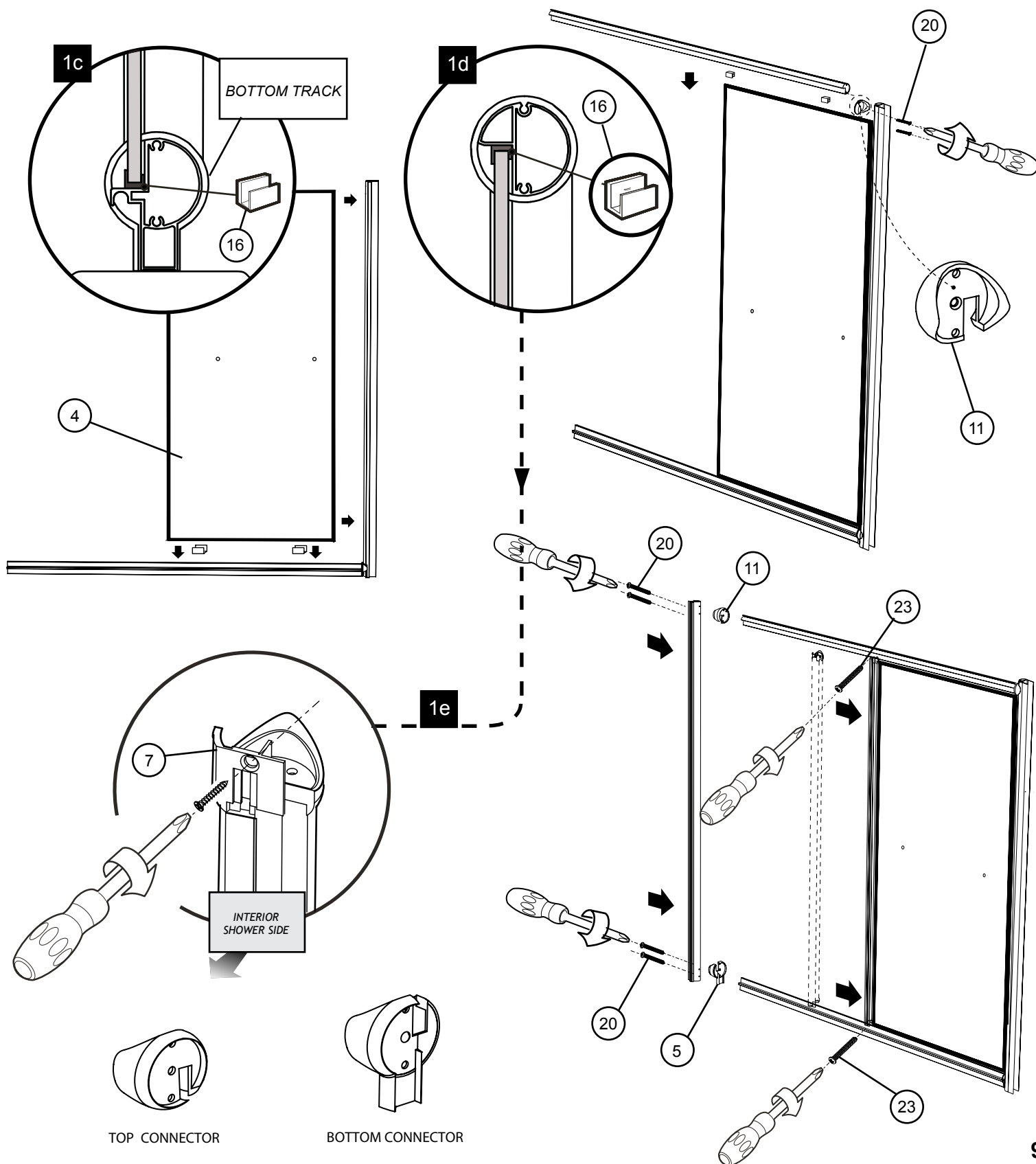
1e. Insert the vertical column onto the fixed panel and screw into the top and bottom track using the 3/4" screws (2).

1f. Screw the magnetic expander to the top and bottom tracks using the 1 3/8" screws (4) by placing the two connectors in between.



K-NS91Z

1 FIXED PANEL INSTALLATION



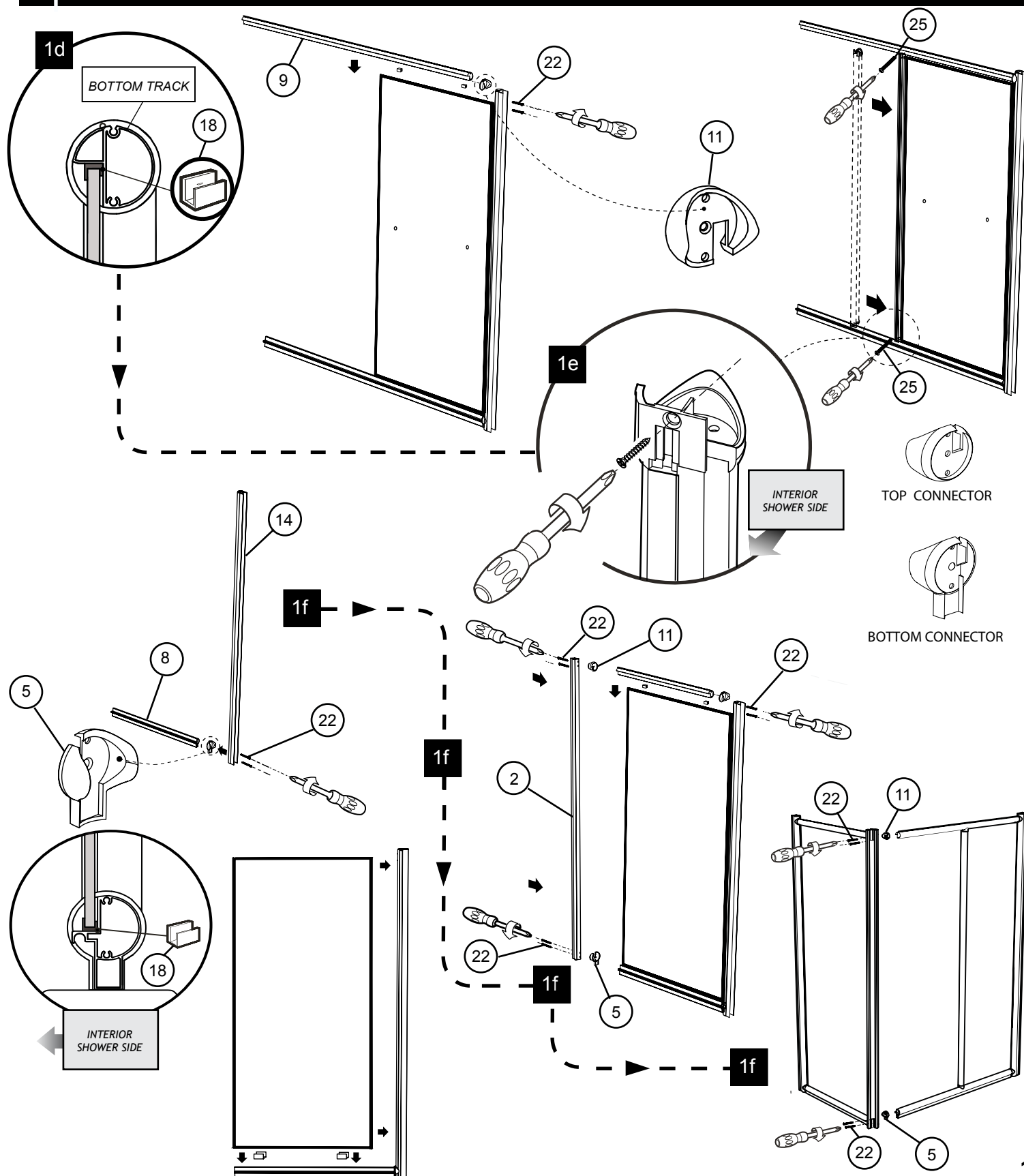
1

-

<i>Model</i>	<i>Opening adjustment (min / max)</i>	<i>Return panel adjustment (min / max)</i>
K-NS93Z-4836	min: 45 5/16" / max: 46"	min: 33 5/16" / max: 34"
K-NS93Z-6036	min: 57 5/16" / max: 58"	min: 33 5/16" / max: 34"
K-NS93Z-6042	min: 57 5/16" / max: 58"	min: 40 1/8" / max: 40 13/16"
K-NS93Z-6048	min: 57 5/16" / max: 58"	min: 46 1/8" / max: 46 13/16"
K-NS93Z-7236	min: 69 5/16" / max: 70"	min: 33 5/16" / max: 34"

K-NS93Z

1 FIXED & RETURN PANEL ASSEMBLY



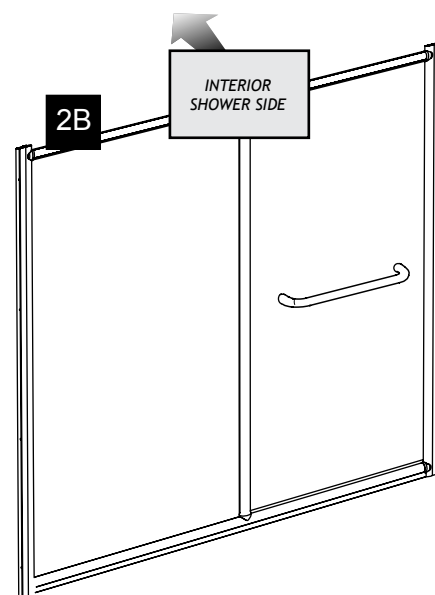
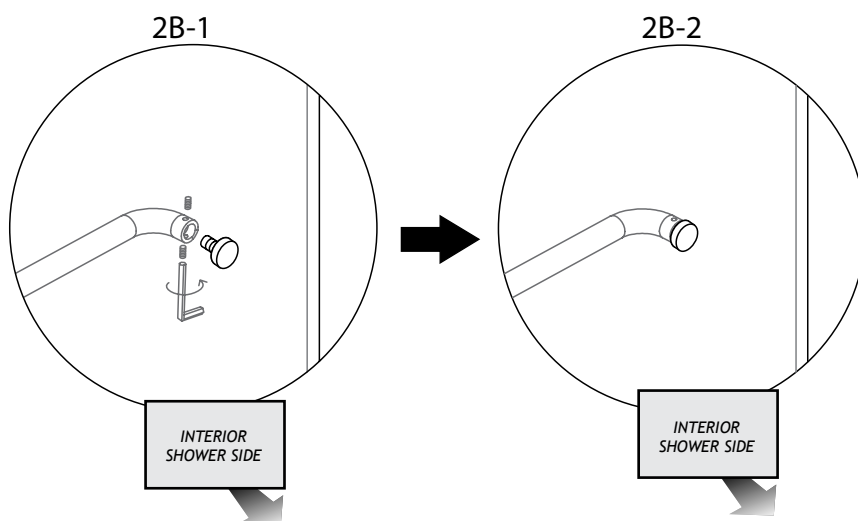
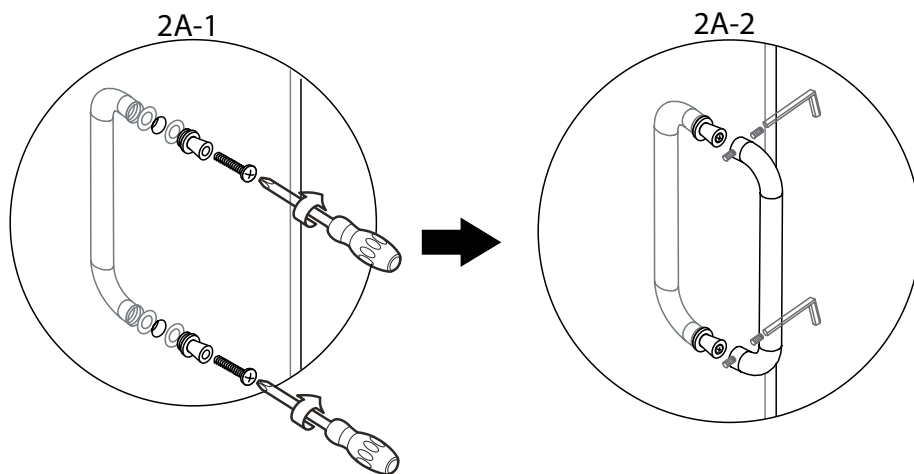
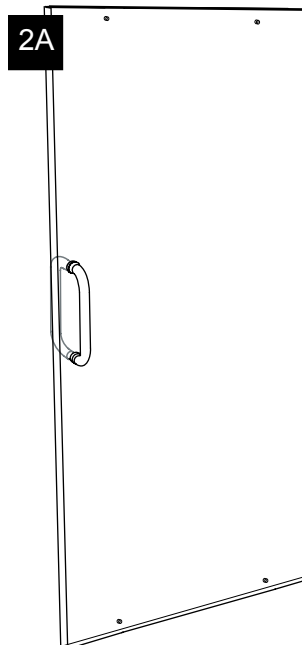
K-NS91Z, K-NS93Z

2

HANDLE INSTALLATION

2a. Install the handle as shown.

2b. Using an hex key to install the towel barr as shown.

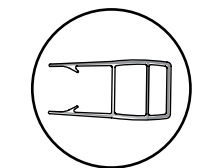


K-NS91Z, K-NS93Z

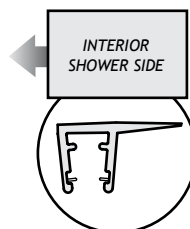
3

DOOR ASSEMBLY

- 3a. Use a mallet to install the magnetic gasket and the side gasket on the door panel. Ensure the textured side of the glass panel is located towards the outside of the shower.



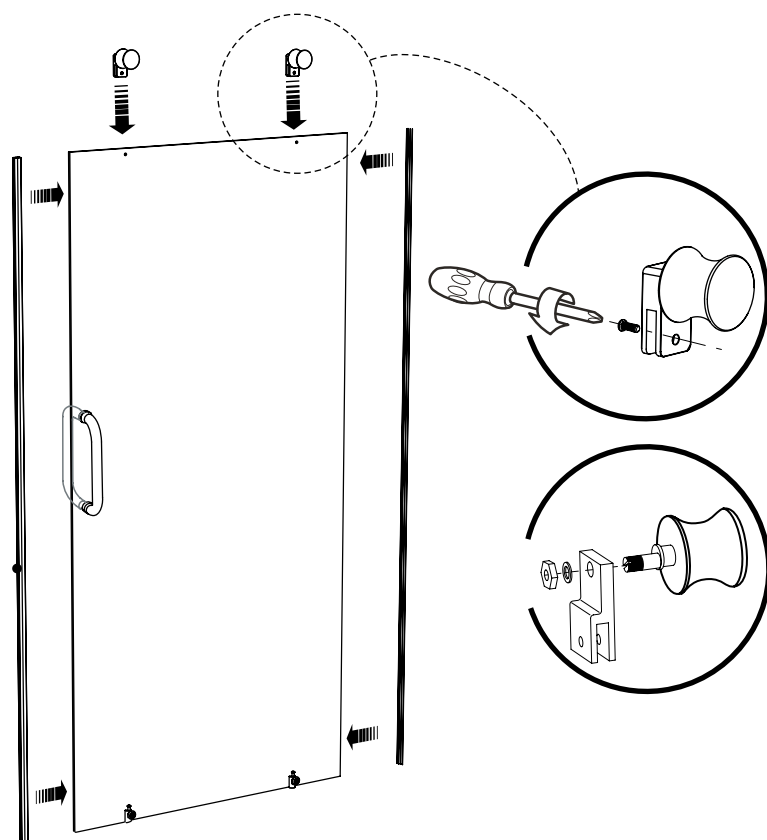
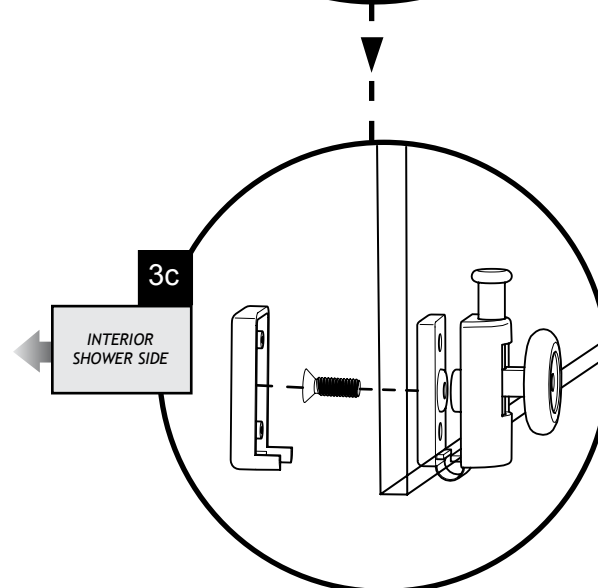
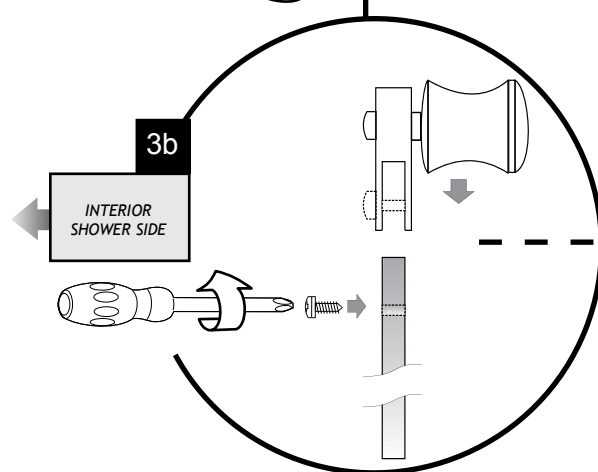
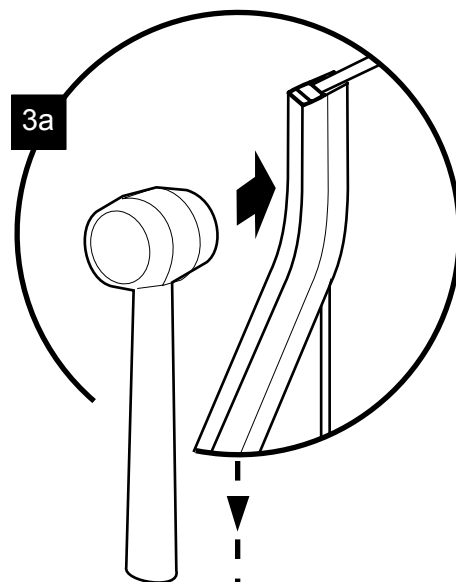
MAGNETIC GASKET



SIDE GASKET

- 3b. Install the rollers on the door panel so that the rollers point towards the outside of the shower. The vertical handle must always be on the opening side of the door towards the outside of the shower.

- 3c. Install the bottom sliders on the door panel while placing the hooks towards the outside of the shower. Place the bottom slider cap over the screw.



K-NS91Z

4

WALL JAMB INSTALLATION

4a. Place the door inside the shower by protecting the surface of the base. Insert the wall jambs into the expander and place the frame in its final position temporarily

4b. Level the shower frame. Mark the drilling location of the holes for the wall jamb then remove the frame temporarily.

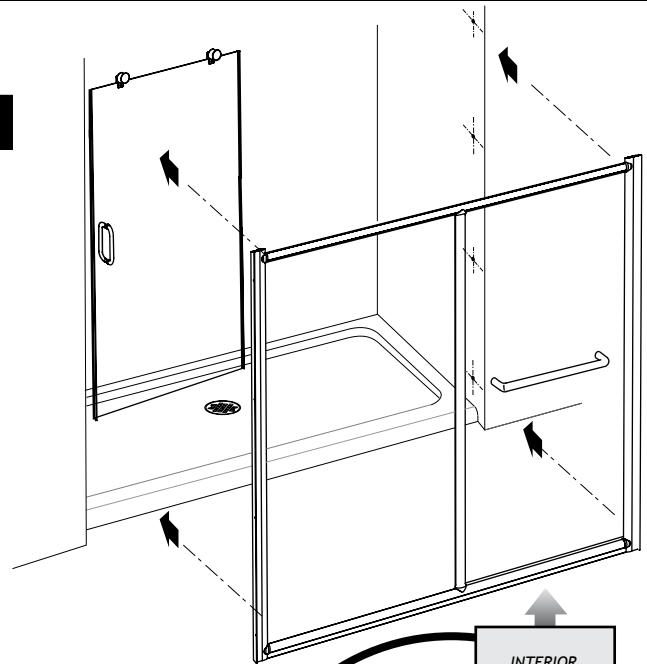
4c. With a 1/4" drill bit, drill 8 holes into the wall on the side of the opening of the door using the marks done in the previous step. Place a drop of silicone in each hole and insert 8 wall plugs.

4d. Fasten the wall jamb on the side of the opening of the door by using 1 3/8" (4) screws and the wall plugs already installed . Place the screw caps(4).

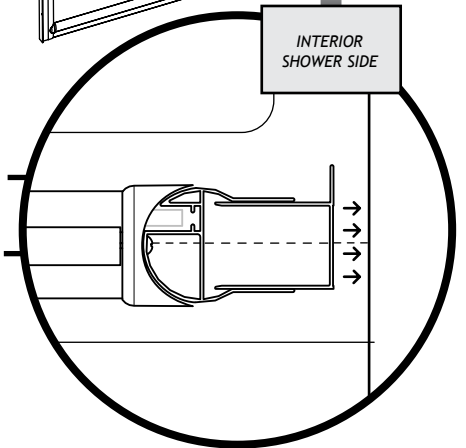
4e Insert the second wall jamb.Reposion the frame onto the center of the threshold.

4f Screw the wall jamb into the wall plugs already installed by using screws 1 3/8" (4) and place the screw caps .

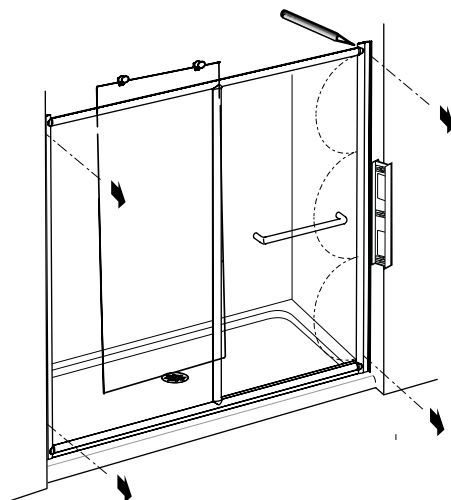
4a



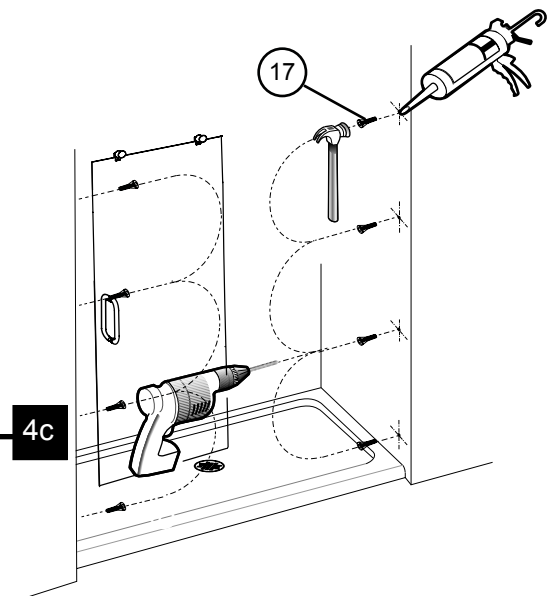
4b



4b

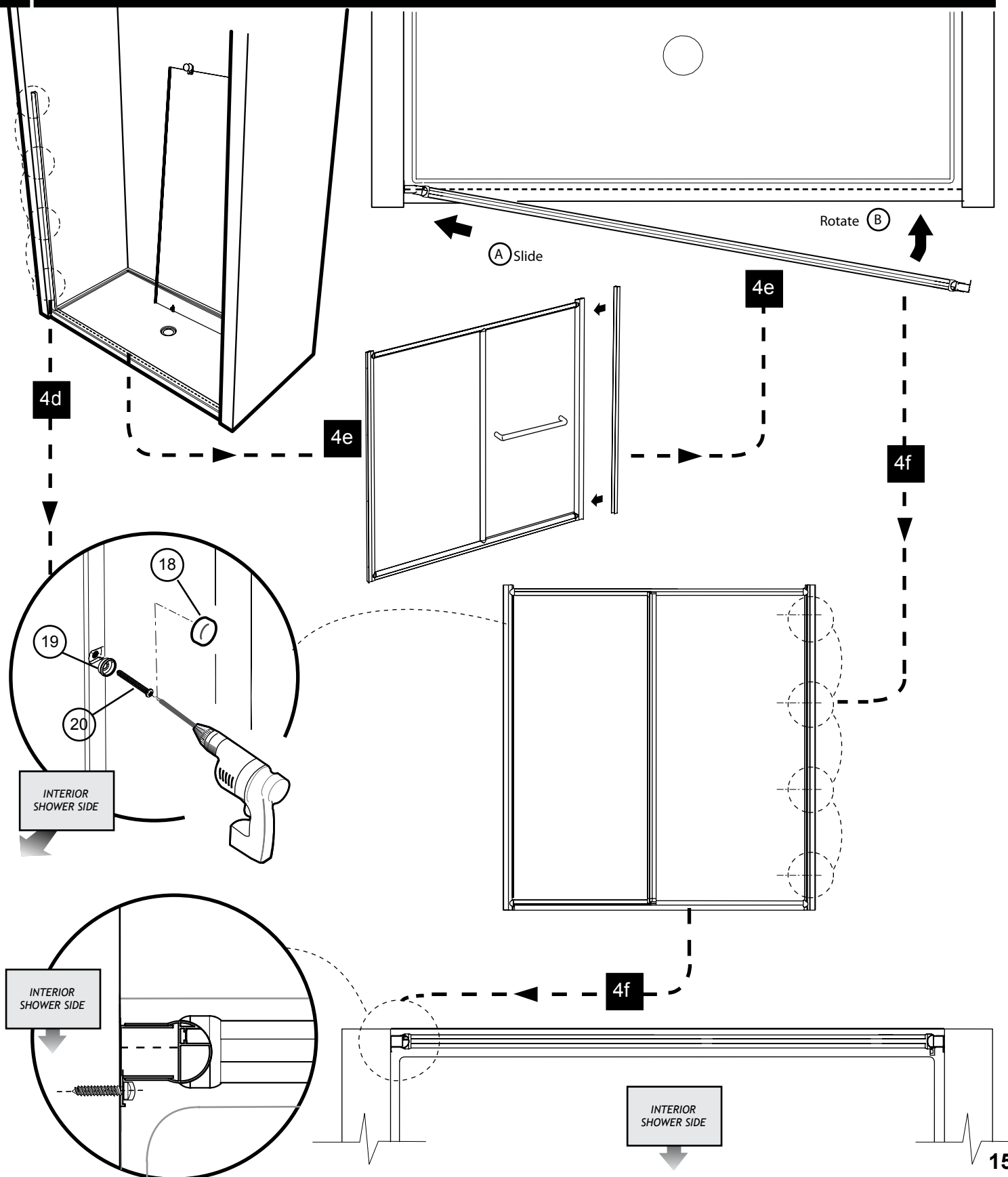


4c



K-NS91Z

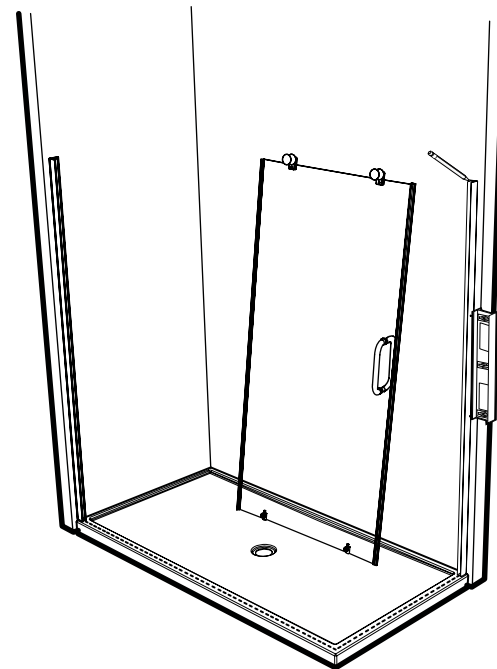
4 WALL JAMB INSTALLATION



K-NS93Z

4

WALL JAMB INSTALLATION



4a. Place the wall jambs against the wall so that the holes are located towards the interior of the shower. Center the opening of the wall jamb on the line marked previously. Ensure verticality with a level. Mark the holes position with pencil using the holes of the wall jamb for reference.

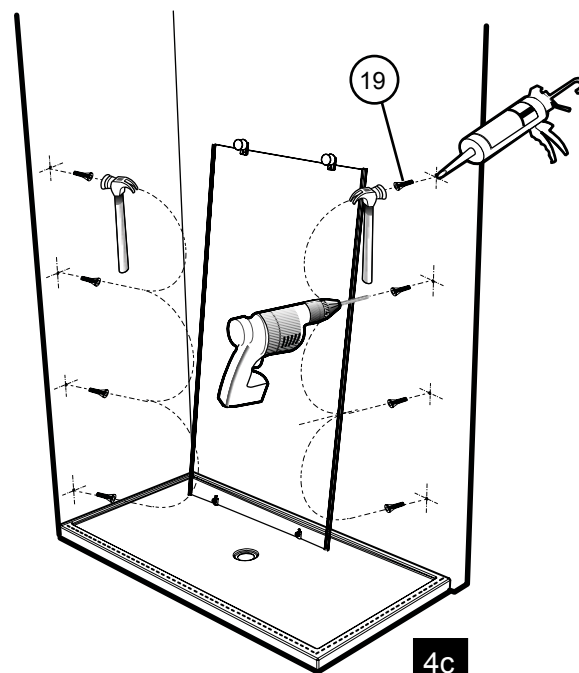
4b. Drill the holes in the wall with Ø1/4" drill bit. To install the shower door on ceramic tiles, use a Ø1/4" drill bit for ceramic tiles.

4a

4c. Insert one drop of silicone in each hole bored in the wall before inserting the wall plug (x8) on both side.

4d. Screw the two wall jambs into the wall plugs already installed in the wall by using screws 1 3/8" (x8). Ensure verticality with the level. Put screw caps on the screw heads.

4e. Insert the wall jambs into the expander and place temporarily the frame centred on the threshold line marked previously.



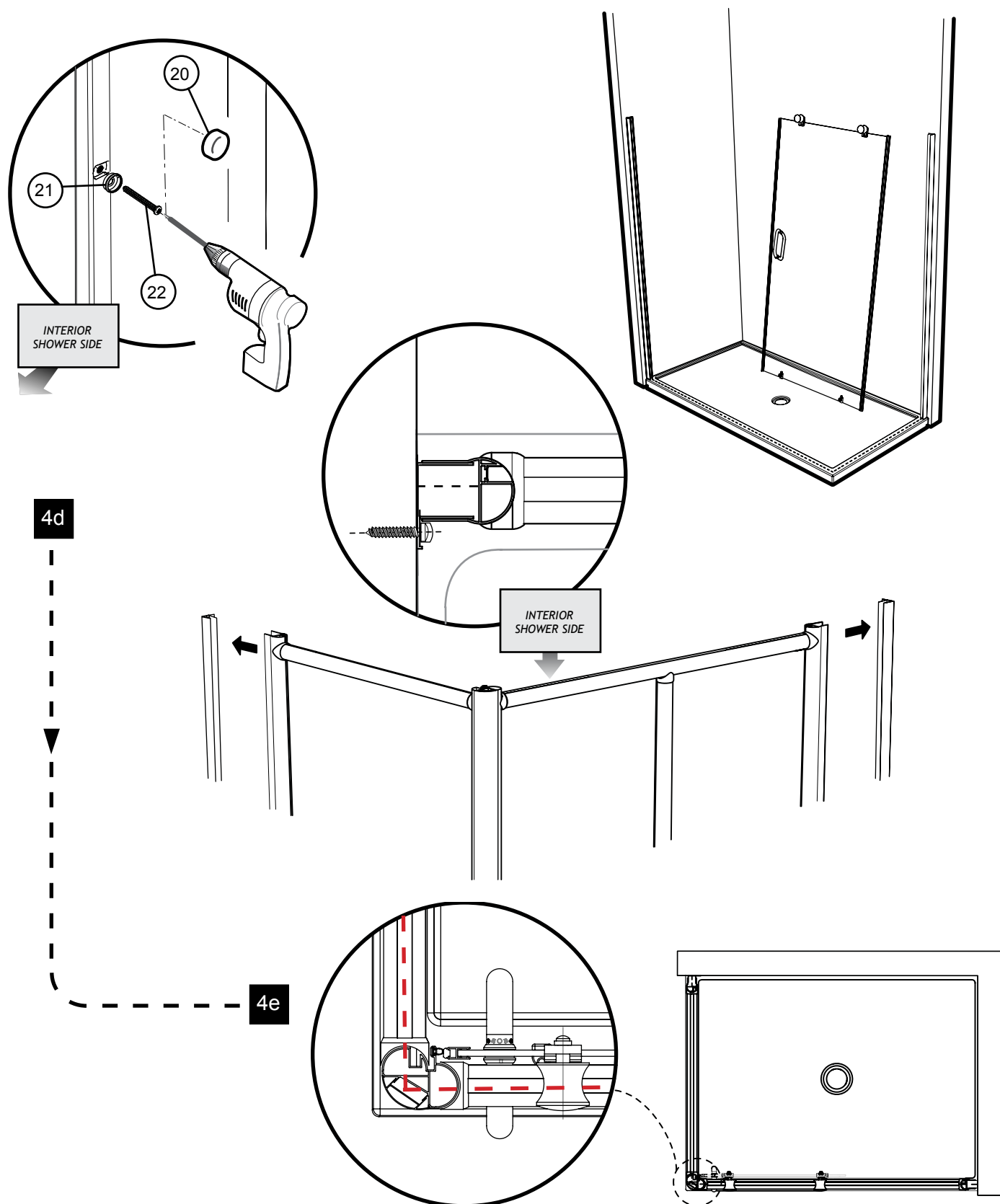
4c

4b

K-NS93Z

4

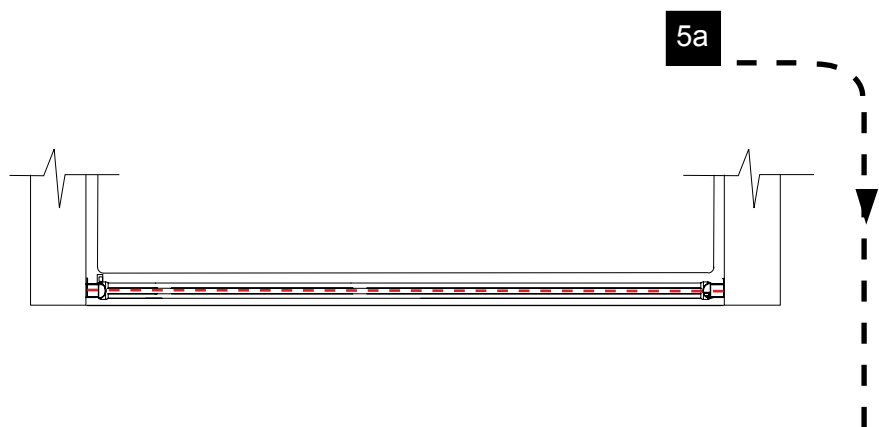
WALL JAMB INSTALLATION



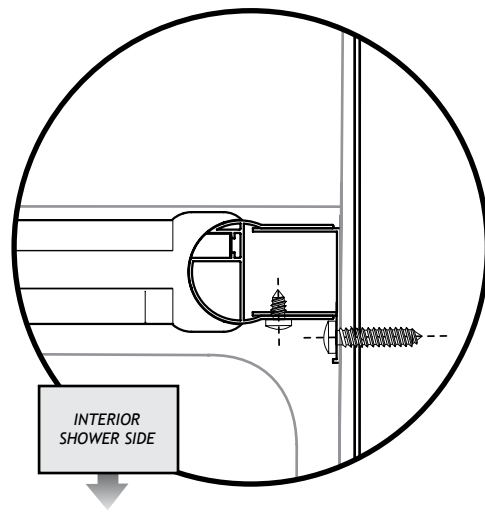
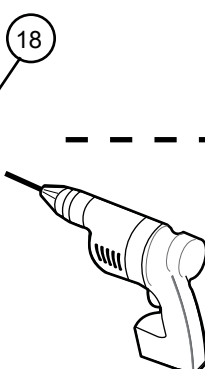
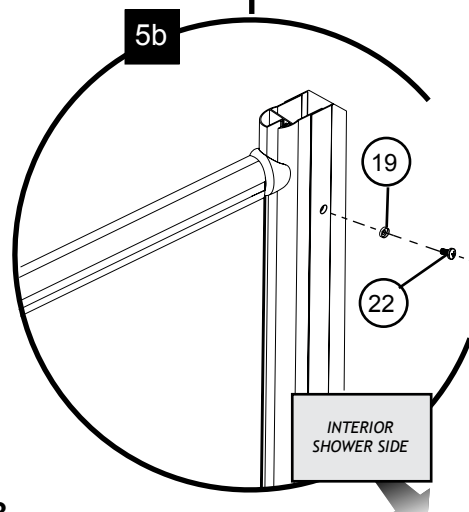
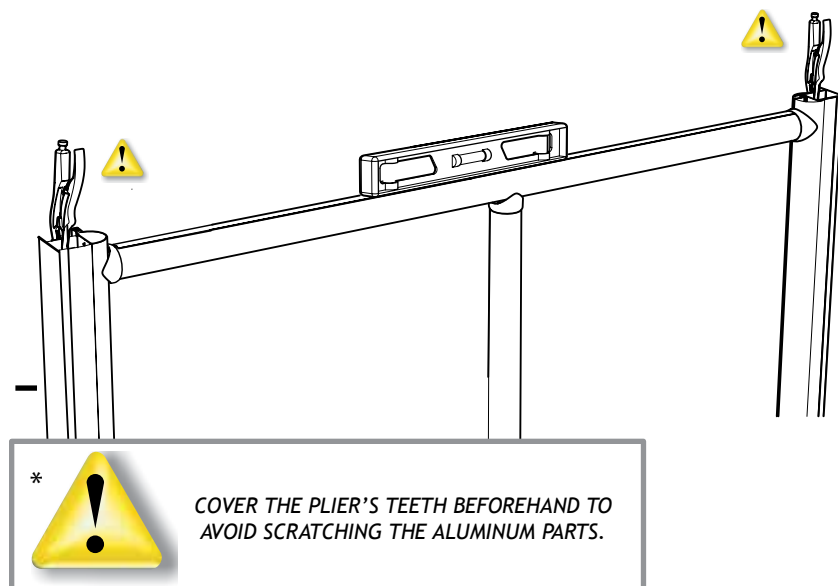
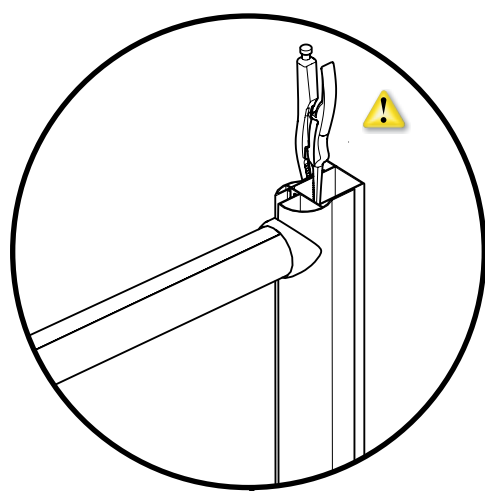
5

SECURE THE WALL JAMBS

5a. Level the top track and bottom track, by using locking pliers . Clamp the expanders with their wall jambs.*



5b. Secure the expanders with the wall jambs by using the 3/8" self drilling screws (6) and screw caps (6).



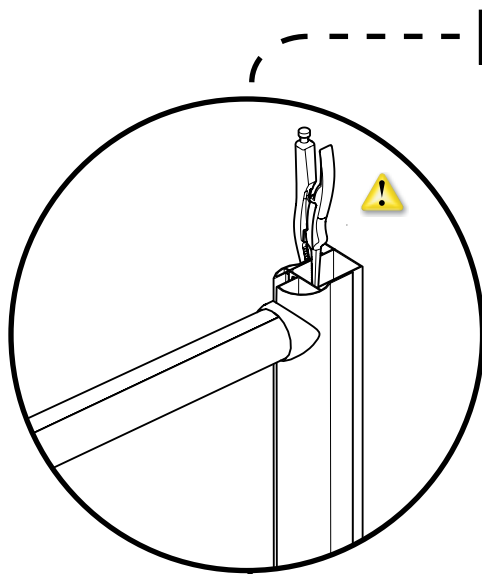
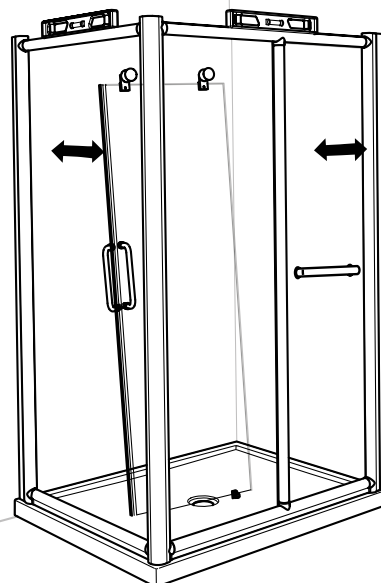
K-NS93Z

5

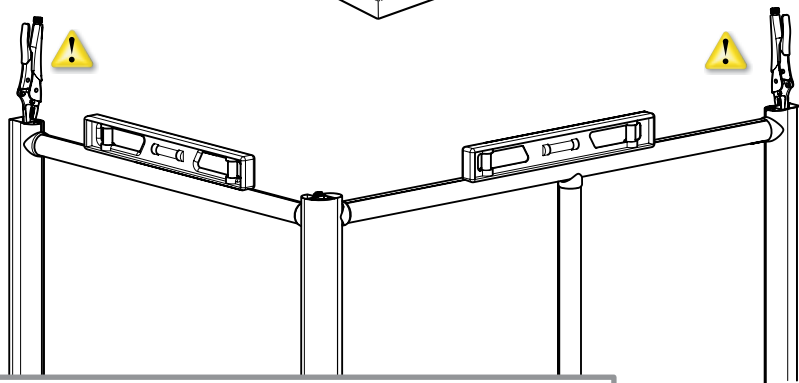
SECURE THE WALL JAMBS

5a. Level the top track and bottom track, by using locking pliers . Clamp the expanders with their wall jambs.*

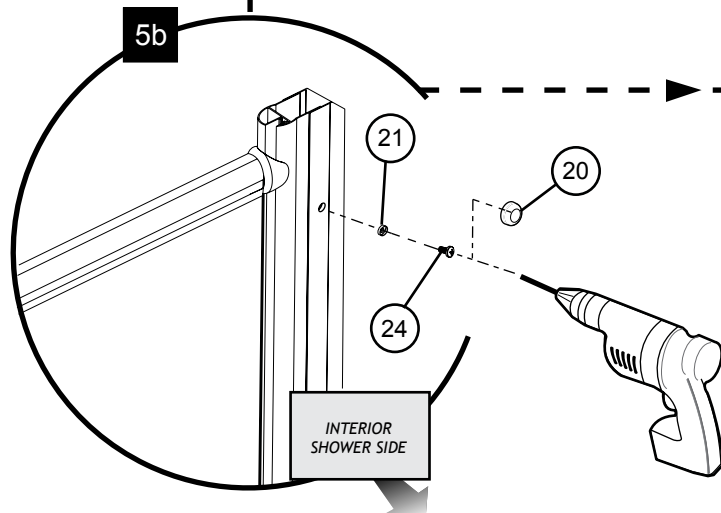
5b. Secure the expanders with the wall jambs by using the 3/8" self drilling screws (x6) and screw caps (x6).



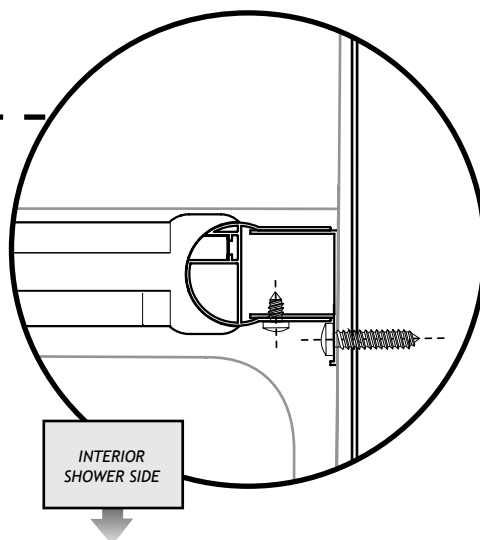
5a



* COVER THE PLIER'S TEETH BEFOREHAND TO AVOID SCRATCHING THE ALUMINUM PARTS.



5b

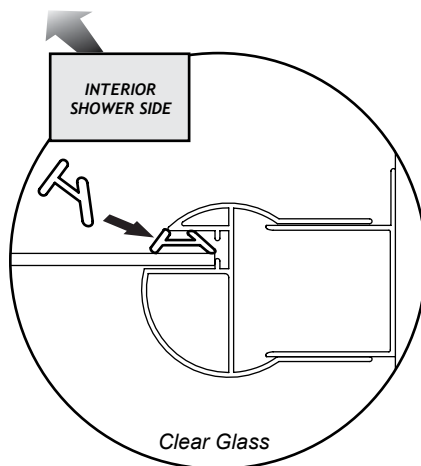


K-NS91Z, K-NS93Z

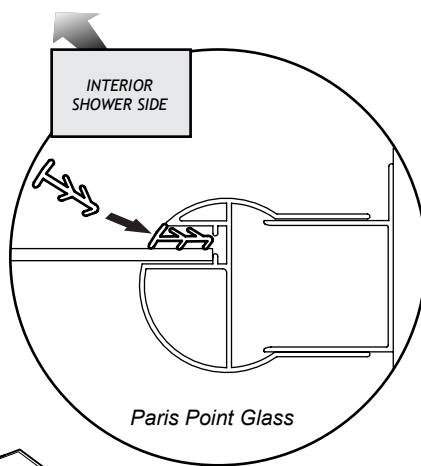
6

ACCESSORIES INSTALLATION

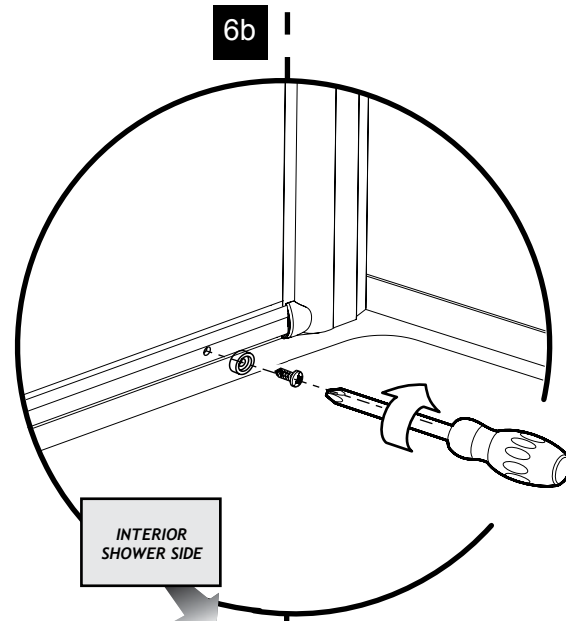
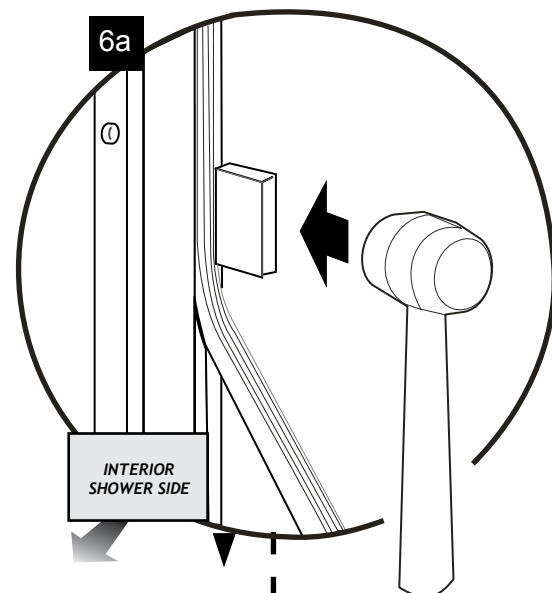
6a. Using a mallet and block install the two vertical gaskets. One between the expander and fix panel, the second between the vertical column and fix panel. The gasket must be installed inside the shower.



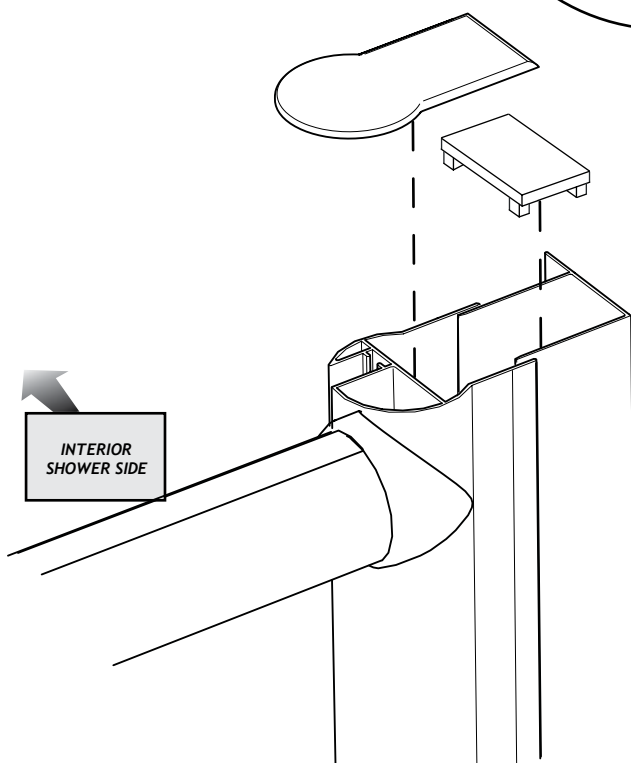
6b. The bumper is located on the bottom track opposite the opening of the door. Use a screw 1/2" to install the bumper.



6c. Place the expander caps on the expanders.



6c



K-NS91Z, K-NS93Z

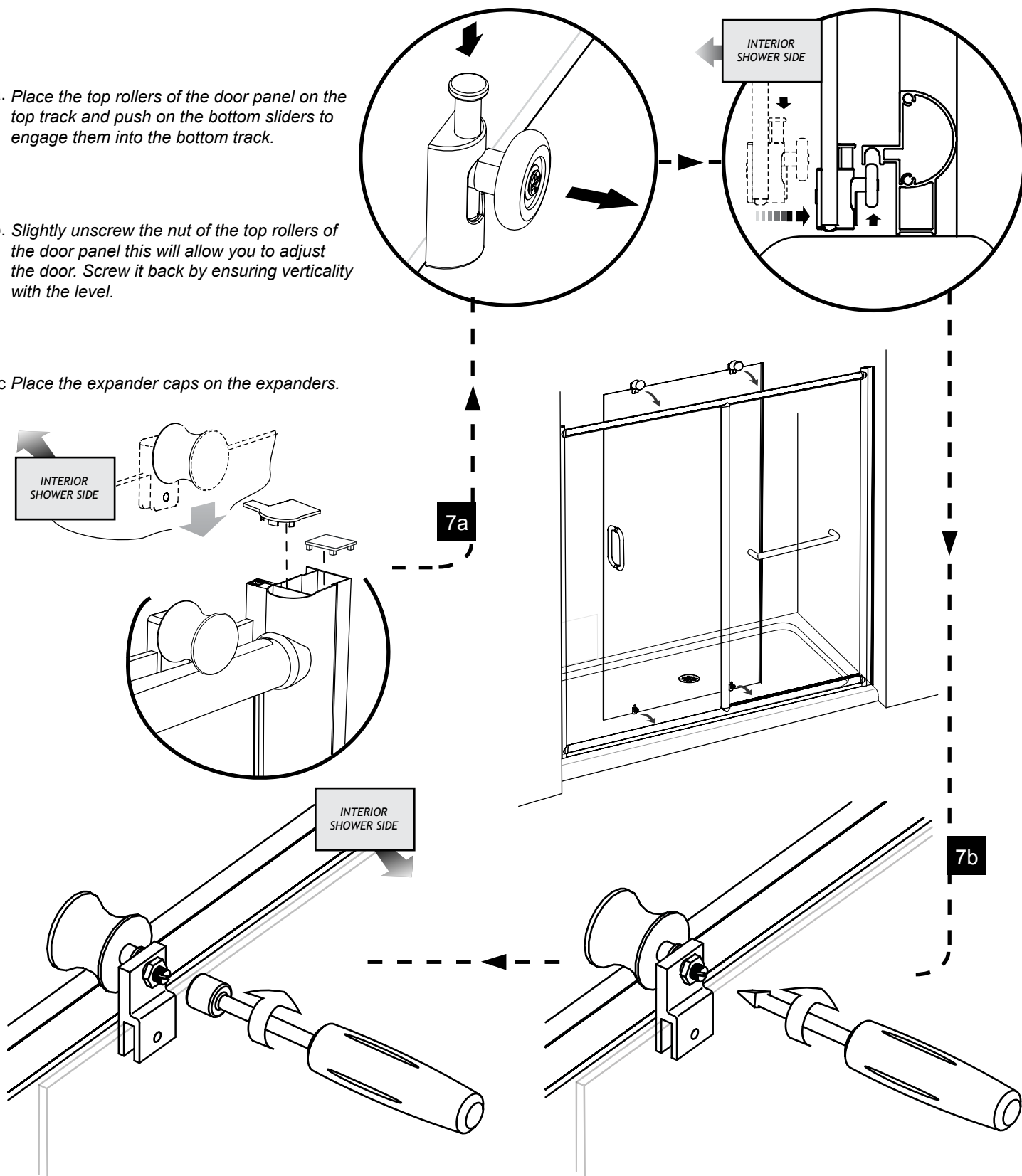
7

DOOR PANEL ADJUSTEMENT

7a. Place the top rollers of the door panel on the top track and push on the bottom sliders to engage them into the bottom track.

7b. Slightly unscrew the nut of the top rollers of the door panel this will allow you to adjust the door. Screw it back by ensuring verticality with the level.

7c Place the expander caps on the expanders.



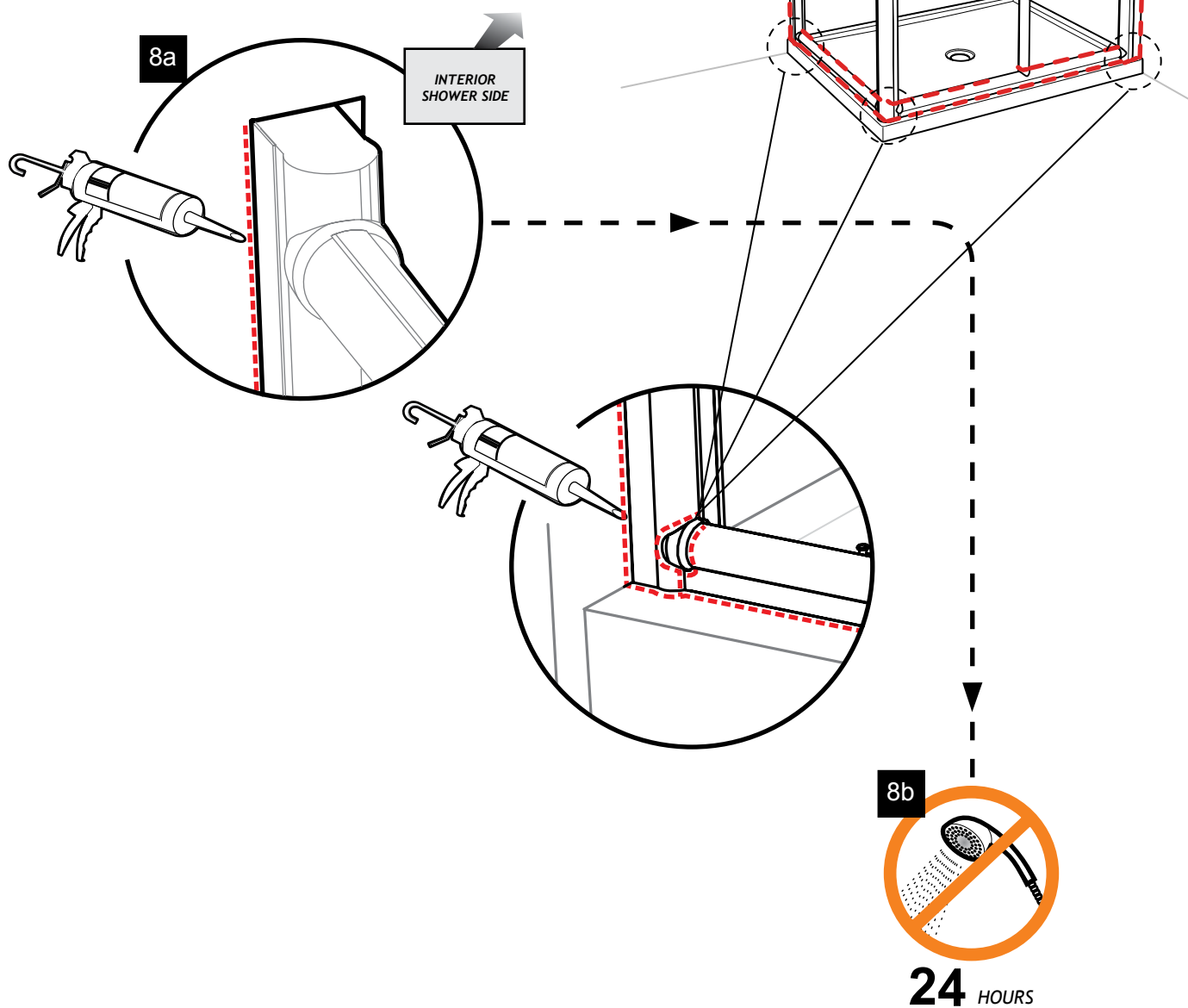
K-NS91Z, K-NS93Z

8

SEALING

8a. Silicone the outside of the frame between the wall and the wall jamb, along the bottom rail, below the fix panel and at the bottom of the return panel if applicable.

8b. Wait 24 hours before using the shower to allow the silicon to dry.



This image shows a single sheet of white paper with horizontal ruling lines. The lines are evenly spaced and run across the width of the page. There are no margins, text, or other markings on the paper.