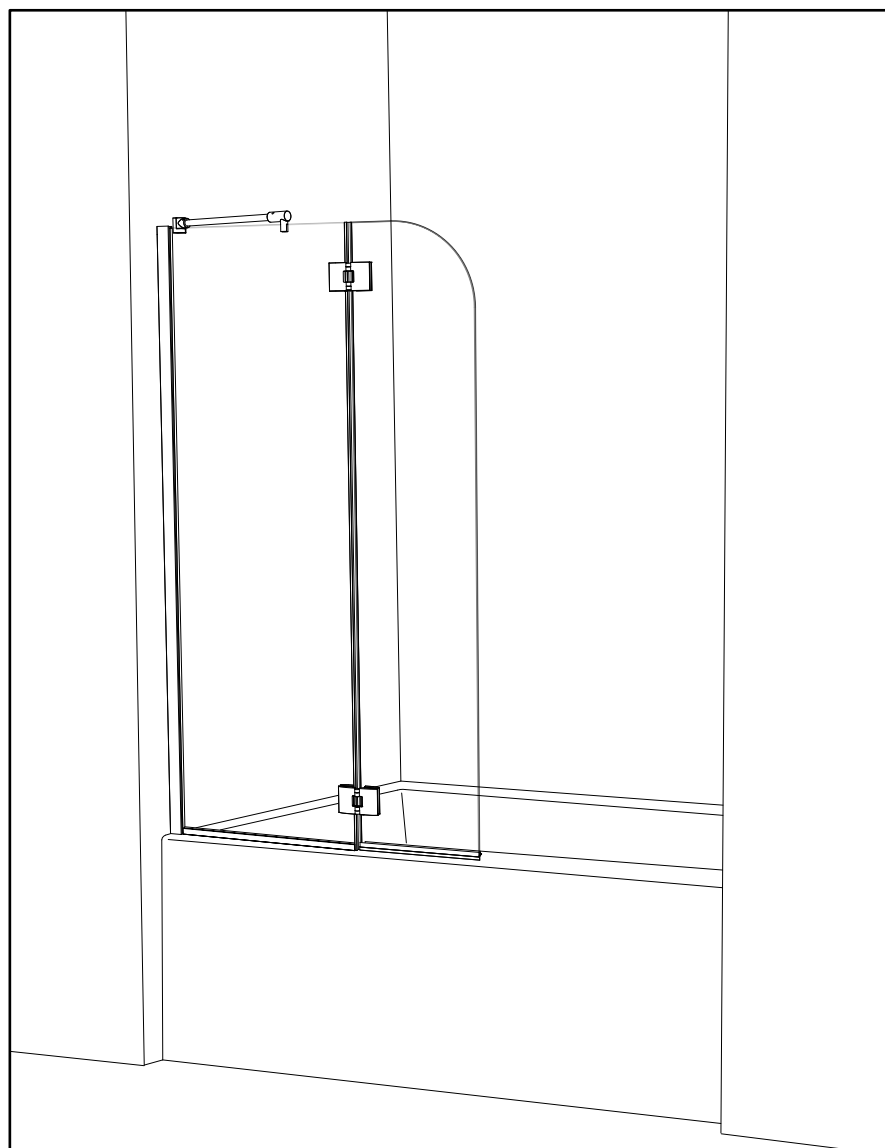


L-RTSZ24
INSTRUCTION MANUAL

ALUMAX
Lani Collection



*Please keep this manual and product code number for future reference
and to order replacement parts if necessary.*

- **Table of Contents**

MODEL NUMBER.....	2
GENERAL INSTRUCTIONS	3
INSTALLATION OVER CERAMIC TILES	3
NOTICE	3
CARE FOR YOUR FRAMELESS SHOWER DOOR	3
PARTS LISTING.....	4
PROVIDED HARDWARE.....	5
TOOLS AND MATERIALS REQUIRED	5
1. MOUNT THE WALL JAMB.	6
2. FASTEN THE “U” CHANNEL.	7
3. INSTALL THE FIXED PANEL.....	8
4. INSERT THE FIXED PANEL GASKET.	8
5. INSTALL THE HINGES.....	9
6. FASTEN THE SUPPORT BAR.....	9
7. INSTALL THE DOOR PANEL.....	10
8. SILICONE SEAL THE EXTERIOR.	11

- **General Instructions**

- Read this manual carefully and completely before proceeding.
- It is recommended that you wear safety glasses at all times during the installation.

- **Installation over Ceramic Tiles**

- Silicone should be used to seal the gap where the ceramic tiles meet the fixed panel.
- If your shower door is to be installed over ceramic tiles, the tiles should lay completely under the wall jamb.

- **Notice**

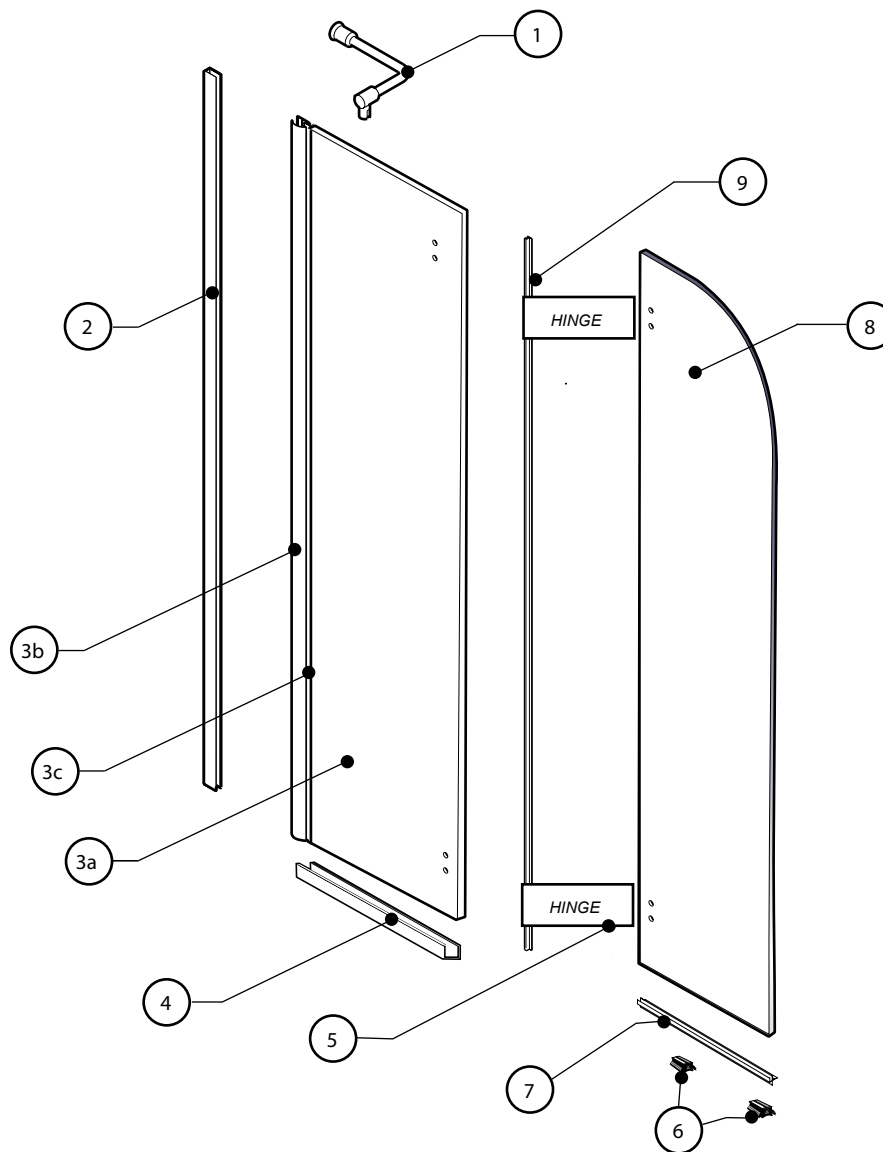
- Caulking: no sealant is required inside the shower.
- All models are equipped with transparent sealing gaskets.

- **Care for your Frameless Shower Door**

- Never use scouring powder pads or sharp instruments on metal pieces or glass panels.
An occasional wiping down with a mild soap diluted in water is all that is needed to keep the panels and aluminum parts looking new.
- We recommend wiping the glass panels with a squeegee after each use.

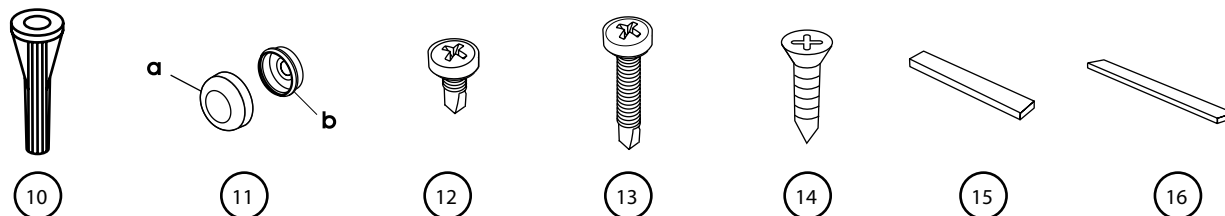
**Product specifications are subject to change
without notice.**

PARTS LISTING



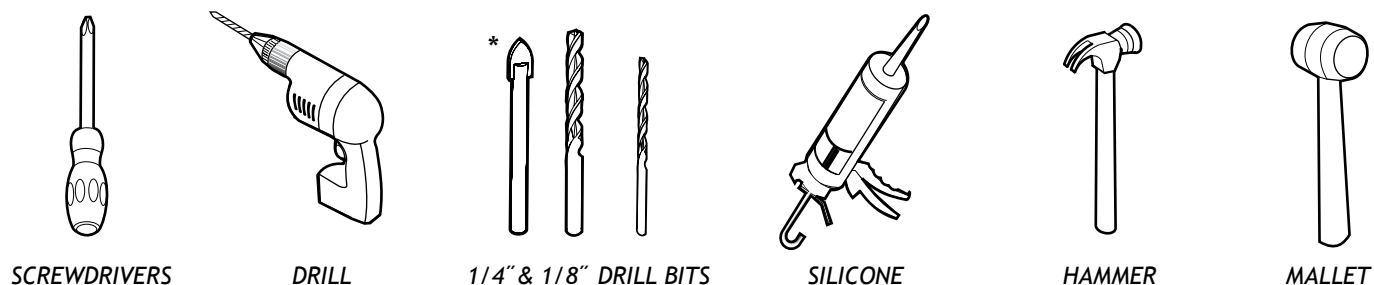
ITEM	PARTS	QTY
1	SUPPORT BAR	1
2	WALL JAMB	1
3a	SIDE PANEL	1
3b	EXPANDER	1
3c	GASKET	1
4	ALUMINUM "U" CHANNEL	1
5	HINGE	2
6	LEVELING BLOCKS	2
7	BOTTOM DOOR GASKET	1
8	DOOR PANEL	1
9	SIDE PANEL GASKET	1

PROVIDED HARDWARE

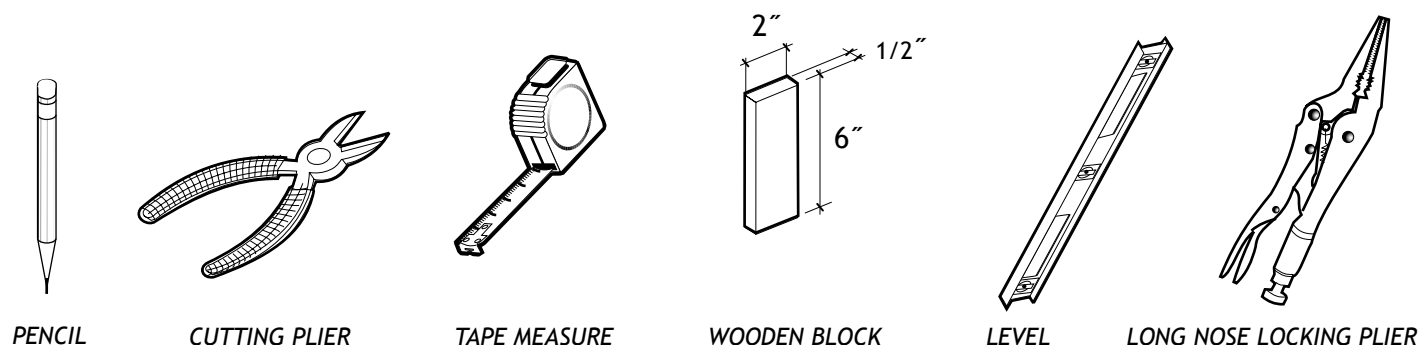


ITEM	HARDWARE	QTY
10	WALL PLUG	4
11	SCREW CAP	4
12	SELF DRILLING SCREW	3
13	SELF-DRILLING SCREW	3
14	FLAT HEAD SCREW	1
15	CLEAR SETTING BLOCK	2
16	CLEAR SETTING BLOCK	2

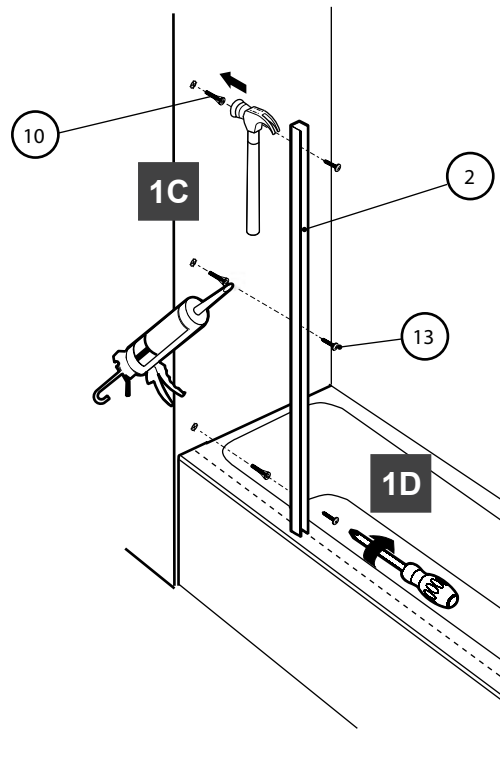
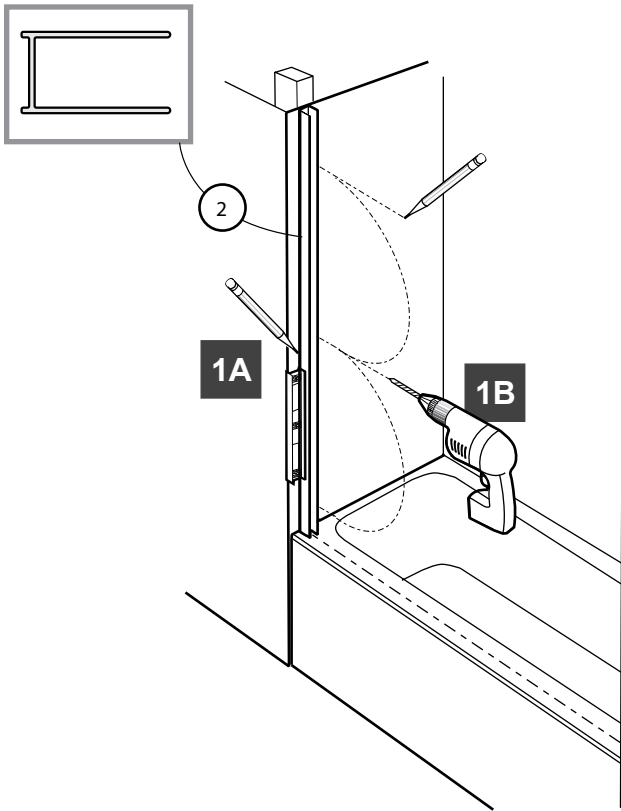
TOOLS AND MATERIALS REQUIRED



* If the shower panels are to be assembled on ceramic tiles, use a 1/4" drill bit for ceramic tiles.



1 MOUNT THE WALL JAMB.



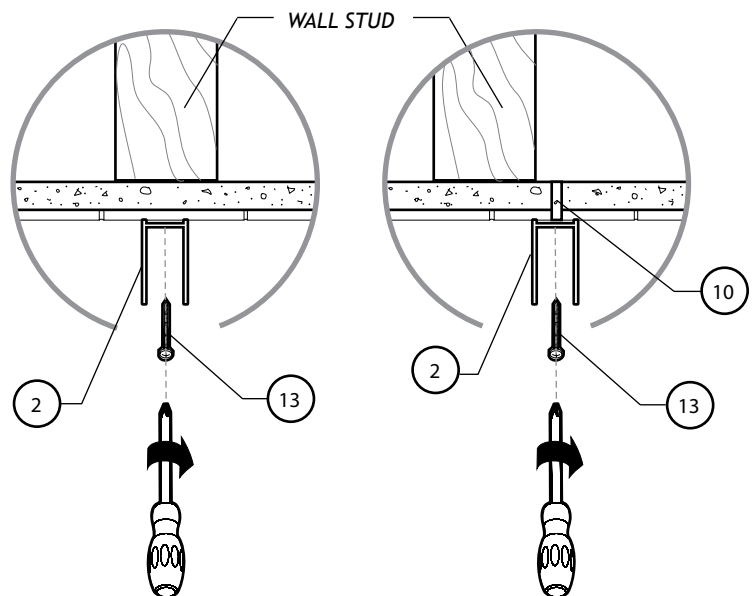
1A. Place the wall jamb (#2) on the center of the tub ledge and align it using a level. Trace the outer edge of the wall jamb and the holes onto the wall. Remove the wall jamb.

1B. With a 1/4" drill bit, drill 3 holes into the wall using the marks as a guide.

1C. (a) Should you find the wood studs directly behind the drilled hole location, skip this step. (b) Insert the wall plugs (#10) and put in each a drop of silicone.

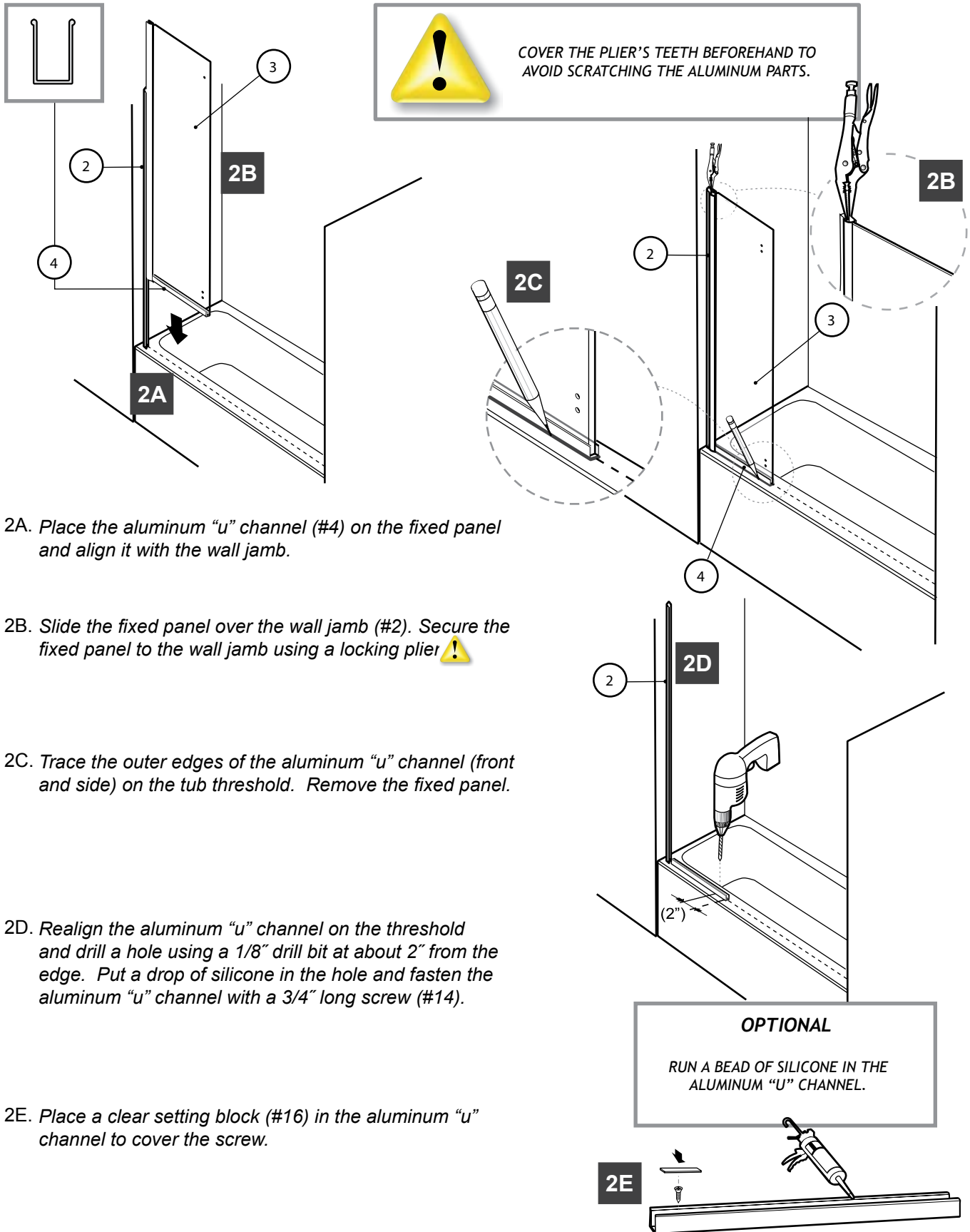
1C(a)
TOP VIEW

1C(b)
TOP VIEW

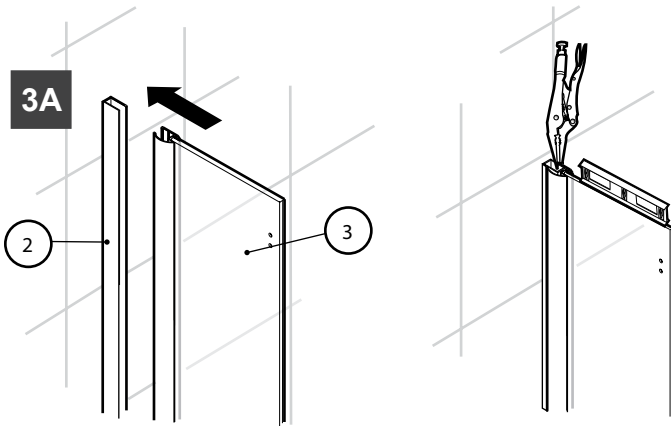


1D. Secure the wall jamb using the 1 1/4" screws (#13).

2 FASTEN THE "U" CHANNEL.



3 INSTALL THE FIXED PANEL.

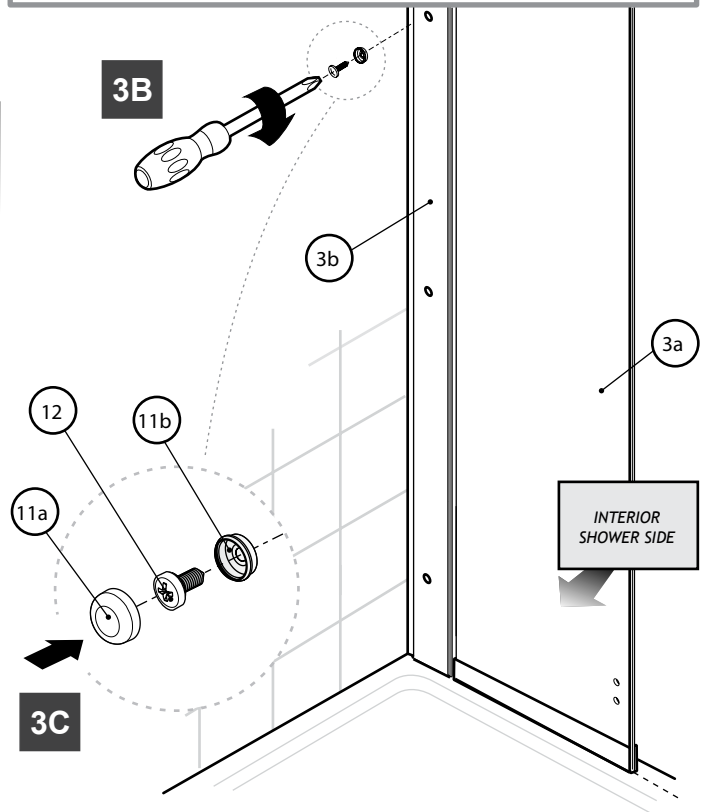


3A. Reposition the fixed panel on the wall jamb and in the aluminum "u" channel. Secure it with the plier.



IF THE PANELS NEED MORE ADJUSTMENTS, SHIM WITH 1/8" CLEAR SETTING BLOCKS (ITEM#15), PRIOR TO FIXED PANEL.

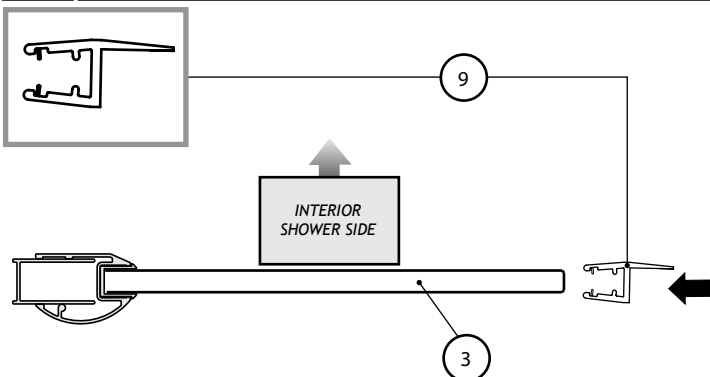
3B



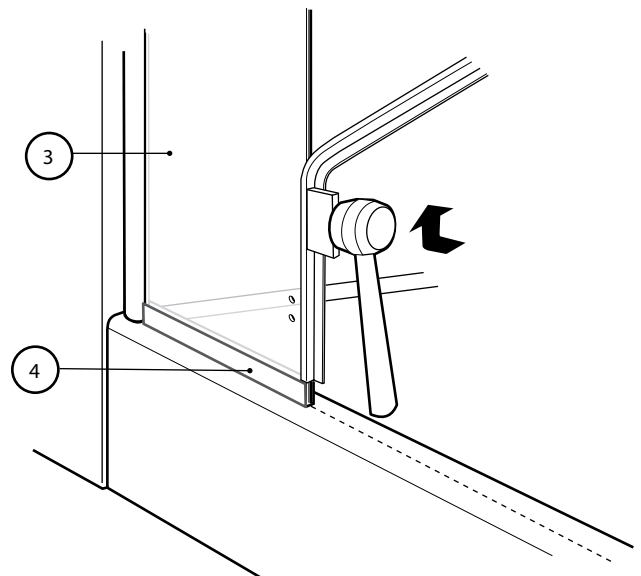
3B. Combine the 3 3/8" screws (#12) with the inner screw caps (#11b). Fasten the fixed panel.

3C. Snap the screw caps (#11a) over the screws.

4 INSERT THE FIXED PANEL GASKET.

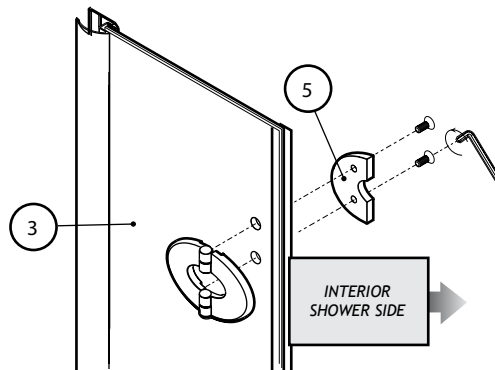


4A. Align the fixed panel gasket to the top of the aluminum "u" channel (#4). Insert it with a 2" x 6" x 1/2" block and a mallet. Trim the excess using the cutting plier.



5 INSTALL THE HINGES.

- 5A. Fasten one side of the hinges (#5) to the fixed panel. Do not tighten all the way for this step to allow other door adjustments.



6 FASTEN THE SUPPORT BAR.

- 6A. Loosen the set screws located in the connector (#1c).

- 6B. Pivot the connector to orient the glass clip (#1d) towards the fixed panel.

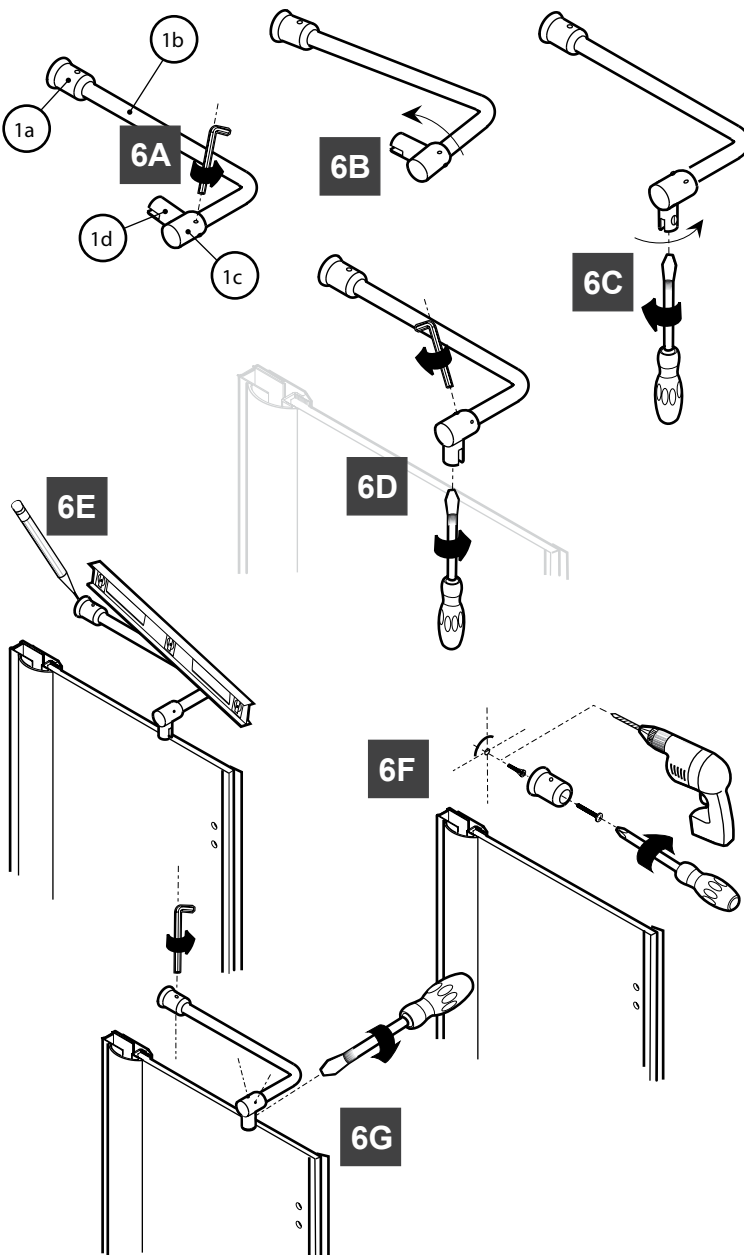
Unscrew the glass clip. Align the slotted hole to the fixed panel. The slotted screw head should be on the inside of the shower.

- 6D. Tighten all the screws.

- 6E. Rest the support bar (#1) on the fixed panel inside the tub. Level it and trace an arc on the wall.

- 6F. Locate the screw position using the cylindrical part. With a 1/4" drill bit, drill a hole in the wall and insert a wall plug (#10).

- 6G. Put the bar back in place. Tighten all the screws.



7 INSTALL THE DOOR PANEL.



IT IS BEST TO HAVE 2 PEOPLE WORKING ON THIS STEP.

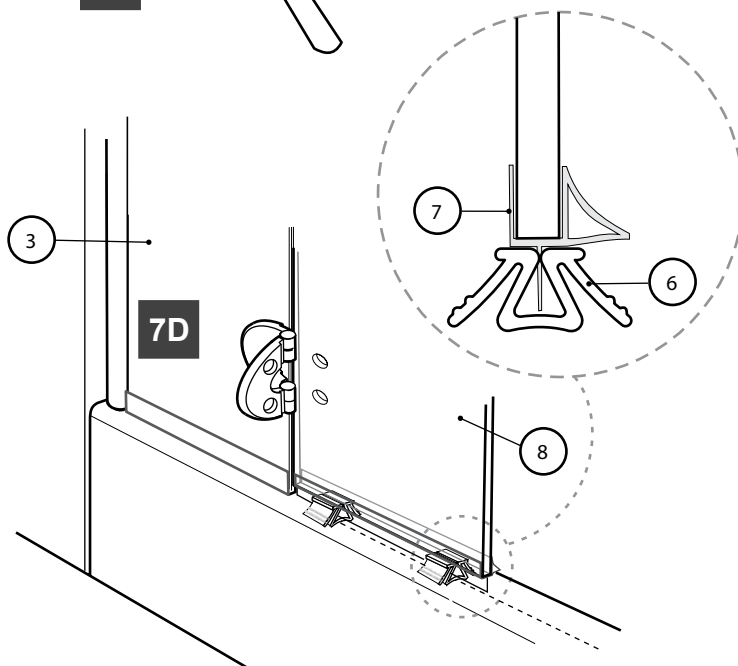
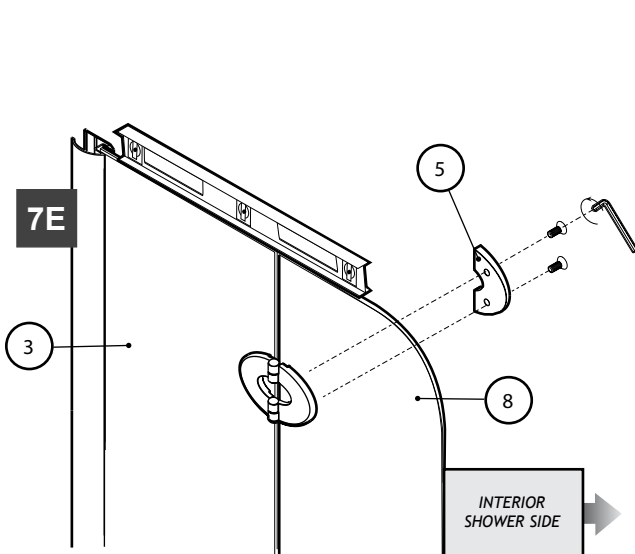
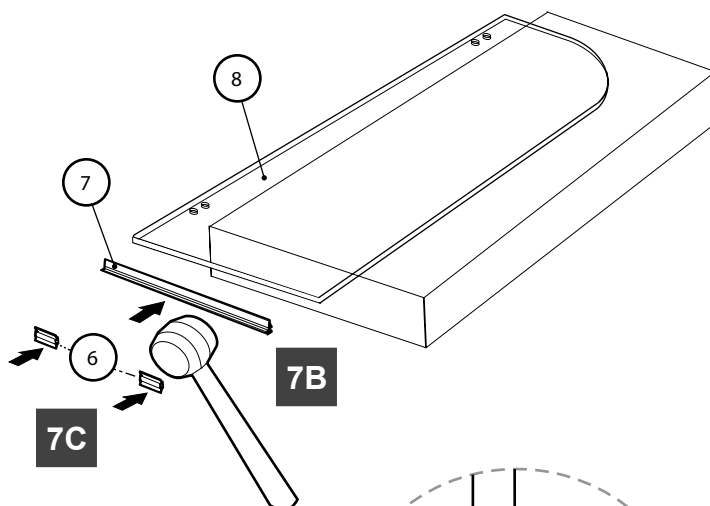
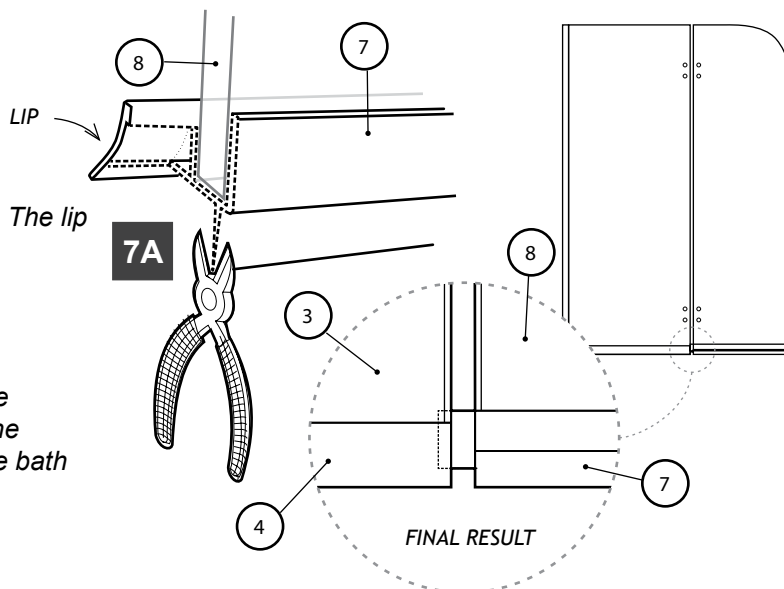
7A. Cut the bottom door gasket (#7) as illustrated. The lip should be about 3/4" longer than the rest.

7B. Rest the door panel on a flat surface. With the mallet, insert the bottom door gasket (#7) at the bottom of the door. Make sure the lip faces the bath side.

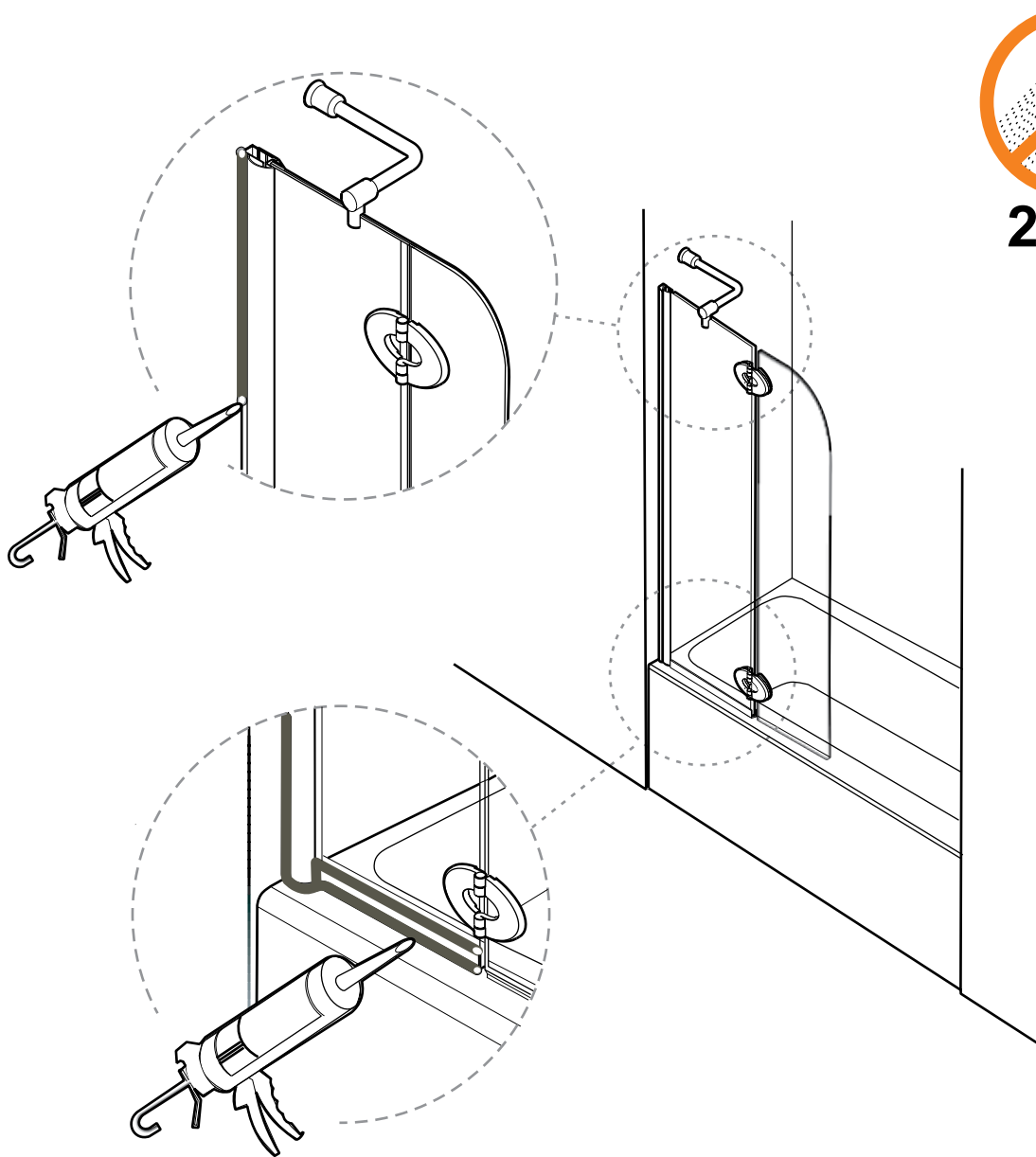
7C. Install the 2 leveling blocks (#6) onto the bottom lip of the gasket.

7D. Place the door panel vertically next to the fixed panel (#3). The holes for the hinges should be aligned.

7E. Fasten the second part of each hinge (#5). The door panel must be leveled before tightening the hinges completely. Remove the leveling blocks.

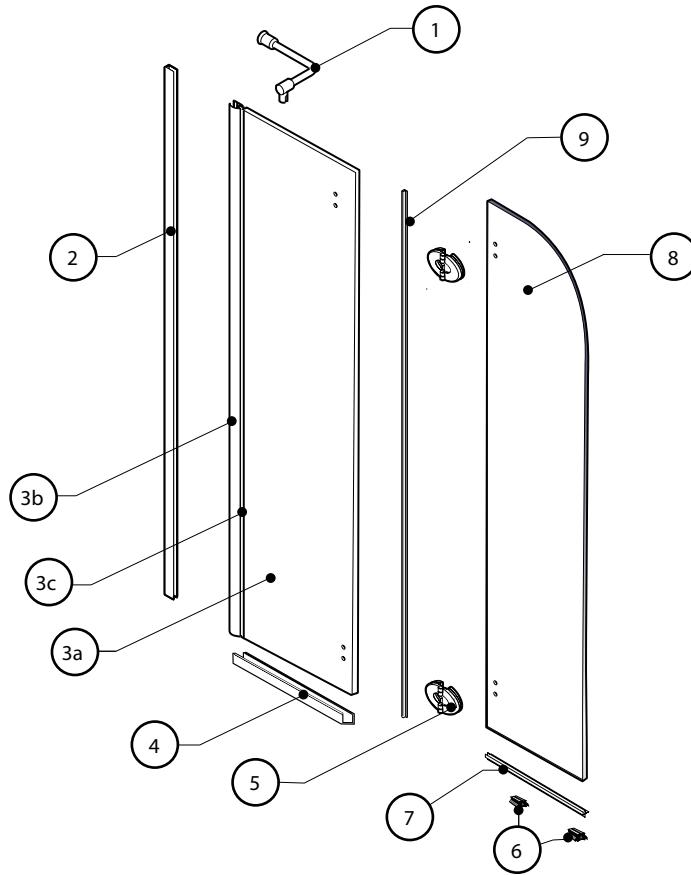


8 SILICONE SEAL THE EXTERIOR.

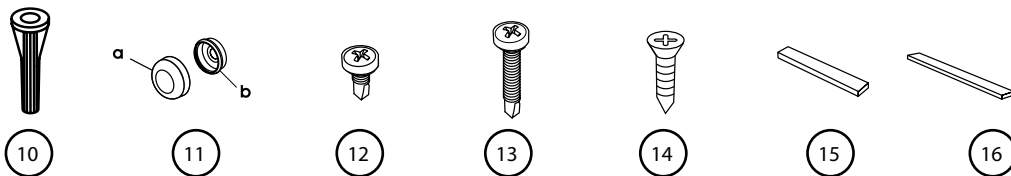


8A. Silicone seal the exterior of the shower along the wall and the aluminum "u" channel (#4).

PRODUCTION SPECS



ITEM	PARTS	QTY
1	SUPPORT BAR	1
2	WALL JAMB	1
3a	SIDE PANEL	1
3b	EXPANDER	1
3c	GASKET	1
4	ALUMINUM "U" CHANNEL	1
5	HINGE	2
6	LEVELING BLOCKS	2
7	BOTTOM DOOR GASKET	1
8	DOOR PANEL	1
9	SIDE PANEL GASKET	1



ITEM	HARDWARE	QTY
10	WALL PLUG	4
11	SCREW CAP #8/8	4
12	SELF DRILLING SCREW #8-3/8	3
13	SELF-DRILLING SCREW #8-1 1/4	3
14	FLAT HEAD SCREW #6-3/4	1
15	CLEAR SETTING BLOCK	2
16	CLEAR SETTING BLOCK	2