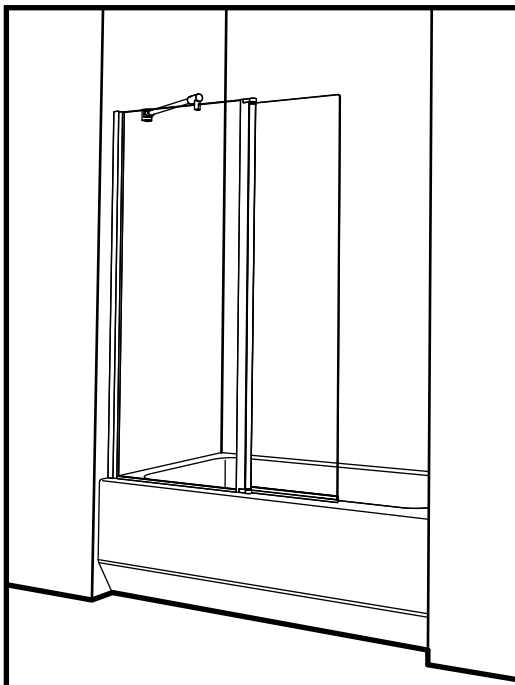
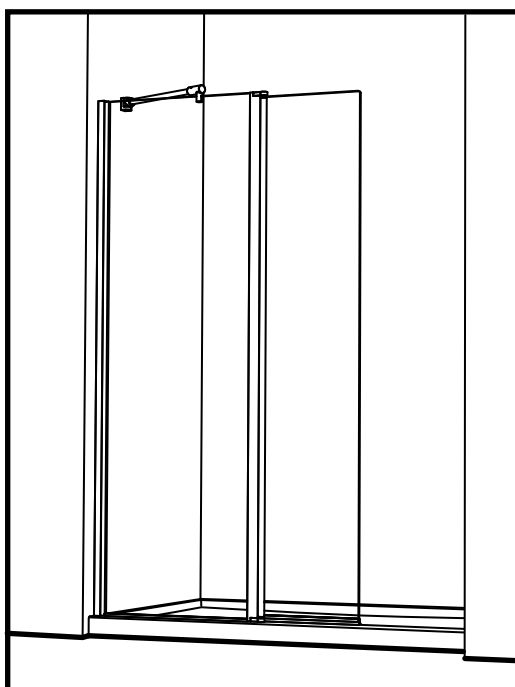


Tub shield



Shower shield



Please keep this manual and product code number for future reference and replacement parts ordering if necessary.

GENERAL INSTRUCTIONS

- Read this manual carefully and completely before proceeding.
- It is recommended that you wear safety glasses at all times during the installation.

INSTALLATION OVER CERAMIC TILES

- Silicone should be used to seal the gap where the ceramic tiles meet the fixed panel.
- If your shower door is to be installed over ceramic tiles, the tiles should lay completely under the wall jamb.

NOTICE

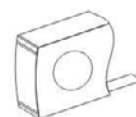
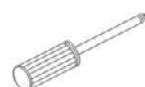
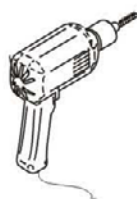
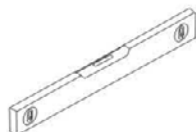
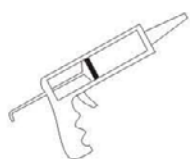
- Caulking: no sealant is required inside the shower. Unless otherwise stated.
- Some models are equipped with clear sealing gaskets.

CARE FOR YOUR SHOWER DOOR

- Never use scouring powder pads or sharp instruments on metal pieces or glass panels. An occasional wiping down with a mild soap diluted in water is all that is needed to keep the panels and aluminum parts looking new.
- We recommend wiping the glass panels with a squeegee after each use.






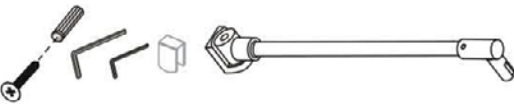




Product specifications are subject to change without notice.

Tools Required

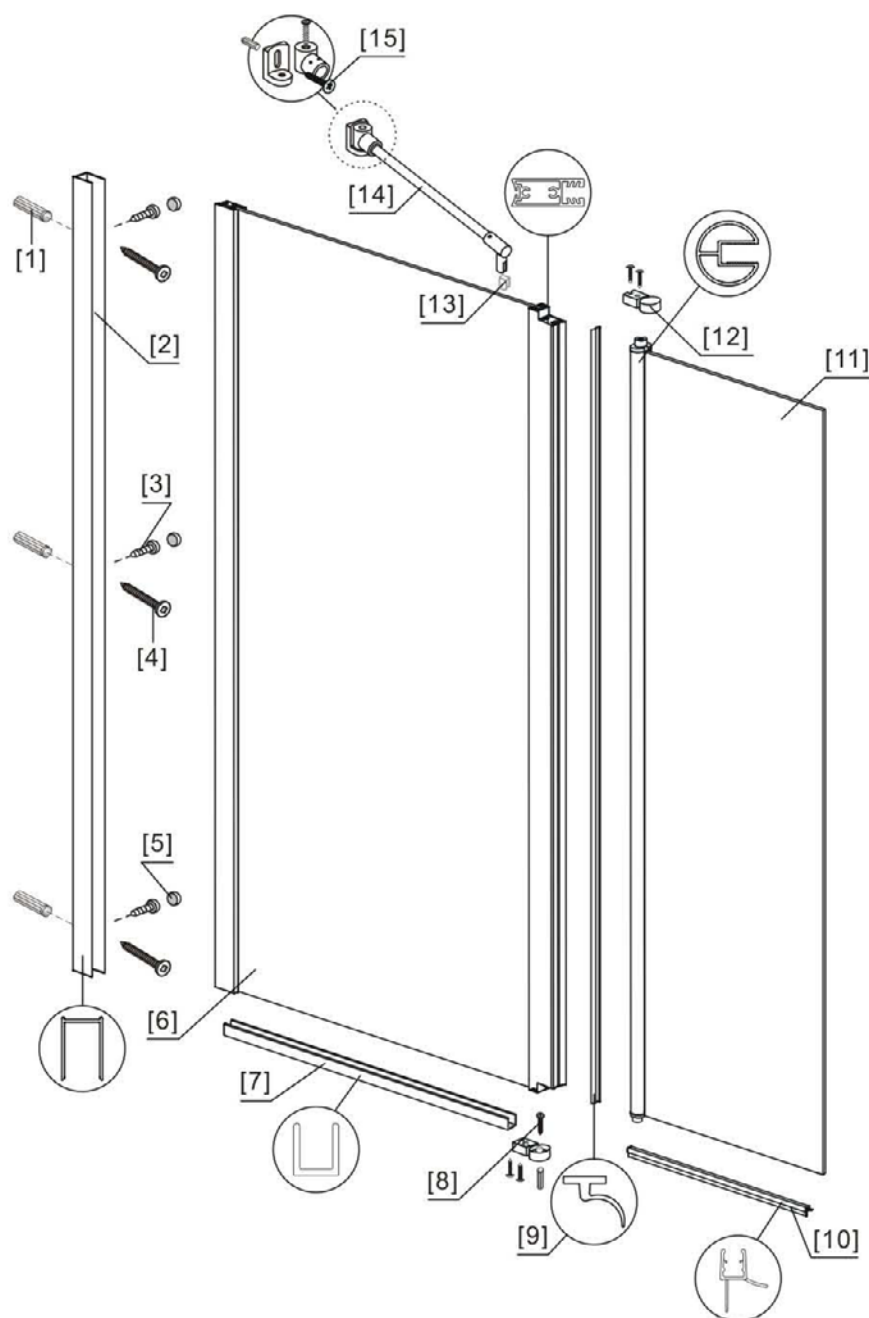


This product is heavy and may require two people to install.

◆ Box Contents:

[1] 1xWall Post.	
[2] 1xInstallation / Instruction.	
[3] 3xWall Plugs. 3xScrews M4x35.	
[4] 3xScrews M4x8. 3xScrew Cover Caps.	
[5] 4xScrews M4x35 . 1xFlat Screw M4x35 . 2 x Hinges. 1xWall Plug .	
[6] 1xBracket. 1xWall Plug . 1xFlat Screw M4x35. 1xWasher .	
[7] 2xWater Deflectors .	
[8] 1xAluminum Seal .	
[9] 1xFixed Panel.	
[10] 1xDoor Panel.	

◆ Assembly Drawing

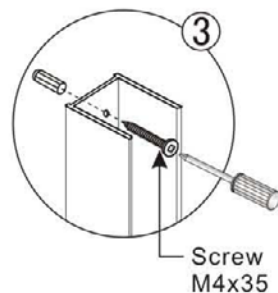
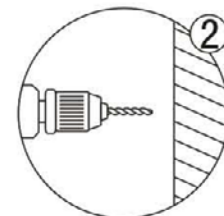
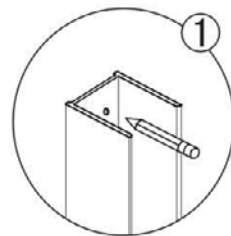
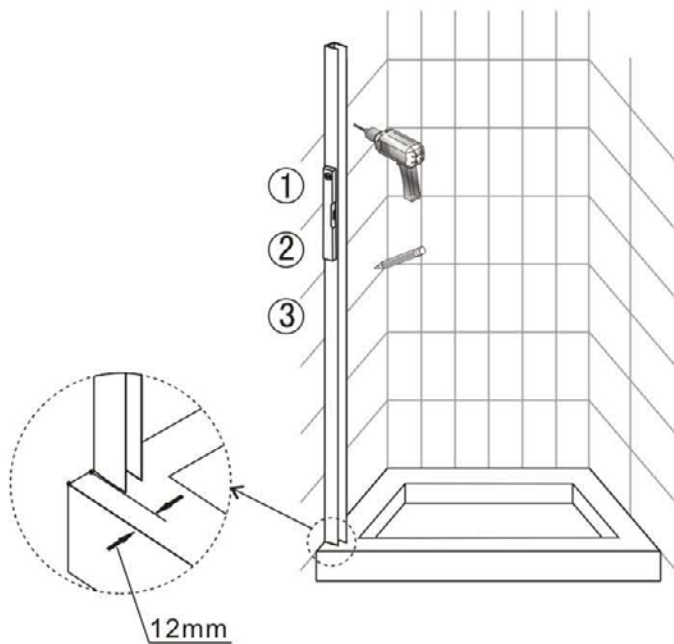


- [1] 5xWall Plugs
- [2] 1xWall Post
- [3] 3xScrews M4x8
- [4] 7xScrews M4x35
- [5] 3xScrew Cover Caps
- [6] 1xFixed Panel
- [7] 1xAluminum Seal

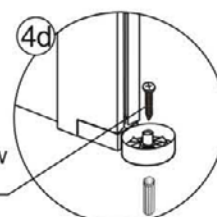
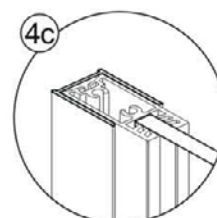
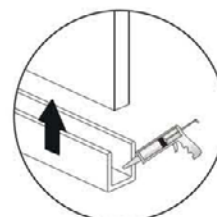
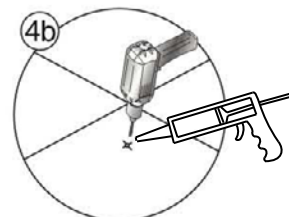
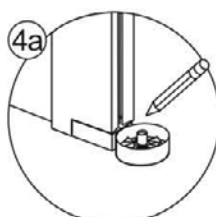
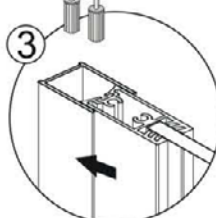
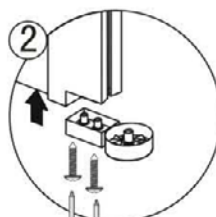
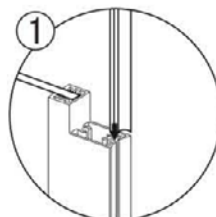
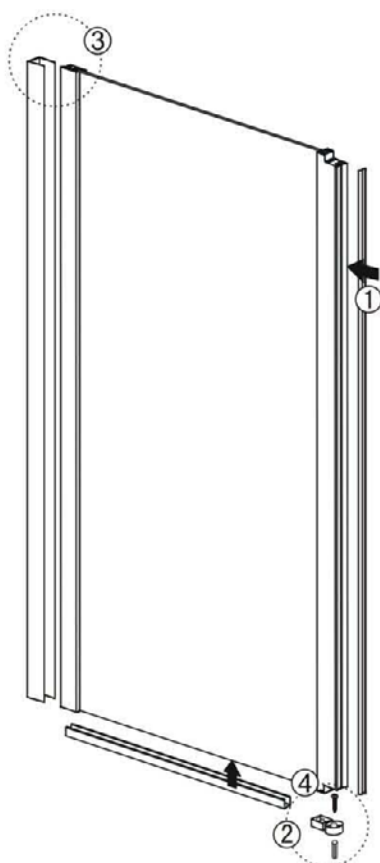
- [8] 1xFlat Screw M4x35
- [9] 1xWater Deflector
- [10] 1xWater Deflector
- [11] 1xDoor Panel
- [12] 2xHinges
- [13] 1xWasher
- [14] 1xBracket
- [15] 1xFlat Screw M4x35

◆ Installation Steps

Step 1

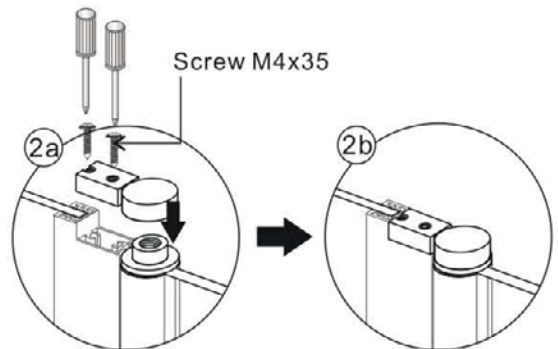
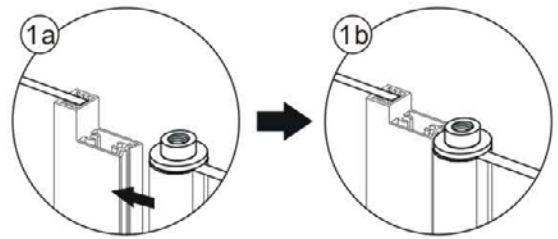
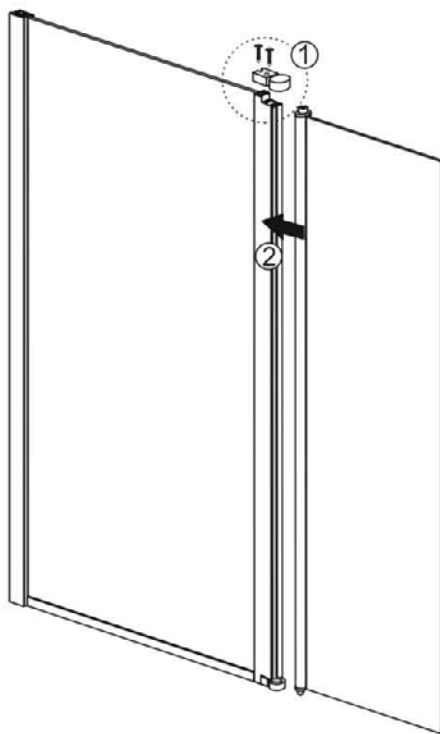


Step 2

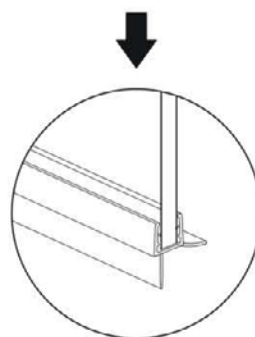
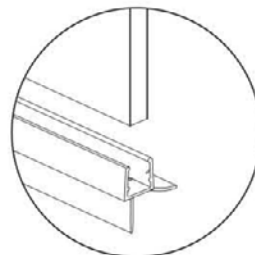
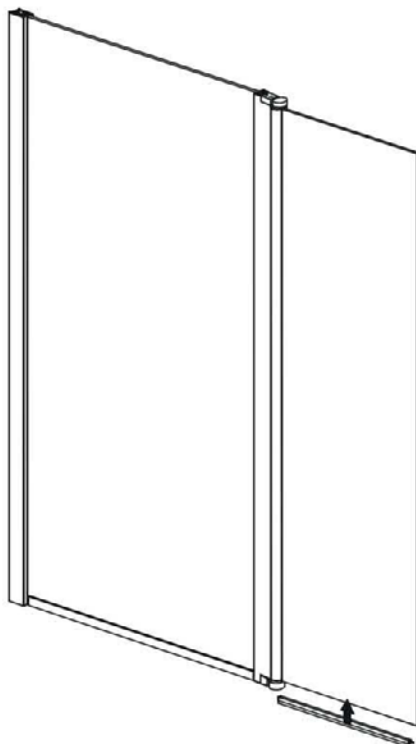


Flat Screw
M4x35

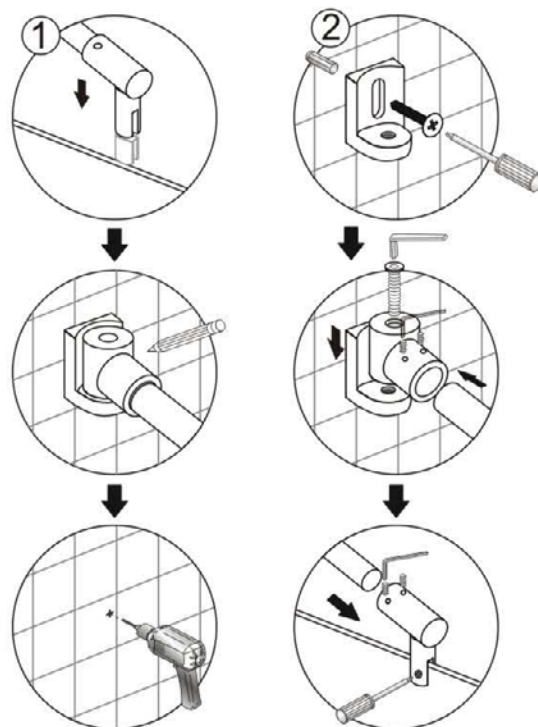
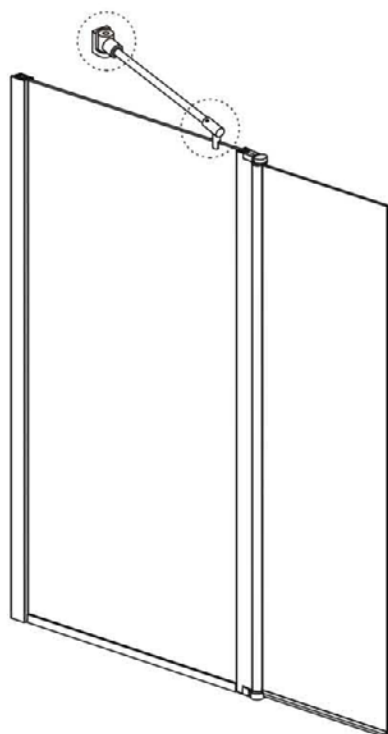
Step 3



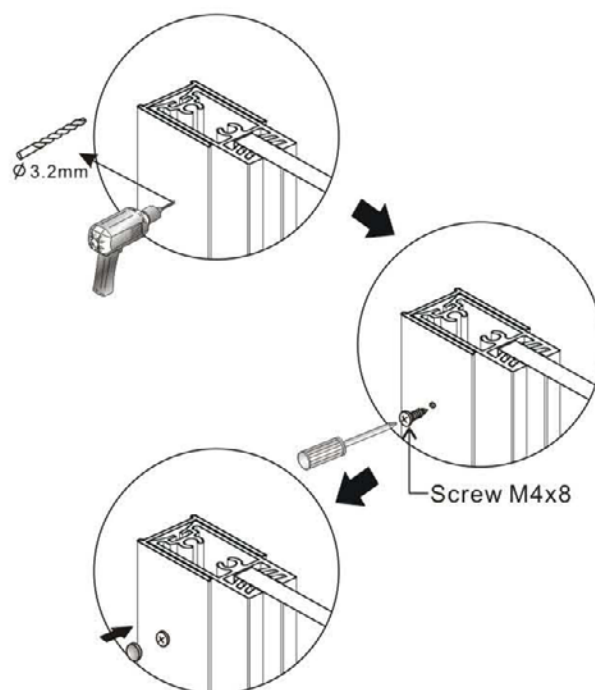
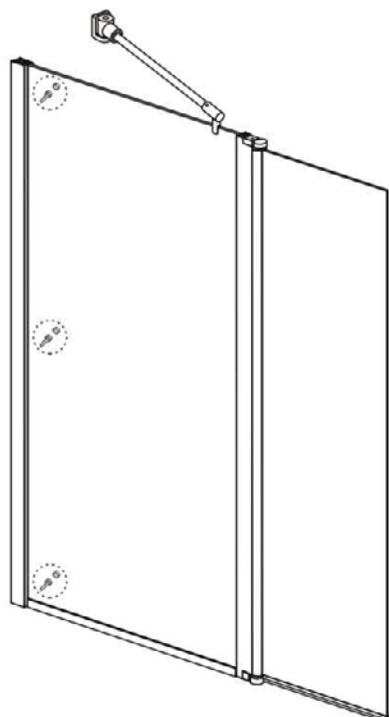
Step 4



Step 5

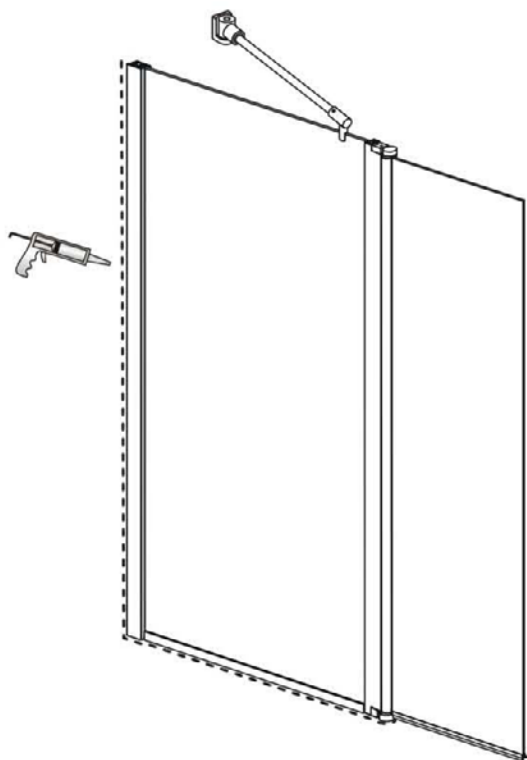


Step 6



View from inside

Step 7



Allow 24 hours for silicone to dry before use.