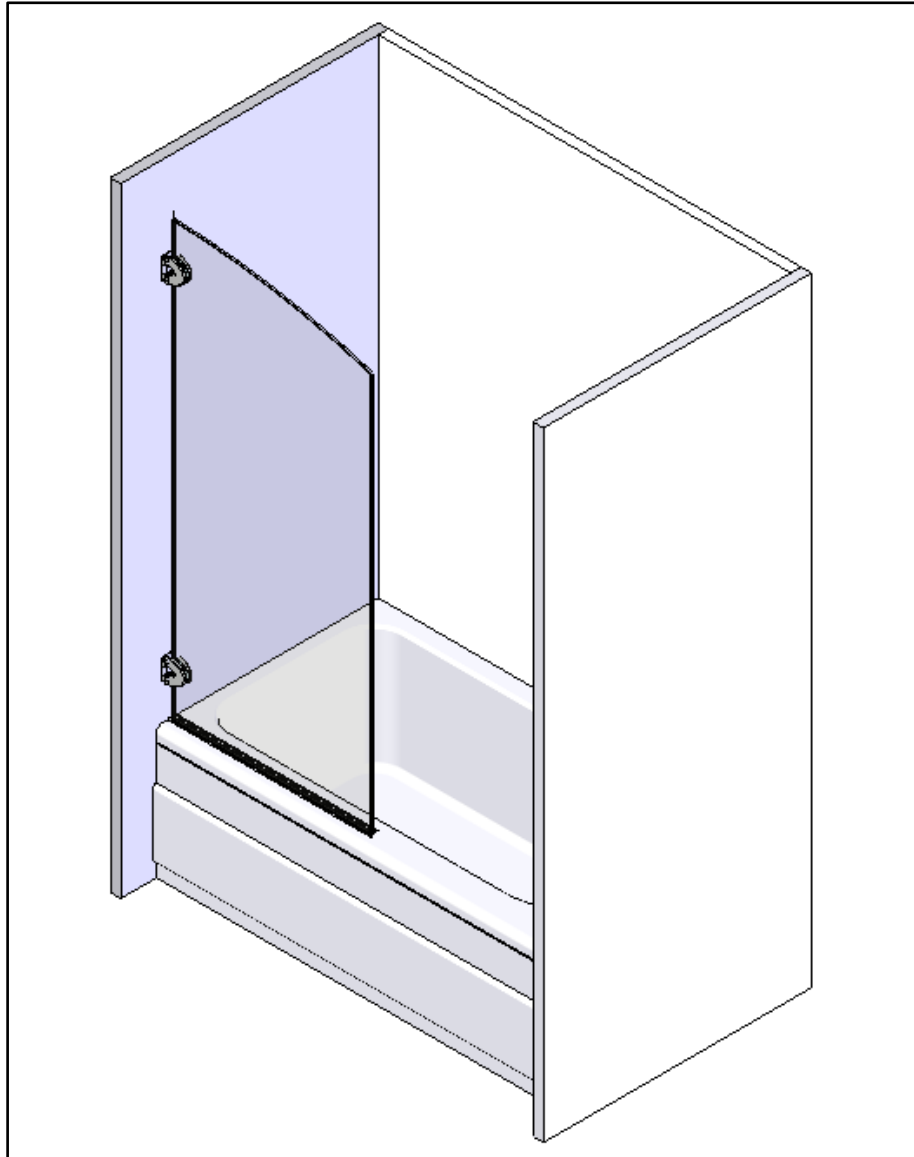


L-TS1X and L-TS1Z
INSTRUCTION MANUAL

ALUMAX
Lani Collection



● General Instruction

- Read carefully and completely before proceeding.
- This shower door should be installed by a recommended installer.
- It is recommended that you wear safety glasses at all times during installation.

● Installation over ceramic tiles

- Silicone should be used to seal the line where ceramic tiles meets the side panels.
- If your shower door is to be installed over ceramic tiles, tiles should be completely under both wall jambs.
- A threshold made of aluminum is included and should be siliconed underneath the door panels in order to ensure optimal leak protection.

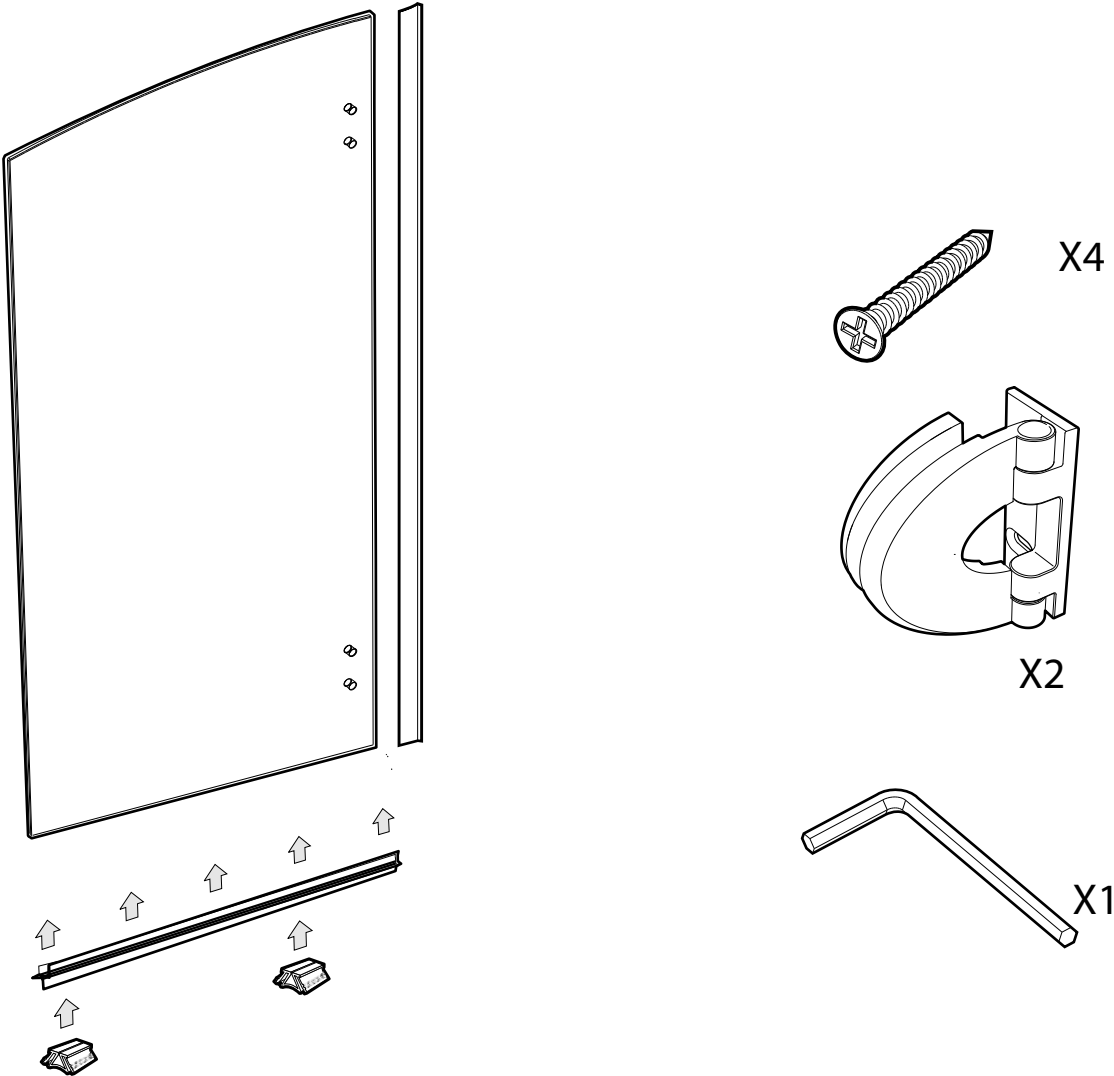
● Notice

- Caulking: no sealant is required inside the shower.
- All models are equipped with transparent sealing gaskets and magnetic closure gaskets.
- Threshold for leak protection is included and recommended on base without lip and ceramic base tile.

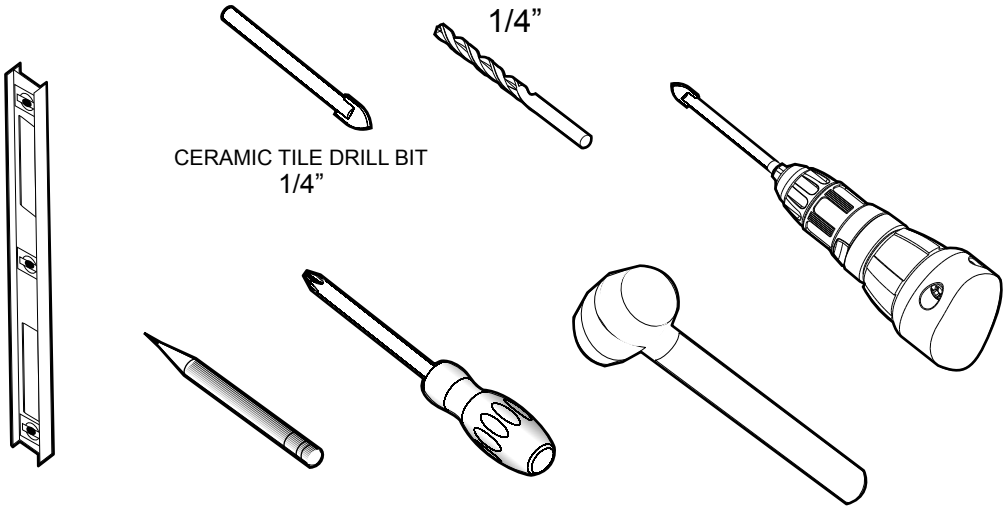
● Care for your frameless shower door

- Never use scouring powder pads or sharp instruments on metal work or glass panels.
- An occasional wiping down with a mild detergent diluted in water is all that is needed to keep the panels and aluminum parts looking new.

Product specifications are subject to change without notice.



TOOLS REQUIRED

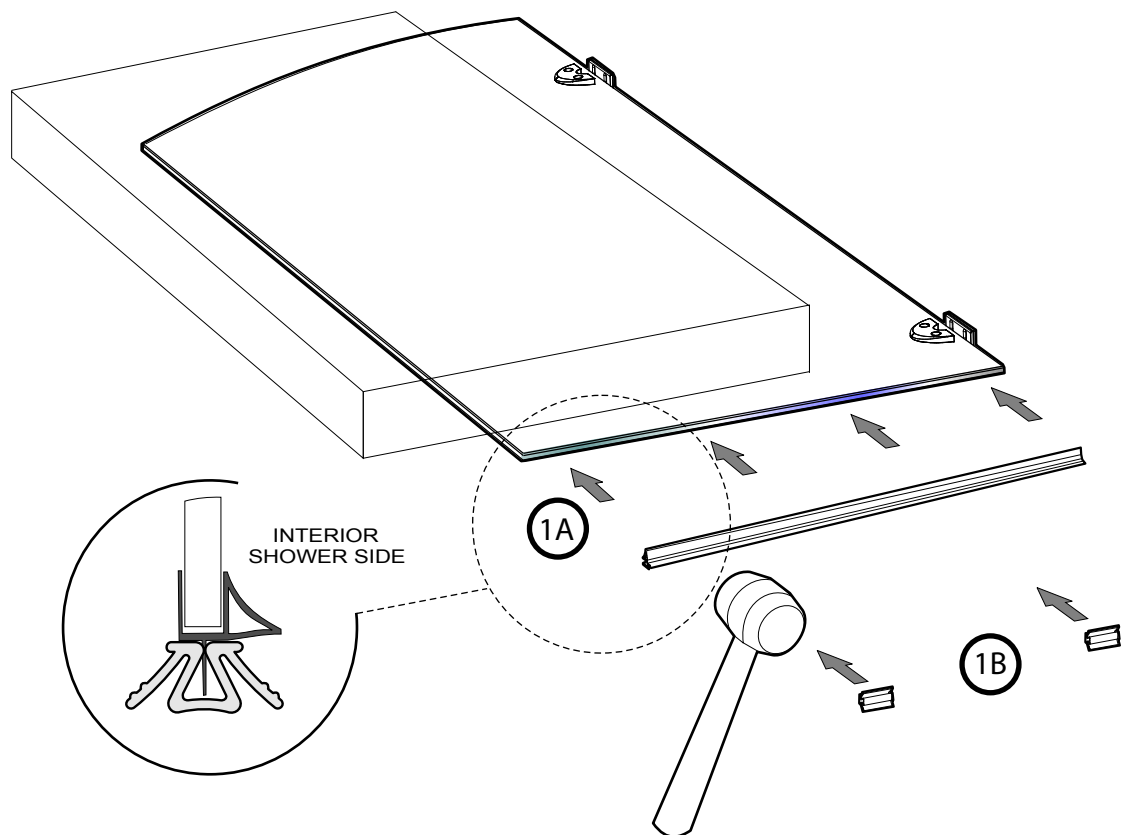




CHOOSE LEFT OR RIGHT
SIDE OPENING

Step

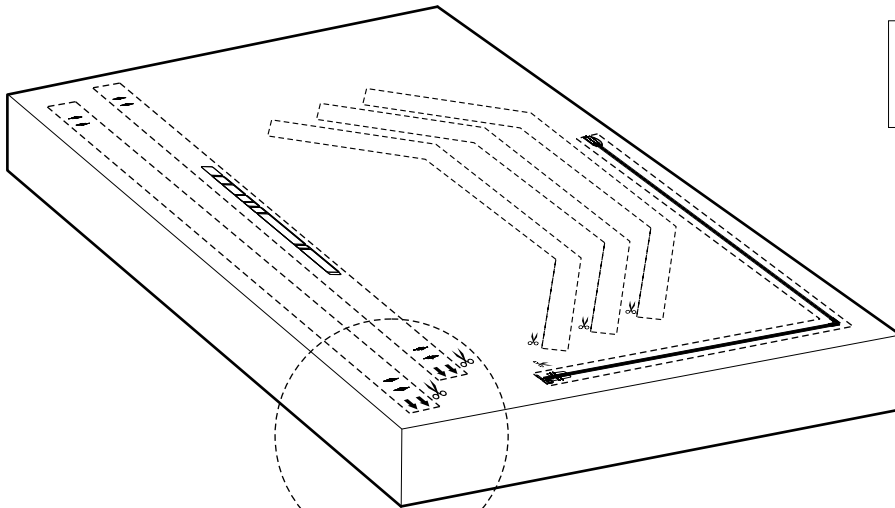
1 BOTTOM DOOR GASKET (1) + LEVELING BLOCKS (2)



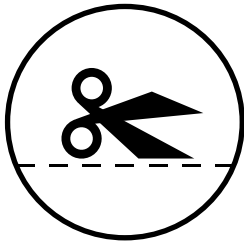
WARNING

Wall-mounted hinge must be supported and fastened into a stud framing.

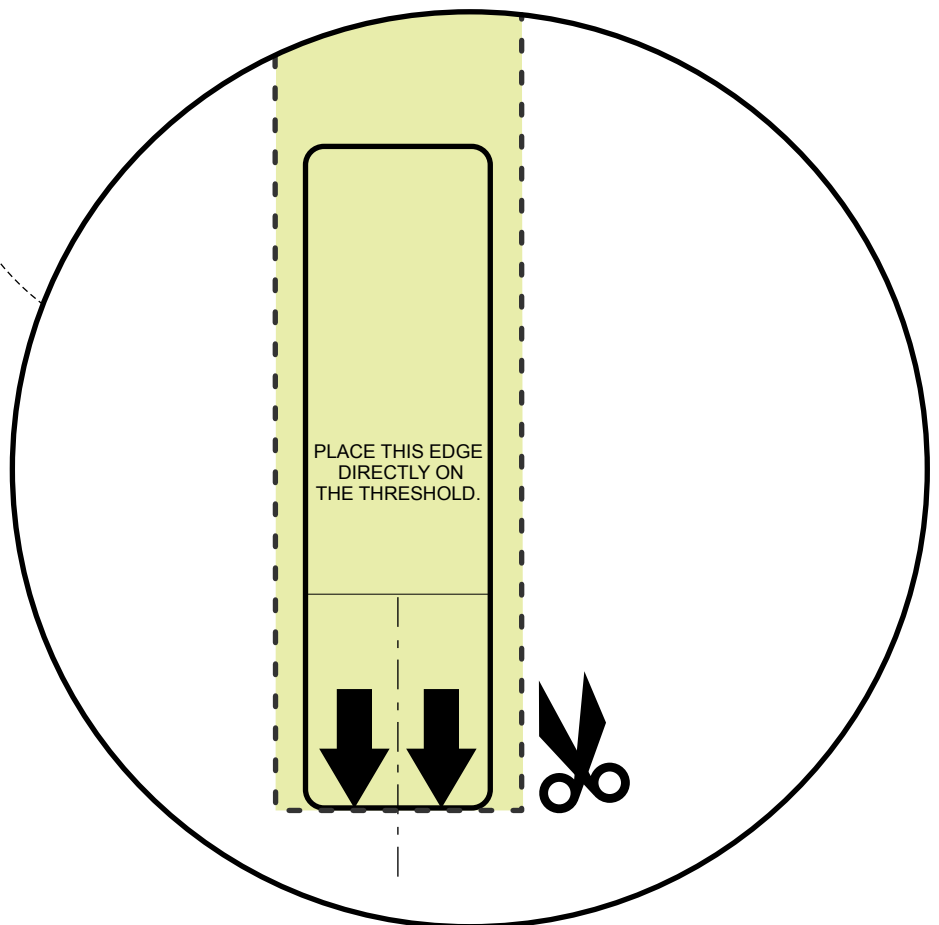
Step
2 CARTON BOX

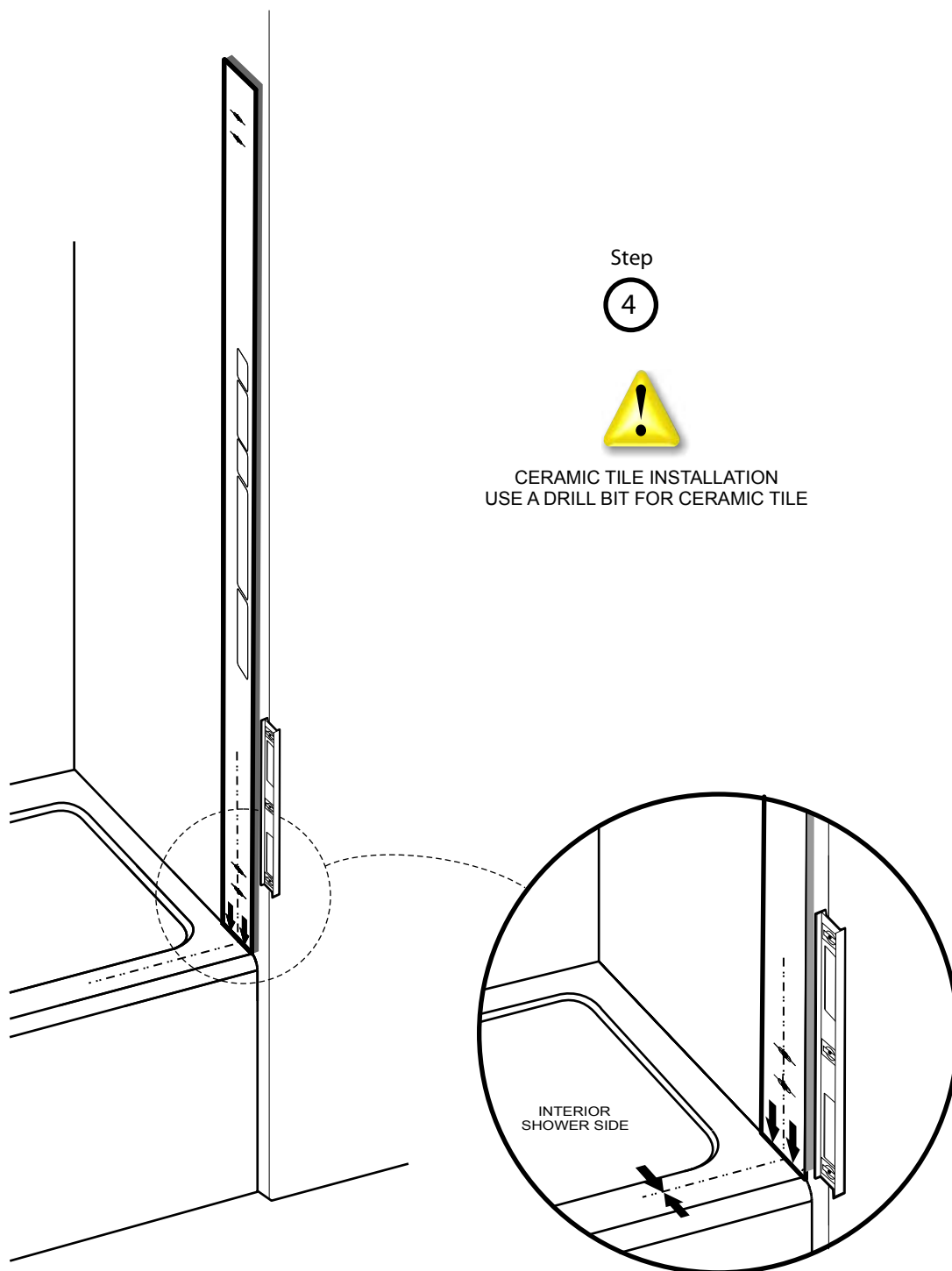


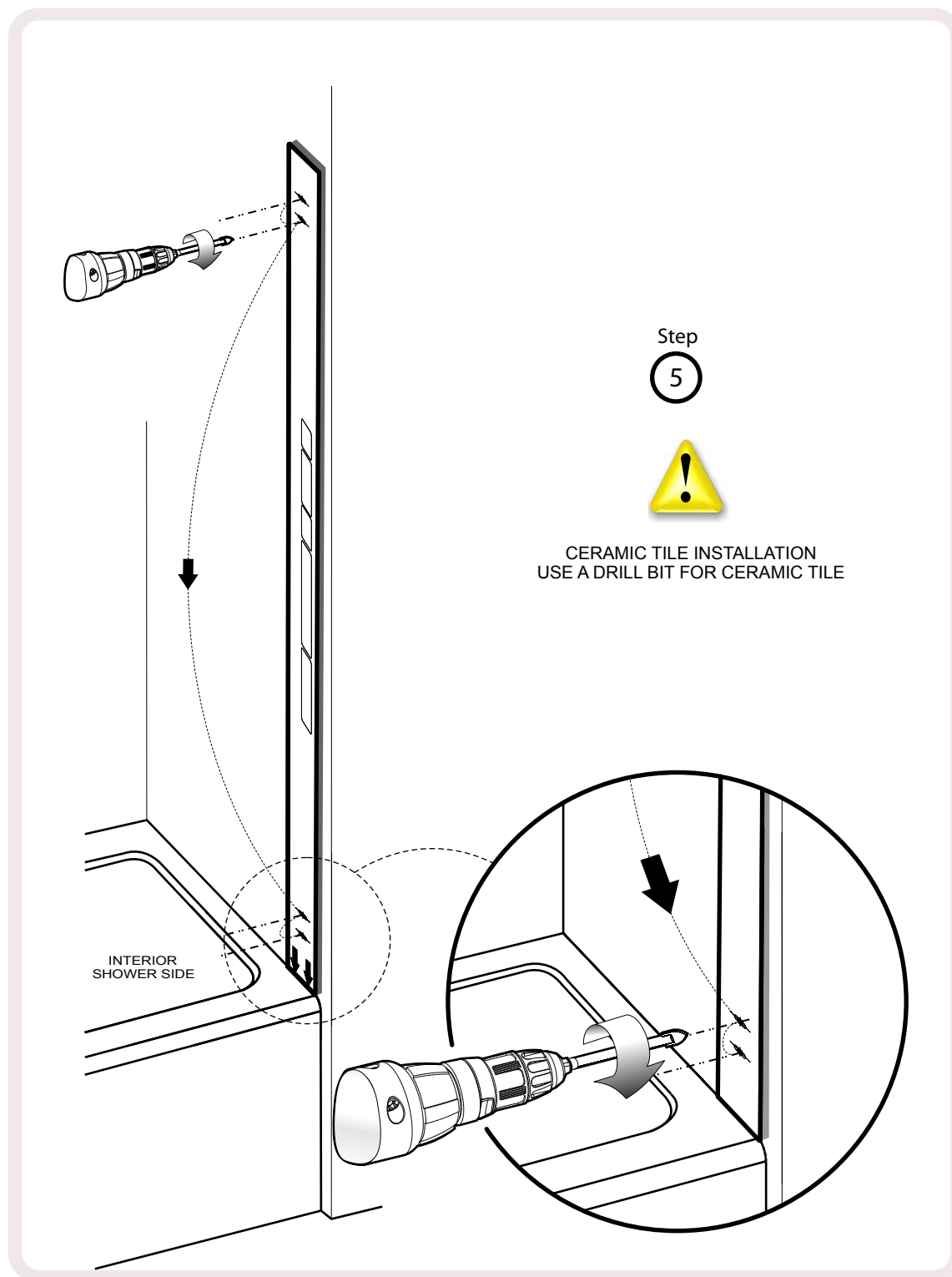
NOTICE
CUT-OUT APPROPRIATE
TEMPLATE ON THE BACK
OF THE CARTON BOX BEFORE
SHOWER INSTALLATION



Step
3 TEMPLATE







WARNING

Wall-mounted hinge must be supported and fastened into a stud framing.

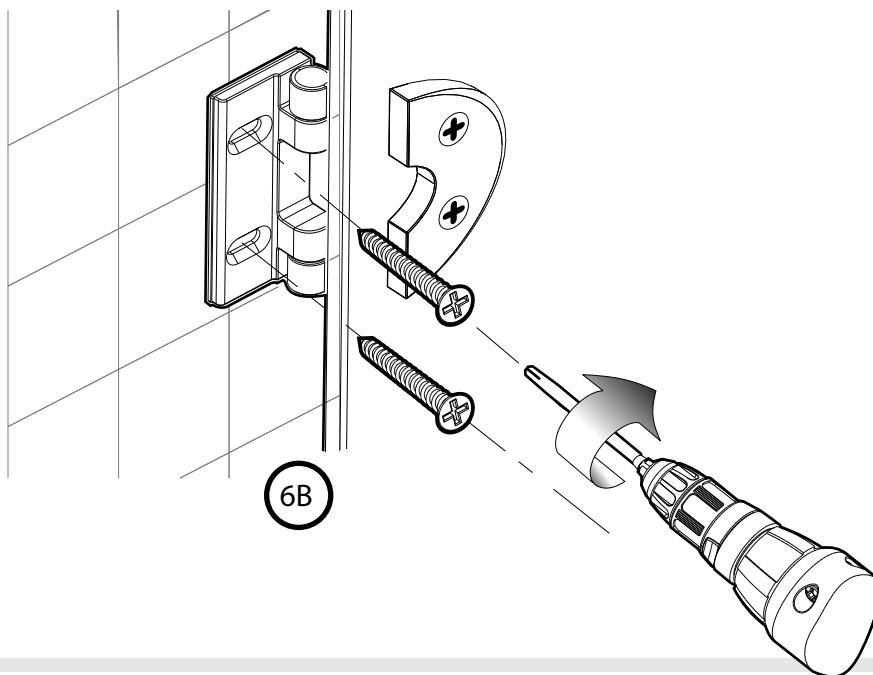
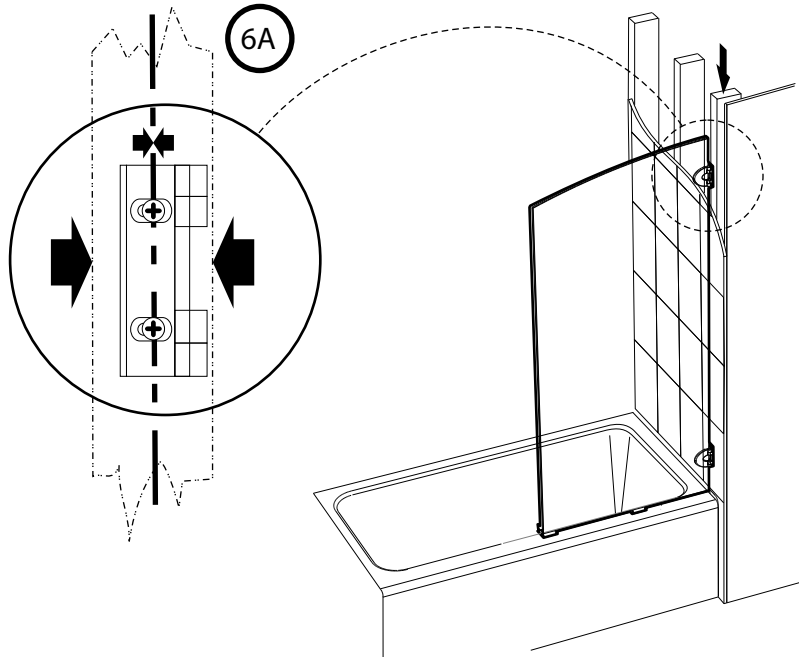


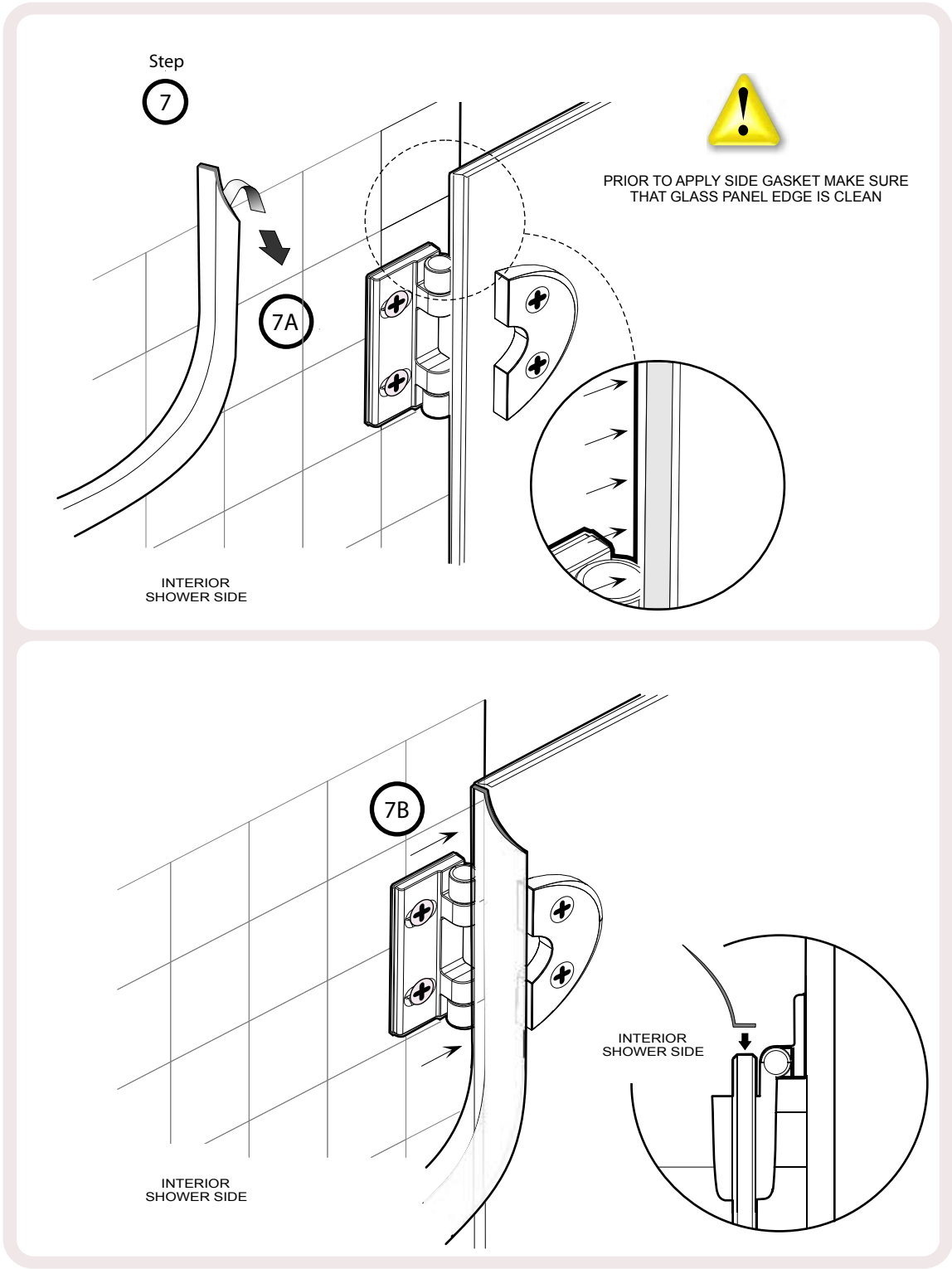
WARNING

Wall-mounted hinge must be supported and fastened into a stud framing.

Step

6







ONLY FOR MODEL L-TS1X

Step

7

