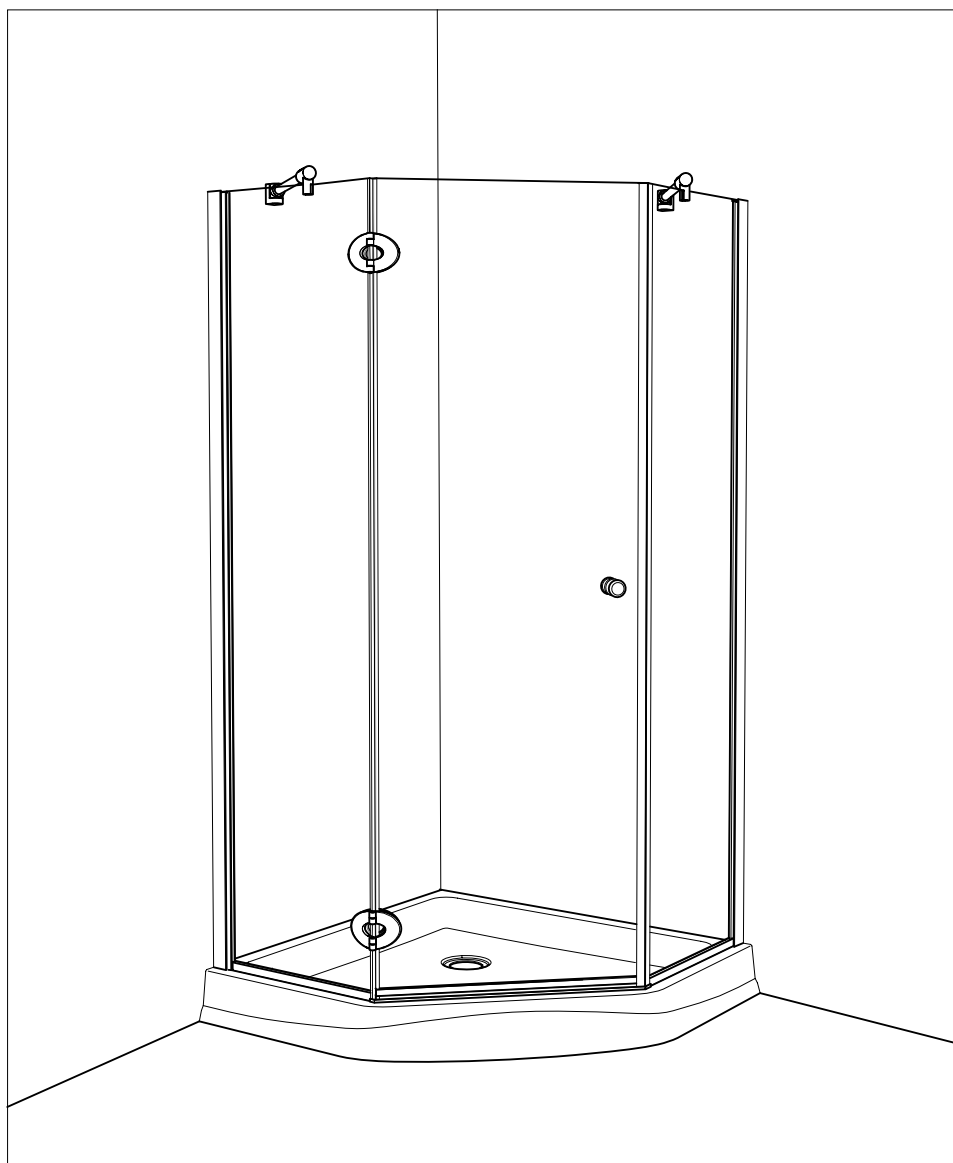


Neo Angle Shower door



08.10

Please keep this manual and product code number for future reference and replacement parts ordering if necessary.

GENERAL INSTRUCTIONS

- *Read this manual carefully and completely before proceeding.*
- *It is recommended that you wear safety glasses at all times during the installation.*

INSTALLATION OVER CERAMIC TILES

- *Silicone should be used to seal the gap where the ceramic tiles meet the fixed panel.*
- *If your shower door is to be installed over ceramic tiles, the tiles should lay completely under the wall jamb.*

NOTICE

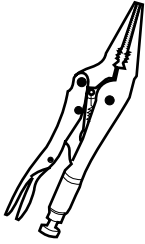
- *Caulking: no sealant is required inside the shower. Unless otherwise stated.*
- *Some models are equipped with clear sealing gaskets.*

CARE FOR YOUR SHOWER DOOR

- *Never use scouring powder pads or sharp instruments on metal pieces or glass panels. An occasional wiping down with a mild soap diluted in water is all that is needed to keep the panels and aluminum parts looking new.*
- *We recommend wiping the glass panels with a squeegee after each use.*

Product specifications are subject to change without notice.

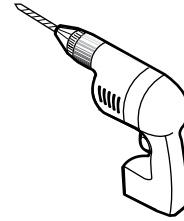
TOOLS AND MATERIAL REQUIRED



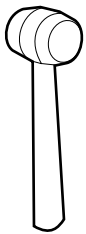
LONG NOSE LOCKING PLIER (X2)



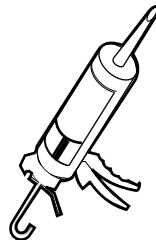
SCREWDRIVERS



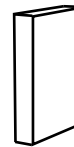
DRILL



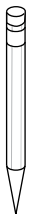
MALLET



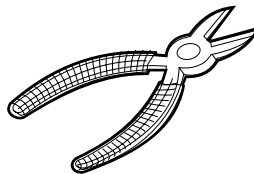
SILICONE



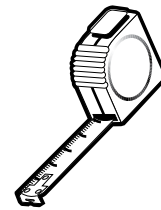
BLOCK



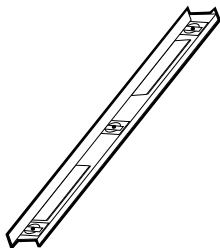
PENCIL



CUTTING PLIER



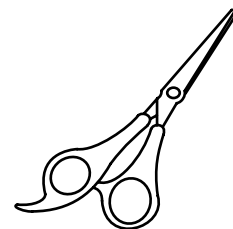
TAPE MEASURE



LEVEL



1/4" & 1/8" DRILL BITS



SCISSOR

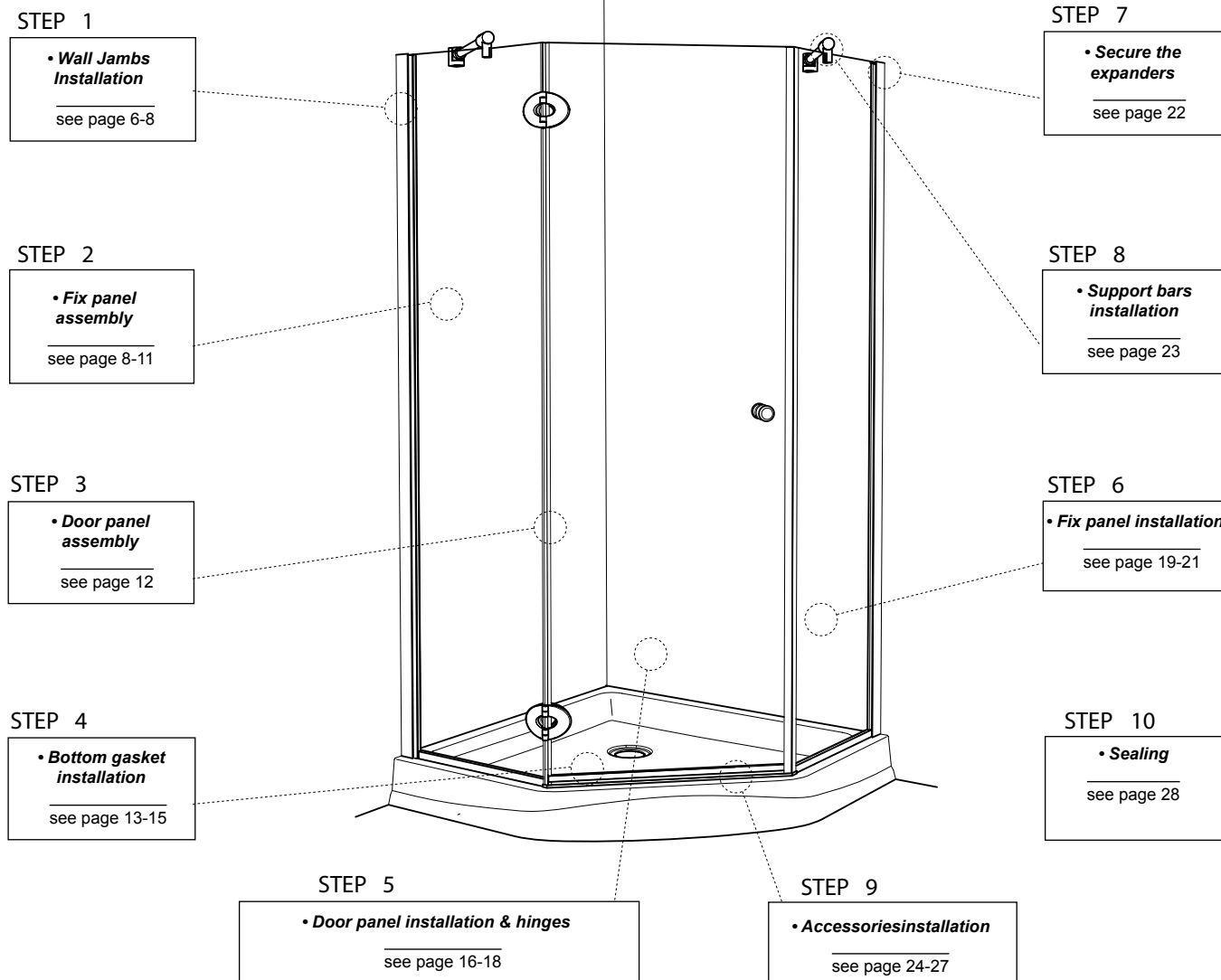


2 PEOPLE REQUIRED

* To install the shower door on ceramic tiles, use a 1/4" drill bit for ceramic tiles

INSTALLATION OF COMPONENTS

FOLLOW INSTALLATION STEPS REQUIRED FOR THE MODEL

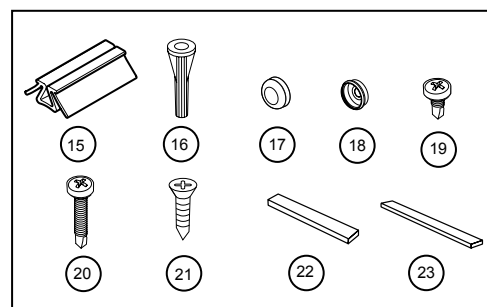


PARTS LISTING

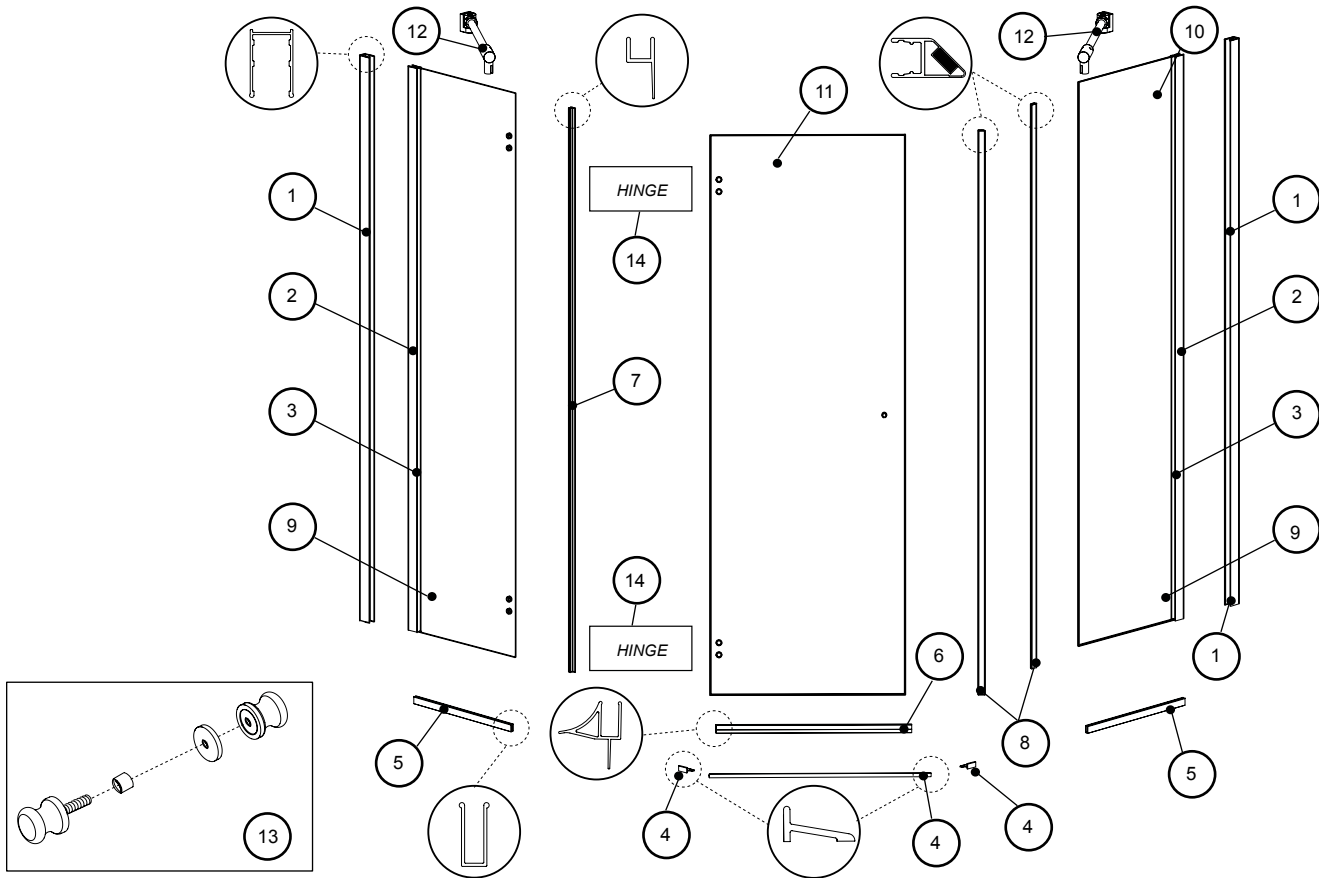
HINGES

Q	M	T	R

HARDWARE



PARTS LISTING



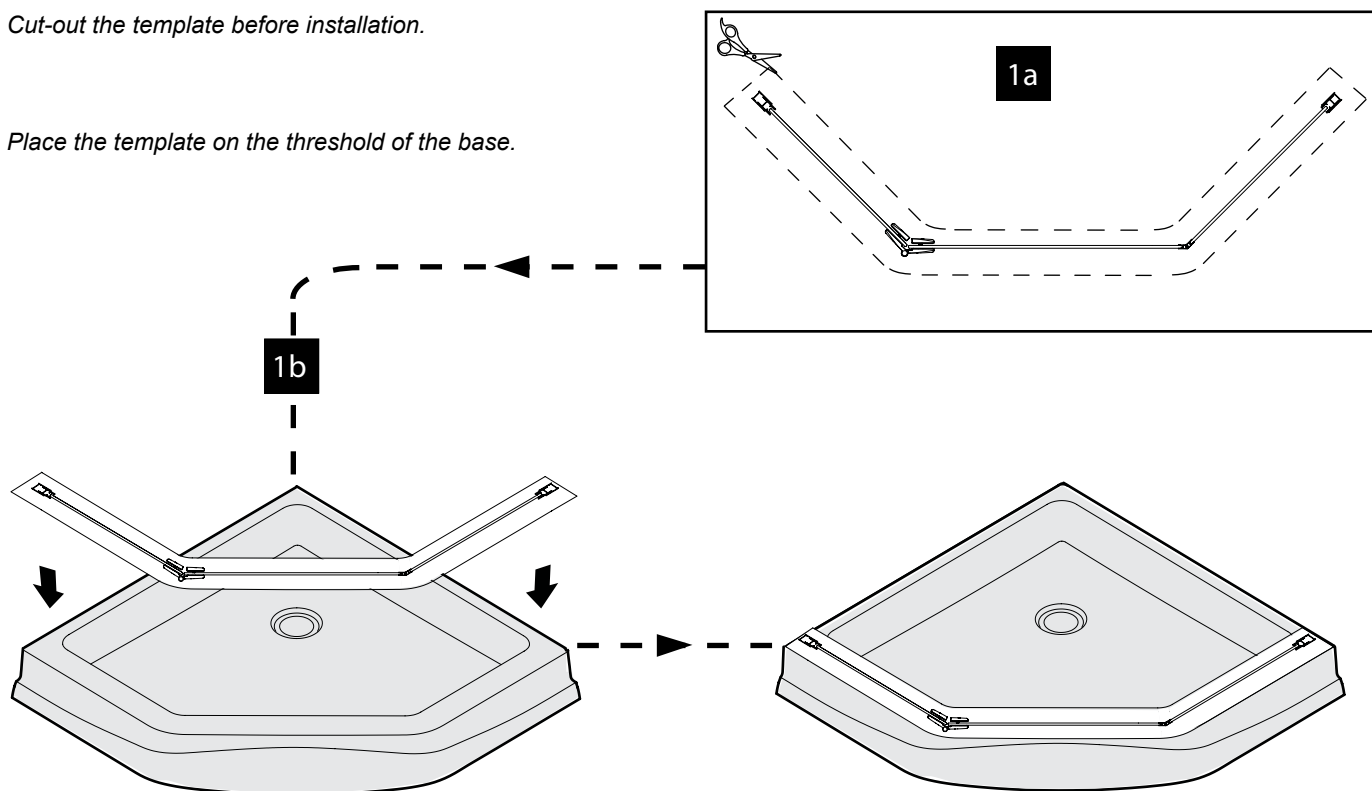
ITEM	PARTS	QTY
1	WALL JAMB (REGULAR PUNCH)	2
2	EXPANDER	2
3	GASKET	2
4	ALUMINUM THRESHOLD	1
5	ALUMINUM "U" CHANNEL	2
6	BOTTOM GASKET	1
7	SIDE PANEL GASKET	1
8	MAGNETIC GASKET	2
9	HINGED FIXED PANEL	1
10	SIDE PANEL	1
11	DOOR PANEL	1
12	SUPPORT BAR	2
13	KNOB	1
14	HINGE	2
ITEM	PARTS	QTY
15	SPACING BLOCKS	2
16	WALL PLUG	7
17	SCREW CAP	7
18	BACK SCREW CAP	7
19	PAN SELF DRILLING SCREW# 8- 3/8"	6
20	PAN SELF-DRILLING SCREW # 8- 1-1/4"	6
21	FLAT HEAD SCREW # 6 - 1-1/4"	2
22	CLEAR SETTING BLOCK	4
23	CLEAR SETTING BLOCK	4

1

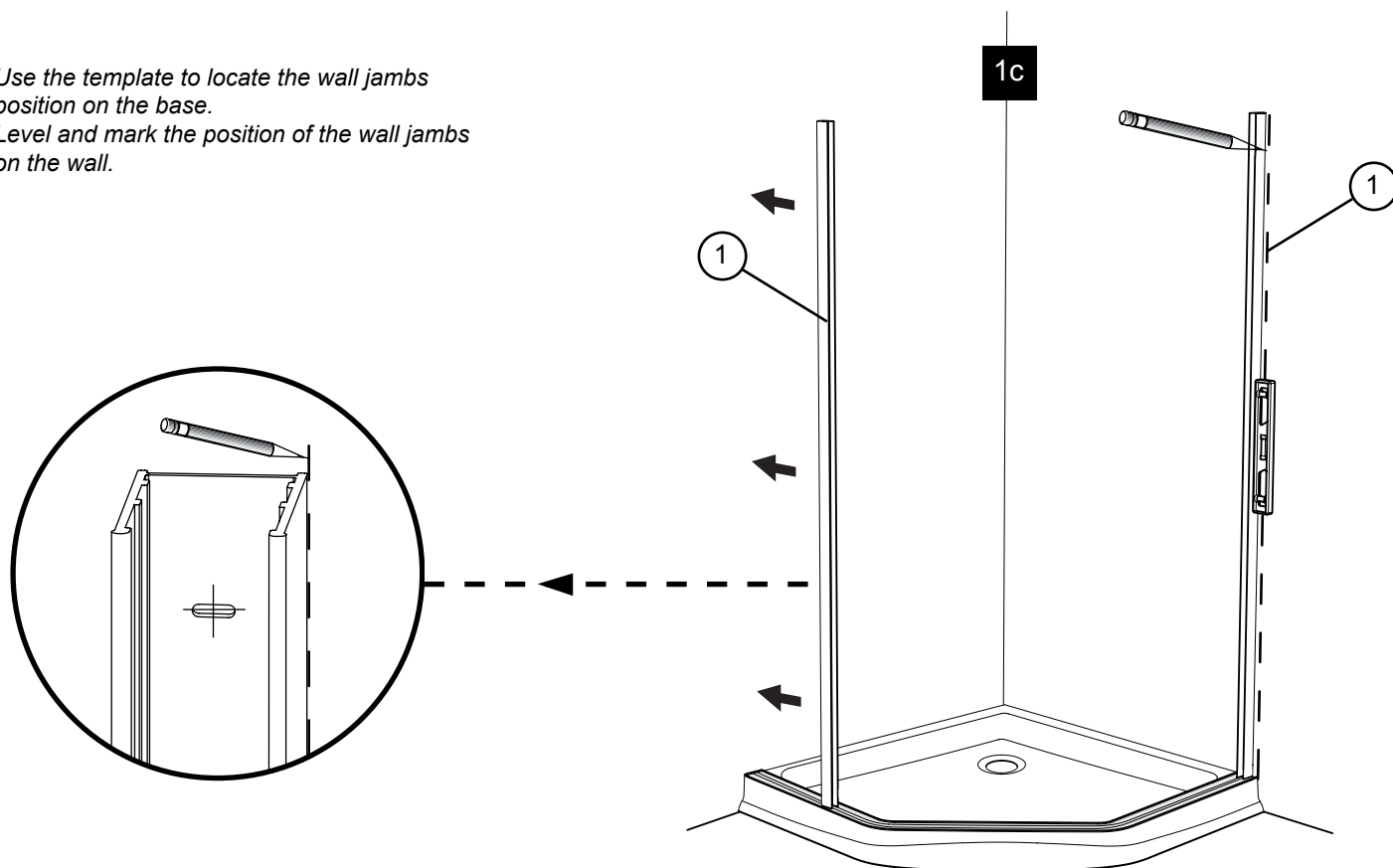
WALL JAMBS INSTALLATION

1a. Cut-out the template before installation.

1b. Place the template on the threshold of the base.



1c. Use the template to locate the wall jambs position on the base.
Level and mark the position of the wall jambs on the wall.



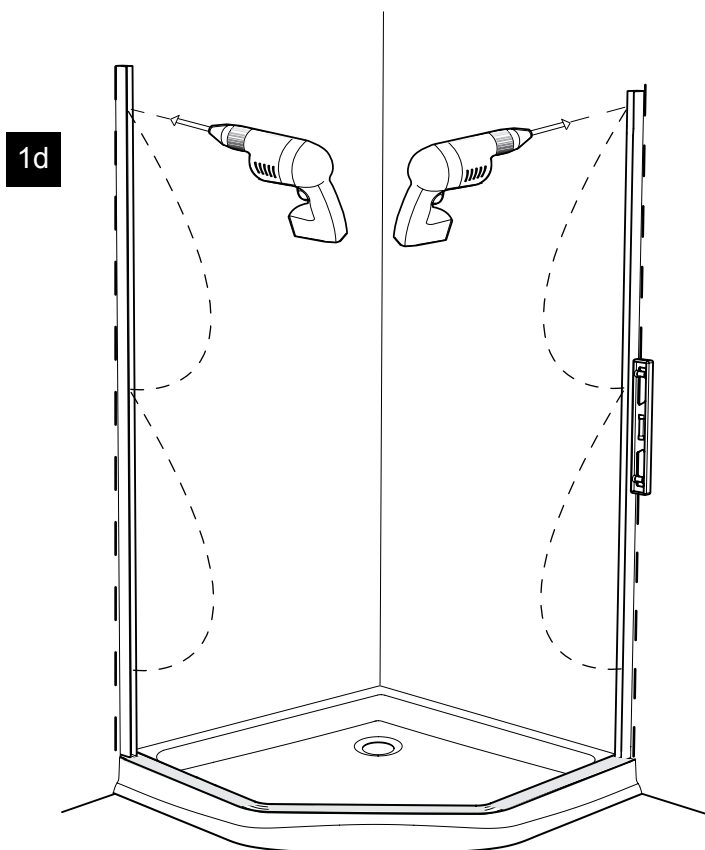
1 WALL JAMBS INSTALLATION (CONTINUED)

1d. *Drill holes using Ø1/8" drill bit and use the wall jambs holes as reference.*

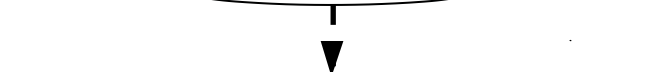
1e. *Remove the wall jambs.*

1f. *Insert one drop of silicone in each hole in the wall before inserting the wall plug.*

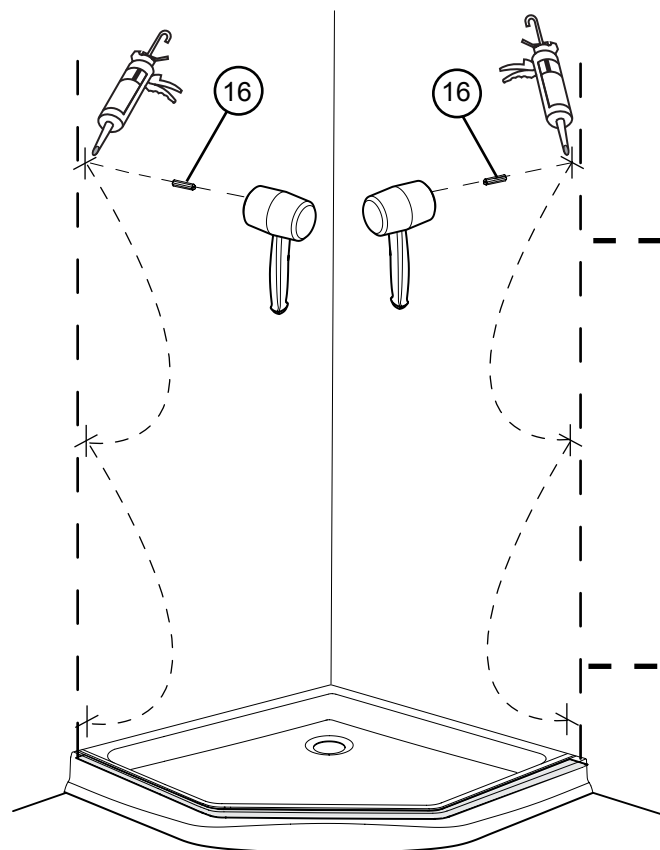
1g. *Before replacing the wall jambs on the base remove the template and add a drop of silicone on the bottom back of the wall jambs.*



1d

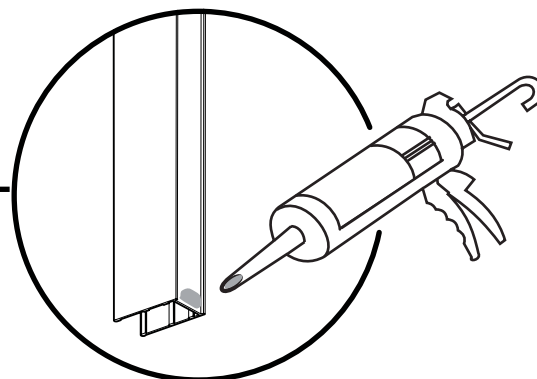
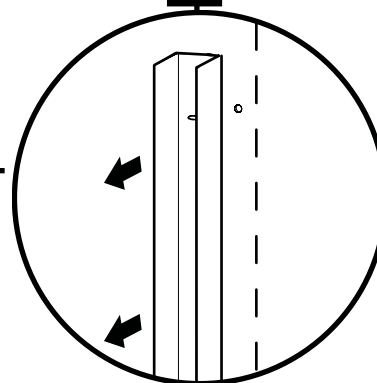


1e



1f

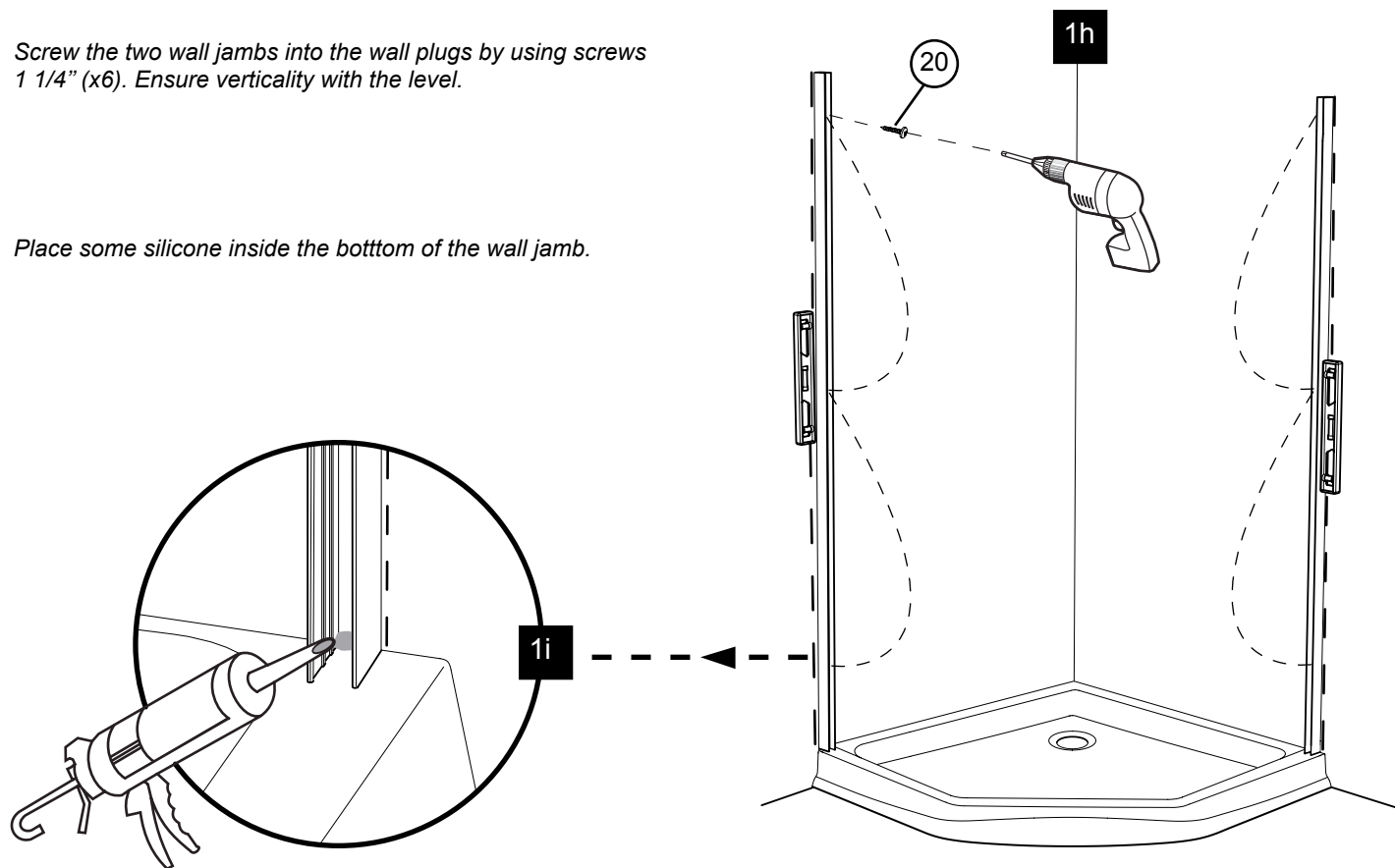
1g



1 WALL JAMBS INSTALLATION (CONTINUED)

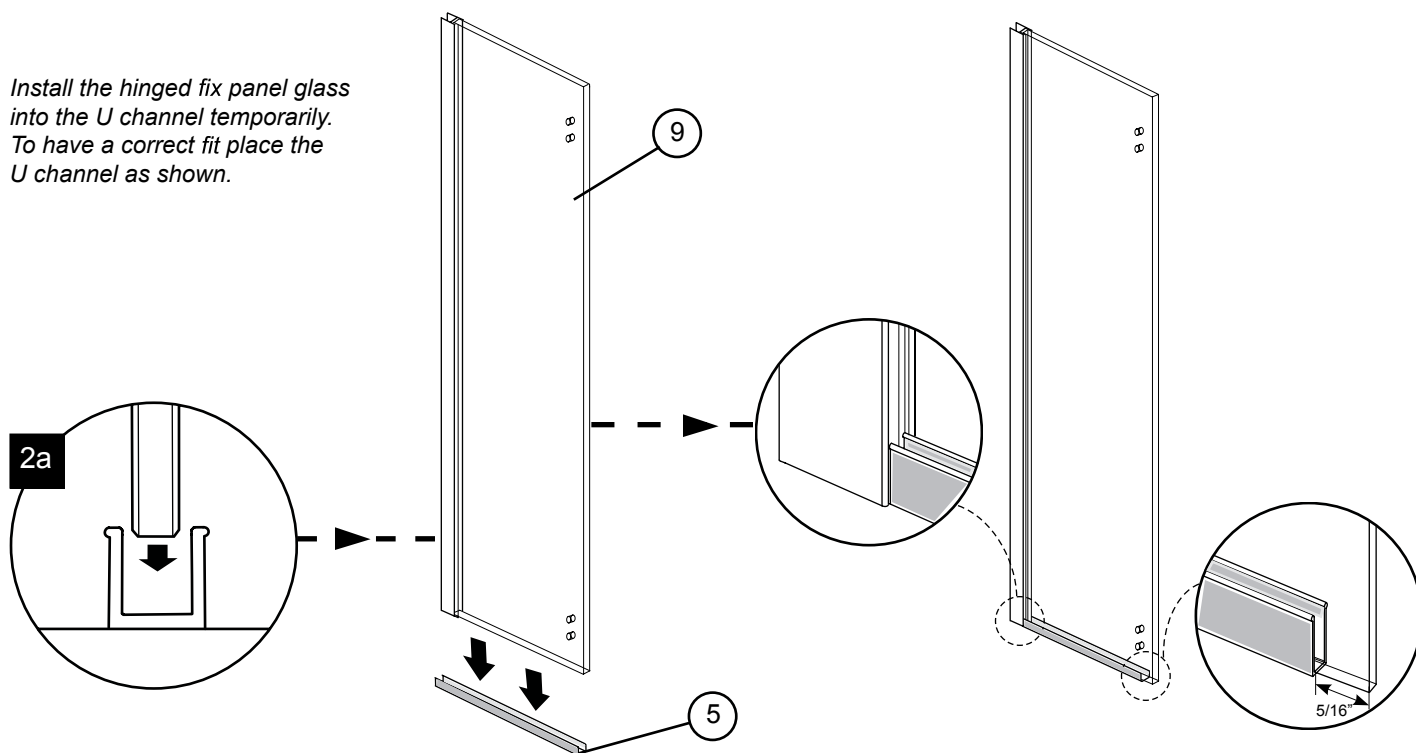
1h. Screw the two wall jambs into the wall plugs by using screws 1 1/4" (x6). Ensure verticality with the level.

1i. Place some silicone inside the bottom of the wall jamb.

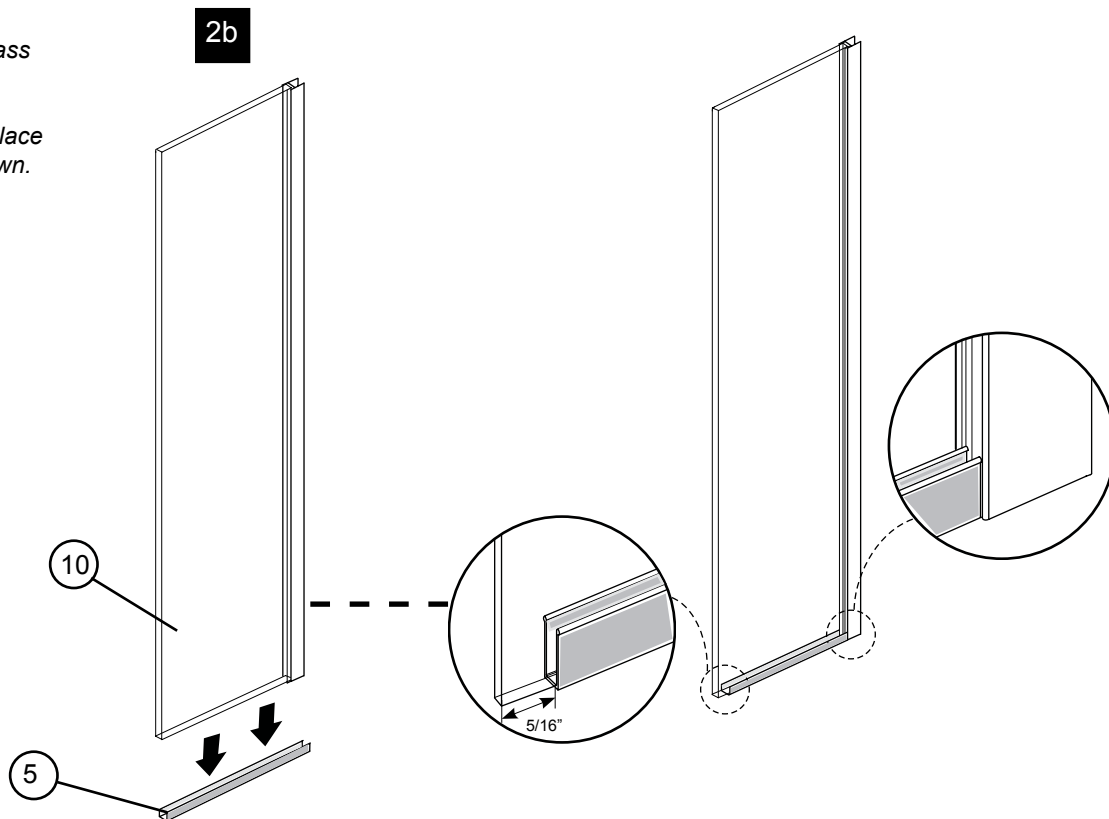


2 FIX PANEL ASSEMBLY

2a. Install the hinged fix panel glass into the U channel temporarily. To have a correct fit place the U channel as shown.

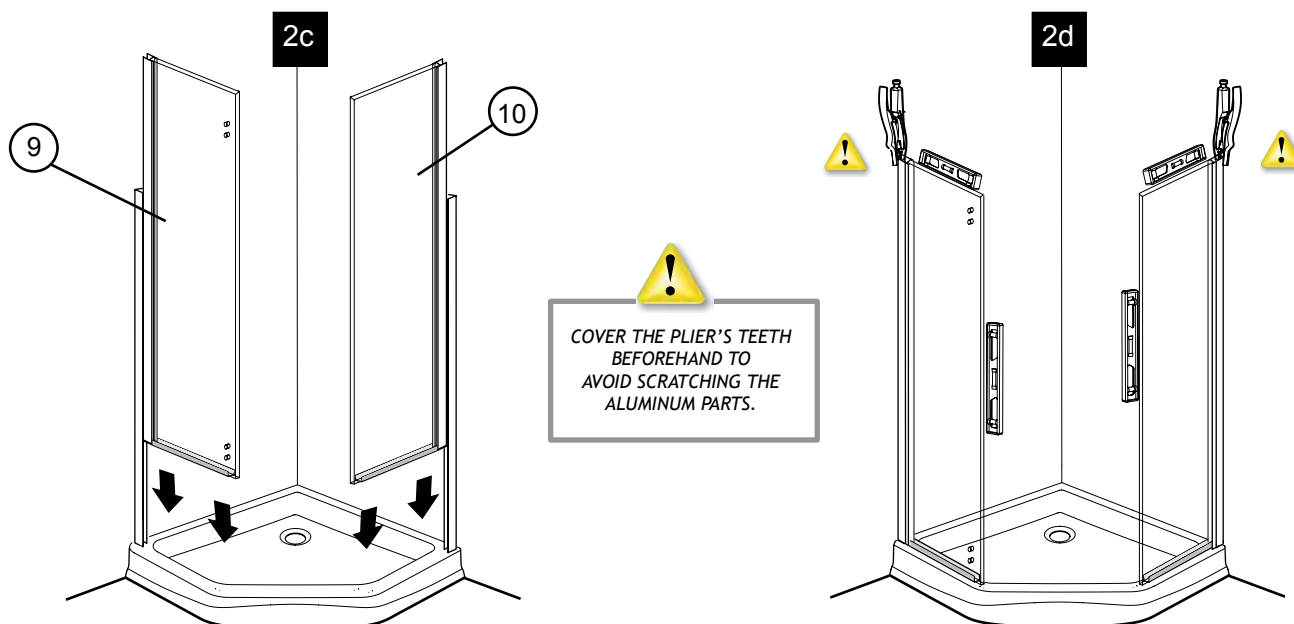


- 2b. *Install the fix panel glass into the U channel temporarily. To have a correct fit place the U channel as shown.*

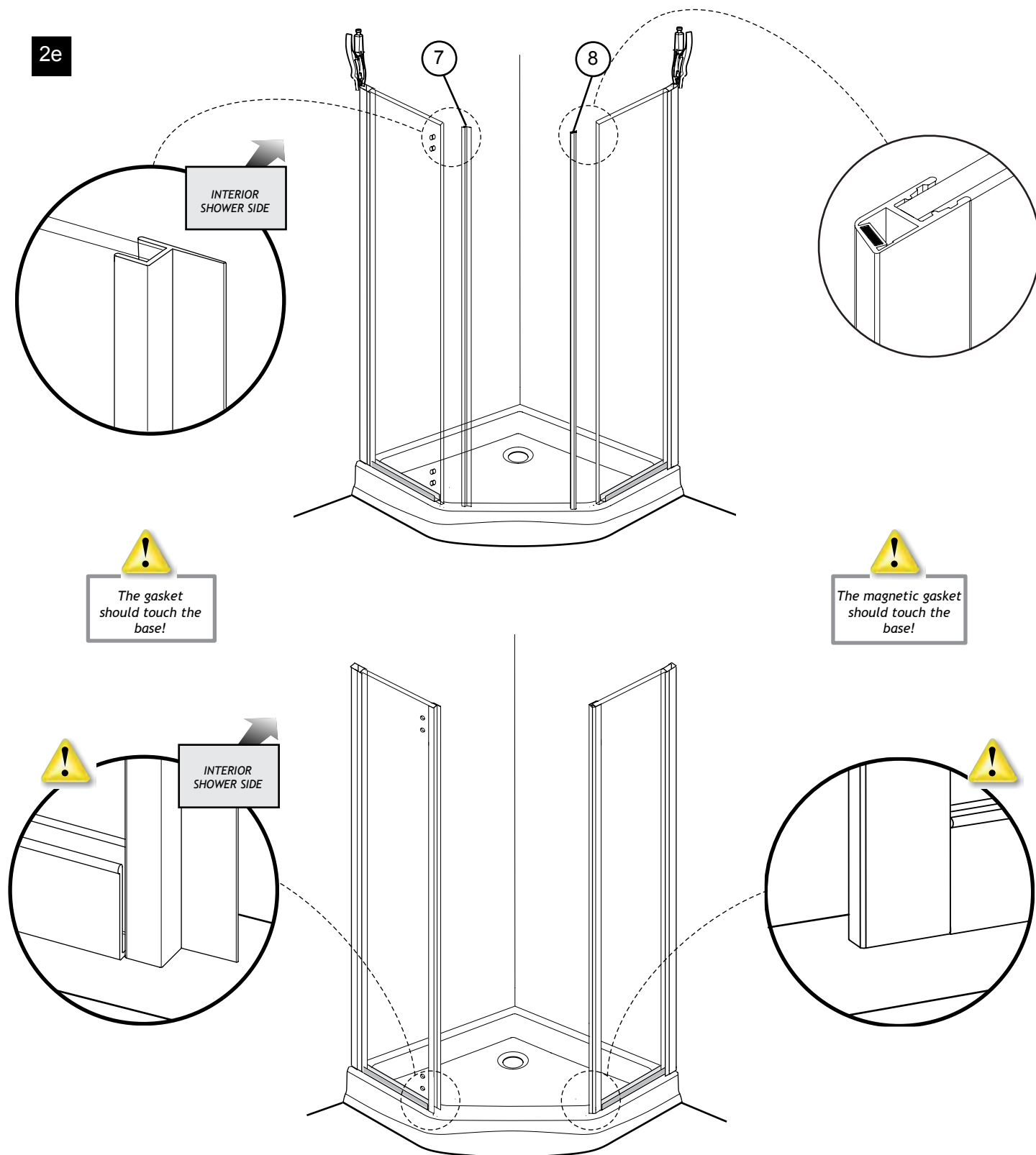


- 2c. *Slide temporarily the two fix panel assemblies into the two wall jambs .*

- 2d. *Level the glass panels and lock the position by clamping the wall jambs and expander with pliers.*



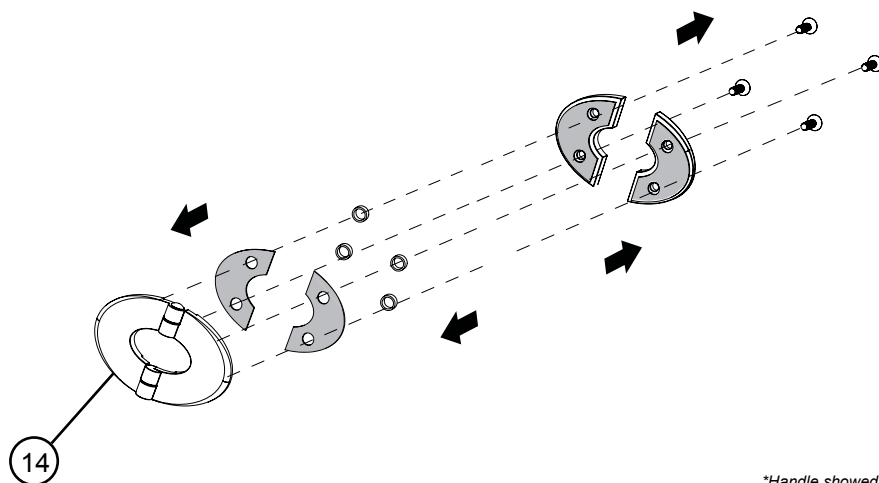
2e. Use a mallet to install the side and magnetic gasket son the fix panels.



2

2f. Unscrew the rear side of the 4 hinges as illustrated.

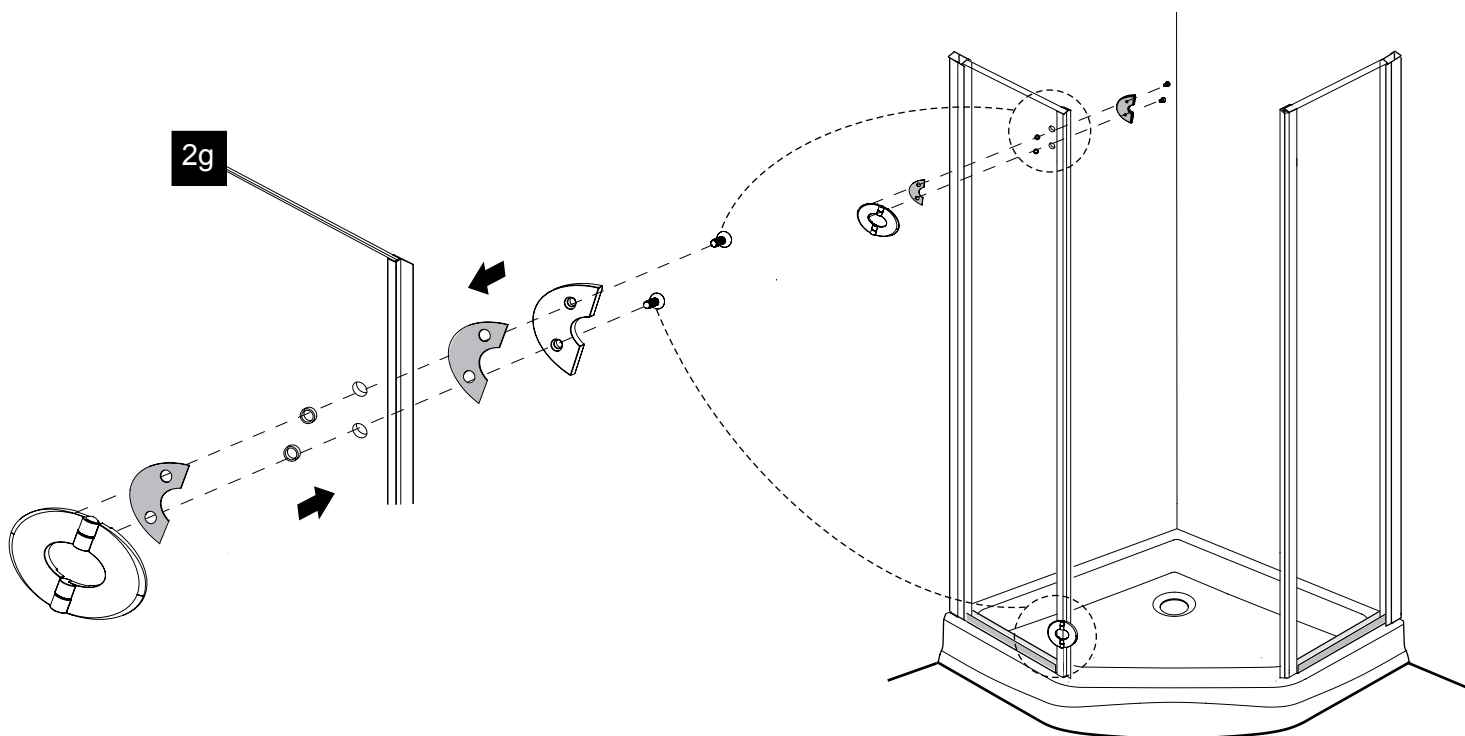
2f



*Handle showed is model (Q)

2g. Fasten the front side and one of the rear side component of the hinges to the fix panel as illustrated.
Use the provided hex. Key.

2g

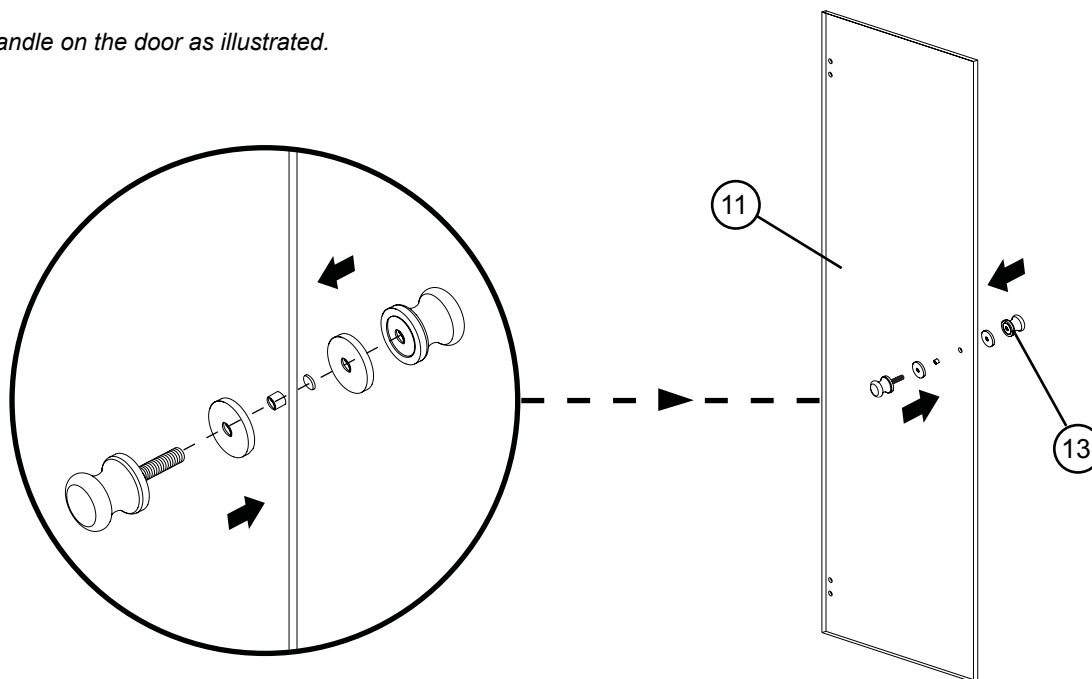


3

DOOR PANEL ASSEMBLY

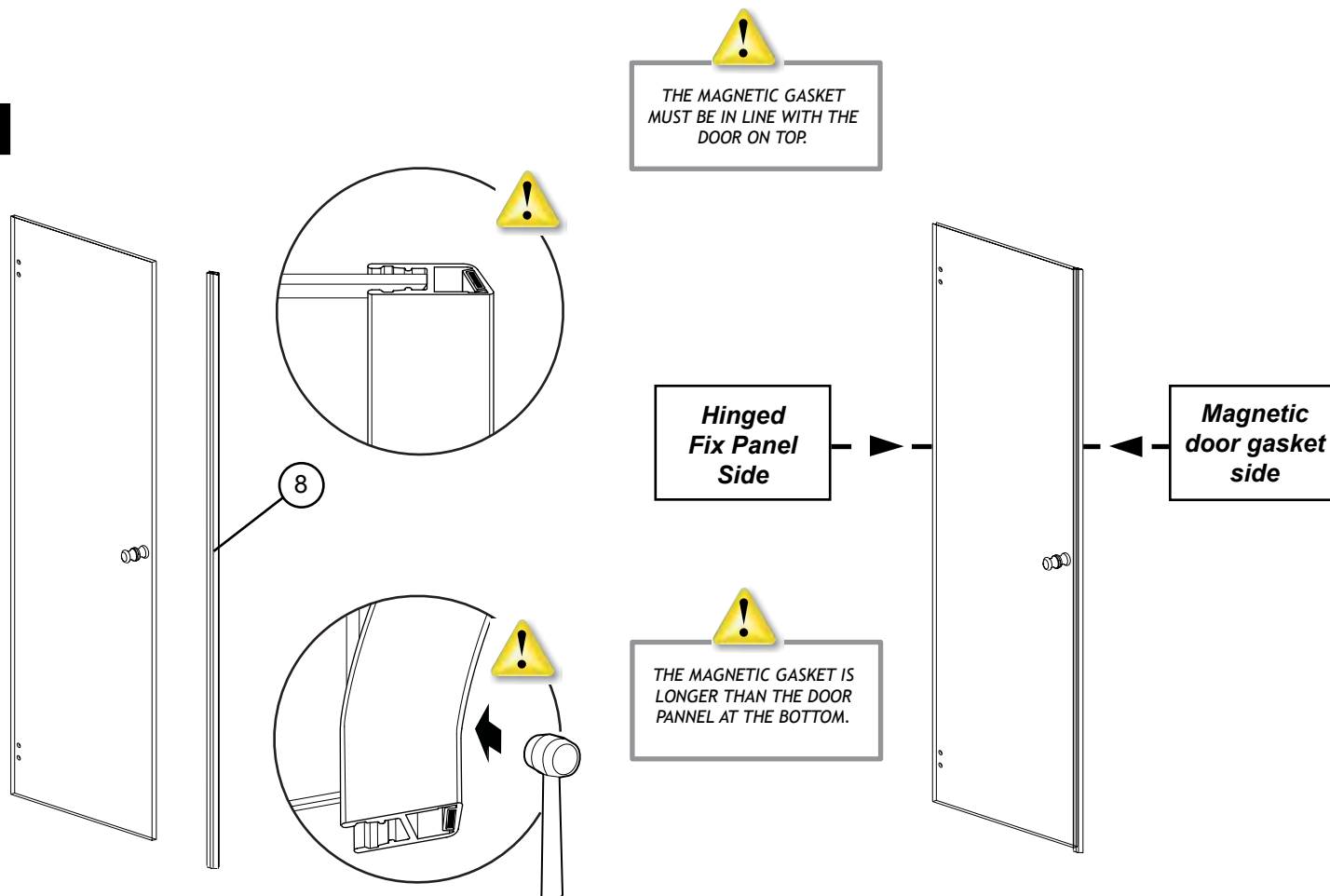
3a. Screw the handle on the door as illustrated.

3a



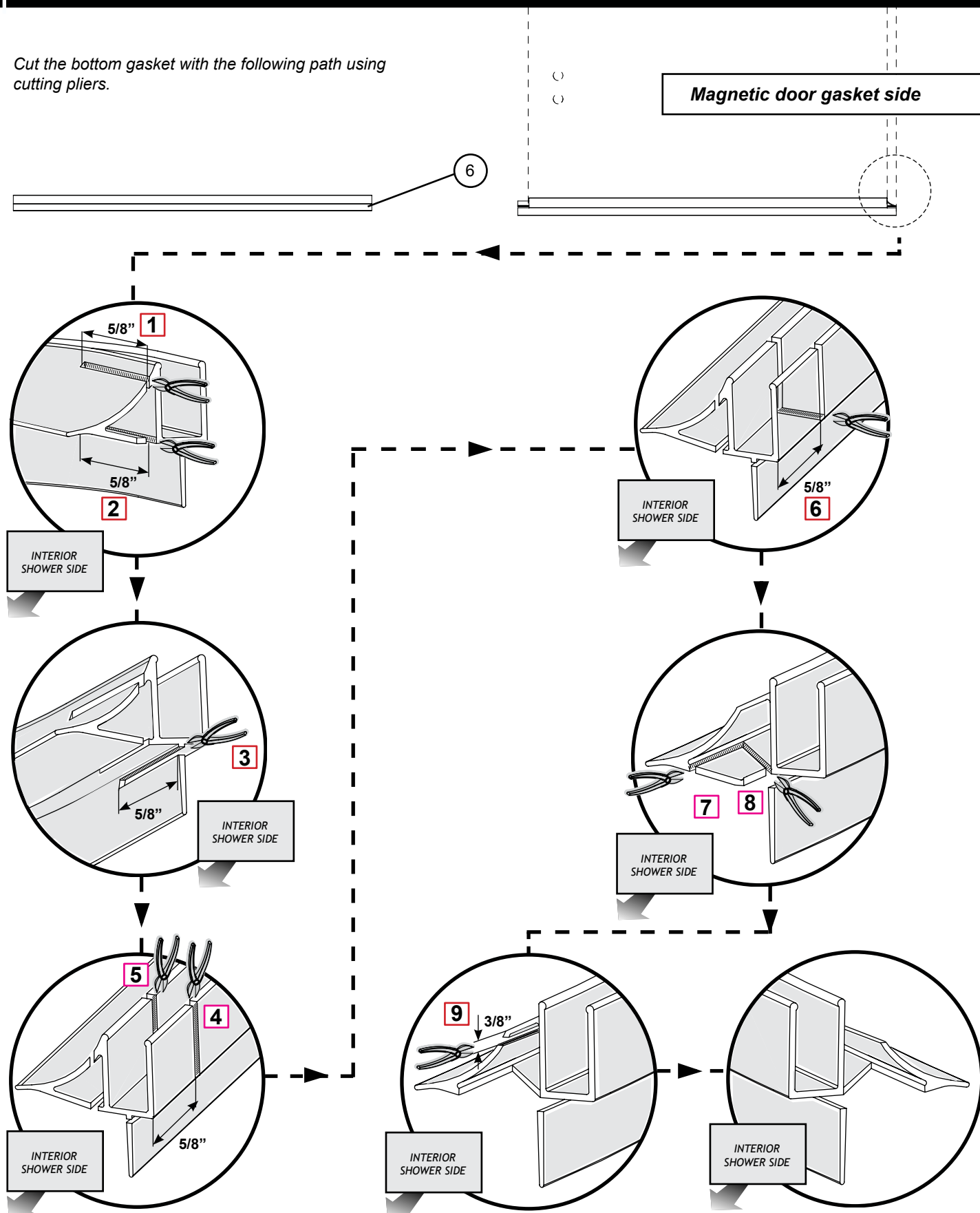
3b. Use a mallet to install the magnetic gasket on the door panel.

3b



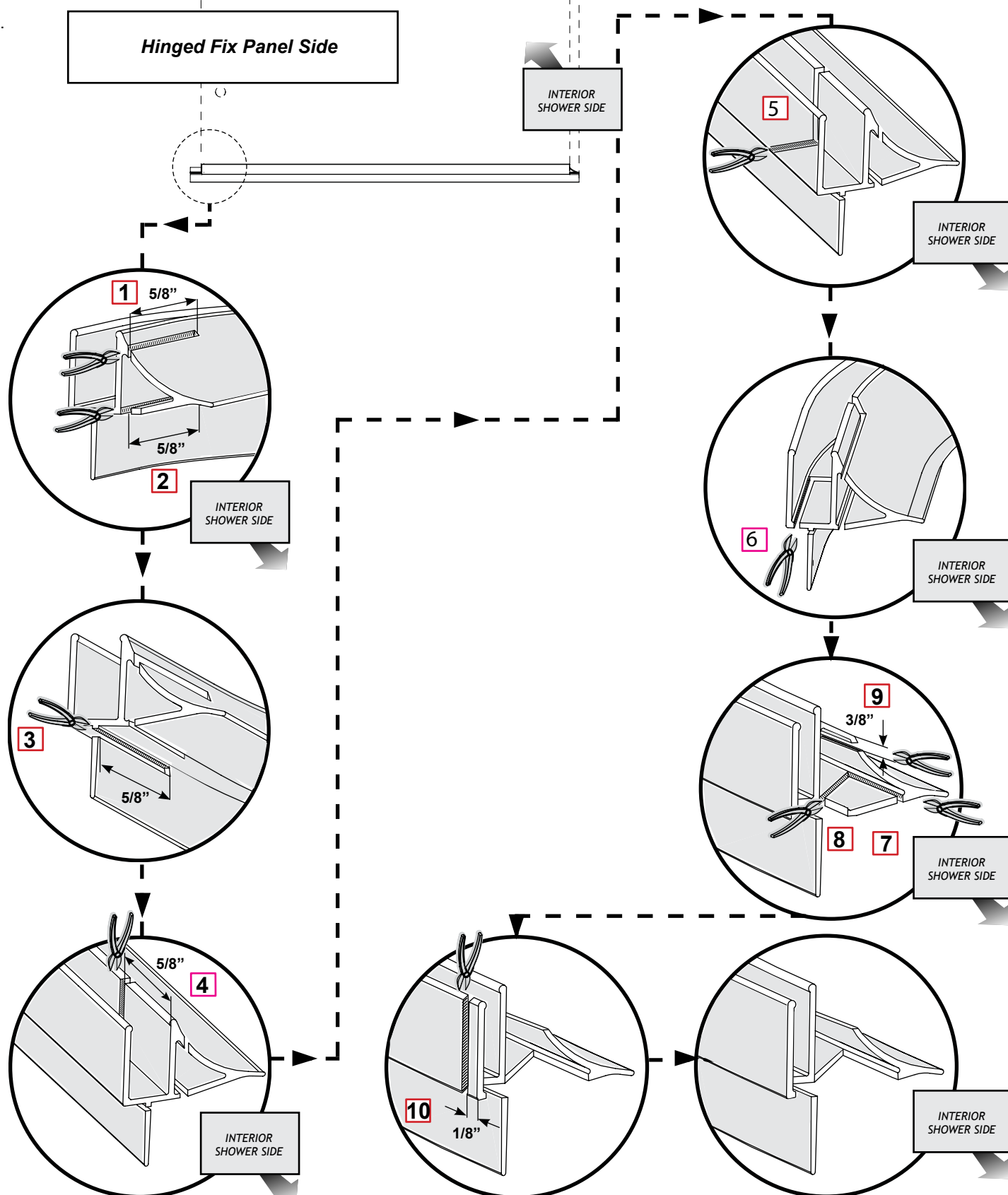
4 BOTTOM GASKET INSTALLATION

- 4a. Cut the bottom gasket with the following path using cutting pliers.



4 BOTTOM GASKET INSTALLATION (CONTINUED)

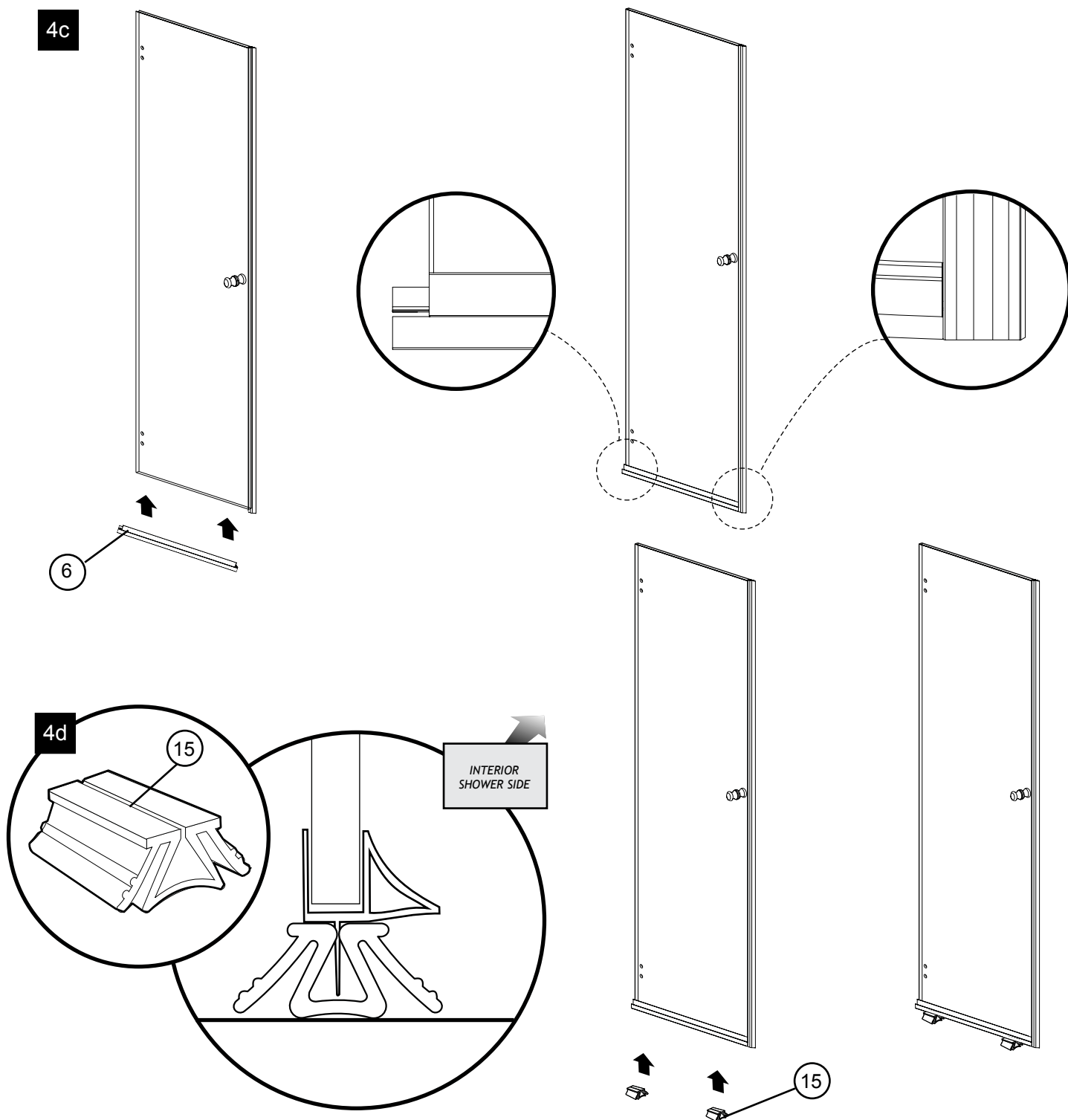
4b.



4 BOTTOM GASKET INSTALLATION (CONTINUED)

4c. Use a mallet to install the bottom gasket on the door panel.

4d. Place the 2 spacing blocks under the bottom gaskets as illustrated.



5

DOOR PANEL INSTALLATION

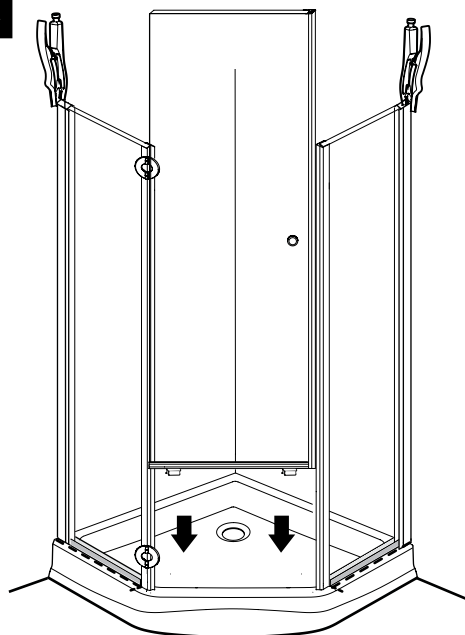
5a. Place the door centered on the base threshold.

5b. Align the holes of the door and fix panel.

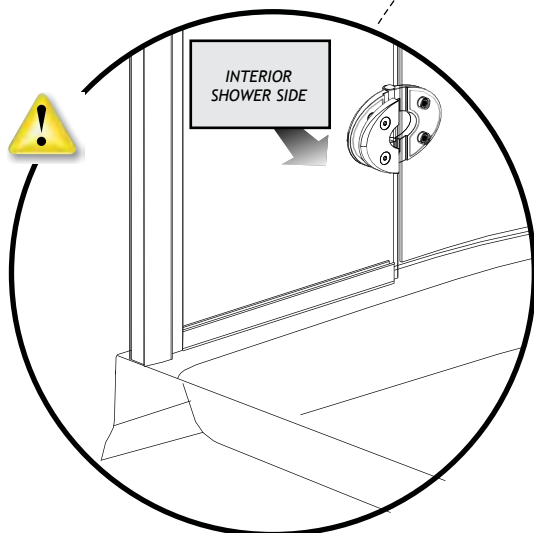
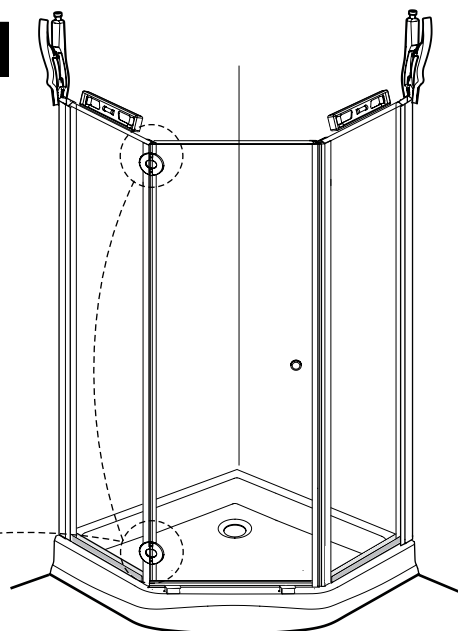


2 PEOPLE REQUIRED

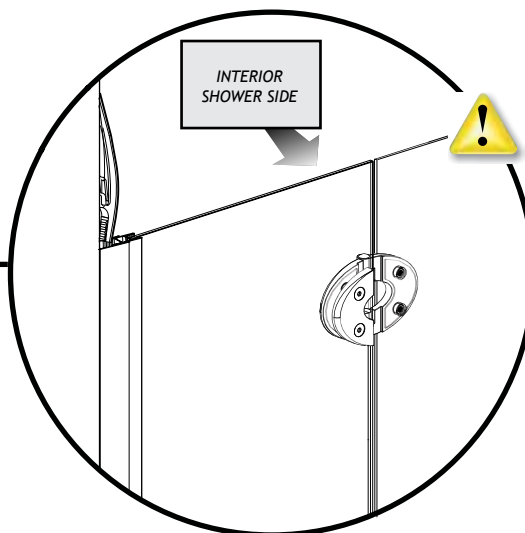
5a



5b



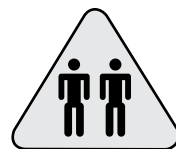
LEVEL GLASS PANELS
TO ALIGN THE
HOLES.



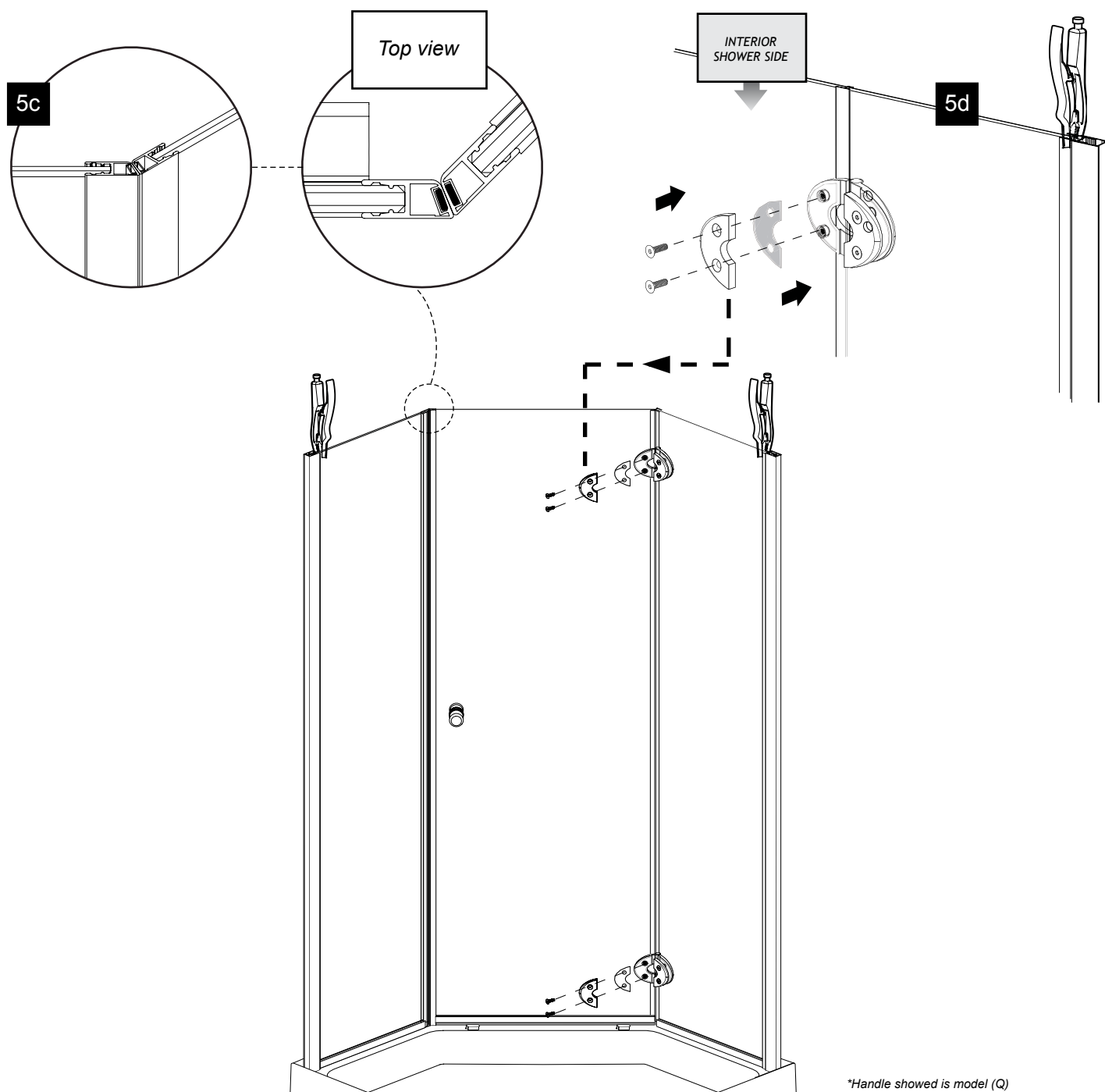
5 DOOR PANEL INSTALLATION(CONTINUED)

5c. Adjust the glass panels. The magnetic gaskets must be aligned and in contact.

5d. Fasten the remaining rear side component of the hinges to the door as illustrated. Use the provided hex. Key.



2 PEOPLE REQUIRED



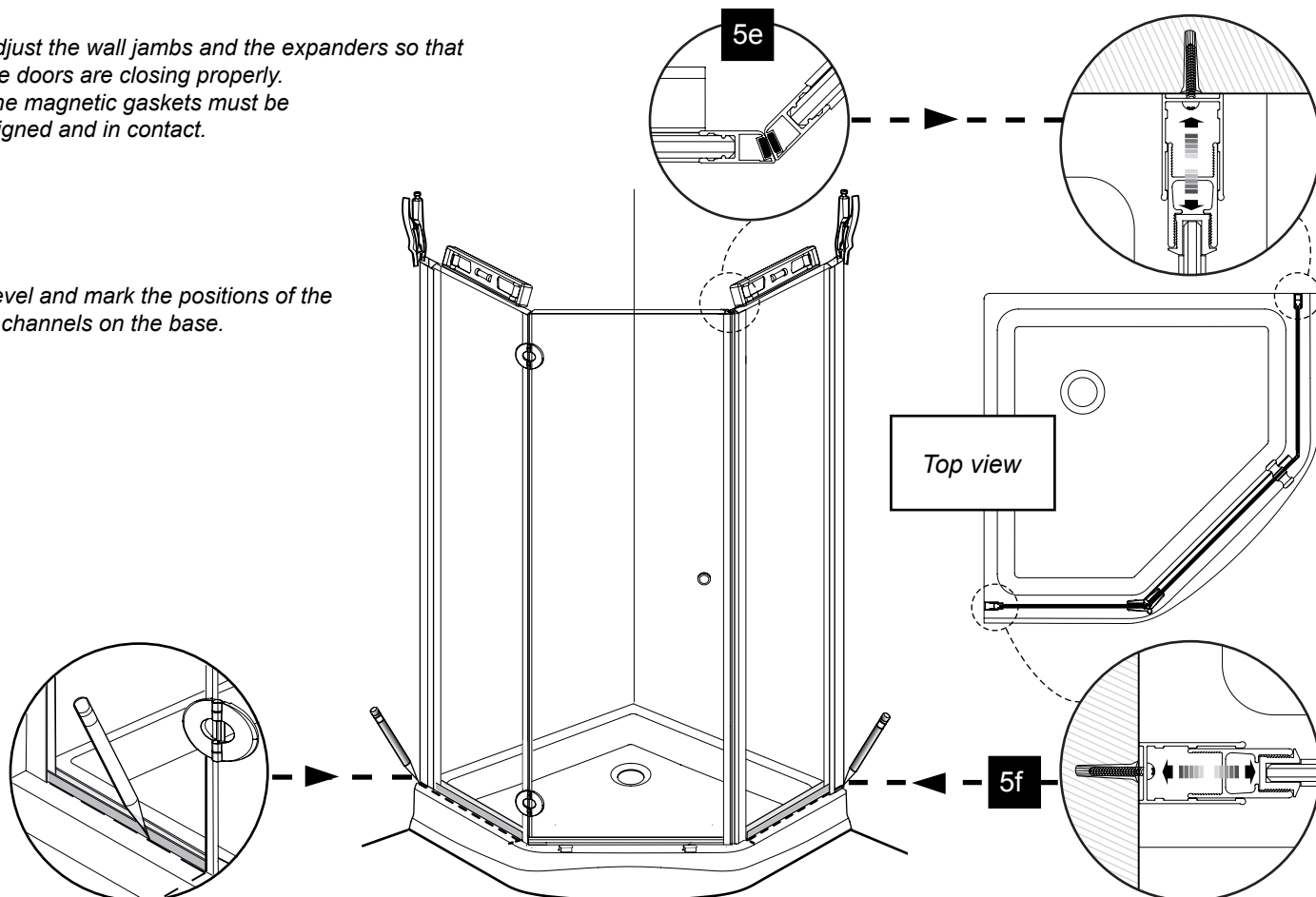
*Handle showed is model (Q)

5

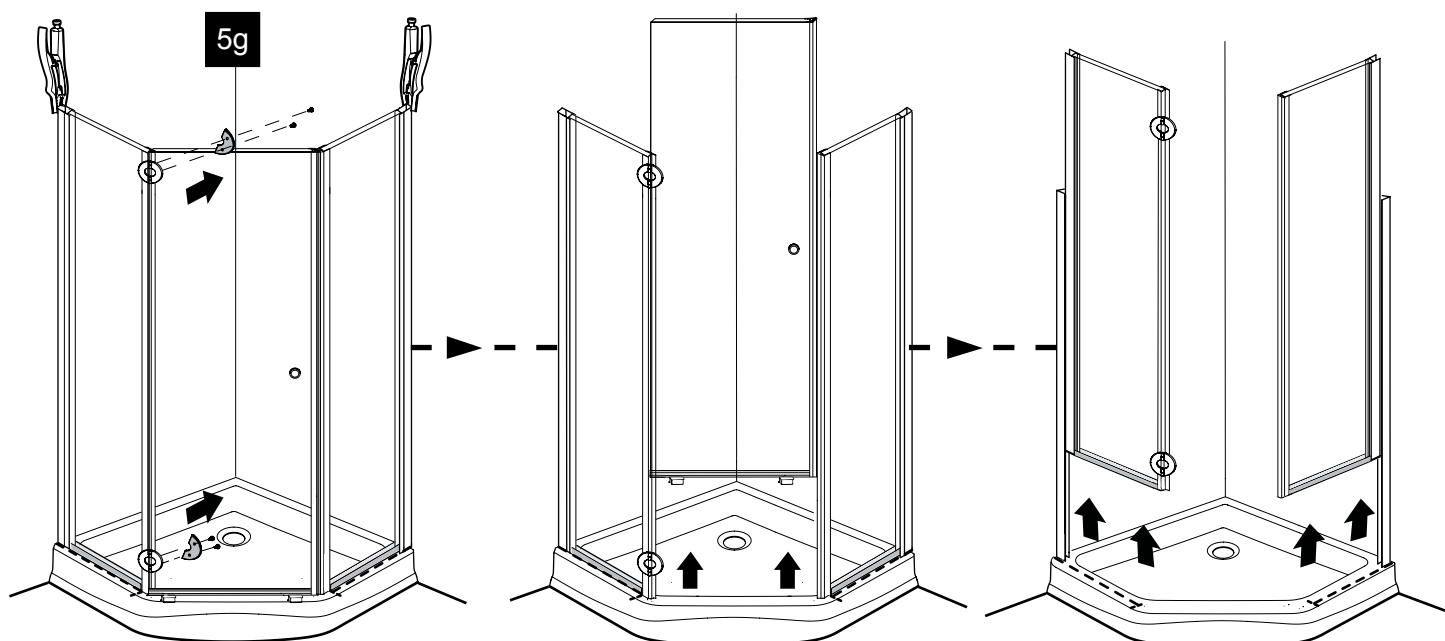
DOOR PANEL INSTALLATION (CONTINUED)

- 5e. *Adjust the wall jambs and the expanders so that the doors are closing properly. The magnetic gaskets must be aligned and in contact.*

- 5f. *Level and mark the positions of the U channels on the base.*



- 5g. *Remove the back side of the hinges, the door and fix panels.*

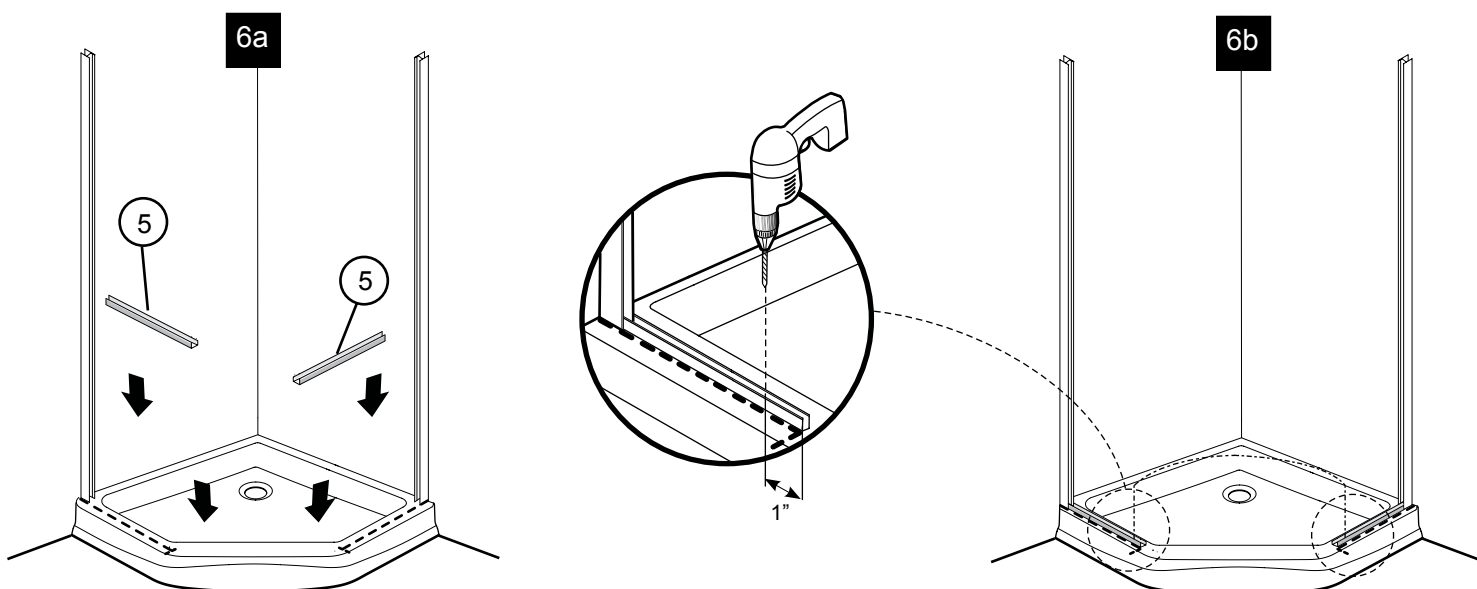


6

FIX PANEL INSTALLATION

6a. Replace temporarily the U channels on the position marks.

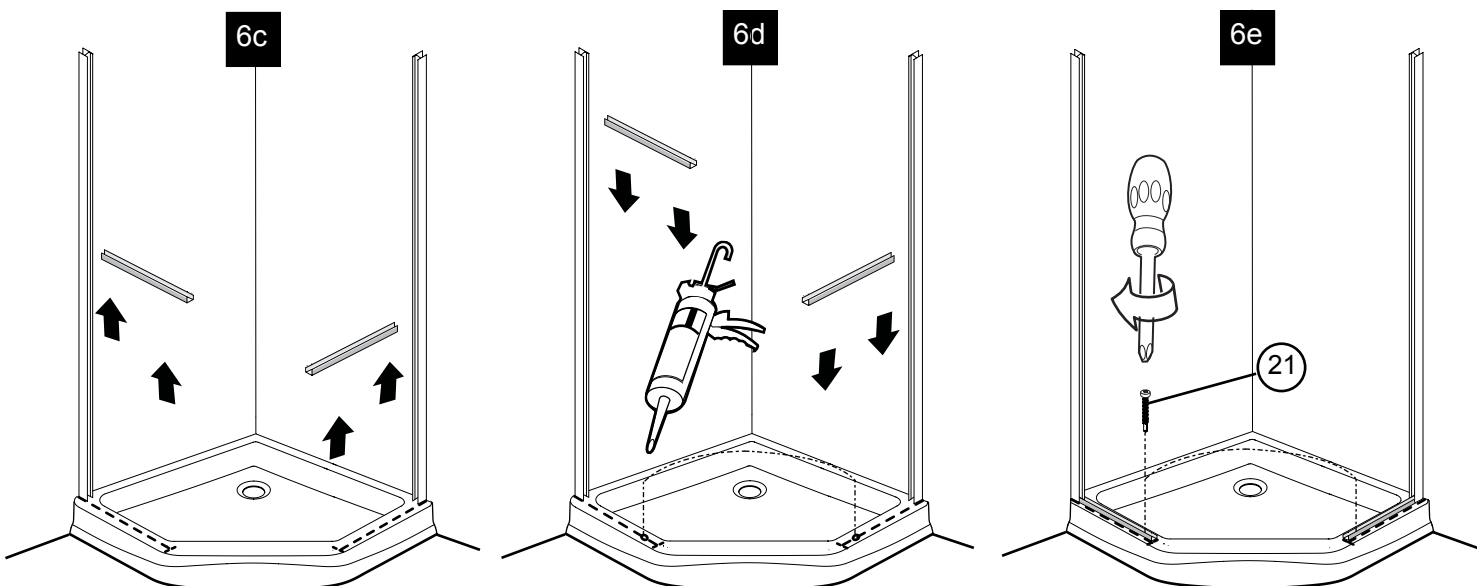
6b. Drill holes through the U channels using $\varnothing 1/8"$ drill bit .



6c. Remove the aluminum "U" channels.

6d. Insert one drop of silicone in each hole in the base before replacing the aluminum "U" channels.

6e. Screw the two aluminum profiles into the base by using screws 1 1/4" (x4).



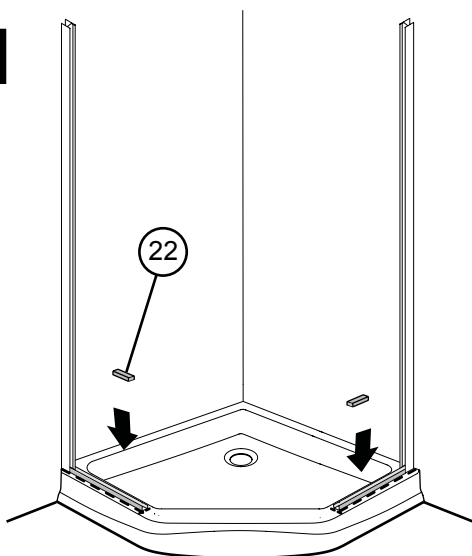
6f. Place the clear setting blocks (#22) over the screws .

6g. Insert the two fix panels into the wall jambs and the aluminum "U" channels

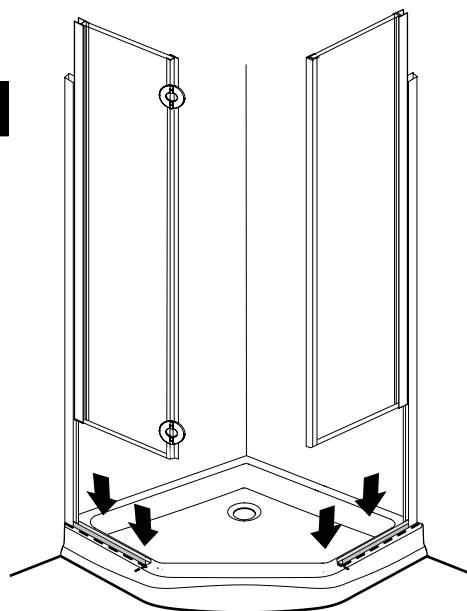
6h. Clamp the expanders and the wall jambs making sure to protect the metal surfaces.
Level the glass panels and if necessary use also the clear setting blocks #23.

6i. Replace the door on the base threshold.

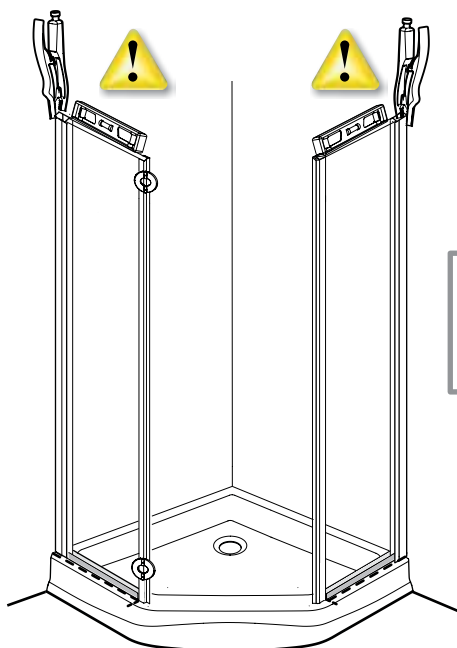
6f



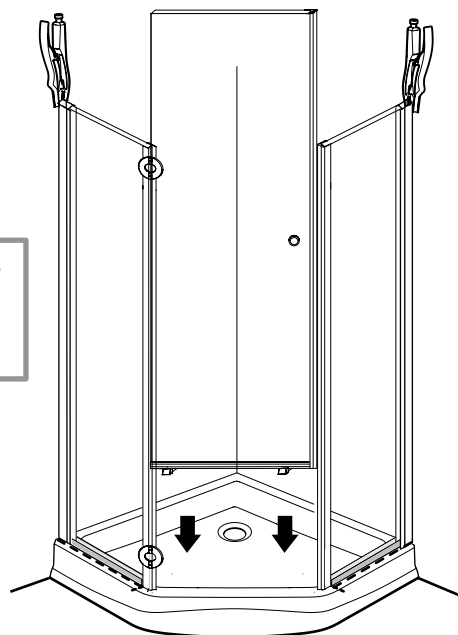
6g



6h



6i

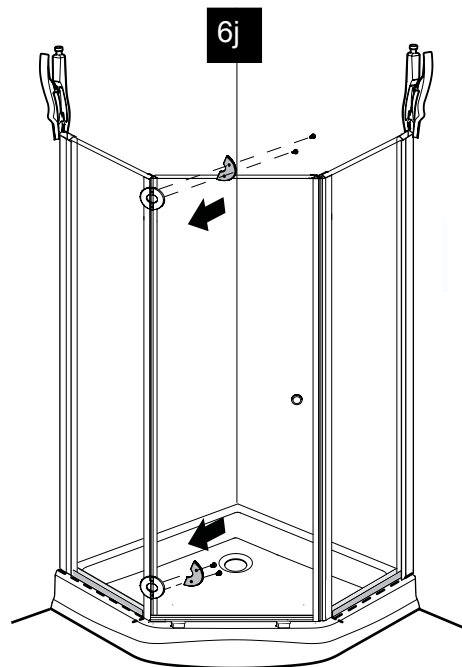
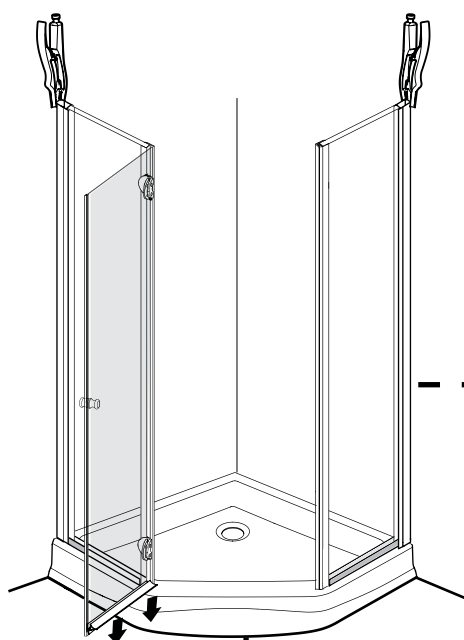


COVER THE PLIER'S TEETH
BEFOREHAND TO
AVOID SCRATCHING THE
ALUMINUM PARTS.

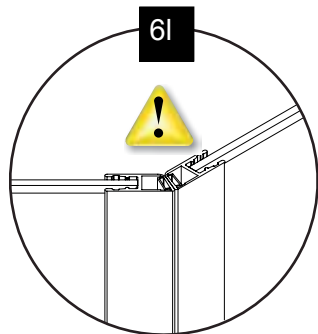
6j. Reinstall the back side of the hinges.

6k. Remove the spacing blocks.

6l. The magnetic gaskets must be aligned and in contact. If needed adjust the glass panels so that the doors are closing properly.

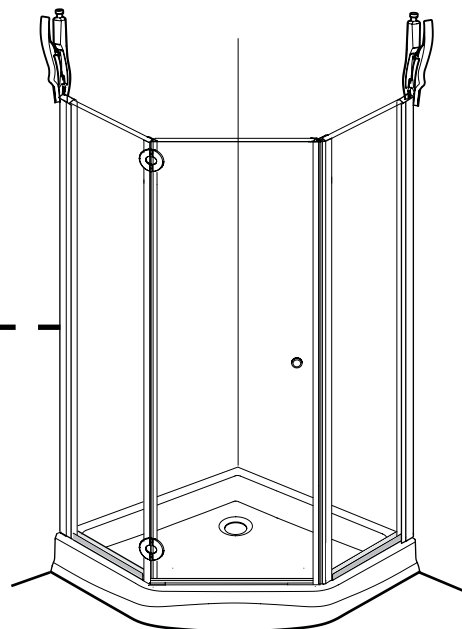


6k



6l

THE MAGNETIC GASKETS
MUST BE ALIGNED AND IN
CONTACT.

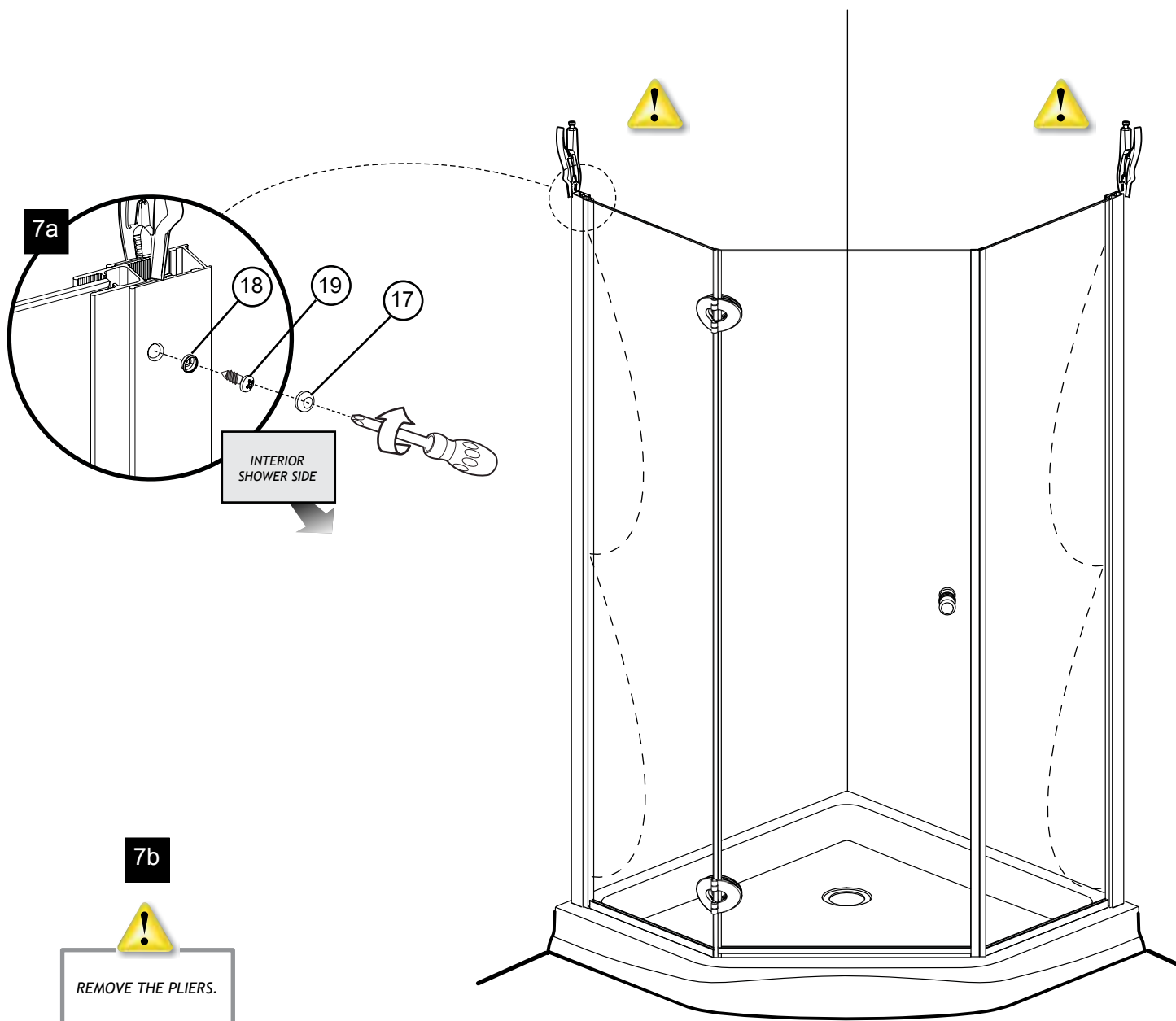


7

SECURE THE EXPANDERS

7a. Secure the fix panels with the screws 3/8" (x6) ensuring that the magnetic gaskets are still in contact .
Place the caps on the heads of apparent screws.

7b. Remove the pliers after the fix panels are secured.



SUPPORT BARS INSTALLATION

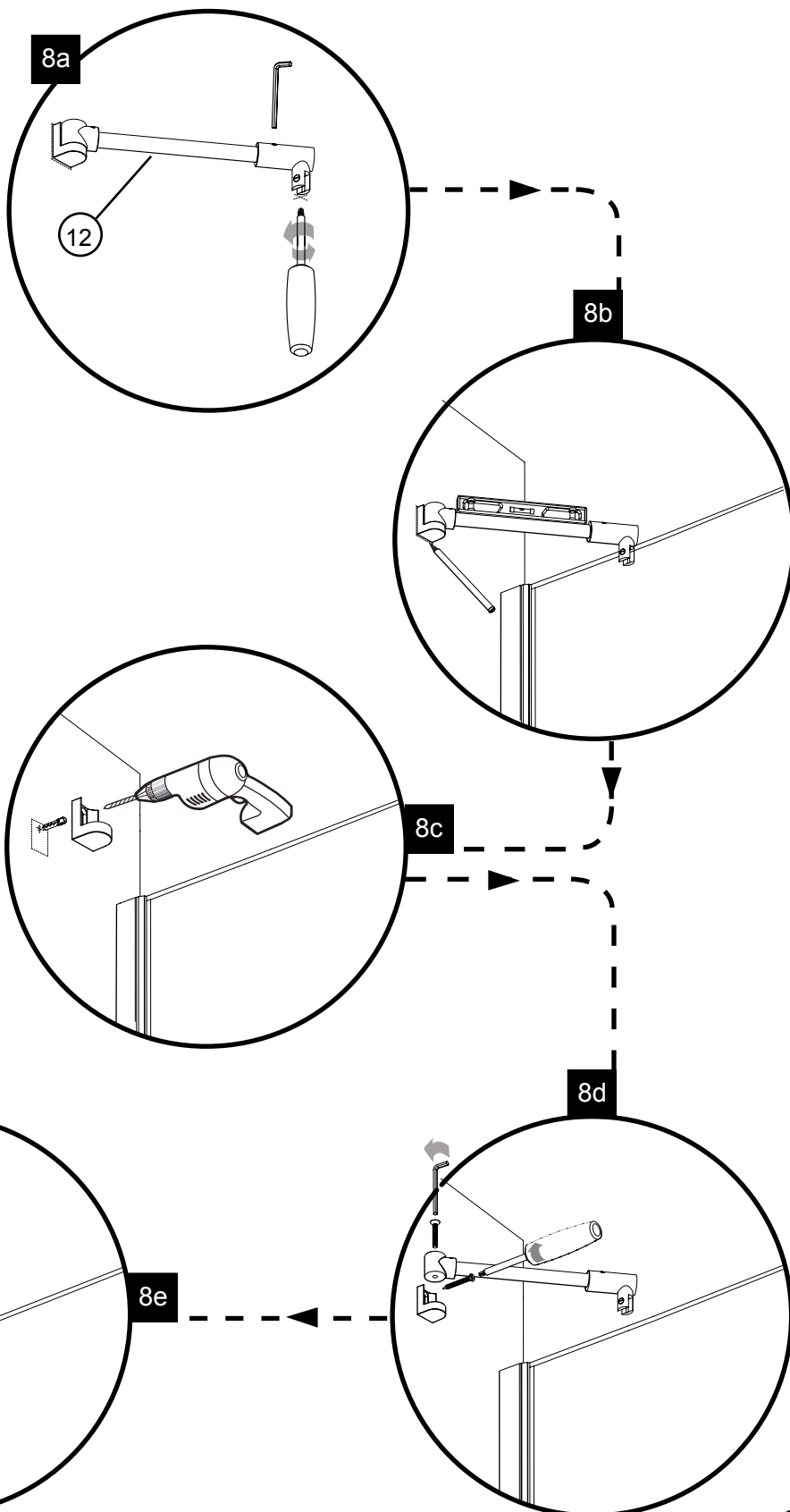
8a. Loosen the glass clip. Align the slot to the fixed panel. The slotted screw head should be on the inside of the shower.

8b. Rest the support bar on the fixed panel inside the tub. Level it and trace an arc on the wall.

8c. Isolate the wall bracket and drill a hole, using a 1/4" drill bit through the wall. Locate the position of this hole by way of the wall bracket. Insert a wall plug.

8d. Secure the wall bracket to the wall by way of the screw. Assemble the cylindrical joint to the wall bracket.

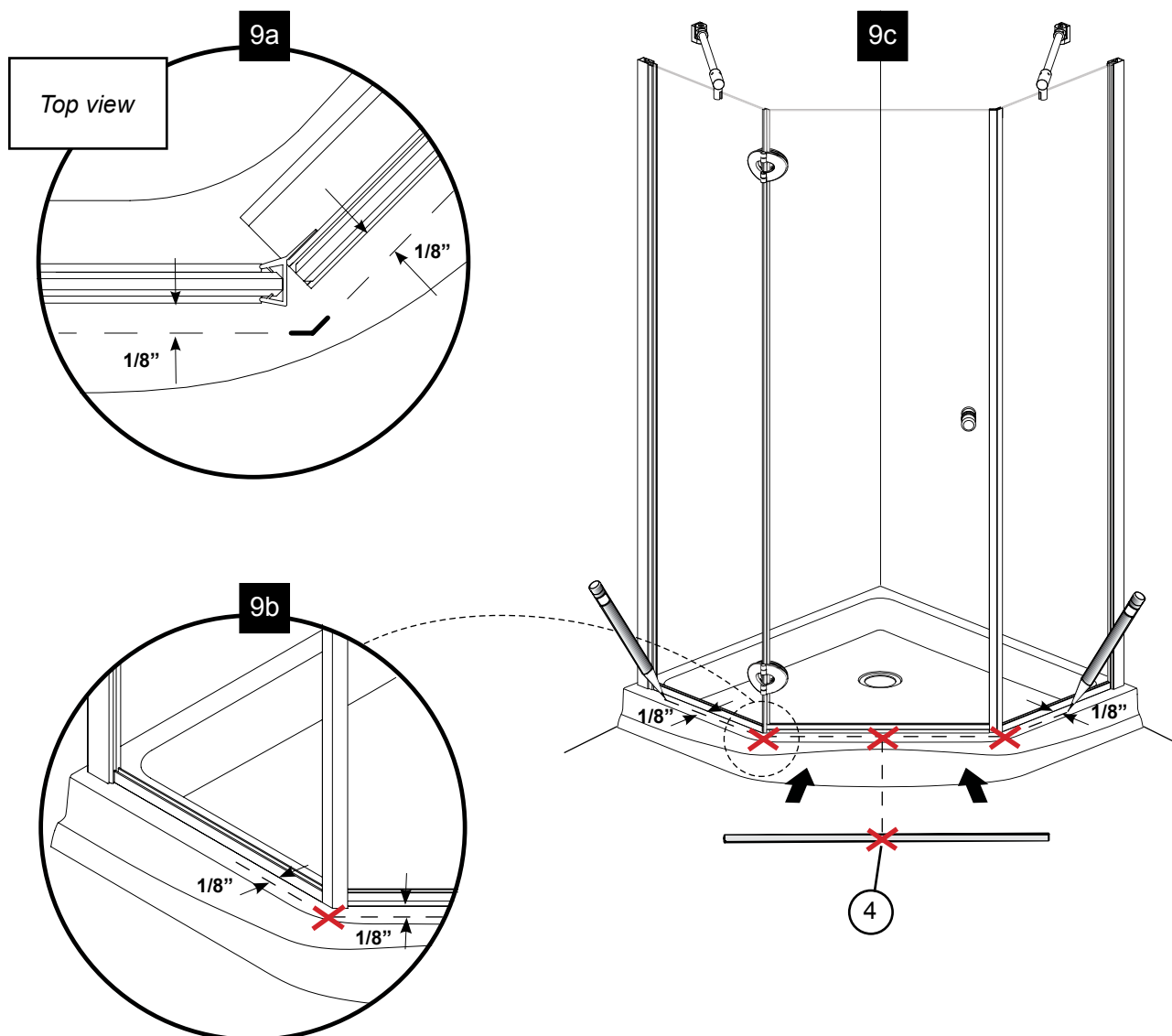
8e. Secure the glass fastener and wall bracket screws to complete the installation process.



9a Draw lines at a distance of 1/8" from the two aluminum "U" profiles towards the outside of the shower as illustrated.

9b Mark the lines intersections in each corner and the middle of the base as illustrated.

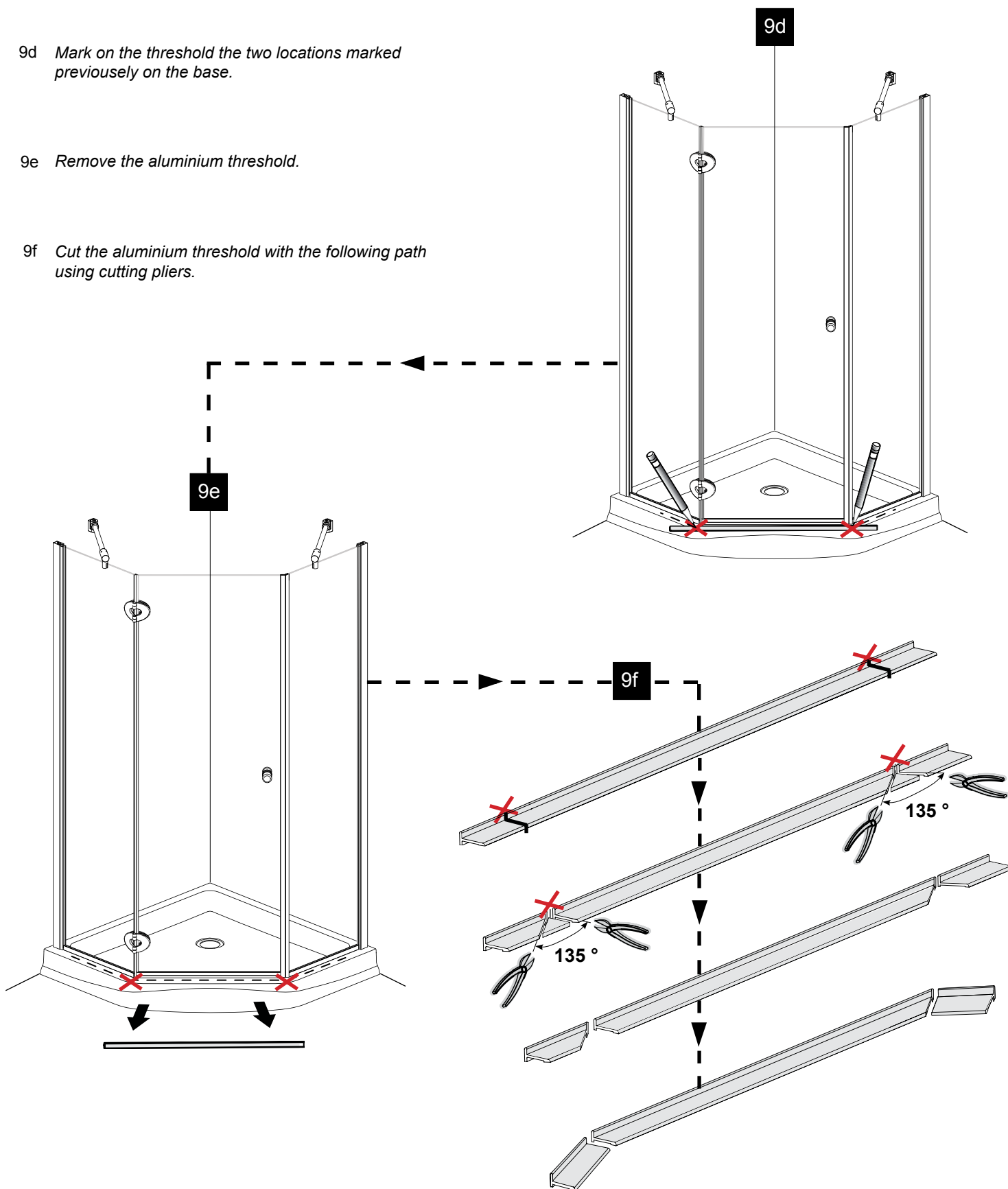
9c Place temporarily the aluminum threshold on the marked positions as illustrated.
Place the middle of the threshold on the middle of the base.



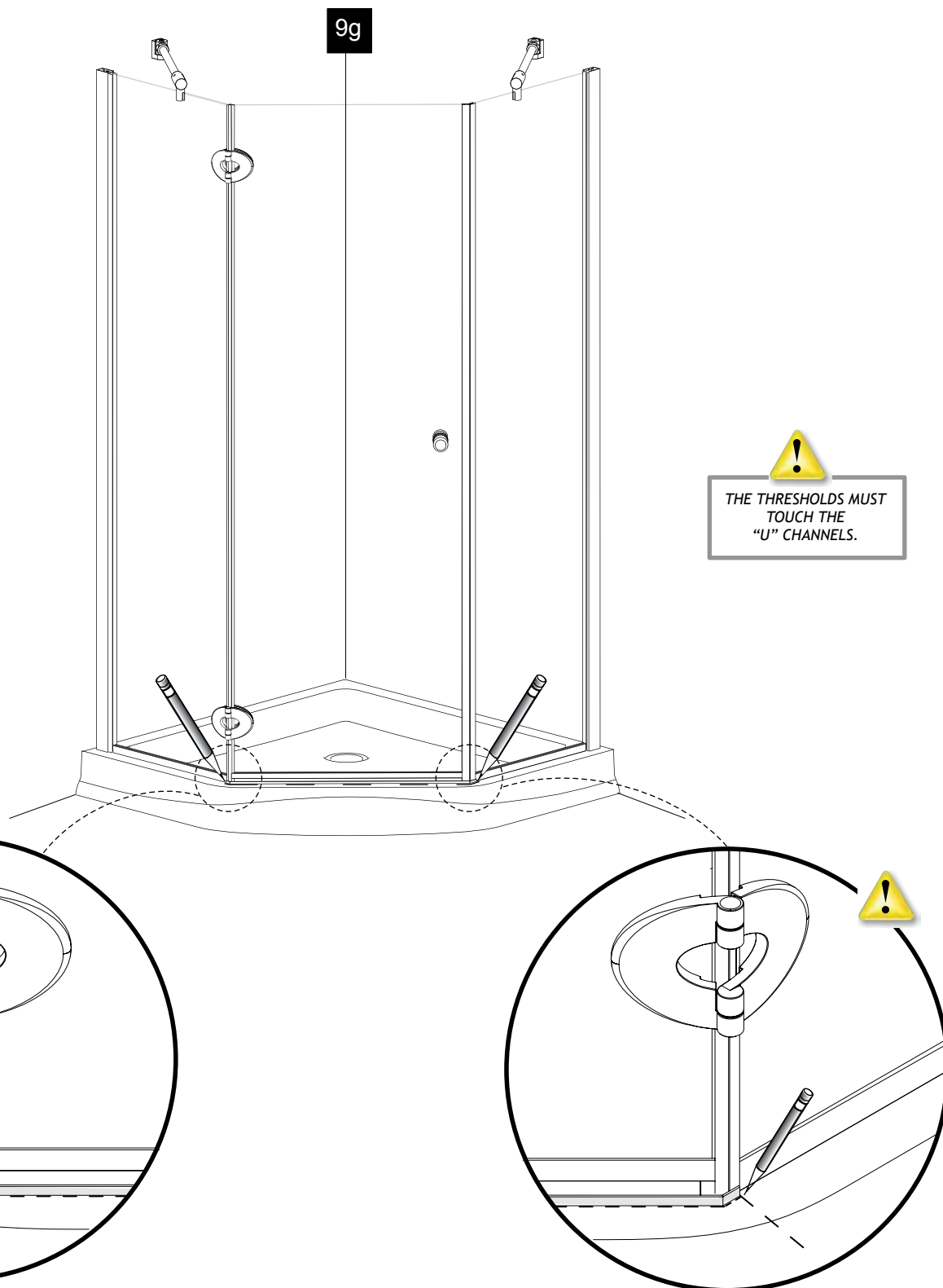
9d Mark on the threshold the two locations marked previously on the base.

9e Remove the aluminium threshold.

9f Cut the aluminium threshold with the following path using cutting pliers.



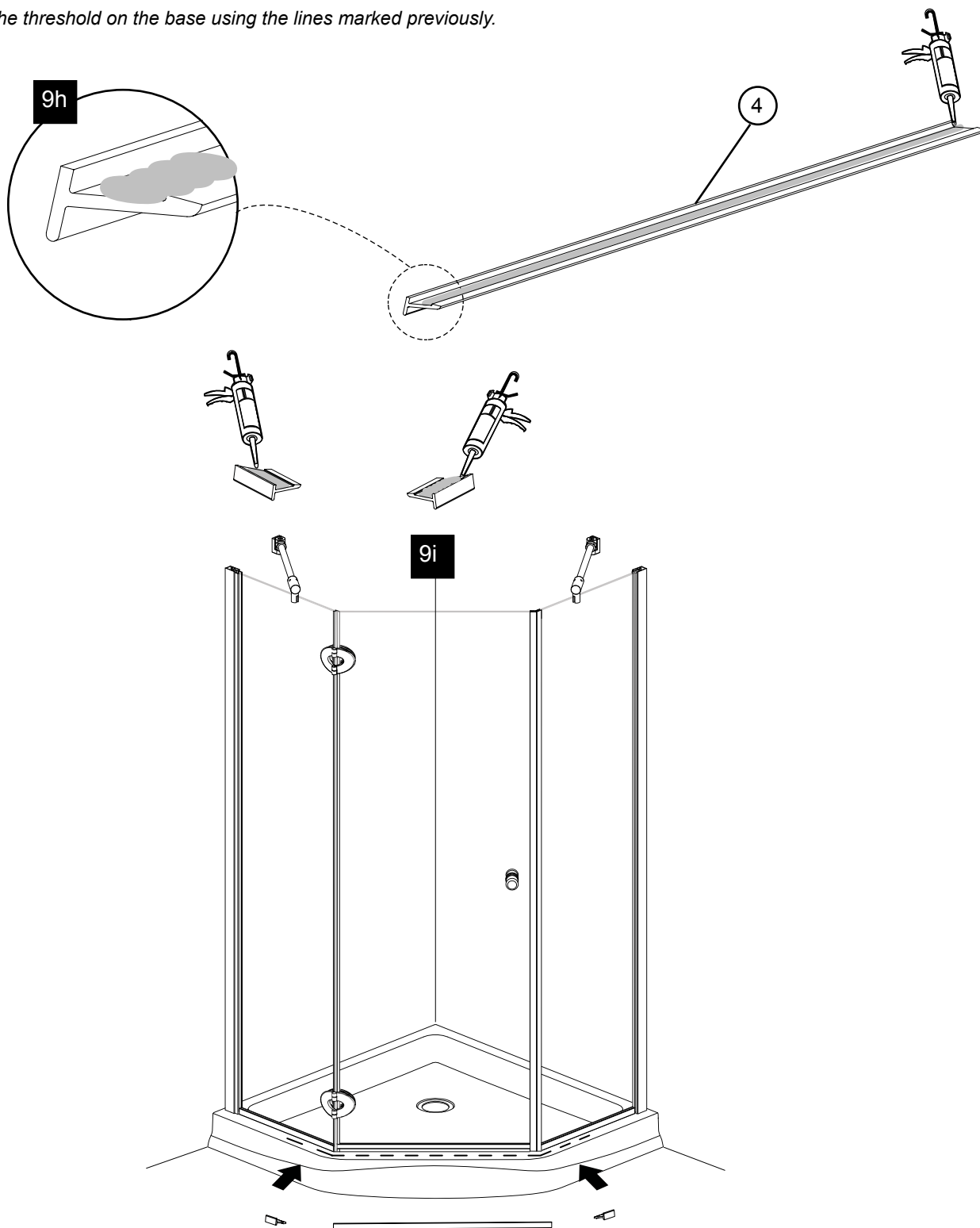
- 9g Replace the threshold on the base and mark the position . The thresholds must touch the "U" channels .
Cut the two small end parts if needed.



9 ACCESSORIES INSTALLATION (CONTINUED)

9h Apply a bead of silicone to the underside of the threshold.

9i Replace the threshold on the base using the lines marked previously.



10

SEALING

10a *Silicone the outside of the shower, around the wall jamb, below of the fix panels, around the threshold and around the U channels.*

10b *Wait 24 hours before using the shower to dry the silicon.*

