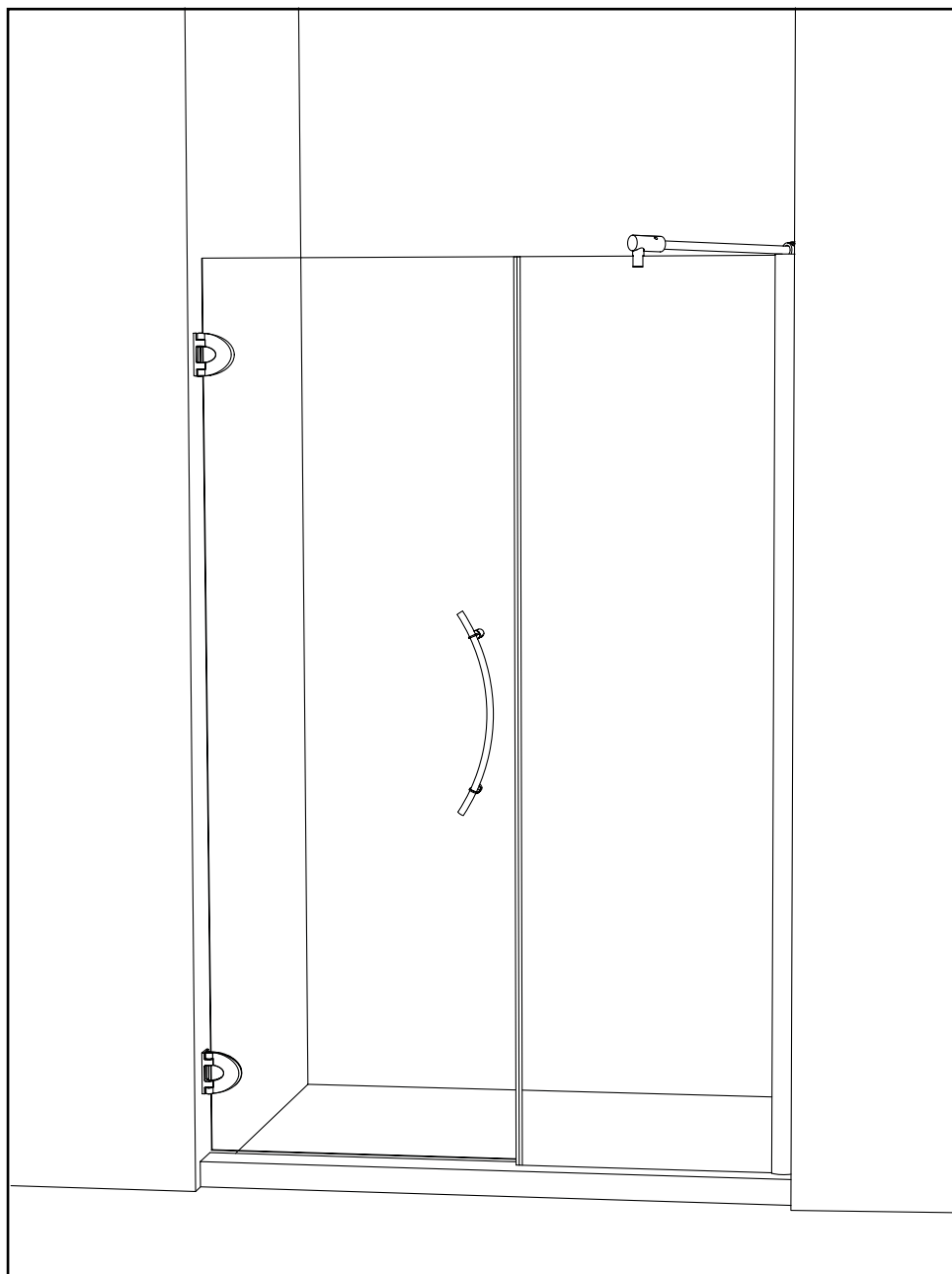


**M-DP91X**  
INSTRUCTION MANUAL

ALUMAX  
*Moana Collection*





*Please keep this manual and product code number for future reference  
and to order replacement parts if necessary.*

- **Table of Contents**

MODEL NUMBER.....	2
GENERAL INSTRUCTIONS .....	3
INSTALLATION OVER CERAMIC TILES.....	3
NOTICE.....	3
CARE FOR YOUR FRAMELESS SHOWER DOOR .....	3
PARTS LISTING.....	4
PROVIDED HARDWARE.....	6
TOOLS AND MATERIALS REQUIRED .....	6
1. DETERMINE HINGES LOCATION. ....	7
2. FASTEN THE HINGES TO THE WALL. ....	8
3. PREASSEMBLE THE DOOR.....	8
4. INSTALL THE DOOR PANEL.....	9
5. INSTALL THE DOOR HANDLE. ....	9
6. MOUNT THE WALL JAMB. ....	10
7. INSERT THE MAGNETIC GASKET. ....	11
8. POSITION THE FIXED PANEL.....	11
9. FASTEN THE “U” CHANNEL. ....	12
10. INSTALL THE FIXED PANEL.....	12
11. FASTEN THE SUPPORT BAR. ....	13
12. INSTALL THE DOOR GASKETS.....	14
13. SILICONE SEAL THE SHOWER.....	15

- **General Instructions**

- Read this manual carefully and completely before proceeding.
- It is recommended that you wear safety glasses at all times during the installation.

- **Installation over Ceramic Tiles**

- Silicone should be used to seal the gap where the ceramic tiles meet the fixed panel.
- If your shower door is to be installed over ceramic tiles, the tiles should lay completely under the wall jamb.

- **Notice**

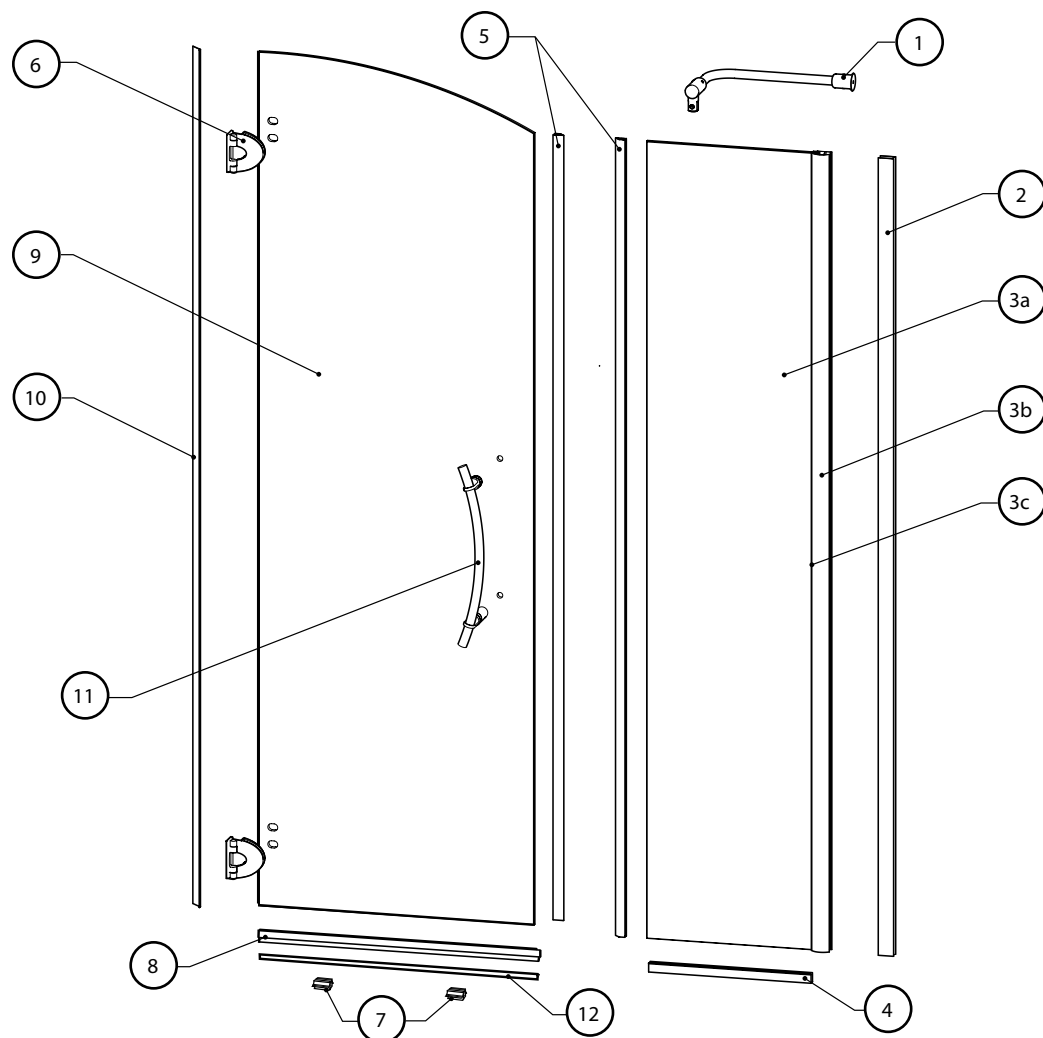
- Caulking: no sealant is required inside the shower.
- All models are equipped with transparent sealing gaskets.

- **Care for your Frameless Shower Door**

- Never use scouring powder pads or sharp instruments on metal pieces or glass panels.  
An occasional wiping down with a mild soap diluted in water is all that is needed to keep the panels and aluminum parts looking new.
- We recommend wiping the glass panels with a squeegee after each use.

<p><b>Product specifications are subject to change without notice.</b></p>
--

## PARTS LISTING

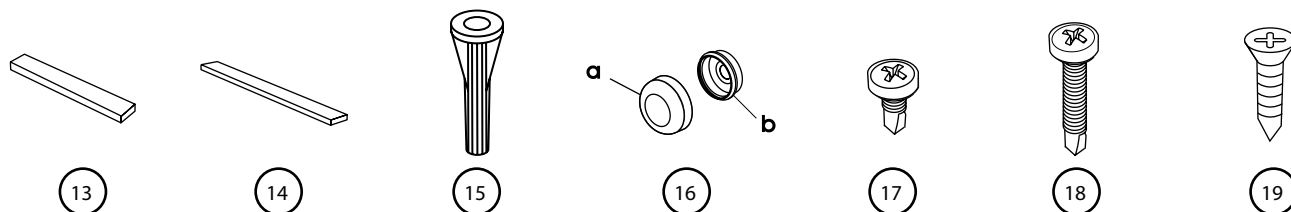


ITEM	PARTS	QTY
1	SUPPORT BAR	1
2	WALL JAMB (TEMPLATE)	1
3a	SIDE PANEL	1
3b	EXPANDER	1
3c	GASKET	1
4	ALUMINUM "U" CHANNEL	1
5	MAGNETIC DOOR GASKET	2
6	OVAL WALL-MOUNT HINGE	2
7	LEVELING BLOCKS	2
8	BOTTOM DOOR GASKET	1
9	DOOR PANEL	1
10	DOOR SIDE GASKET	1
11	CURVED HANDLE	1
12	THRESHOLD	1

\*next page

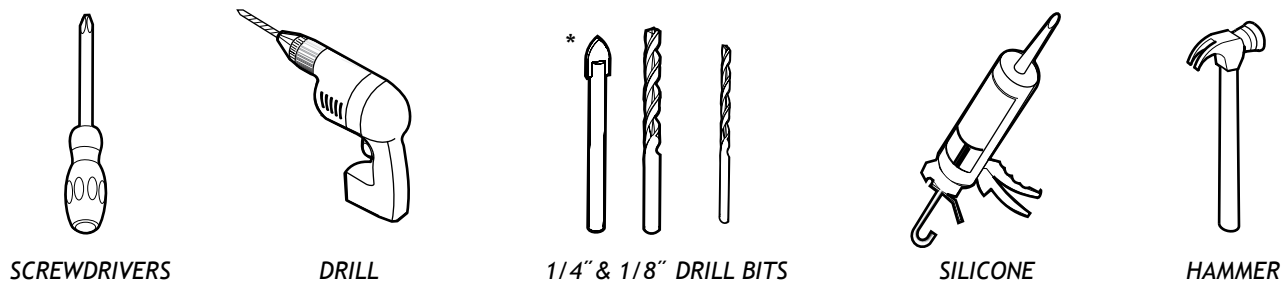
MODEL	DOOR PANEL	SIDE PANEL	ALUM. "U" CHANNEL	BOTTOM DOOR GASKET	THRESHOLD
36	(20 3/16" x 75")	(13 5/8" x 70")	12 11/16"	21 3/4"	21 1/8"
37	(20 3/16" x 75")	(15" x 70")	14 1/16"	21 3/4"	21 1/8"
38	(21 3/16" x 75")			22 3/4"	22 1/8"
39	(22 3/16" x 75")			23 3/4"	23 1/8"
40	(23 3/16" x 75")			24 3/4"	24 1/8"
41	(24 3/16" x 75")			25 3/4"	25 1/8"
42	(25 3/16" x 75")			26 3/4"	26 1/8"
43	(26 3/16" x 75")			27 3/4"	27 1/8"
44	(27 3/16" x 75")			28 3/4"	28 1/8"
45	(28 3/16" x 75")			29 3/4"	29 1/8"
46	(24 3/16" x 75")	(19 5/8" x 70")	18 11/16"	25 3/4"	25 1/8"
47	(25 3/16" x 75")			26 3/4"	26 1/8"
48	(26 3/16" x 75")			27 3/4"	27 1/8"
49	(27 3/16" x 75")			28 3/4"	28 1/8"
50	(28 3/16" x 75")			29 3/4"	29 1/8"
51	(29 3/16" x 75")			30 3/4"	30 1/8"
52	(30 3/16" x 75")			31 3/4"	31 1/8"
53	(31 3/16" x 75")			32 3/4"	32 1/8"
54	(32 3/16" x 75")			33 3/4"	33 1/8"
57	(32 3/16" x 75")	(23" x 70")	22 1/16"	33 3/4"	33 1/8"
58		(24" x 70")	23 1/16"		
CUSTOM MODEL	DOOR PANEL	SIDE PANEL	ALUM. "U" CHANNEL	BOTTOM DOOR GASKET	THRESHOLD
55	(32 3/16" x 75")	(21" x 70")	20 1/16"	33 3/4"	33 1/8"
56		(22" x 70")	21 1/16"		

## PROVIDED HARDWARE

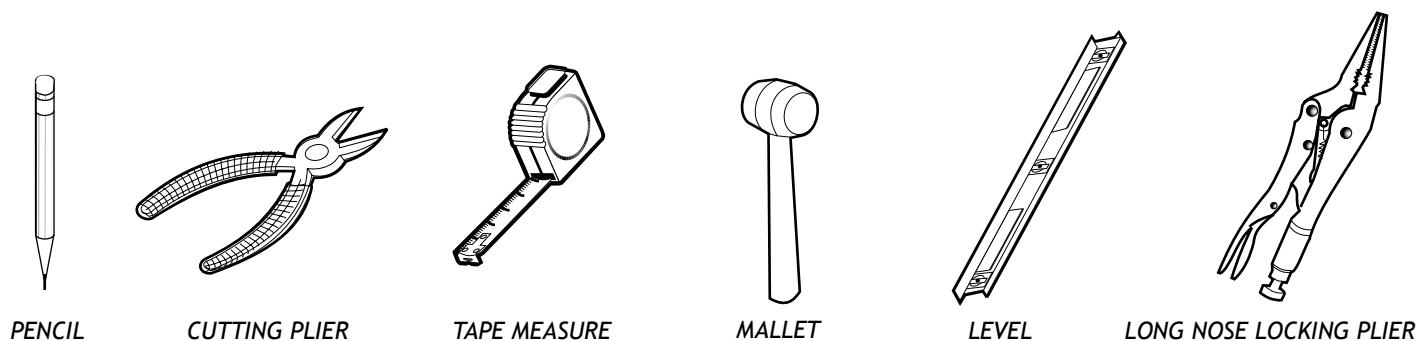


ITEM	HARDWARE	QTY
13	CLEAR SETTING BLOCK	3
14	CLEAR SETTING BLOCK	2
15	WALL PLUG	4
16	SCREW CAP	4
17	SELF DRILLING SCREW #8-3/8	3
18	SELF-DRILLING SCREW #8-1 1/4	3
19	FLAT HEAD SCREW #6-3/4	1

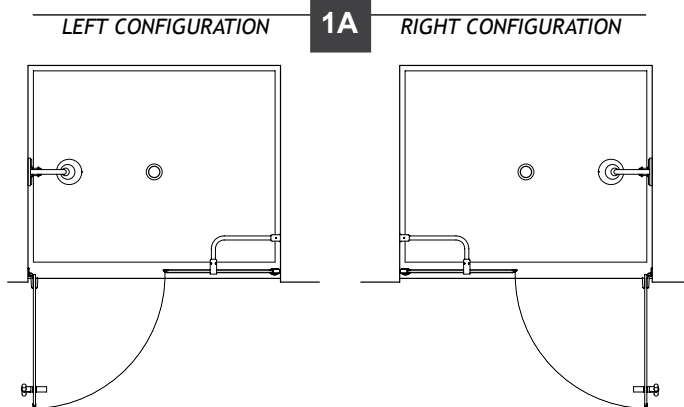
## TOOLS AND MATERIALS REQUIRED



\*If the shower panels are to be assembled on ceramic tiles, use a 1/4" drill bit for ceramic tiles.



# 1 DETERMINE HINGES LOCATION



USE THE WALL JAMB (#2) AS TEMPLATE TO MARK DRILLING LOCATIONS FOR WALL-MOUNTED HINGES.



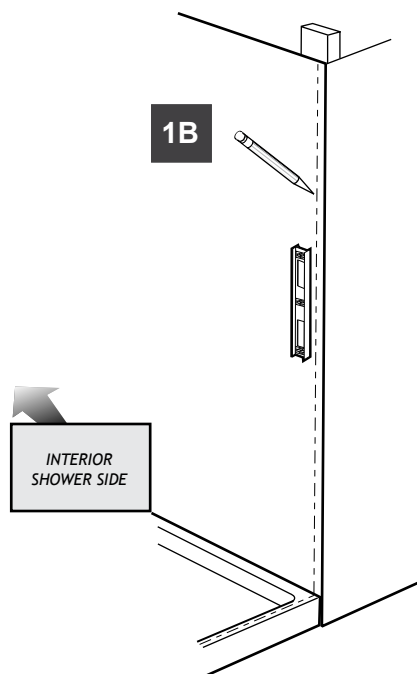
WALL-MOUNTED HINGES MUST BE SUPPORTED AND FASTENED INTO A STUD FRAMING.

1A. Determine on which side the hinges will be mounted. It is recommended to install the hinges on the same side as the showerhead.

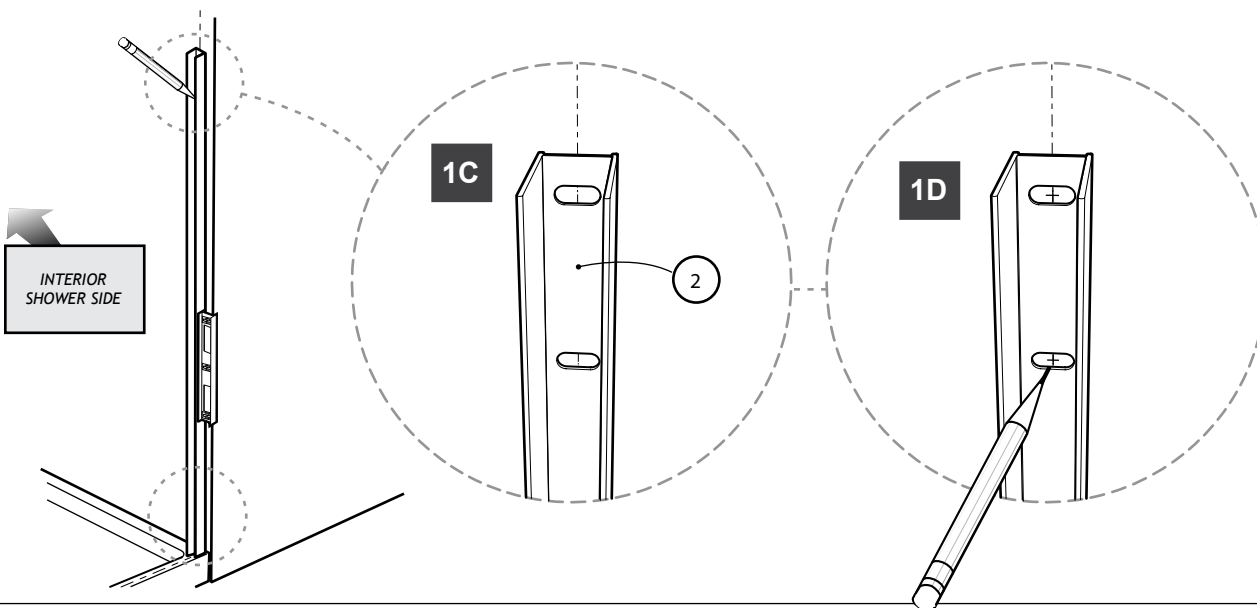
1B. Trace a centerline on the threshold and run it up along the wall.

1C. Place the wall jamb (#2) on the threshold by centering the slotted holes with the centerline.

1D. Mark the drilling locations at the top and bottom of the wall jamb. Drill a hole at each location with a 1/4" drill bit.



RIGHT CONFIGURATION SHOWN

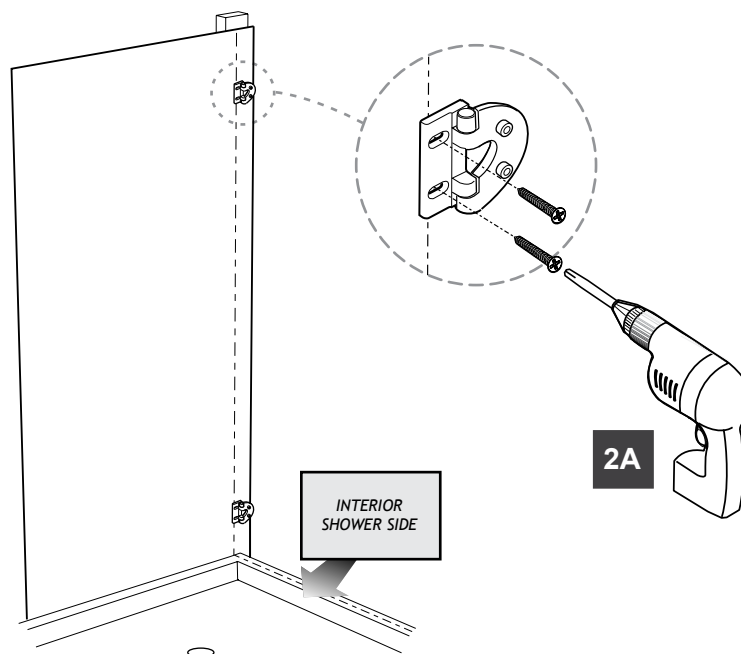


## 2 FASTEN THE HINGES TO THE WALL.



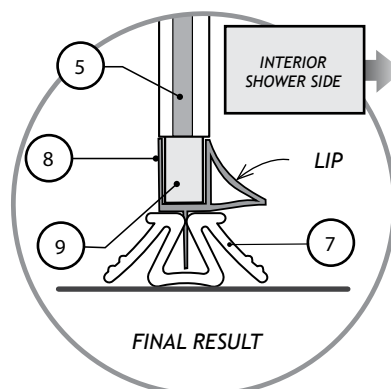
NEVER PLACE THE GLASS DIRECTLY ON THE FLOOR.

2A. Fasten the hinges (#6) to the wall as illustrated.



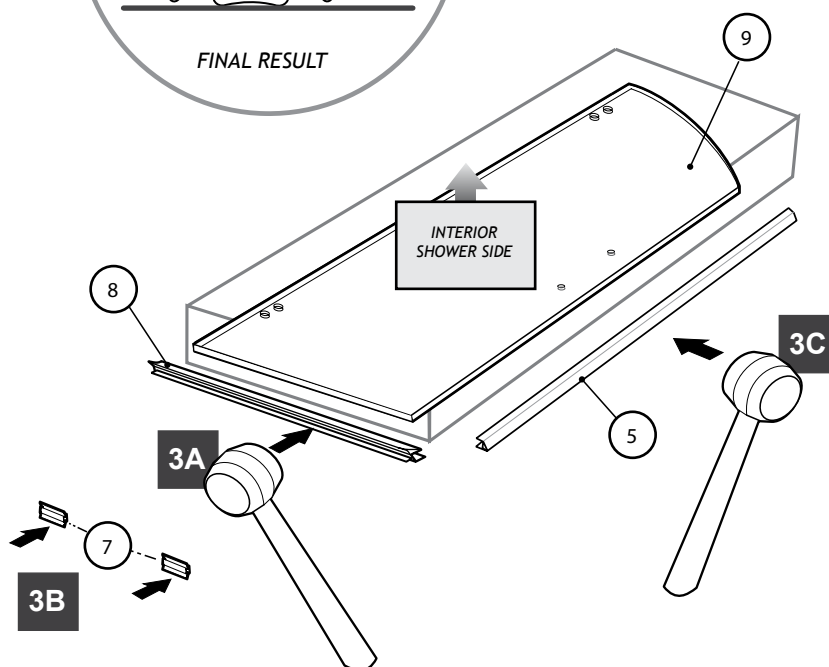
## 3 PREASSEMBLE THE DOOR.

3A. Rest the door panel (#9) on a flat surface. Temporarily insert the bottom door gasket (#8) under the door panel.



3B. Install the 2 leveling blocks (#7) onto the bottom lip of the gasket.

3C. Place the magnetic gasket (#5) on top of the bottom door gasket (#8) and insert it on the door panel using a mallet.





## 4 INSTALL THE DOOR PANEL.

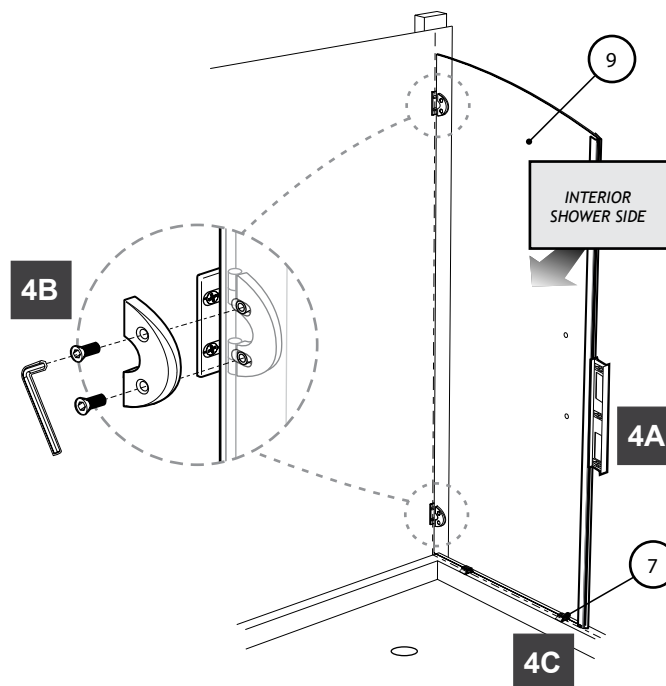


IT IS BEST TO HAVE 2 PEOPLE  
WORKING ON THIS STEP.

4A. Place the door assembly on the shower threshold and level it.

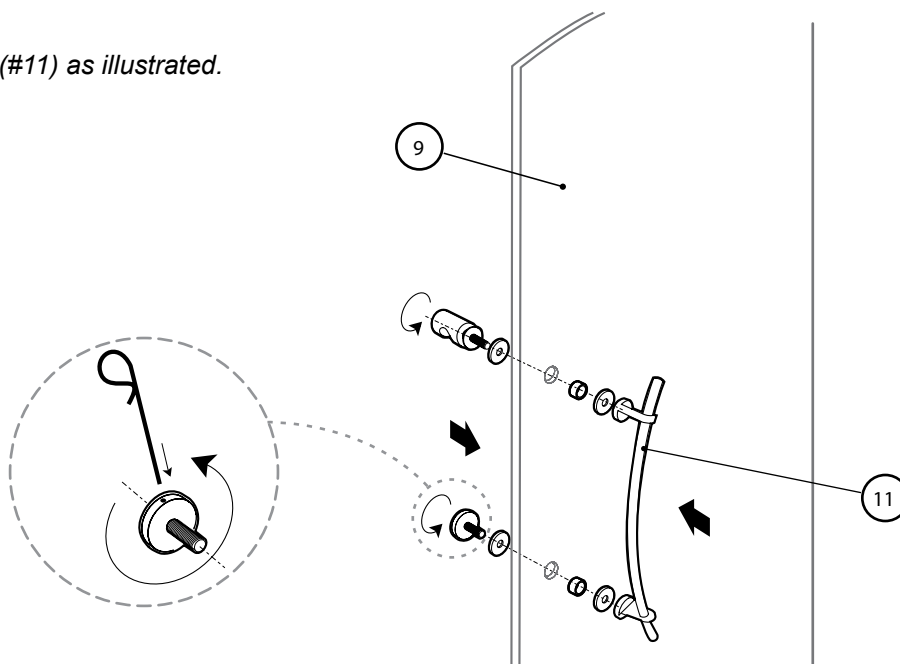
4B. Fasten the hinges as illustrated using the Allen key.

4C. Remove the leveling blocks (#7) and the bottom door gasket.

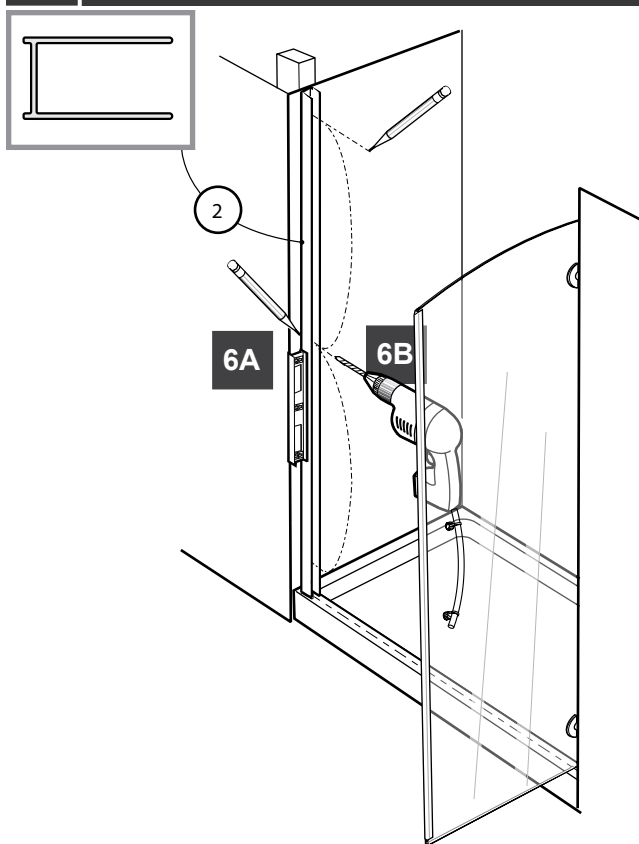


## 5 INSTALL THE DOOR HANDLE.

5A. Install the curved door handle (#11) as illustrated.



## 6 MOUNT THE WALL JAMB.

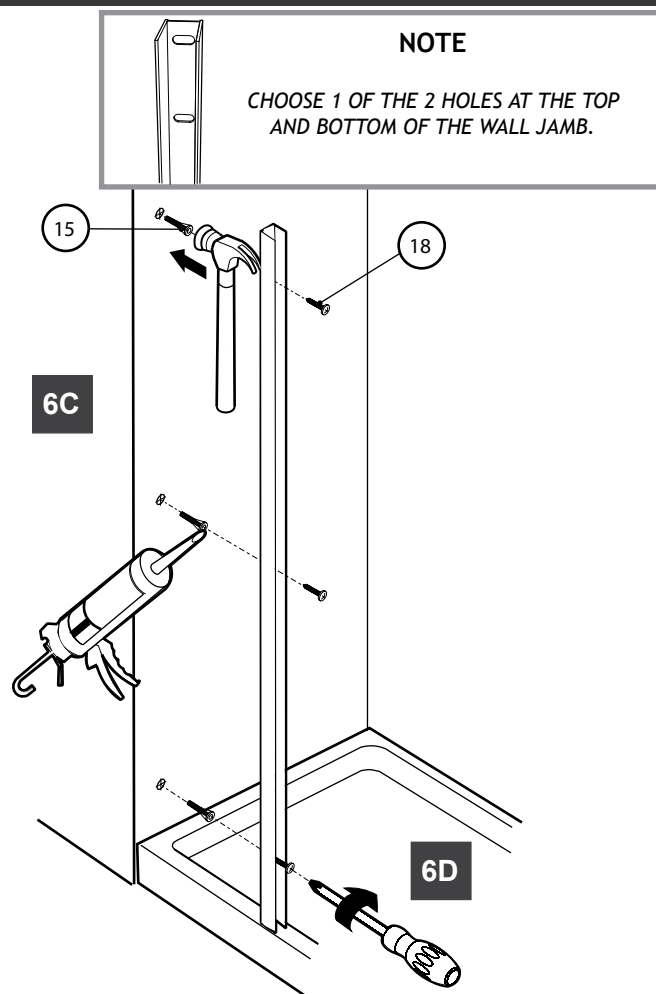


6A. Place the wall jamb (#2) on the center of the threshold and align it using a level. Trace the outer edge of the wall jamb and the holes onto the wall. Remove the wall jamb.

6B. With a 1/4" drill bit, drill 3 holes into the wall using the marks as a guide.

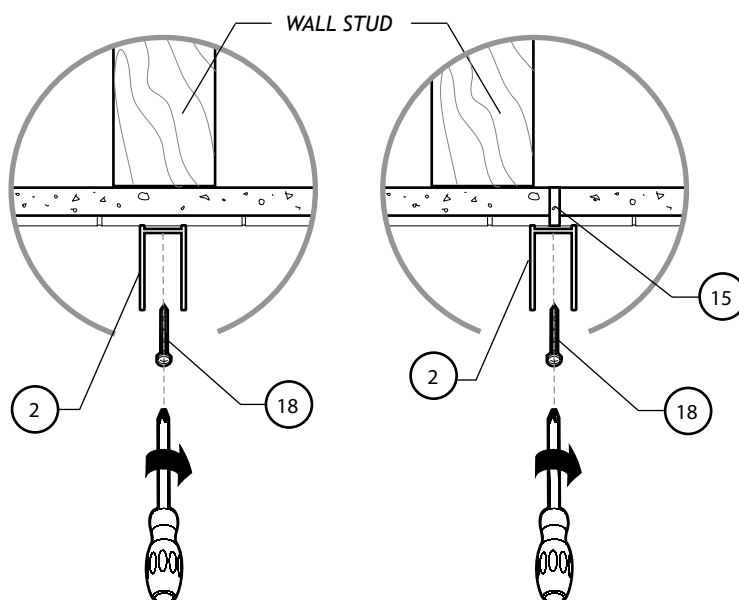
6C. (a) Should you find the wood studs directly behind the drilled hole location, skip this step.  
(b) Insert the wall plugs (#15) and put in each a drop of silicone.

6D. Secure the wall jamb using the 1 1/4" screws (#18).

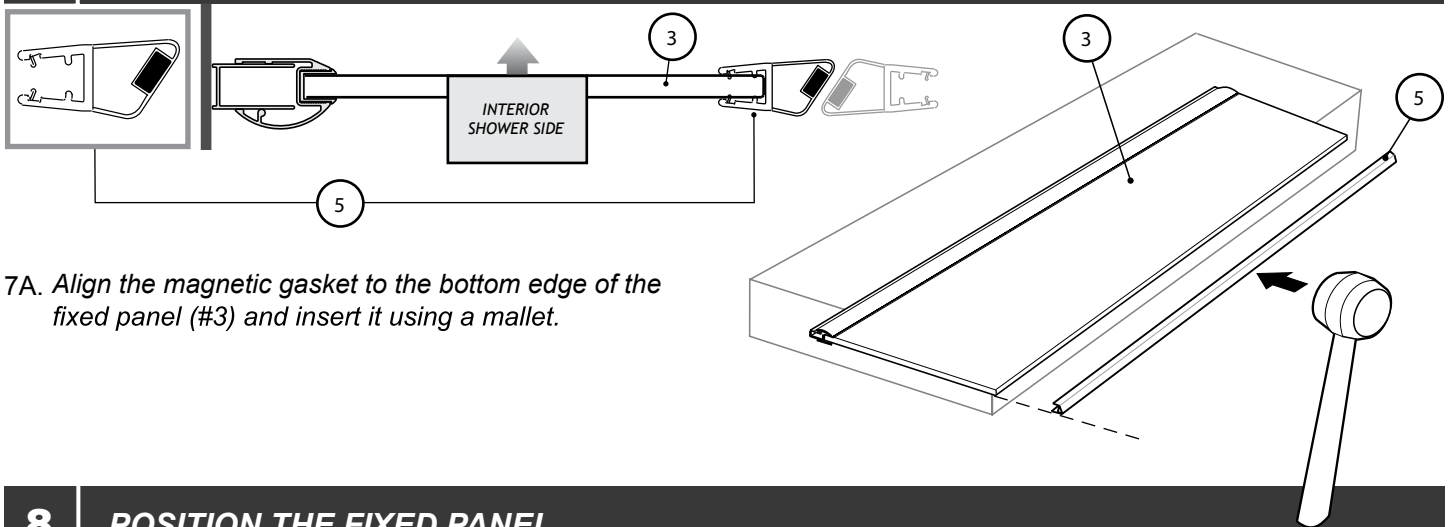


6C(a)  
TOP VIEW

6C(b)  
TOP VIEW

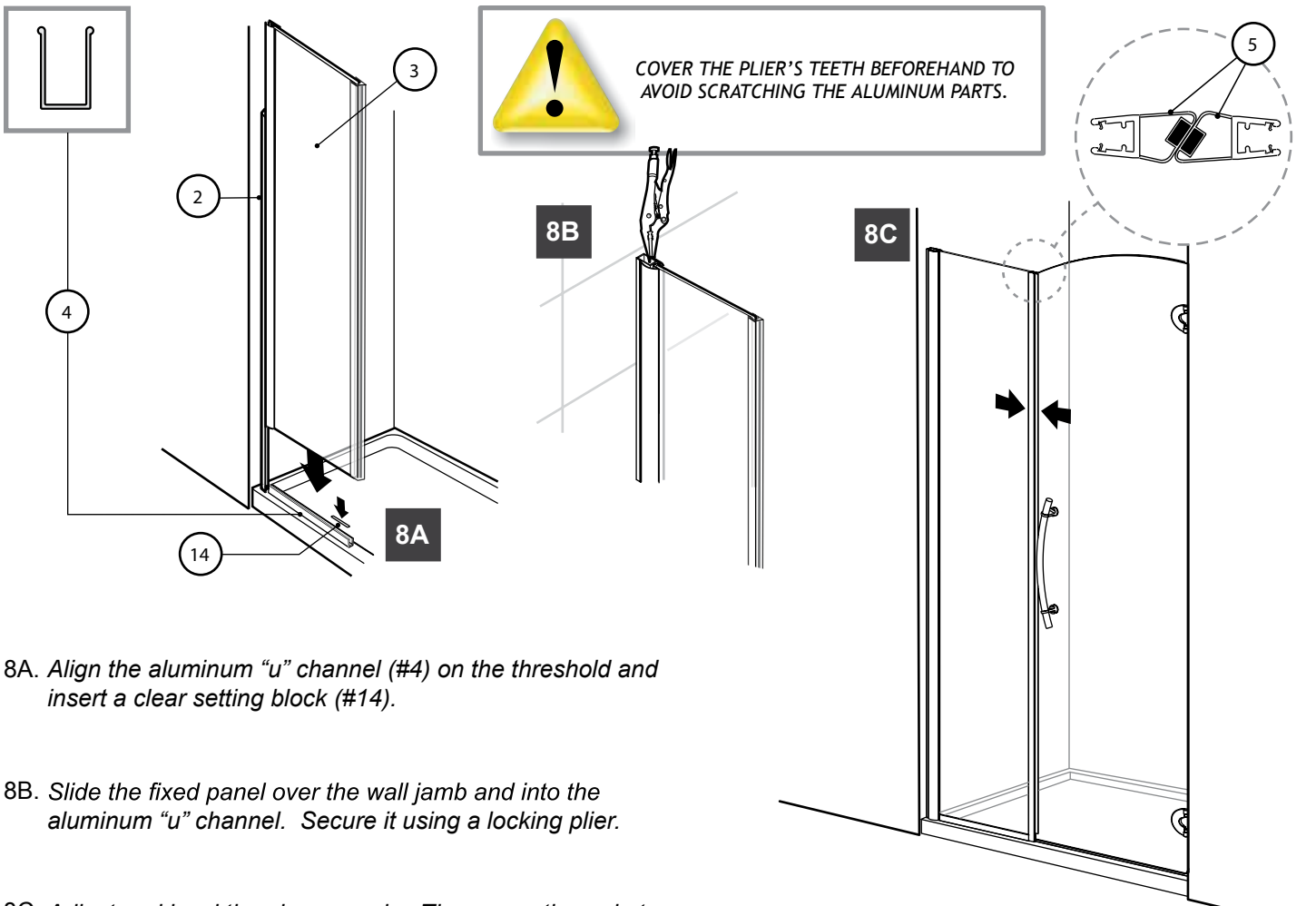


## 7 INSERT THE MAGNETIC GASKET.



7A. Align the magnetic gasket to the bottom edge of the fixed panel (#3) and insert it using a mallet.

## 8 POSITION THE FIXED PANEL.



8A. Align the aluminum “u” channel (#4) on the threshold and insert a clear setting block (#14).

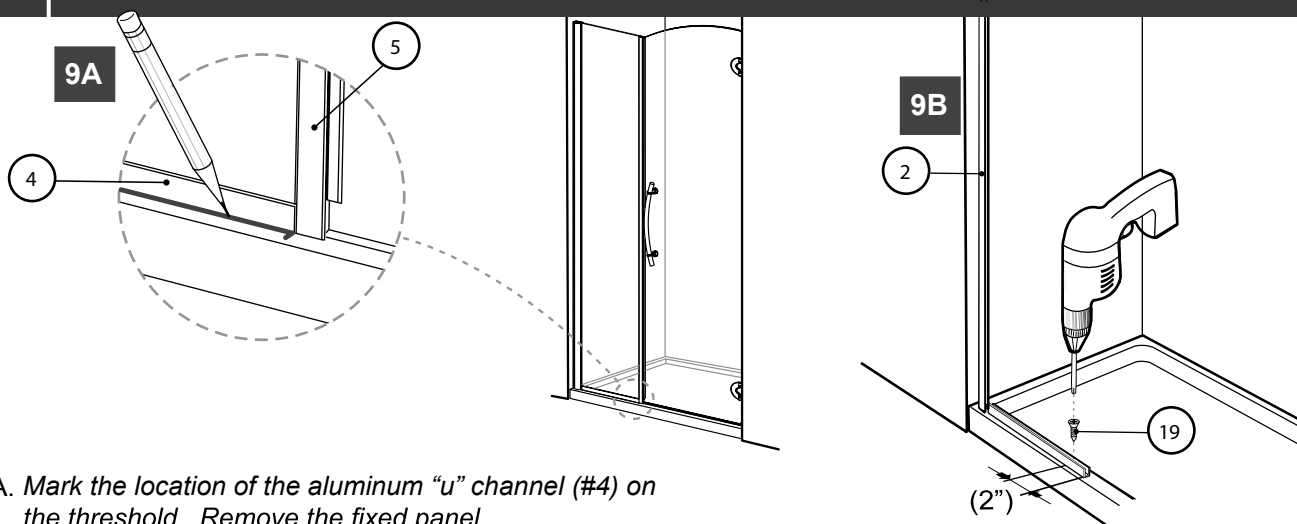
8B. Slide the fixed panel over the wall jamb and into the aluminum “u” channel. Secure it using a locking plier.

8C. Adjust and level the glass panels. The magnetic gaskets must be aligned and in contact.



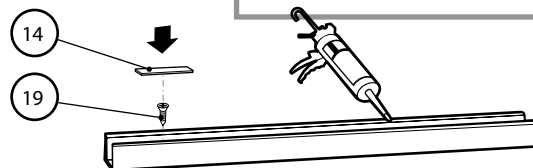
IF MORE ADJUSTMENTS ARE NEEDED, INSERT OTHER SETTING BLOCKS (#13&14) IN THE “U” CHANNEL.

## 9 FASTEN THE "U" CHANNEL.

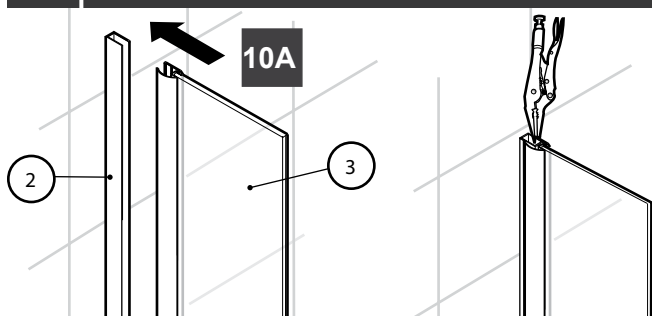


### OPTIONAL

RUN A BEAD OF SILICONE IN THE ALUMINUM "U" CHANNEL.



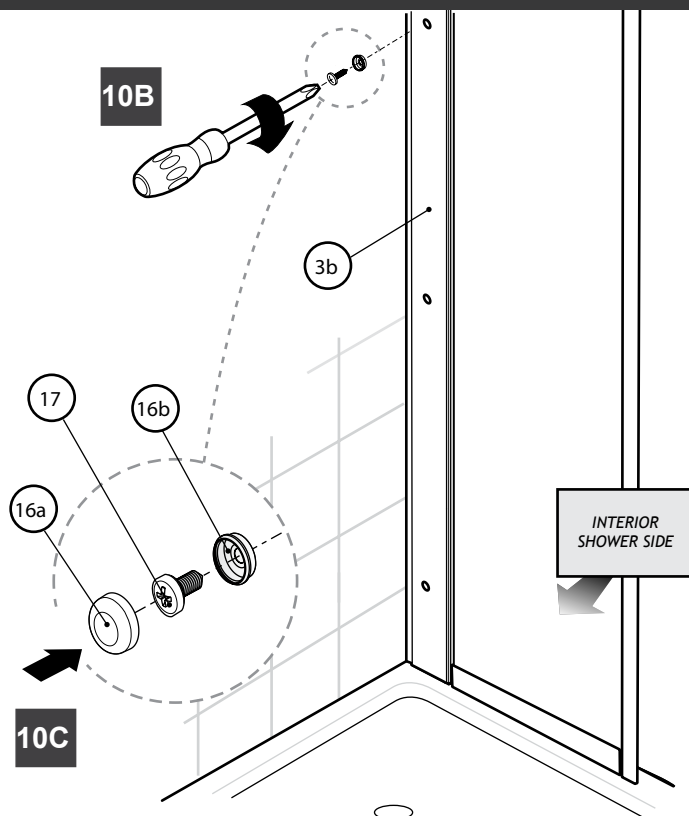
## 10 INSTALL THE FIXED PANEL.



10A. Reposition the fixed panel on the wall jamb and in the aluminum "u" channel. Secure it with the locking plier.

10B. Combine the 3 3/8" screws (#17) with the inner screw caps (#16b). Fasten the fixed panel.

10C. Snap the screw caps (#16a) on the screws.



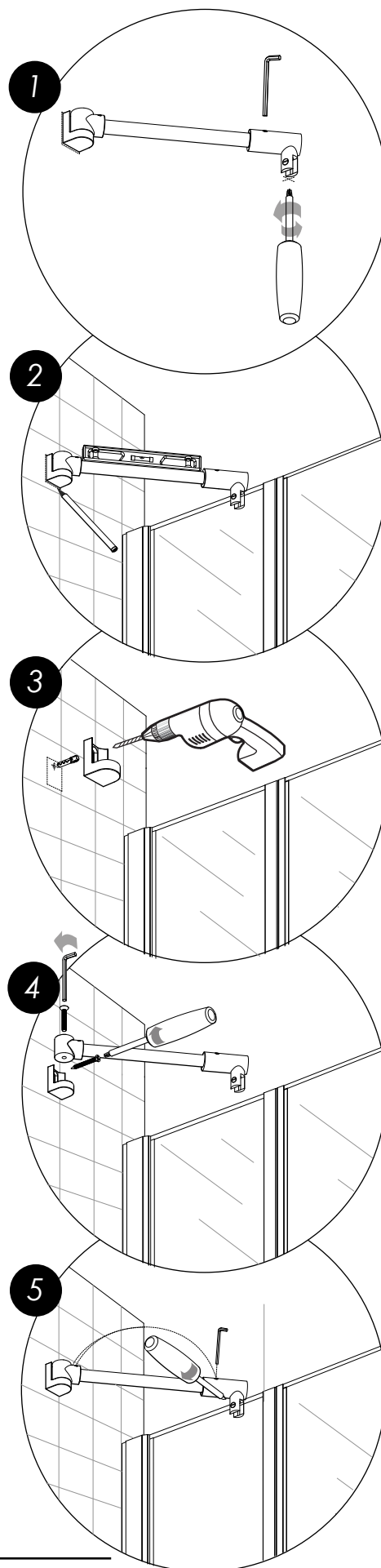
1 Loosen the glass clip (#1d). Align the slot to the fixed panel. The slotted screw head should be on the inside of the shower.

2 Rest the support bar on the fixed panel inside the tub. Level it and trace an arc on the wall.

3 Isolate the wall bracket and drill a hole, using a 1/4" drill bit through the wall. Locate the position of this hole by way of the wall bracket. Insert a wall plug.

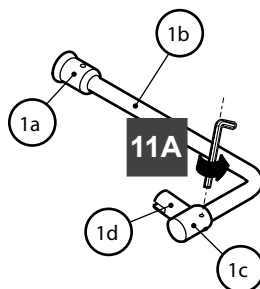
4 Secure the wall bracket to the wall by way of the screw. Assemble the cylindrical joint to the wall bracket.

5 Secure the glass fastener and wall bracket screws to complete the installation process.

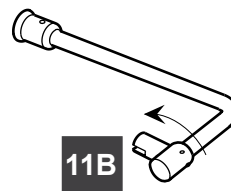


# 11 FASTEN THE SUPPORT BAR.

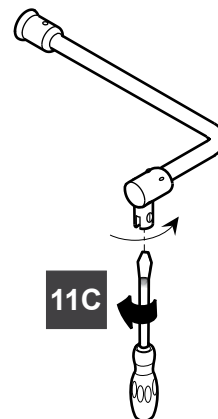
11A. Loosen the set screws in the connector (#1c).



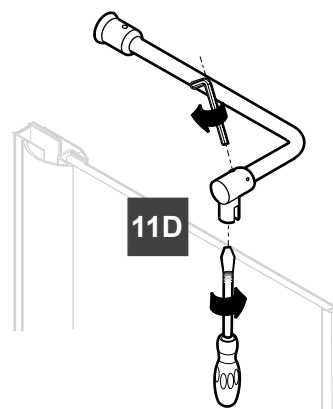
11B. Pivot the connector to orient the glass clip (#1d) towards the fixed panel.



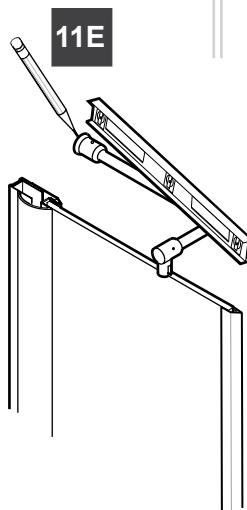
11C. Unscrew the glass clip. Align the slotted hole to the fixed panel. The slotted screw head should be on the inside of the shower.



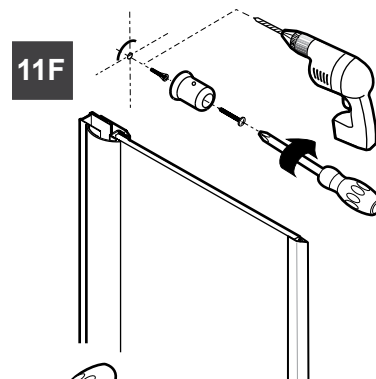
11D. Tighten all the screws.



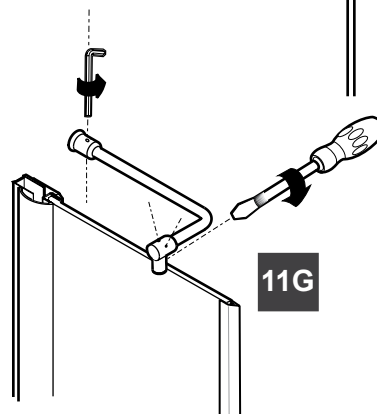
11E. Rest the support bar (#1) on the fixed panel inside the shower. Level it and trace an arc on the wall.



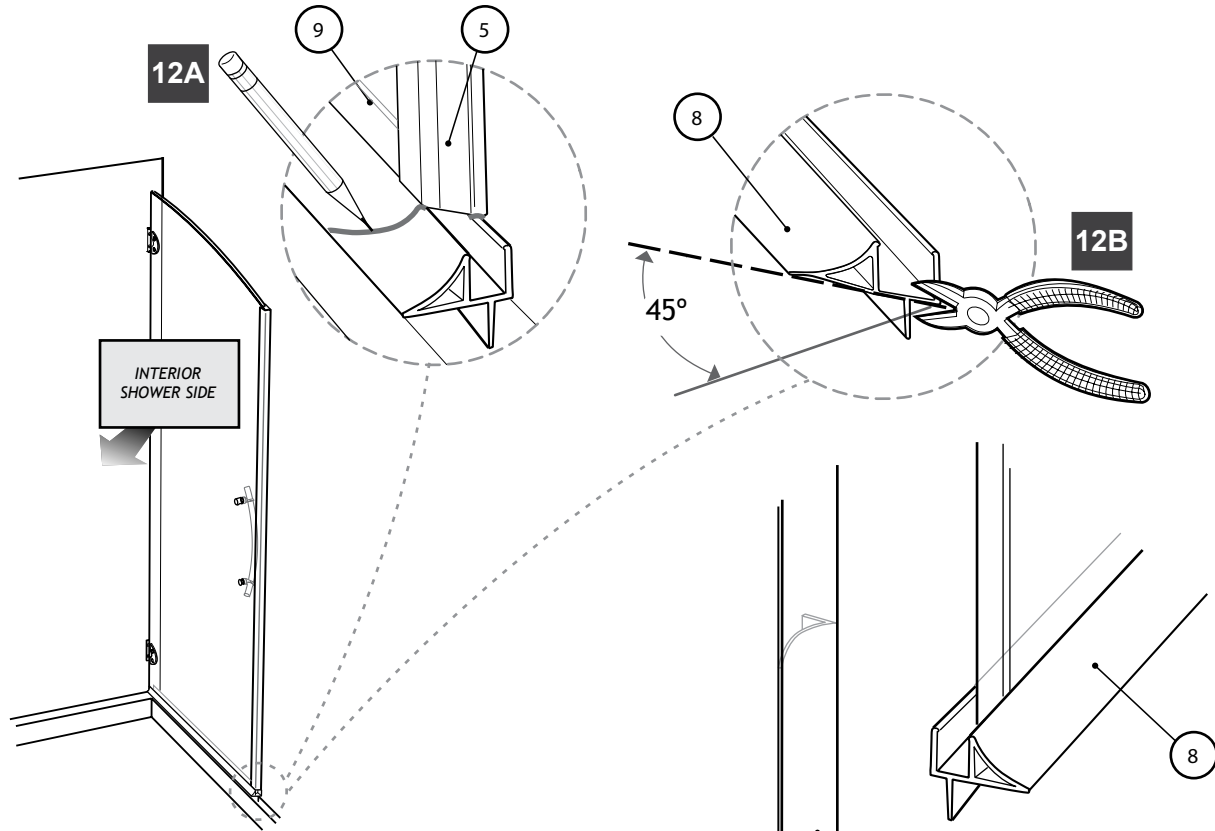
11F. Locate the screw position using the cylindrical part. With a 1/4" drill bit, drill a hole in the wall and insert a wall plug (#15).



11G. Put the bar back in place. Tighten all the screws.

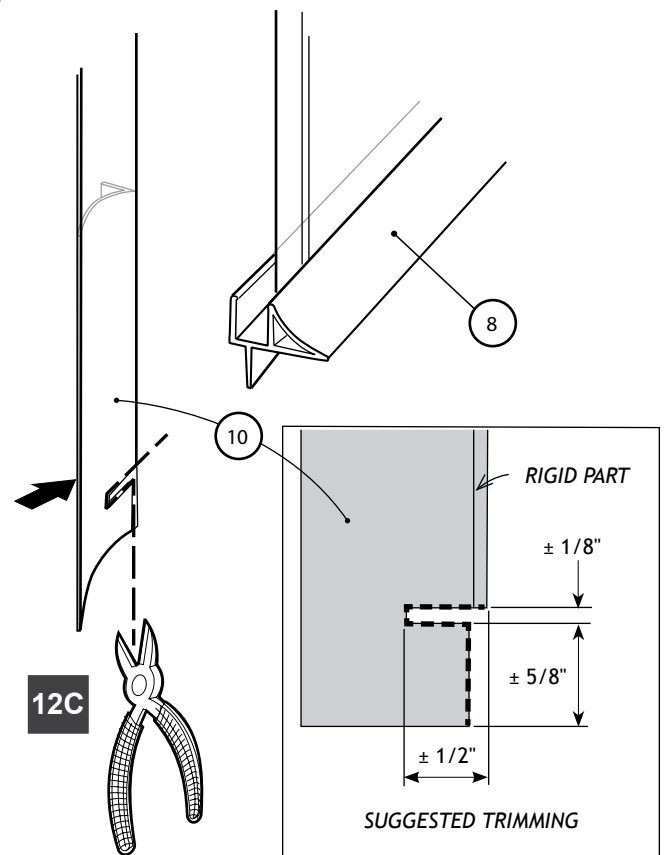


## 12 INSTALL THE DOOR GASKETS.



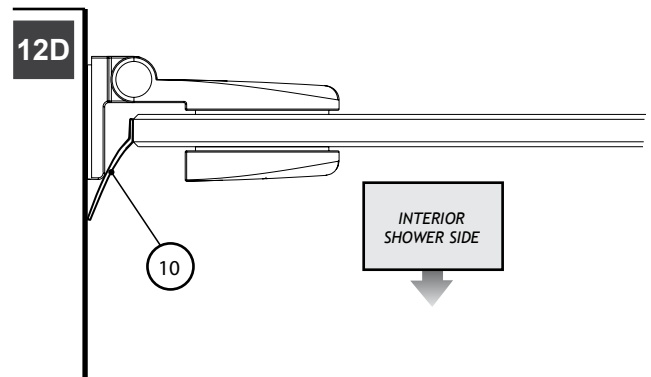
12A. Align the bottom door gasket (#8) to the wall and project on it the 45° magnetic gasket (#5) surface.

12B. Using the cutting plier, trim the bottom door gasket at 45°, making it flush with the magnetic gasket.

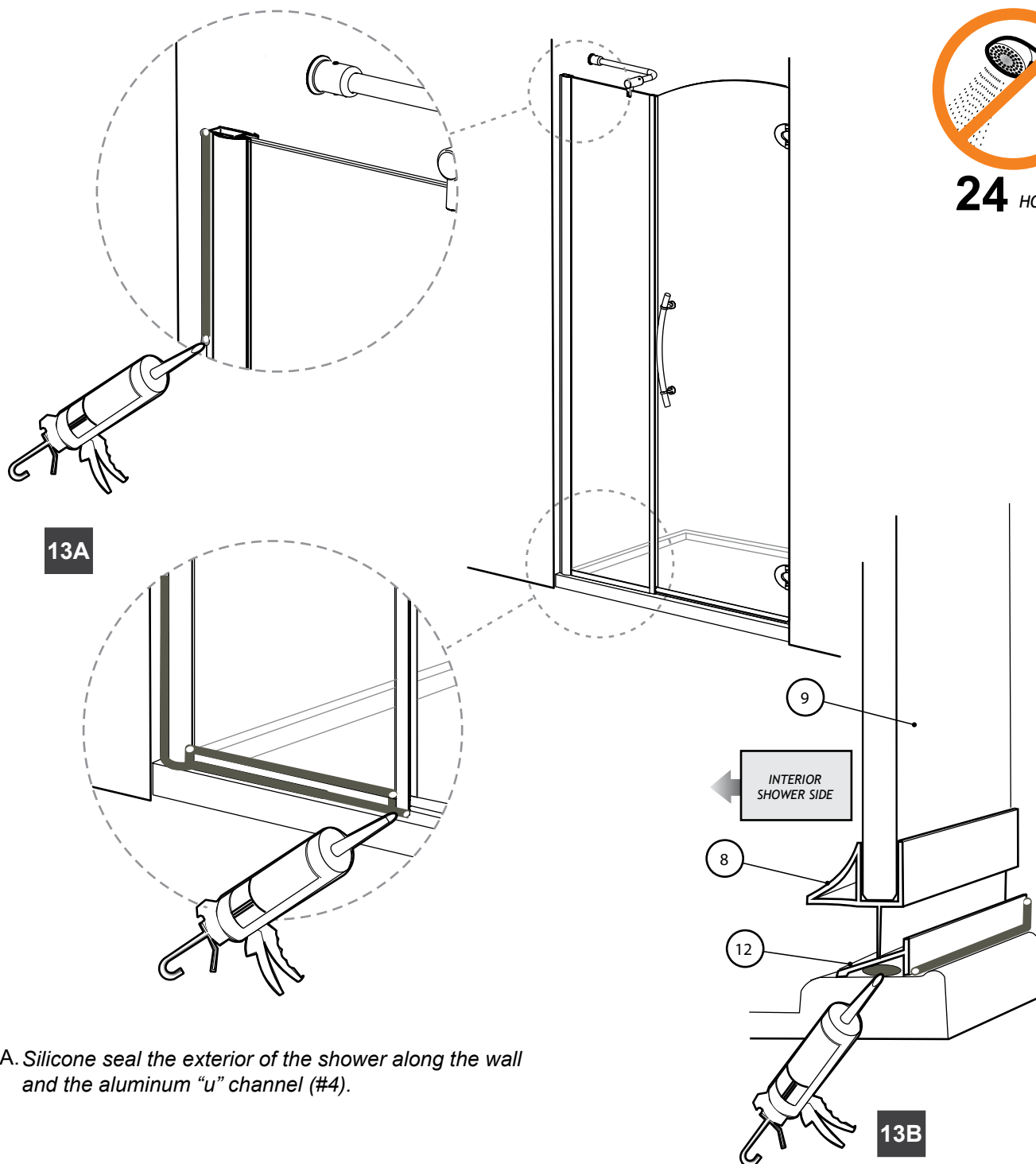


12C. Open the door and clean the door panel surface on which the door side gasket (#10) will be placed. Align it to the threshold and notch it to fit the bottom door gasket. Make sure it is oriented as illustrated.

12D. Stick the door side gasket on the door panel.



# 13 SILICONE SEAL THE SHOWER.



13A. Silicone seal the exterior of the shower along the wall and the aluminum “u” channel (#4).

13B. Position the threshold (#12) under the door panel as illustrated. Lift it to pass a bead of silicone underneath. Apply silicone on the outside edges.



WE RECOMMEND TO HOLD THE THRESHOLD (#12) IN PLACE WITH TAPE WHILE DRYING.