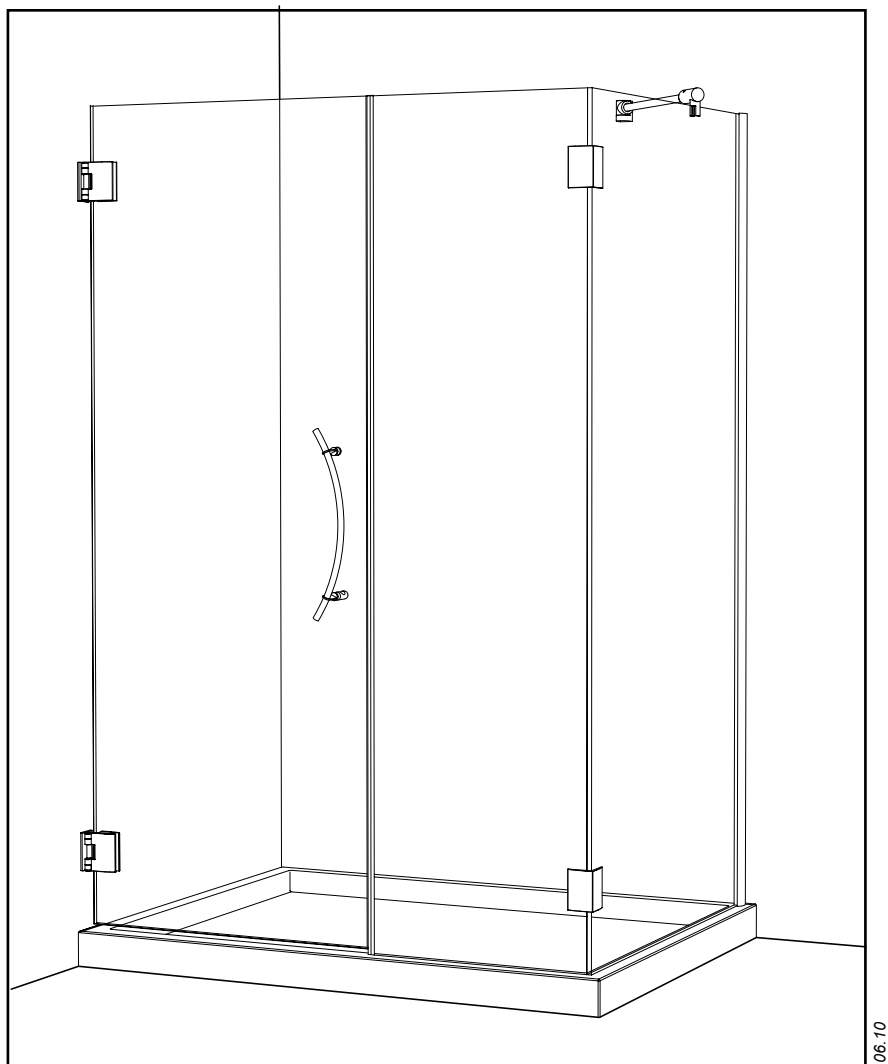


M-DP93X
INSTRUCTION MANUAL

ALUMAX
Moana Collection



☐ *Custom Order*

FINISH

- ☐ 11- *Bright Chrome*
- ☐ 12- *Bright Brass*
- ☐ 25- *Brushed Nickel*
- ☐ 29- *Oil Rubbed Bronze*

GLASS

- ☐ 40- *Clear*

*Please keep this manual and product code number for future reference
and to order replacement parts if necessary.*

Product specifications are subject to change without notice.

- **Table of Contents**

MODEL NUMBER.....	2
GENERAL INSTRUCTIONS	3
INSTALLATION OVER CERAMIC TILES.....	3
NOTICE	3
CARE FOR YOUR FRAMELESS SHOWER DOOR.....	3
PARTS LISTING.....	4
PROVIDED HARDWARE.....	5
REQUIRED TOOLS AND MATERIALS	5
CHART A.....	6
CHART B	7
1. DETERMINE HINGES LOCATION.	8
2. FASTEN THE HINGES TO THE WALL.	9
3. PREASSEMBLE THE DOOR.....	9
4. INSTALL THE DOOR PANEL.....	10
5. INSTALL THE DOOR HANDLE.	10
6. INSTALL THE DOOR GASKETS.	11
7. MOUNT THE WALL JAMB.	12
8. POSITION THE RETURN PANEL.	13
9. POSITION THE FIXED PANEL.	13
10. ADJUST THE GLASS PANELS.....	14
11. FASTEN THE BOTTOM GLASS CLIPS.....	15
12. FASTEN THE RETURN PANEL.	15
13. FASTEN THE PIVOT SUPPORT BAR.	16
14. SILICONE SEAL THE SHOWER.	17

- **General Instructions**

- Read this manual carefully and completely before proceeding.
- It is recommended that you wear safety glasses at all times during the installation.

- **Installation over Ceramic Tiles**

- Silicone should be used to seal the gap where the ceramic tiles meet the fixed panel.
- If your shower door is to be installed over ceramic tiles, the tiles should lay completely under the wall jamb.

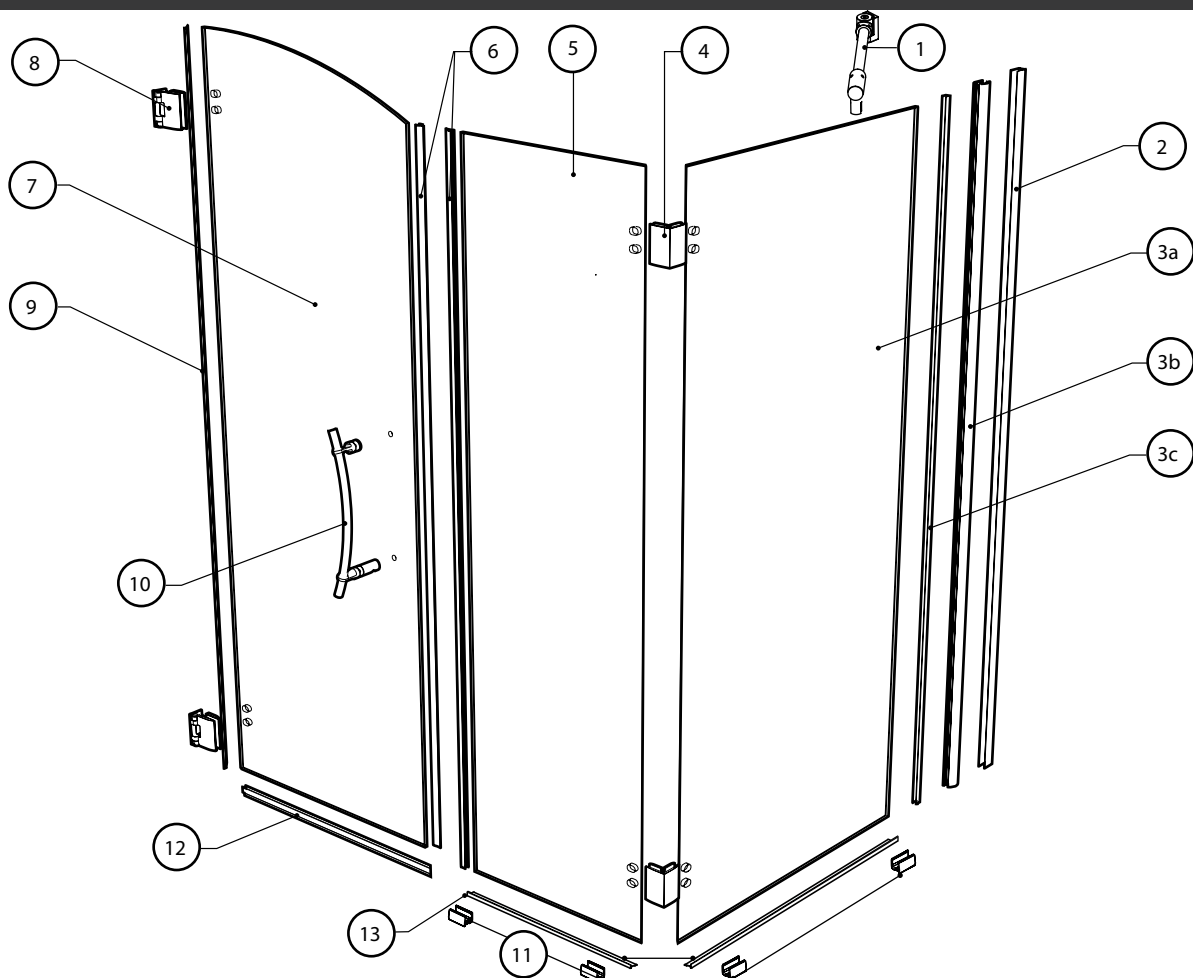
- **Notice**

- Caulking: no sealant is required inside the shower.
- All models are equipped with transparent sealing gaskets.

- **Care for your Frameless Shower Door**

- Never use scouring powder pads or sharp instruments on metal pieces or glass panels.
An occasional wiping down with a mild soap diluted in water is all that is needed to keep the panels and aluminum parts looking new.
- We recommend wiping the glass panels with a squeegee after each use.

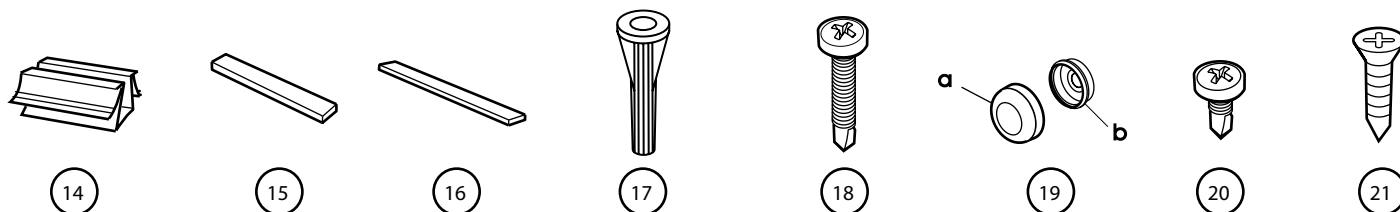
PARTS LISTING



ITEM	PARTS	QTY
1	PIVOT SUPPORT BAR	1
2	WALL JAMB- TEMPLATE	1
3a	RETURN PANEL	1
3b	EXPANDER	1
3c	GASKET	1
4	CORNER CLIP	2
5	SIDE PANEL WITH CORNER CLIP	1
6	MAGNETIC DOOR GASKET	2
7	DOOR PANEL	1
8	SQUARE WALL-MOUNT HINGE	2
9	SIDE PANEL GASKET	1
10	CURVED HANDLE	1
11	BOTTOM GLASS CLIP	1
12	BOTTOM DOOR GASKET	1
13	THRESHOLD	1

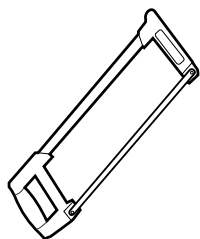
*on page #6

PROVIDED HARDWARE



14	SPACING BLOCKS	2
15	CLEAR SETTING BLOCK	2
16	CLEAR SETTING BLOCK	2
17	WALL PLUG	4
18	SELF DRILLING SCREW #8 - 1 1/4"	3
19	SCREW CAP	4
20	SELF DRILLING SCREW #8 - 3/8"	3
21	FLAT HEAD SCREW #6 - 3/4"	2

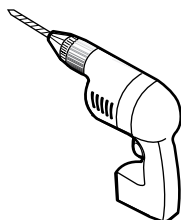
REQUIRED TOOLS AND MATERIALS



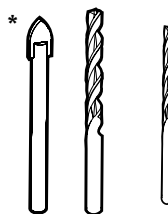
HACKSAW



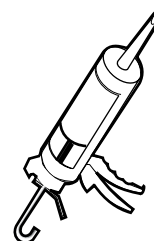
SCREWDRIVERS



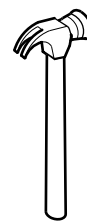
DRILL



1/4" & 1/8" DRILL BITS



SILICONE

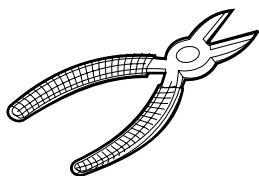


HAMMER

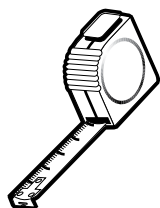
* If the shower panels are to be assembled on ceramic tiles, use a 1/4" drill bit for ceramic tiles.



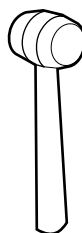
PENCIL



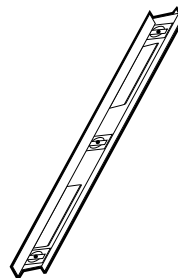
CUTTING PLIER



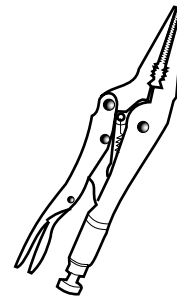
TAPE MEASURE



Mallet



LEVEL

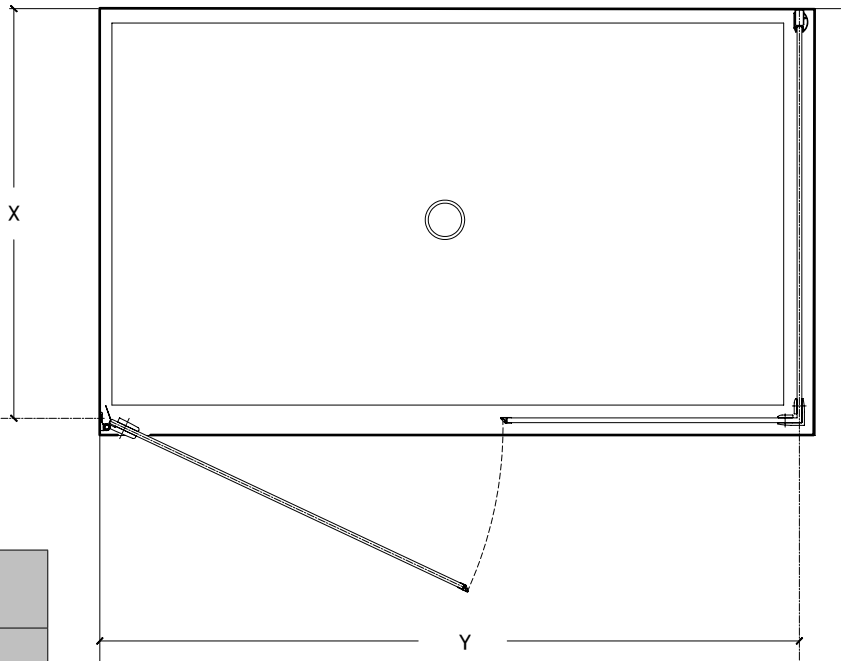


LONG NOSE LOCKING PLIER

CHART A

MODEL (PXKRP*)	RETURN PANEL	SIDE PANEL WITH CORNER CLIP	DOOR PANEL	ALUMINUM "U" CHANNEL	BOTTOM DOOR GASKET	THRESHOLD
42	(32 5/8" X 70")	(20 7/16" X 70")	(20 3/16" x 75")	A=32 11/16" @ 45° B=20 1/2" @ 45°	21 1/2"	22"
43			(21 3/16" x 75")		22 1/2"	23"
44			(22 3/16" x 75")		23 1/2"	24"
45			(23 3/16" x 75")		24 1/2"	
46			(24 3/16" x 75")		25 1/2"	26"
47			(25 3/16" x 75")		26 1/2"	27"
48			(26 3/16" x 75")		27 1/2"	28"
49			(27 3/16" x 75")		28 1/2"	29"
50			(28 3/16" x 75")		29 1/2"	30"
51			(29 3/16" x 75")		30 1/2"	31"
52			(30 3/16" x 75")		31 1/2"	32"
53			(31 3/16" x 75")		32 1/2"	32"
54			(32 3/16" x 75")		33 1/2"	34"
55	(32 5/8" X 70")	(24 3/8" X 70")	(29 3/16" x 75")	A=32 11/16" @ 45° B=24 7/16" @ 45°	30 1/2"	31"
56			(30 3/16" x 75")		31 1/2"	32"
57			(31 3/16" x 75")		32 1/2"	32"
58			(32 3/16" x 75")		33 1/2"	34"

WALL TO HINGES



WALL TO CENTER OF RETURN PANEL

CHART B

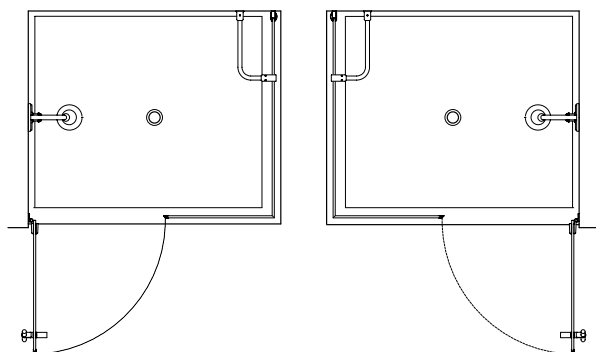
MODEL	DIMENSIONS	
	X	Y
42	33 3/4"	41 13/16"
43		42 13/16"
44		43 13/16"
45		44 13/16"
46		45 13/16"
47		46 13/16"
48		47 13/16"
49		48 13/16"
50		49 13/16"
51		50 13/16"
52		51 13/16"
53		52 13/16"
54		53 13/16"
55	33 3/4"	54 11/16"
56		55 11/16"
57		56 11/16"
58		57 11/16"

1 DETERMINE HINGES LOCATION.

LEFT CONFIGURATION

1A

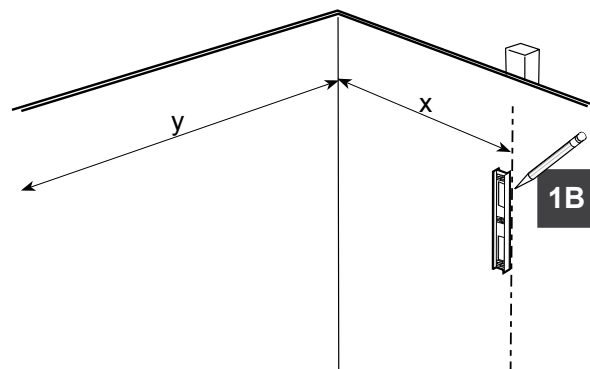
RIGHT CONFIGURATION



USE THE WALL JAMB (#2) AS TEMPLATE
TO MARK DRILLING LOCATIONS FOR
WALL-MOUNTED HINGES.



WALL-MOUNTED HINGES MUST BE SUPPORTED
AND FASTENED INTO A STUD FRAMING.

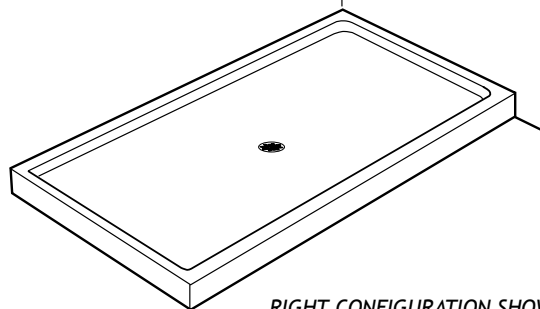


1A. Determine on which side the hinges will be mounted.

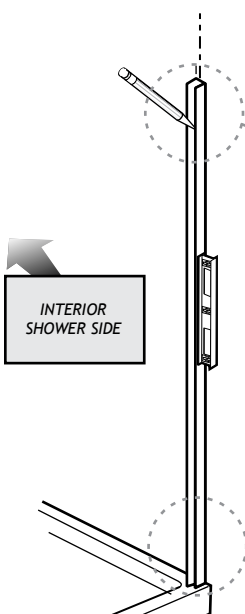
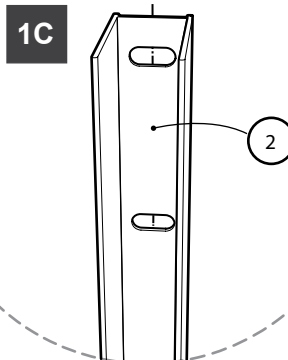
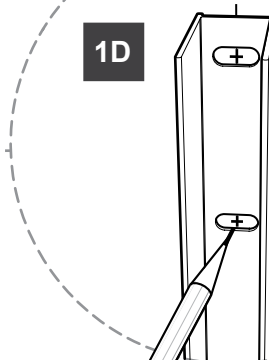
1B. Trace the hinge locations by referring to the "x" dimension on page 7. Run it up the wall.

1C. Place the wall jamb (#2) on the threshold by centering the slotted holes with the centerline.

1D. Mark the drilling locations at the top and bottom of the wall jamb. Drill a hole at each location with a 1/4" drill bit.



RIGHT CONFIGURATION SHOWN

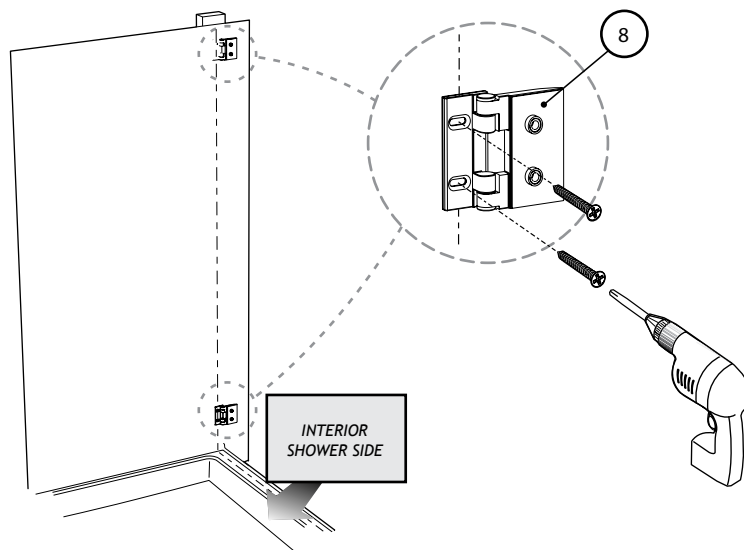
**1C****1D**

2 FASTEN THE HINGES TO THE WALL.



NEVER PLACE THE GLASS DIRECTLY ON THE FLOOR.

2A. Fasten the hinges (#8) to the wall as illustrated.

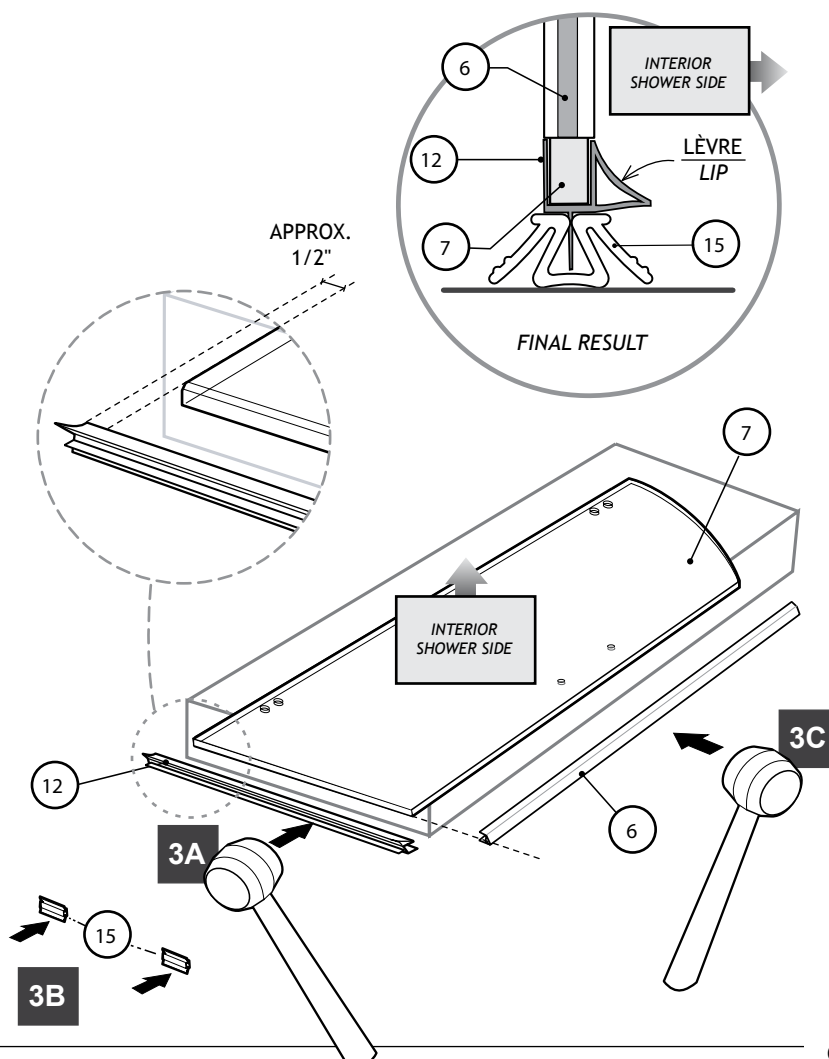


3 PREASSEMBLE THE DOOR.

3A. Rest the door panel (#7) on a flat surface. Temporarily insert the bottom door gasket (#13) under the door panel.

3B. Install the 2 spacing blocks (#15) onto the bottom lip of the gasket.

3C. Place the magnetic gasket (#6) on top of the bottom door gasket (#12) and insert it on the door panel using a mallet.



FOR MORE DETAILS ON HOW THE GASKETS MEET, REFER TO PAGE 11.

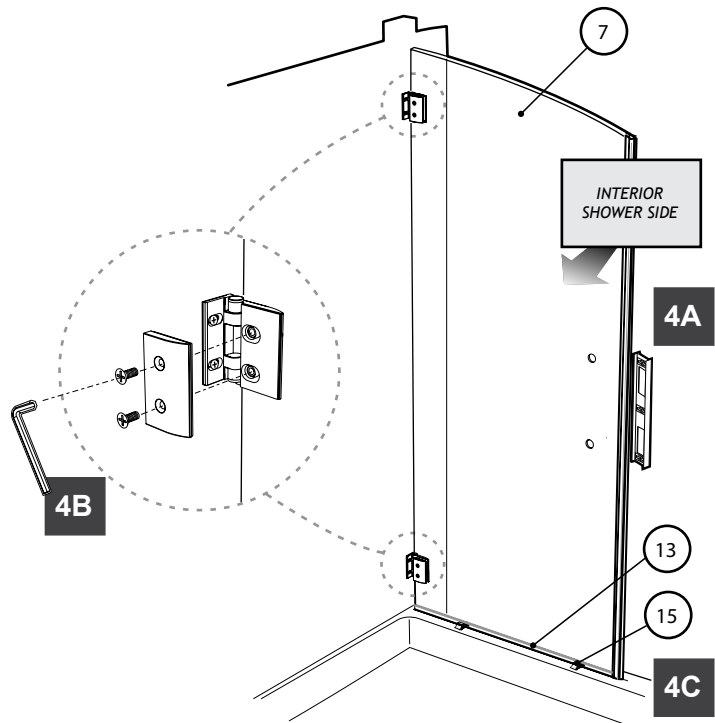
4**INSTALL THE DOOR PANEL.**

IT IS BEST TO HAVE 2 PEOPLE
WORKING ON THIS STEP.

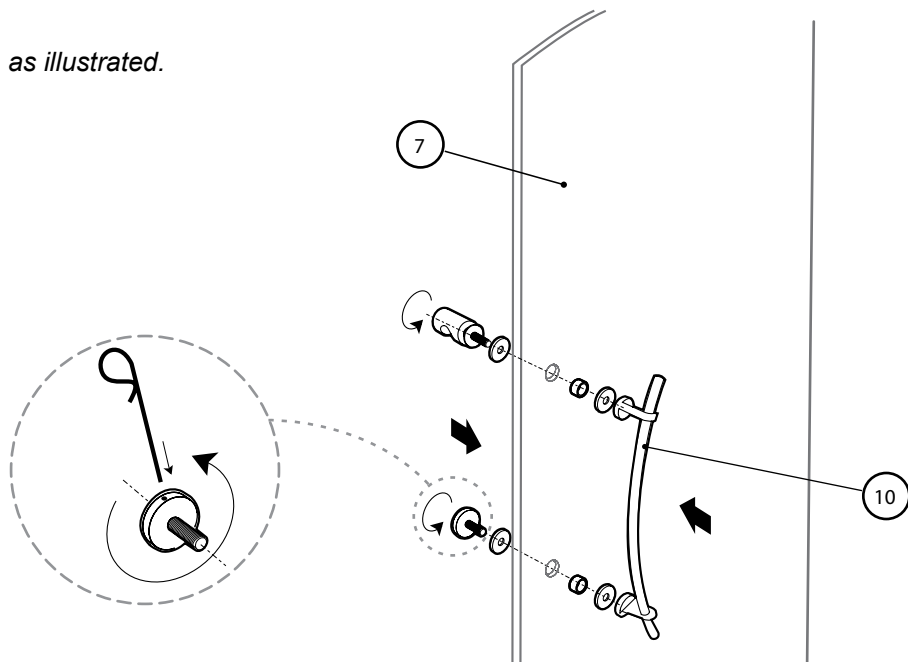
4A. Place the door assembly on the shower threshold and level it.

4B. Fasten the hinges as illustrated using the Allen key.

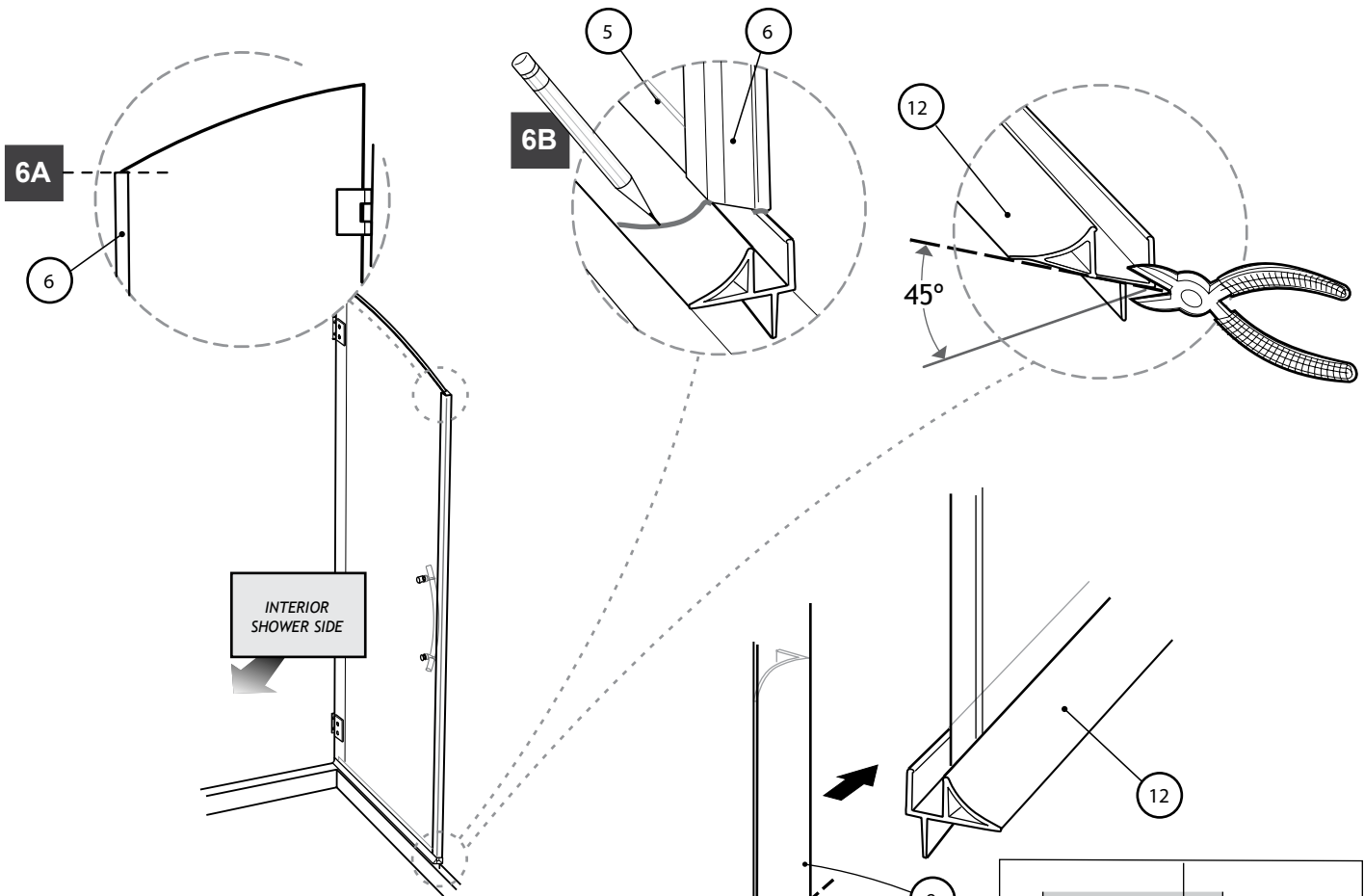
4C. Remove the leveling blocks (#15) and the bottom door gasket.

**5****INSTALL THE DOOR HANDLE.**

5A. Install the curved handle (#10) as illustrated.

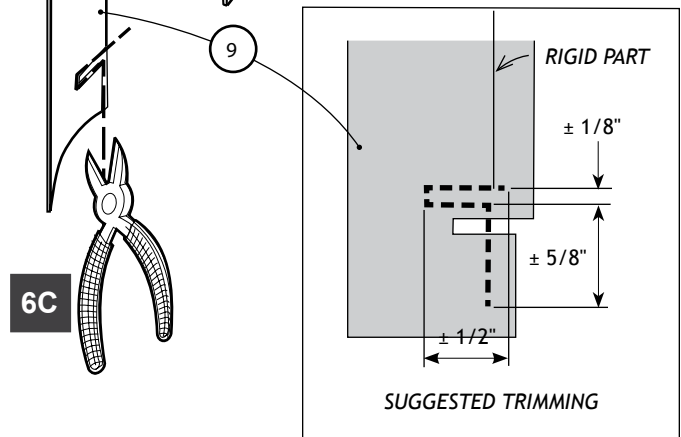


6 INSTALL THE DOOR GASKETS.



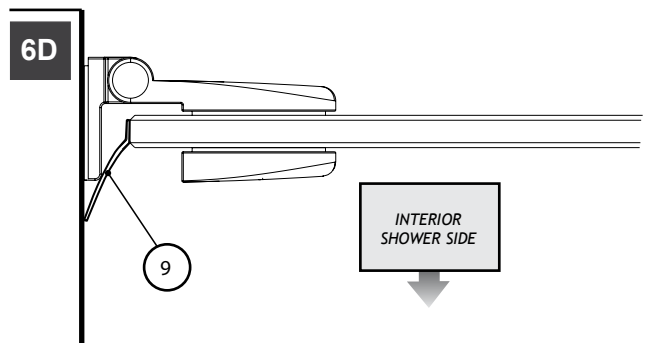
6A. With the cutting pliers, trim the top of the magnetic gasket (#6) as illustrated.

6B. Project the 45° magnetic gasket surface on to the bottom door gasket (#13). Trim the bottom door gasket.

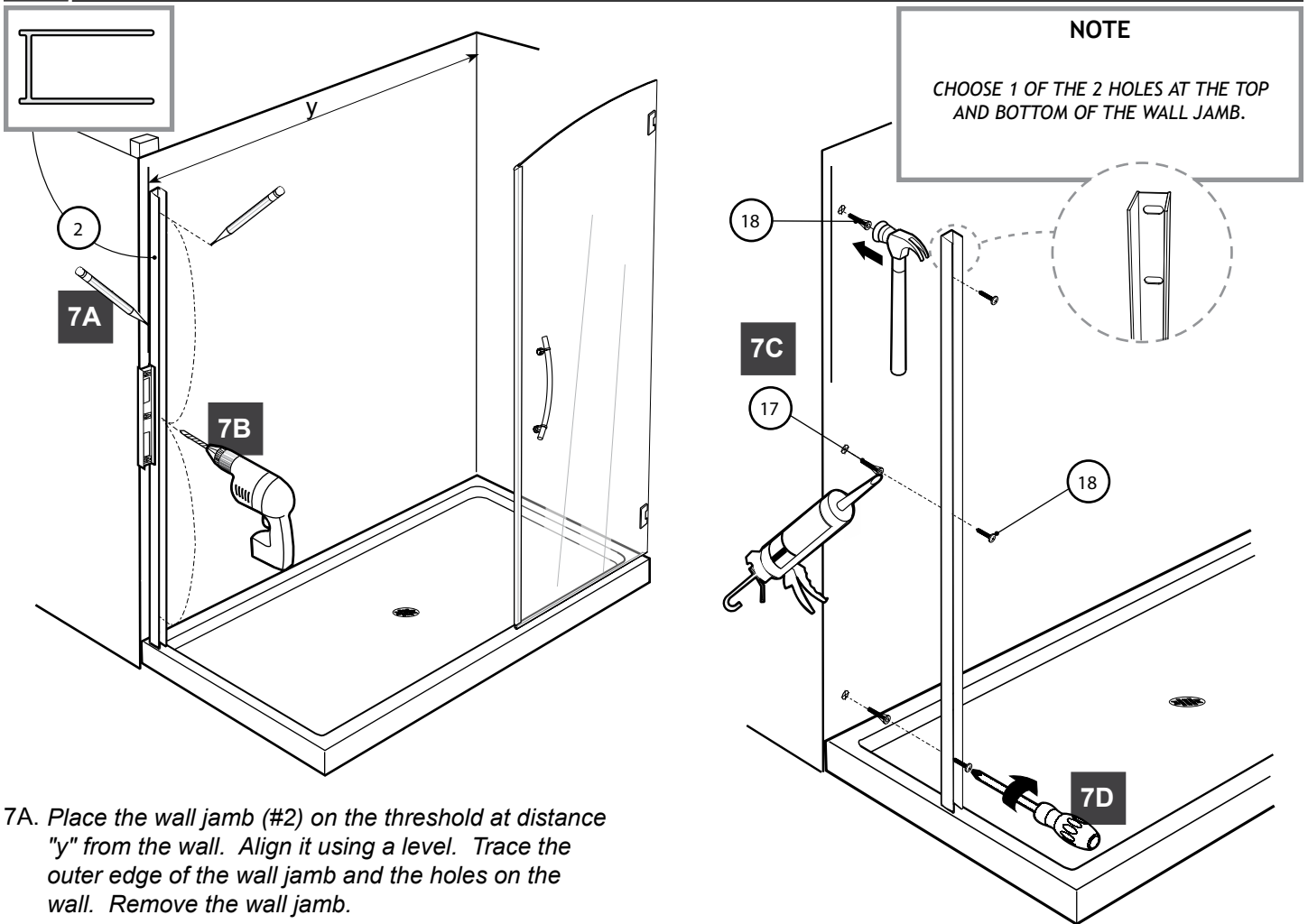


6C. Open the door and clean the door panel surface on which the door side gasket (#9) will be placed. Align it to the threshold and notch it to fit the bottom door gasket. Make sure it is oriented as illustrated.

6D. Stick the door side gasket on the door panel.



7 MOUNT THE WALL JAMB.



7A. Place the wall jamb (#2) on the threshold at distance "y" from the wall. Align it using a level. Trace the outer edge of the wall jamb and the holes on the wall. Remove the wall jamb.

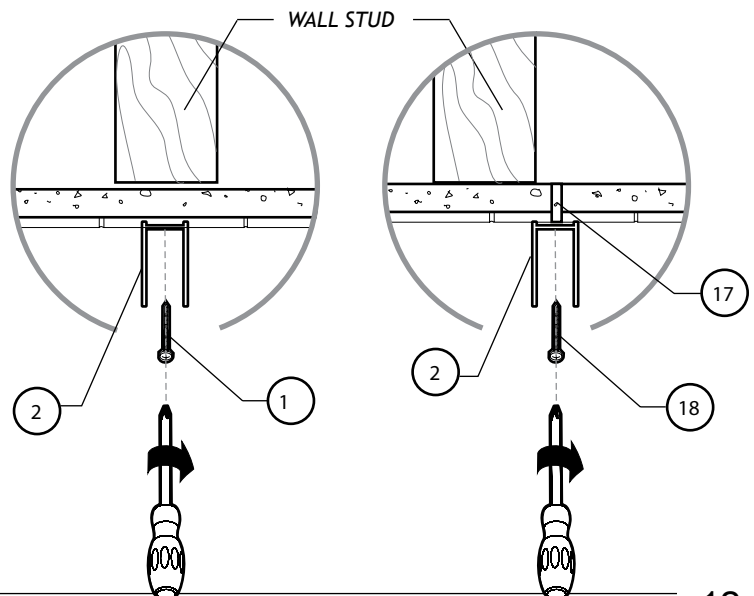
7B. With a 1/4" drill bit, drill 3 holes into the wall using the marks as a guide.

7C. (a) Should you find the wood studs directly behind the drilled hole location, skip this step.
(b) Insert the wall plugs (#17) and put in each a drop of silicone.

7D. Secure the wall jamb using the 1 1/4" screws (#18).

7C(a)
TOP VIEW

7C(b)
TOP VIEW



8 POSITION THE RETURN PANEL.

8A. Position the bottom glass clips (#11) as well as the threshold (#13) as shown.

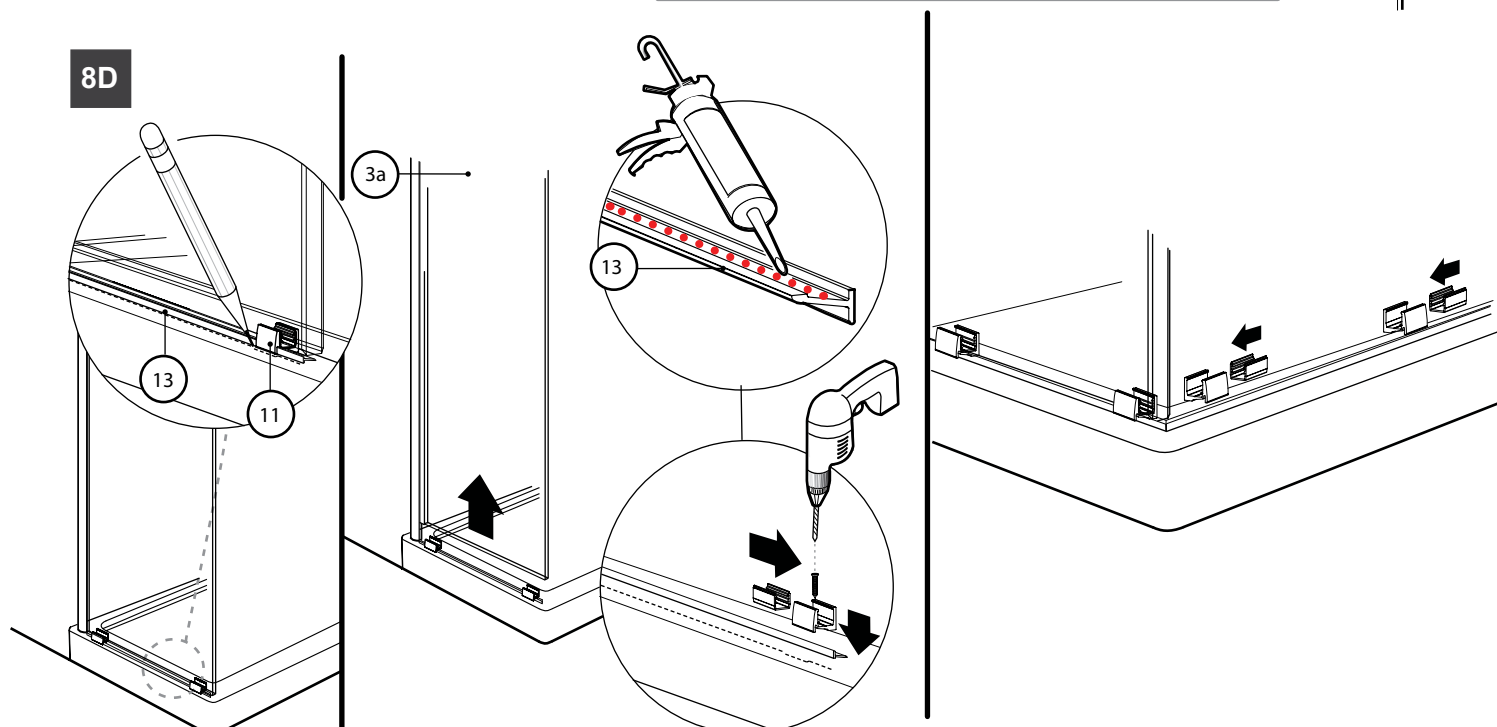
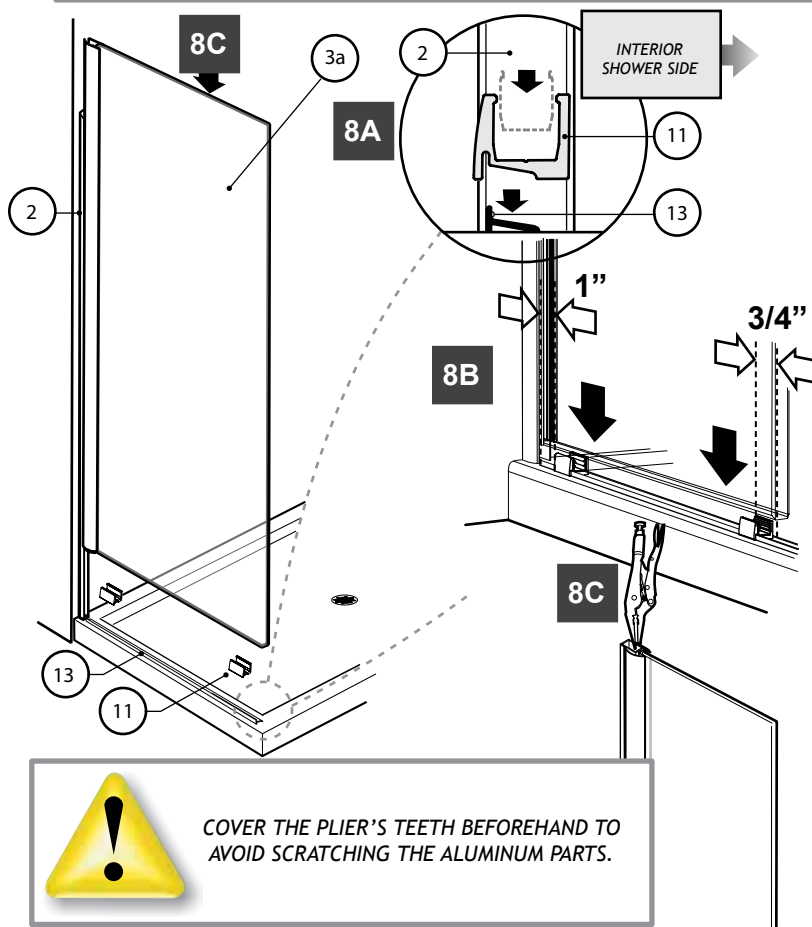
8B. Slide the return panel (#3a) within the bottom glass clips as shown.

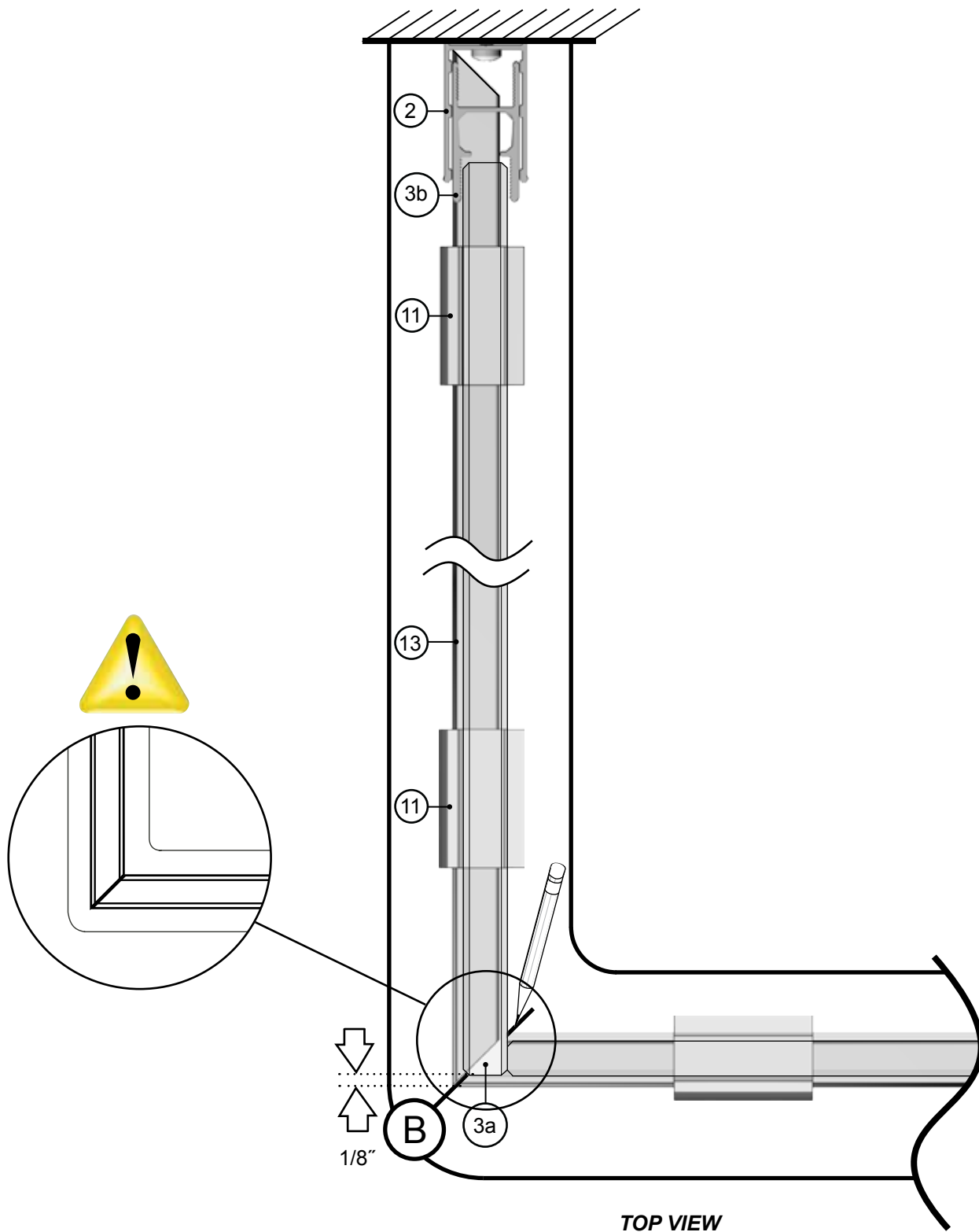
8C. Temporarily secure the return panel using a locking plier.

8C. Temporarily secure the return panel using a locking plier.

8D. Removal of the return panel is required prior to this. Trace an outline of the bottom glass clips prior to securing them on the threshold. Ensure that silicone is applied to the bottom of the threshold.

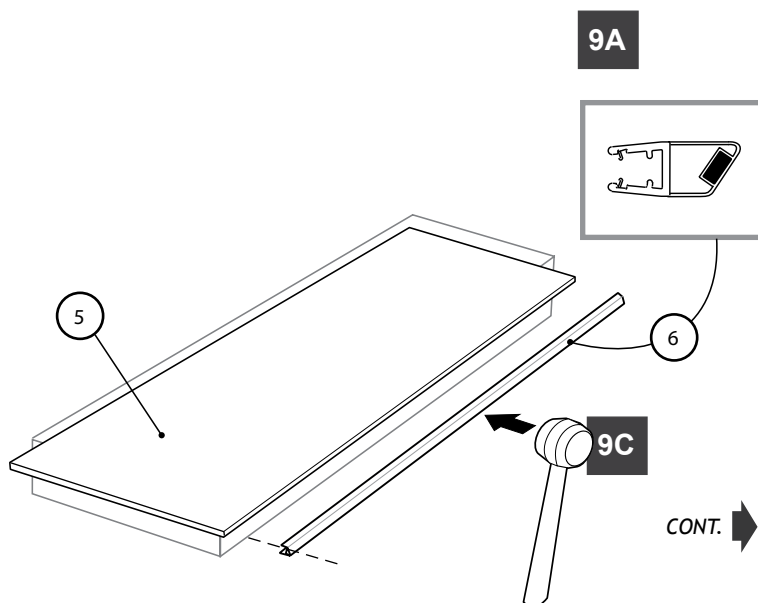
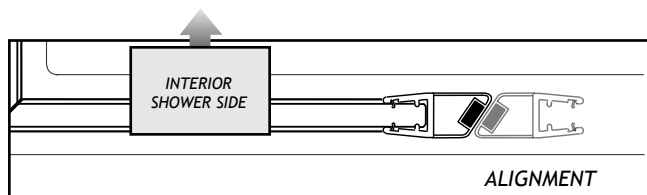
REFER TO FOLLOWING PAGE



8 POSITION THE RETURN PANEL.

9 POSITION THE FIXED PANEL.

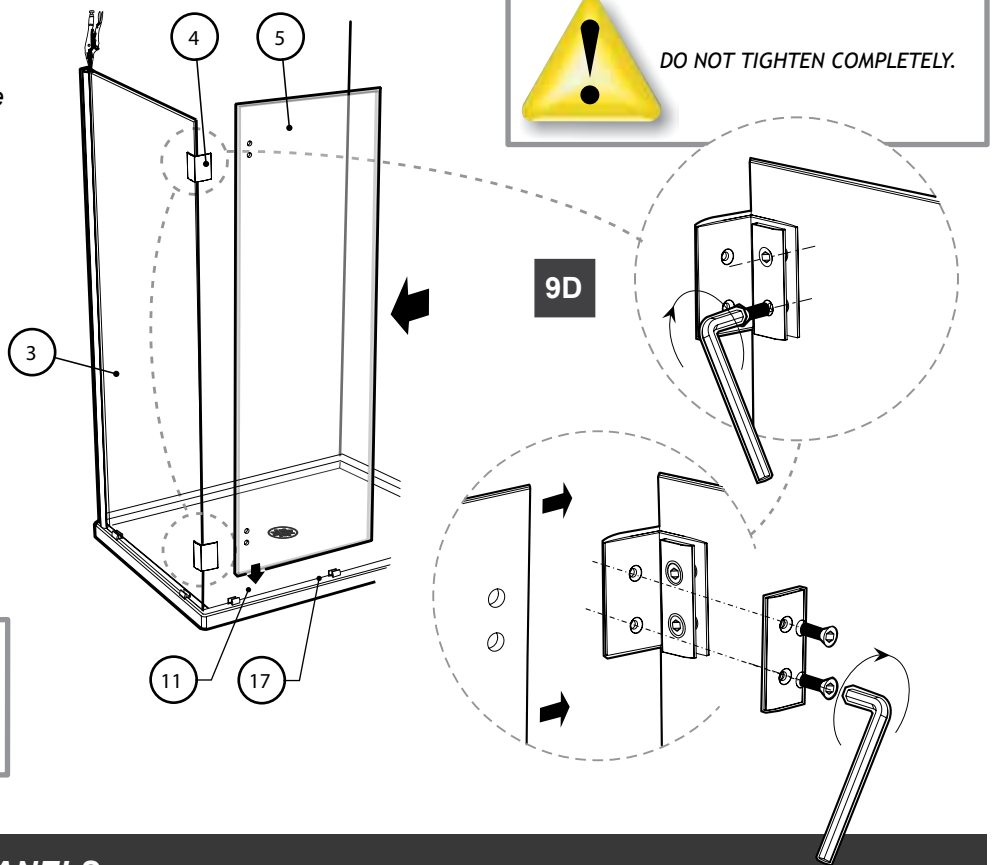
9A. Align the magnetic gasket (#6) to the bottom edge of the fixed panel (#5) and insert it using a mallet.



9 (CONT.)

9D. Install the corner clips (#4) and the fixed panel (#5) as illustrated.

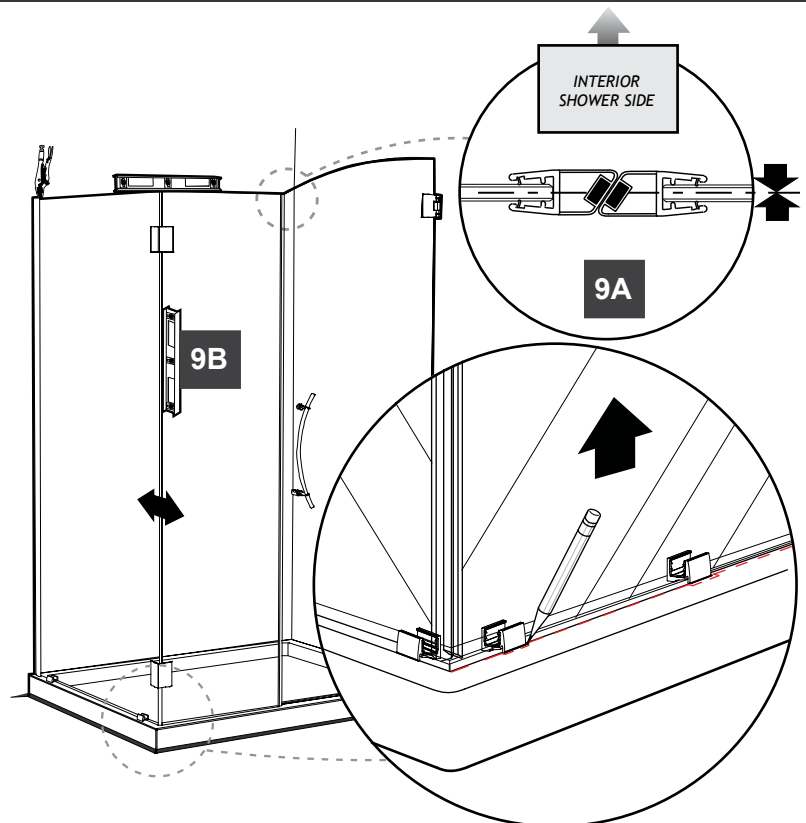
9D. Position side panel (#5) in place within the bottom glass clips (#11).

**10 ADJUST THE GLASS PANELS.**

10A. Remove the locking plier. Align the fixed panel (#5) to the door panel.

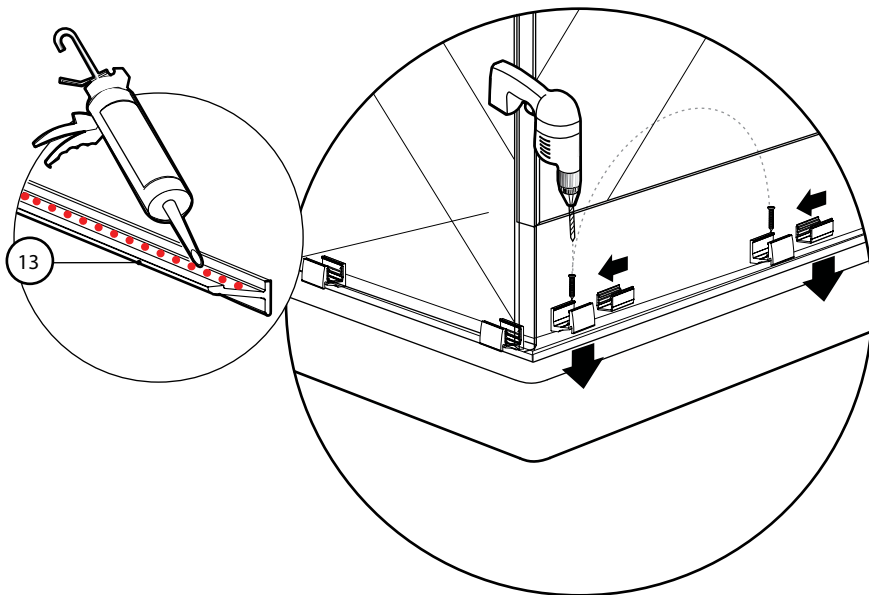
10B. Level all the glass panels by adjusting the hinges, corner clips and, if needed, insert clear setting blocks (#15&16) in the bottom glass clips. Secure the return panel once more with the locking plier.

10C. Mark the location of the aluminum "u" channels on the threshold. Remove the corner clips and then the return panel and fixed panel.



11 FASTEN THE BOTTOM GLASS CLIPS.

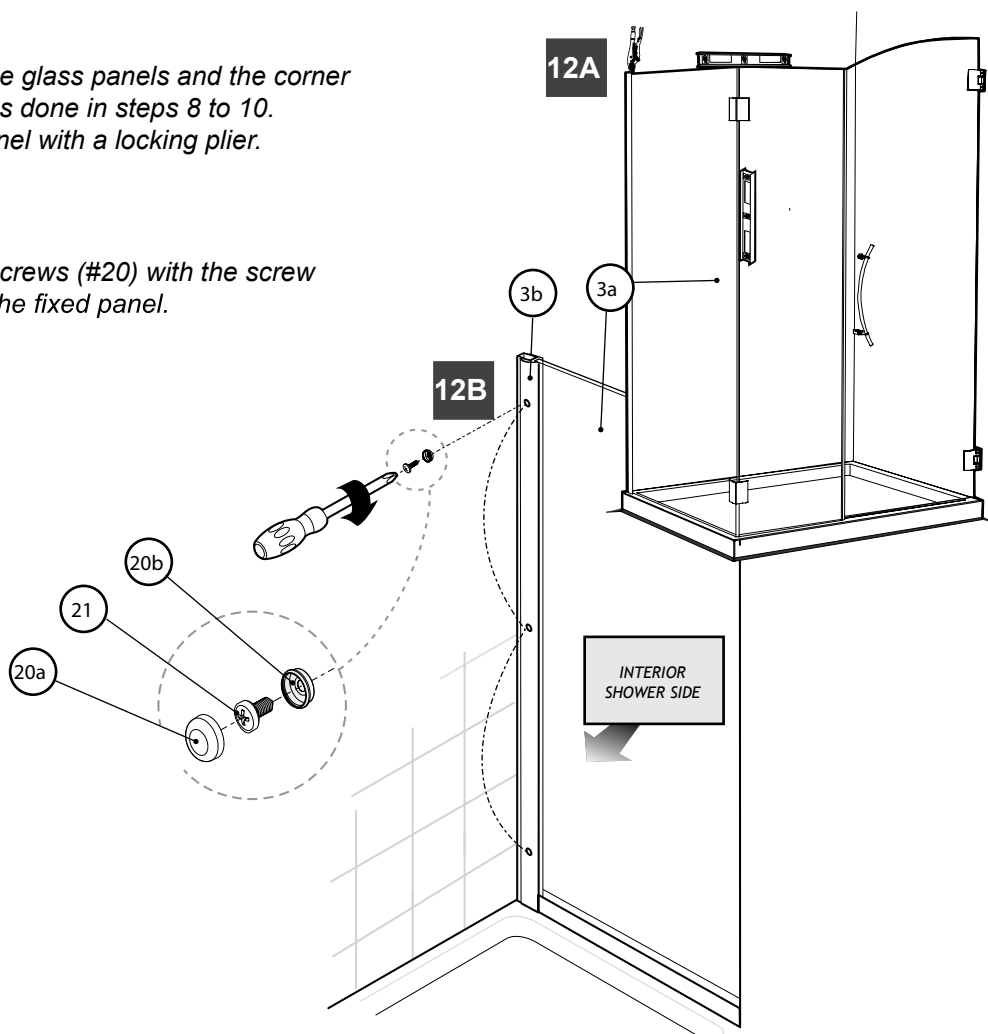
11A. Realign the aluminum “u” channels on the threshold and drill a hole using a 1/8” drill bit at about 2” from the edge. Put a drop of silicone in each hole and fasten the “u” channels with a 3/4” long screw (#22). Cover each screw with the same clear setting block(s) (#17) used previously.



12 FASTEN THE RETURN PANEL.

12A. Reposition et level the glass panels and the corner clips the same way as done in steps 8 to 10. Secure the return panel with a locking plier.

12B. Combine the 3 3/8” screws (#20) with the screw caps (#19). Fasten the fixed panel.



13 FASTEN THE SUPPORT BAR.

THE ILLUSTRATIONS BELOW ARE GENERIC. YOUR MODEL DIFFERS FROM WHAT IS ILLUSTRATED YET THE INSTALLATION PROCEDURES REMAINS THE SAME.

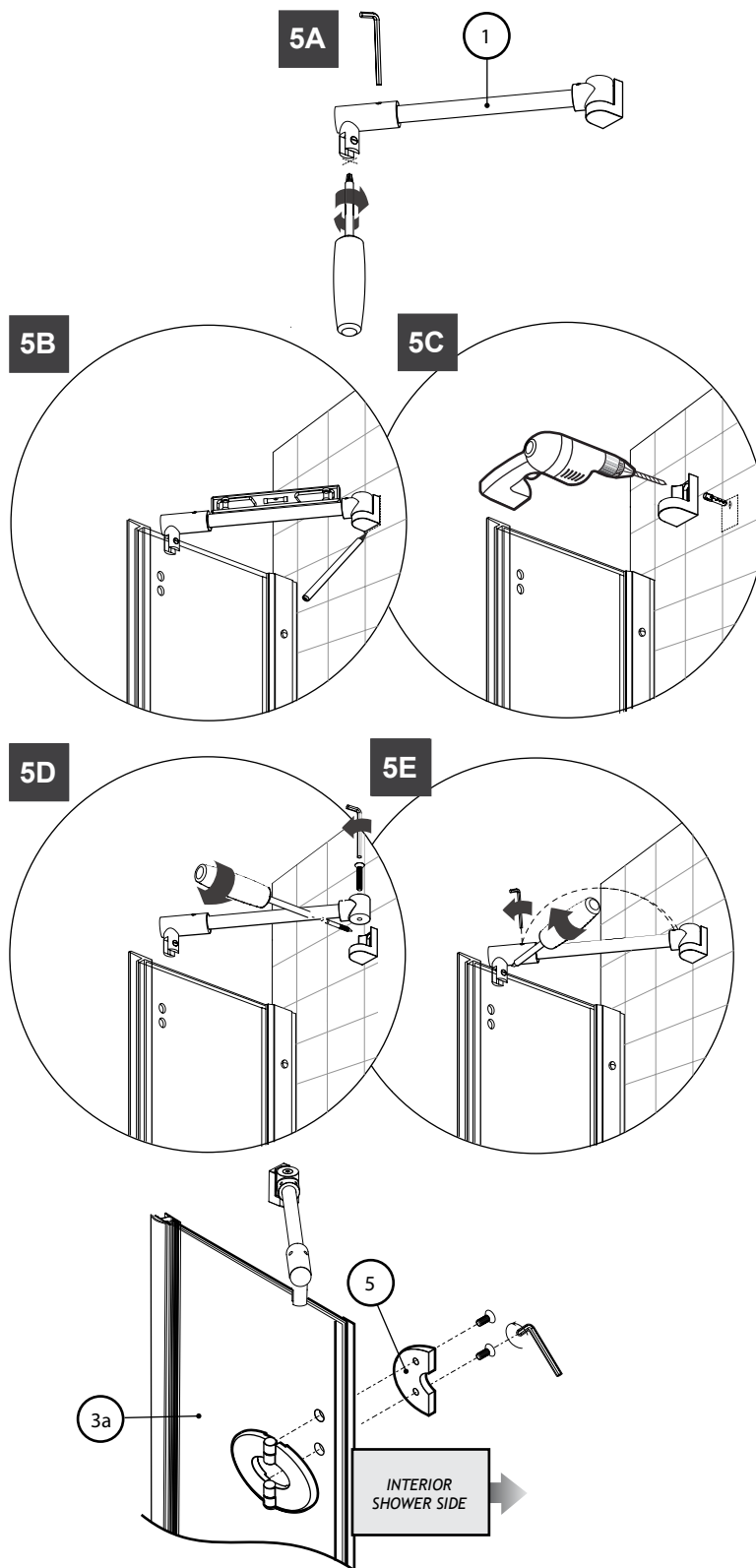
5A. Loosen the glass support. Align the slot to the fixed panel. The slotted screw head should be on the inside of the shower.

5B. Rest the support bar on the fixed panel inside the shower as shown. Level it and trace the outline of the wall bracket on the wall.

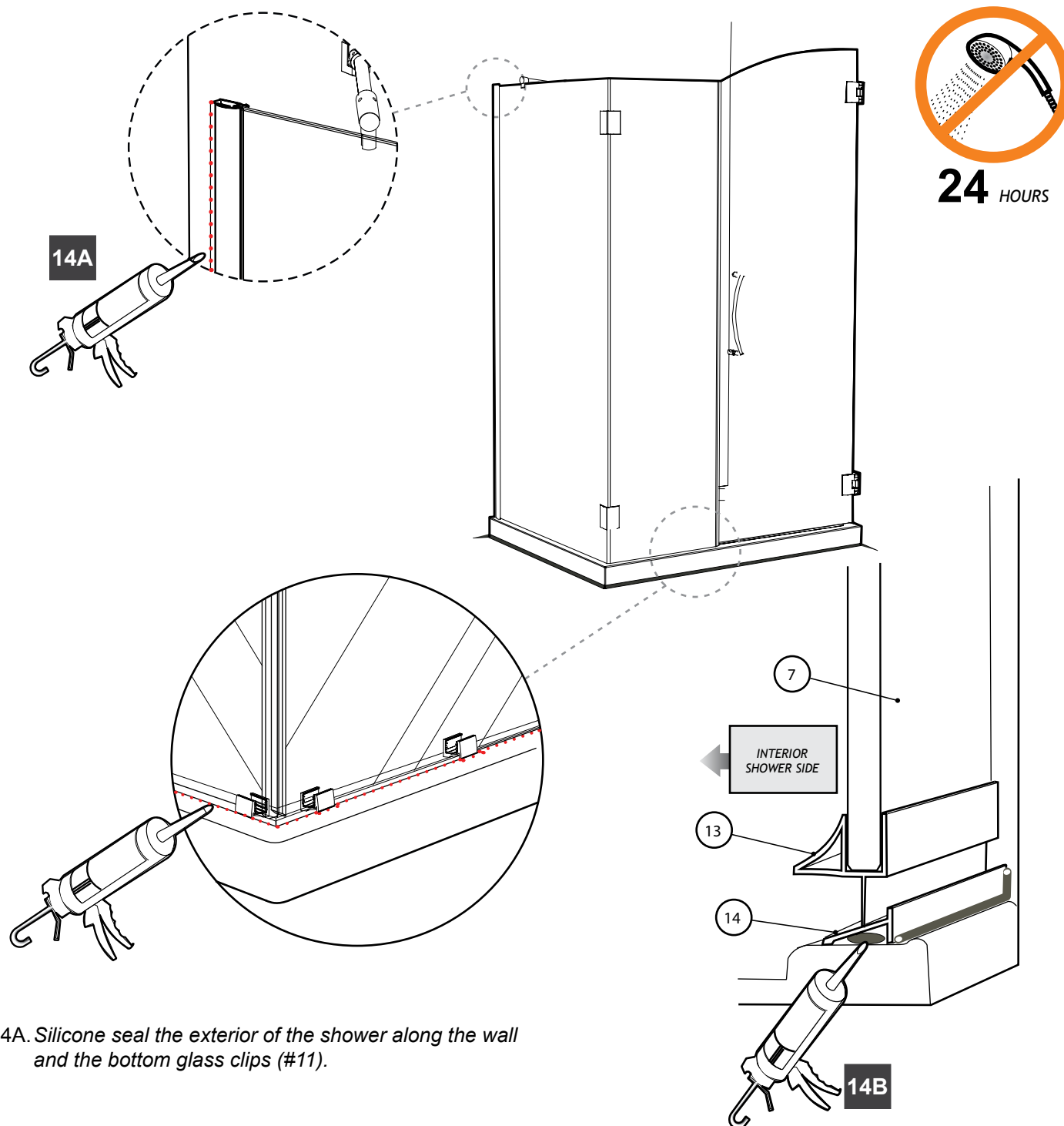
5C. Isolate the wall bracket and drill a hole, using a 1/4" drill bit (ceramic drill bit if necessary) through the wall. Locate the position of this hole by way of the wall bracket. Insert a wall plug.

5D. Secure the wall bracket to the wall by way of the screw. Assemble the cylindrical joint to the wall bracket.

5E. Secure the glass fastener and wall bracket screws to complete the installation.



14 SILICONE SEAL THE SHOWER.



14A. Silicone seal the exterior of the shower along the wall and the bottom glass clips (#11).

14B. Position the threshold (#13) under the door panel as illustrated. Lift it to pass a bead of silicone underneath. Apply silicone on the outside edges.



WE RECOMMEND TO HOLD THE THRESHOLD (#13) IN PLACE WITH TAPE WHILE DRYING.