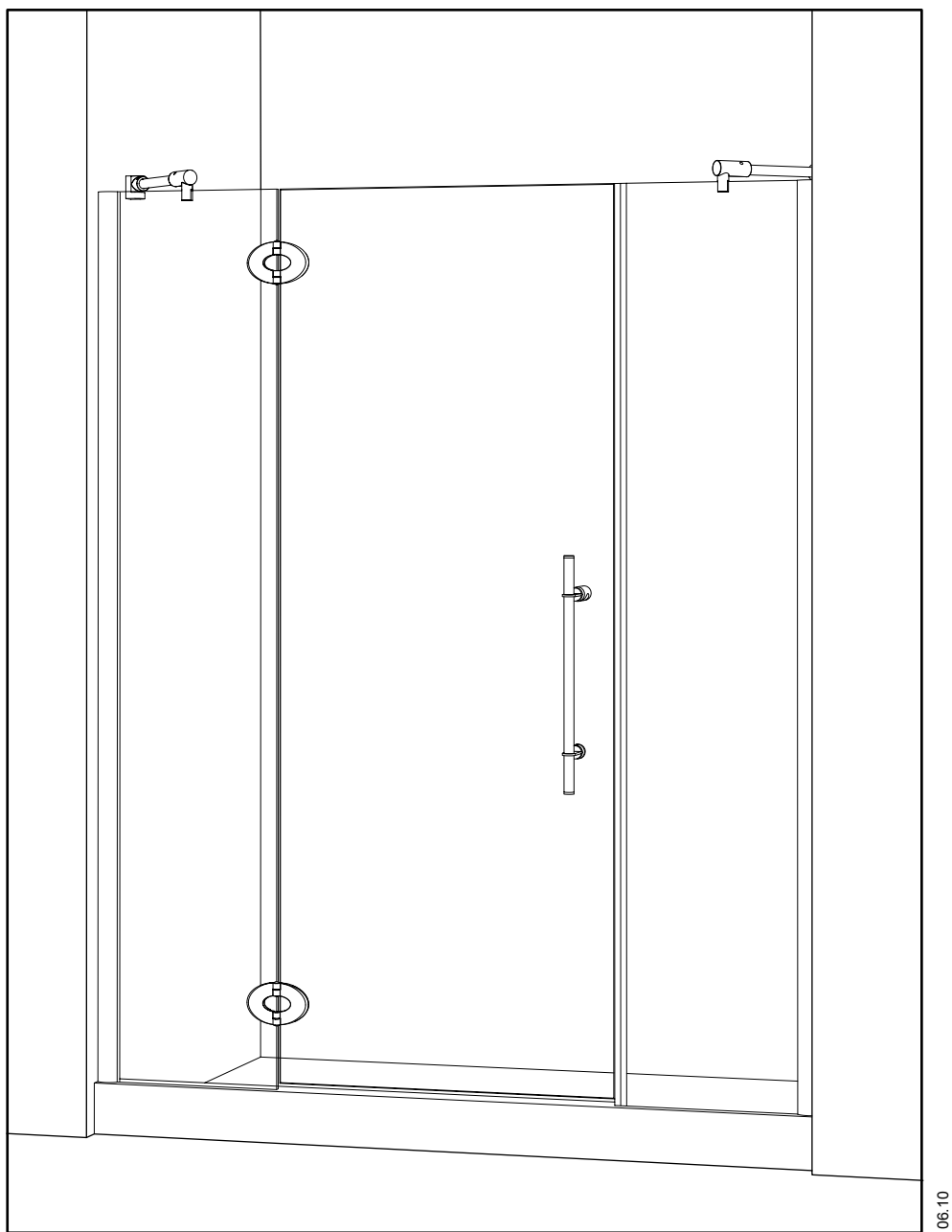


M-PDP95X
INSTRUCTION MANUAL

ALUMAX
Moana Collection



● General Instruction

- Read carefully and completely before proceeding.
- This shower door should be installed by a recommended installer.
- It is recommended that you wear safety glasses at all times during installation.

● Installation over ceramic tiles

- Silicone should be used to seal the line where ceramic tiles meets the side panels.
- If your shower door is to be installed over ceramic tiles, tiles should be completely under both wall jambs.
- A threshold made of aluminum is included and should be siliconed underneath the door panels in order to ensure optimal leak protection.

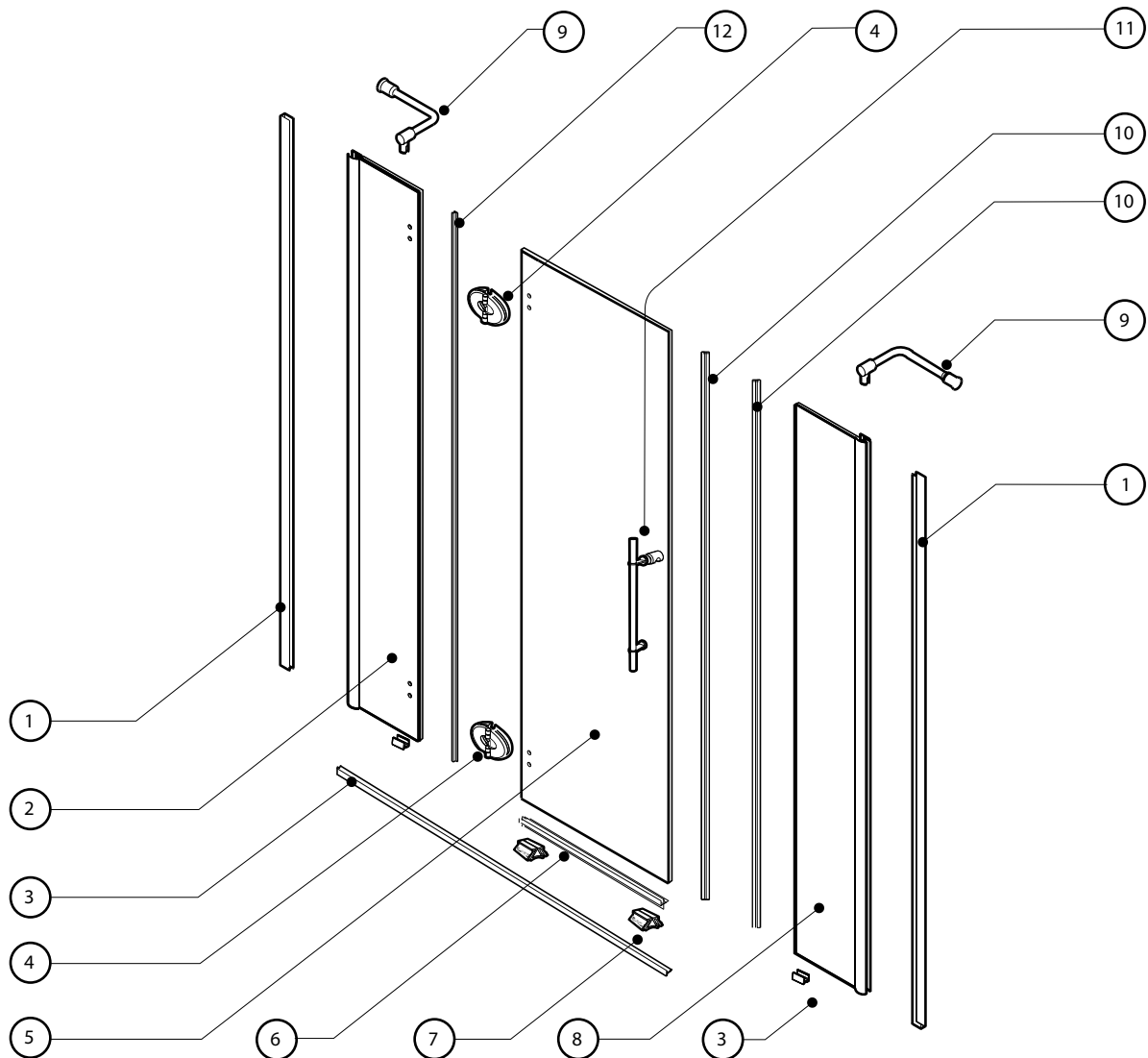
● Notice

- Caulking: no sealant is required inside the shower.
- All models are equipped with transparent sealing gaskets and magnetic closure gaskets.
- Threshold for leak protection is included and recommended on base without lip and ceramic base tile.

● Care for your frameless shower door

- Never use scouring powder pads or sharp instruments on metal work or glass panels.
- An occasional wiping down with a mild detergent diluted in water is all that is needed to keep the panels and aluminum parts looking new.

<p>Product specifications are subject to change without notice. Use installation instructions supplied with product.</p>
--



① WALL JAMB (2)

② SIDE PANEL WITH HINGES (1)

③ THRESHOLD (1)

④ HINGE (2)

⑤ DOOR PANEL (1)

⑥ BOTTOM DOOR GASKET (1)

⑦ LEVELING BLOCKS (2)

⑧ SIDE PANEL (1)

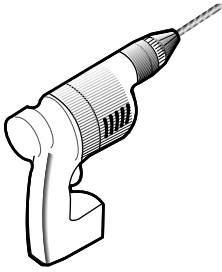
⑨ SUPPORT BAR (2)

⑩ MAGNETIC DOOR GASKET (2)

⑪ KNOB (1)

⑫ SIDE PANEL GASKET (1)

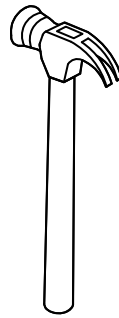
TOOLS AND MATERIALS REQUIRED



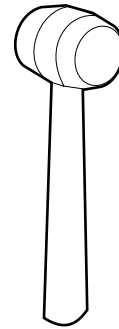
DRILL



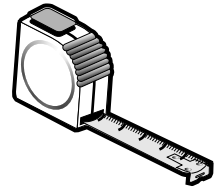
SCREWDRIVERS



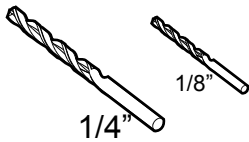
HAMMER



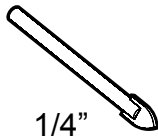
MALLET



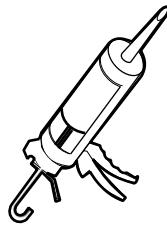
MEASURE TAPE



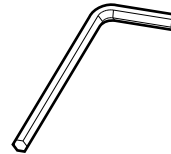
ACRYLIC DRILL BIT



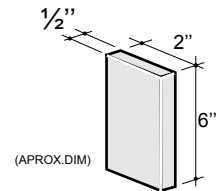
CERAMIC TILE DRILL BIT



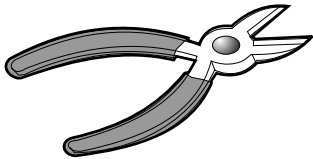
SILICONE



ALLEN KEY



WOODEN BLOCK



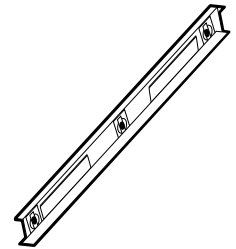
CUTTING PLIER



PENCIL

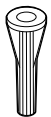


LONG NOSE LOCKING PLIER



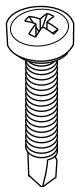
LEVEL

PACKAGING CHECK LIST & HARDWARE



X 6

WALL PLUG



X 6

SCREW 1 1/4" LG



X 6

SCREW CAP



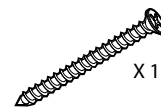
X 6

SCREW 3/8" LG



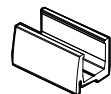
X 1

SCREW 3/4" LG



X 1

SCREW 2 1/2" LG



X 2

BOTTOM GLASS CLIP
(BTM GL CLIP 1.5)

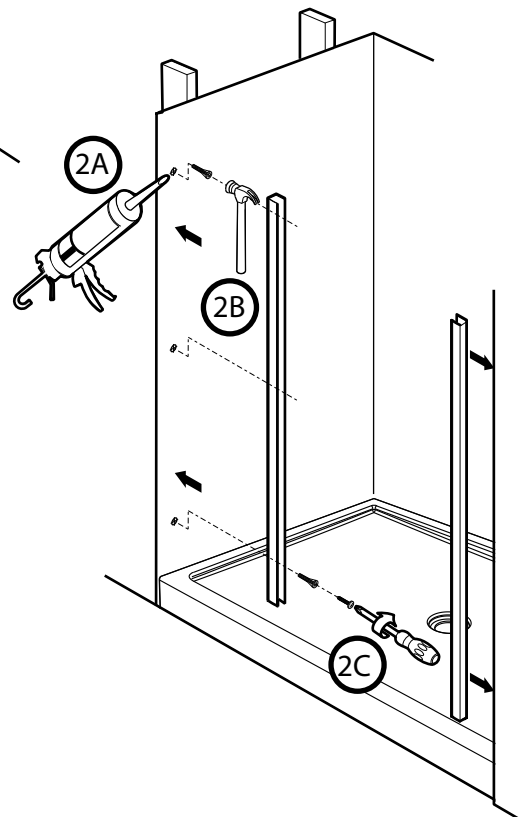
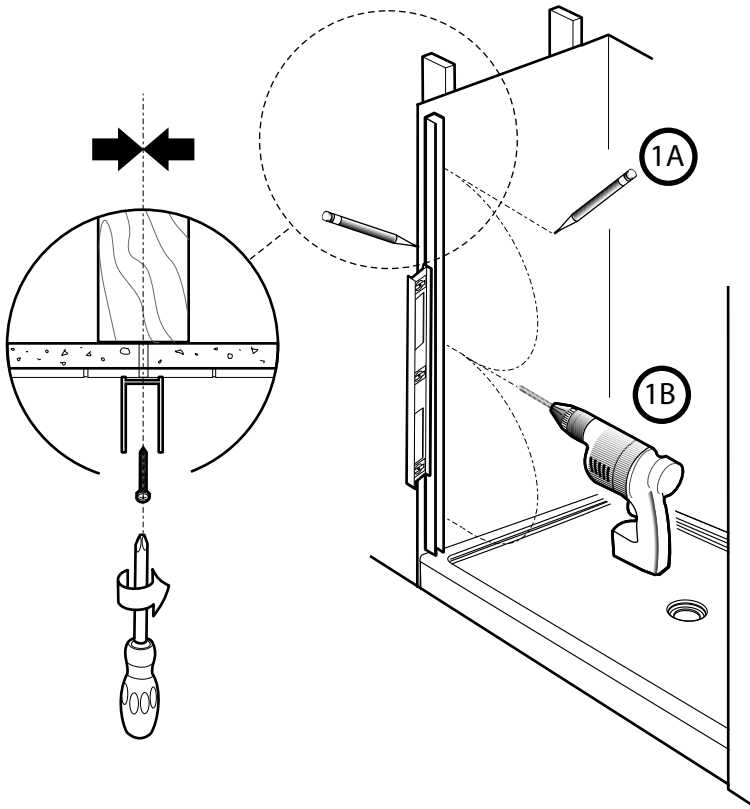
WARNING

Wall jamb must be supported and fastened with provided anchors into a stud framing.

ON BOTH SIDES

Step

1 MOUNT THE WALL JAMB (2)



Step

2 WALL PLUG (6)

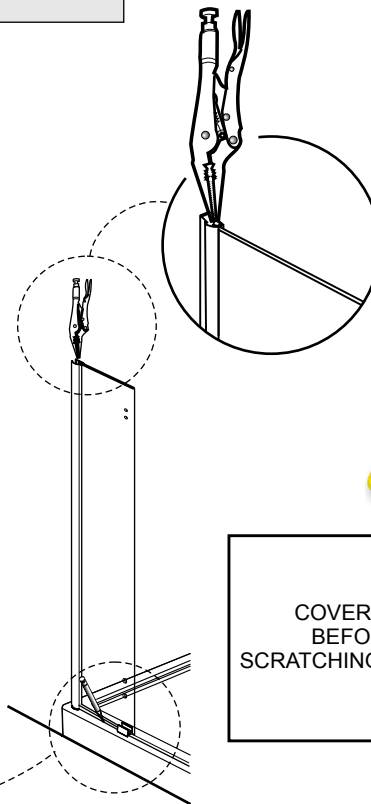
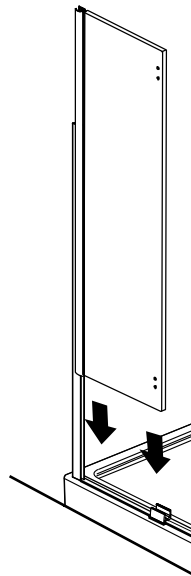
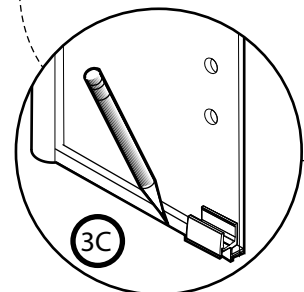
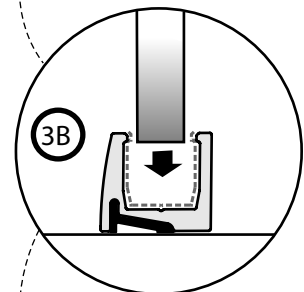
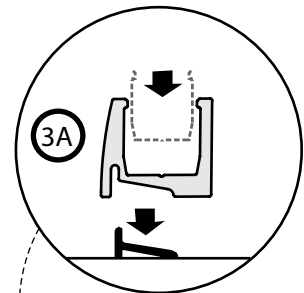
ON BOTH SIDE

Step

3

SLIDE THE FIXED PANEL
OVER THE WALL JAMB

ON BOTH SIDE

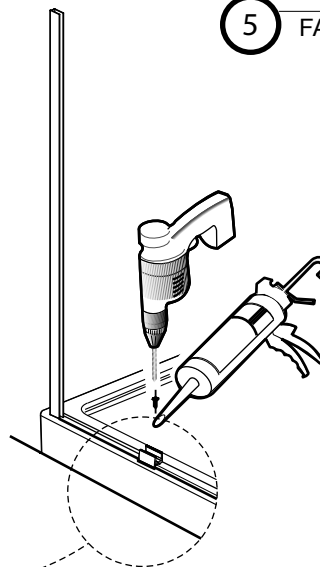
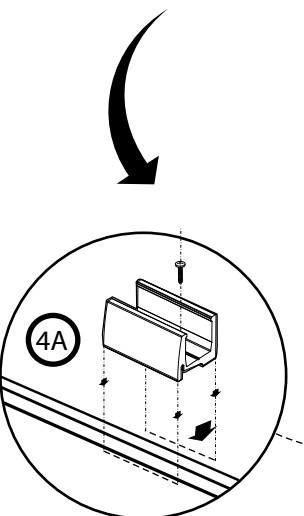


COVER THE PLIER'S TEETH
BEFOREHAND TO AVOID
SCRATCHING THE ALUMINIUM PARTS.

Step

5

FASTEN (TEMPORARILY) FIXED PANELS (1)



Step

4

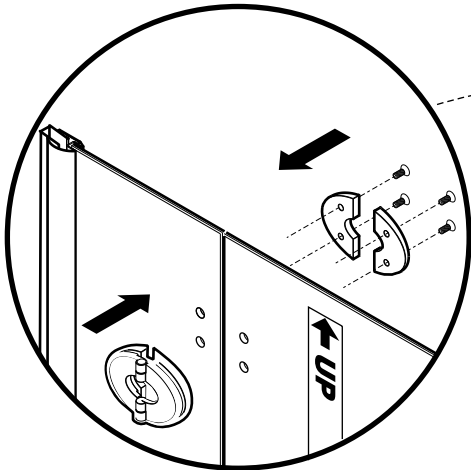
FASTEN THE THRESHOLD (1)



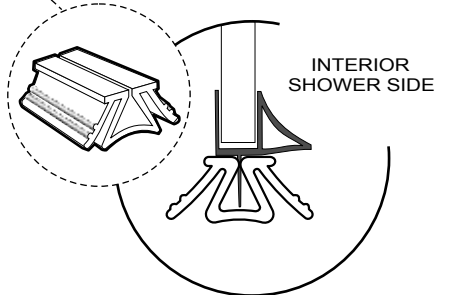
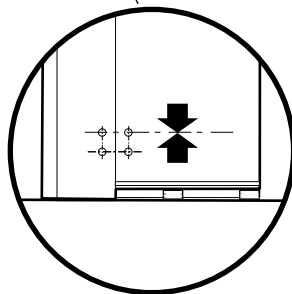
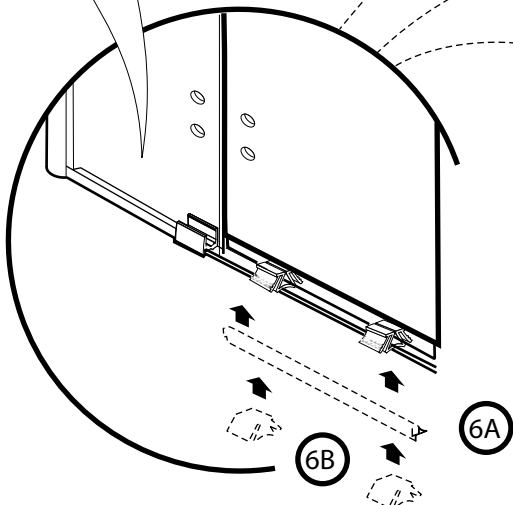
IT IS RECOMMENDED TO HAVE TWO PEOPLE FOR THE FOLLOWING INSTALLATION STEP.

Step

7 HINGE (2)



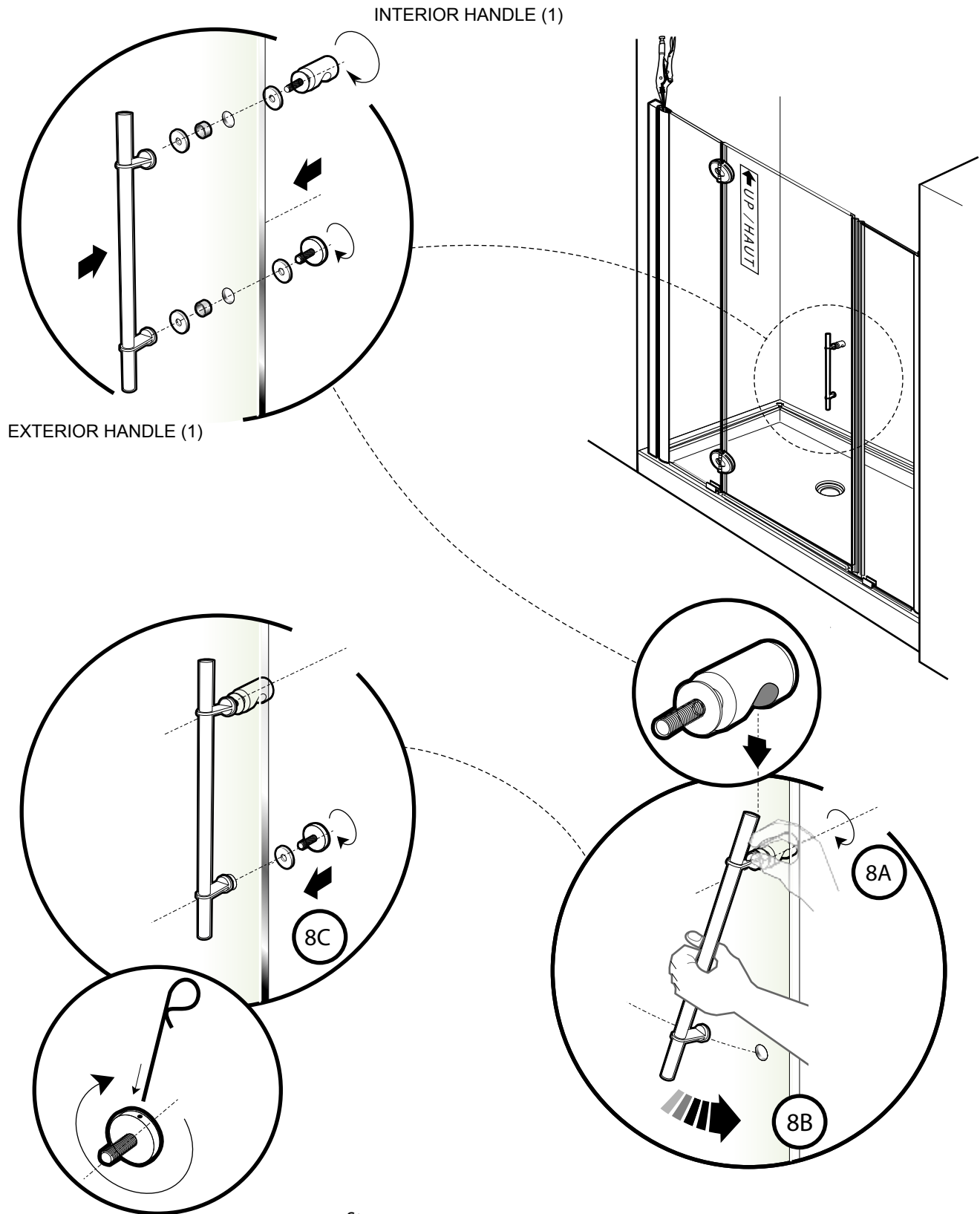
LEVEL GLASS PANELS TO ALIGN HOLES



6C REMOVE LEVELING BLOCKS AFTER HINGES INSTALLATION

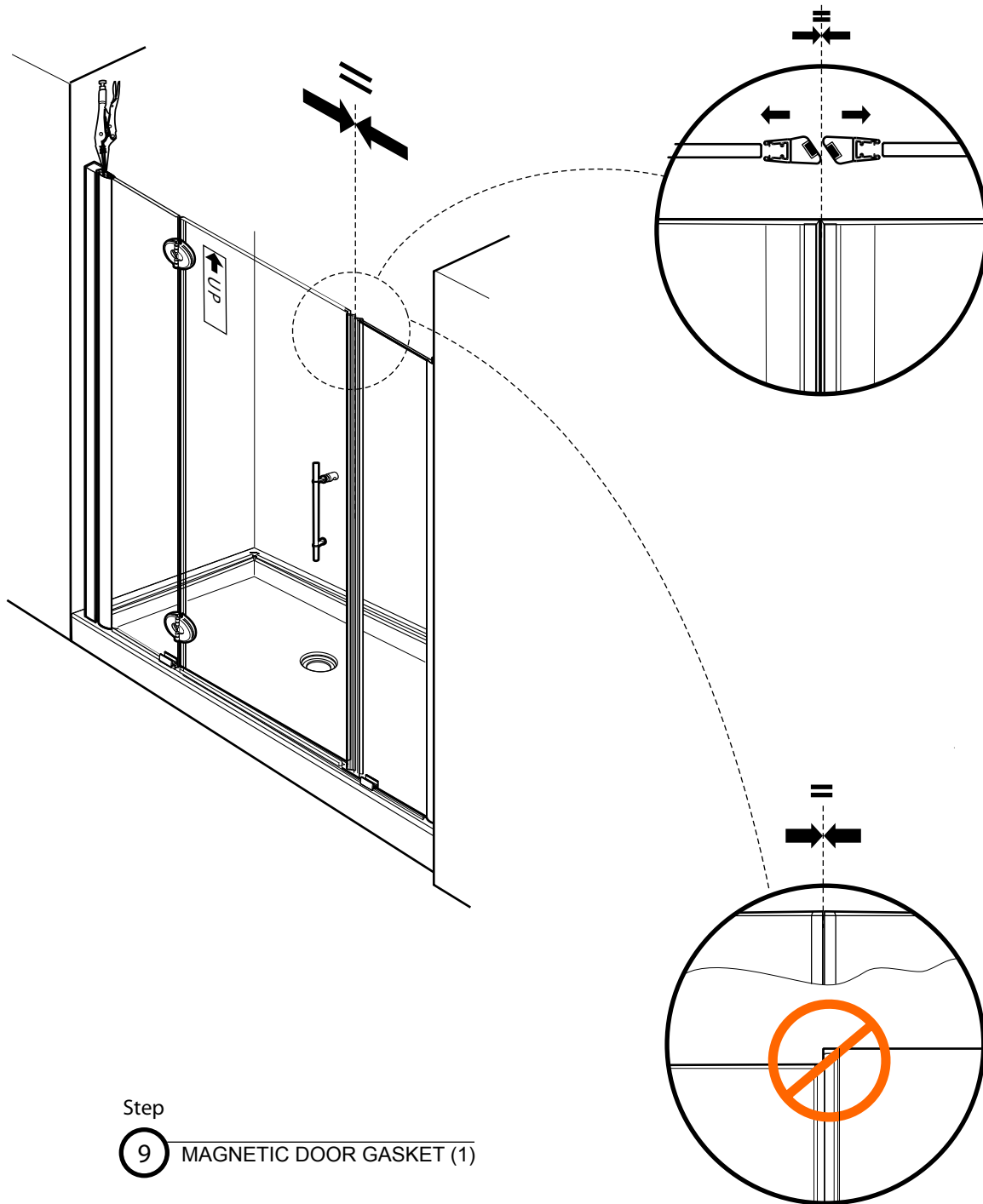
Step

6 BOTTOM DOOR GASKET (1) + LEVELING BLOCKS (2)



Step

8 HANDLE INSTALLATION



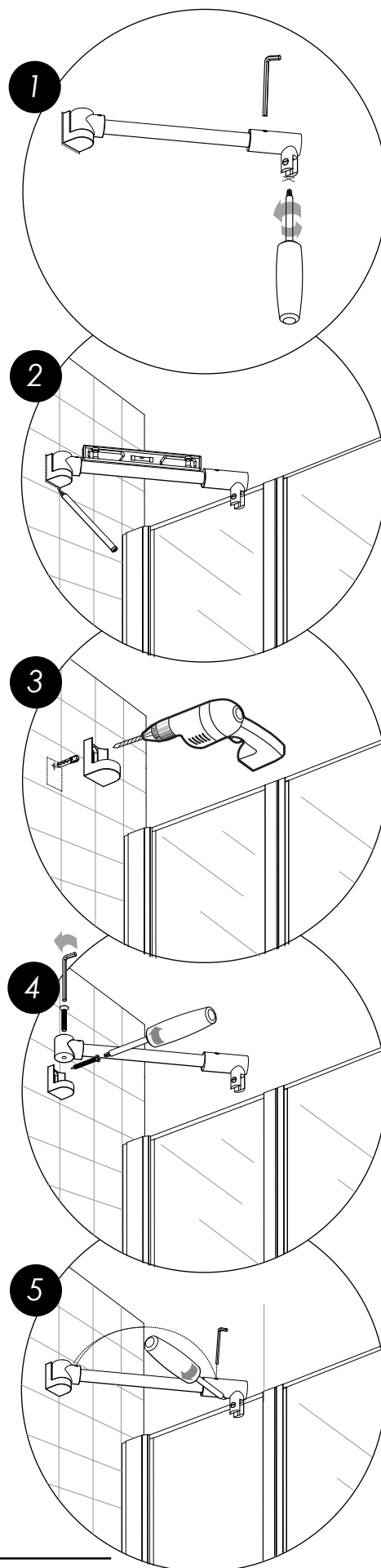
1 Loosen the glass clip (#1d). Align the slot to the fixed panel. The slotted screw head should be on the inside of the shower.

2 Rest the support bar on the fixed panel inside the tub. Level it and trace an arc on the wall.

3 Isolate the wall bracket and drill a hole, using a 1/4" drill bit through the wall. Locate the position of this hole by way of the wall bracket. Insert a wall plug.

4 Secure the wall bracket to the wall by way of the screw. Assemble the cylindrical joint to the wall bracket.

5 Secure the glass fastener and wall bracket screws to complete the installation process.

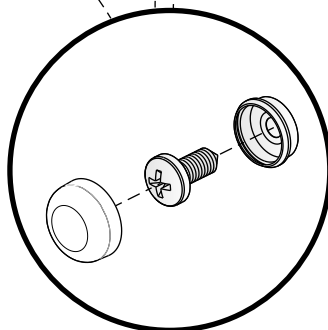
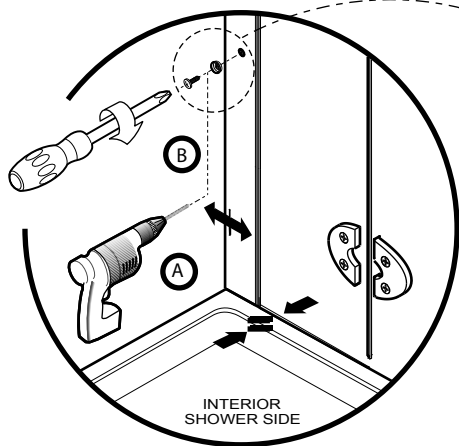
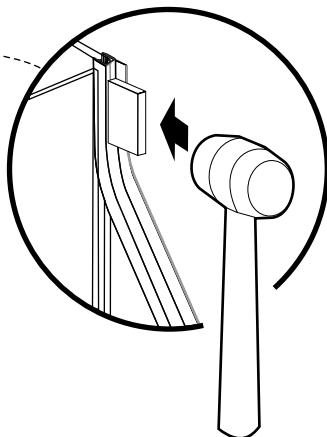
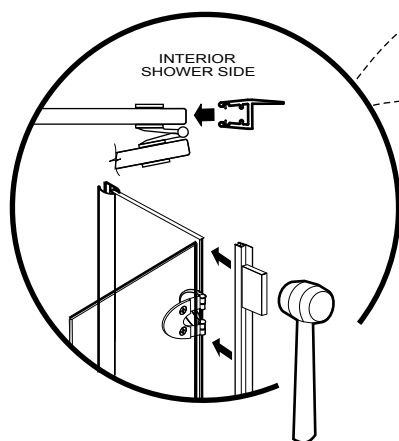


Step

12 SUPPORT BAR(1)

Step

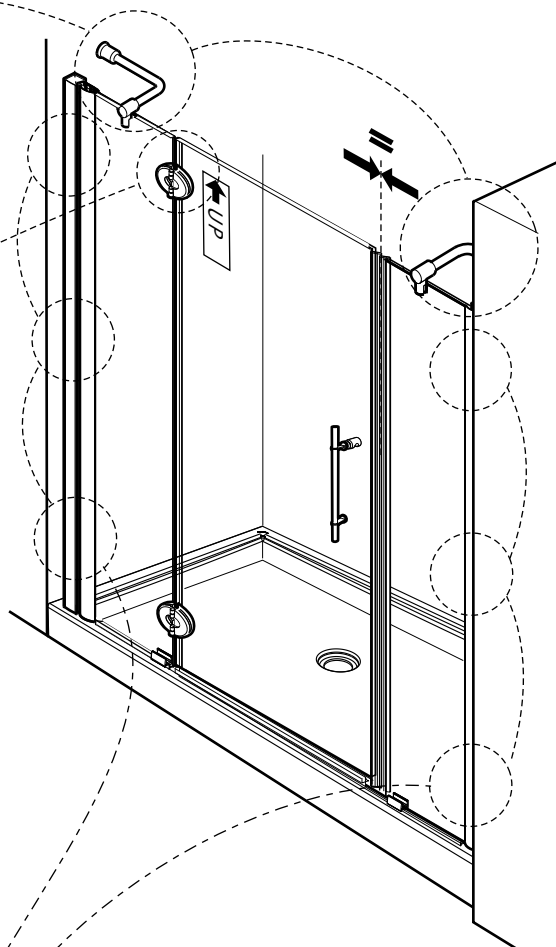
11 GASKET ON FIXED PANEL (1)

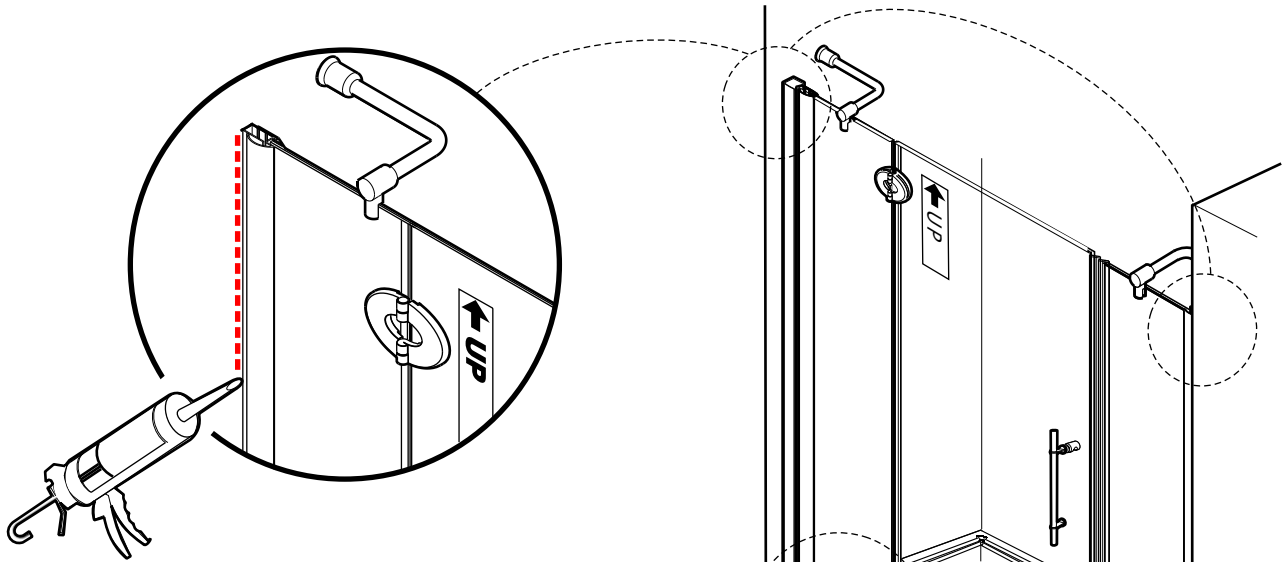


Step

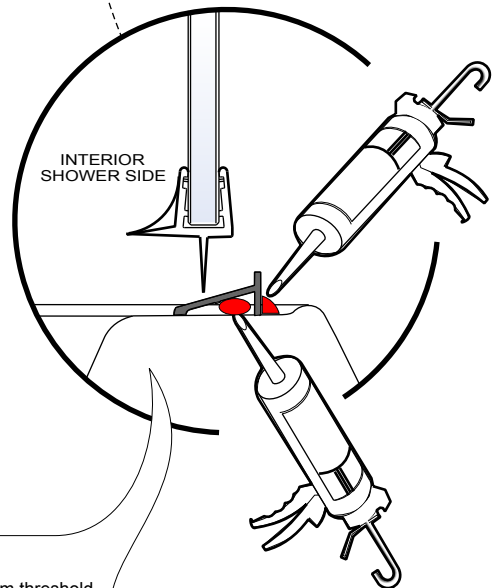
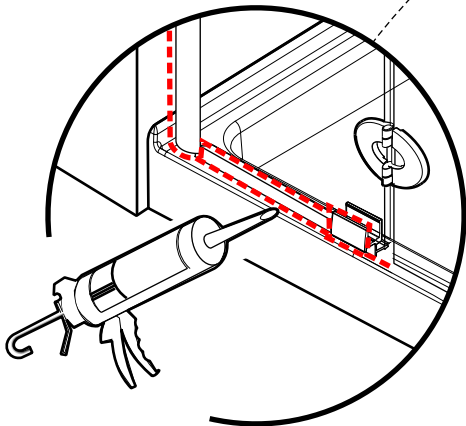
10 SCREW 3/8" LG + SCREW CAP (6)

PRIOR TO FASTENING DOOR ASSEMBLY,
VERIFY MAGNETIC DOOR GASKET ALIGNMENT
AND ALL PANELS SHOULD BE LEVELED.





Step
13 SILICON SEAL EXTERIOR



Step
14 THRESHOLD (1)

Recommended:

To ensure optimal leak protection, it is recommended to install the aluminum threshold by running a bead of silicone under the part and position it between the fixed panels and underneath door panel.



24 Hours