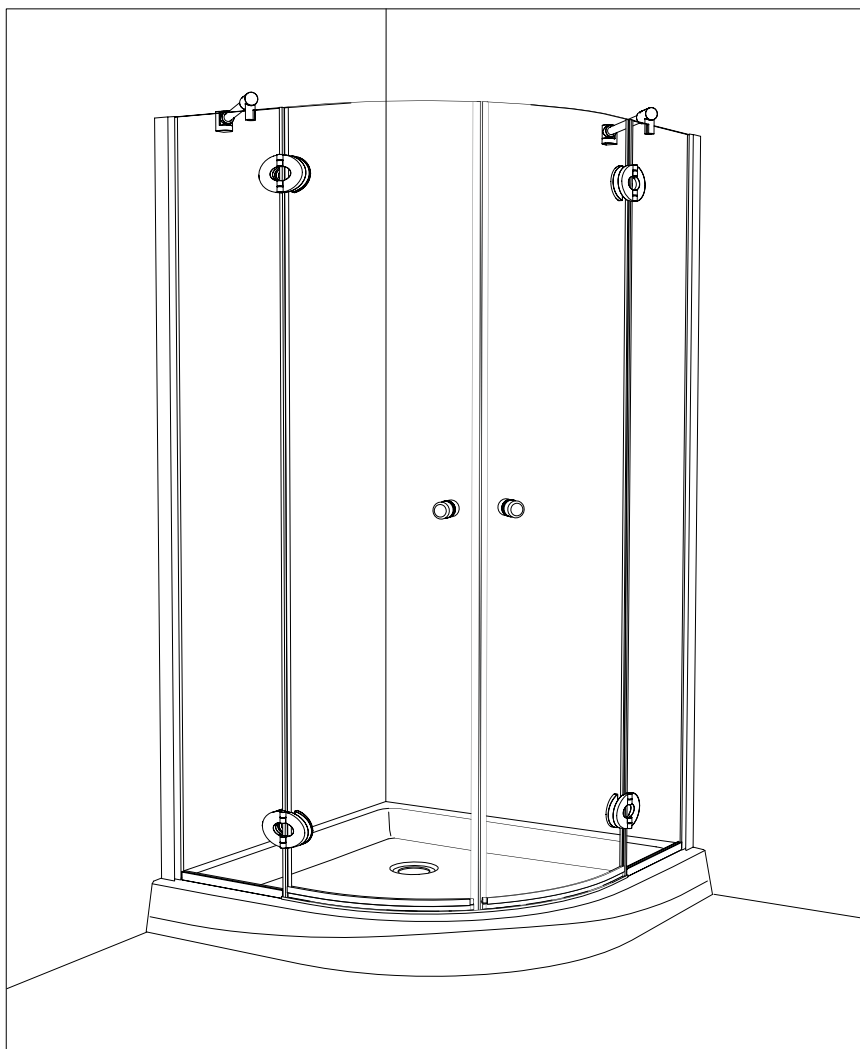


M-R94Z
INSTRUCTION MANUAL

ALUMAX
Moana Collection

Corner Round Shower door



08.10

Please keep this manual and product code number for future reference and replacement parts ordering if necessary.

GENERAL INSTRUCTIONS

- *Read this manual carefully and completely before proceeding.*
- *It is recommended that you wear safety glasses at all times during the installation.*

INSTALLATION OVER CERAMIC TILES

- *Silicone should be used to seal the gap where the ceramic tiles meet the fixed panel.*
- *If your shower door is to be installed over ceramic tiles, the tiles should lay completely under the wall jamb.*

NOTICE

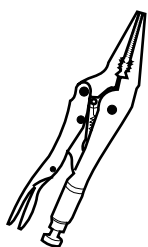
- *Caulking: no sealant is required inside the shower. Unless otherwise stated.*
- *Some models are equipped with clear sealing gaskets.*

CARE FOR YOUR SHOWER DOOR

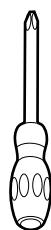
- *Never use scouring powder pads or sharp instruments on metal pieces or glass panels. An occasional wiping down with a mild soap diluted in water is all that is needed to keep the panels and aluminum parts looking new.*
- *We recommend wiping the glass panels with a squeegee after each use.*

Product specifications are subject to change without notice.

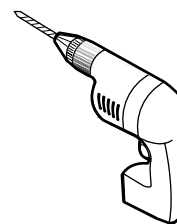
TOOLS AND MATERIAL REQUIRED



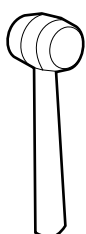
LONG NOSE LOCKING PLIER (X2)



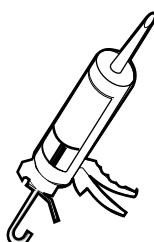
SCREWDRIVERS



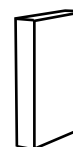
DRILL



MALLET



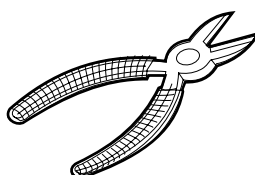
SILICONE



BLOCK



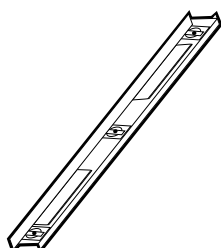
PENCIL



CUTTING PLIER



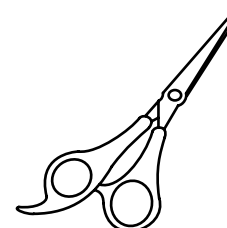
TAPE MEASURE



LEVEL



1/4" & 1/8" DRILL BITS



SCISSOR

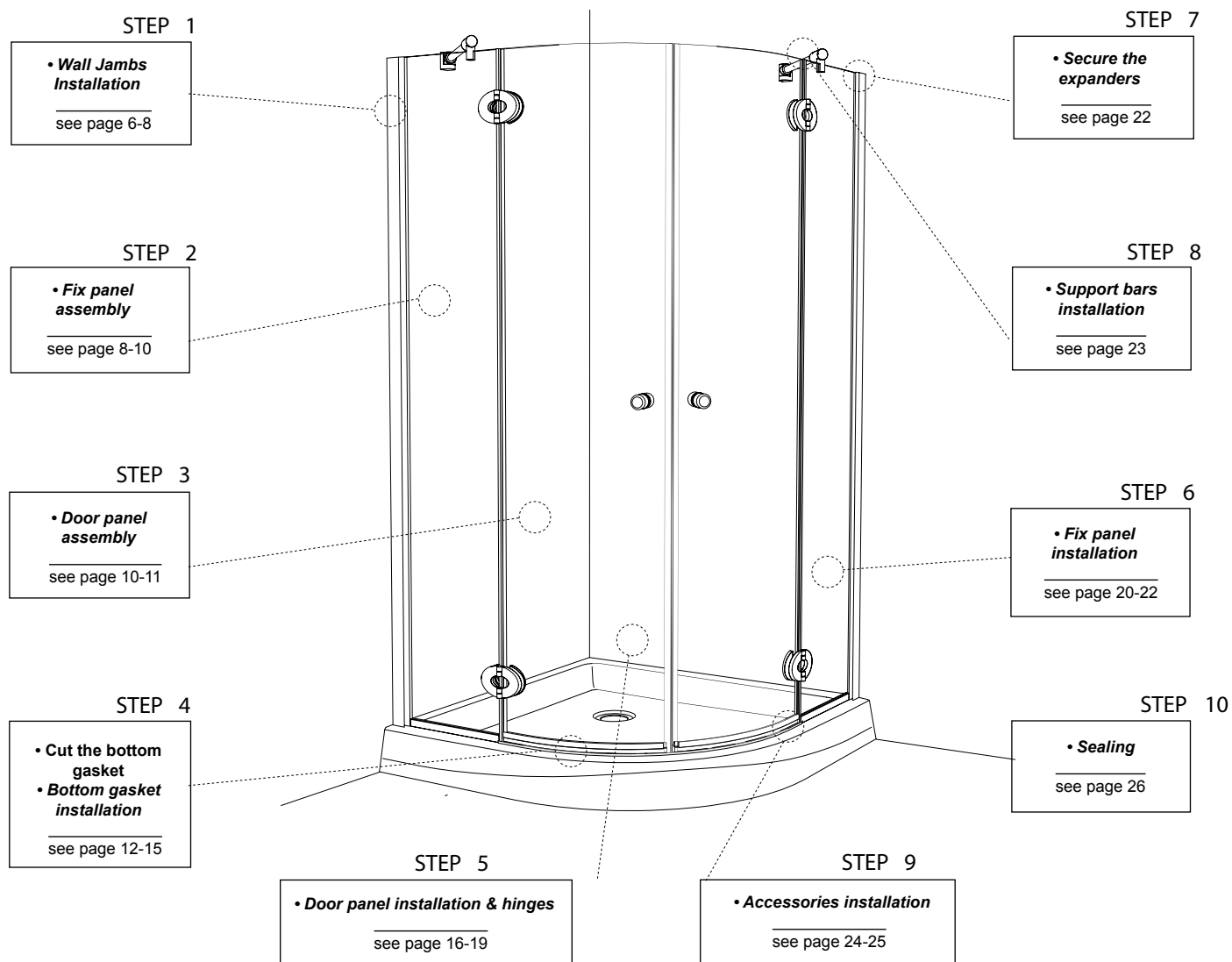


2 PEOPLE REQUIRED

* To install the shower door on ceramic tiles, use a 1/4" drill bit for ceramic tiles

INSTALLATION OF COMPONENTS

FOLLOW INSTALLATION STEPS REQUIRED FOR THE MODEL

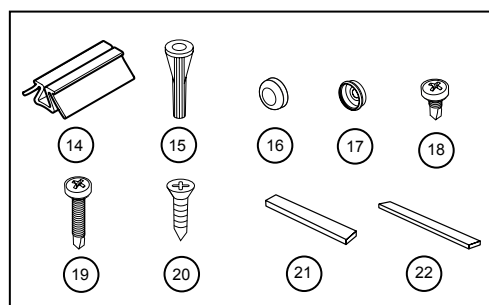


PARTS LISTING

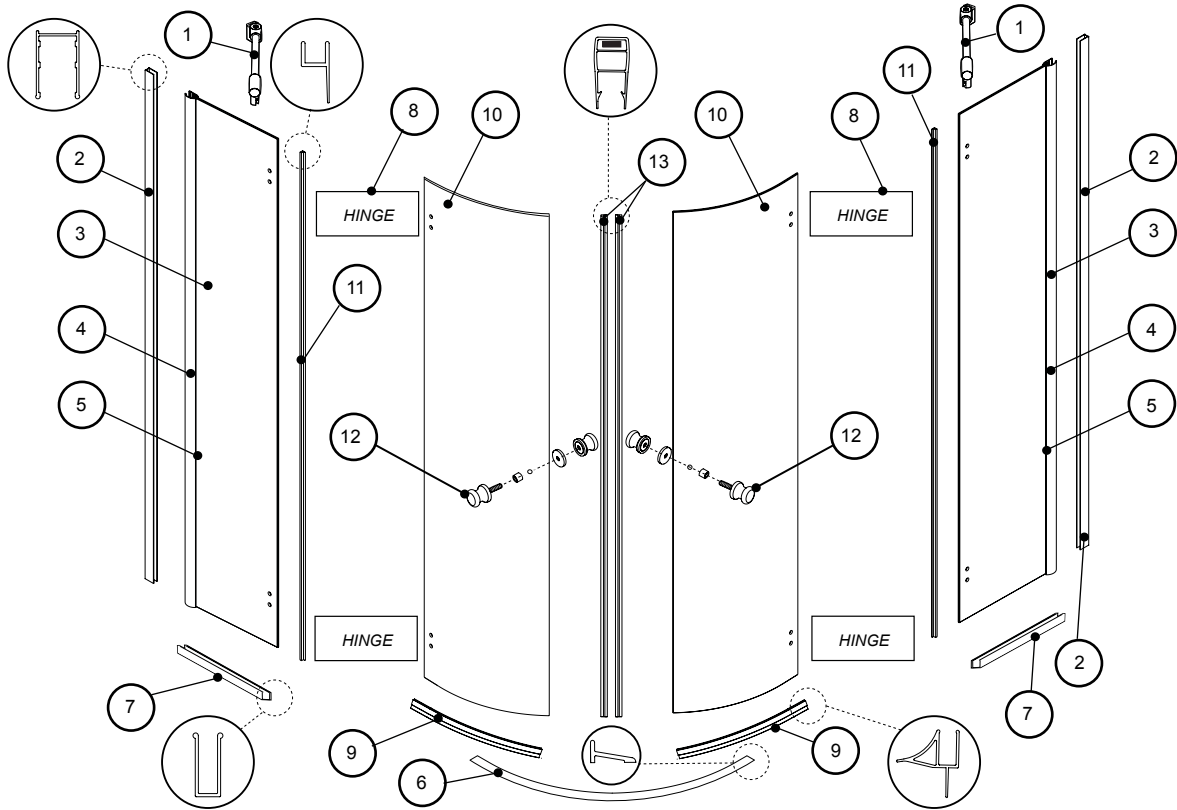
HINGES

| Q | M | T | R |
|---|---|---|---|
| | | | |

HARDWARE



PARTS LISTING

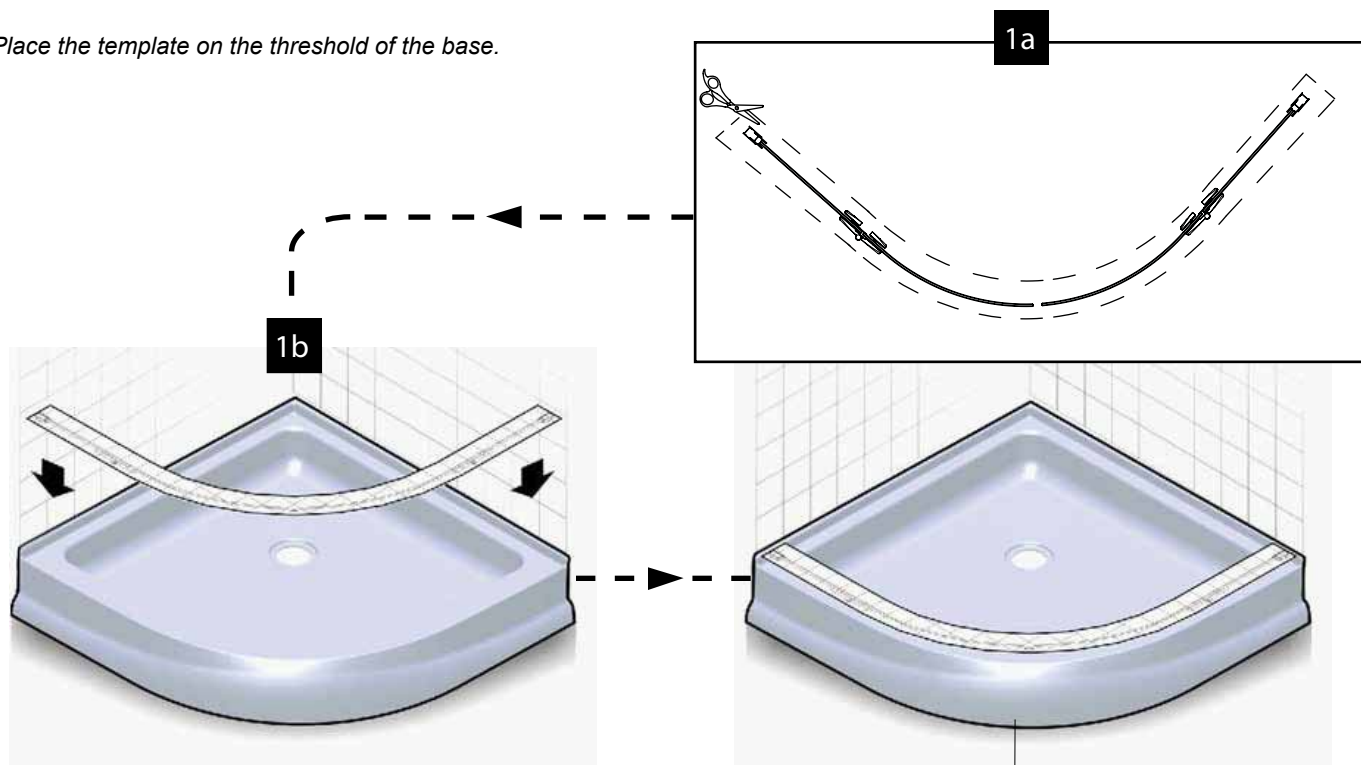


| ITEM | PARTS | QTY |
|------|-------------------------------------|-----|
| 1 | SUPPORT BAR | 2 |
| 2 | WALL JAMB (REGULAR PUNCH) | 2 |
| 3 | HINGED FIXED PANEL | 2 |
| 4 | EXPANDER | 2 |
| 5 | GASKET | 2 |
| 6 | ALUMINUM THRESHOLD | 1 |
| 7 | ALUMINIUM "U" CHANNEL | 2 |
| 8 | HINGE | 4 |
| 9 | BOTTOM DOOR GASKET | 2 |
| 10 | DOOR PANEL | 2 |
| 11 | SIDE PANEL GASKET | 2 |
| 12 | KNOB | 2 |
| 13 | MAGNETIC DOOR GASKET | 2 |
| ITEM | PARTS | QTY |
| 14 | SPACING BLOCKS | 4 |
| 15 | WALL PLUG | 7 |
| 16 | SCREW CAP | 7 |
| 17 | BACK SCREW CAP | 7 |
| 18 | PAN SELF DRILLING SCREW# 8- 3/8" | 6 |
| 19 | PAN SELF-DRILLING SCREW # 8- 1-1/4" | 6 |
| 20 | FLAT HEAD SCREW # 6- 1-1/4" | 2 |
| 21 | CLEAR SETTING BLOCK | 2 |
| 22 | CLEAR SETTING BLOCK | 2 |

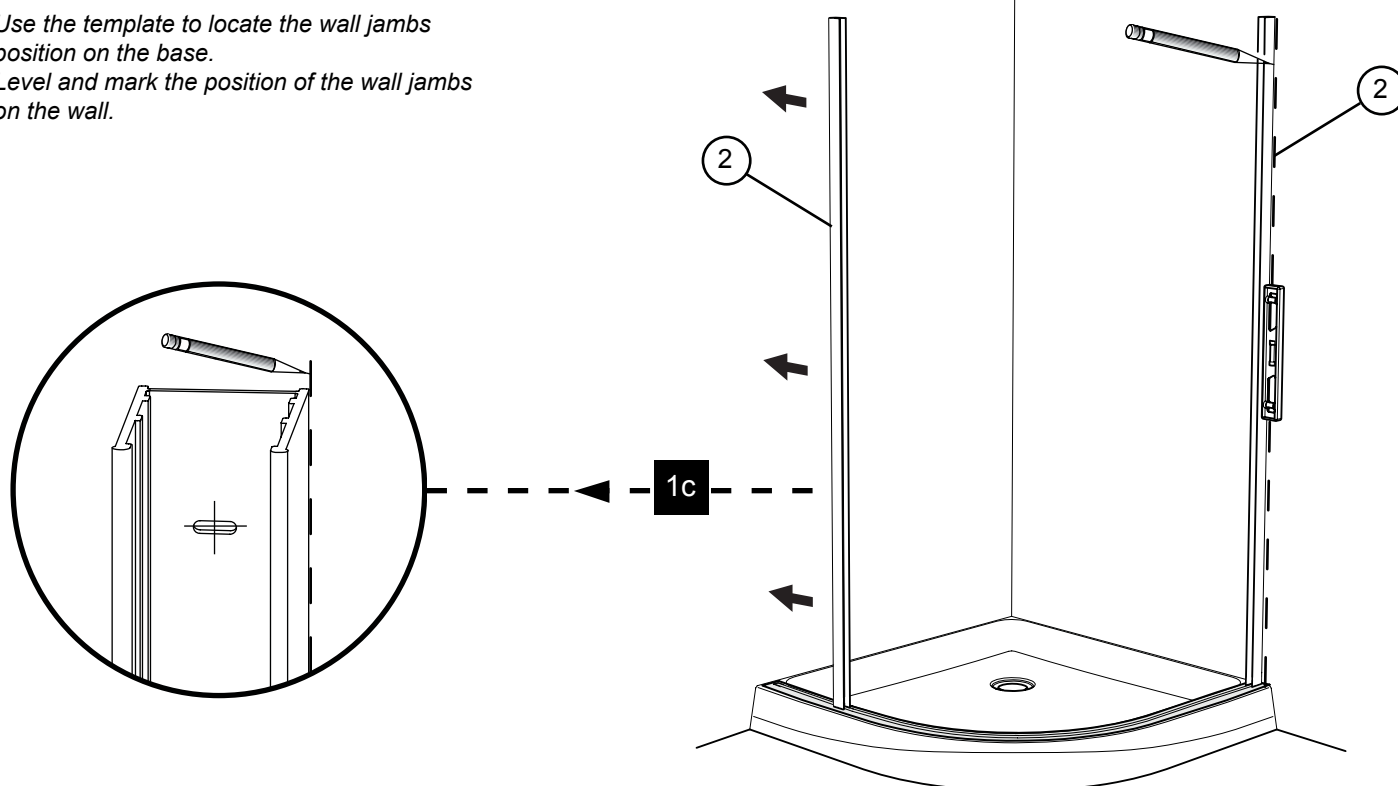
1 WALL JAMBS INSTALLATION

1a. Cut-out the template before installation.

1b. Place the template on the threshold of the base.



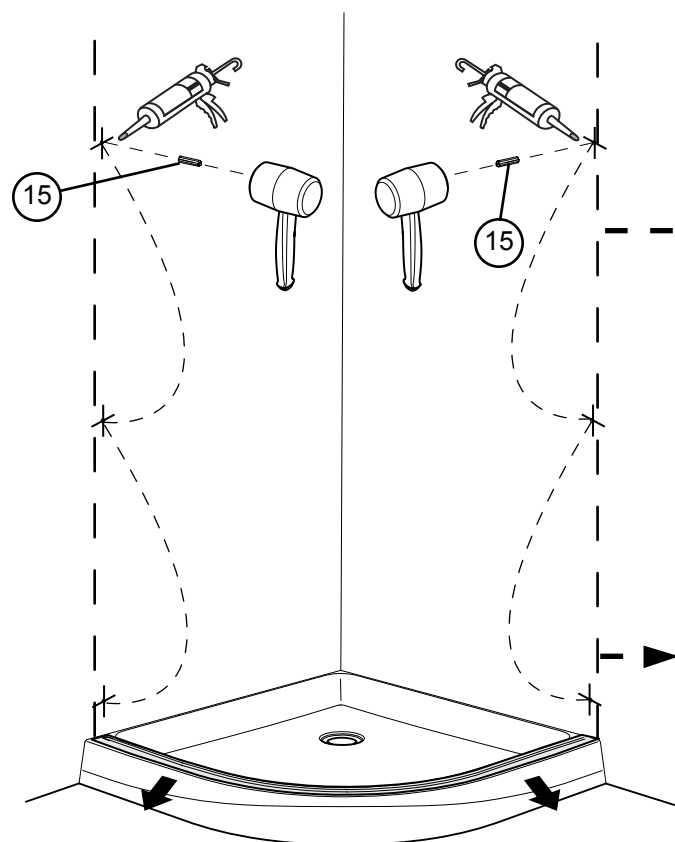
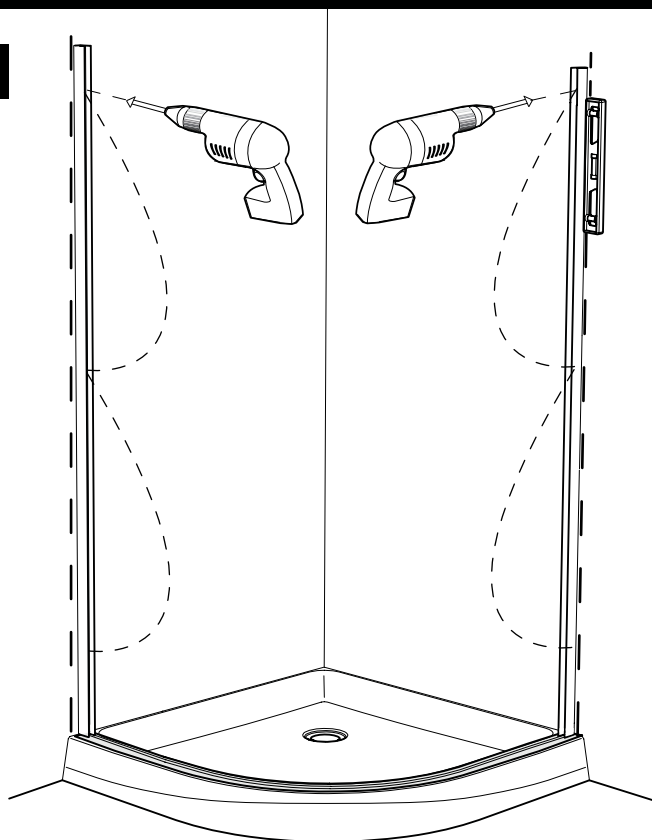
1c. Use the template to locate the wall jambs position on the base.
Level and mark the position of the wall jambs on the wall.



1 WALL JAMBS INSTALLATION (CONTINUED)

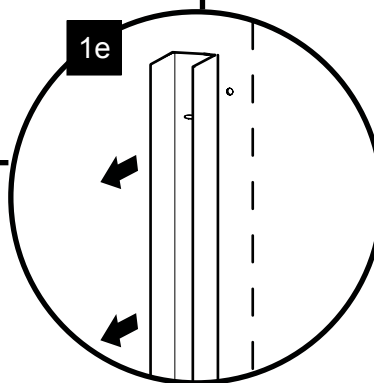
- 1d. *Drill holes using Ø1/8" drill bit and use the wall jambs holes as reference.*
- 1e. *Remove the wall jambs.*
- 1f. *Insert one drop of silicone in each hole in the wall before inserting the wall plug.*
- 1g. *Before replacing the wall jambs on the base remove the template and add a drop of silicone on the bottom back of the wall jambs as illustrated.*

1d

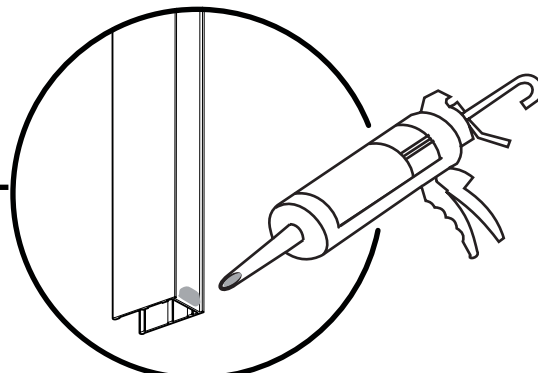


1e

1f



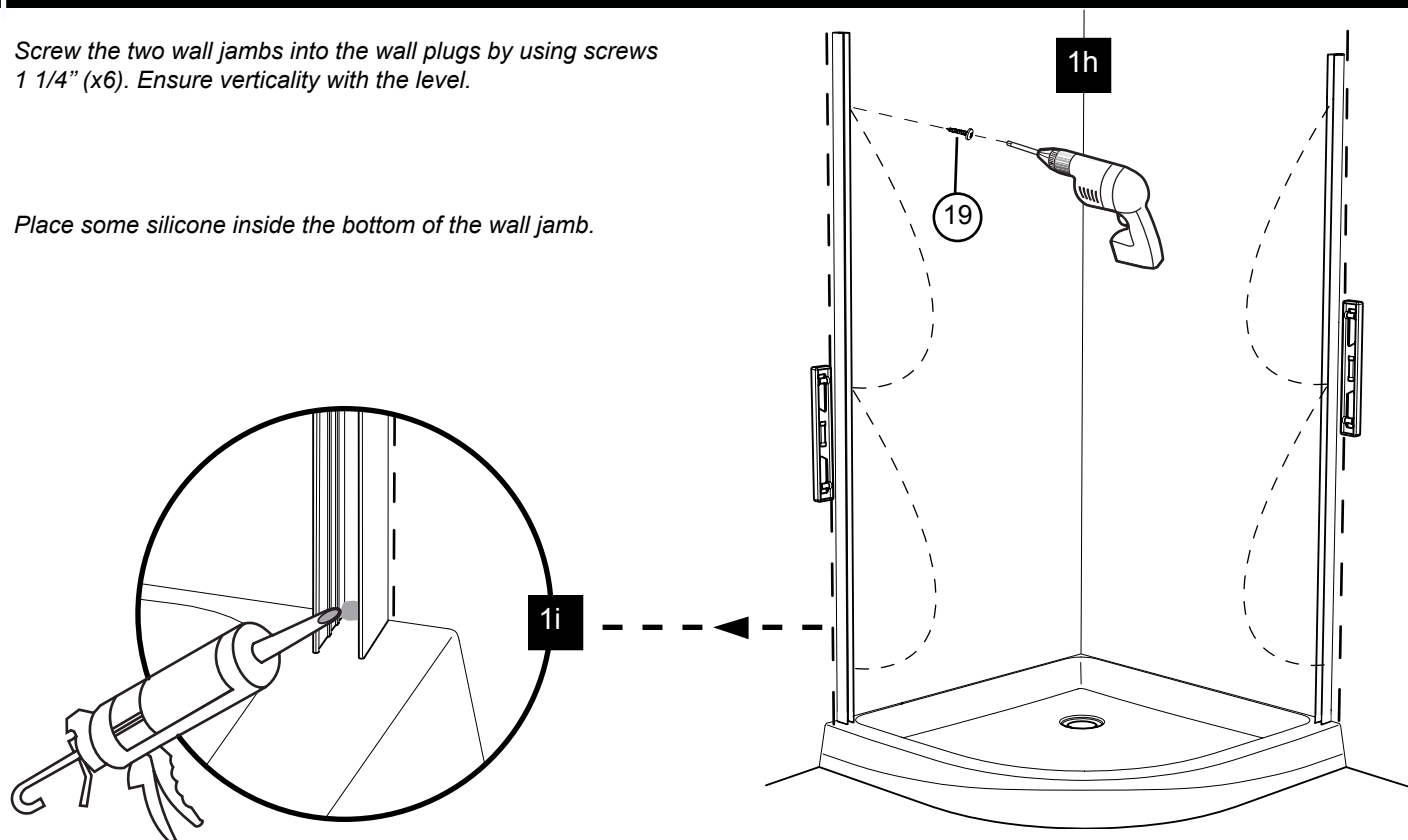
1g



1 WALL JAMBS INSTALLATION (CONTINUED)

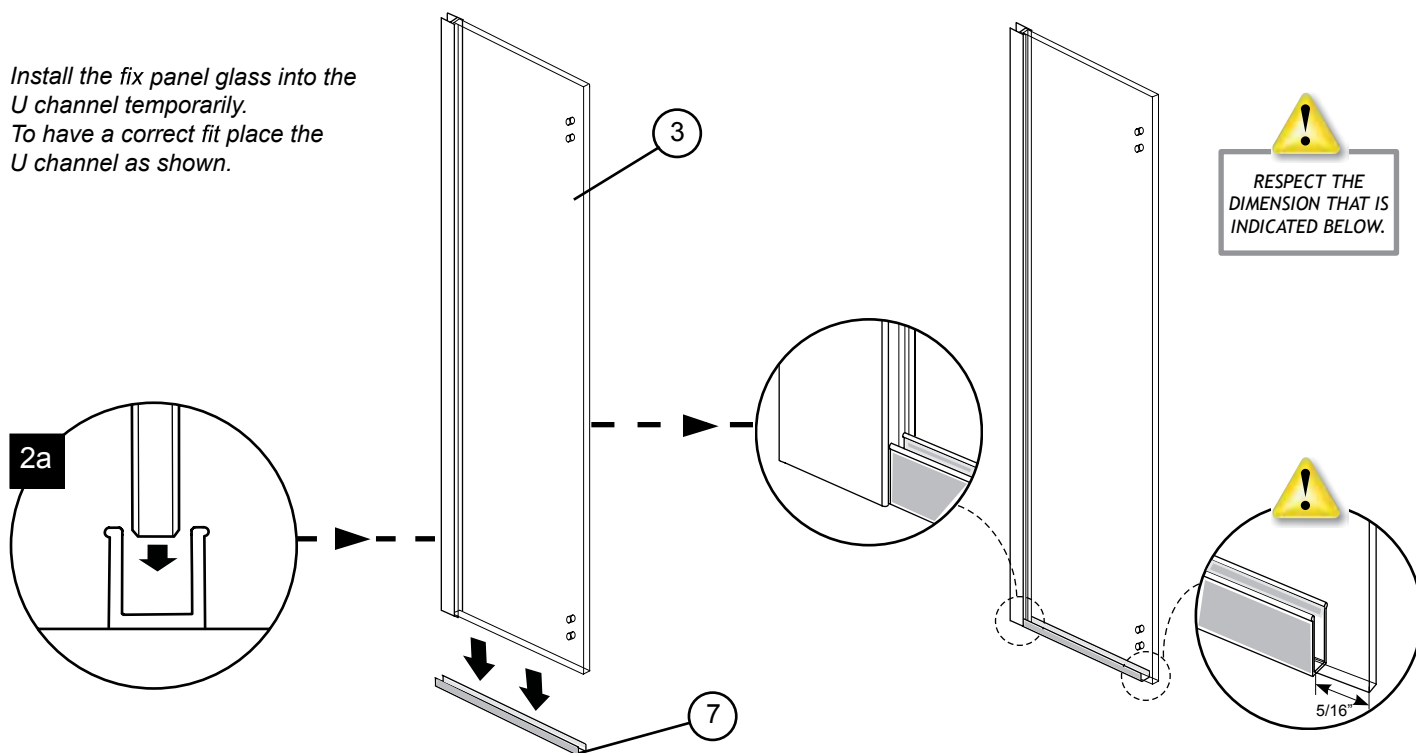
1h. Screw the two wall jambs into the wall plugs by using screws 1 1/4" (x6). Ensure verticality with the level.

1i. Place some silicone inside the bottom of the wall jamb.



2 FIX PANEL ASSEMBLY

2a. Install the fix panel glass into the U channel temporarily. To have a correct fit place the U channel as shown.

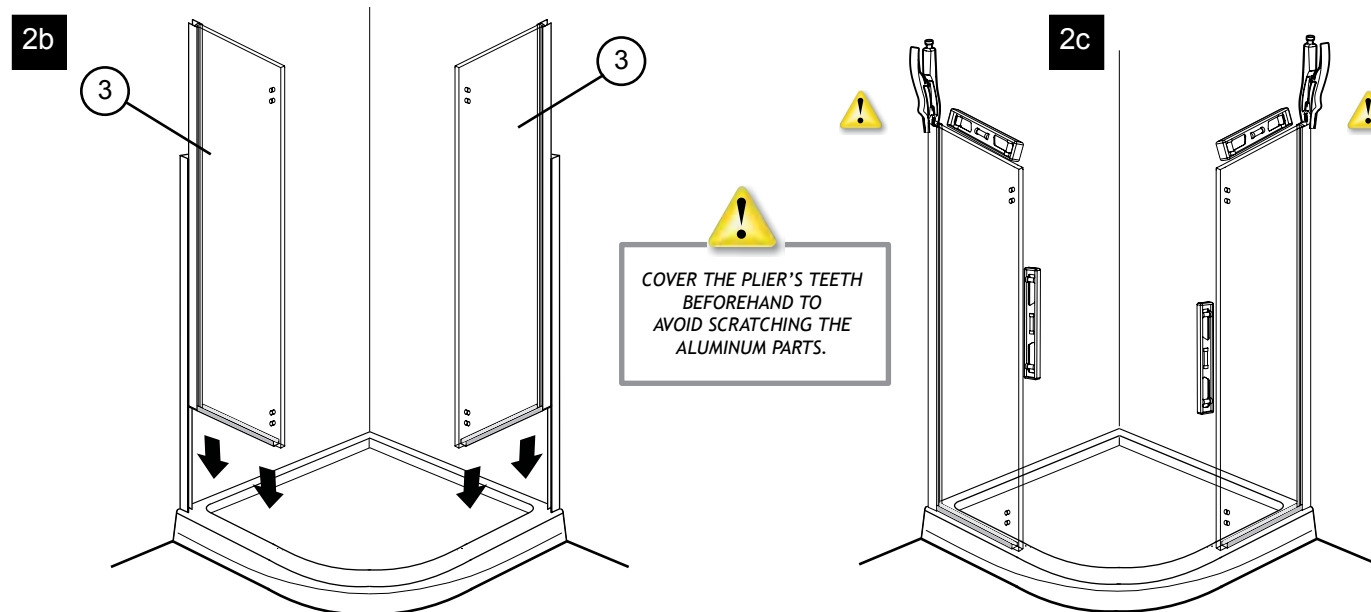


2

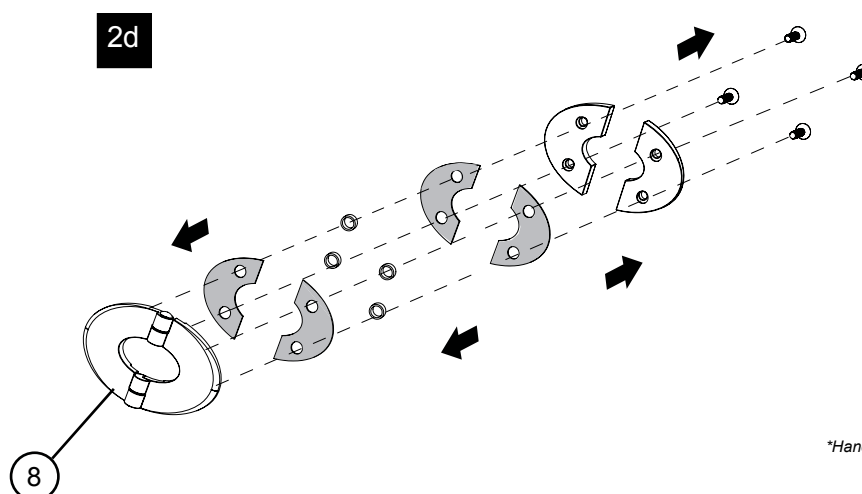
FIX PANEL ASSEMBLY(CONTINUED)

2b. Slide temporarily the two fix panel assemblies into the two wall jambs .

2c. Level the glass panels and lock the position by clamping the wall jambs and expander with pliers.



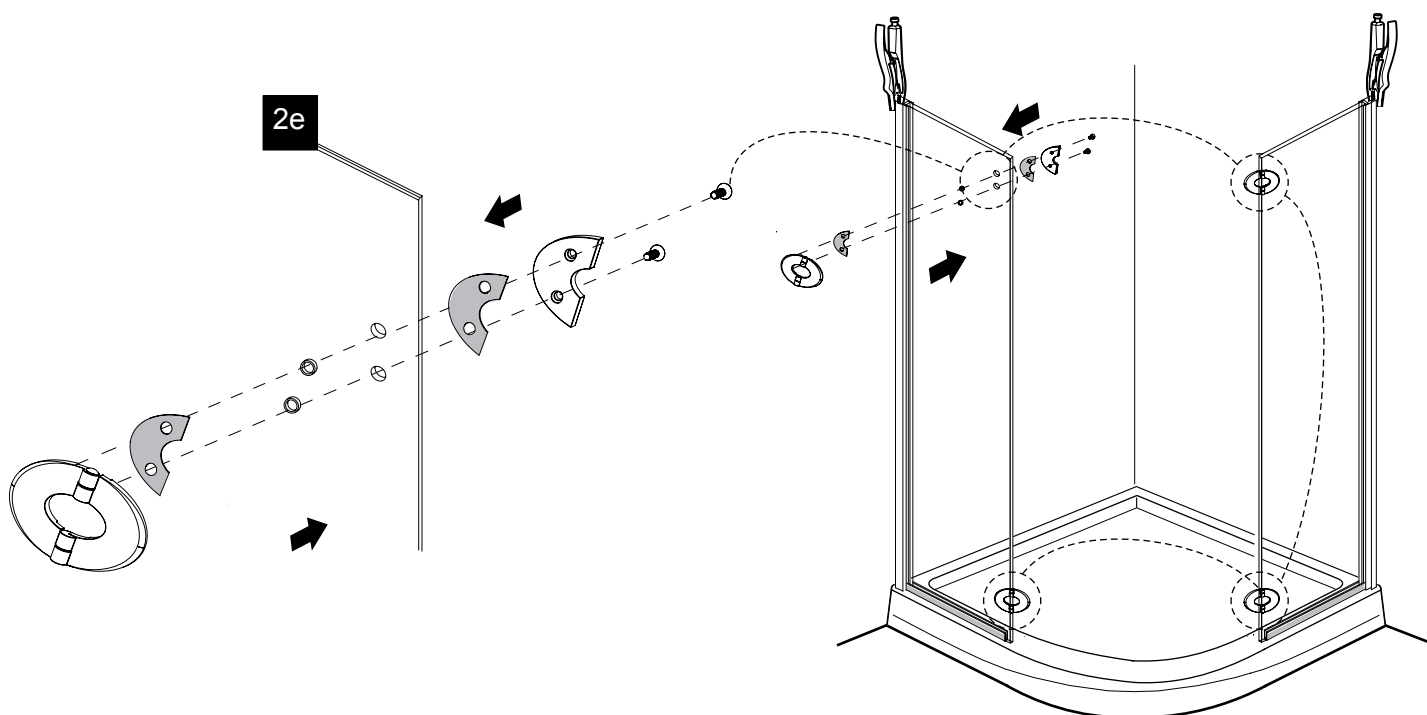
2d. Unscrew the rear side of the 4 hinges as illustrated.



*Handle showed is model (Q)

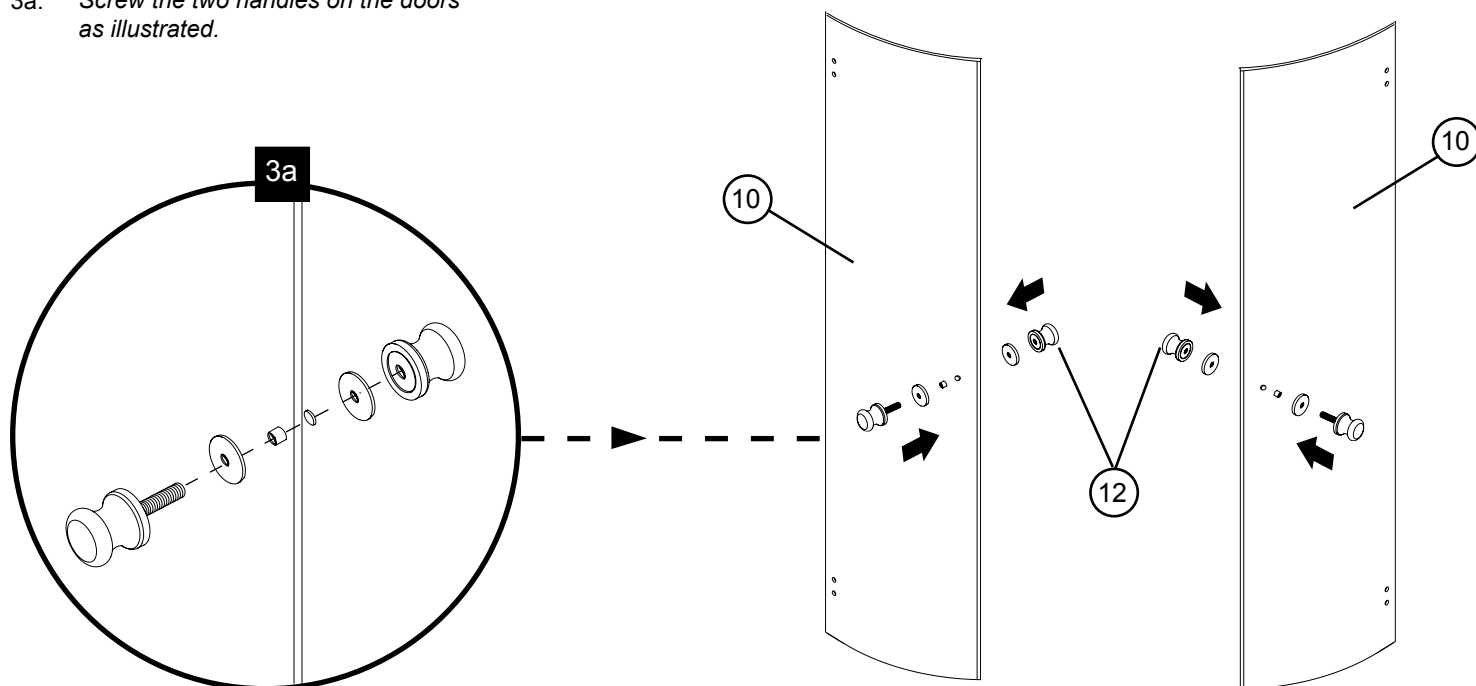
2 FIX PANEL ASSEMBLY(CONTINUED)

- 2e. Fasten the front side and one of the rear side component of the hinges to the fix panels as illustrated. Use the provided hex. Key.



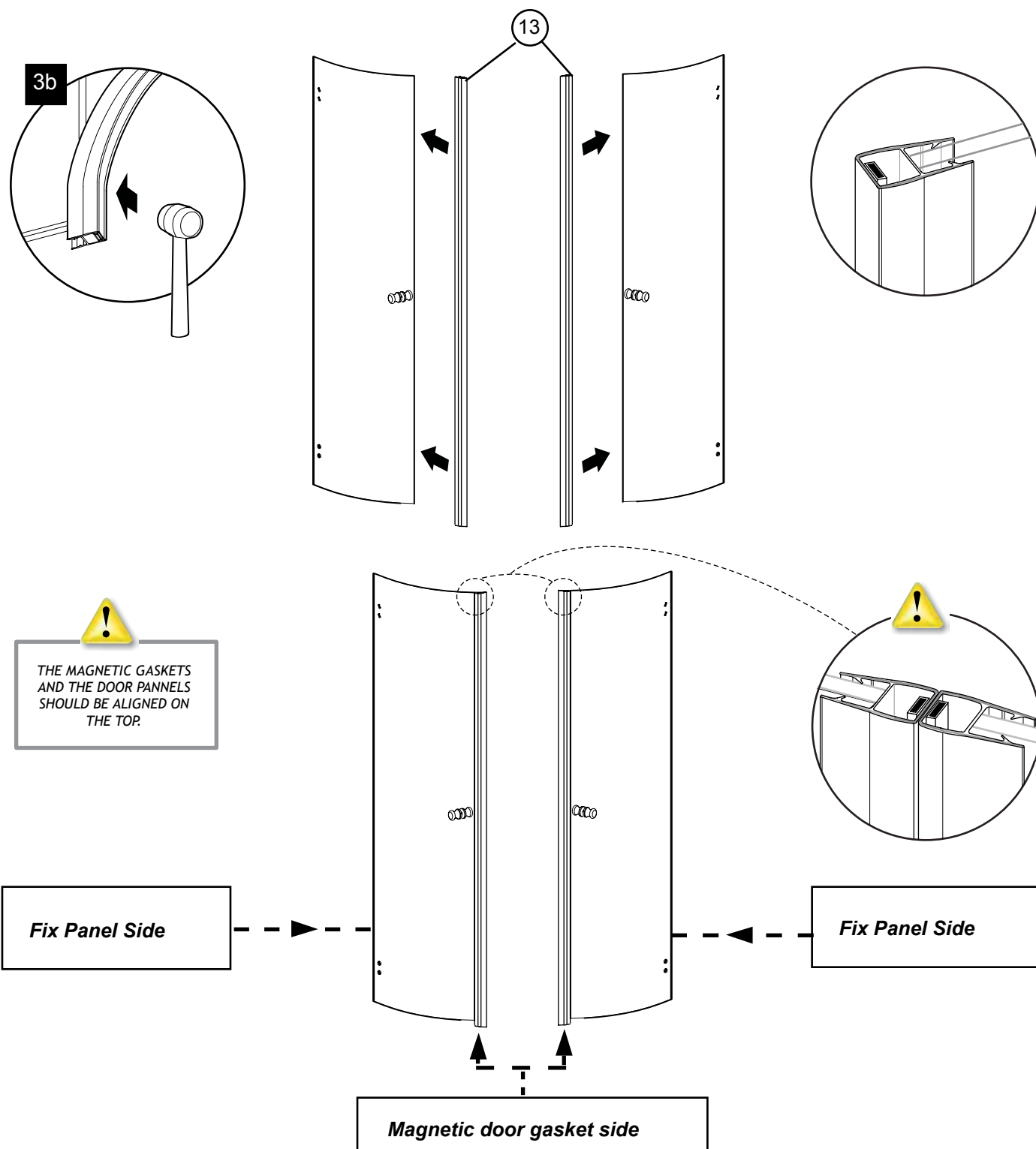
3 DOOR PANEL ASSEMBLY

- 3a. Screw the two handles on the doors as illustrated.



3 DOOR PANEL ASSEMBLY (CONTINUED)

3b. Use a mallet to install the magnetic gaskets on the door panels.



4

CUT THE BOTTOM GASKET

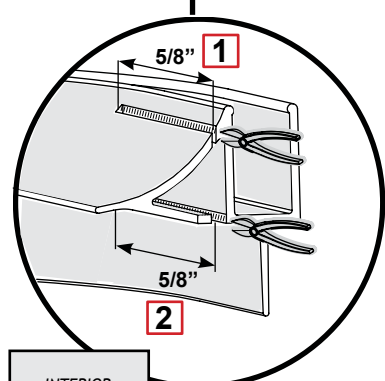
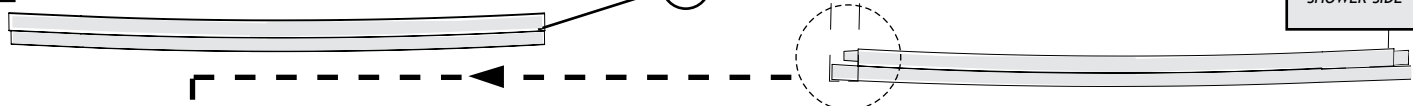
4a. Cut the bottom gaskets with the following path using cutting pliers.

Magnetic door gasket side

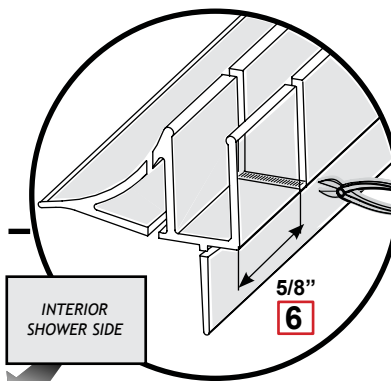
INTERIOR
SHOWER SIDE

4a

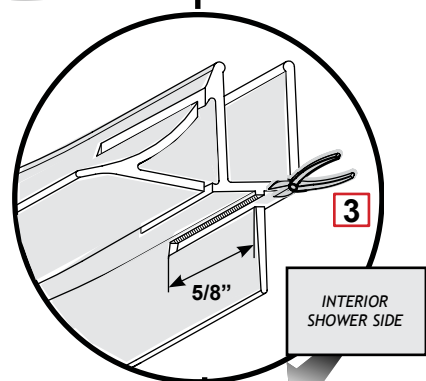
9



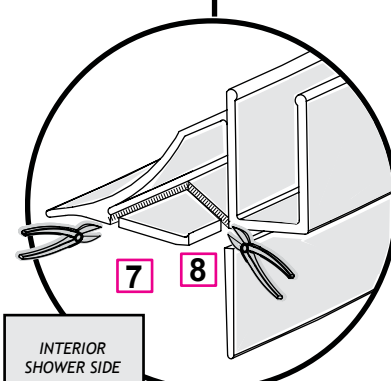
INTERIOR
SHOWER SIDE



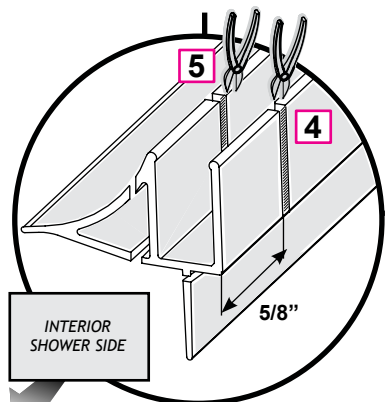
INTERIOR
SHOWER SIDE



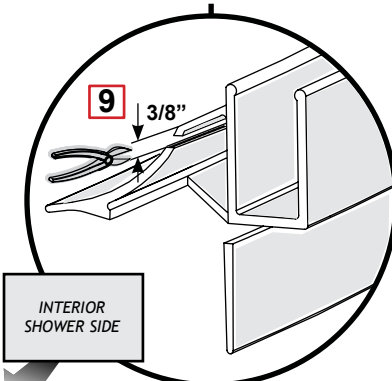
INTERIOR
SHOWER SIDE



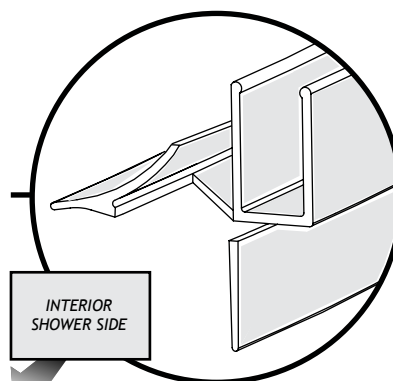
INTERIOR
SHOWER SIDE



INTERIOR
SHOWER SIDE

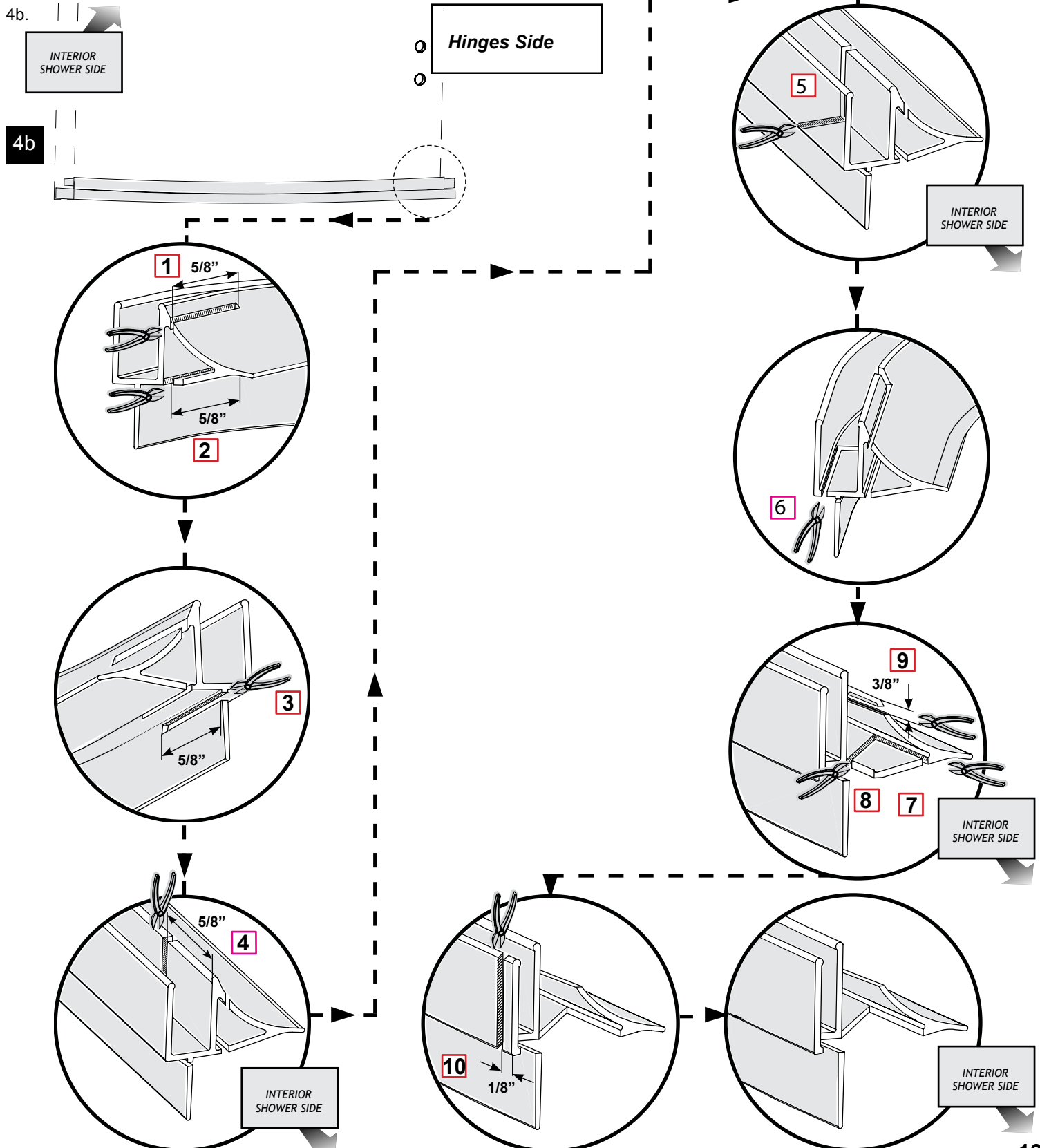


INTERIOR
SHOWER SIDE



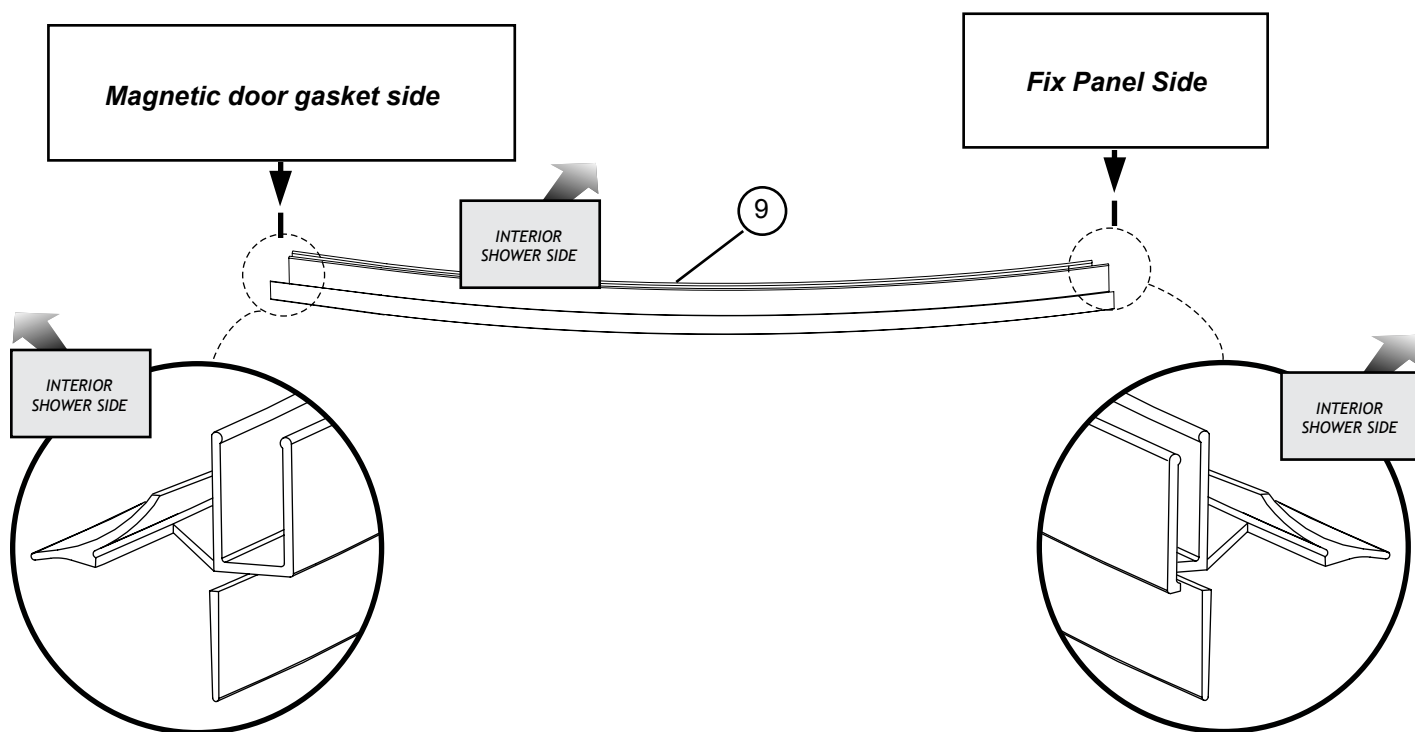
INTERIOR
SHOWER SIDE

4 CUT THE BOTTOM GASKET (CONTINUED)

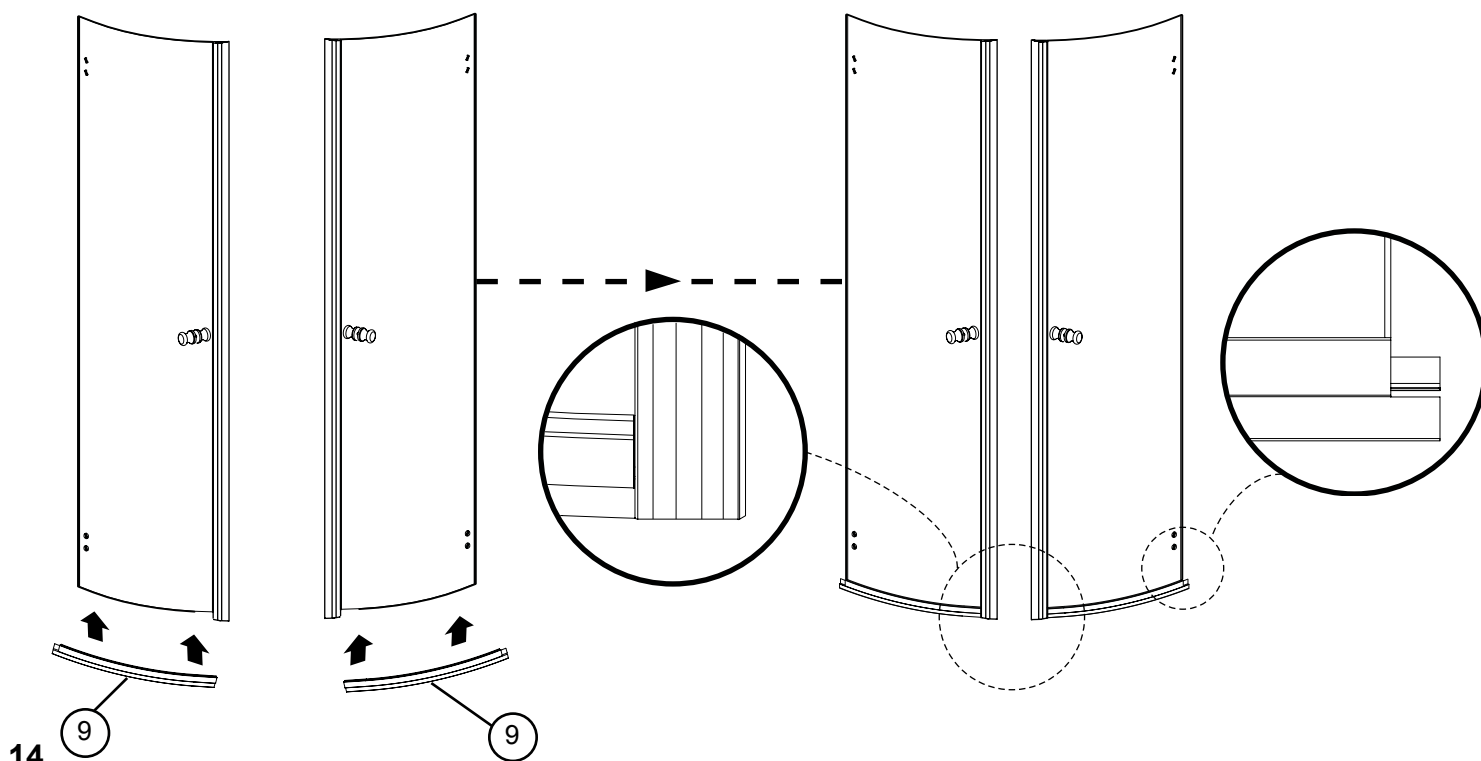


4 BOTTOM GASKET INSTALLATION (CONTINUED)

4c. Use a mallet to install the bottom gaskets on the door panels.

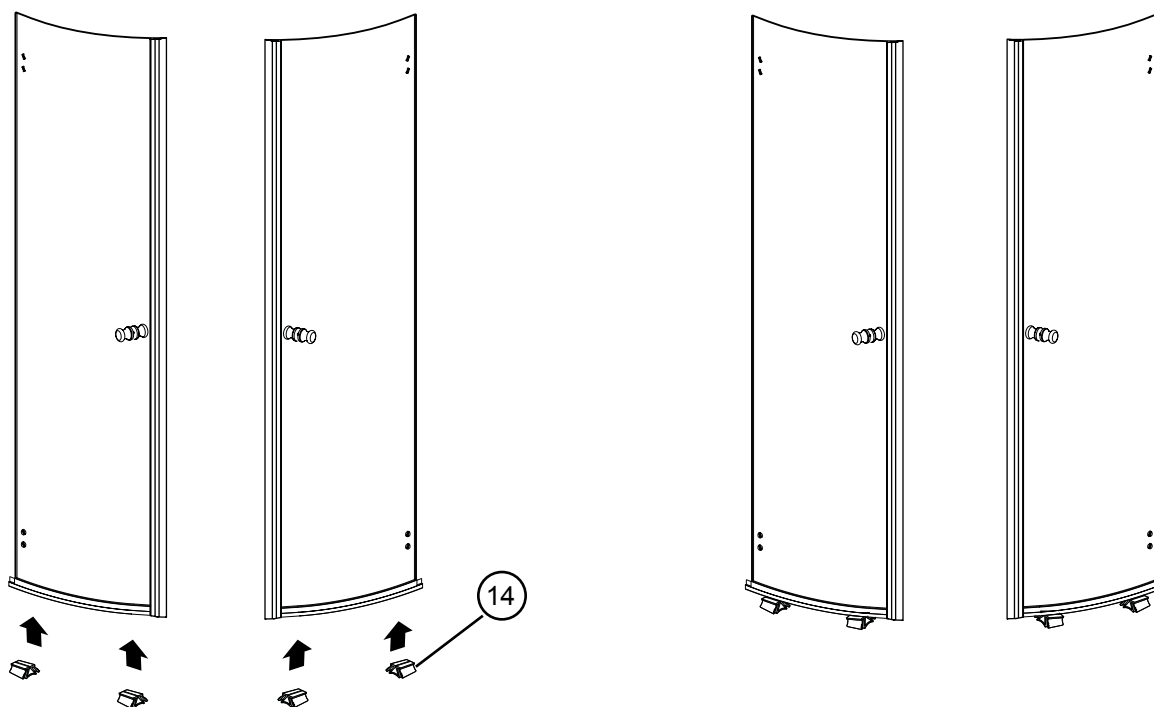
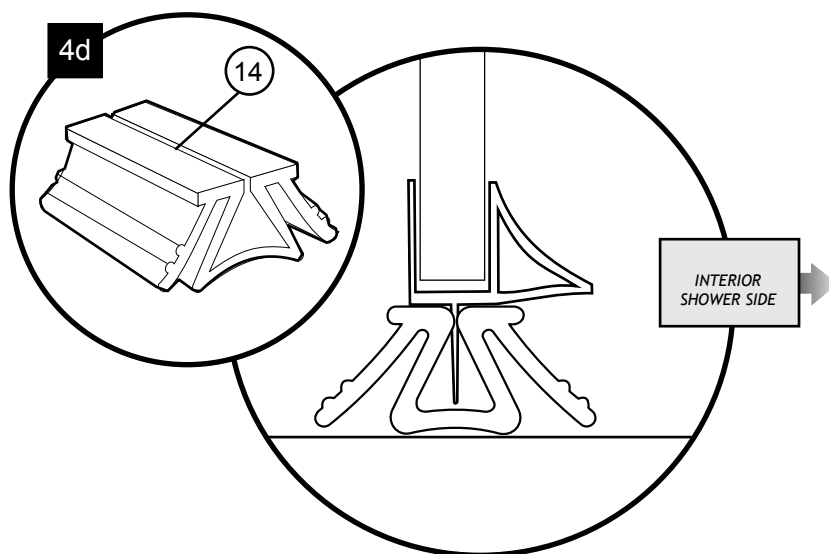


4c



4 BOTTOM GASKET INSTALLATION (CONTINUED)

4d. Place the 4 spacing blocks under the bottom gaskets as illustrated.

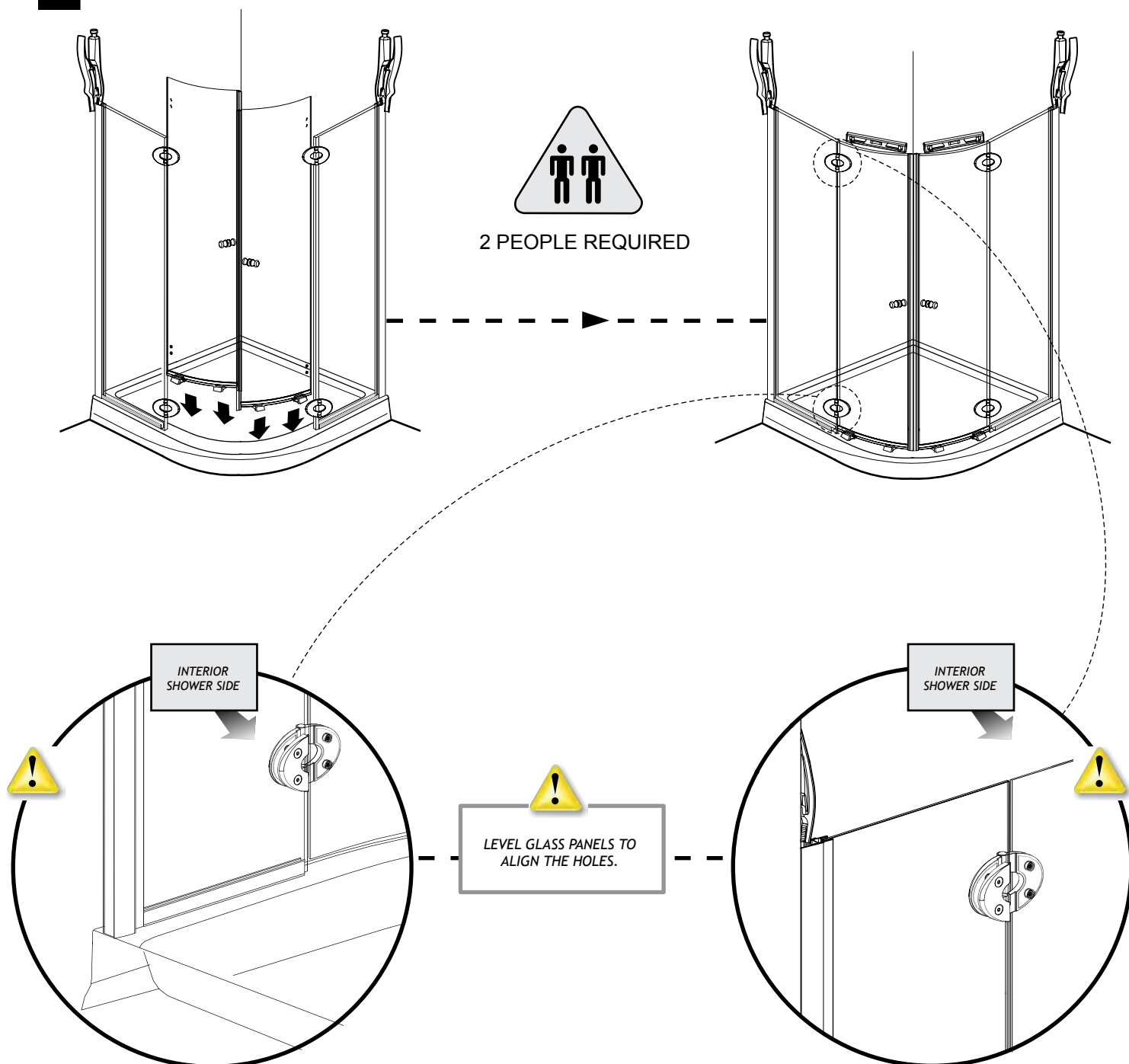


5

DOOR PANEL INSTALLATION

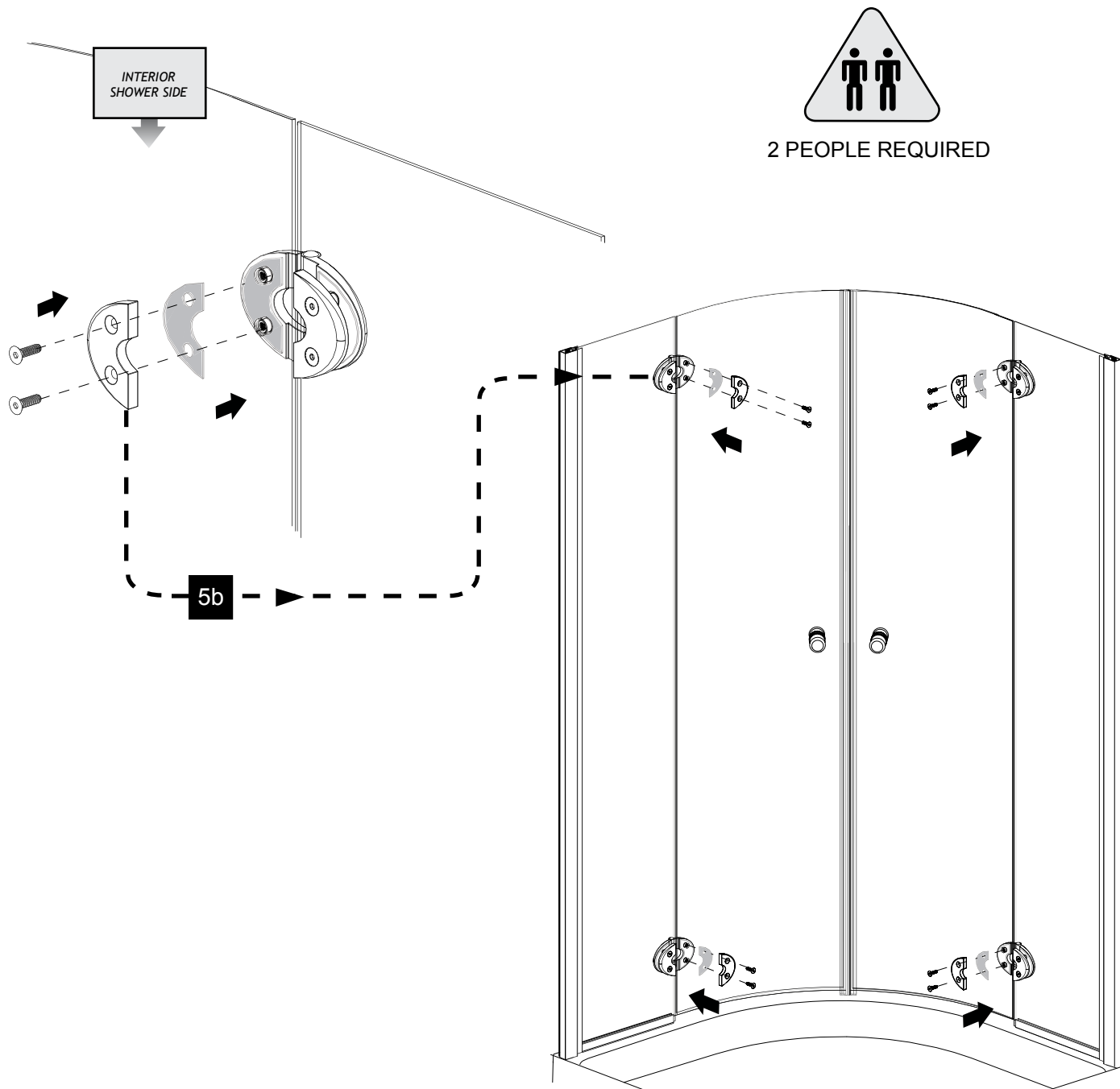
- 5a. Place the door centered on the base threshold.
Level and align the holes of the doors and fix panels.

5a



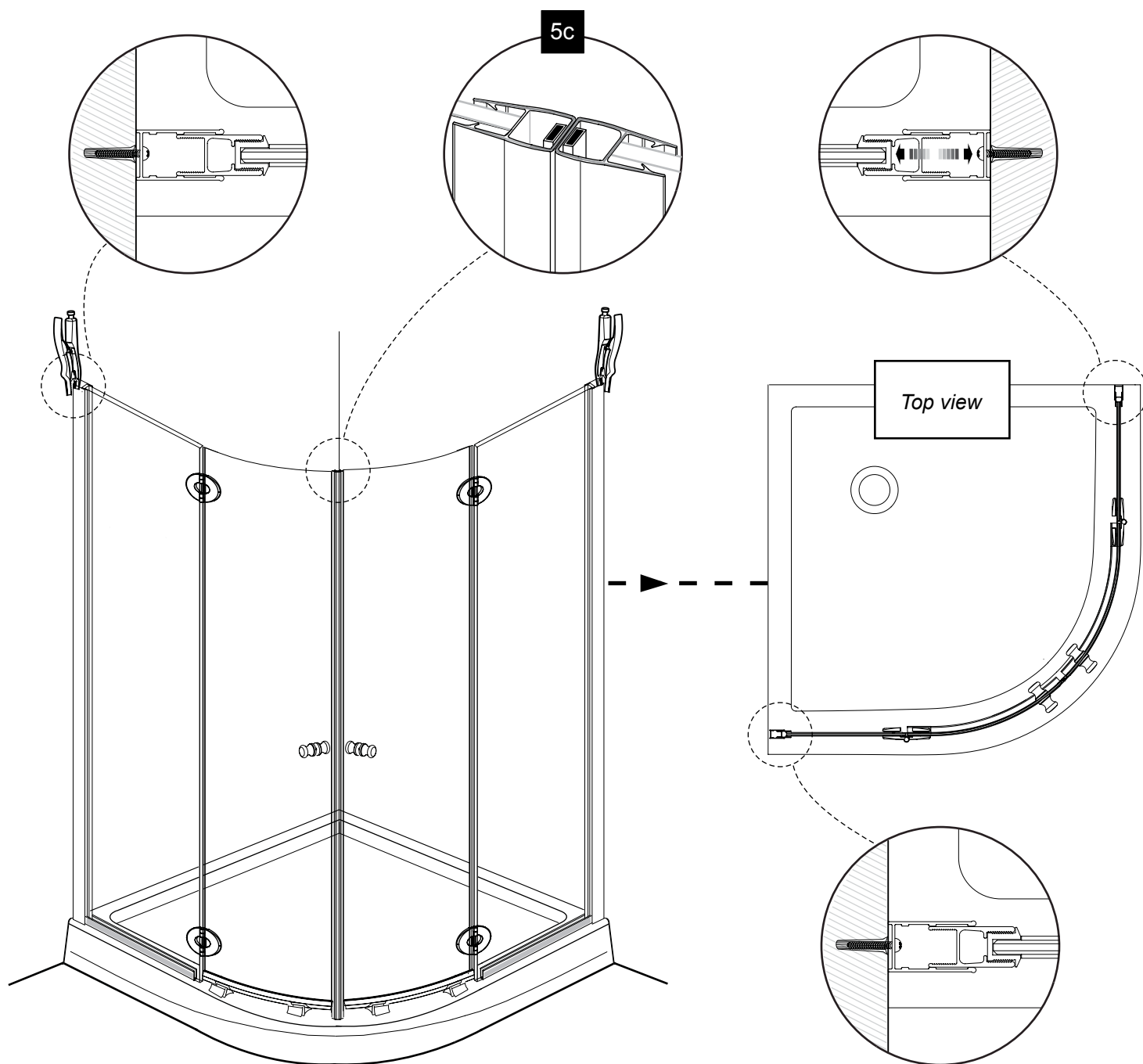
5 DOOR PANEL INSTALLATION (CONTINUED)

- 5b. Fasten the remaining rear side component of the hinges to the doors as illustrated. Use the provided hex. Key.



5 DOOR PANEL INSTALLATION (CONTINUED)

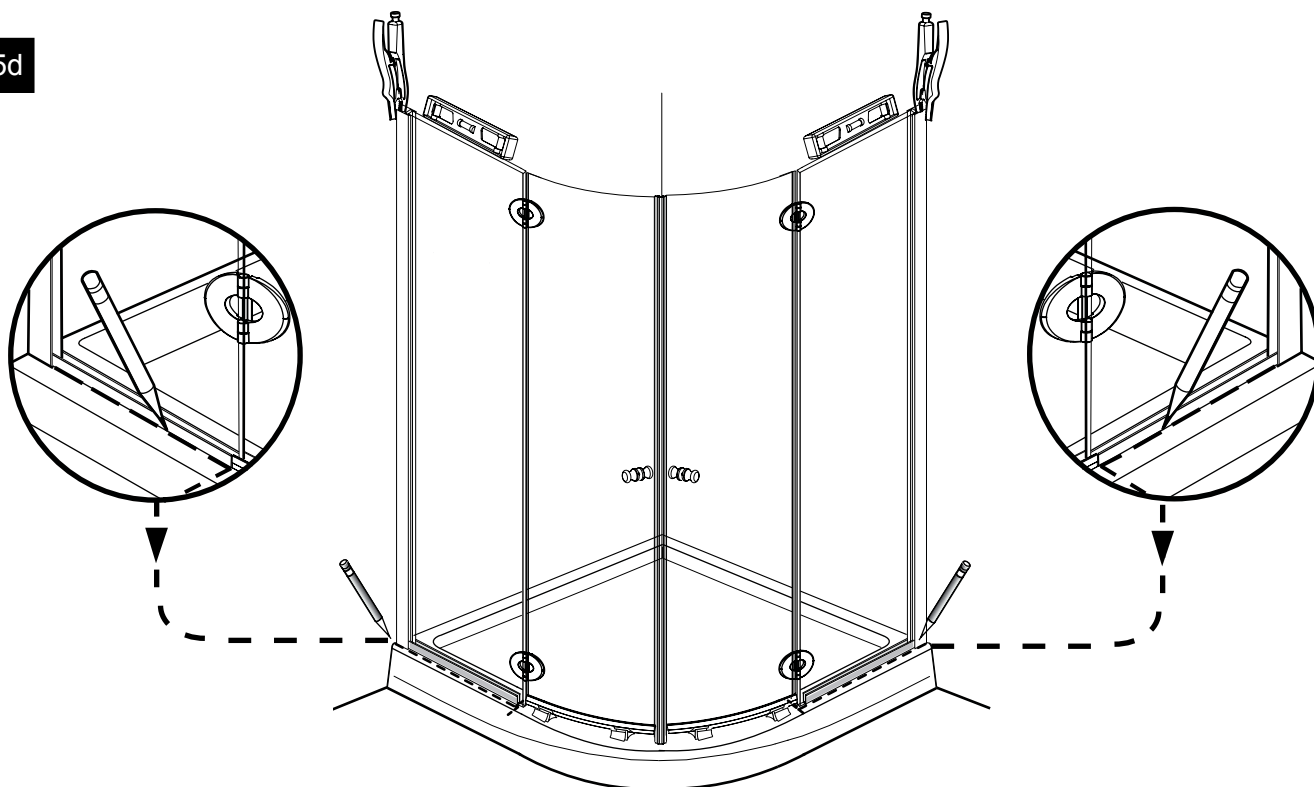
- 5c. *Adjust the wall jambs and expanders so that the doors are closing properly. The magnetic gaskets must be aligned and in contact.*



5 DOOR PANEL INSTALLATION (CONTINUED)

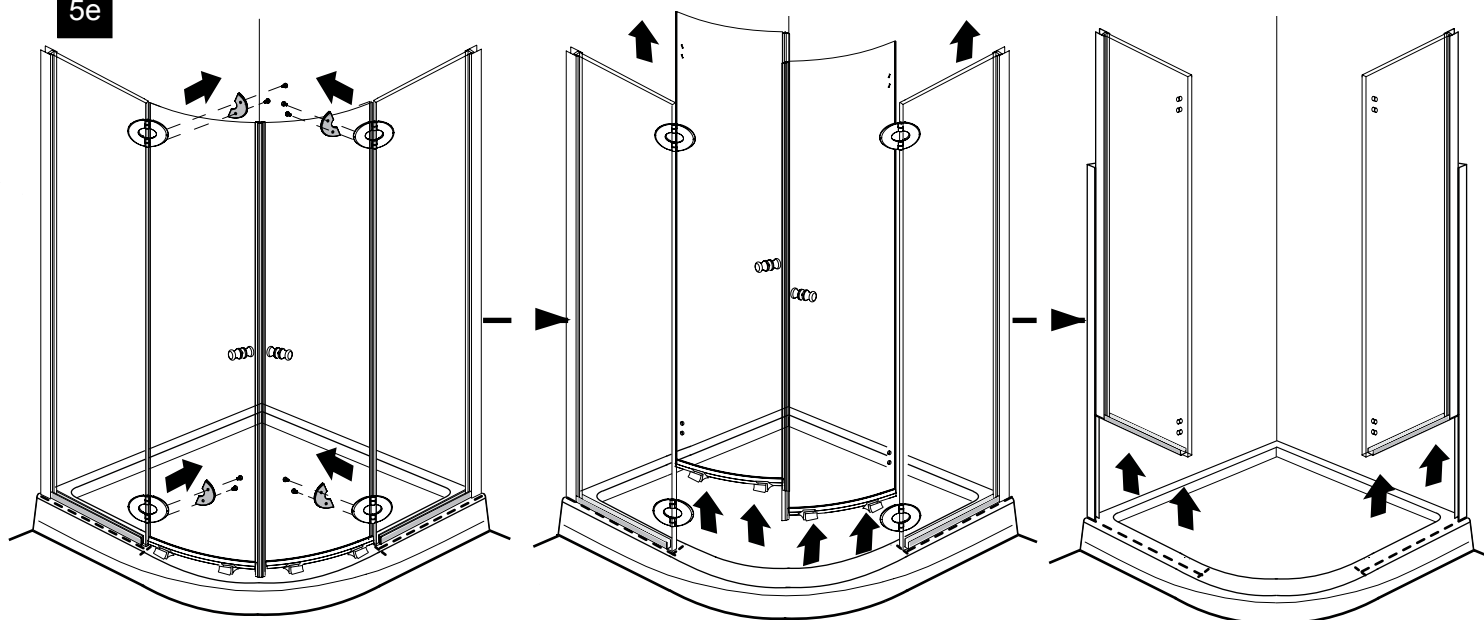
5d. Level and mark the position of the U channel on the base.

5d



5e. Remove the back side of the hinges the door and fix panels .

5e

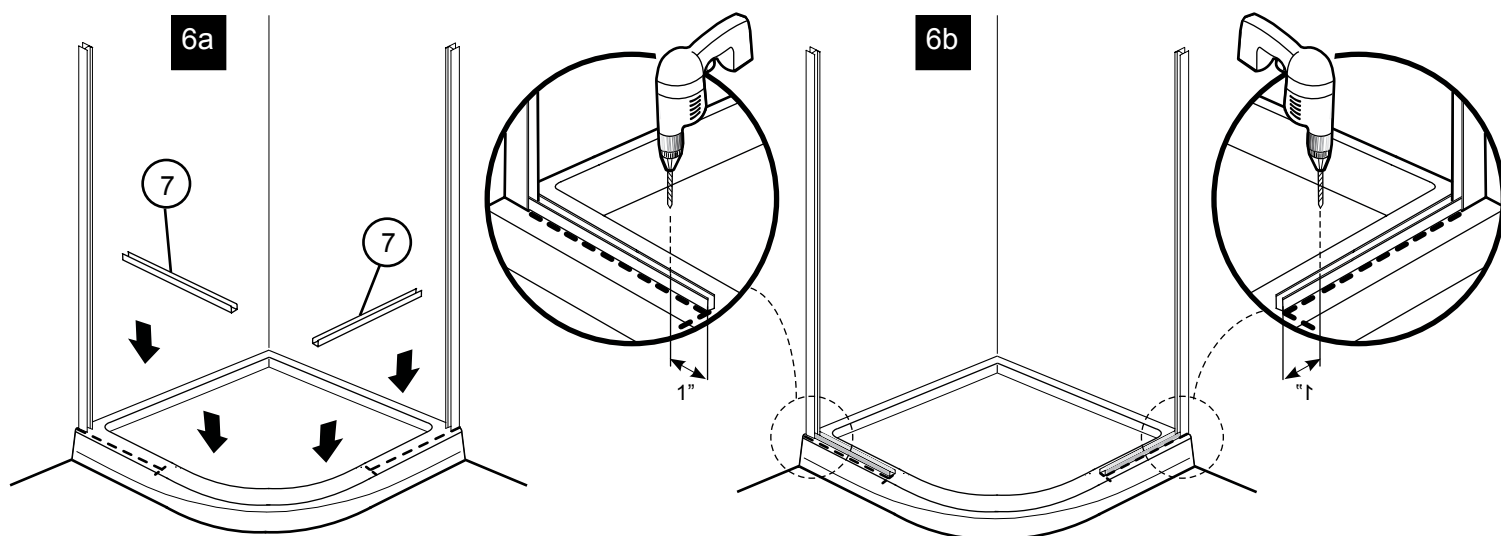


6

FIX PANEL INSTALLATION

6a. Place the U channels on the position marks.

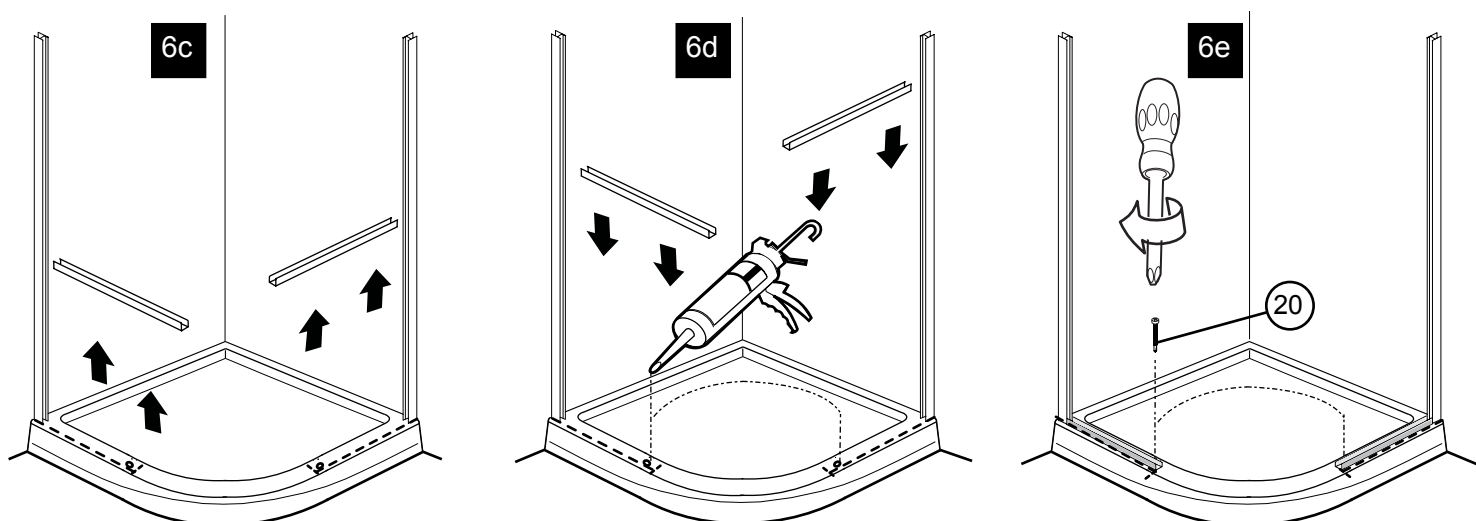
6b. Drill holes through the U channels using Ø1/8" drill bit .



6c. Remove the two U channels.

6d. Insert one drop of silicone in each hole in the base before replacing the aluminum "U" channels.

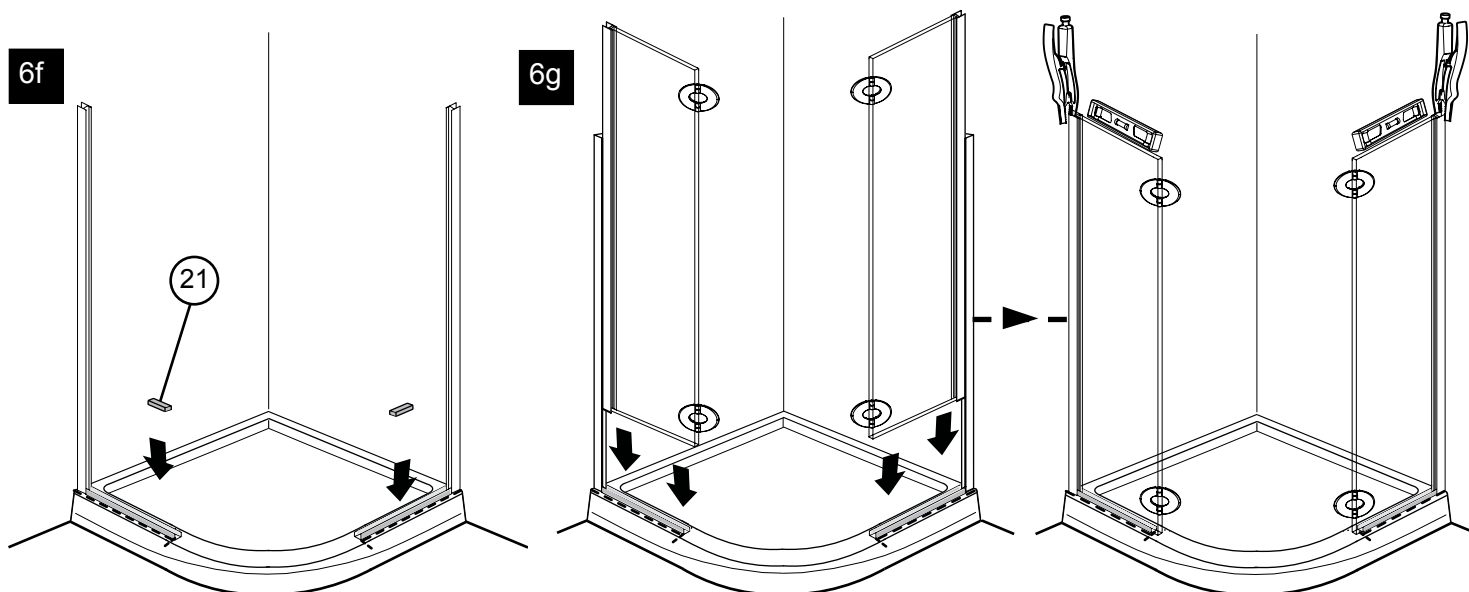
6e. Screw the two aluminum profiles into the base by using screws 1 1/4" (x2).



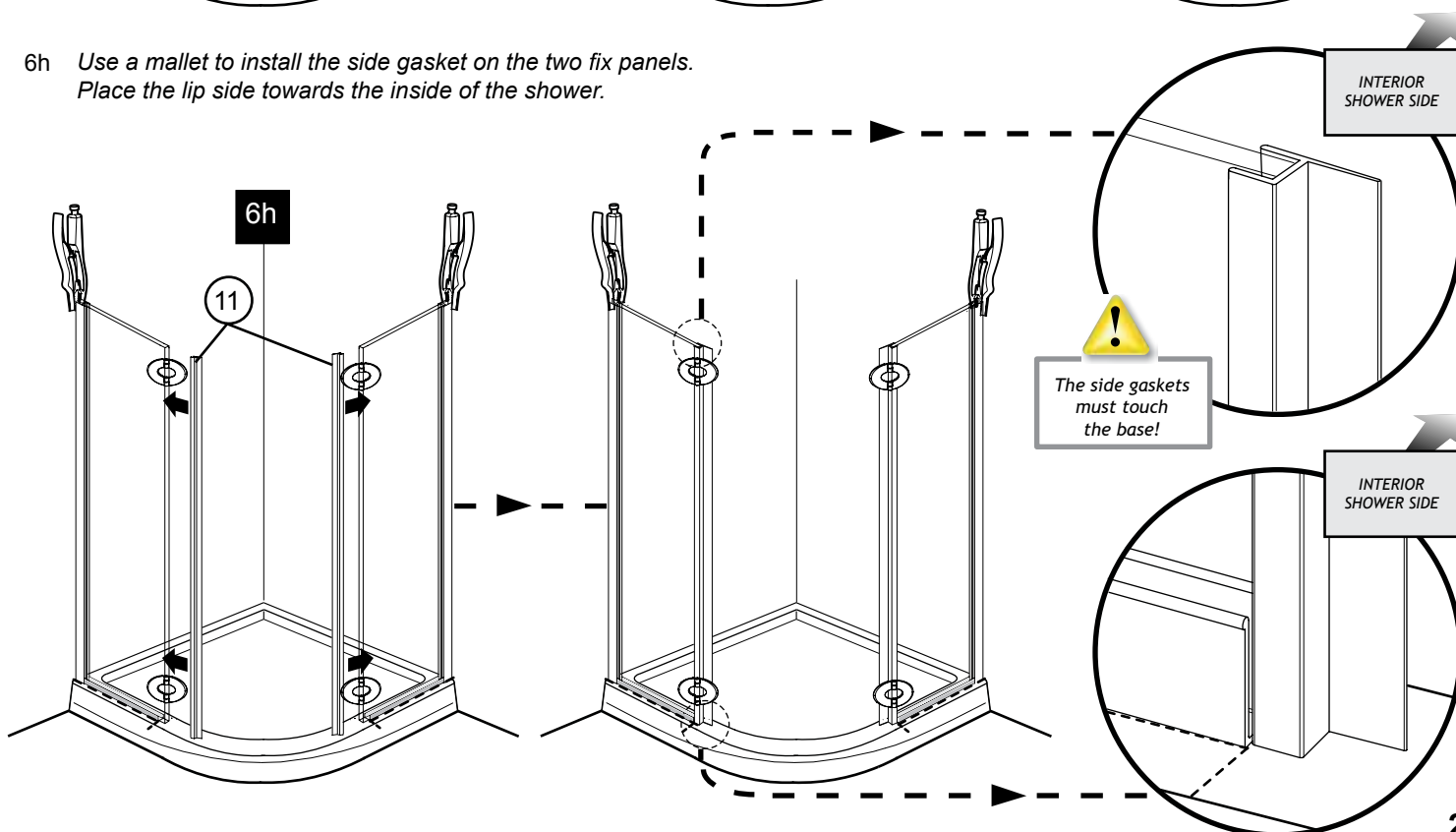
6 FIX PANEL INSTALLATION (CONTINUED)

6f. Place the clear setting blocks 1 over the screws .

6g. Insert the two fix panels into the wall jambs and the aluminium "U" channels and clamp the expanders to the wall jambs. Level the glass panels and if necessary use also the clear setting blocks 2 (#22) .

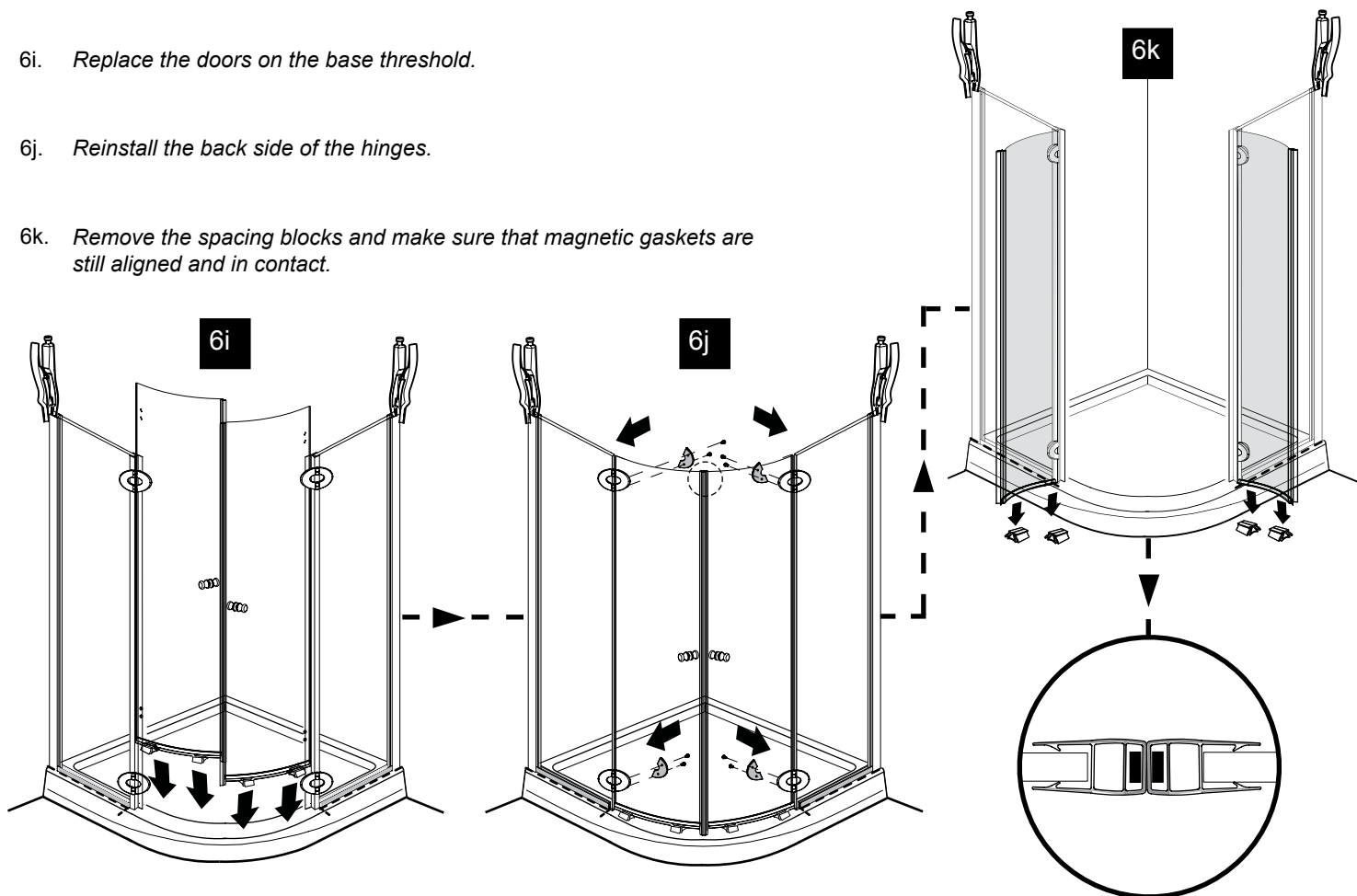


6h. Use a mallet to install the side gasket on the two fix panels. Place the lip side towards the inside of the shower.



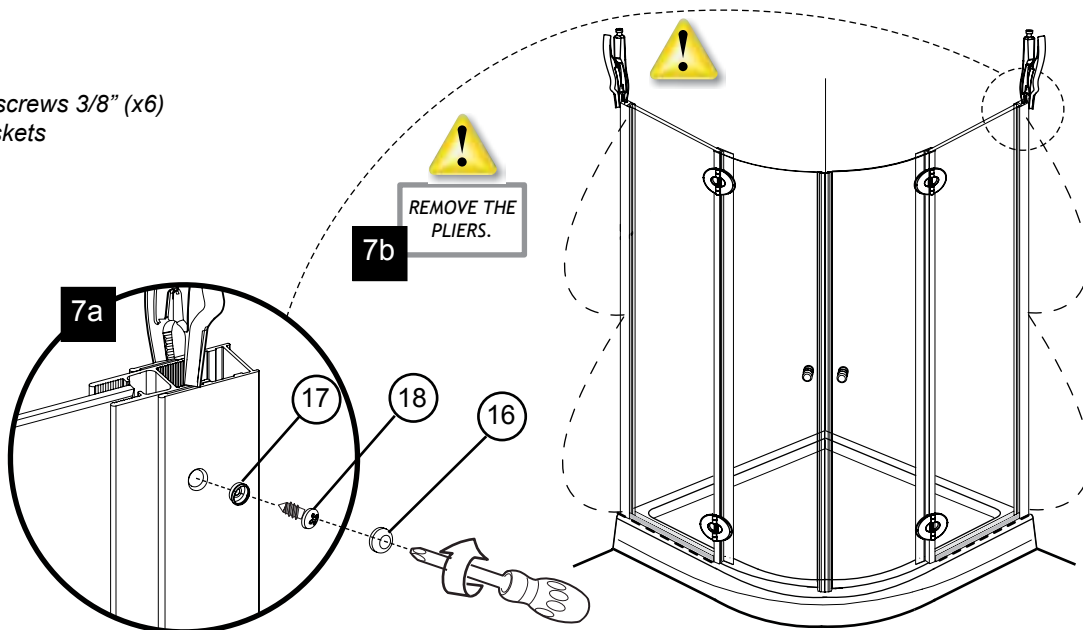
6 FIX PANEL INSTALLATION (CONTINUED)

- 6i. Replace the doors on the base threshold.
- 6j. Reinstall the back side of the hinges.
- 6k. Remove the spacing blocks and make sure that magnetic gaskets are still aligned and in contact.



7 SECURE THE EXPANDERS

- 7a. Secure the fix panels with the screws 3/8" (x6) ensuring that the magnetic gaskets are still in contact. Place the caps on the heads of apparent screws.
- 7b. Remove the plier after the fix panels are secured.



8 SUPPORT BARS INSTALLATION

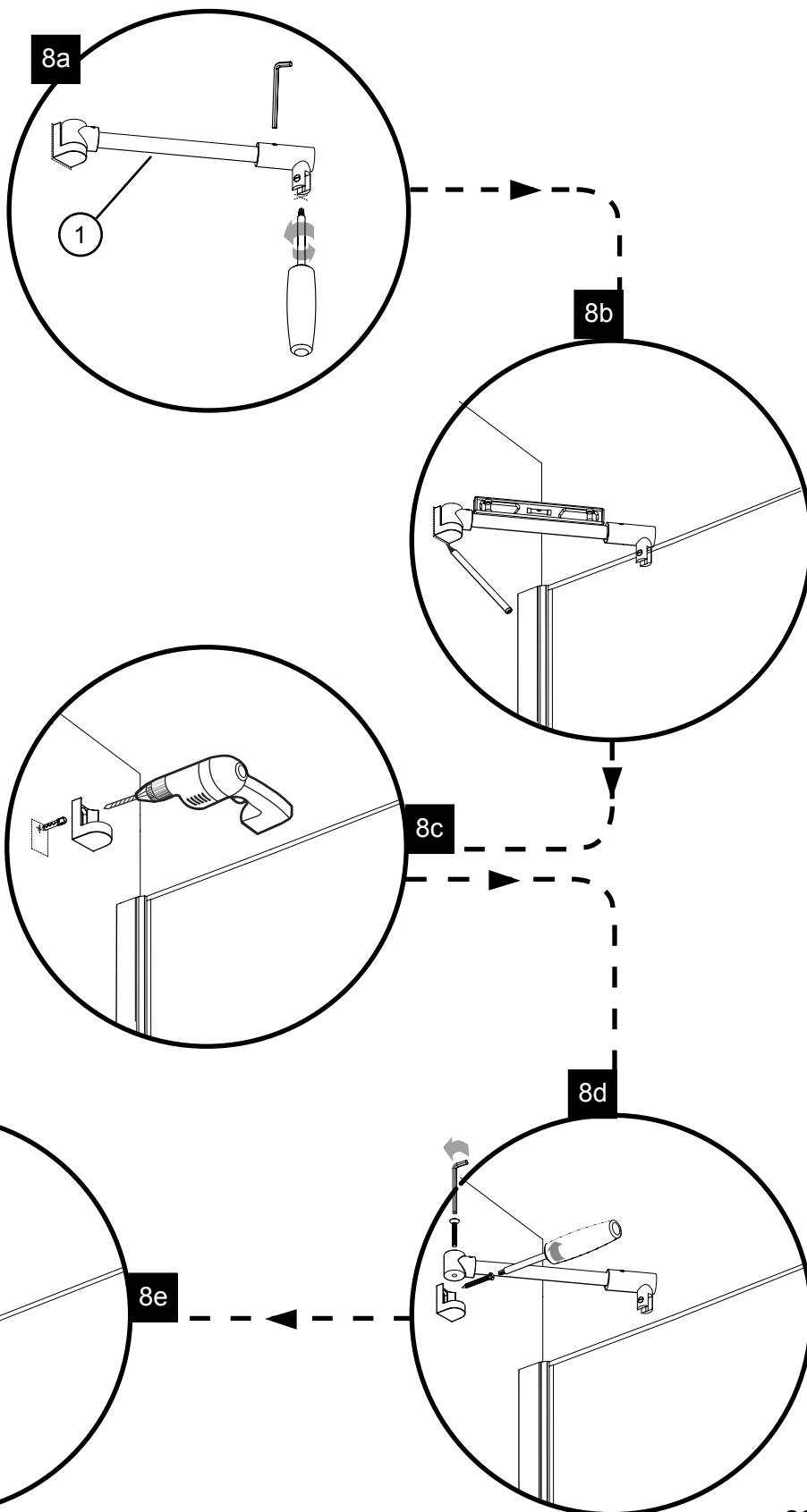
8a. Loosen the glass clip. Align the slot to the fixed panel. The slotted screw head should be on the inside of the shower.

8b. Rest the support bar on the fixed panel inside the tub. Level it and trace an arc on the wall.

8c. Isolate the wall bracket and drill a hole, using a 1/4" drill bit through the wall. Locate the position of this hole by way of the wall bracket. Insert a wall plug.

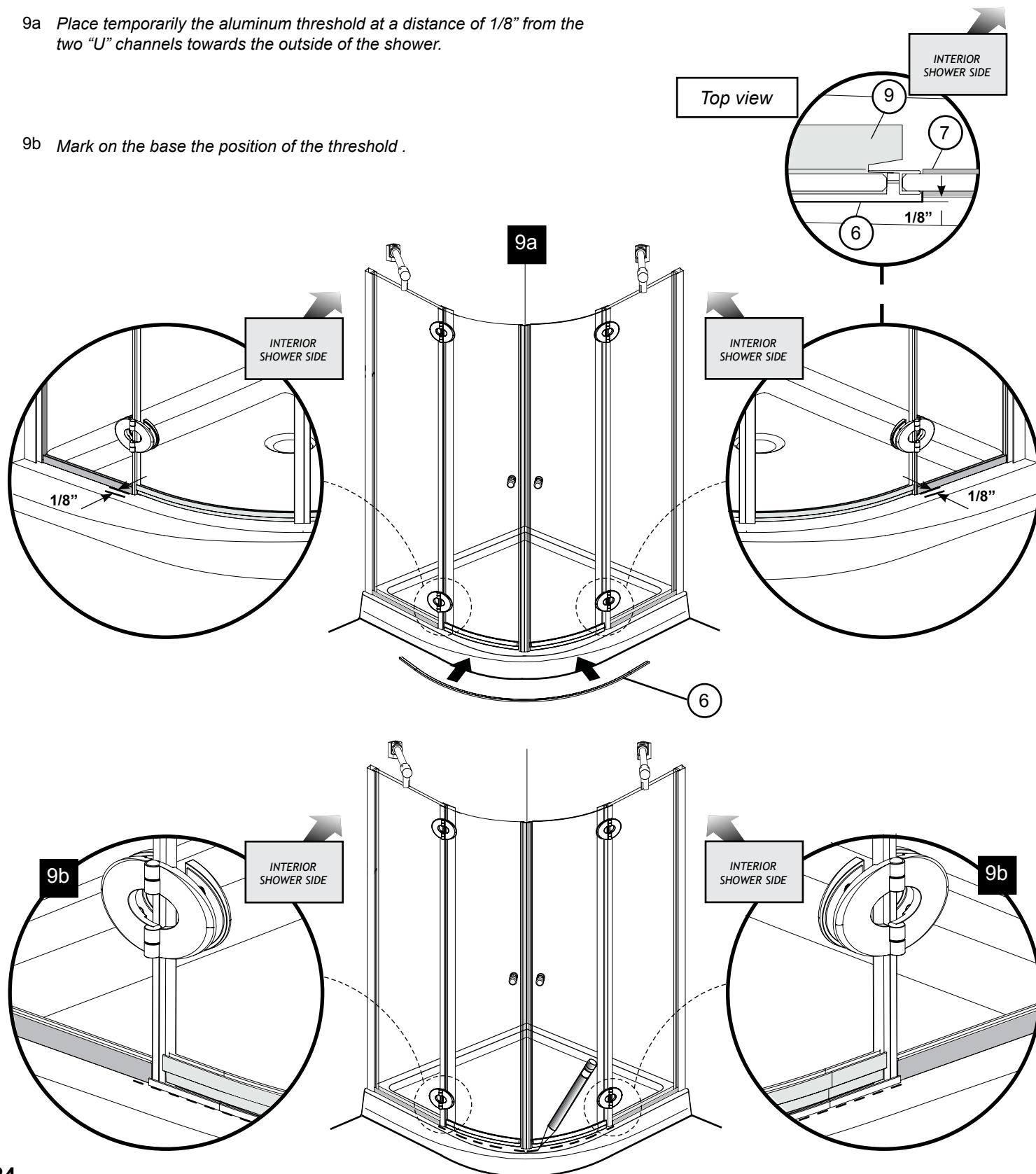
8d. Secure the wall bracket to the wall by way of the screw. Assemble the cylindrical joint to the wall bracket.

8e. Secure the glass fastener and wall bracket screws to complete the installation process.



9a Place temporarily the aluminum threshold at a distance of 1/8" from the two "U" channels towards the outside of the shower.

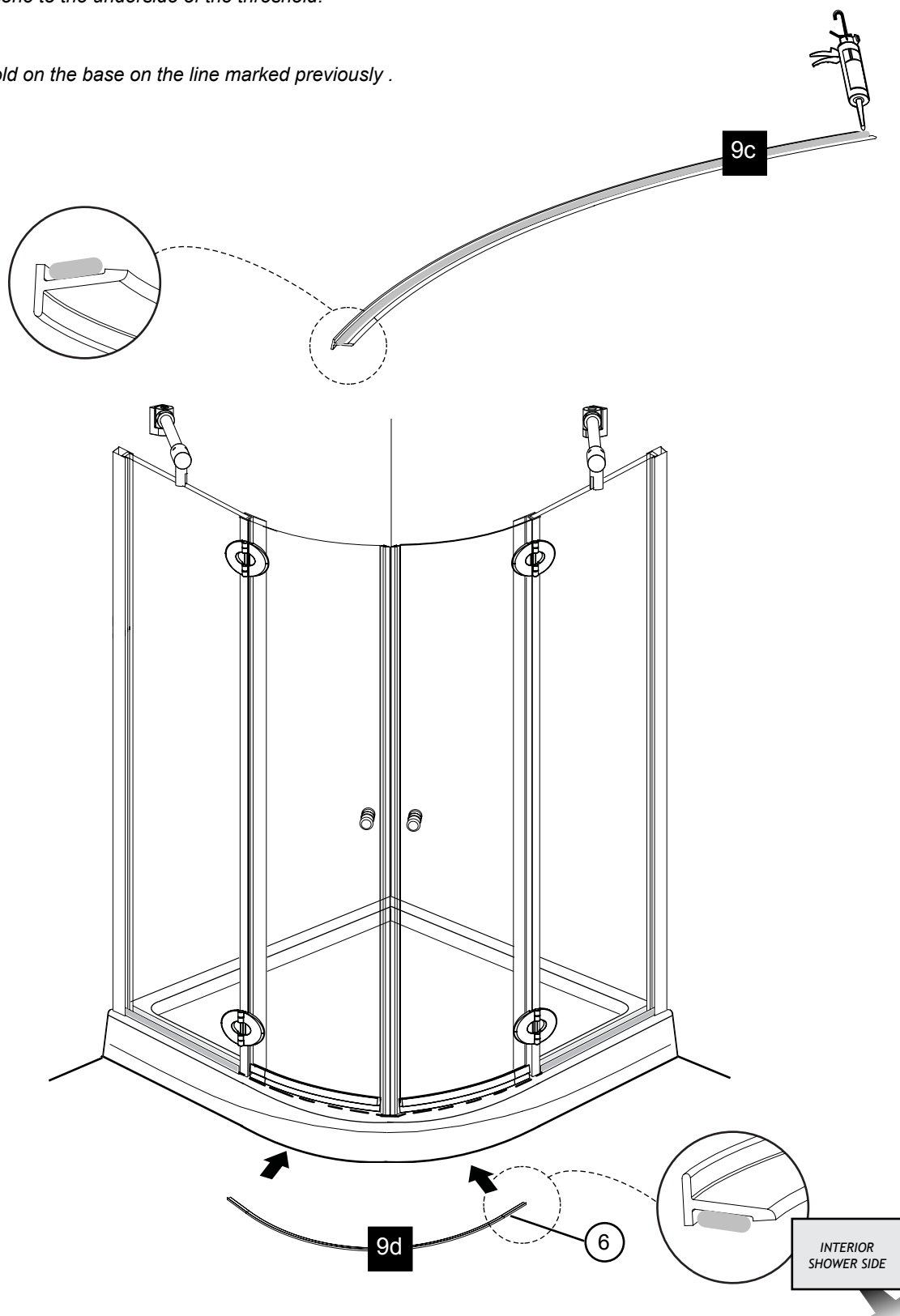
9b Mark on the base the position of the threshold.



9 ACCESSORIES INSTALLATION (CONTINUED)

9c Apply a bead of silicone to the underside of the threshold.

9d Replace the threshold on the base on the line marked previously .



10

SEALING

10a *Silicone the outside of the shower, around the wall jamb, below of the fix panels and the exterior side of the aluminium threshold and around the U channels.*

10b *Wait 24 hours before using the shower to dry the silicon.*

