

P-DR1WT-60
OWNER'S MANUAL

Alumax
PIPELINE

TUB ENCLOSURES



2 PEOPLE REQUIRED



**IT IS MANDATORY TO HAVE A WALL STUD ON EACH SIDE OF THE
SHOWER UNIT TO SECURELY FASTEN THE RAIL TO THE WALLS.**

P011

TABLE OF CONTENTS

PARTS LISTING	3
PROVIDED HARDWARE	4
REQUIRED TOOLS AND MATERIALS	4
GASKET INSTALLATION.....	5
RUNNING RAIL	6
GLASS HOLDERS	7
GLASS CLIPS.....	7
FIXED PANEL PLACEMENT	8
FIXED PANEL PLACEMENT (CONTINUED)	9
THRESHOLD	9
WALL BRACKETS	10
SLIDING DOOR	11
SLIDING DOOR (CONTINUED)	12
STRAIGHT HANDLE	12
GASKET INSTALLATION.....	13
STOPPERS.....	14
SILICONE.....	14

GENERAL INSTRUCTIONS

- Read this manual carefully and completely before proceeding.
- Product specifications are subject to change without notice. Use the installation instructions supplied with the product.

● SAFETY

- *It is recommended that you wear safety glasses at all times during the installation.*
- *At all times, 2 people are required for this installation.*

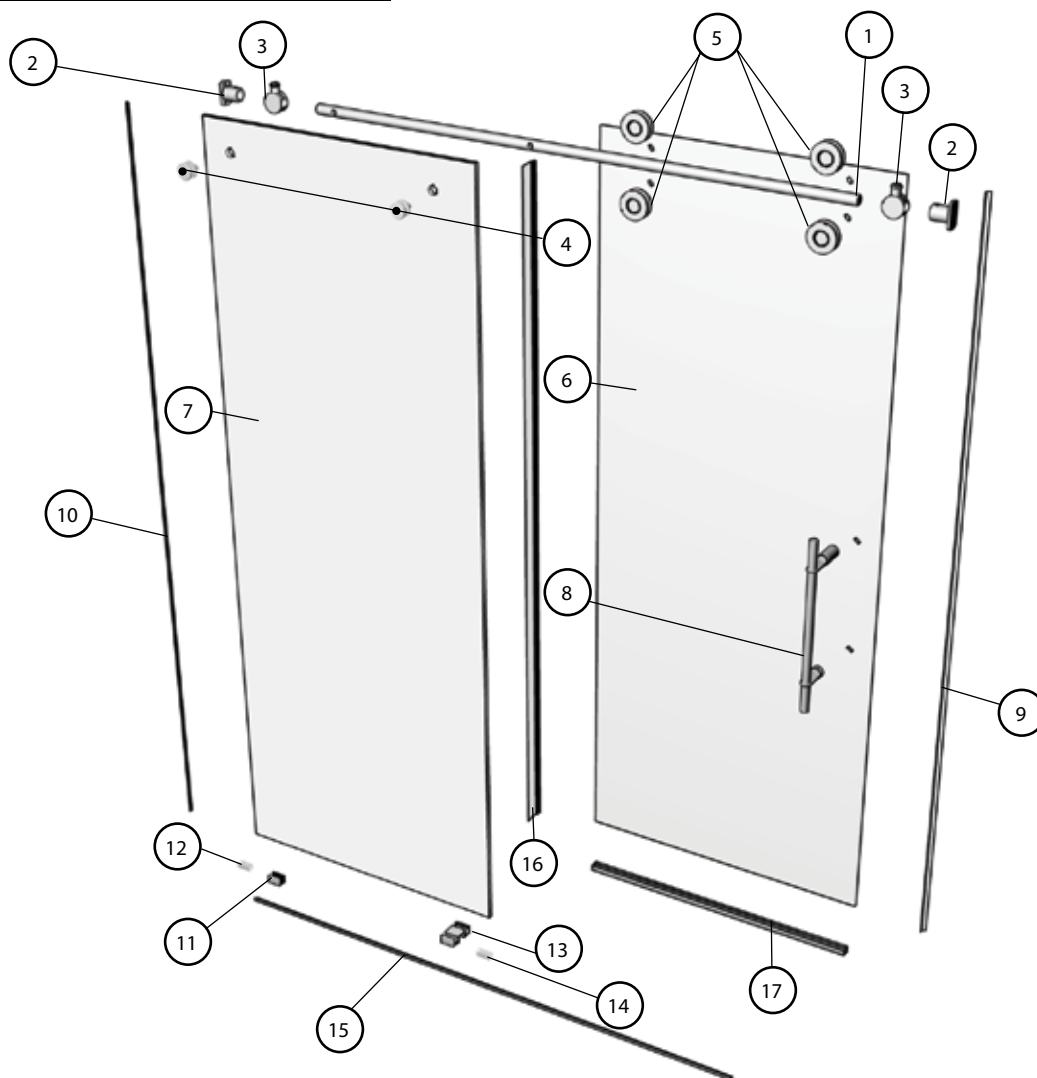
● WATERPROOFING

- *No sealant is required inside the shower.*
- *All models are equipped with transparent sealing gaskets.*
- *For models with wall jambs, if your shower door is to be installed over ceramic tiles, the tiles should lay completely under the wall jambs.*

● MAINTENANCE

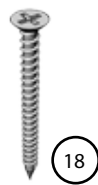
- *Never use scouring powder pads or sharp instruments on metal pieces or glass panels.*
- *An occasional wiping down with a mild soap diluted in water is all that is needed to keep the panels and aluminum parts looking new.*
- *We recommend wiping the glass panels with a squeegee after each use.*

PARTS LISTING



ITEM	PARTS	QTY
1	RUNNING RAIL	1
2	WALL BRACKET	2
3	STOPPERS	2
4	GLASS HOLDERS	2
5	TWIN ROLLERS	2 PAIRS
6	SLIDING DOOR PANEL	1
7	FIXED PANEL	1
8	HANDLE	1
9	GASKET (DOOR)	1
10	GASKET (FIXED PANEL)	1
11	BOTTOM GLASS CLIP	1
12	GASKET (GLASS CLIP)	2
13	BOTTOM GUIDE	1
14	GASKET (BOTTOM GUIDE)	1
15	THRESHOLD	1
16	DOOR PANEL SIDE GASKET	1
17	DOOR PANEL BOTTOM GASKET	1

HARDWARE



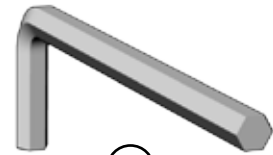
18



19



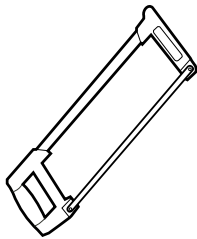
20



21

ITEM	HARDWARE	QTY
18	#12-3 SELF-THREADING SCREW	4
19	#6-1 SELF-THREADING SCREW	2
20	HEX KEY 5mm	1
21	HEX KEY 6mm (7/32")	1

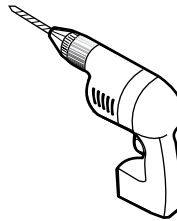
TOOLS



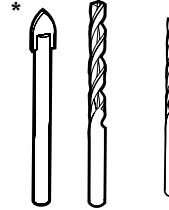
HACKSAW



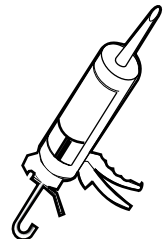
SCREWDRIVERS



DRILL

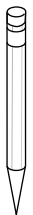


1/4" & 1/8" DRILL BITS

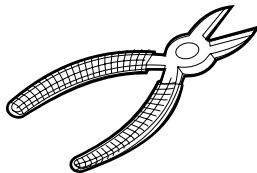


SILICONE

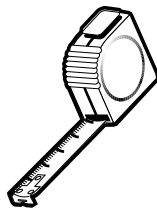
If the shower panels are to be assembled on ceramic tiles, use a 1/4" drill bit for ceramic tiles.



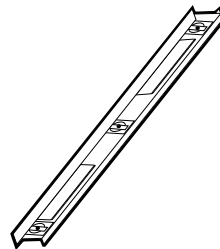
PENCIL



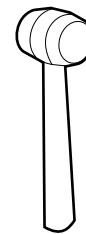
CUTTING PLIER



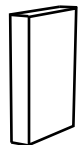
TAPE MEASURE



LEVEL



MALLET

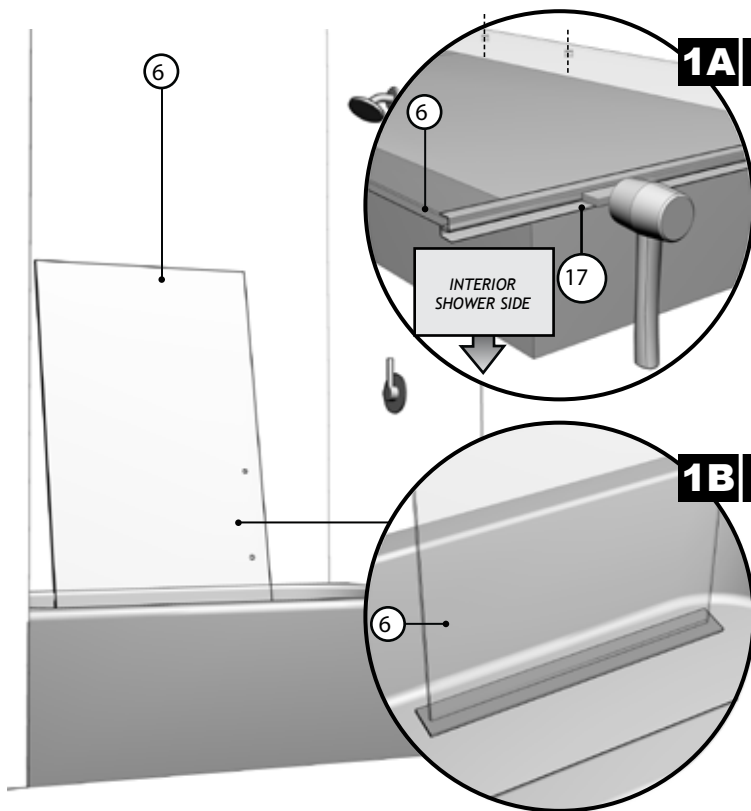


BLOCK

1 GASKET INSTALLATION

1A

Using the cardboard packaging box as platform, install bottom door gasket (17) onto door panel (6) using a block and a mallet. Notice the gasket orientation.

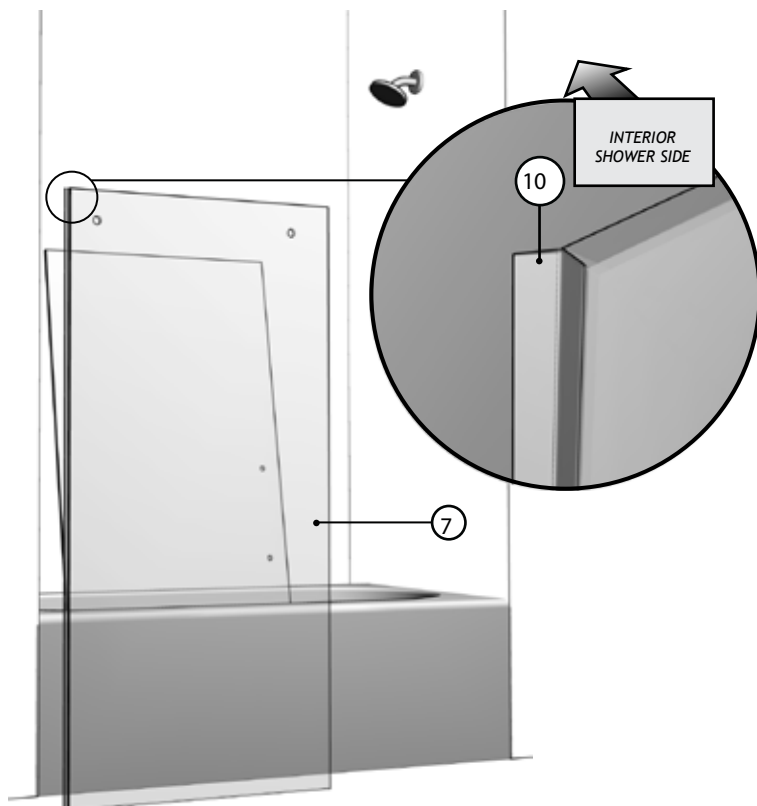


1B

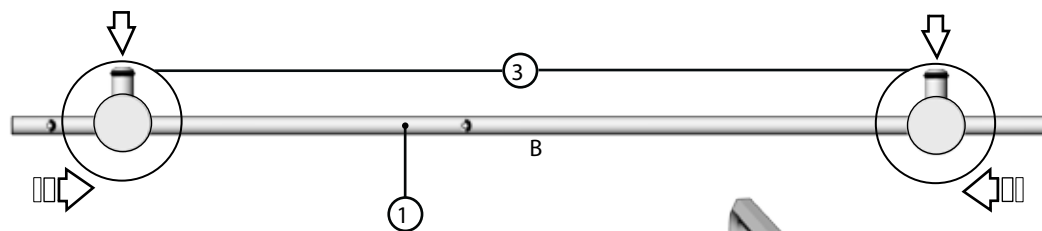
Place door panel (6) inside tub to simplify following installation procedures. Ensure placing the panel onto a cushioned surface, such as a towel or cardboard, to prevent damage either to the panel or the tub.

1C

Thoroughly clean the edge of the fixed panel (7). Split the door gasket (9) in two and apply the smaller half of the gasket to the edge of the fixed panel.

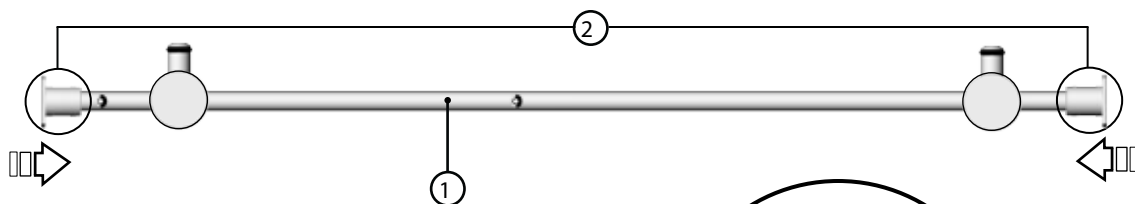
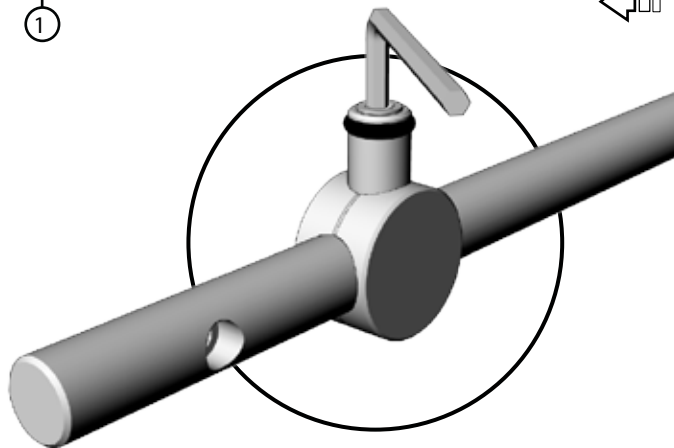


2 RUNNING RAIL



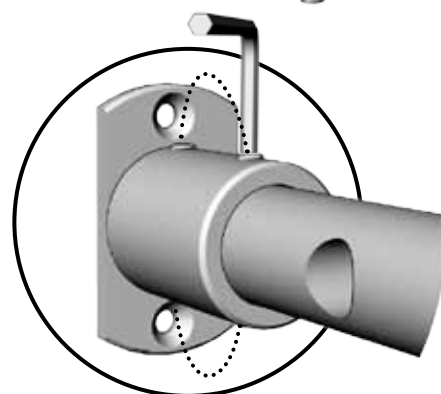
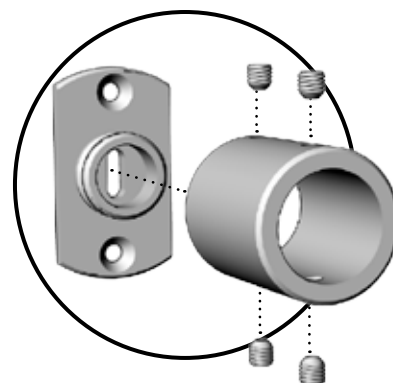
2A

Position the stoppers (3) on the running rail (1) as illustrated. Secure them temporarily in place.



2B

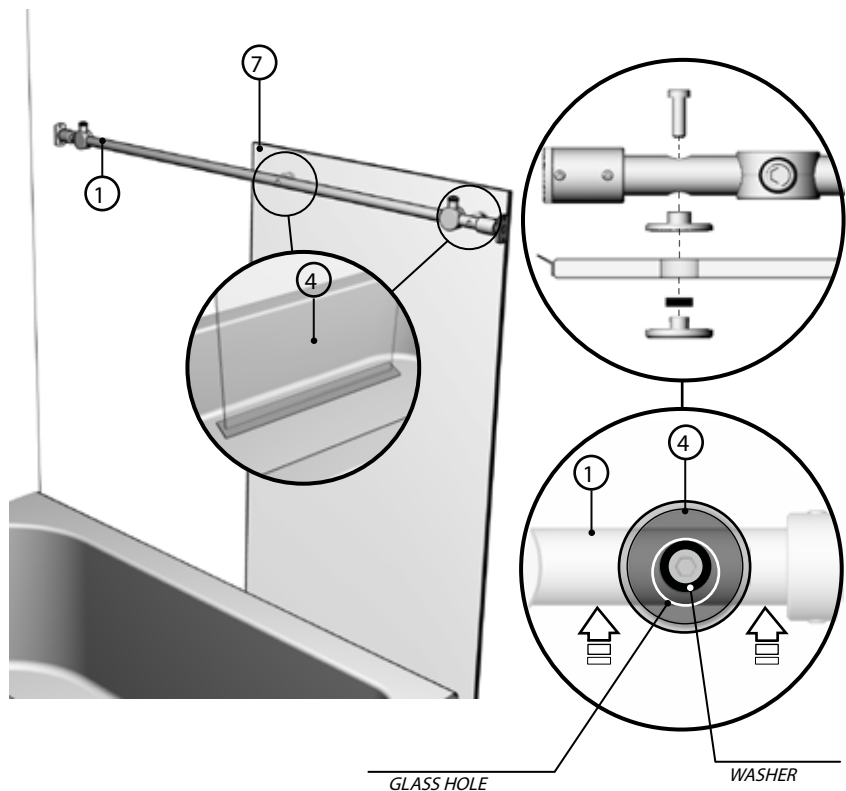
Position the wall brackets (2) on the running rail (1) as illustrated. Secure them temporarily in place.



3 GLASS HOLDERS

Fasten the running rail (1) to the fixed panel (7) with the glass holders (4). Secure them temporarily in place.

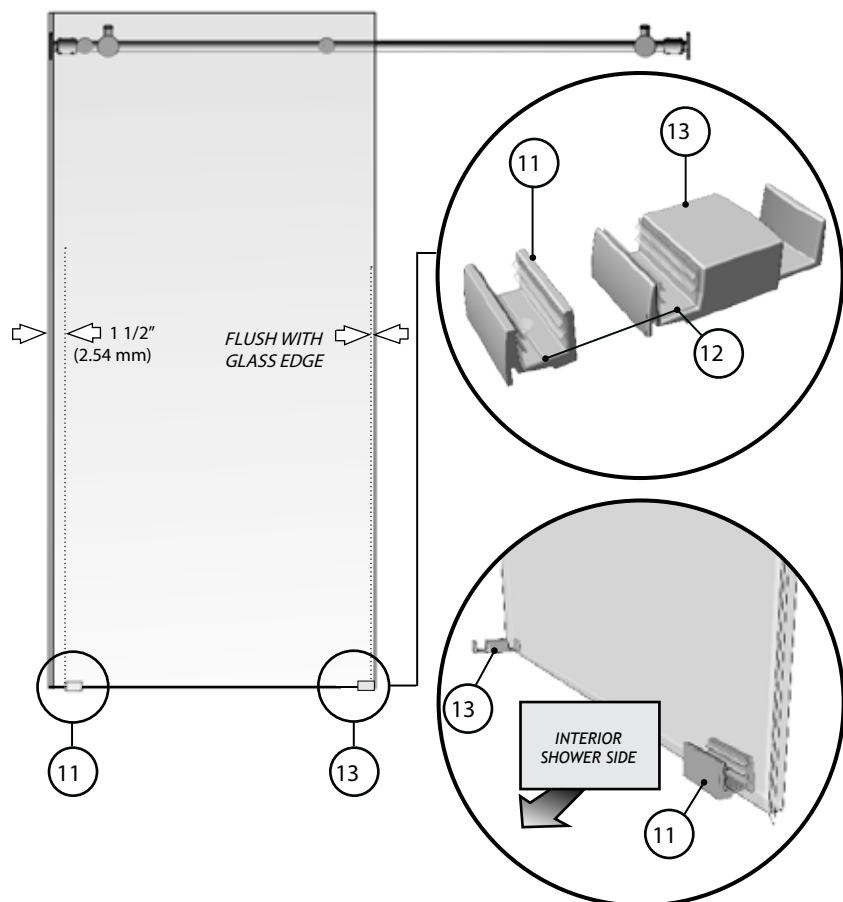
Ensure that the running rail (1) is at the highest possible position in reference to the holes of the fixed panel (7).



4 GLASS CLIPS

Insert bottom gaskets (12) in the bottom glass clips (11) and (13).

Position glass clips (11) (13) onto the fixed panel (7) as shown.

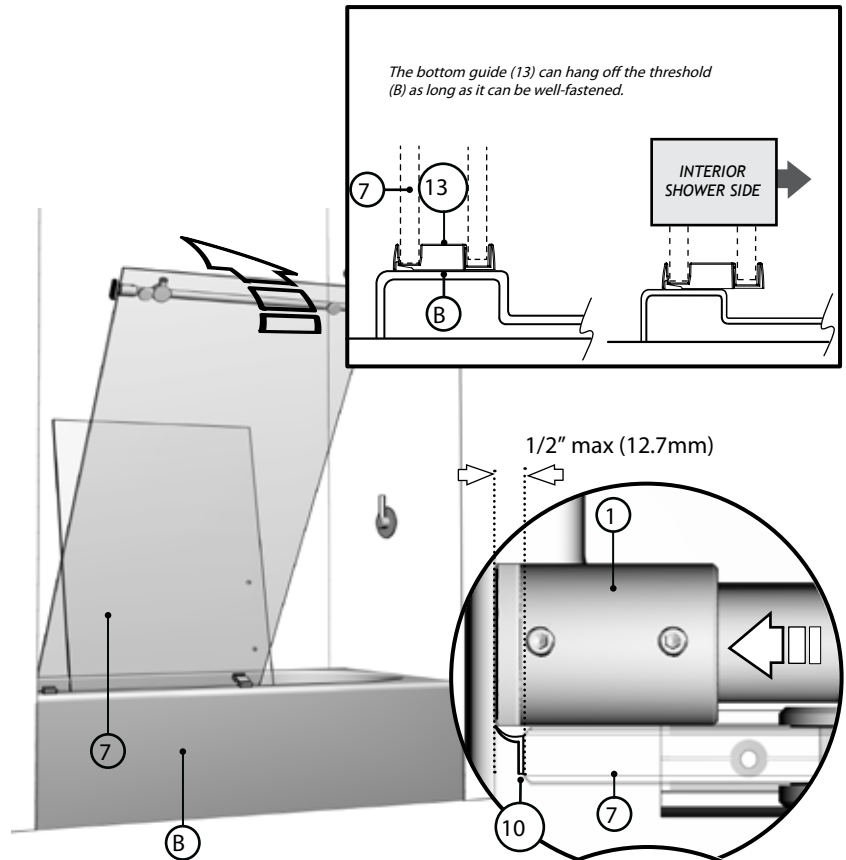


5 FIXED PANEL

5A

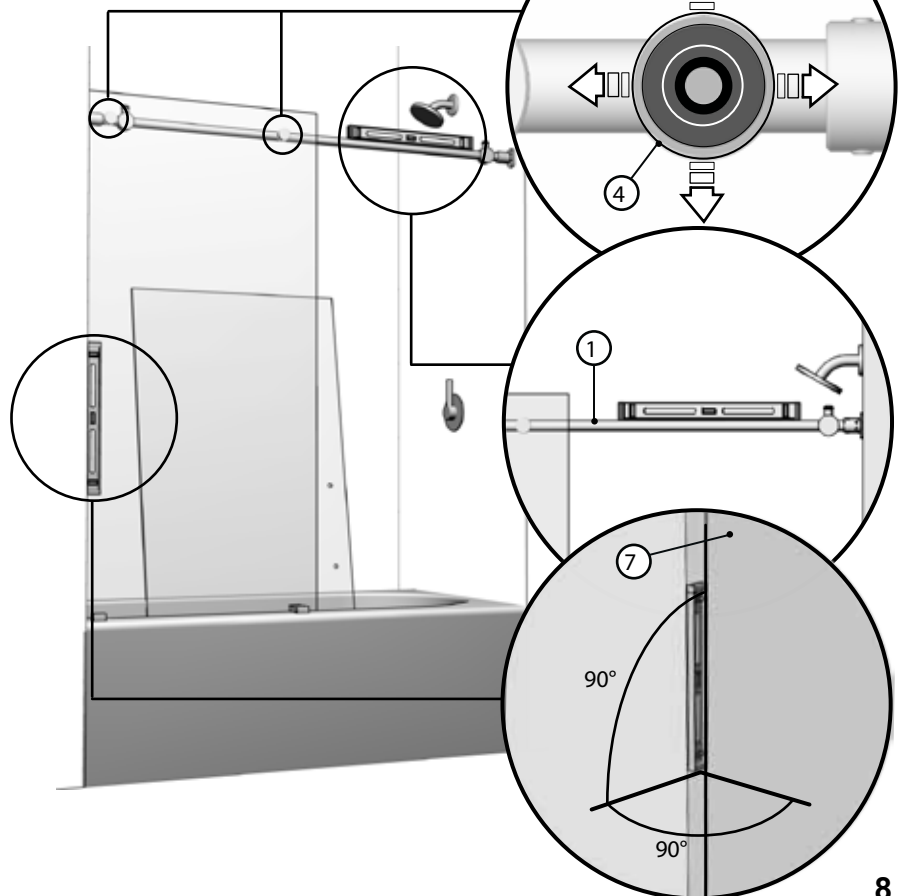
Position the fixed panel assembly (7) on threshold of tub (B) as shown.

Adjust the fixed panel (7), by way of the running rail (1), so as to force the gasket (10) against the wall.



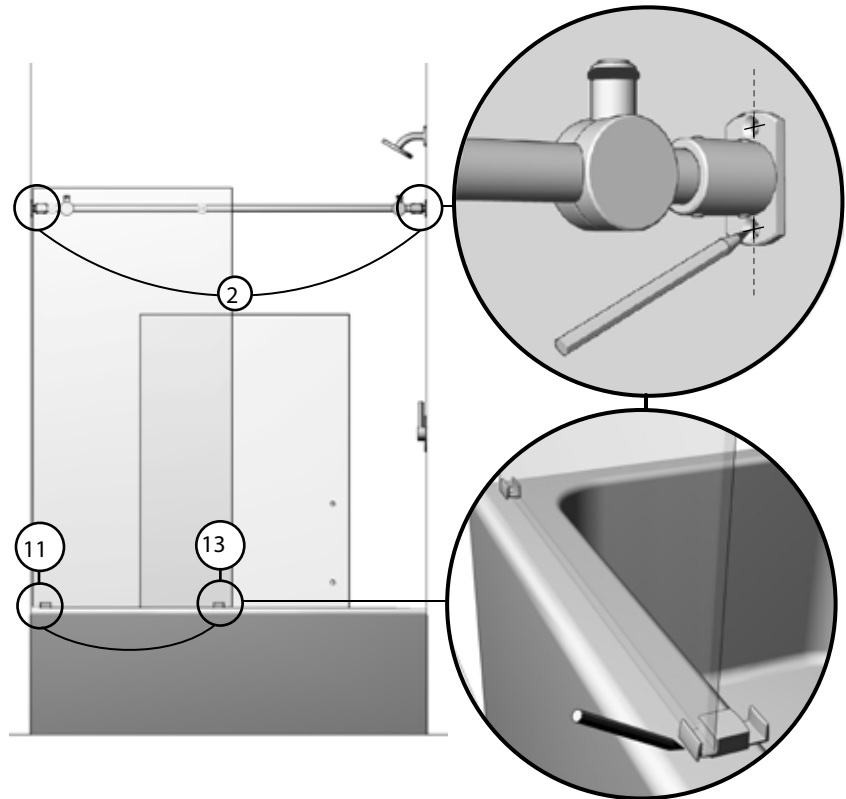
5B

Ensure that the running rail is level and that the fixed panel is square. If a horizontal correction is required, adjust and level the glass fasteners (4).



5C

Mark the screw locations for the wall brackets (2) on the walls on both sides of shower as well as the placement of the bottom glass clips (11) (13).



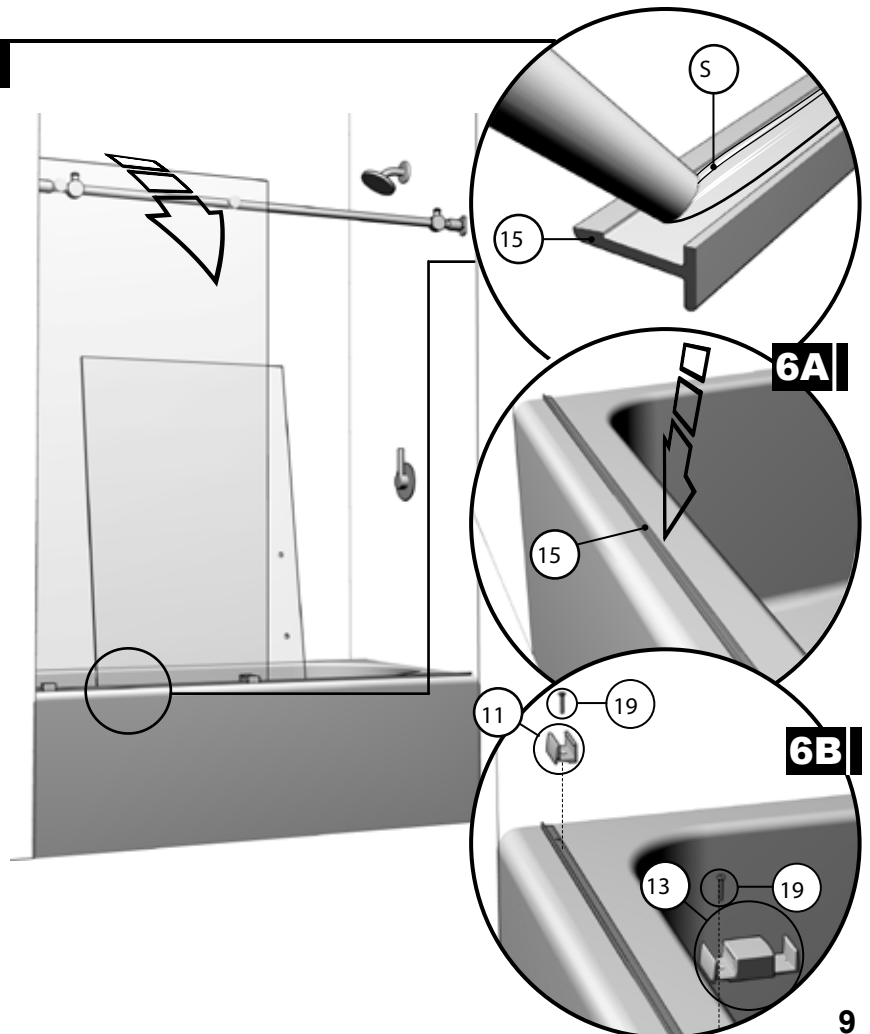
6 THRESHOLD

6A

Remove the fixed panel assembly so as to allow placement of the threshold (15) onto the base. Ensure that a bead of silicone (S) is applied to the underside of the threshold before installing.

6B

Secure glass clips (11) (13) with self-drilling screws (19).

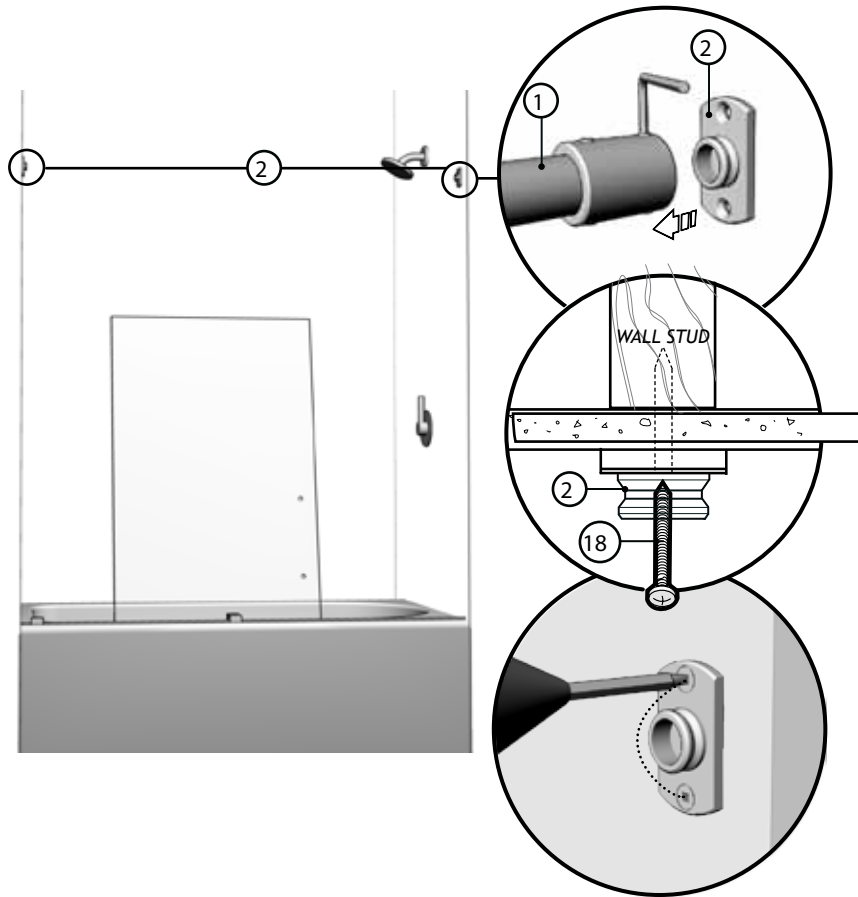


7 WALL BRACKETS

7A

Mark the screw locations on the walls on both sides of shower. Remove the running rail (1) from the wall brackets (2). Drill holes in walls until wall stud is reached with a drill bit intended for ceramic tiles.

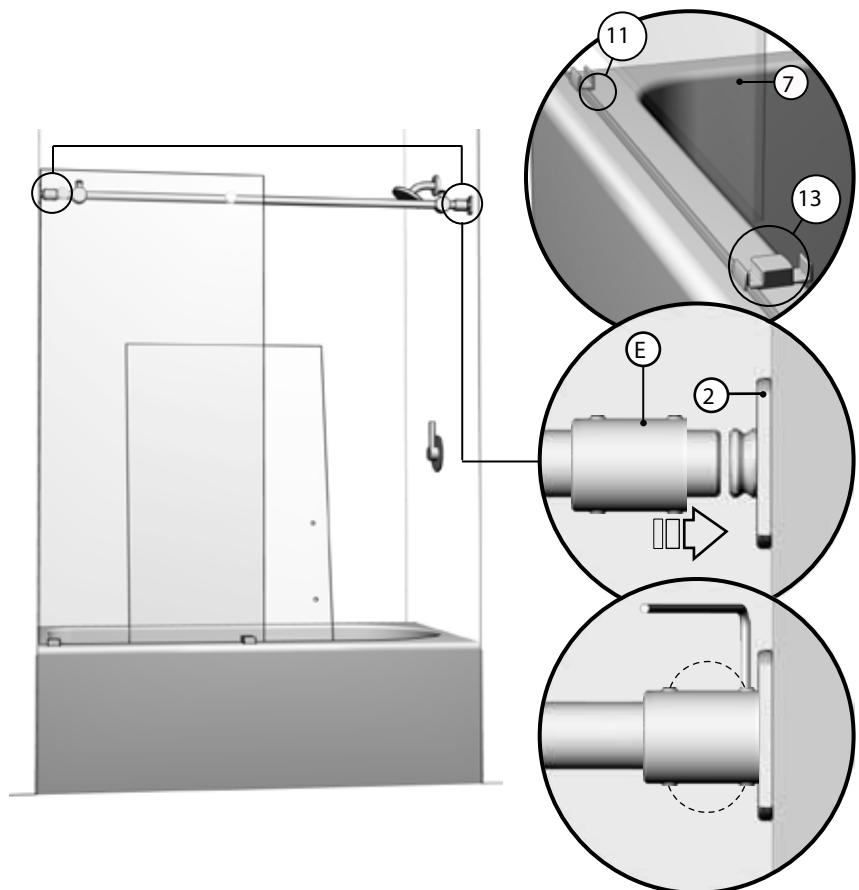
Fasten the wall brackets (2) with #12-3 screws (18).



7B

Insert fixed panel (7) back, ensuring that it's placed in the bottom glass clips (11) (13).

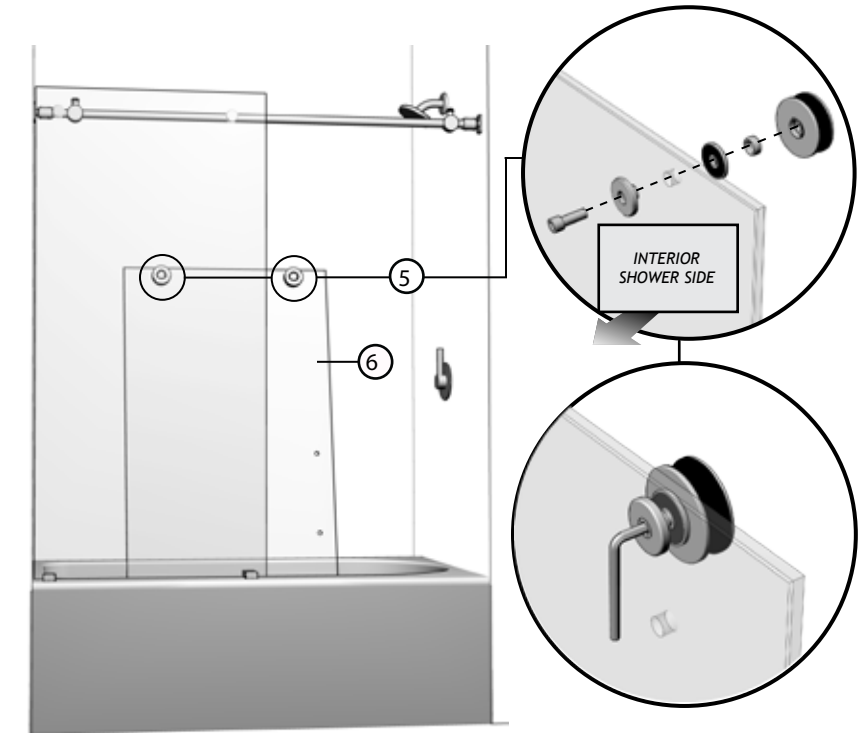
Slide expander (E) over wall bracket (2) and fasten set screws



8 SLIDING DOOR

8A

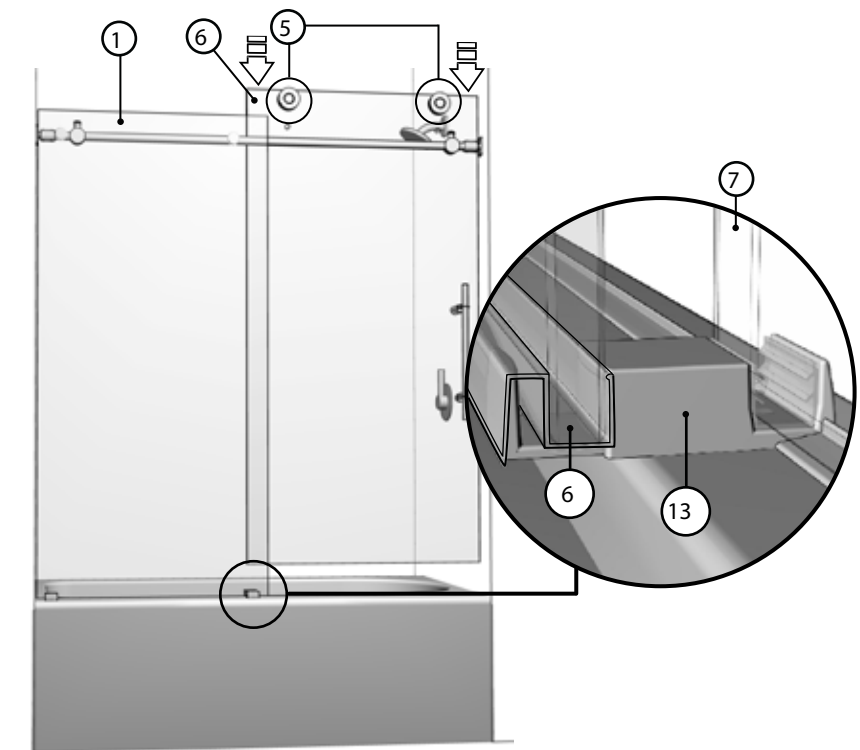
Assemble the 2 top rollers (5) to the door panel (6) as illustrated.



8B

Install sliding door (6) ensuring that rollers (5) are fixed over the running rail (1).

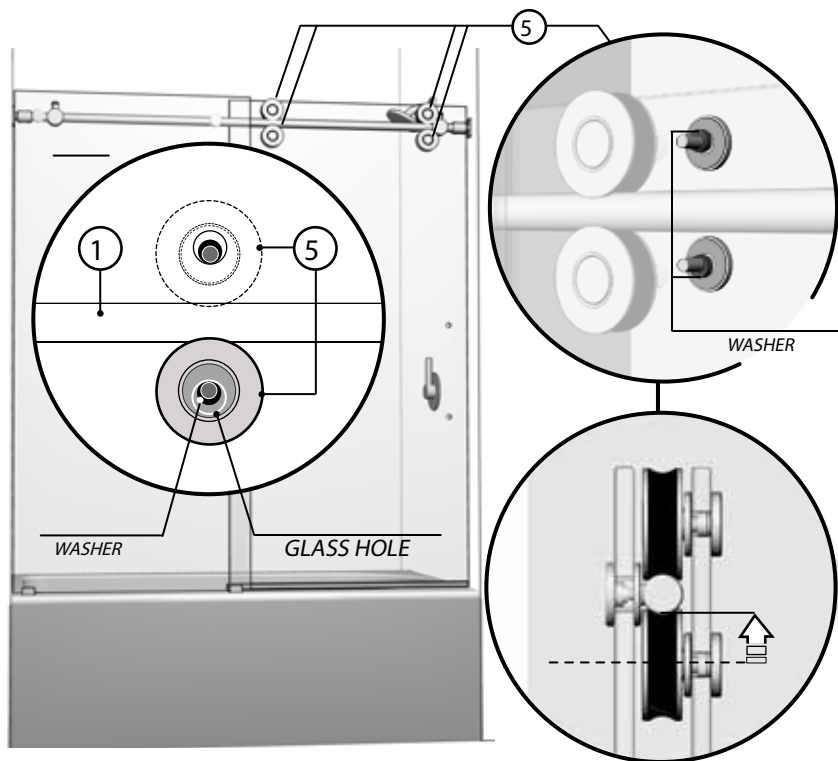
Ensure that sliding door (6) is placed within the bottom guide (13).



8C

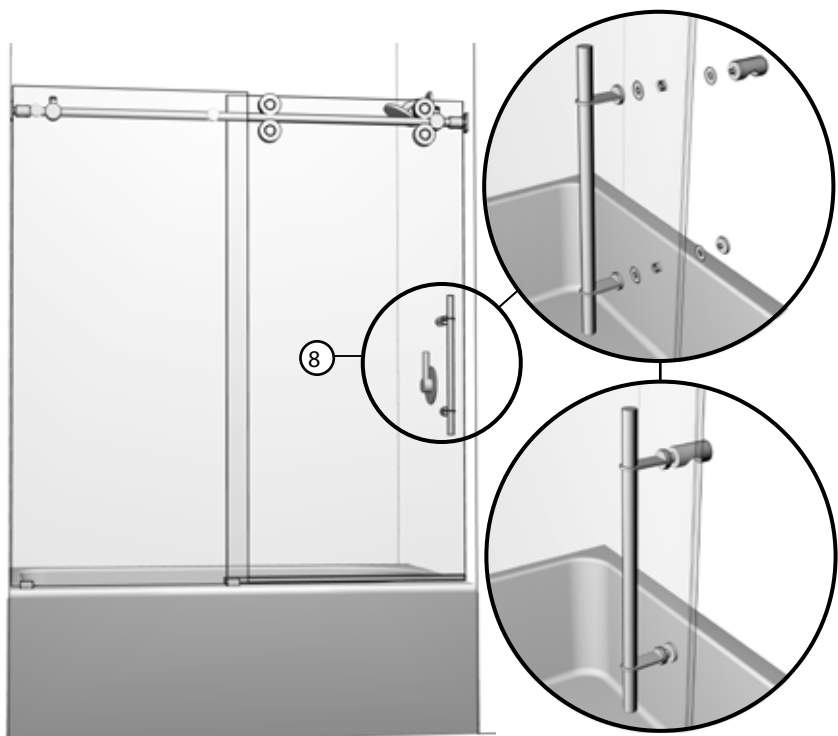
Install bottom rollers, making sure that they are tangent to the running rail (1).

Through the use of the nonconcentric washers, adjust rollers so that the sliding door panel is parallel to the running rail.



9 STRAIGHT HANDLE

Install straight handle (8) onto sliding door (6). Ensure that clear washers on either side of glass are installed.



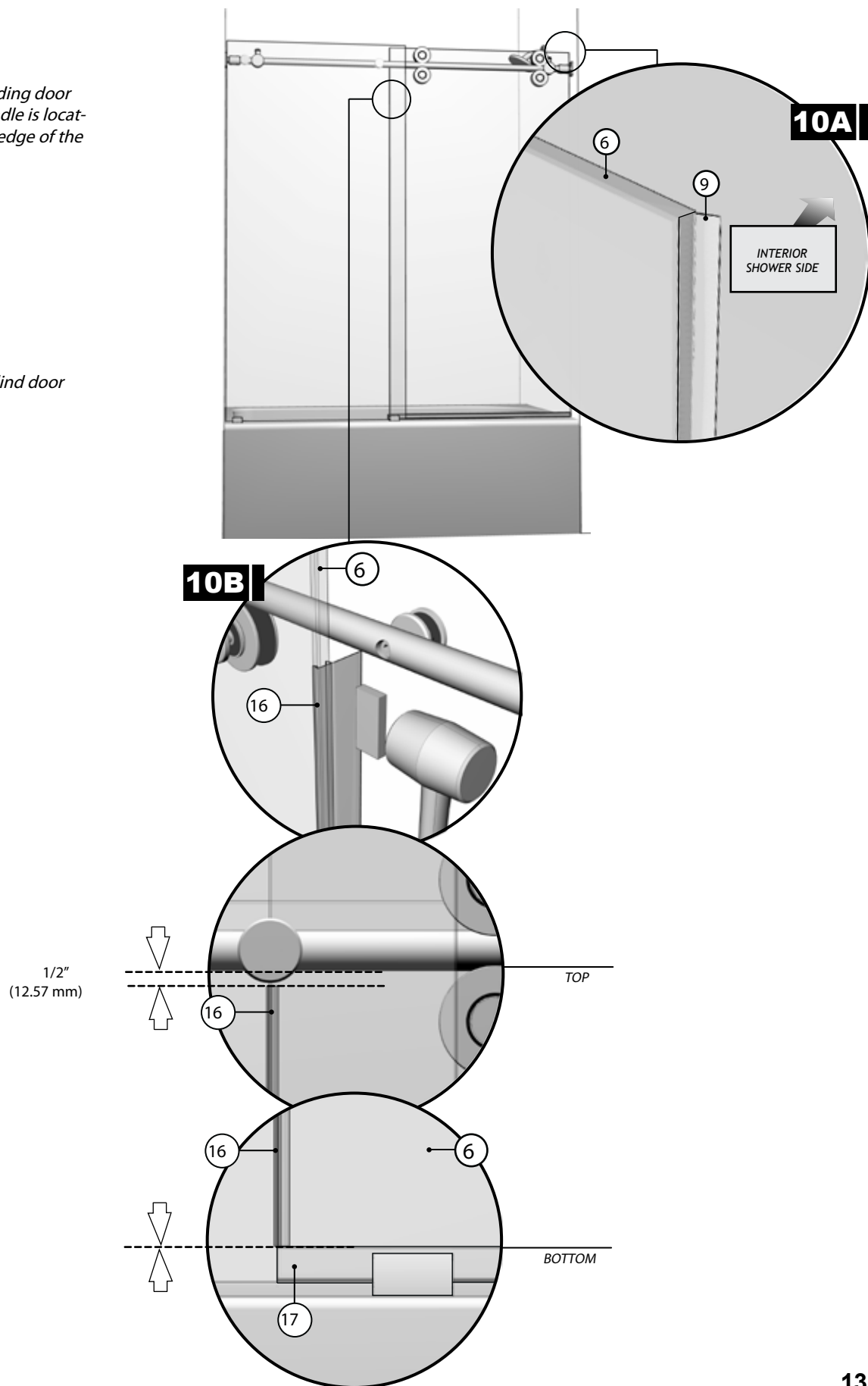
10 GASKET INSTALLATION

10A

Thoroughly clean the edge of the sliding door (6), closest to the side where the handle is located. Apply the door gasket (9) to this edge of the sliding door.

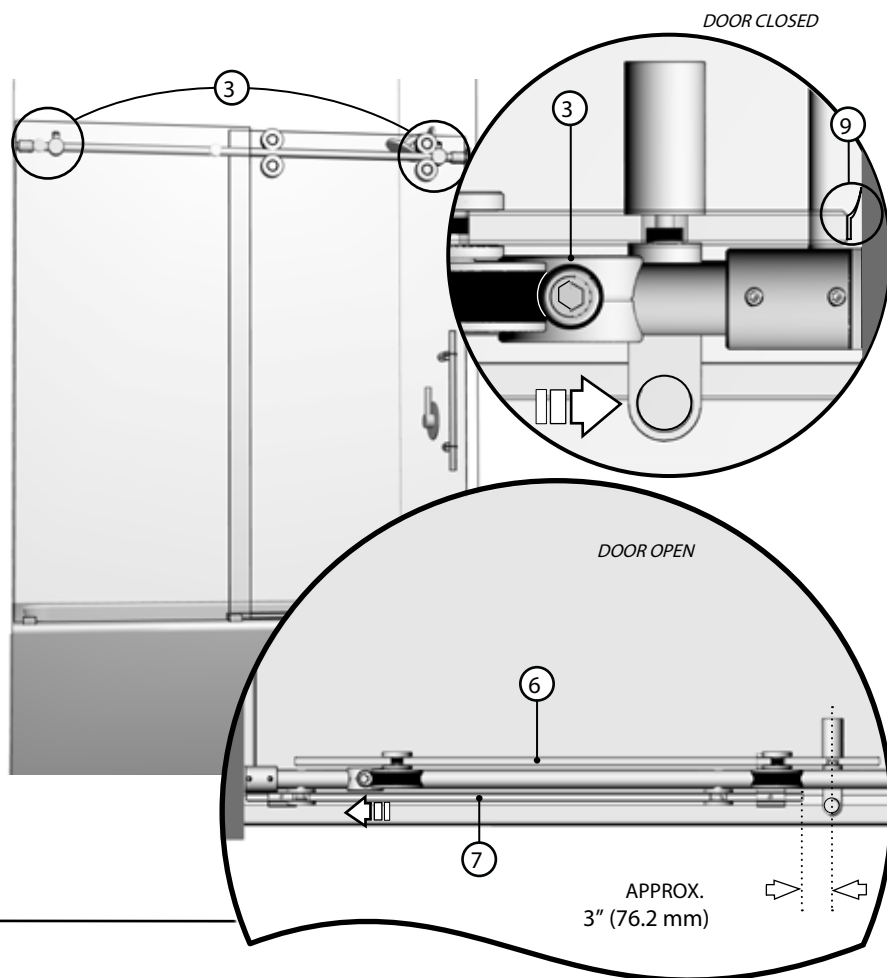
10B

Install door side gasket (16) onto sliding door panel (6).



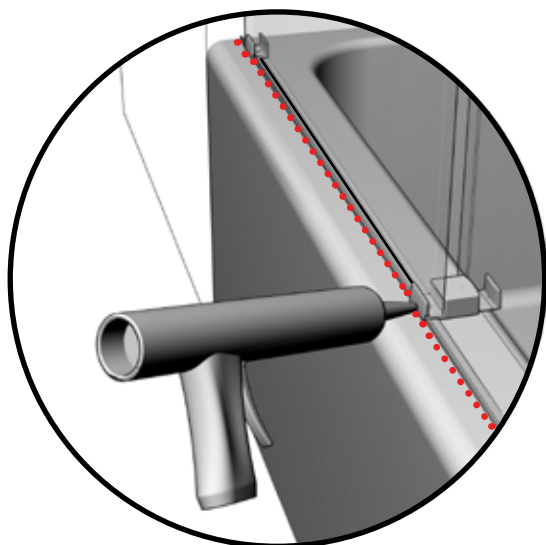
11 STOPPERS

Adjust the position of the stoppers (3) so as to ensure a maximum opening and closing range. Ensure that the sliding door gasket (9) is forced against the wall.



12 SILICONE

Apply silicone between the bottom of the fixed panel and the threshold of the base. Silicone application along the length of the threshold is also suggested. In both cases, it is done from the outside of the shower area.



24 HOURS