

PDR2W-4836-CW
PDR2W-6036-CW
PDR2W-6042-CW



OWNER'S MANUAL

SHOWER ENCLOSURES



2 PEOPLE REQUIRED



**IT IS MANDATORY TO HAVE A WALL STUD TO
SECURELY FASTEN THE RUNNING RAIL TO THE WALL**

P004

TABLE OF CONTENTS

PARTS LISTING	3
PARTS TABLE	4
PROVIDED HARDWARE	5
REQUIRED TOOLS AND MATERIALS	5
WALL JAMB INSTALLATION	6
DOOR PANEL	7
RETURN PANEL.....	7
RETURN PANEL (CONTINUED).....	8
RETURN PANEL (CONTINUED).....	9
RUNNING RAIL	10
GLASS HOLDERS	11
GLASS CLIPS.....	11
FIXED PANEL.....	12
FIXED PANEL (CONTINUED).....	13
THRESHOLD	13
FIXED PANEL.....	14
FIXED PANEL (CONTINUED).....	15
DOOR PANEL	16
DOOR PANEL (CONTINUED)	17
STRAIGHT HANDLE	17
DOOR PANEL SIDE GASKET	18
STOPPERS.....	19
SILICONE.....	19

GENERAL INSTRUCTIONS

- Read this manual carefully and completely before proceeding.
- Product specifications are subject to change without notice. Use the installation instructions supplied with the product.

● SAFETY

- *It is recommended that you wear safety glasses at all times during the installation.*
- *At all times, 2 people are required for this installation.*

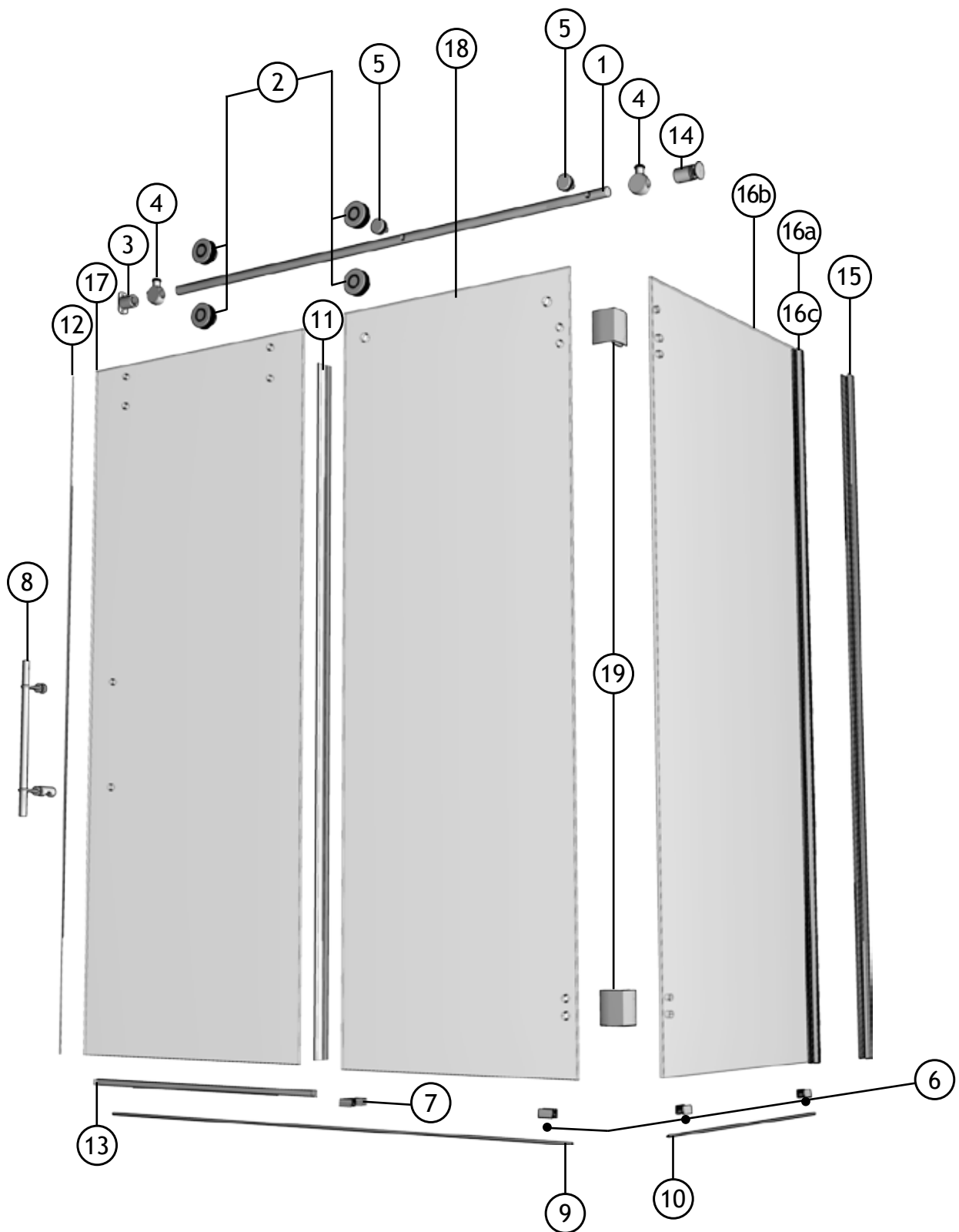
● WATERPROOFING

- *No sealant is required inside the shower.*
- *All models are equipped with transparent sealing gaskets.*
- *For models with wall jambs, if your shower door is to be installed over ceramic tiles, the tiles should lay completely under the wall jambs.*

● MAINTENANCE

- *Never use scouring powder pads or sharp instruments on metal pieces or glass panels.*
- *An occasional wiping down with a mild soap diluted in water is all that is needed to keep the panels and aluminum parts looking new.*
- *We recommend wiping the glass panels with a squeegee after each use.*

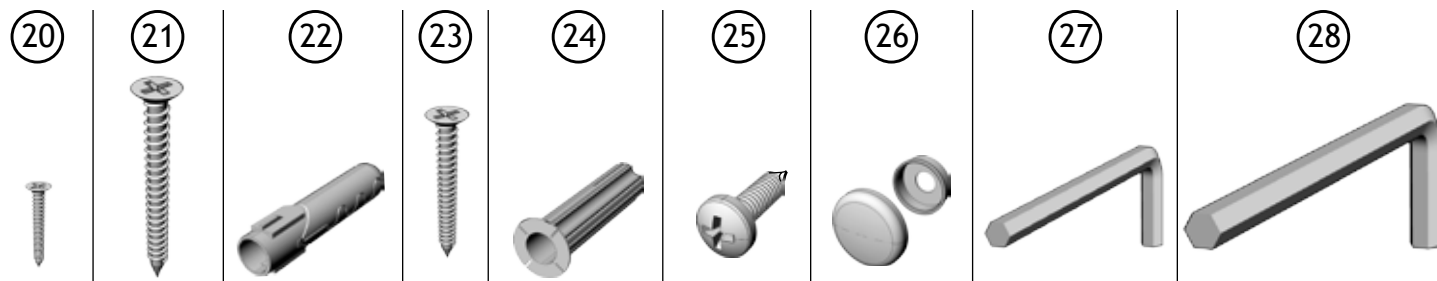
PARTS LISTING



PARTS TABLE

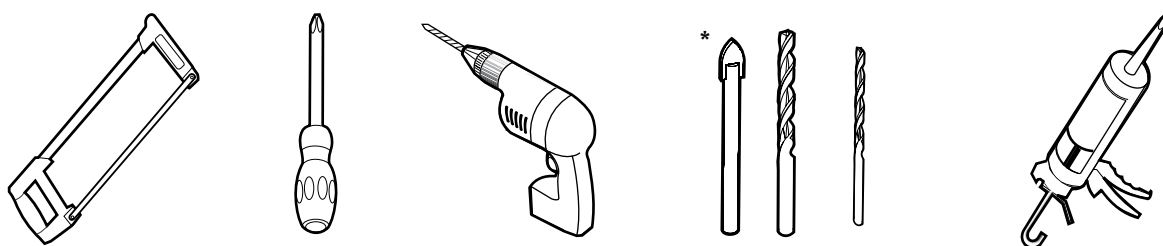
ITEM	PARTS	QTY
1	Running rail	1
2	Set of double rollers	2 sets
3	Wall bracket for running rail	1
4	Door stopper	2
5	Glass holder for fixed panel	2
6	Glass Clip for bottom of fixed panel	2
7	Bottom center guide	1
8	Straight handle	1
9	Threshold=(finished wall opening)	1
10	Threshold (return panel)	1
11	Door panel side gasket	1
12	Fixed panel gasket	1
13	Door bottom gasket	1
14	Return panel glass mount bracket	1
15	Wall jamb (Flat)	1
16a	Universal expander	1
16b	Return panel	1
16c	Gasket	1
17	Door panel	1
18	Fixed panel	1
19	90° Corner Glass Clip	2

HARDWARE



ITEM	HARDWARE	QTY
20	Self-drilling screw #6-1"	2
21	Screw #12-3"	2
22	Anchor (Blanc - White)	3
23	Self drilling screw	3
24	Wall plug (Orange)	4
25	Self drilling screw #8 - 3/8	3
26	screw cap	4
27	Hex L key 3 mm	1
28	Hex L key 6mm (7/32")	1

TOOLS



HACKSAW

SCREWDRIVERS

DRILL

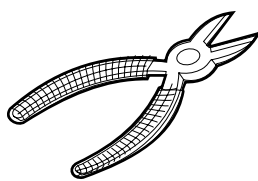
1/4" & 1/8" DRILL BITS

SILICONE

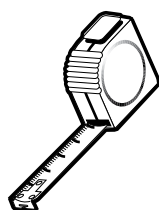
If the shower panels are to be assembled on ceramic tiles, use a 1/4" drill bit for ceramic tiles.



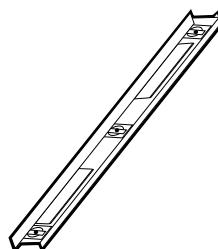
PENCIL



CUTTING PLIER



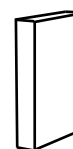
TAPE MEASURE



LEVEL

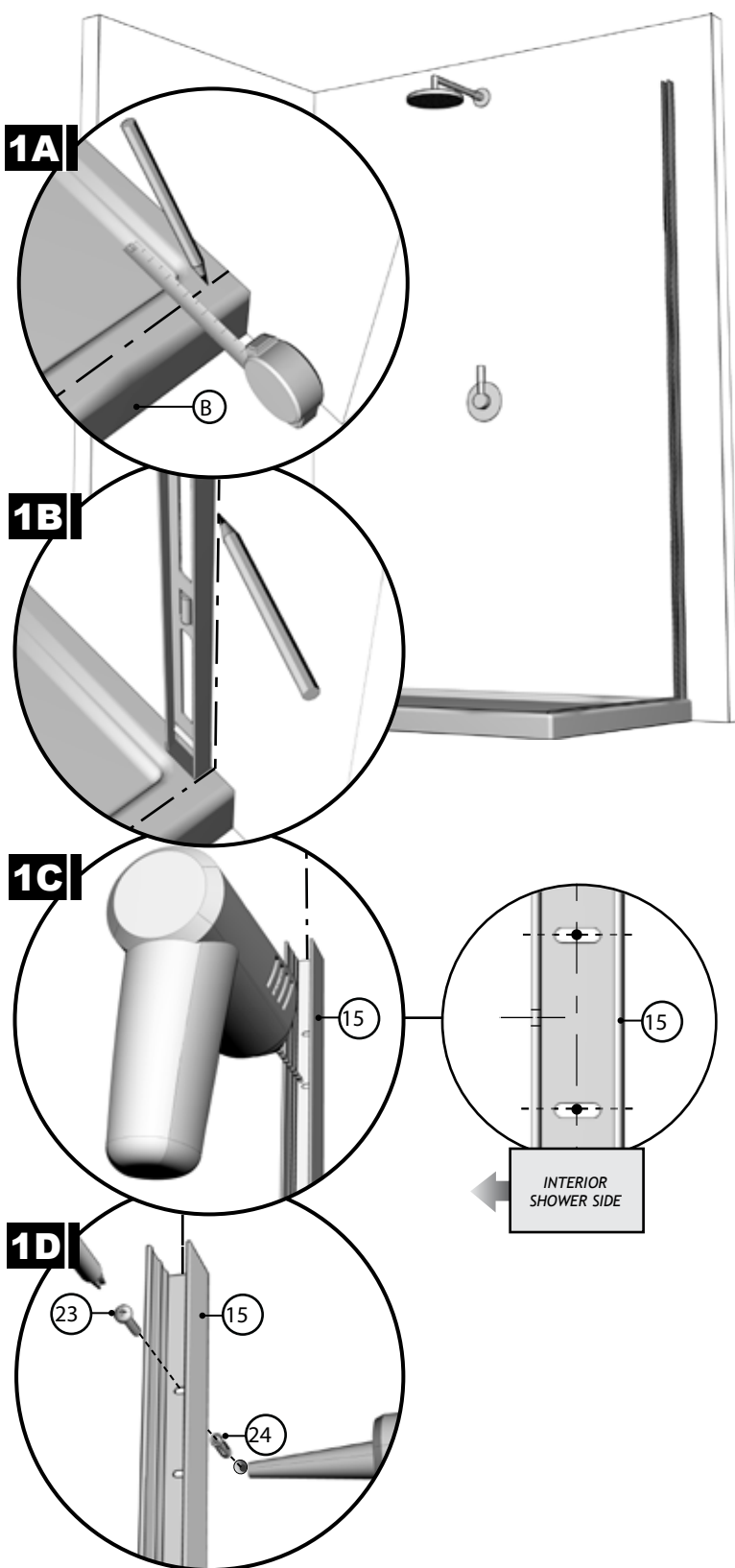


MALLET



BLOCK

1 WALL JAMB INSTALLATION



1A

Using a measuring tape, mark the center of the threshold of the base.

1B

Using the marking established in the previous step, run a second line up the wall. Use a level to ensure verticality of this line.

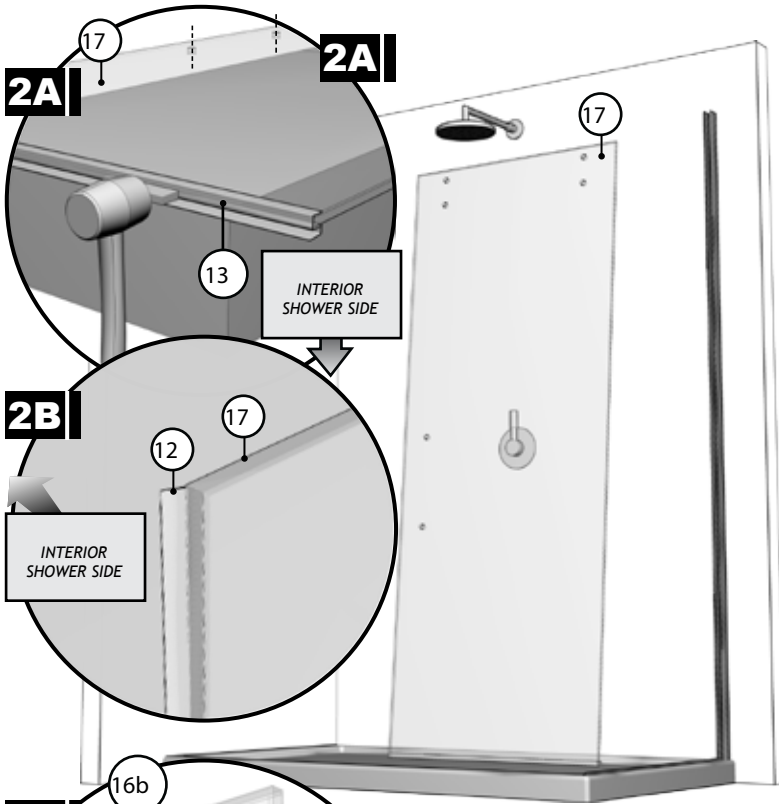
1C

Place the wall jamb onto the wall while ensuring that the wall jamb holes align themselves onto the line running up the wall. Moreover, the side holes of the wall jamb (15) should face the interior of the shower. Proceed to drilling, using a 1/8" drill bit, through the wall using the wall jamb holes as a reference.

1D

Put a drop of silicone into each hole drilled on the wall prior to insert an orange wall plug (24). Reposition and fasten the wall jamb with #8-1 1/4 Self drilling screws (23).

2 DOOR PANEL

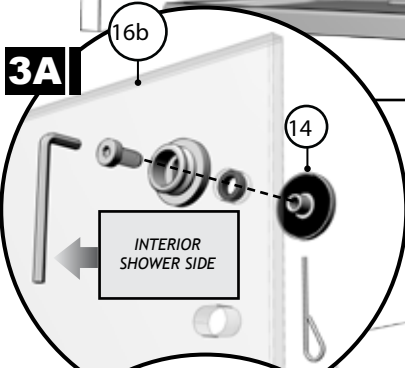


2A

Using the cardboard packaging box as platform, install bottom door gasket (13) onto door panel (17) using a block and a mallet. Notice the gasket orientation.

2B

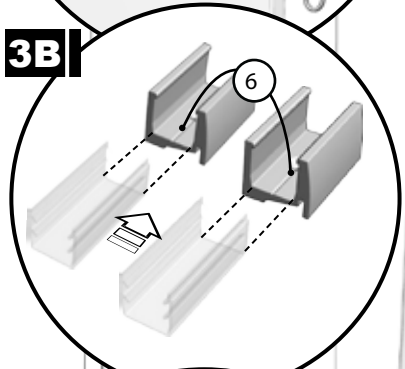
Install door side gasket (12) onto sliding door panel (17). Ensure that edge of glass is clean so as to ensure proper adhesion of the gasket.



3 RETURN PANEL

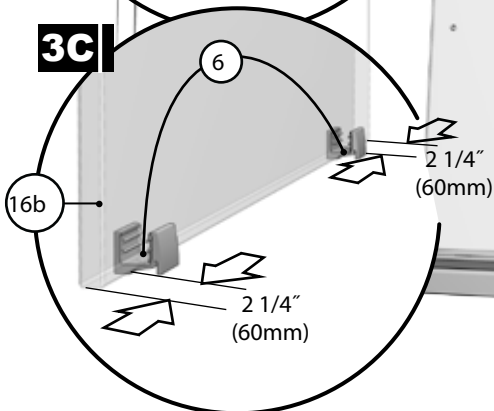
3A

Install the return panel glass mount bracket (14) to the return panel (16b) as shown.



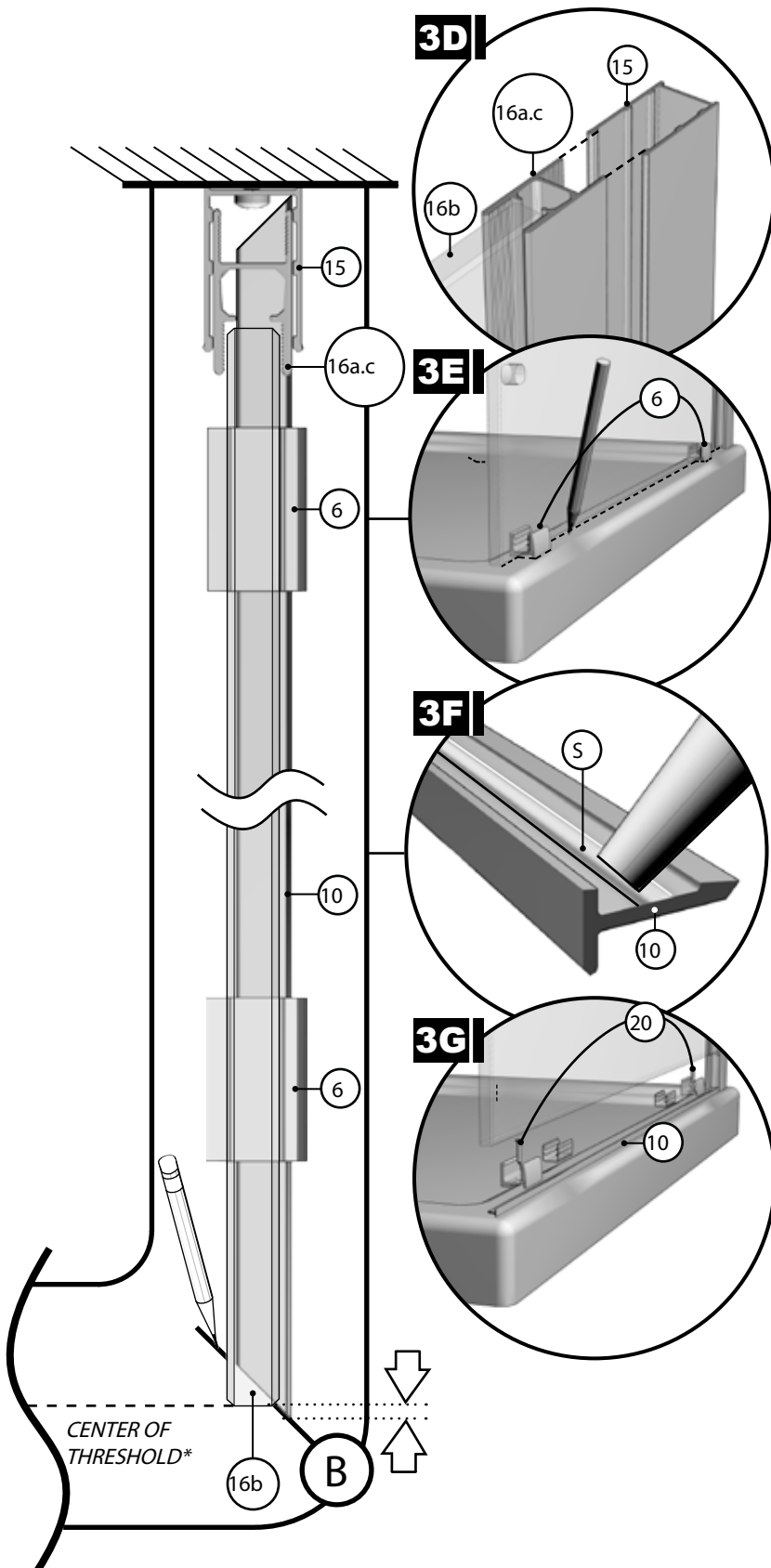
3B

Insert gaskets into the glass clips for bottom fixed panel (6).



3C

Position the glass clips for bottom of fixed panel to the return panel (16b). Note the distances illustrated.



3D

Slide the return panel assembly (16a.b.c) into the wall jamb (15) so as to allow the return panel (16b), along with the clips for bottom of fixed panel (6), to rest on the threshold of the base.

3E

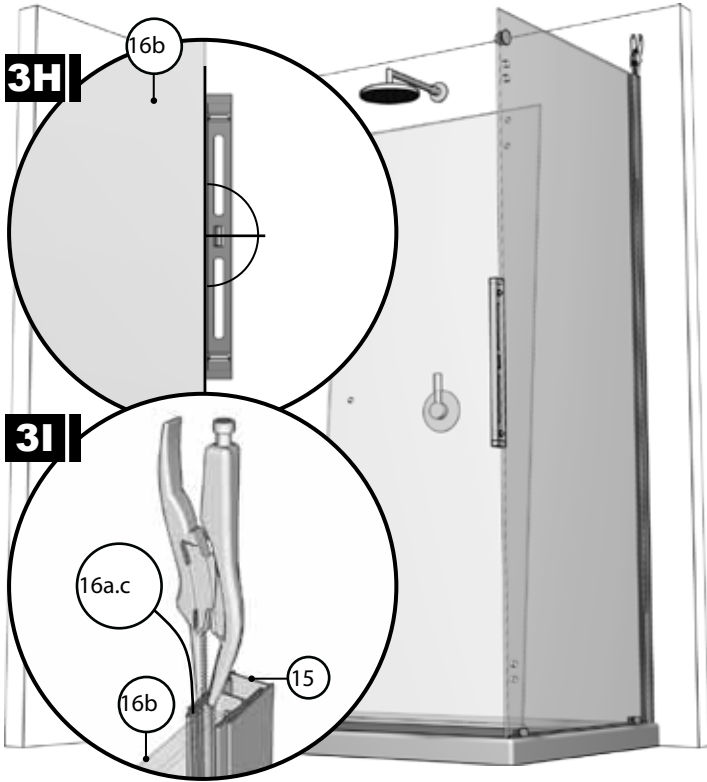
Mark the glass clips for bottom of fixed panel (6) locations on the base, ensuring that the leading edge of the return panel is tangent to the center of threshold of the base. Draw a line marking the position of return panel threshold (10) in relation to the return panel based on dimension B. Proceed to removing the return panel assembly (16a.b.c) as well as the glass clips (6).

3F

Apply a bead of silicone to the underside of the return panel threshold before proceeding to the next step.

3G

Secure glass clips for bottom of fixed panel on the base, against the threshold (10) at the markings established in step 3E. Secure these with #6-1 self-drilling screws (21) before repositioning the gaskets. Reposition the return panel assembly (16a.b.c) as established in step 3D.



3H

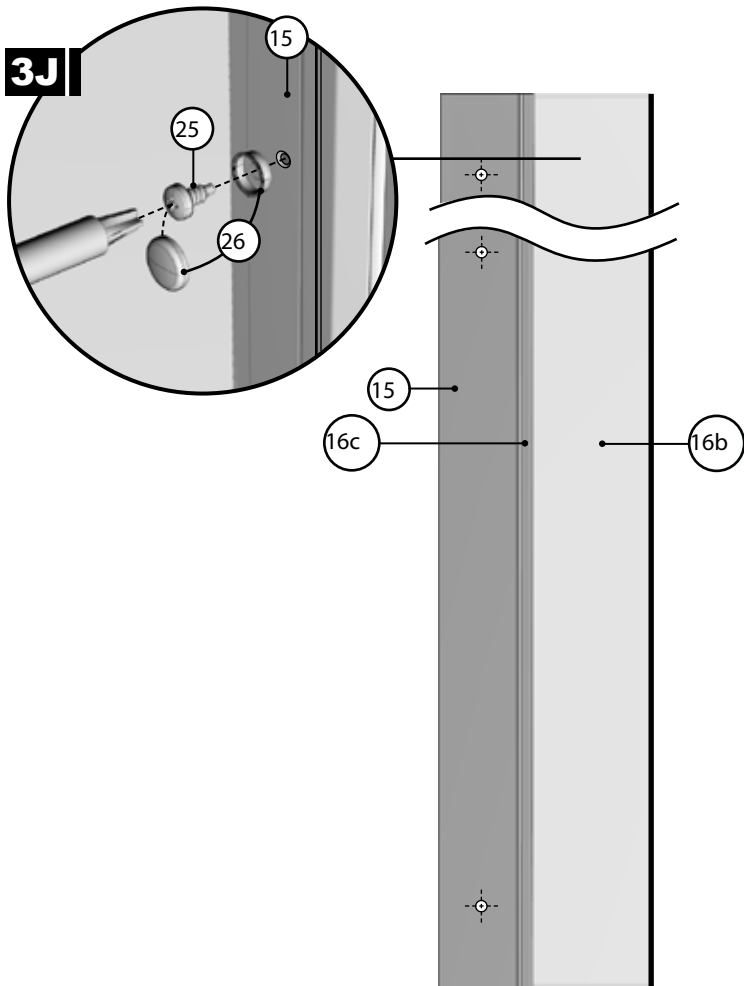
Ensure that the return panel (16b) is vertical by way of a level. If there need be a correction, adjust the verticality of the expander (16a) in relation to the wall jamb (15).

3I

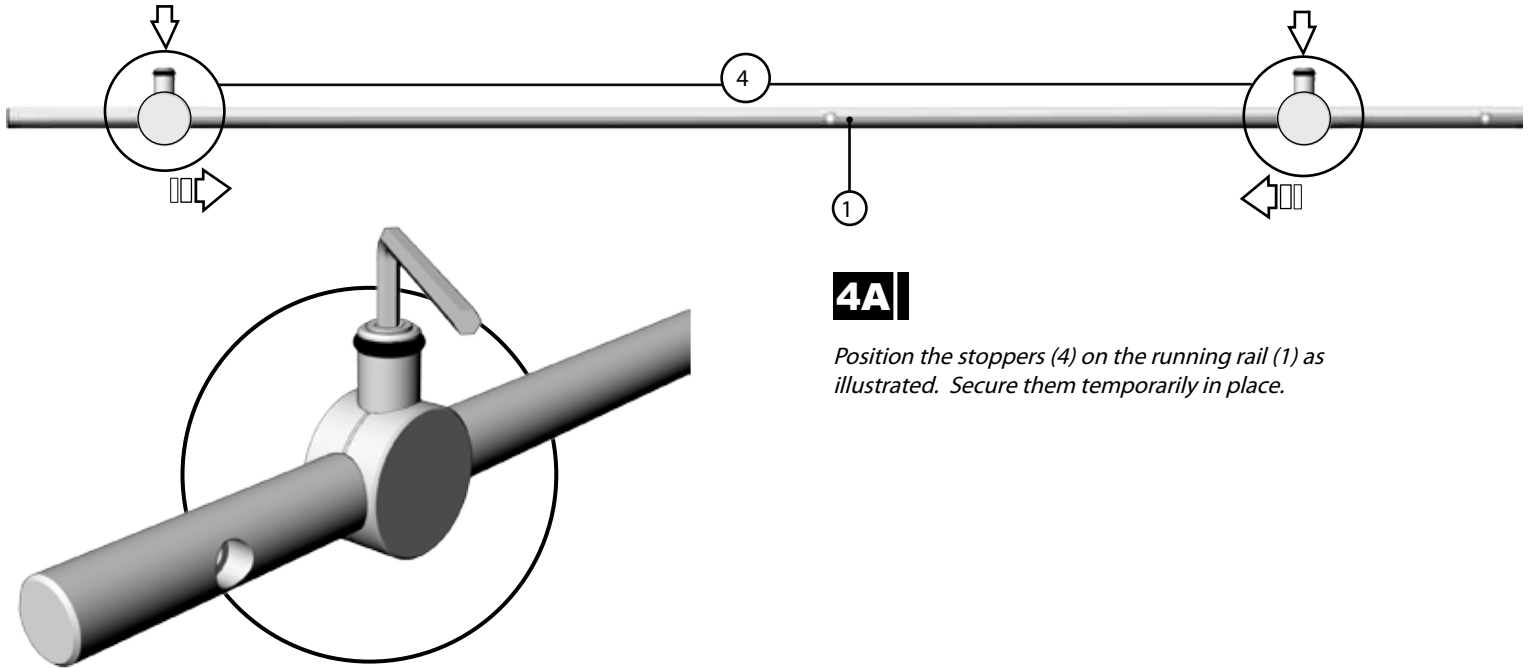
Once the return panel (16b) has been adjusted, secure the expander (16a) to the wall jamb (15) by way of a clamp so as to keep the return panel level.

3J

By way of #8- 3/8 screws (25), as well as screw caps (26), permanently secure the wall jamb (15) to the expander (16a).

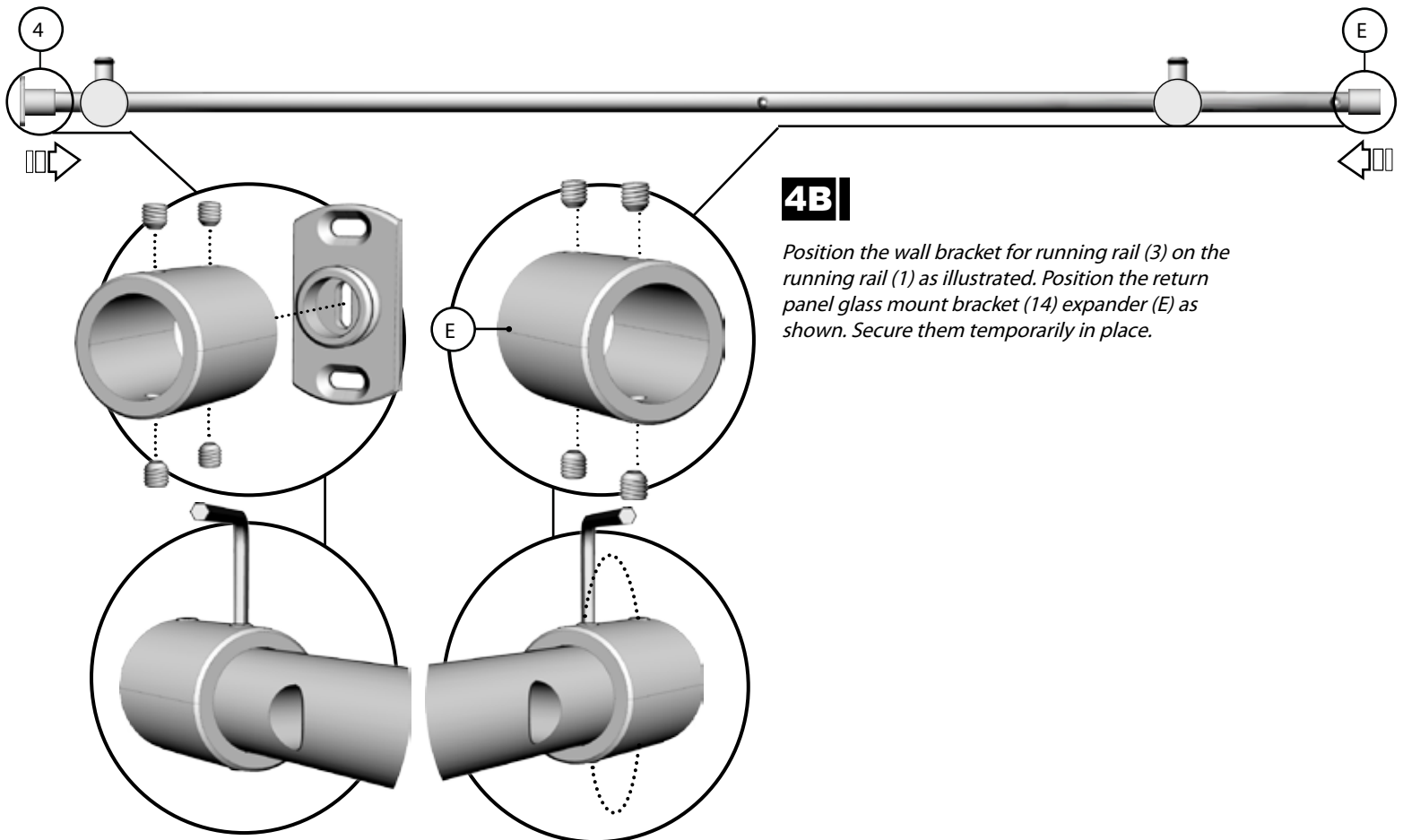


4 RUNNING RAIL



4A

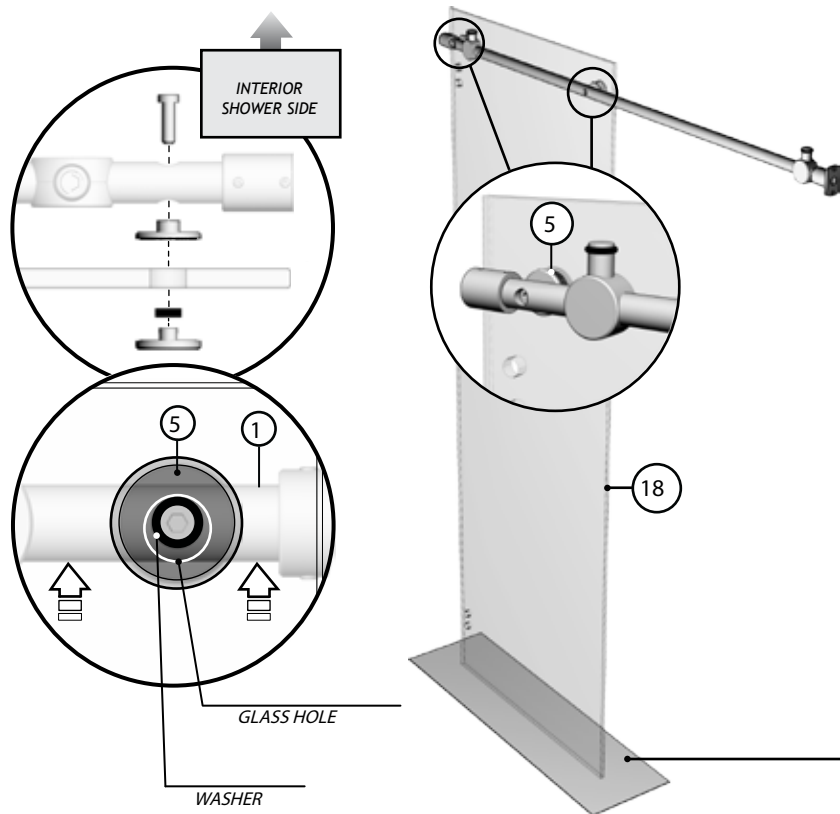
Position the stoppers (4) on the running rail (1) as illustrated. Secure them temporarily in place.



4B

Position the wall bracket for running rail (3) on the running rail (1) as illustrated. Position the return panel glass mount bracket (14) expander (E) as shown. Secure them temporarily in place.

5 | GLASS HOLDERS



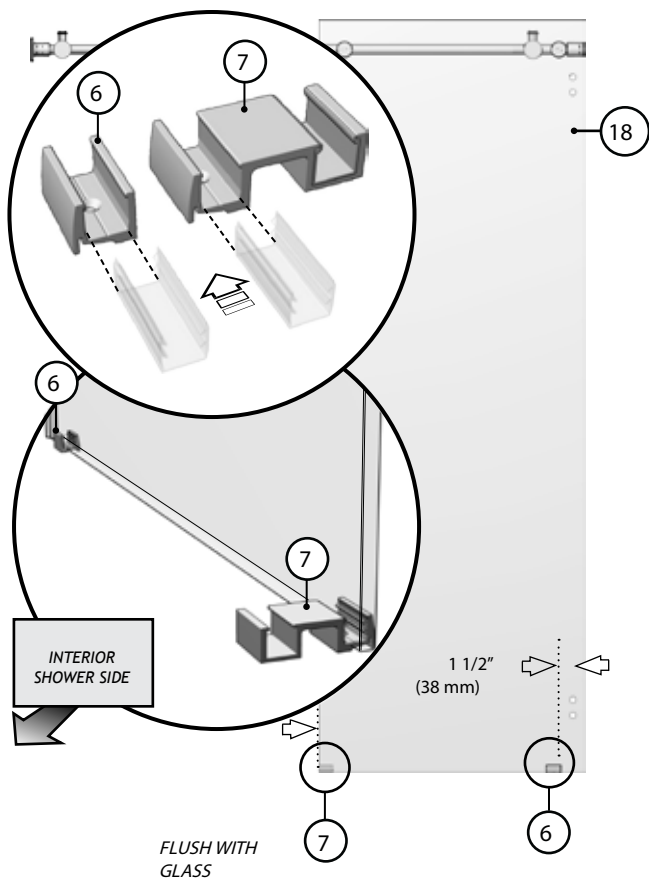
Fasten the running rail (1) to the fixed panel (18) with the glass holders (5). Secure them temporarily in place.

Ensure that the running rail (1) is at the highest possible position in reference to the holes of the fixed panel (18).

Place the glass panel onto a cushioned surface, such as a towel or cardboard so as to prevent unwanted damage.



5 | BOTTOM GLASS CLIPS

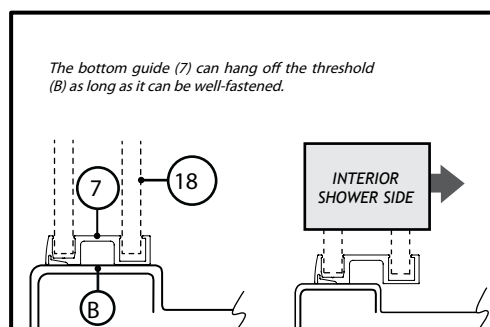
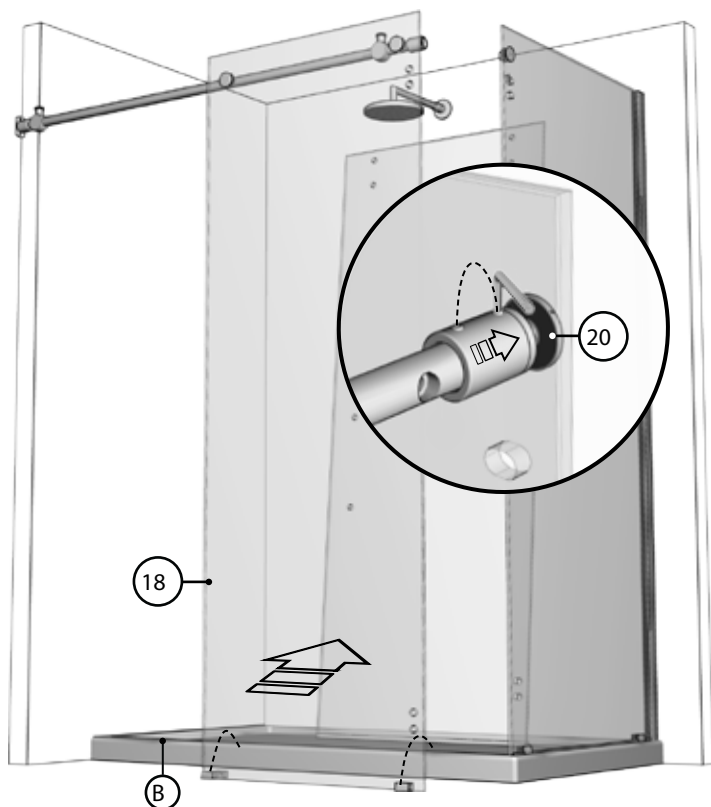


Insert gaskets in the bottom center guide (7) and glass clip for bottom of fixed panel (6).

Position the glass clip for bottom of fixed panel (6) and the bottom center guide (7) on the wide fixed panel (18) at the illustrated positions.

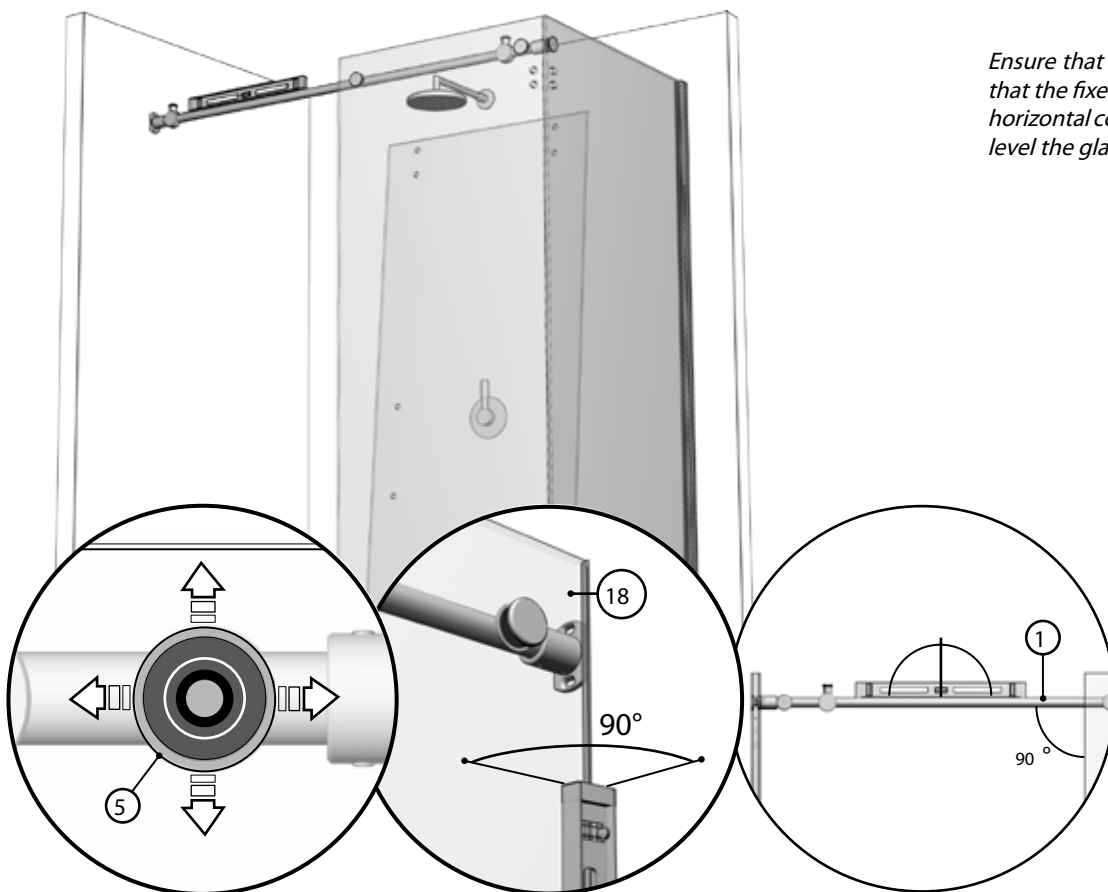
6A

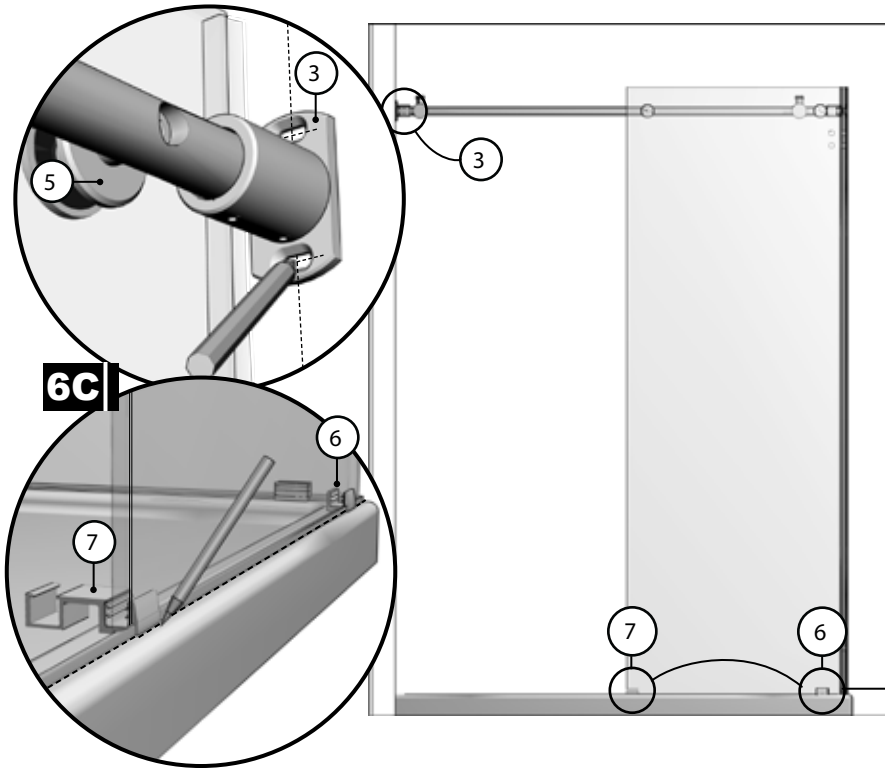
Position the fixed panel (18) on the threshold of the base (B) as shown. Adjust the wall bracket (3) as well as the return panel glass mount bracket (14) so as to ensure that the running rail (1) is secured.



6B

Ensure that the running rail (1) is level and that the fixed panel (18) is square. If a horizontal correction is required, adjust and level the glass holders for fixed panel (5).

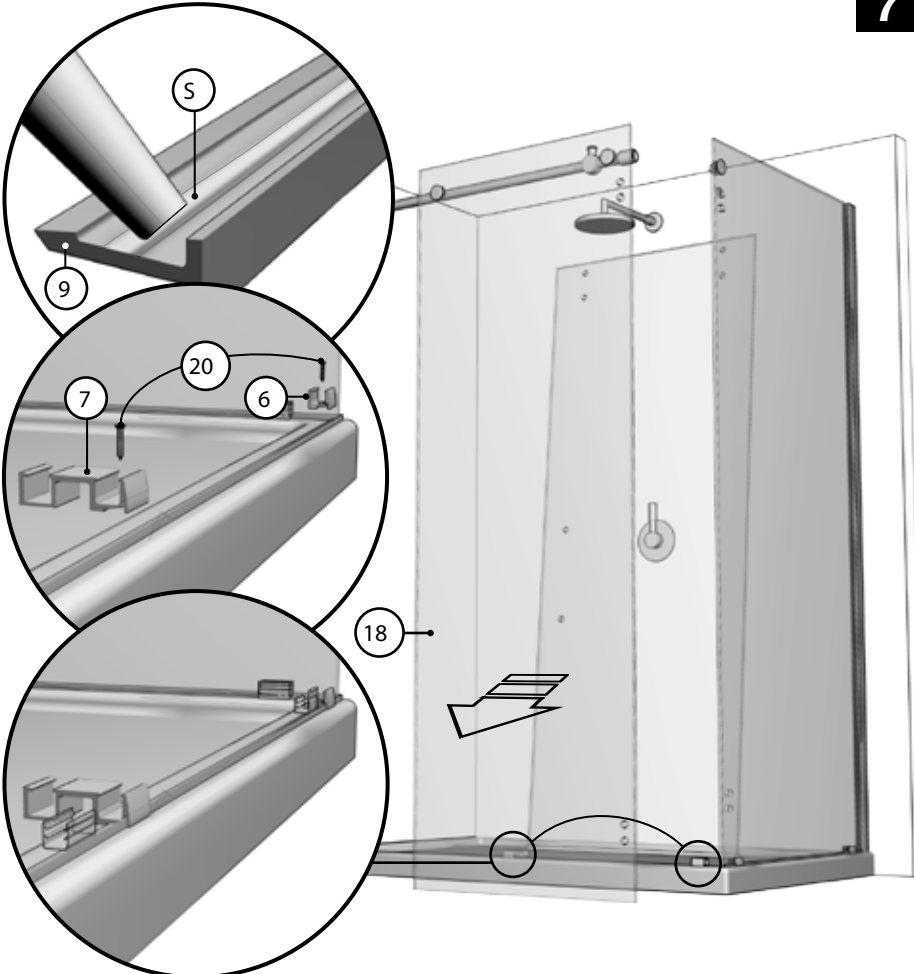




6C

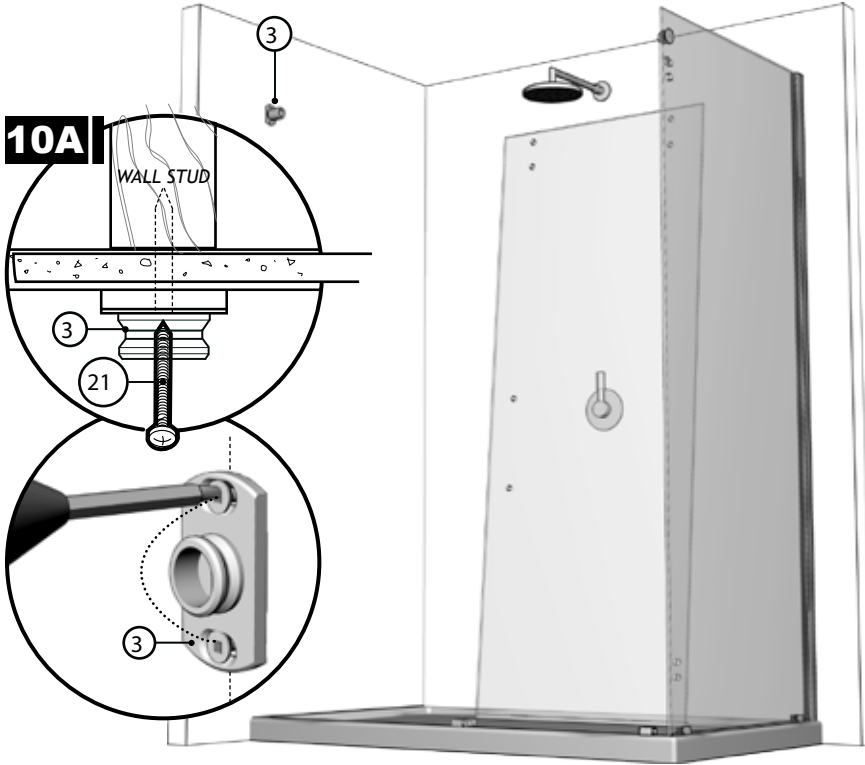
Mark the screw locations for the wall bracket for running rail (3) on the wall as well as the placement the glass clip (6) and bottom center guide (7).

7 THRESHOLD



Remove the fixed panel (18) so as to allow placement of the threshold (9) onto the base. Ensure that a bead of silicone (S) is applied to the underside of the threshold before installing.

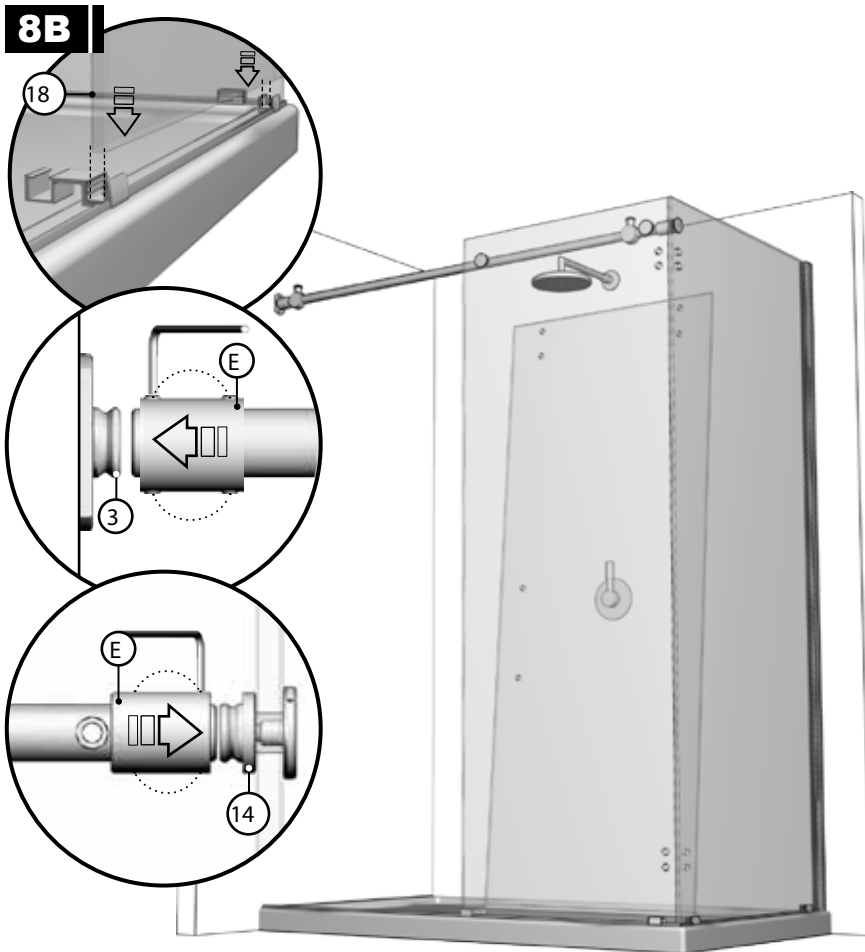
Secure glass clip (6) and bottom center guide (7) with self drilling screws (20) and insert gaskets.



8A

Remove running rail (1) from wall bracket for running rail (3) and return panel glass mount bracket (14). Drill holes in wall with a drill bit, intended for ceramic tiles, through to the wall stud.

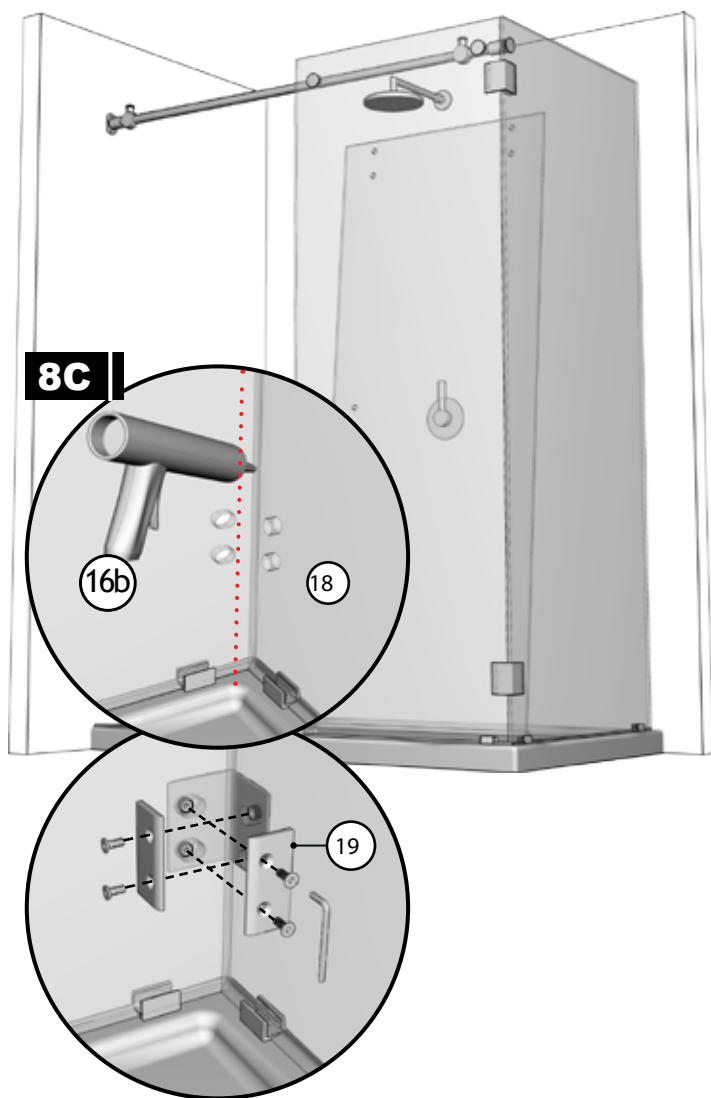
Fasten the wall brackets (3) with #12-3 (21).



8B

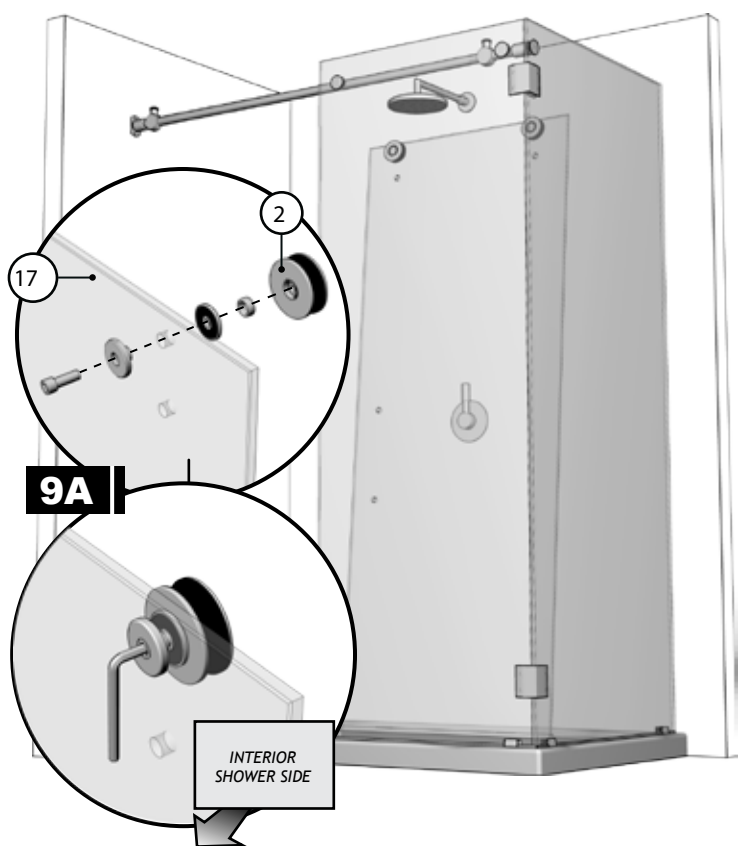
Insert large fixed panel (20) back, ensuring that it's placed in the bottom glass clip (6) and bottom center guide (7).

Slide expanders (E) to bridge the gap over wall bracket for running rail (3) as well as glass mount bracket for return panel (14). Fasten set screws.

**8C**

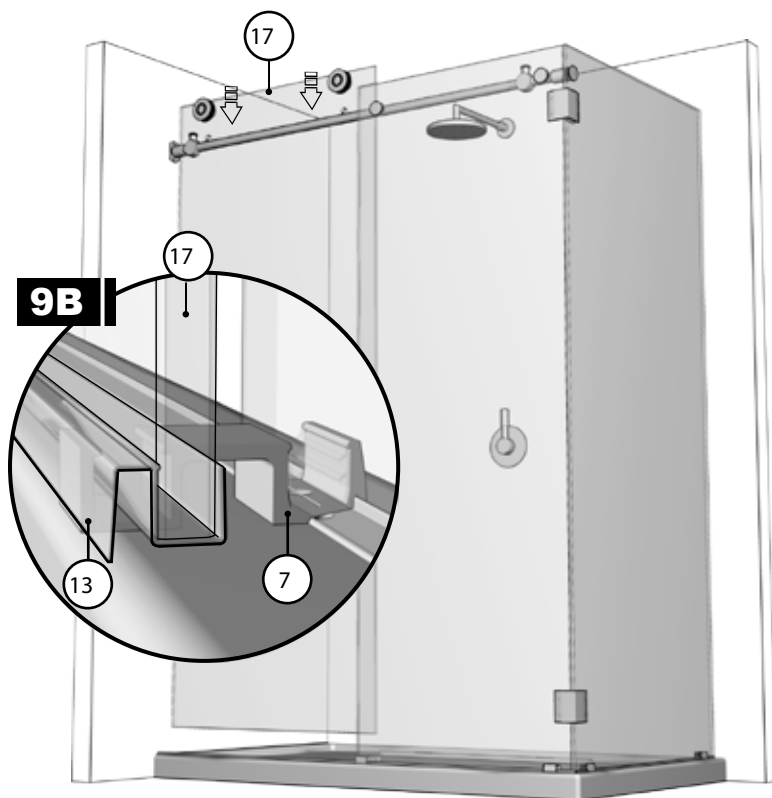
Apply a bead of silicone at the corner of the narrow fixed panel (18) and the return panel (16c). Proceed to securing the assembly with 90° glass corner clips (19).

Assemble a set of double rollers (2) to the door panel's (17) top holes, as illustrated.

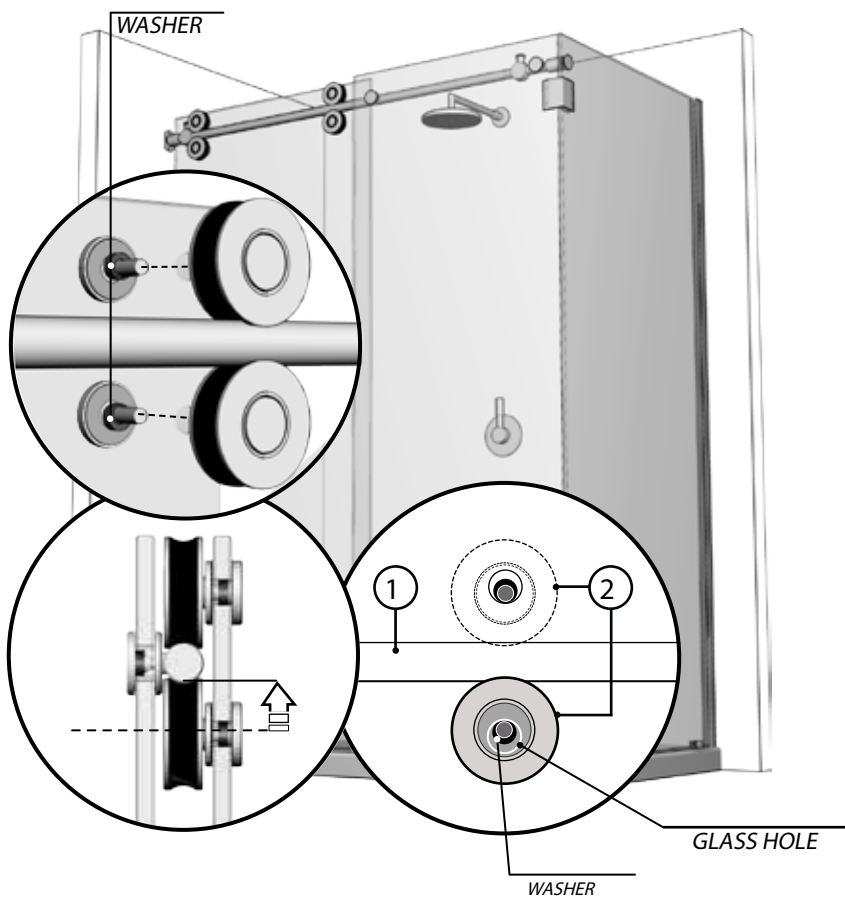


9B

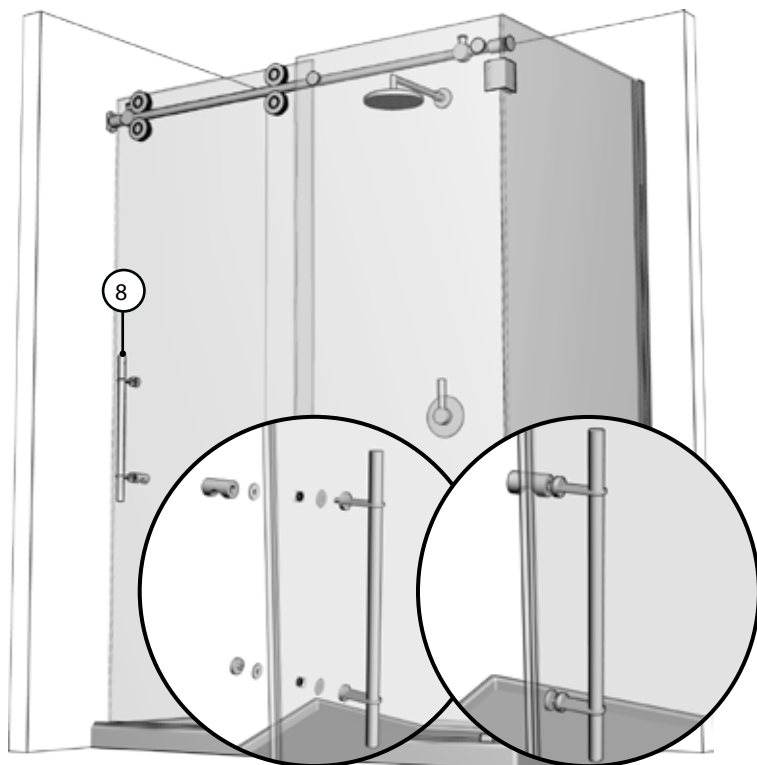
Install door panel (17), ensuring that a set of rollers (2) are positioned over the running rail (1).



Ensure that the door panel (17) is placed within the bottom center guide (7).

**9C**

Install second set of double rollers (2) to the bottom holes of door panel (17), making sure that they are tangent to the running rail (1) by way of the excentric washers.

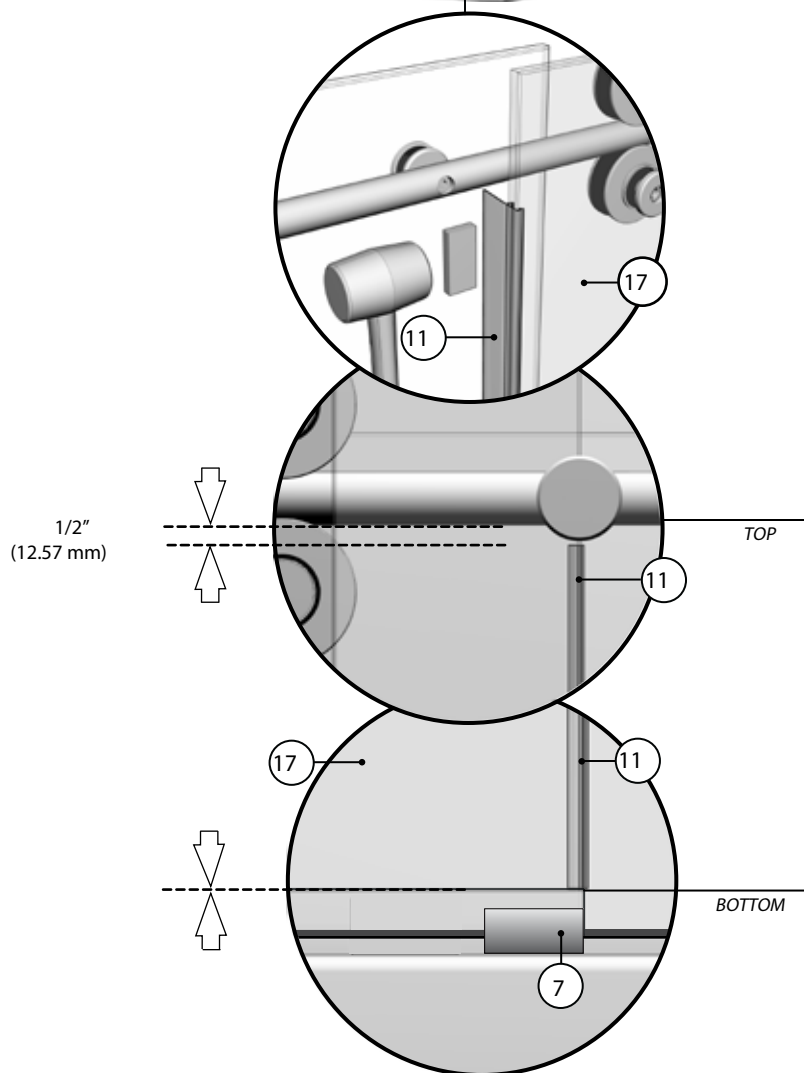
10 STRAIGHT HANDLE

Install straight handle (8) onto door panel (17). Ensure that clear washers on either side of glass are installed.

11 DOOR PANEL SIDE GASKET



Install door side gasket (11) onto sliding door panel (17).



12 STOPPERS



DOOR CLOSED

Adjust the position of the stoppers (4) so as to ensure a maximum opening and closing range. Fixed panel gasket (12) should be collapsed against wall when door is closed.

13 SILICONE



Apply silicone (S) between the bottom of the fixed panel (18) and return panel (16b) and the ir appropriate thresholds (9) (10). Silicone application is also recommended along the length of both these thresholds and along the length of the wall jamb (15). In all cases, this is done from the outside of the shower area.

