

**PDR2W-7236-CRP**  
**PDR2W-7242-CRP**

*OWNER'S MANUAL*

Alumax  
**PIPELINE**

**SHOWER ENCLOSURES**



**2 PEOPLE REQUIRED**



**IT IS MANDATORY TO HAVE A WALL STUD ON EACH SIDE OF THE SHOWER UNIT TO SECURELY FASTEN THE RAIL TO THE WALLS.**

P005

## TABLE OF CONTENTS

PARTS LISTING .....	3
PARTS TABLE .....	4
PROVIDED HARDWARE .....	5
REQUIRED TOOLS AND MATERIALS .....	5
WALL JAMB INSTALLATION .....	6
DOOR PANEL .....	7
RETURN PANEL.....	7
RETURN PANEL (CONTINUED).....	8
RETURN PANEL (CONTINUED).....	9
RUNNING RAIL .....	10
GLASS HOLDERS .....	11
GLASS CLIPS.....	11
WIDE FIXED PANEL.....	12
WIDE FIXED PANEL.....	13
DOOR (CONTINUED).....	14
NARROW FIXED PANEL .....	15
DOOR PANEL .....	16
DOOR PANEL (CONTINUED) .....	17
STRAIGHT HANDLE .....	17
DOOR PANEL SIDE GASKET .....	18
STOPPERS.....	19
SILICONE.....	19

## GENERAL INSTRUCTIONS

- Read this manual carefully and completely before proceeding.
- Product specifications are subject to change without notice. Use the installation instructions supplied with the product.

### ● SAFETY

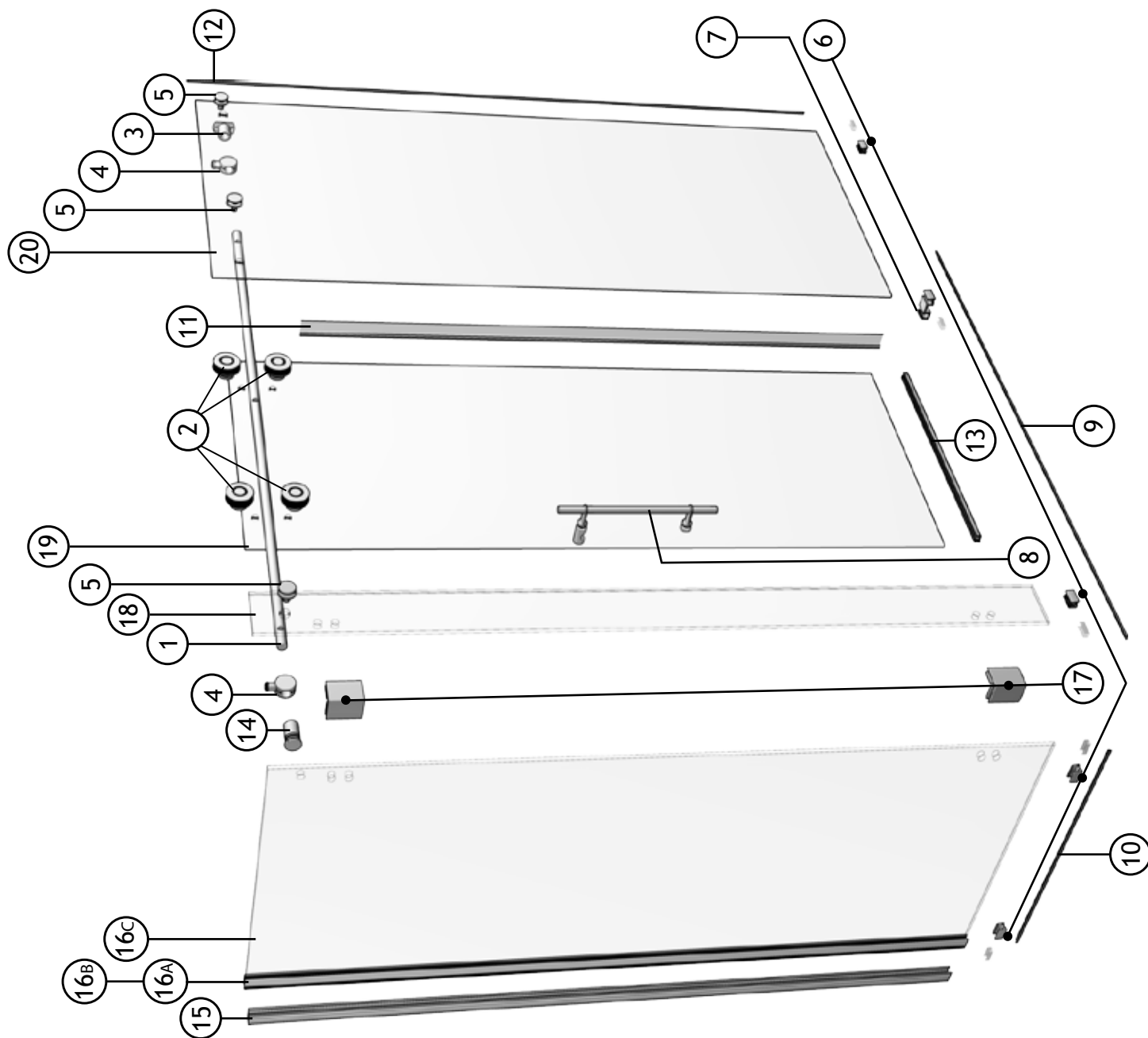
- *It is recommended that you wear safety glasses at all times during the installation.*
- *At all times, 2 people are required for this installation.*

### ● WATERPROOFING

- *No sealant is required inside the shower.*
- *All models are equipped with transparent sealing gaskets.*
- *For models with wall jambs, if your shower door is to be installed over ceramic tiles, the tiles should lay completely under the wall jambs.*

### ● MAINTENANCE

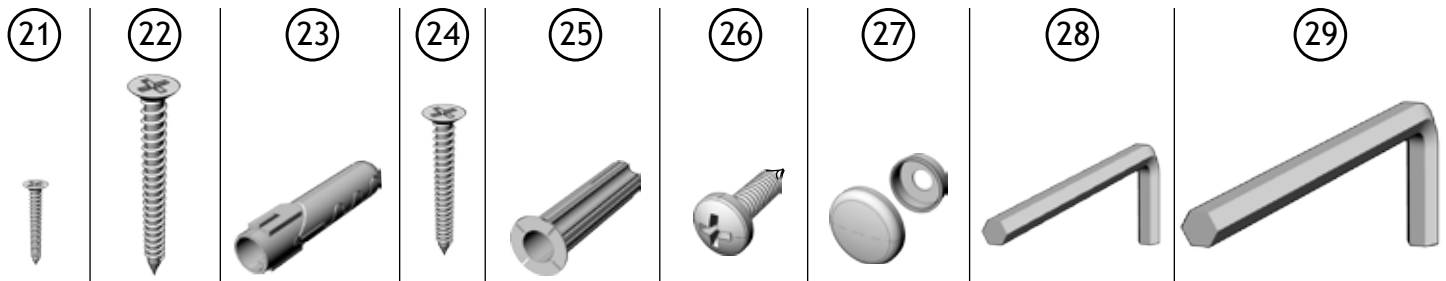
- *Never use scouring powder pads or sharp instruments on metal pieces or glass panels.*
- *An occasional wiping down with a mild soap diluted in water is all that is needed to keep the panels and aluminum parts looking new.*
- *We recommend wiping the glass panels with a squeegee after each use.*



# PARTS TABLE

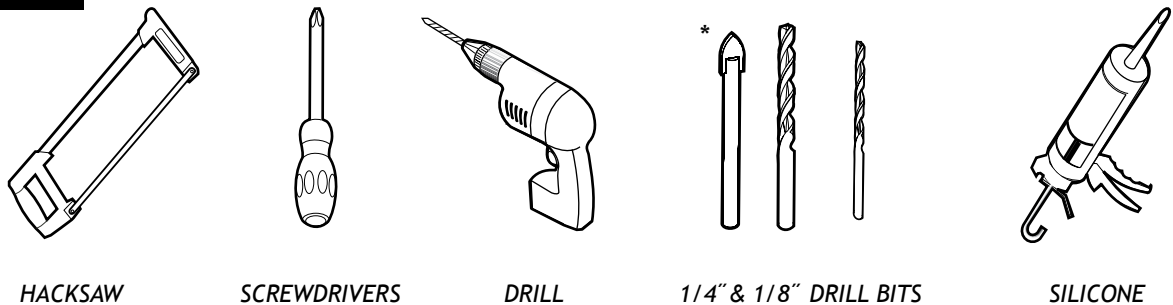
ITEM	PARTS	QTY.
1	Running rail	1
2	Set of double rollers	sets
3	Wall bracket for running rail	1
4	Door stopper	
5	Glass holder for fixed panel	3
6	Glass Clip for bottom of fixed panel	4
7	Bottom center guide	1
8	Straight handle1	
9	Front threshold1	
10	Threshold (return panel)H	1
11	Door panel side gasket	1
12	Fixed panel gasket1	
13	Door panel bottom gasket1	
14	Return panel glass mount bracket + Low head socket screw	1
15	Wall jamb	1
16 a	Expander	1
16 b	Gasket	1
16 c	Return panel	
17	90° glass corner clip 2	
18	Narrow fixed panel	1
19	Door panel	
20	Wide fixed panel	1

## HARDWARE

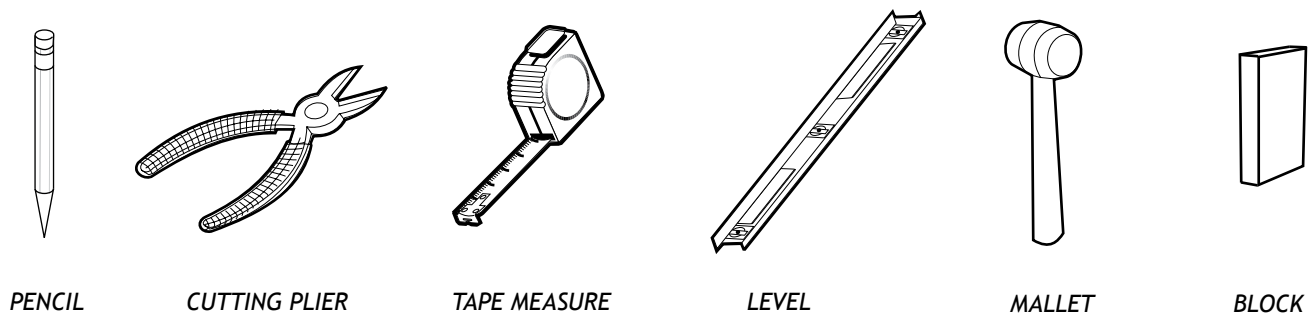


ITEM	HARDWARE	QTY
21	Self-drilling screw #6-1"	4
22	Screw #12-3"	2
23	Anchor (Blanc - White)	2
24	Self drilling screw #8-1 1/4"	4
25	Wall plug (Orange)	4
26	Self drilling screw #8 - 3/8	3
27	screw cap	4
28	Hex L key	1
29	Hex L key	1

## TOOLS



*If the shower panels are to be assembled on ceramic tiles, use a 1/4" drill bit for ceramic tiles.*



## 1 WALL JAMB INSTALLATION

### 1A

Using a measuring tape, mark the center of the threshold of the base.

### 1B

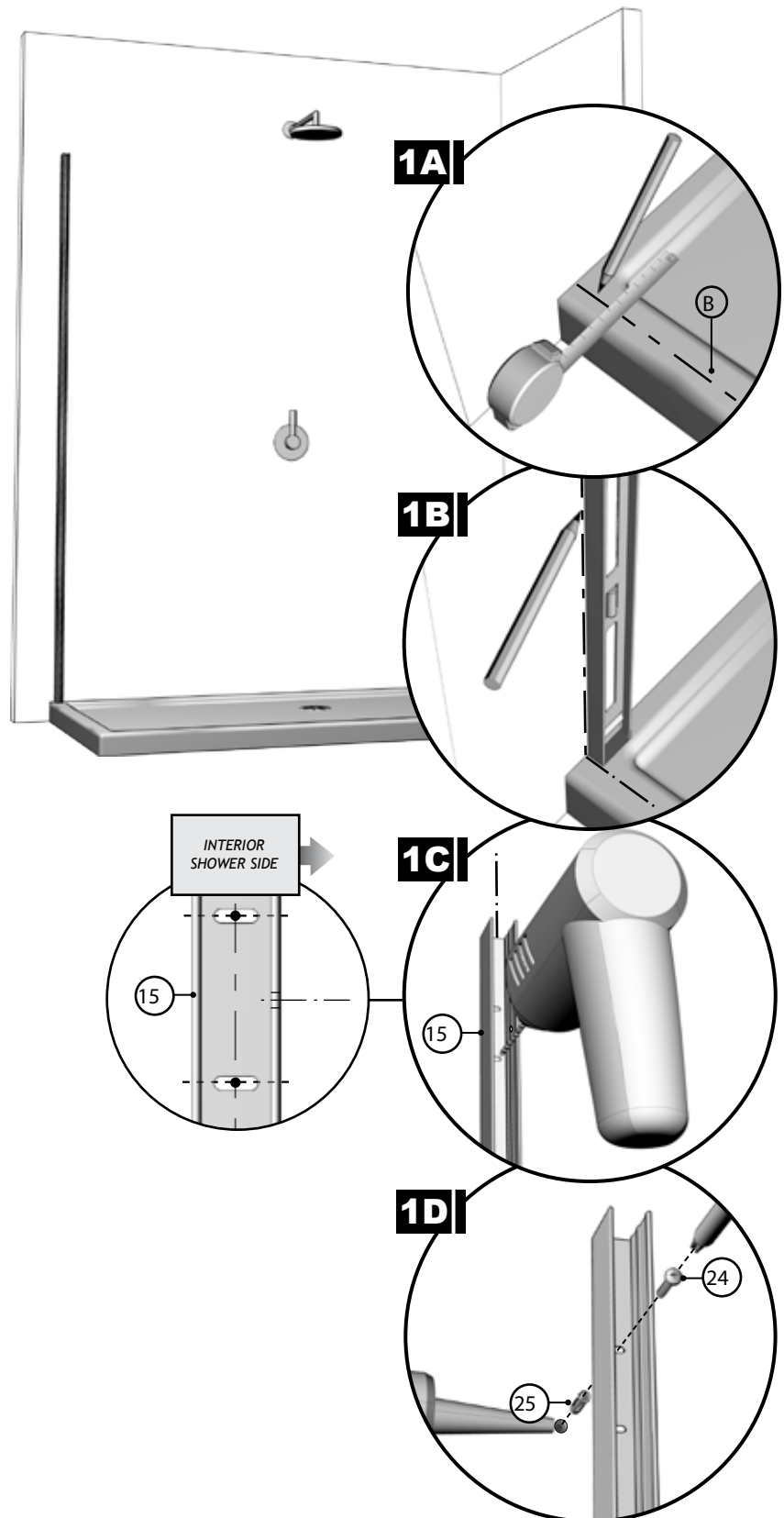
Using the marking established in the previous step, run a second line up the wall. Use a level to ensure verticality of this line.

### 1C

Place the wall jamb onto the wall while ensuring that the wall jamb holes align themselves onto the line running up the wall. Moreover, the side holes of the wall jamb (15) should face the interior of the shower. Proceed to drilling, using a 1/8" drill bit, through the wall using the wall jamb holes as a reference.

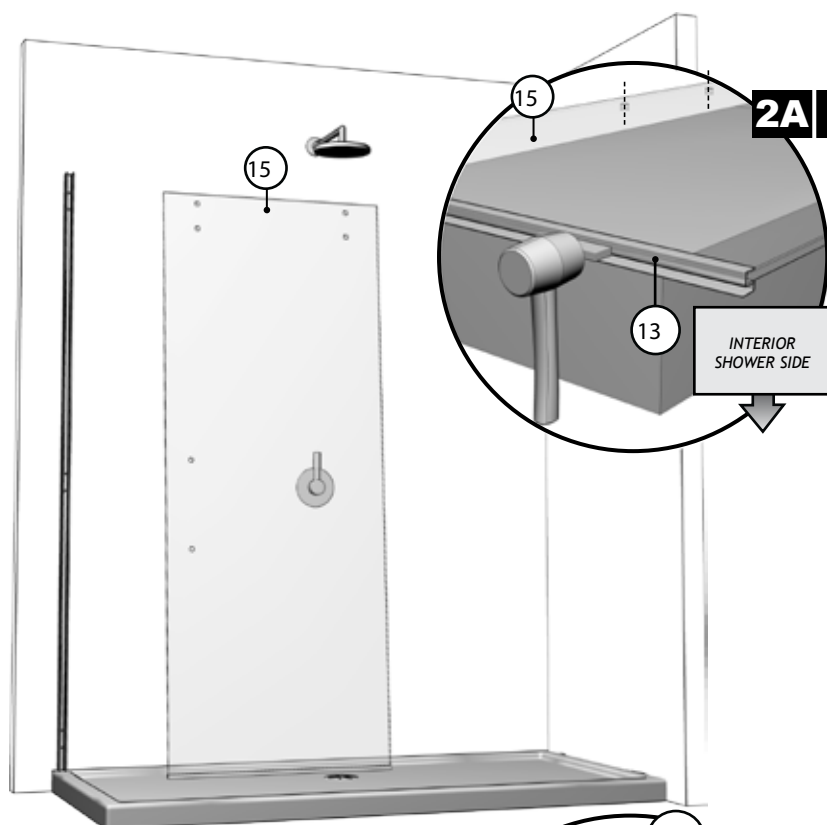
### 1D

Put a drop of silicone into each hole drilled on the wall prior to insert an orange wall plug (25). Reposition and fasten the wall jamb with #8-1 1/4 Self drilling screws (24).



## 2 DOOR PANEL

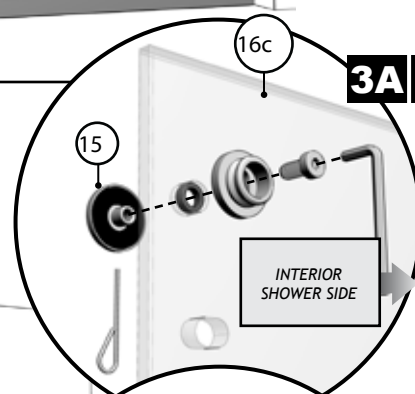
Using the cardboard packaging box as platform, install bottom door gasket (13) onto door panel (15) using a block and a mallet. Notice the gasket orientation.



## 3 RETURN PANEL

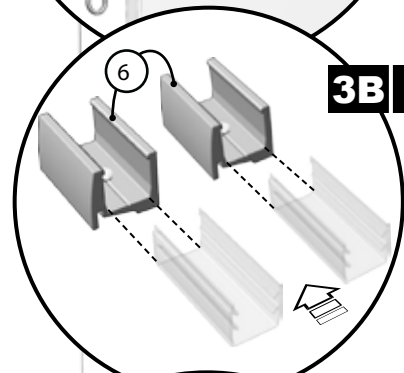
### 3A

Install the return panel glass mount bracket (14) to the return panel (16c) as shown.



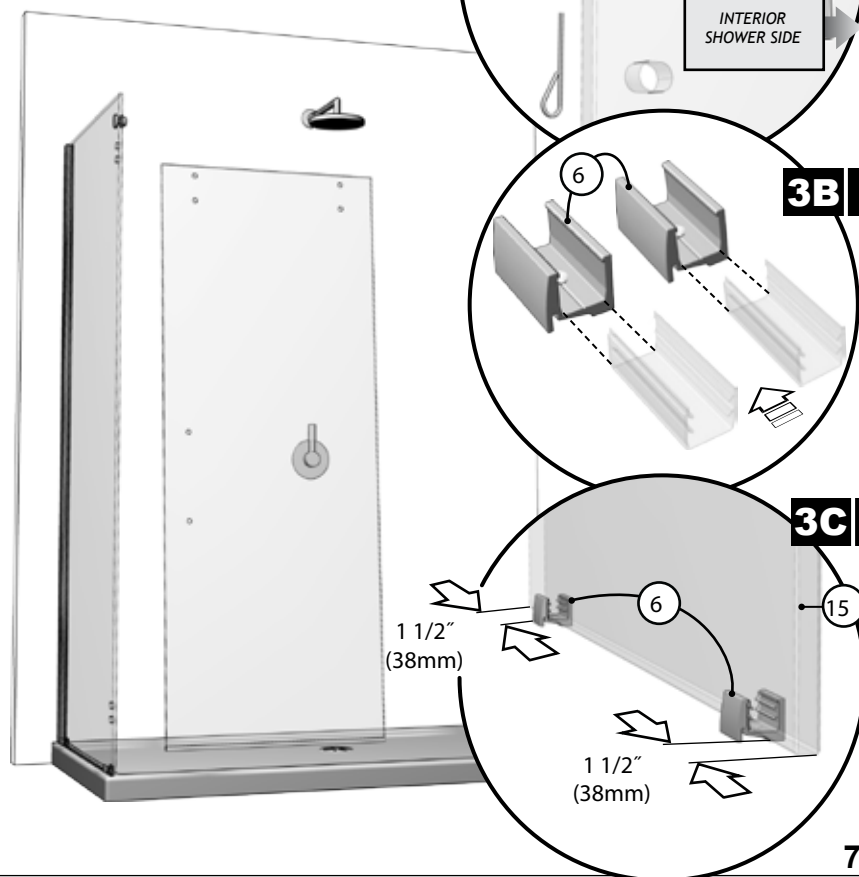
### 3B

Insert gaskets into the glass clips for bottom fixed panel (6).



### 3C

Position the glass clips for bottom of fixed panel to the return panel (16c). Note the distances illustrated.



### 3 CONTINUED

#### 3D

Slide the return panel assembly (16a.b.c) into the wall jamb (15) so as to allow the return panel (16c), along with the clips for bottom of fixed panel (6), to rest on the threshold of the base.

#### 3E

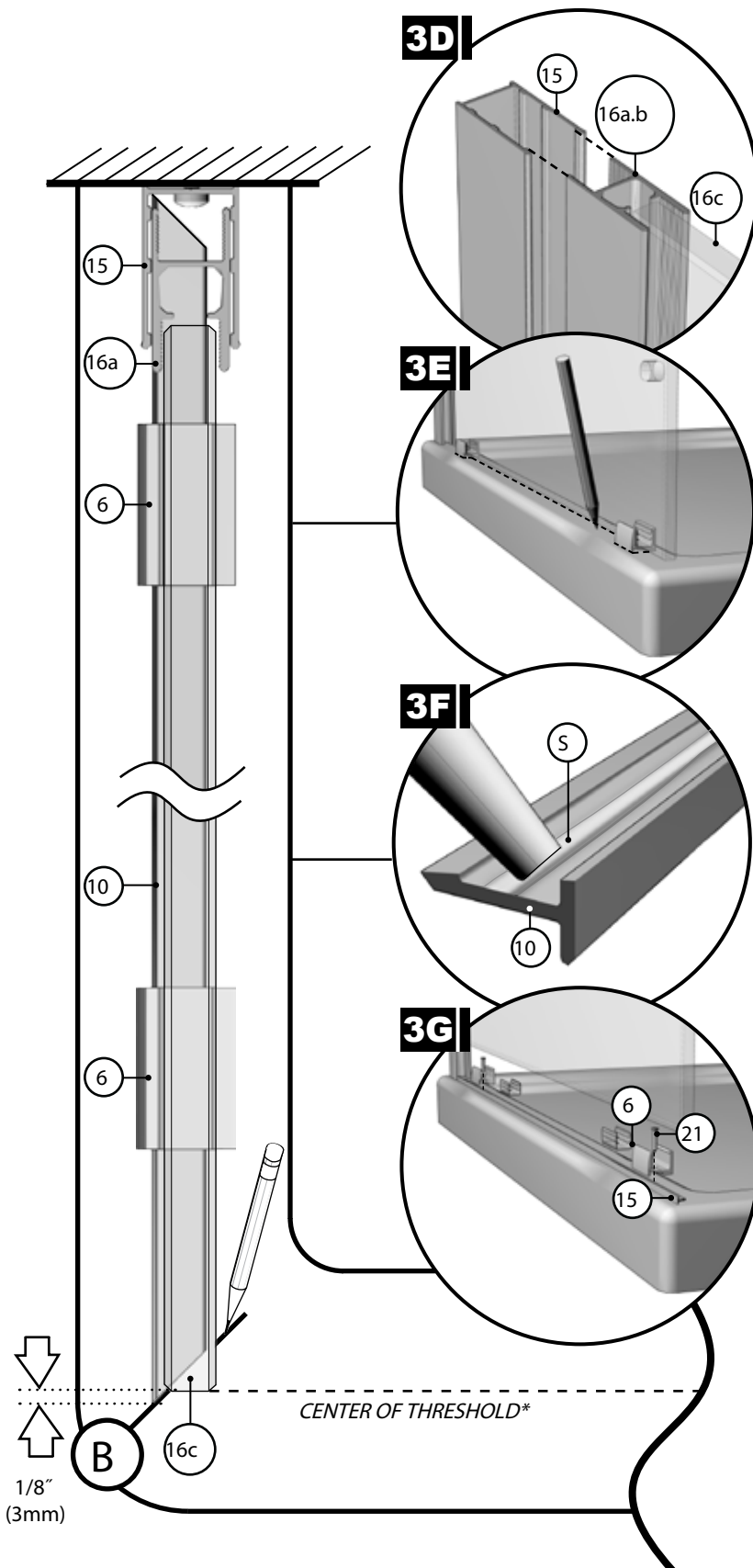
Mark the glass clips for bottom of fixed panel (6) locations on the base, ensuring that the leading edge of the return panel is tangent to the center of threshold of the base. Draw a line marking the position of the front of the threshold (10) in relation to the return panel based on dimension B. Proceed to removing the return panel assembly (16a.b.c) as well as the glass clips (6).

#### 3F

Apply a bead of silicone to the underside of the threshold before proceeding to the next step.

#### 3G

Secure glass clips for bottom of fixed panel on the base, against the threshold (10) at the markings established in step 3E. Secure these with #6-1 self-drilling screws (21) before repositioning the gaskets. Reposition the return panel assembly (16a.b.c) as established in step 3D.





## 3H

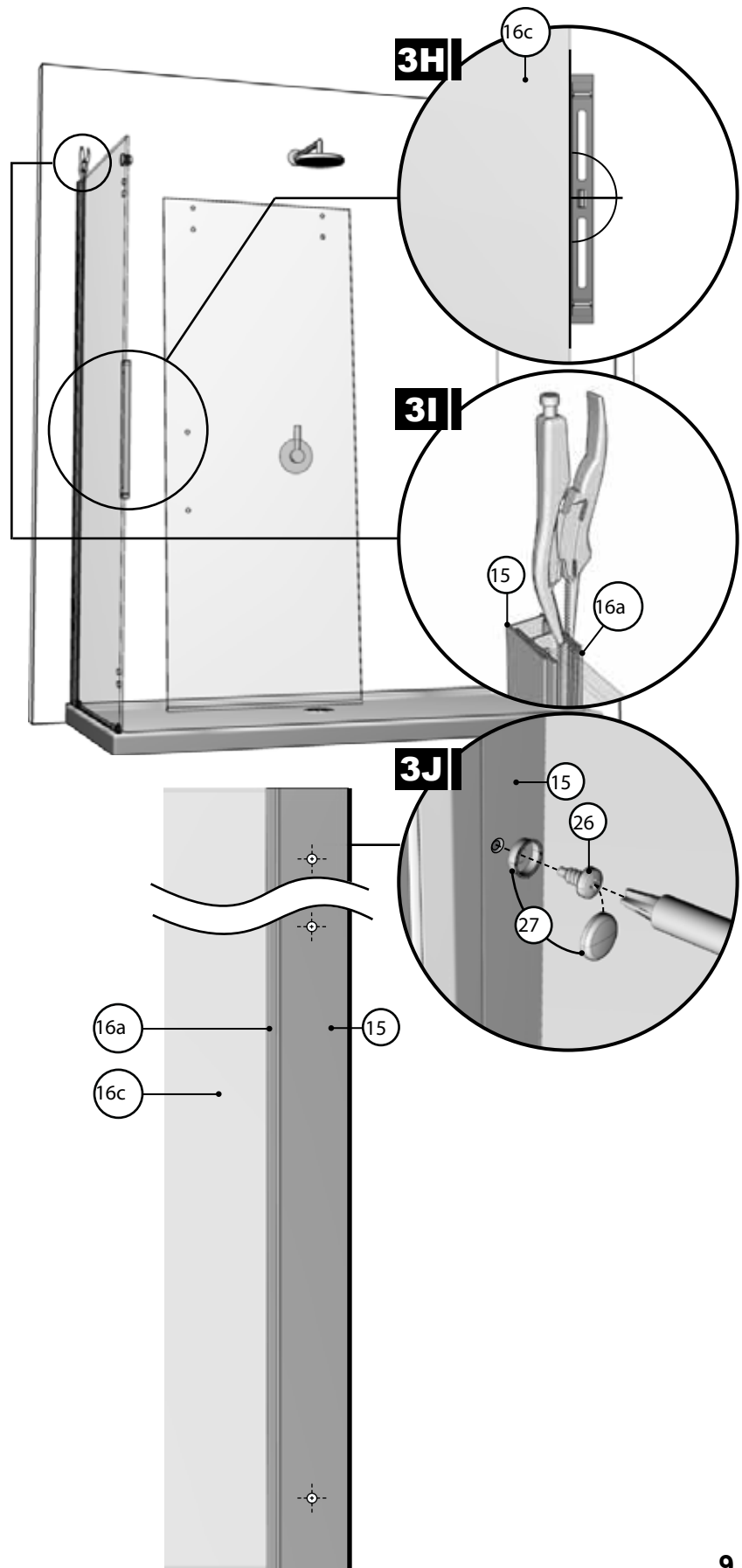
Ensure that the return panel (16c) is vertical by way of a level. If there need be a correction, adjust the verticality of the expander (16a) in relation to the wall jamb (15).

## 3I

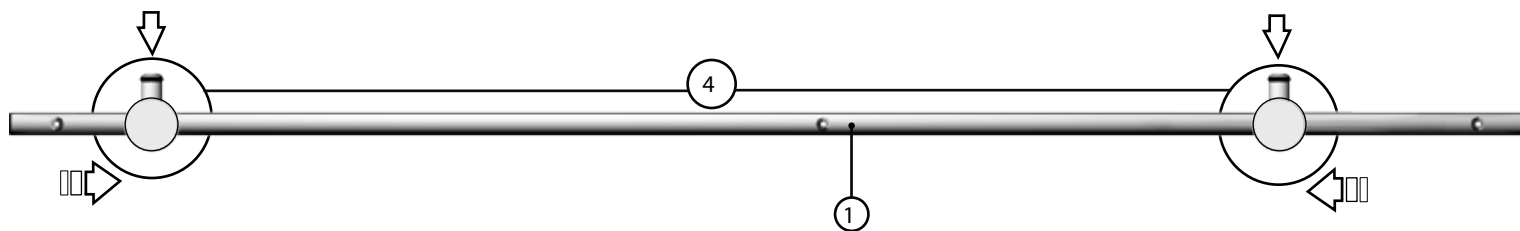
Once the return panel (16c) has been adjusted, secure the expander (16a) to the wall jamb (15) by way of a clamp so as to keep the return panel level (16c).

## 3J

By way of #8- 3/8 screws (26), as well as screw caps (27), permanently secure the wall jamb (15) to the expander (16a).

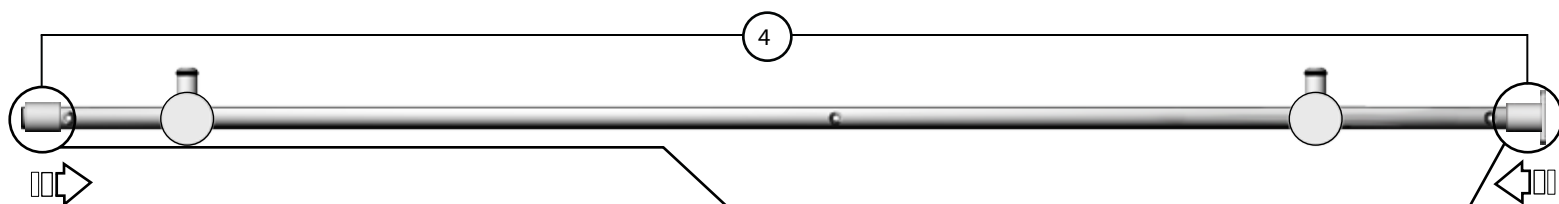
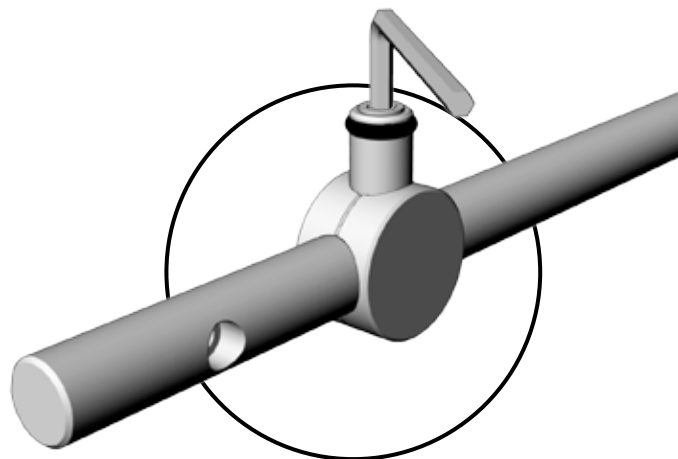


## 5 RUNNING RAIL



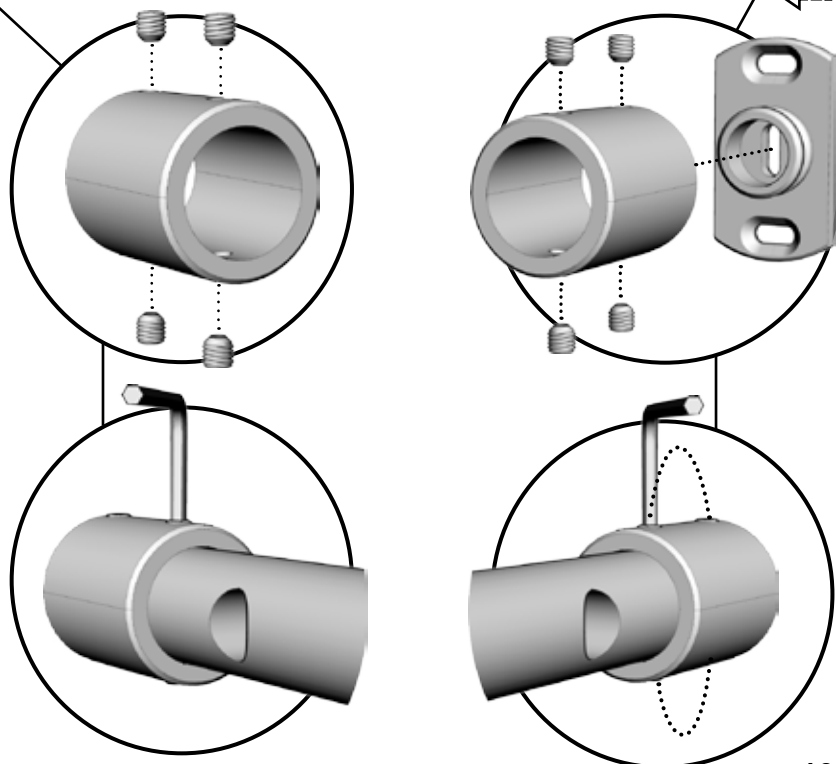
### 5A

Position the stoppers (4) on the running rail (1) as illustrated. Secure them temporarily in place.



### 5B

Position the wall brackets (2) on the running rail (1) as illustrated. Secure them temporarily in place.

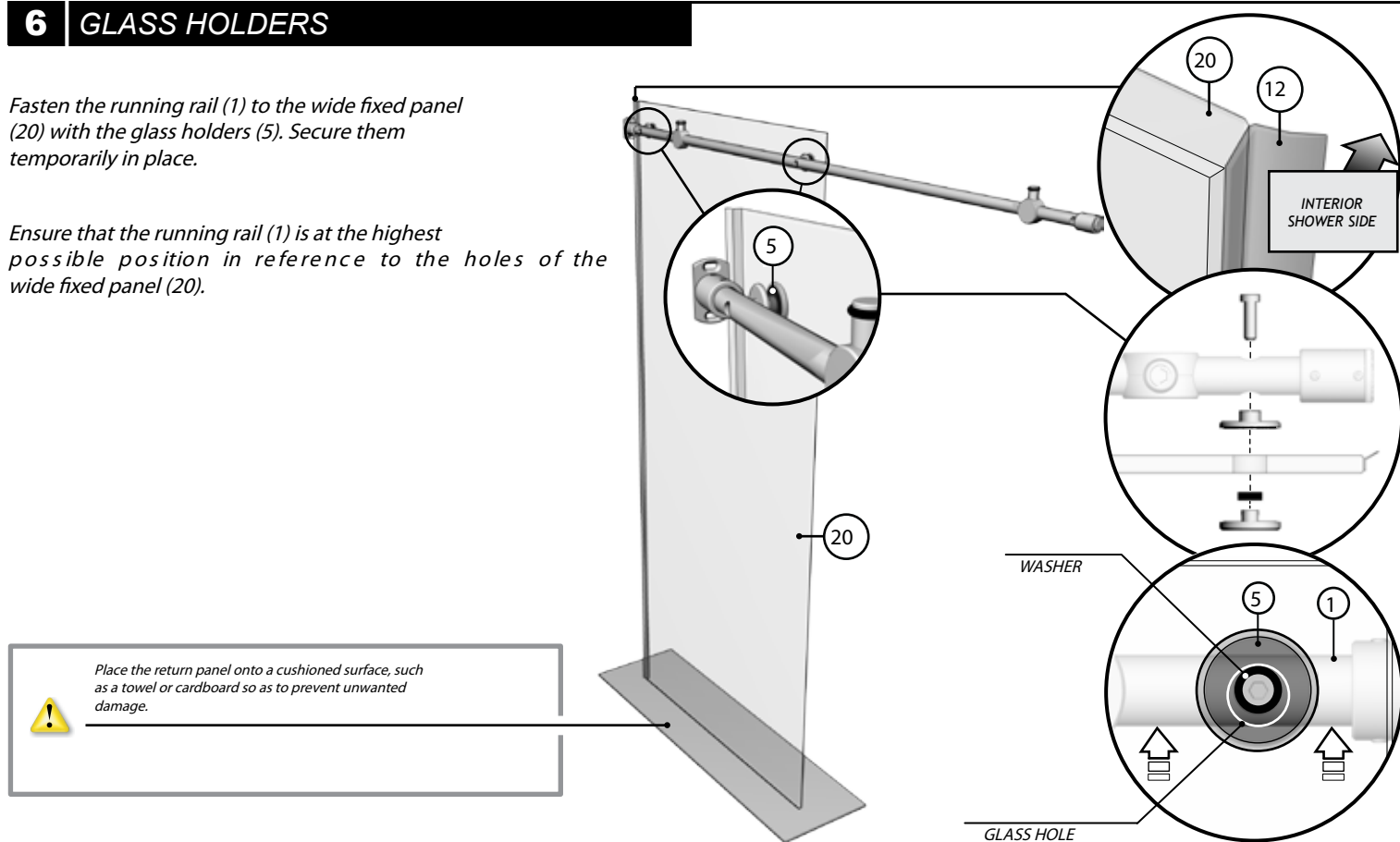


## 6 GLASS HOLDERS

Fasten the running rail (1) to the wide fixed panel (20) with the glass holders (5). Secure them temporarily in place.

Ensure that the running rail (1) is at the highest possible position in reference to the holes of the wide fixed panel (20).

Place the return panel onto a cushioned surface, such as a towel or cardboard so as to prevent unwanted damage.



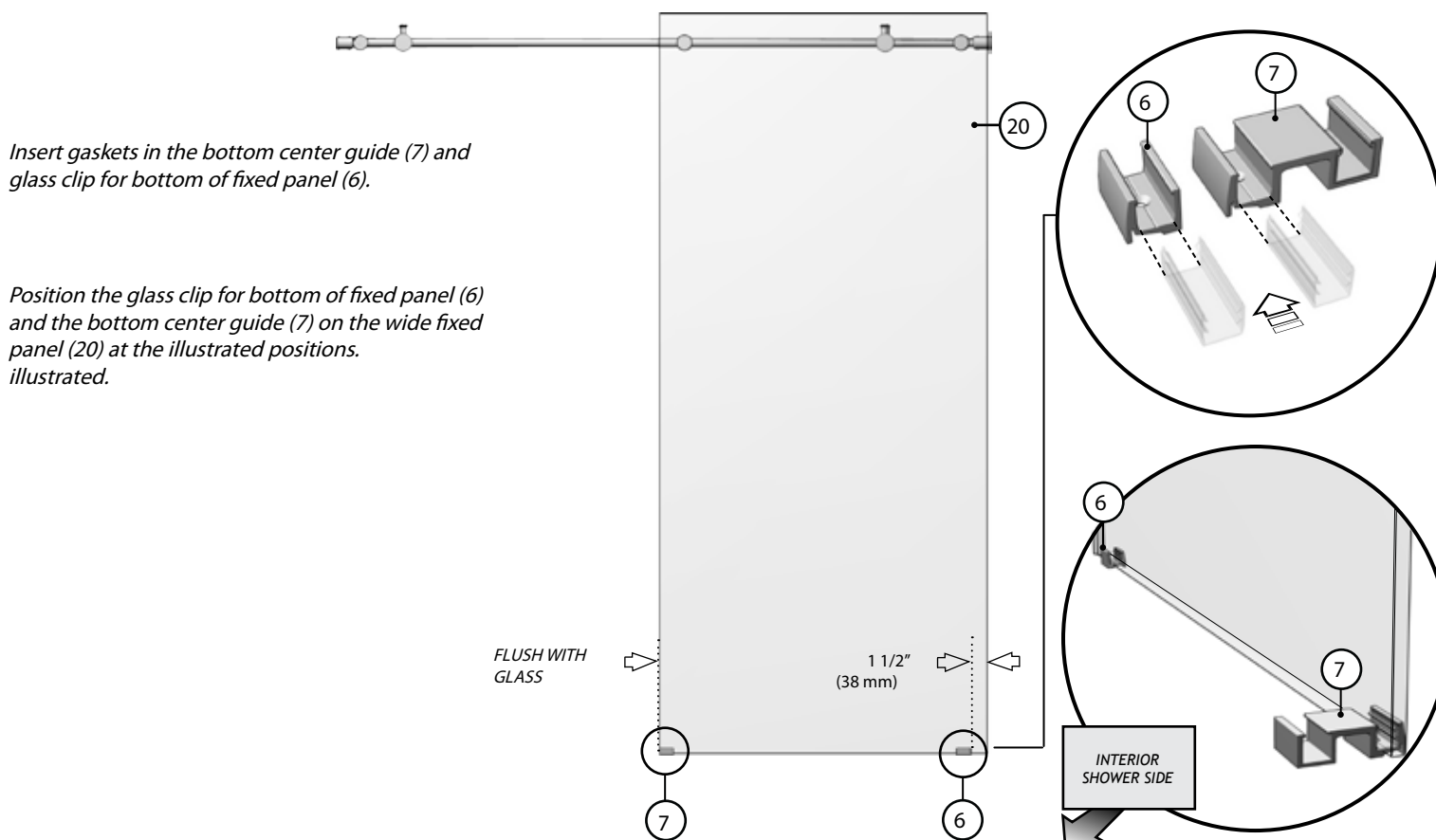
## 7 BOTTOM GLASS CLIPS

Insert gaskets in the bottom center guide (7) and glass clip for bottom of fixed panel (6).

Position the glass clip for bottom of fixed panel (6) and the bottom center guide (7) on the wide fixed panel (20) at the illustrated positions.

FLUSH WITH GLASS

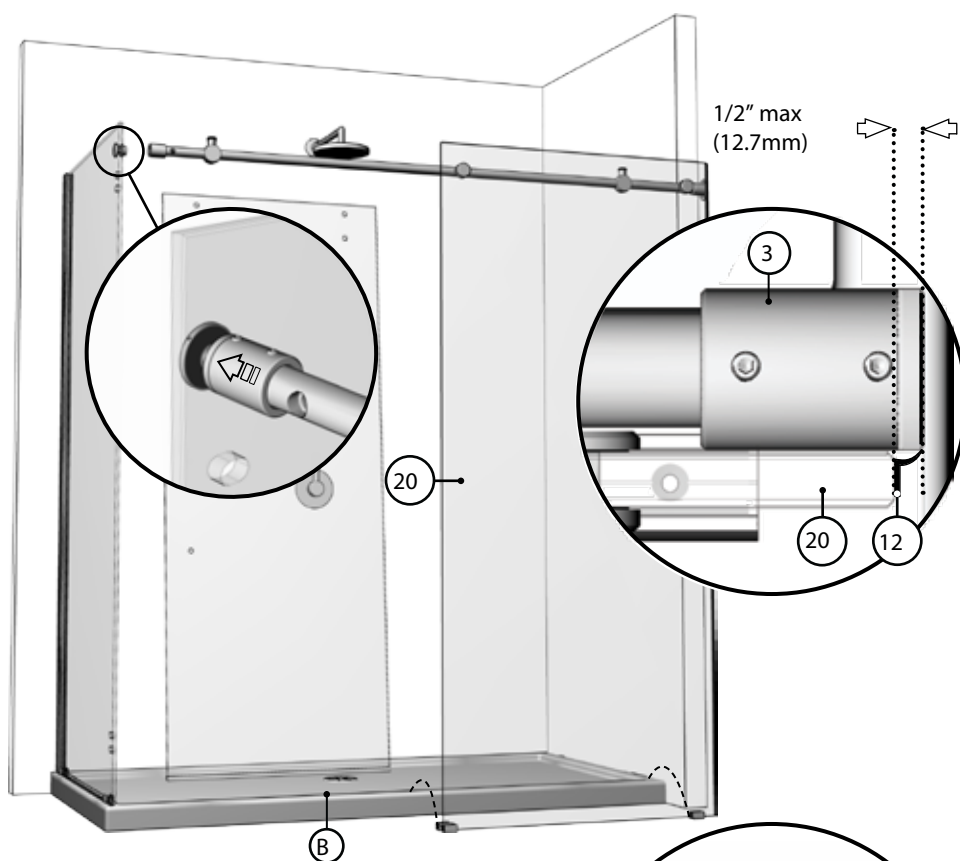
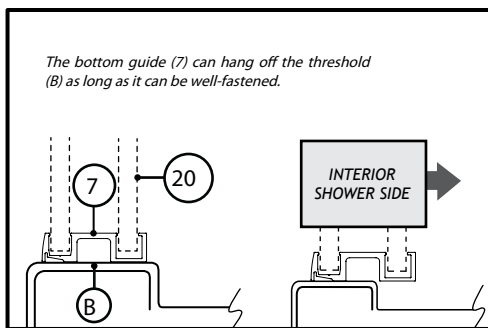
1 1/2"  
(38 mm)



## 8 WIDE FIXED

### 8A

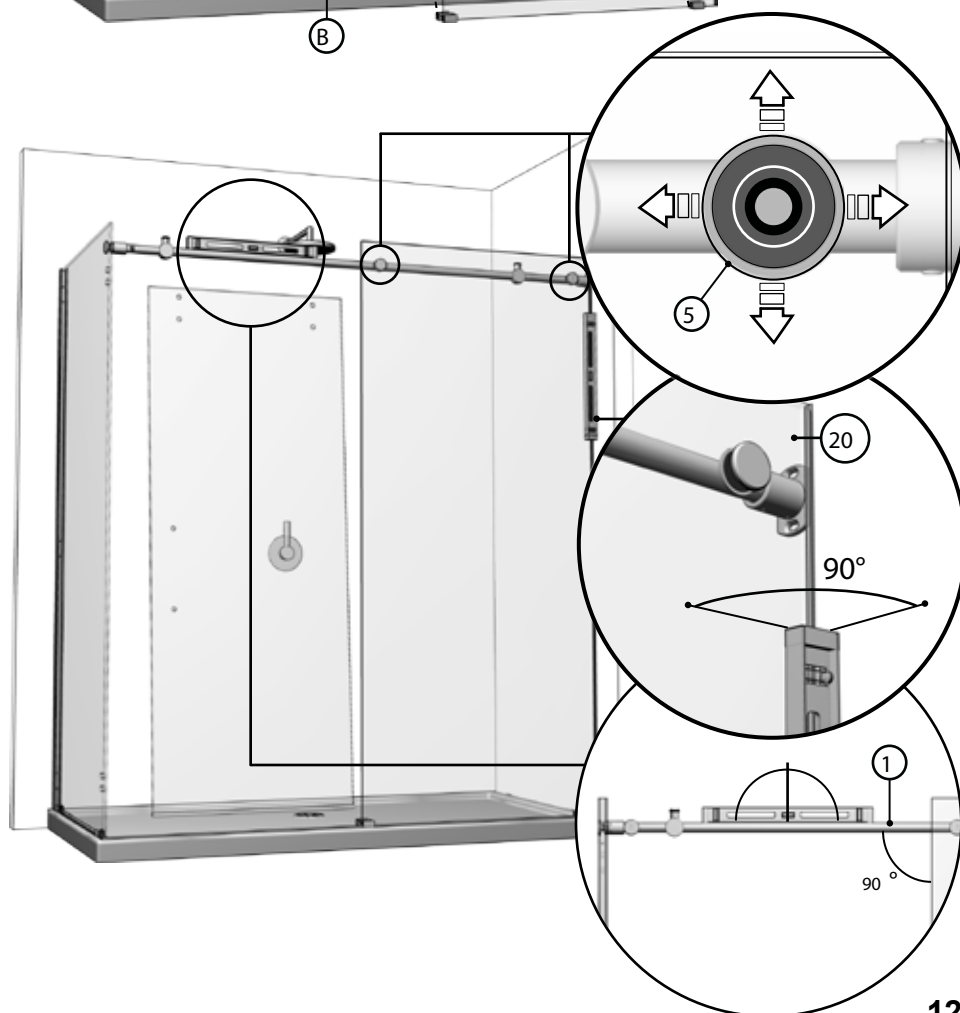
Position the wide fixed panel assembly on threshold of the base (B) as shown. Adjust the wall bracket (3) as well as the return panel glass mount bracket (14) so as to ensure that the running rail (1) is secured.



### 8B

Ensure that the fixed panel gasket (12) collapses against the wall properly.

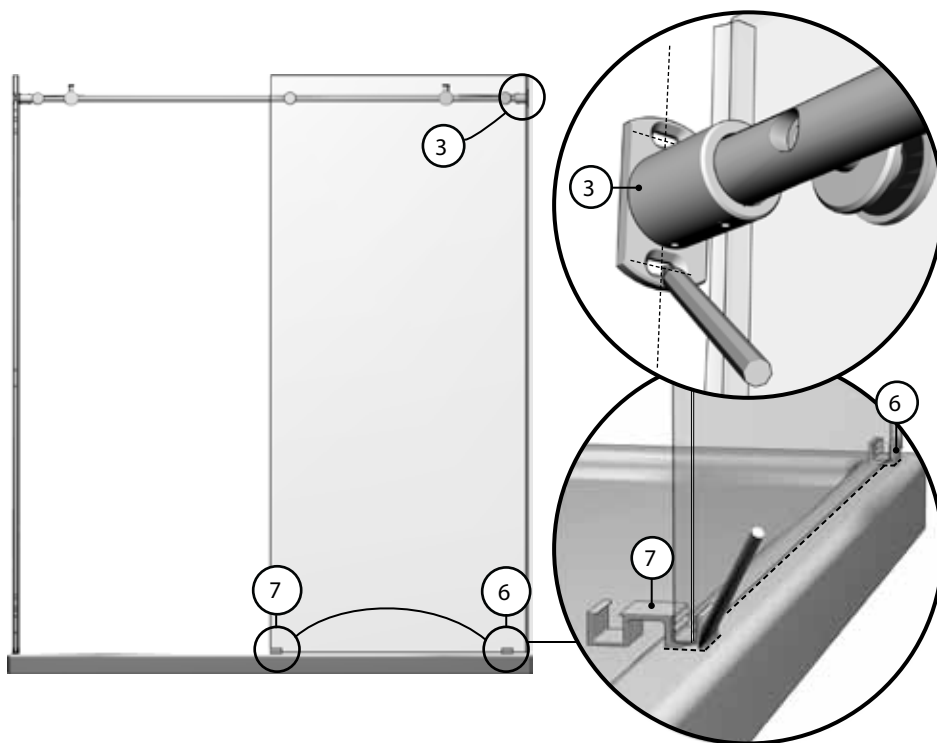
Ensure that the running rail (1) is level and that the wide fixed panel (20) is square. If a horizontal correction is required, adjust and level the glass holders for fixed panel (5).



## 9 WIDE FIXED PANEL

### 9A

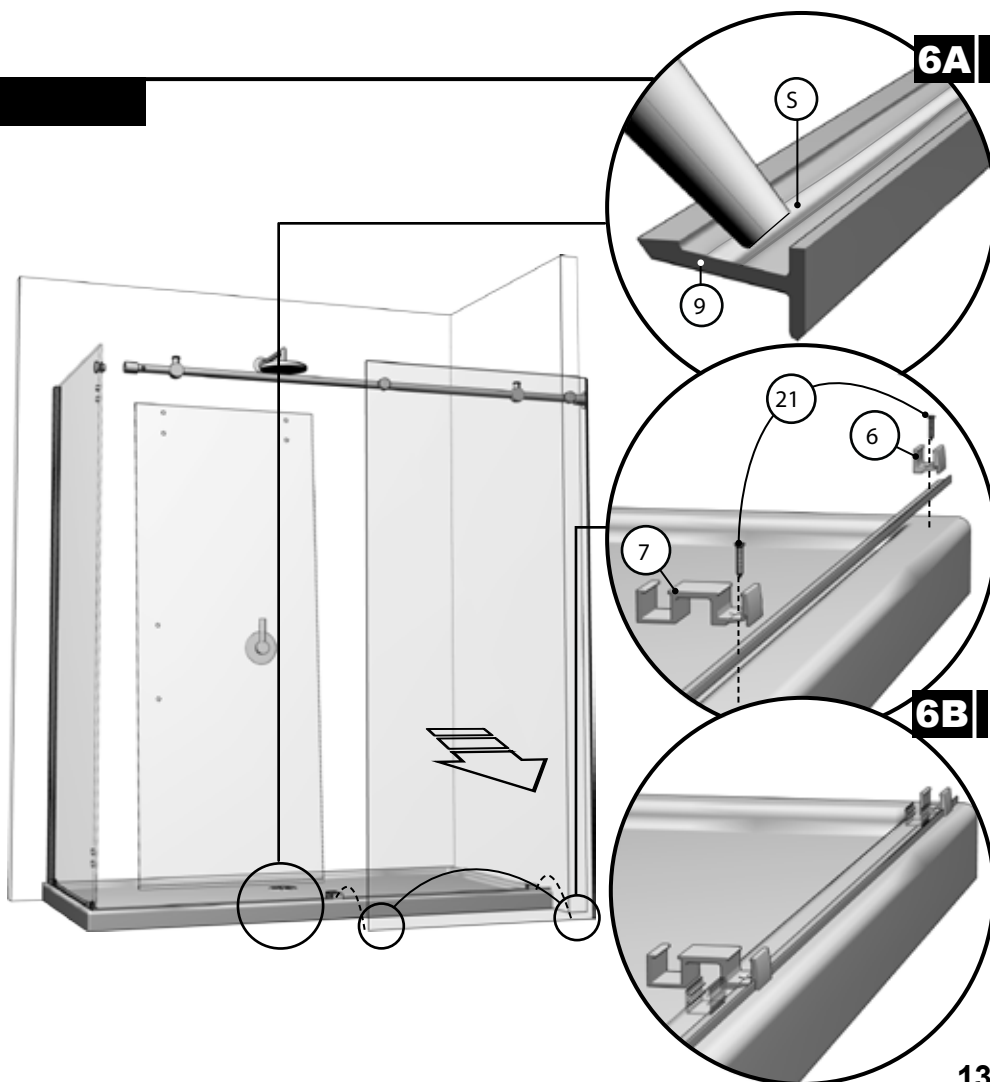
Mark the screw locations for the wall brackets (2) on the walls on both sides of shower as well as the placement the glass clip (14) and bottom center guide (15).



## 9 THRESHOLD

### 9A

Remove the wide fixed panel assembly (7) so as to allow placement of the threshold (13) onto the base. Ensure that a bead of silicone (S) is applied to the underside of the threshold before installing.



### 9B

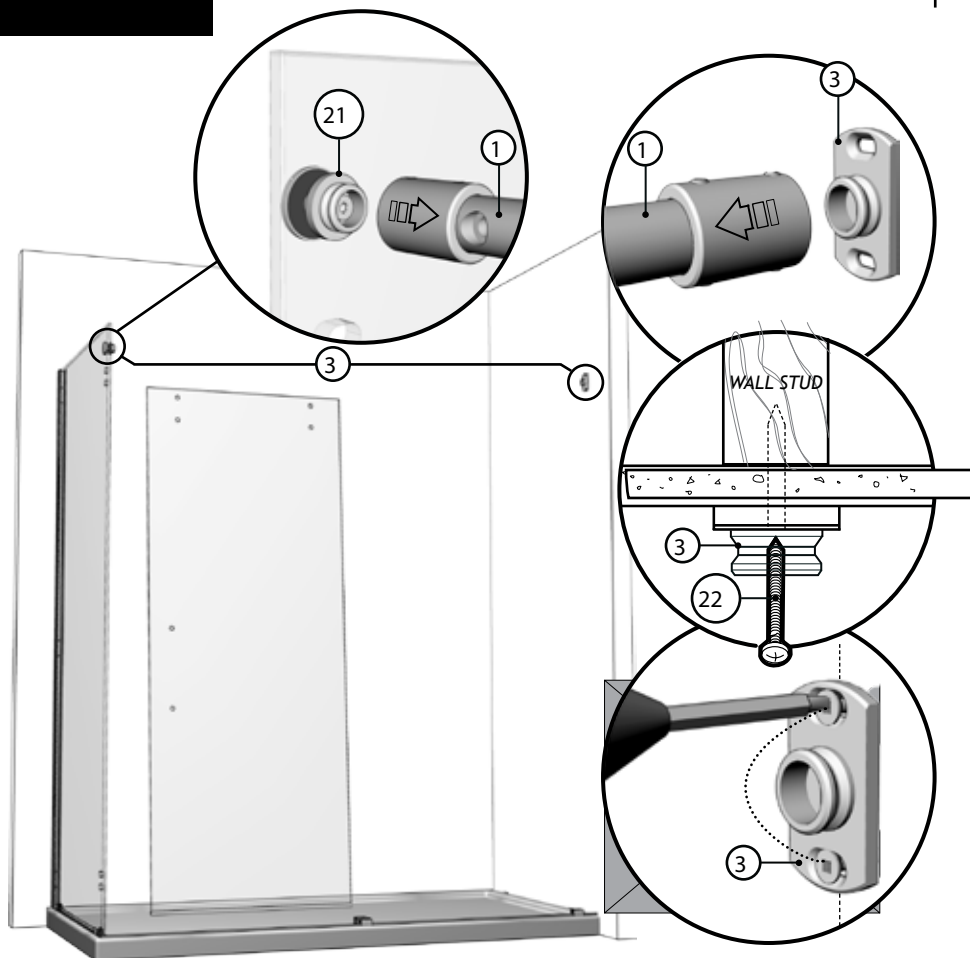
Secure glass clip (14) and bottom center guide (15) with self drilling screws (17) and insert gaskets (16).

## 10 WIDE FIXED PANEL

### 10A

Remove running rail (1) from wall brackets (3).  
Drill holes in walls with a drill bit, intended for  
ceramic tiles, through to the wall stud.

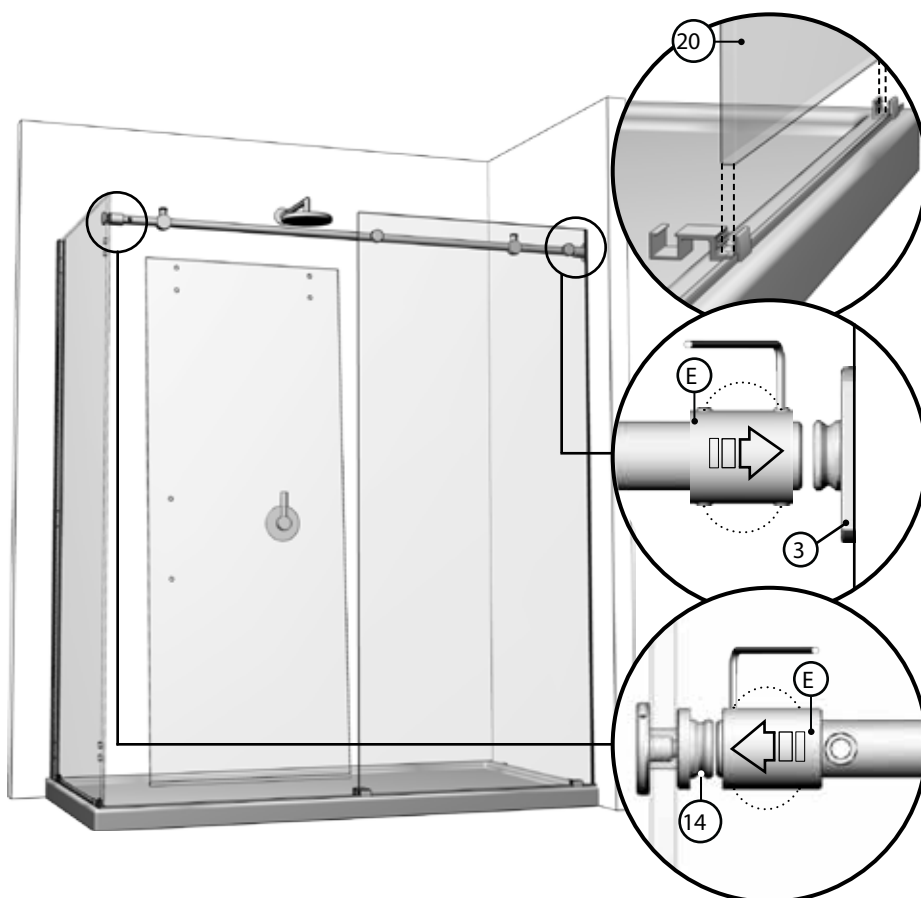
Fasten the wall brackets (3) with #12-3 (22).



### 10A

Insert large fixed panel (20) back, ensuring  
that it's placed in the bottom glass clip (6)  
and bottom center guide (7).

Slide expanders (E) to bridge the gap over  
wall bracket for running rail (3) as well as  
glass mount bracket for return panel (14).  
Fasten set screws.



## 11 SMALL FIXED PANEL

### 11A

Insert the bottom bottom glass clip (14) against the front threshold (9), ensuring that the prescribed distance from the inside of the return panel (16c) is respected. Screw down the glass clip (6) using a #6-1" self-drilling screw (21) and insert the gasket.

### 11B

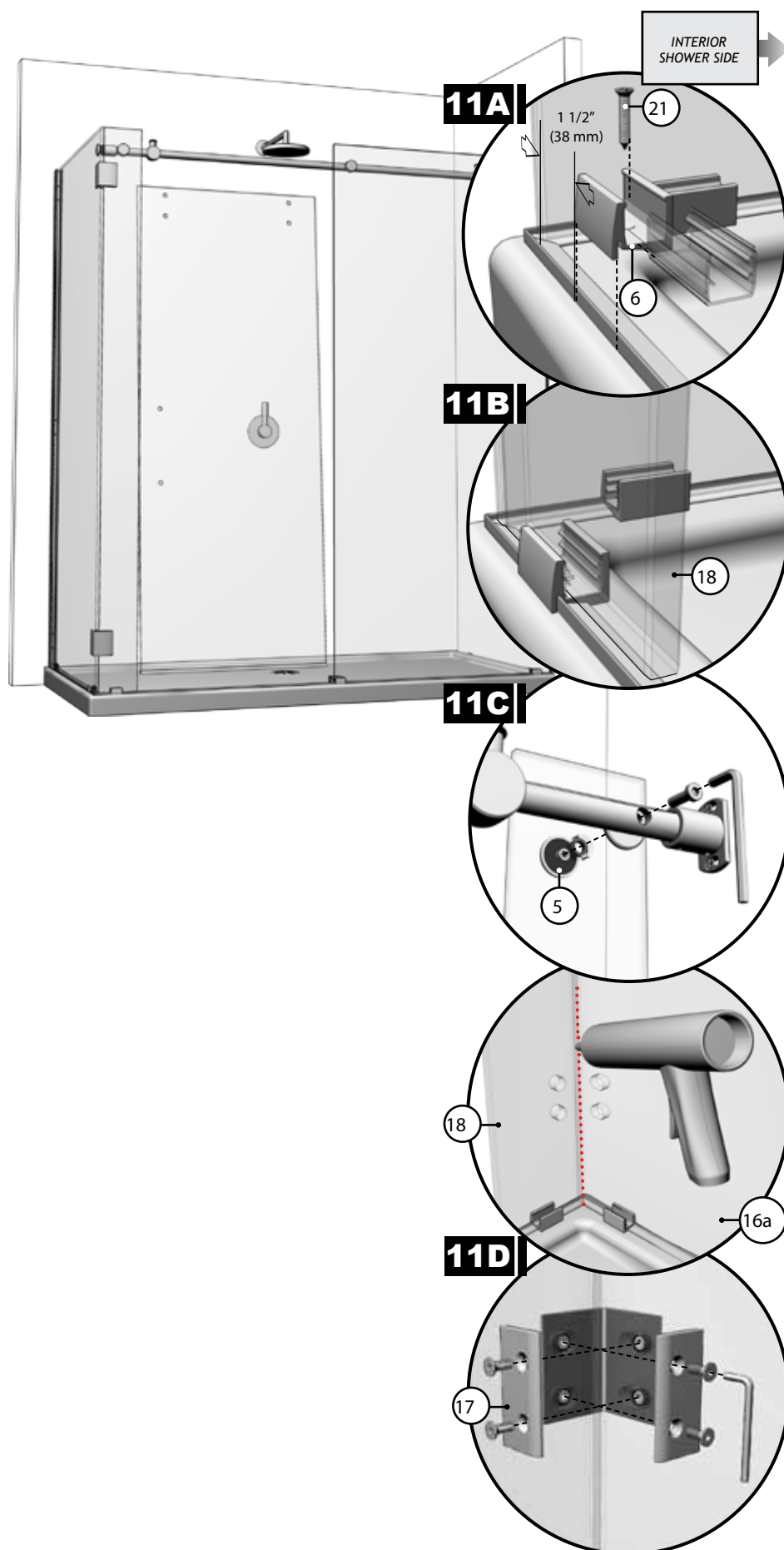
Place small fixed panel (8) within bottom glass clip (14).

### 11C

Fasten the small fixed panel (8) to the running rail (1) by means of the glass holders (5). Align the small fixed panel with the wall so as to ensure that the gasket (10) collapses against the wall.

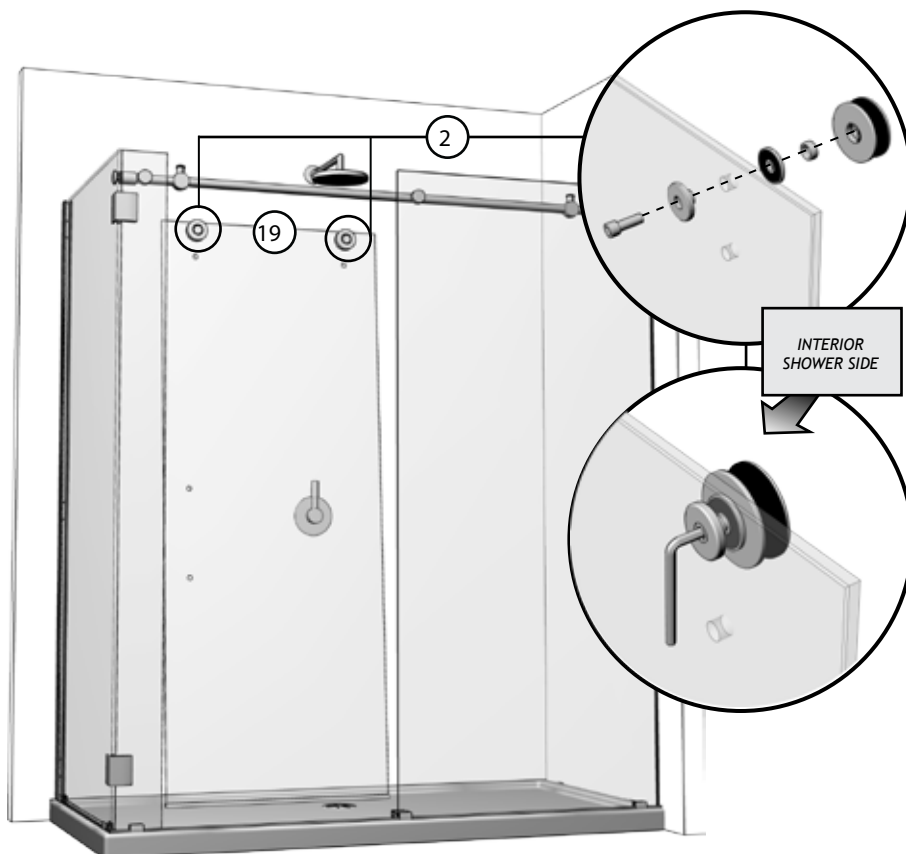
### 11D

Apply a bead of silicone at the corner of the narrow fixed panel (18) and the return panel (16c). Proceed to securing the assembly with 90° glass corner clips (17).



## 12A

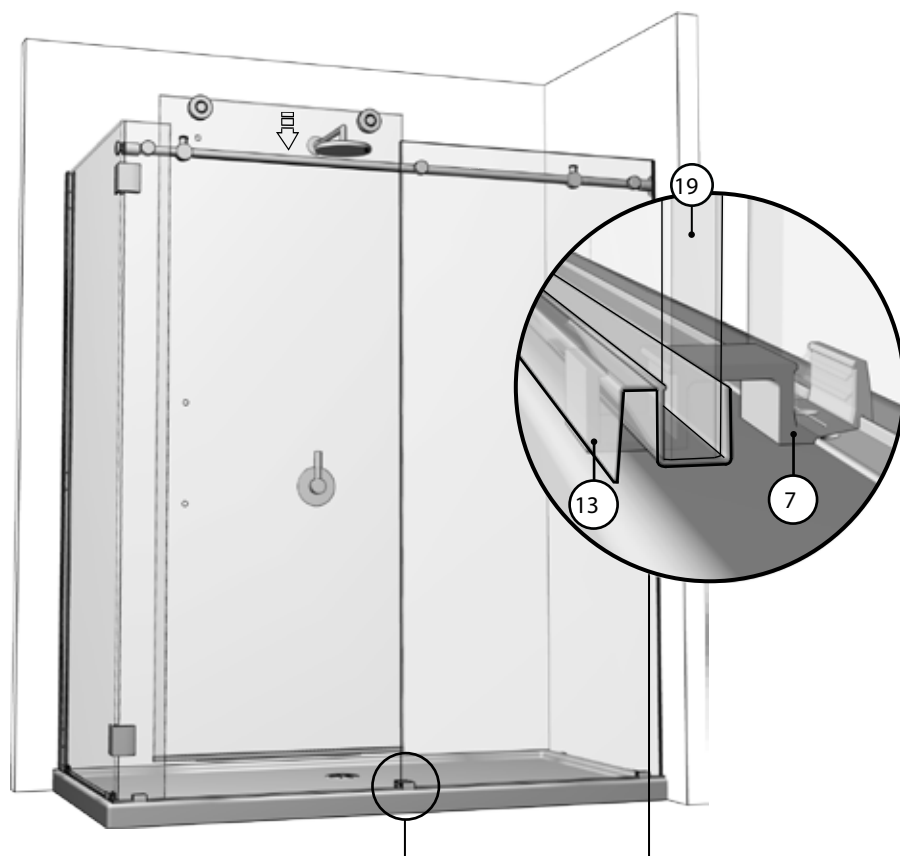
Assemble a set of double rollers (2) to the door panel's (19) top holes, as illustrated.



## 12B

Install door panel (19), ensuring that the rollers (2) are positioned over the running rail (1).

Ensure that the door panel (19) is placed within the bottom center guide (7).

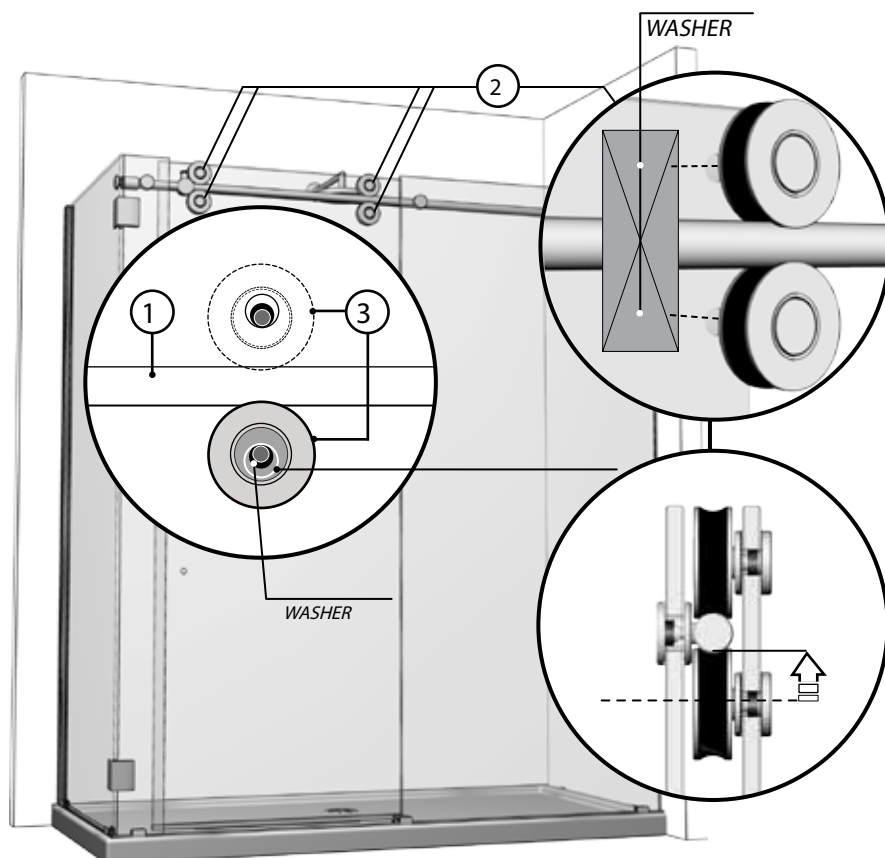




## 12 CONTINUED

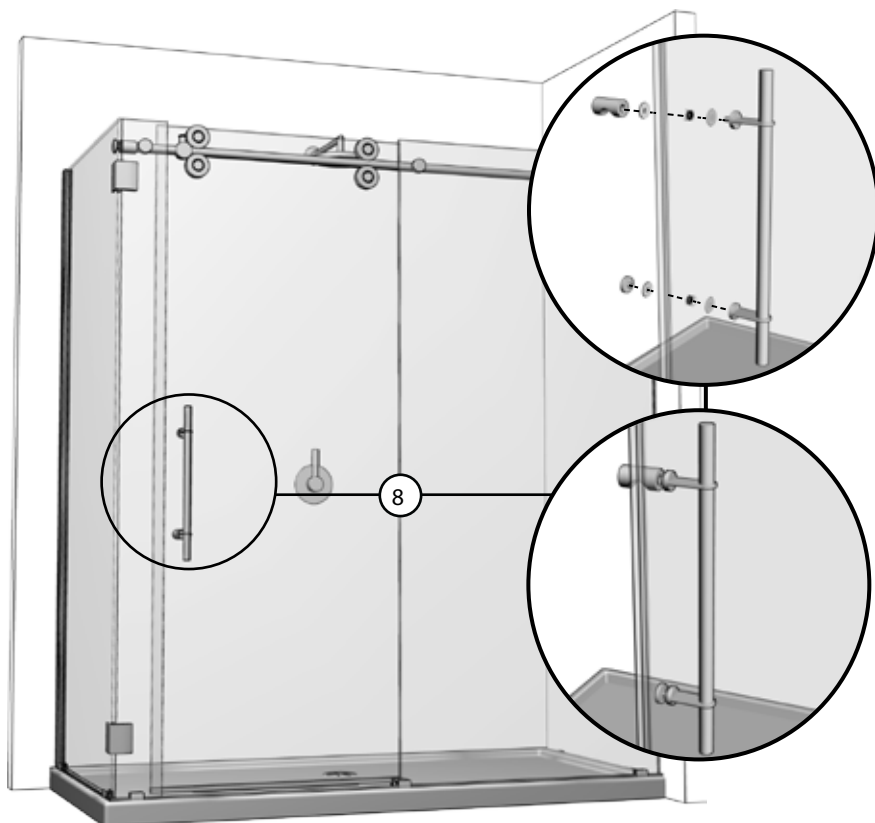
### 12C

Install set of double rollers to the bottom holes of door panel (19), making sure that they are tangent to the running rail (1) by way of the eccentric washers.



## 13 STRAIGHT HANDLE

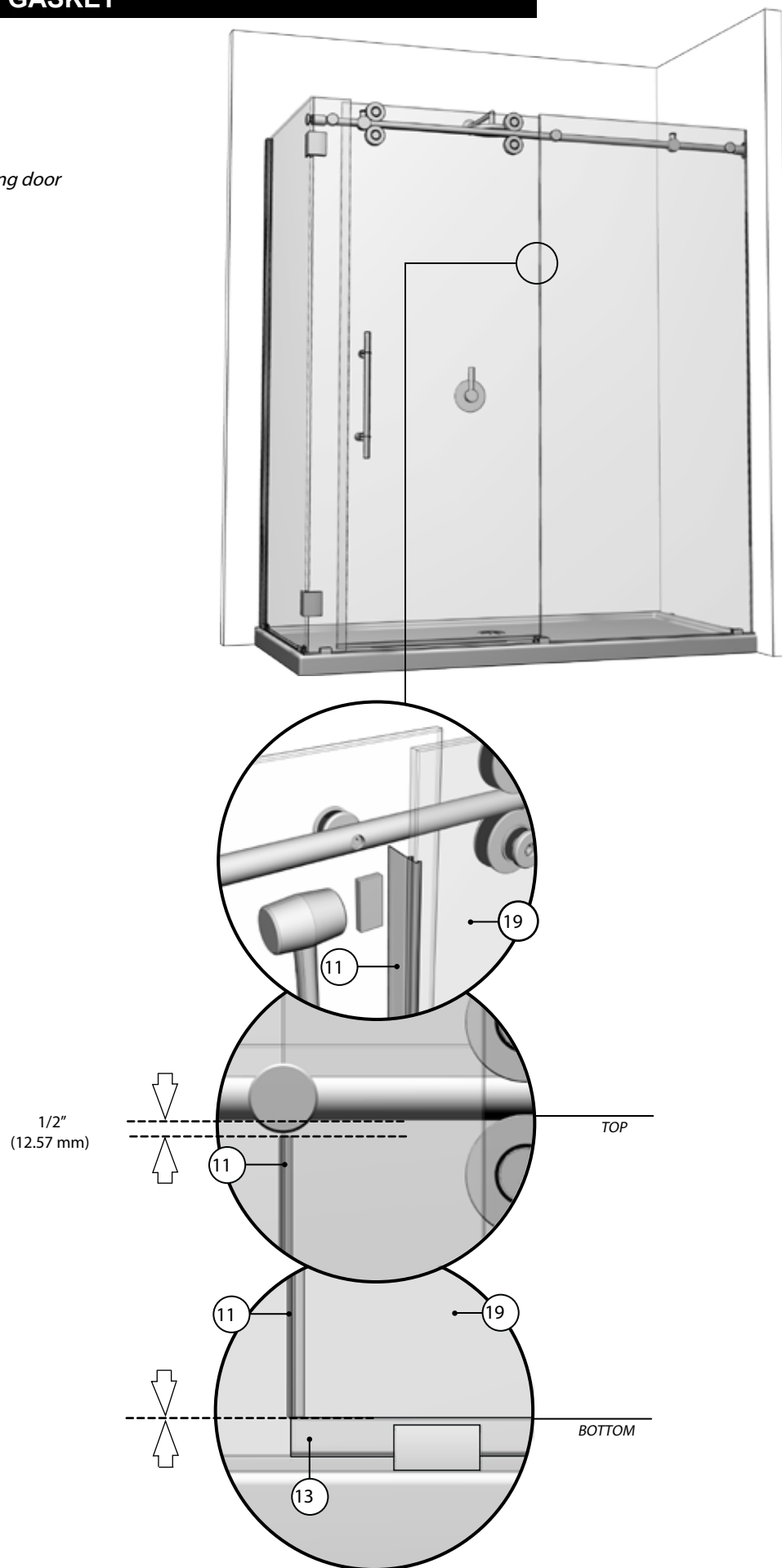
Install straight handle (8) onto door panel (19). Ensure that clear washers on either side of glass are installed.



## 13 DOOR PANEL SIDE GASKET

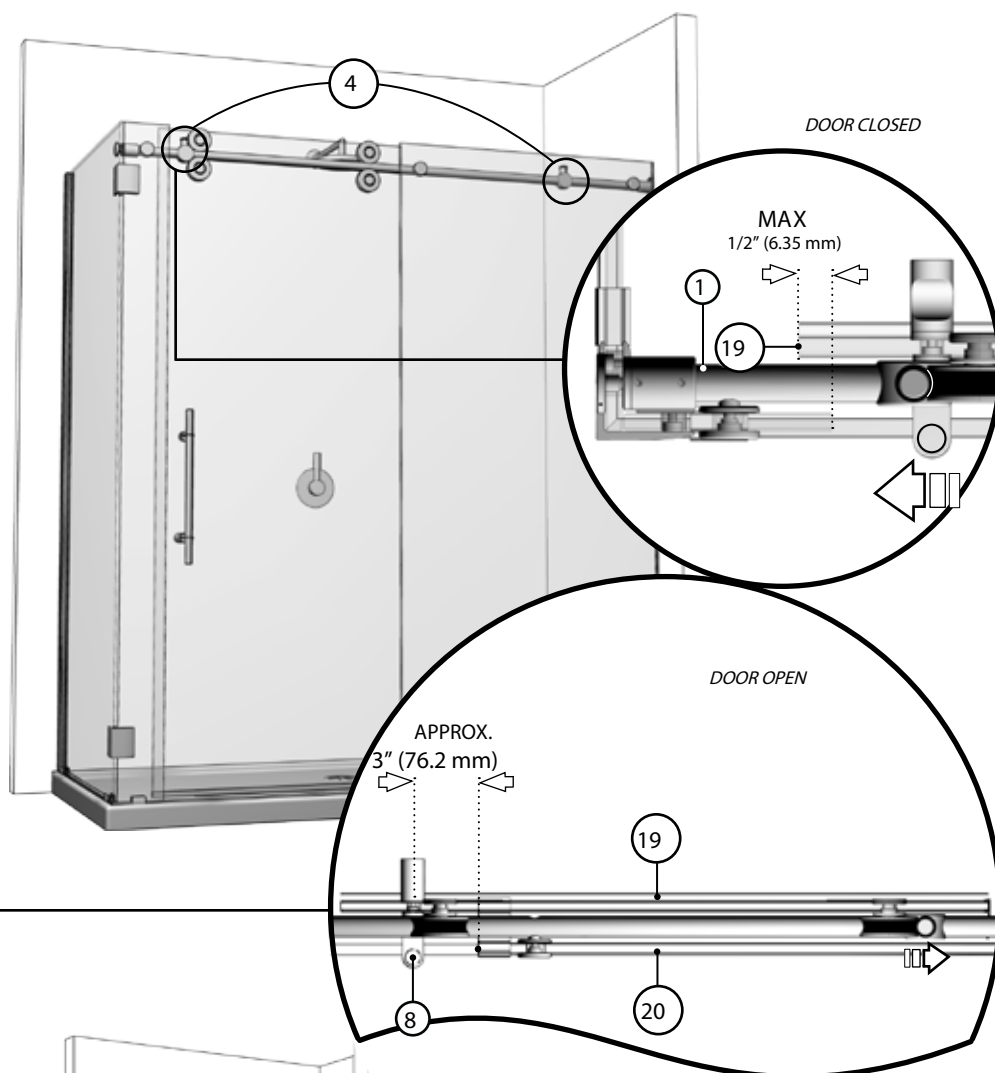
### 13

*Install door side gasket (11) onto sliding door panel (19).*



## 12 STOPPERS

Adjust the position of the stoppers (4) so as to ensure a maximum opening and closing range.



## 13 SILICONE

Apply silicone (S) between the bottom of the fixed panel and the threshold of the base. Silicone application along the length of the threshold is also suggested. In both cases, it is done from the outside of the shower area.

