

**P-DRC1Y**  
**OWNER'S MANUAL**

Alumax  
**PIPELINE**

**SHOWER ENCLOSURES**



**2 PEOPLE REQUIRED**

06.10



**IT IS MANDATORY TO HAVE A WALL STUD ON EACH SIDE OF THE SHOWER UNIT TO SECURELY FASTEN THE RAIL TO THE WALLS.**

P009

## TABLE OF CONTENTS

CONFIGURATIONS AND PARTS LISTING .....	3,4,5,6
PROVIDED HARDWARE .....	7
REQUIRED TOOLS AND MATERIALS .....	7
DOOR PANEL PLACEMENT .....	8
COMPONENTS INSTALLATION .....	8
FIXED PANEL AND RETENTION GASKET .....	9
FIXED PANEL PLACEMENT .....	10,11,12
TOP ROLLERS INSTALLATION .....	12
DOOR PANEL PLACEMENT .....	13
BOTTOM ROLLERS INSTALLATION .....	13
STRAIGHT HANDLE .....	14
GASKETS INSTALLATION .....	14
STOPPERS ADJUSTMENT .....	15
SILICONE .....	15

## GENERAL INSTRUCTIONS

- Read this manual carefully and completely before proceeding.
- Product specifications are subject to change without notice. Use the installation instructions supplied with the product.

### ● SAFETY

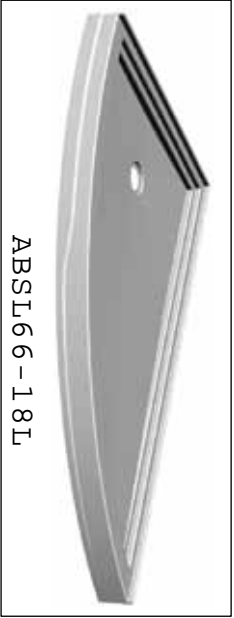
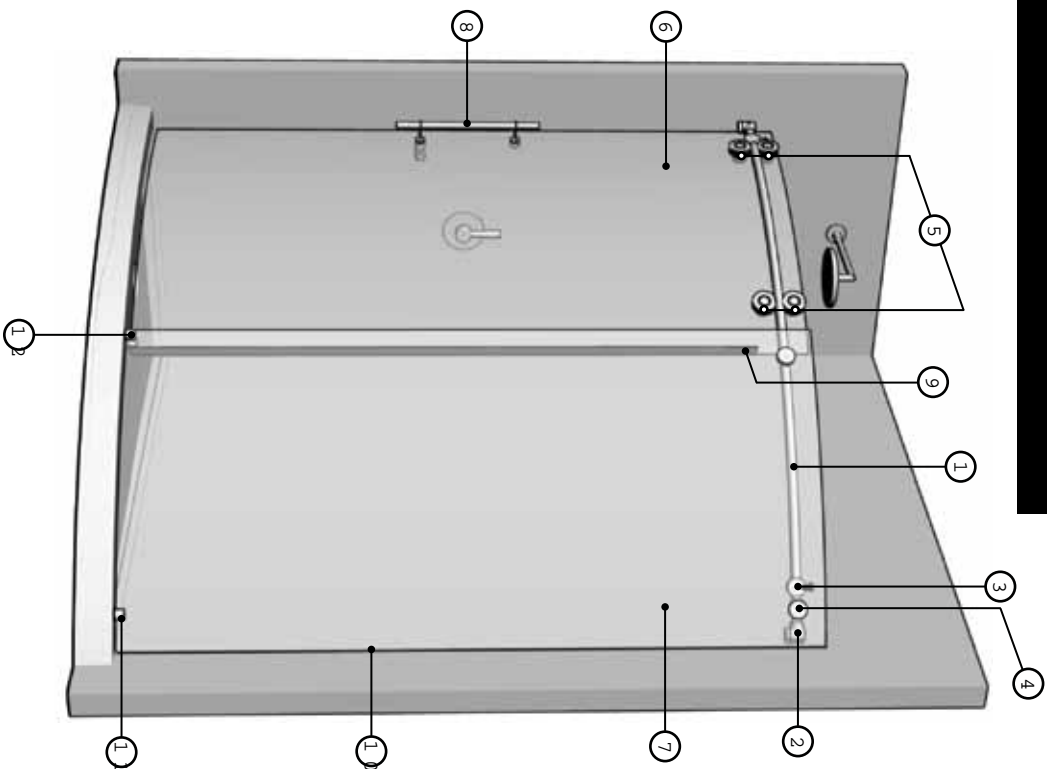
- It is recommended that you wear safety glasses at all times during the installation.
- At all times, 2 people are required for this installation.

### ● WATERPROOFING

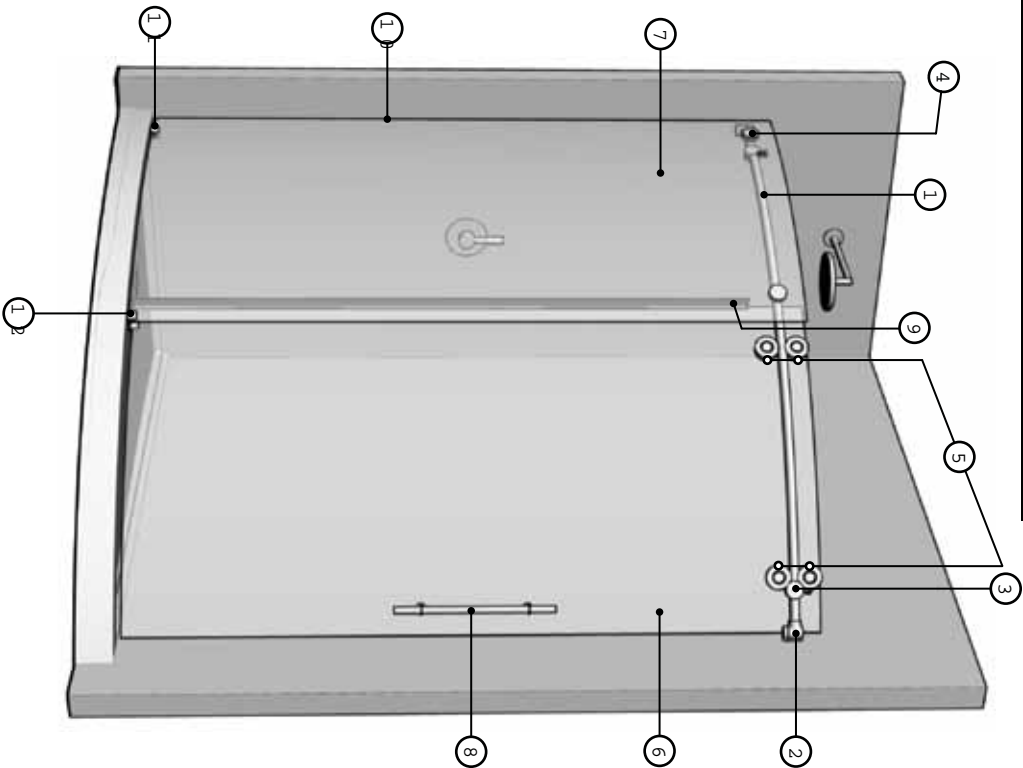
- No sealant is required inside the shower.
- All models are equipped with transparent sealing gaskets.
- For models with wall jambs, if your shower door is to be installed over ceramic tiles, the tiles should lay completely under the wall jambs.

### ● MAINTENANCE

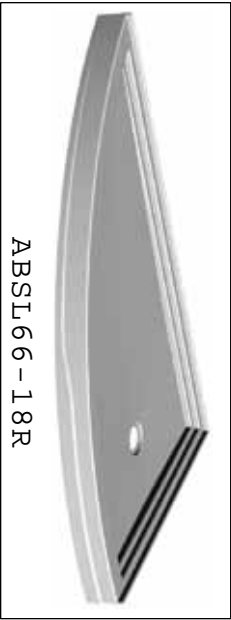
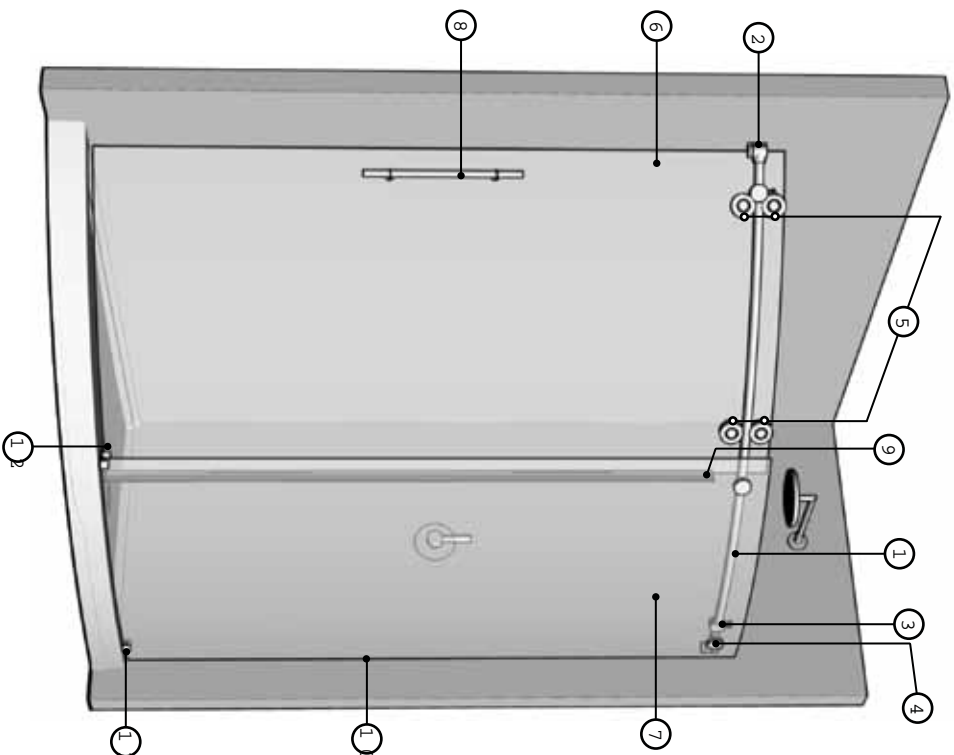
- Never use scouring powder pads or sharp instruments on metal pieces or glass panels.
- An occasional wiping down with a mild soap diluted in water is all that is needed to keep the panels and aluminum parts looking new.
- We recommend wiping the glass panels with a squeegee after each use.



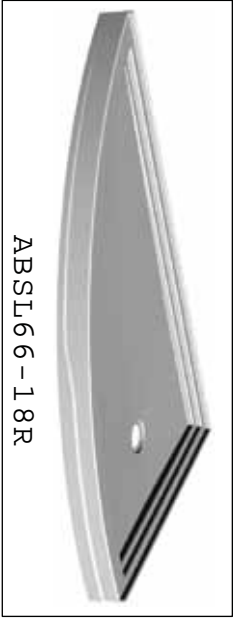
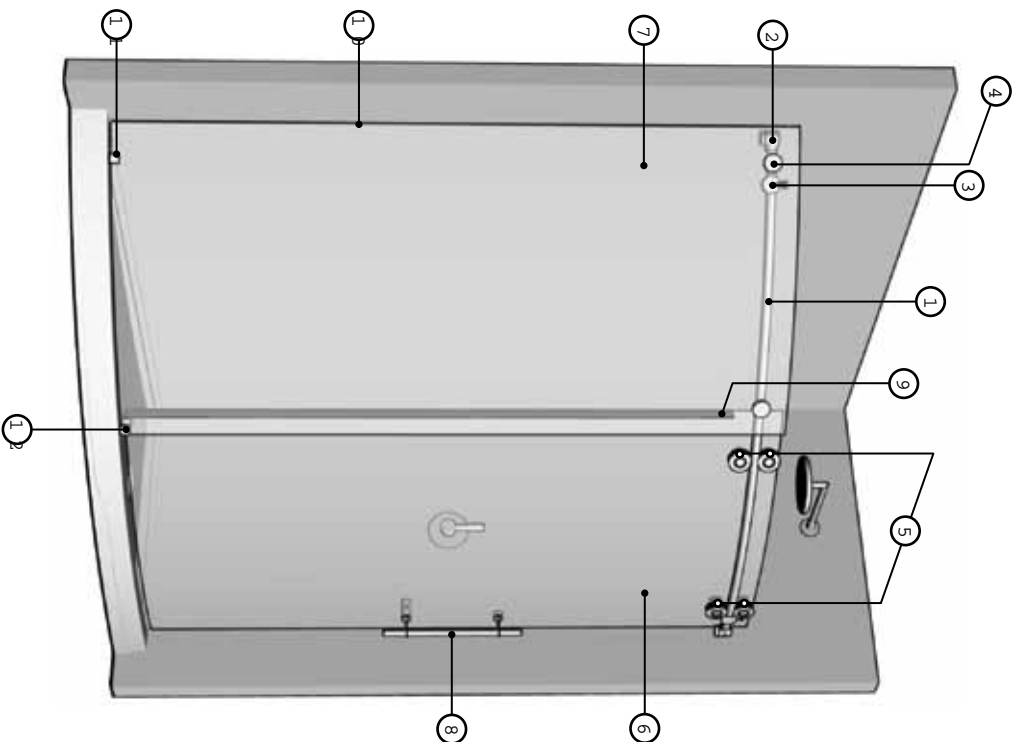
ITEM		PARTS	QTY
1	RUNNING RAIL Ø1.00" (25.4mm)		1
2	WALL BRACKET		2
3	STOPPERS		2
4	GLASS FASTENER		2
5T	WIN ROLLER		2
6	SLIDING DOOR PANEL		1
7	FIXED PANEL		1
8	STRAIGHT HANDLE		1
9	(PG) DOOR GASKET		1
10	FIXED PANEL GASKET		1
11	BOTTOM GLASS CLIP		1
12	BOTTOM GUIDE		1



ITEM		PARTS	QTY
1	RUNNING RAIL Ø1.00" (25.4mm)		1
2	WALL BRACKET		2
3	STOPPERS		2
4	GLASS FASTENER		2
5T	WIN ROLLER		2
6	SLIDING DOOR PANEL		1
7	FIXED PANEL		1
8	STRAIGHT HANDLE		1
9	(PC) DOOR GASKET		1
10	FIXED PANEL GASKET		1
11	BOTTOM GLASS CLIP		1
12	BOTTOM GUIDE		1

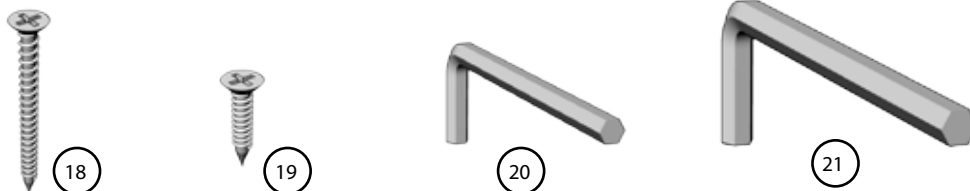


ITEM		PARTS	QTY
1	RUNNING RAIL Ø1.00" (25.4mm)		1
2	WALL BRACKET		2
3	STOPPERS		2
4	GLASS FASTENER		2
5T	WIN ROLLER		2
6	SLIDING DOOR PANEL		1
7	FIXED PANEL		1
8	STRAIGHT HANDLE		1
9	(PC) DOOR GASKET		1
10	FIXED PANEL GASKET		1
11	BOTTOM GLASS CLIP		1
12	BOTTOM GUIDE		1



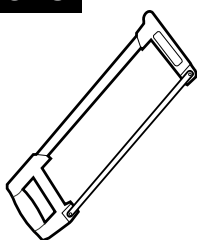
ITEM		PARTS	QTY
1	RUNNING RAIL Ø1.00" (25.4mm)		1
2	WALL BRACKET		2
3	STOPPERS		2
4	GLASS FASTENER		2
5T	WIN ROLLER		2
6	SLIDING DOOR PANEL		1
7	FIXED PANEL		1
8	STRAIGHT HANDLE		1
9	(PC) DOOR GASKET		1
10	FIXED PANEL GASKET		1
11	BOTTOM GLASS CLIP		1
12	BOTTOM GUIDE		1

## HARDWARE



ITEM	HARDWARE	QTY
18	#10-2 1/2 SCREW	4
19	#6-1 SCREW	2
20	HEX KEY 3mm	1
21	HEX KEY 6mm (7/32")	1

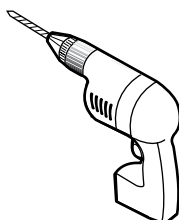
## OUTILS / TOOLS



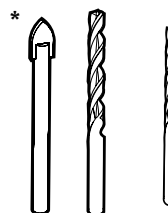
HACKSAW



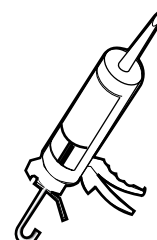
SCREWDRIVERS



DRILL



1/4" & 1/8" DRILL BITS

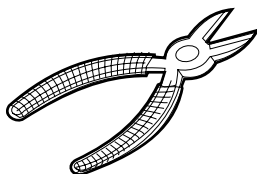


SILICONE

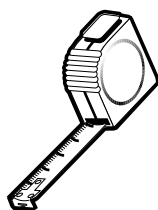
*If the shower panels are to be assembled on ceramic tiles, use a 1/4" drill bit for ceramic tiles.*



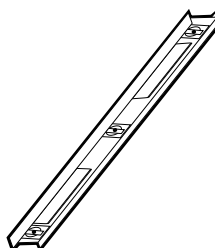
PENCIL



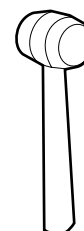
CUTTING PLIER



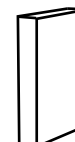
TAPE MEASURE



LEVEL



MALLET



BLOCK

LR



BEGIN THE INSTALLATION PROCEDURE AT PAGE 9.

RL



BEGIN THE INSTALLATION PREOCEDURE AT PAGE 9.  
CONSIDER THAT THE ILLUSTRATIONS ARE RELEVANT TO  
MODEL LR. AS SUCH MIRRORING THE  
ILLUSTRATIONS IS NECESSARY FOR THIS UNIT.

LL



BEGIN THE INSTALLATION PROCEDURE AT PAGE 18.

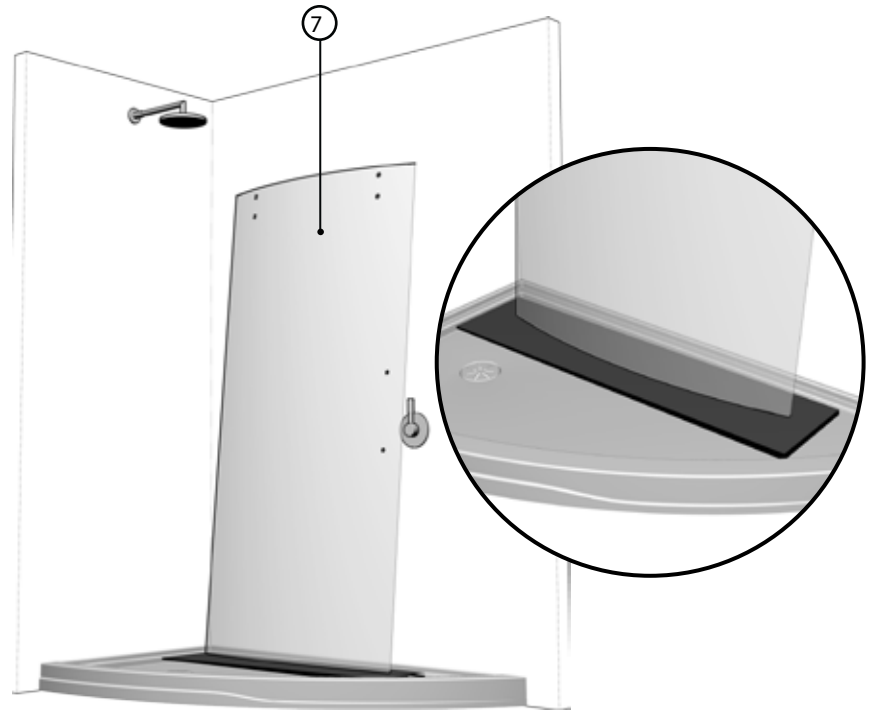
RR



BEGIN THE INSTALLATION PROCEDURE AT PAGE 18.  
CONSIDER THAT THE ILLUSTRATIONS ARE RELEVANT  
TO MODEL RR. AS SUCH MIRRORING THE  
ILLUSTRATIONS IS NECESSARY FOR THIS UNIT.

## 1 DOOR PLACEMENT

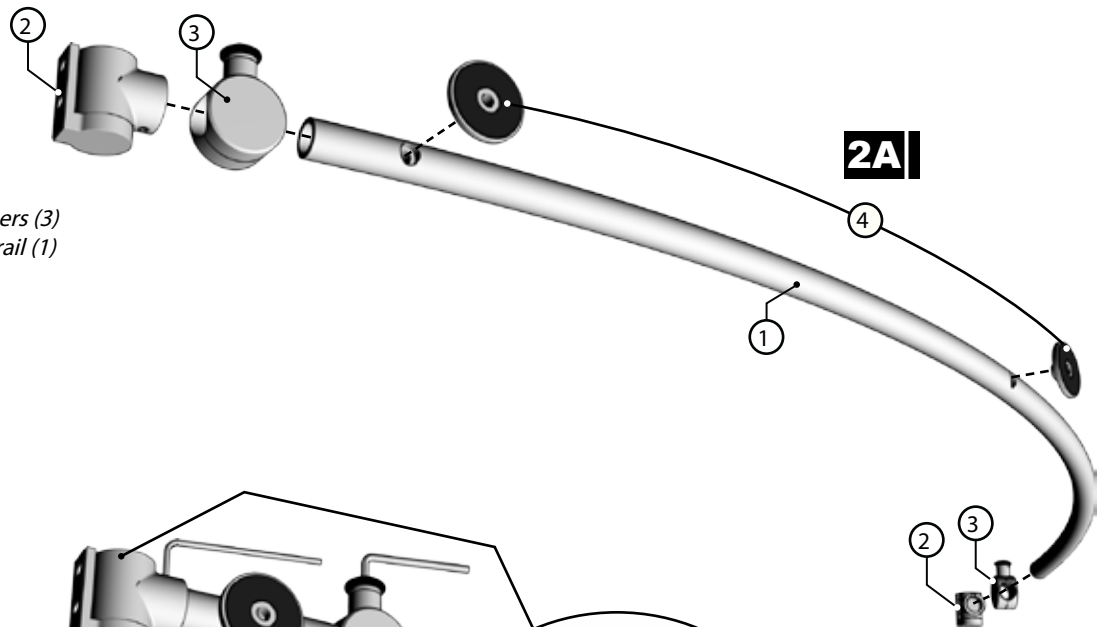
Place door panel (7) within the showering area to simplify following installation procedures. Ensure placing the panel onto a cushioned surface, such as a towel or cardboard, to prevent damage either to the panel or the base.



## 2 COMPONENTS INSTALLATION

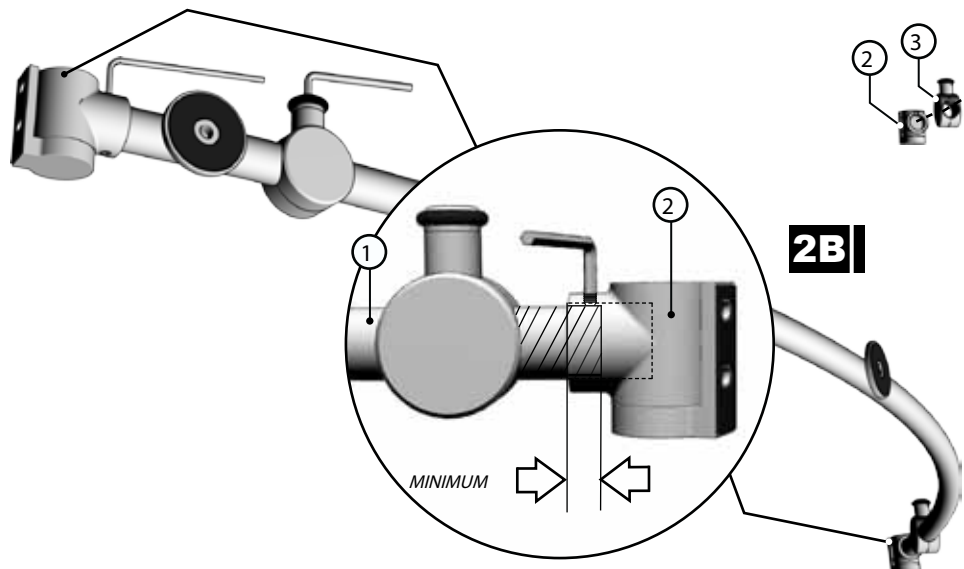
### 2A

Position the glass fasteners (4), stoppers (3) and wall brackets (2) on the running rail (1) as illustrated.



### 2B

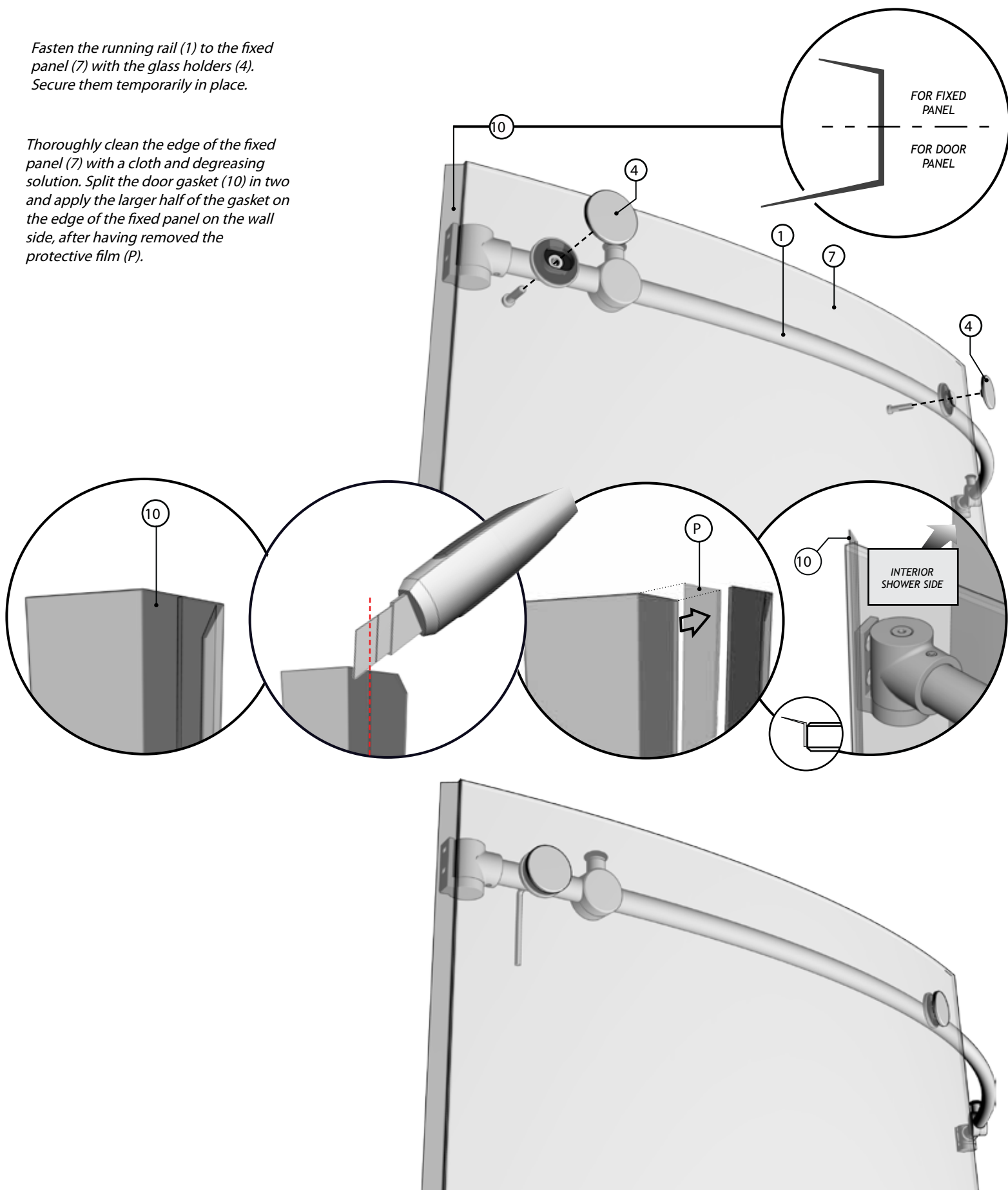
Temporarily secure the mentioned components. The running rail (1) must be minimally inserted into the wall bracket support blocks (2). Ensure that the set screws grab the running rail (1).



### 3 FIXED PANEL AND RETENTION GASKET

Fasten the running rail (1) to the fixed panel (7) with the glass holders (4). Secure them temporarily in place.

Thoroughly clean the edge of the fixed panel (7) with a cloth and degreasing solution. Split the door gasket (10) in two and apply the larger half of the gasket on the edge of the fixed panel on the wall side, after having removed the protective film (P).



## 4 FIXED PANEL PLACEMENT

### 4A

Begin by removing the bottom glass clip's and bottom guide's fixed panel retainers (11) (12) from their assembly.

### 4B

Position the bottom glass clip (11) and bottom guide (12) on fixed panel (7) as illustrated.

### 4C

Ensure that the running rail (1) is at the highest possible position in reference to the holes of the fixed panel (7). Adjust the fixed panel (7), by way of the running rail (1), so as to force the gasket (10) against the wall. The distance between the fixed panel and wall should approximately be  $3/16"$ .



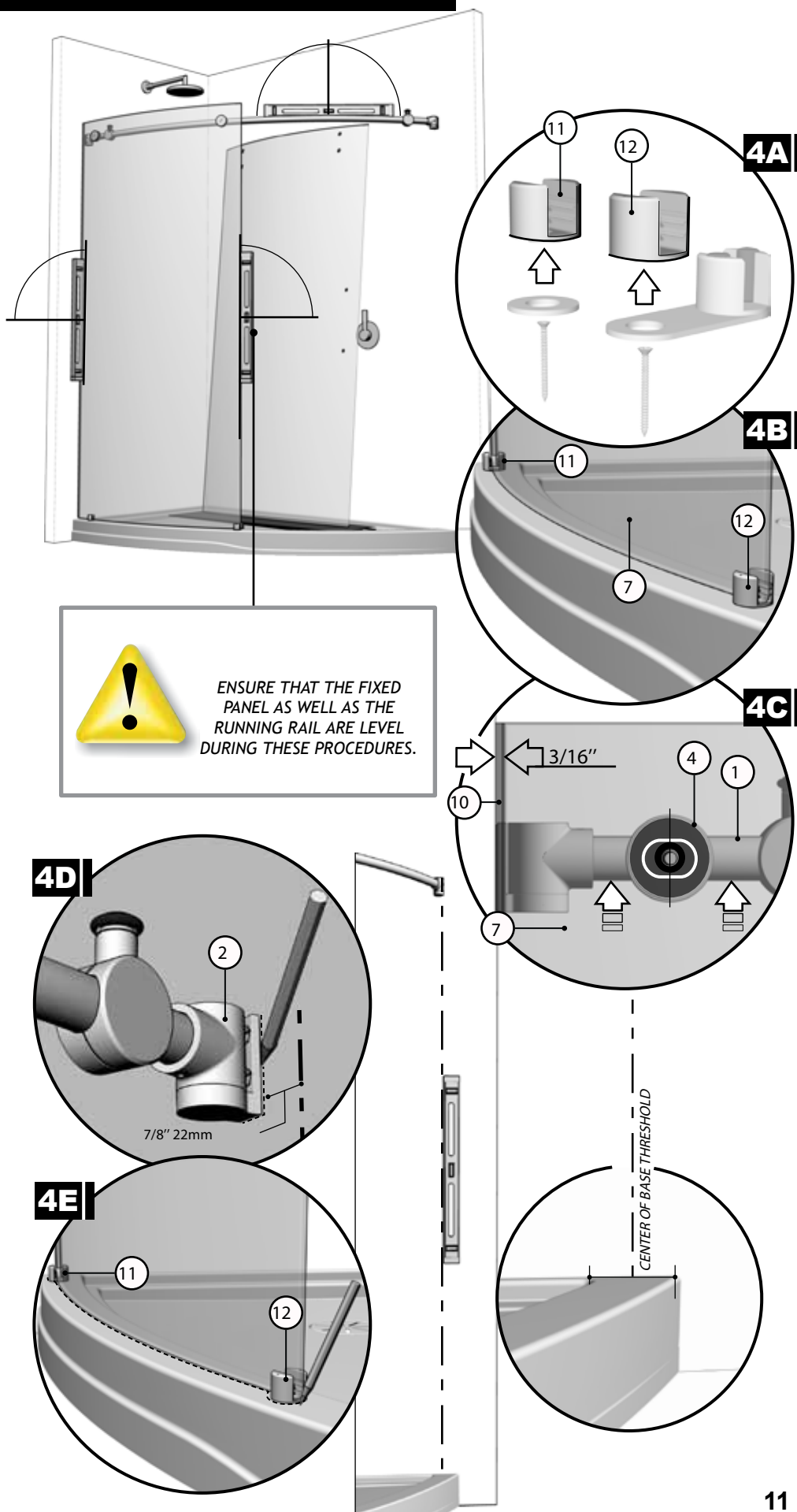
ENSURE THAT THE FIXED PANEL AS WELL AS THE RUNNING RAIL ARE LEVEL DURING THESE PROCEDURES.

### 4D

Mark the locations for the wall brackets (2) on the walls on both sides of shower. The door side wall bracket (2) should be placed at  $7/8"$  (22mm) from the center line of the base threshold.

### 4E

Mark the fixed panel retainers' locations on the base (11) (12).



## 5 CONTINUED

### 5A

Remove the fixed panel assembly (7) and carefully lean it to the side, ensure that it is placed on a protective surface. Moreover, ensure that the wall bracket supports (2) are removed to proceed.

### 5B

Drill holes in walls with a drill bit, intended for ceramic tiles, through to the wall stud.

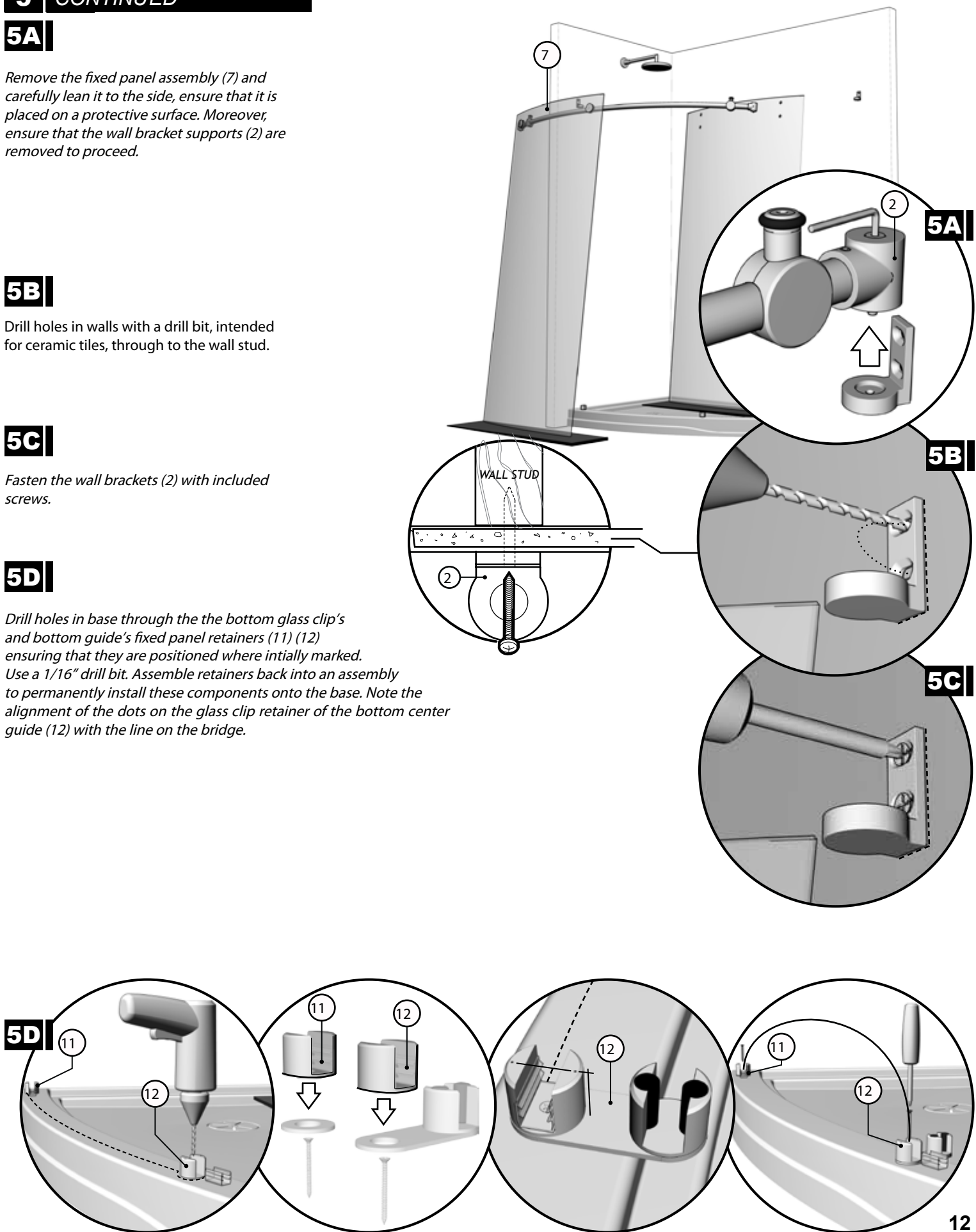
### 5C

Fasten the wall brackets (2) with included screws.

### 5D

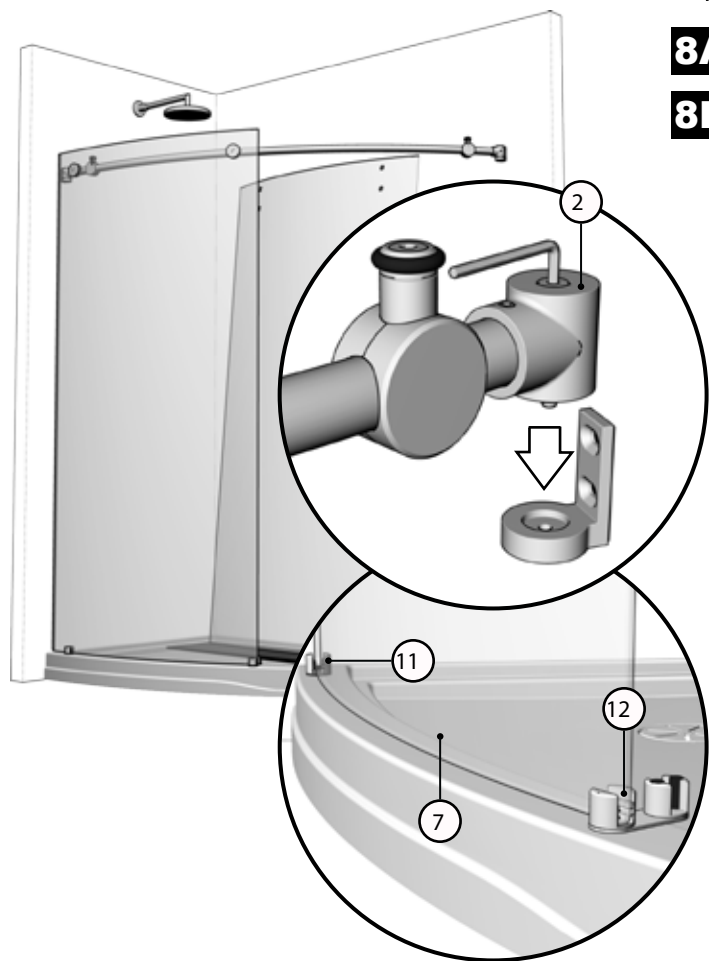
Drill holes in base through the the bottom glass clip's and bottom guide's fixed panel retainers (11) (12) ensuring that they are positioned where intially marked. Use a 1/16" drill bit. Assemble retainers back into an assembly to permanently install these components onto the base. Note the alignment of the dots on the glass clip retainer of the bottom center guide (12) with the line on the bridge.

### 5D



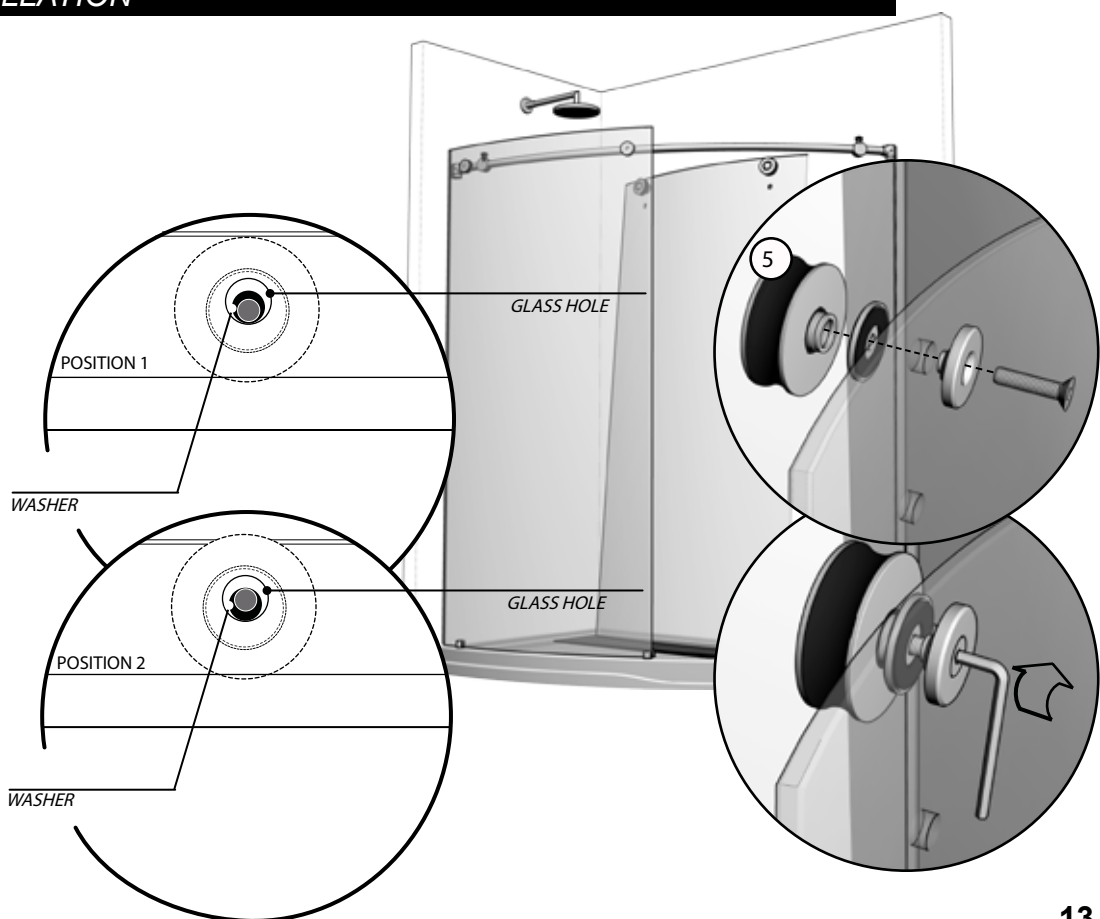
## 6 CONTINUED

Reposition the fixed panel assembly in place, ensuring that the fixed panel (7) nests within the bottom glass clip retainers (11) (12) and that the wall bracket blocks (2) insert themselves within their back plates. Permanently secure the wall brackets by way of the socket cap screws, as illustrated.

**8A****8B**

## 7 TOP ROLLERS INSTALLATION

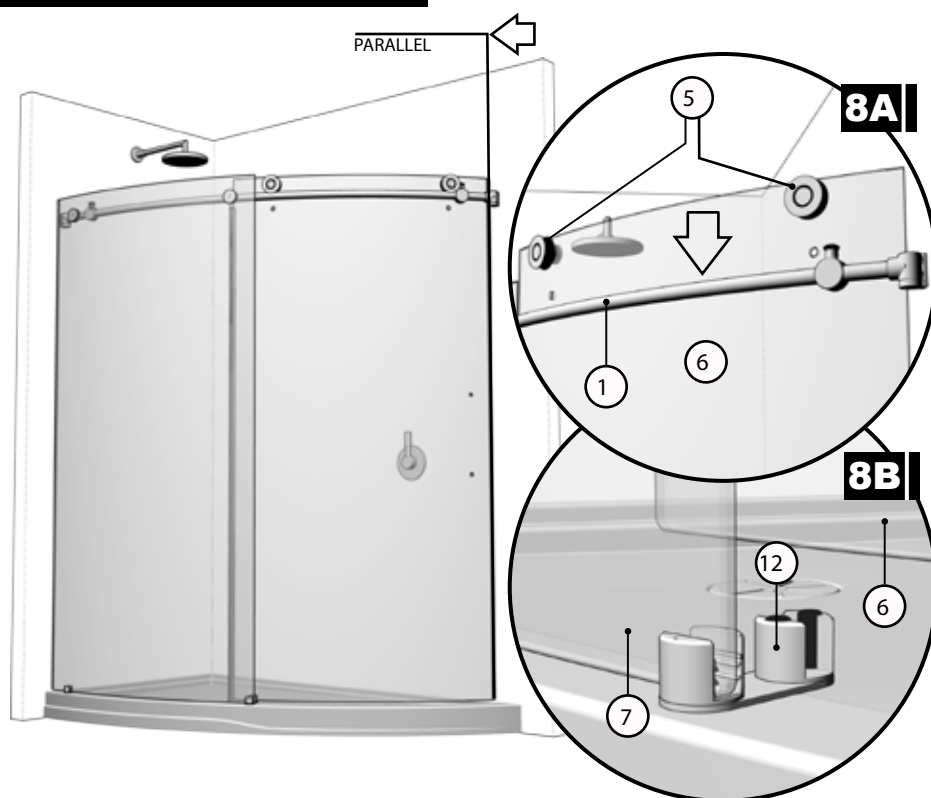
Assemble a set of double rollers (5) to the door panel's (6) top holes. Note the position of the excentric washers in the illustrations. The washers are to be oriented to Position 2 to ensure that the door sits at its lowest position, recommended for optimal water retention.



## 8 DOOR PANEL PLACEMENT

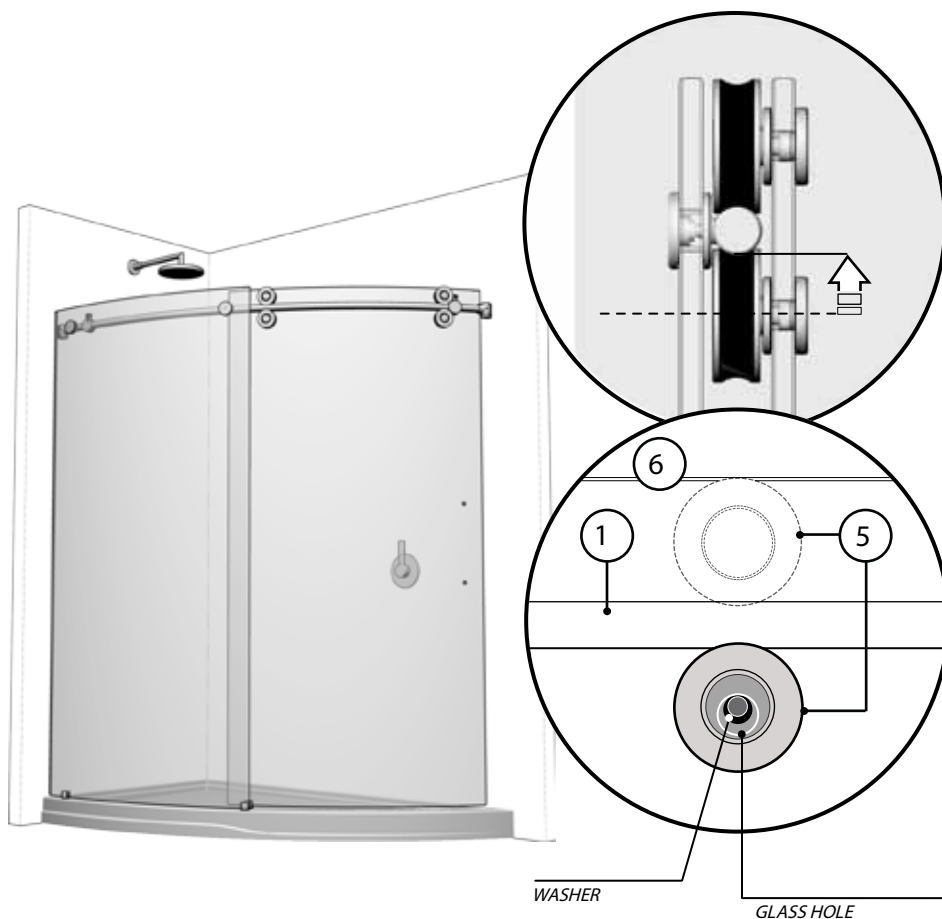
Install door panel (6), ensuring that the rollers (5) are positioned over the running rail (1). Through the use of the nonconcentric washers, adjust rollers so that the sliding door panel (6) is as parallel to the wall as possible.

Ensure that the door panel (6) is placed within the bottom center guide (12). If the bottom of the door panel and the guide create rubbing, adjust the excentric rollers to Position 1 of Step 7.



## 9 BOTTOM ROLLERS INSTALLATION

Install the set of double rollers (5) to the bottom holes of the door panel (6), making sure that they are tangent to the running rail (1) by way of the nonconcentric washers.

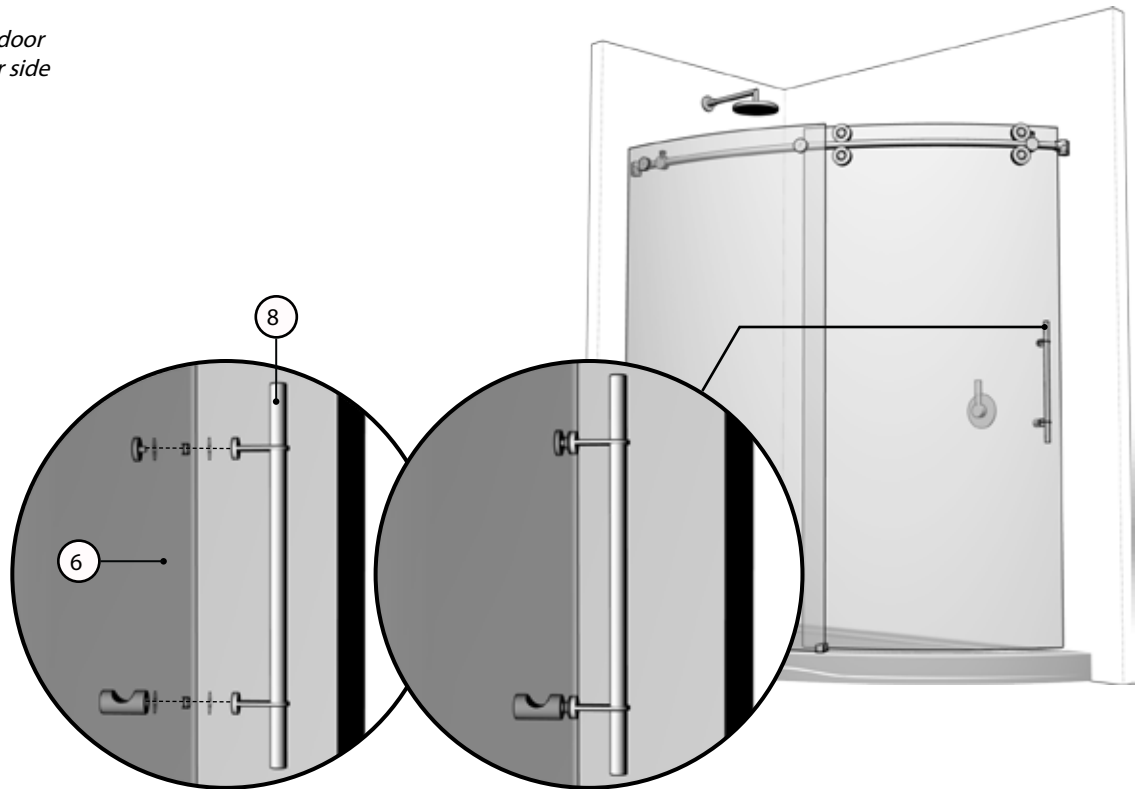


WASHER

GLASS HOLE

## 10 STRAIGHT HANDLE

Install straight handle (8) onto sliding door (6). Ensure that clear washers on either side of glass are installed.



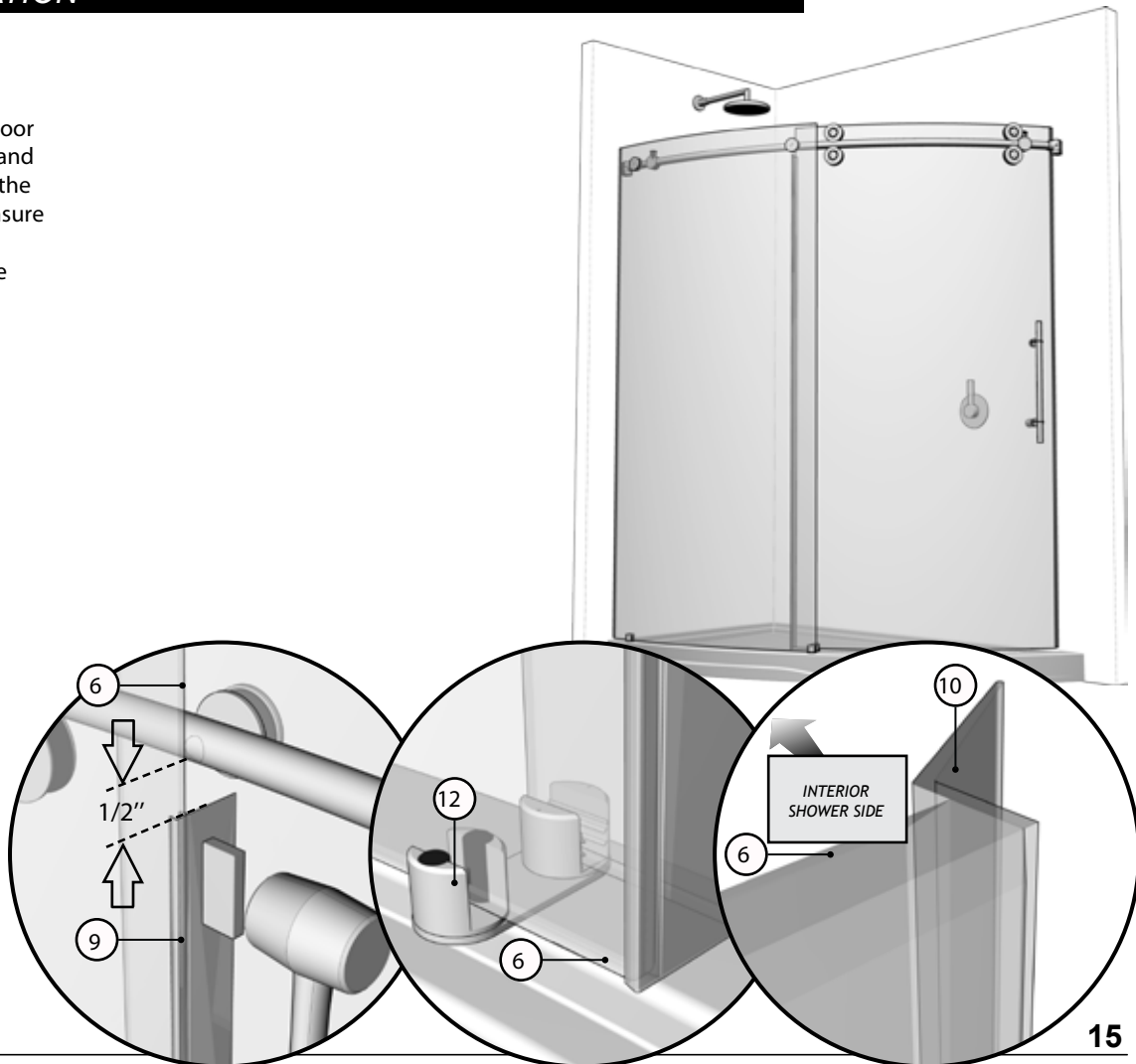
## 11 GASKETS INSTALLATION

### 11A

Install the door mid-gasket (9) to the door panel (6) by way of a protective block and mallet. Start from the bottom edge of the door panel and work the gasket up. Ensure that a 1/2" gap remains between the running rail (1) and the top edge of the mid-gasket (9) for clearance.

### 11B

Thoroughly clean the edge of the sliding door (6), closest to the side where the handle is located with a cloth and degreasing solution. Apply the door gasket (other half of gasket from Step 1) (10) to this edge of the sliding door (6).



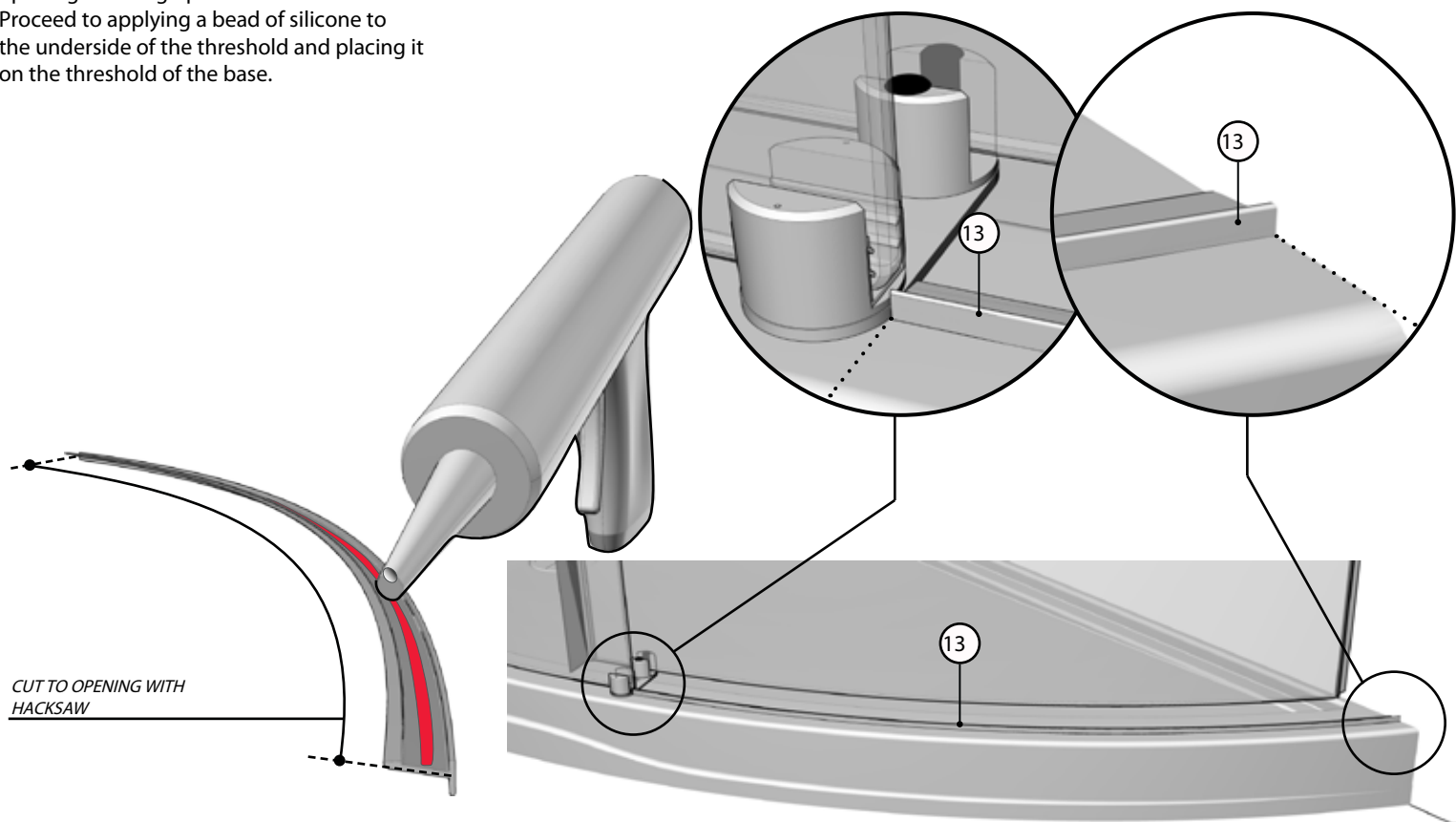
## 12 STOPPERS ADJUSTMENT

*Adjust the position of the stoppers (3) so as to ensure a maximum opening and closing range. Ensure that the sliding door gasket (10) is forced against the wall when the door is closed.*



## 13 THRESHOLD INSTALLATION

Cut the threshold (13) to the necessary opening ensuring optimal water retention. Proceed to applying a bead of silicone to the underside of the threshold and placing it on the threshold of the base.

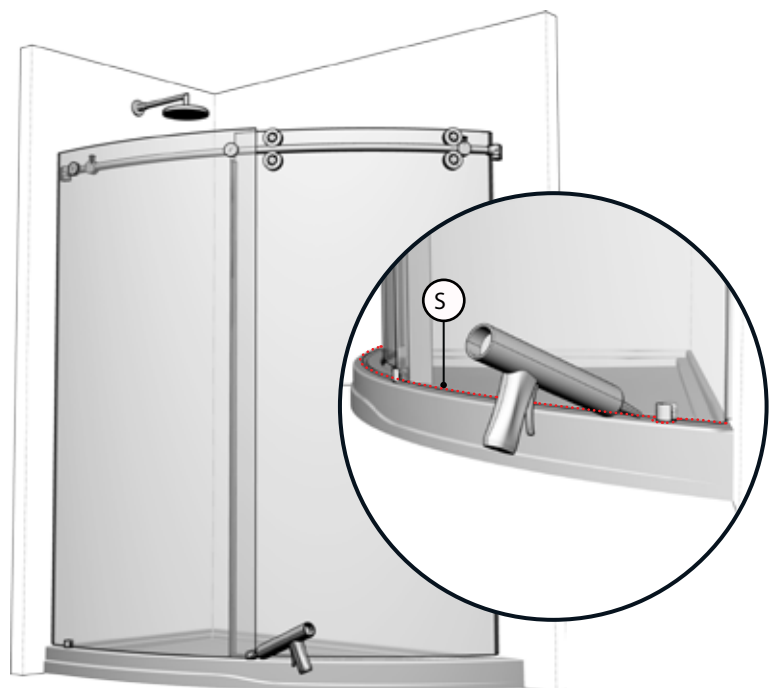


## 14 SILICONE

Apply silicone (S) between the bottom of the fixed panel and the threshold of the base. This is done from the outside of the shower area.

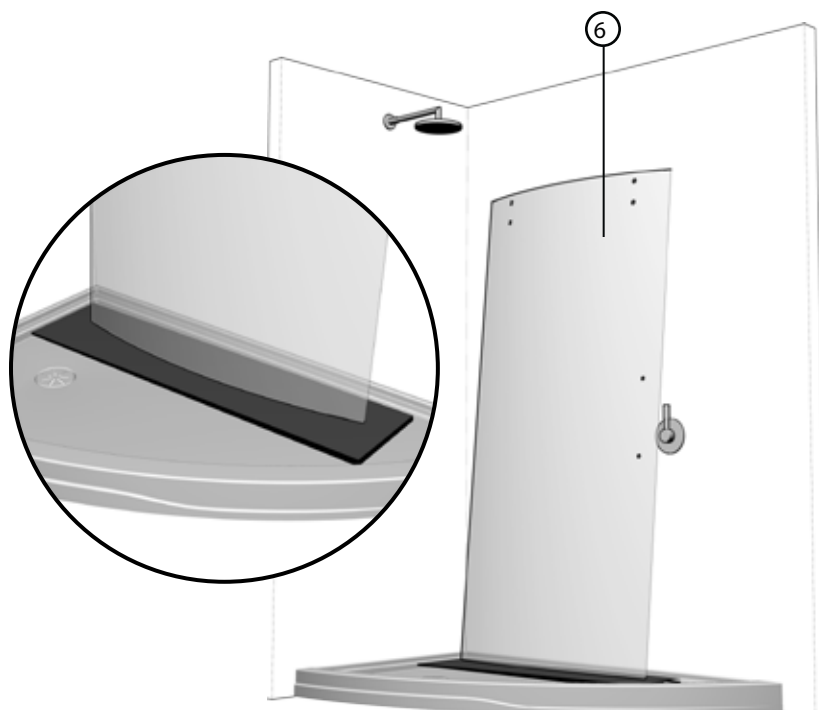


**24** HOURS



## 1 DOOR PLACEMENT

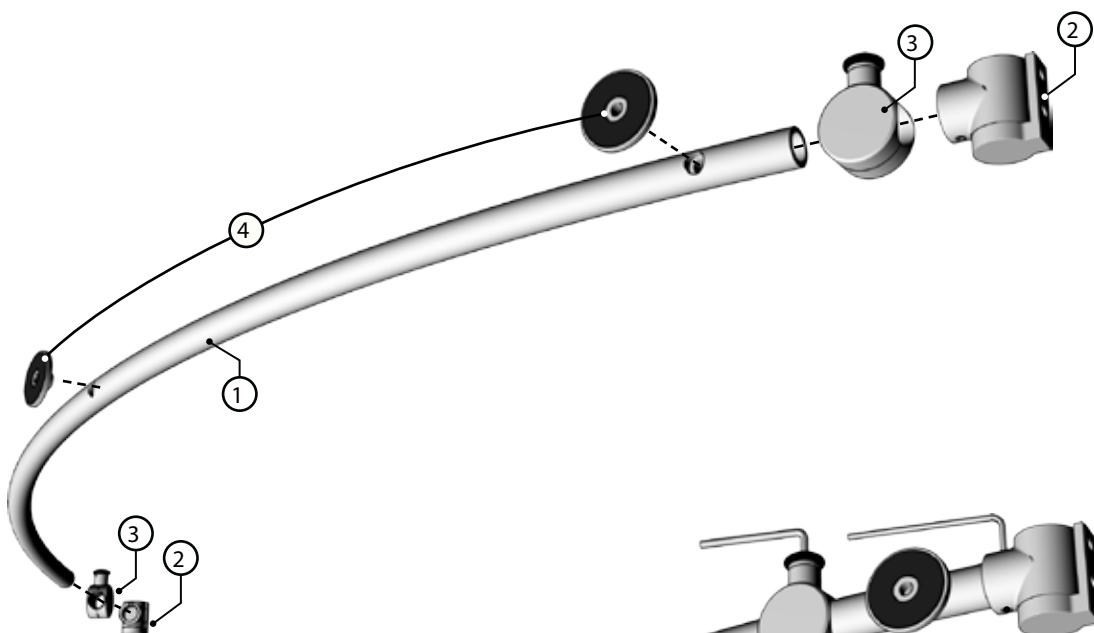
Place door panel (6) inside tub to simplify following installation procedures. Ensure placing the panel onto a cushioned surface, such as a towel or cardboard, to prevent damage either to the panel or the tub.



## 2 COMPONENTS INSTALLATION

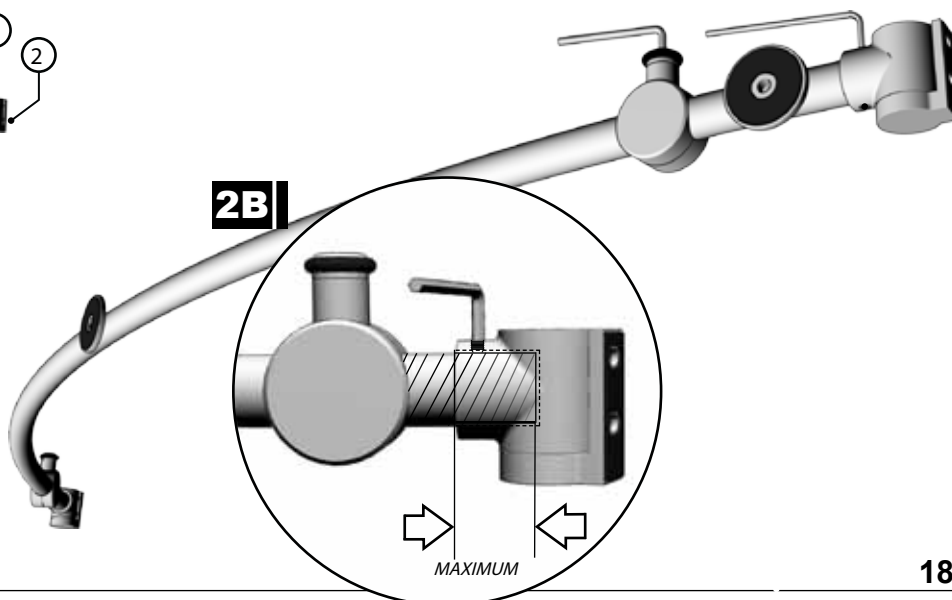
### 2A

Fasten the running rail (1) to the fixed panel (7) with the glass holders (4). Secure them temporarily in place.



### 2B

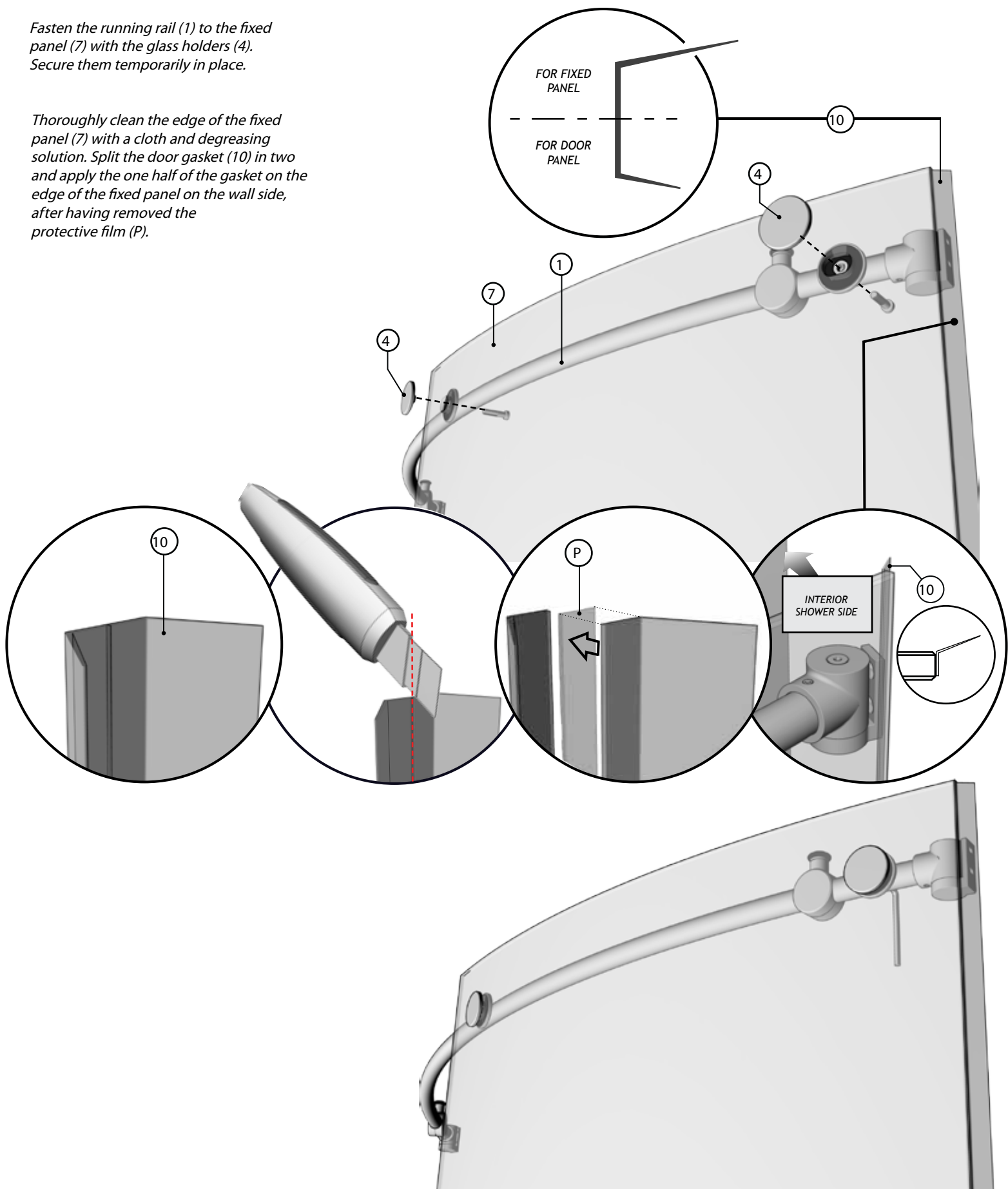
Fasten the running rail (1) to the fixed panel (7) with the glass holders (4). Secure them temporarily in place.



### 3 FIXED PANEL AND RETENTION GASKET

Fasten the running rail (1) to the fixed panel (7) with the glass holders (4). Secure them temporarily in place.

Thoroughly clean the edge of the fixed panel (7) with a cloth and degreasing solution. Split the door gasket (10) in two and apply the one half of the gasket on the edge of the fixed panel on the wall side, after having removed the protective film (P).



## 4 FIXED PANEL PLACEMENT

### 4A

Begin by removing the bottom glass clip's and bottom guide's fixed panel retainers (11) (12) from their assembly.

### 4B

Position the bottom glass clip (11) and bottom guide (12) on fixed panel (7) as

### 4C

Ensure that the running rail (1) is at the highest possible position in reference to the holes of the fixed panel (7). Adjust the fixed panel (7), by way of the running rail (1), so as to force the gasket (10) against the wall. The distance between the fixed panel and wall should approximately be  $3/16"$ .

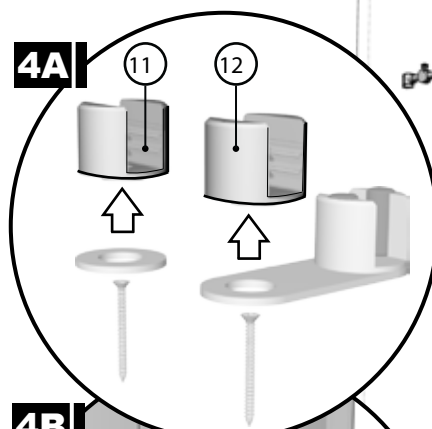
### 4D

Mark the locations for the wall brackets (2) on the walls on both sides of shower. The door side wall bracket (2) should be placed at  $5/16"$  (8mm) from the center line of the base threshold.

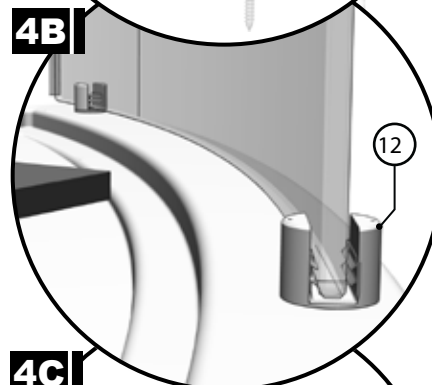
### 4E

Mark the fixed panel retainers' locations on the base (11) (12).

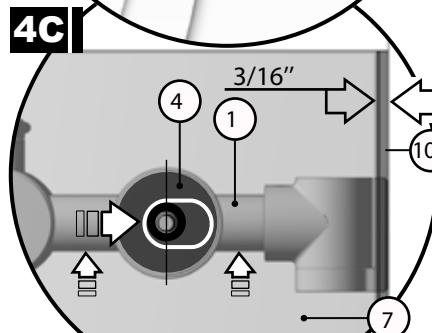
4A



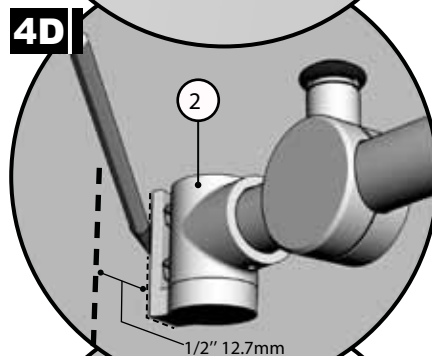
4B



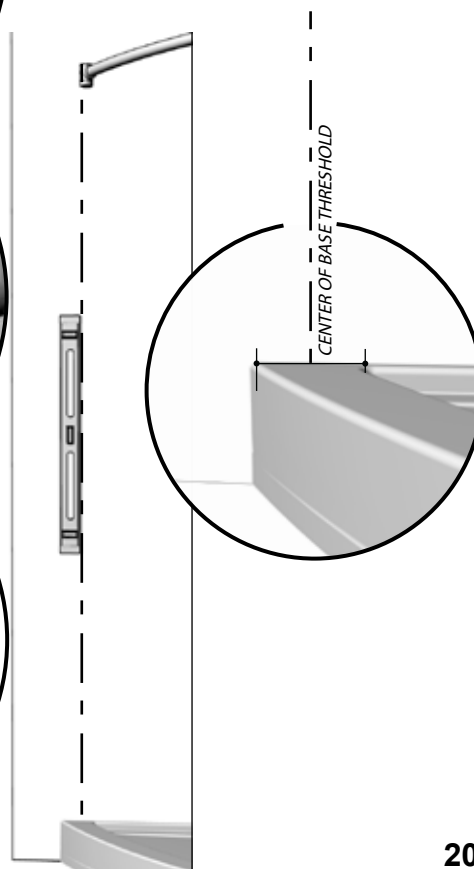
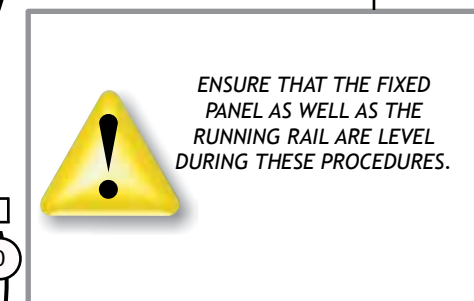
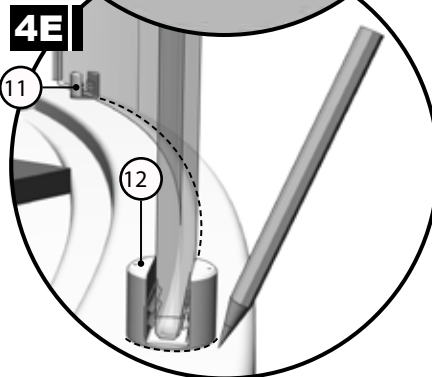
4C



4D



4E

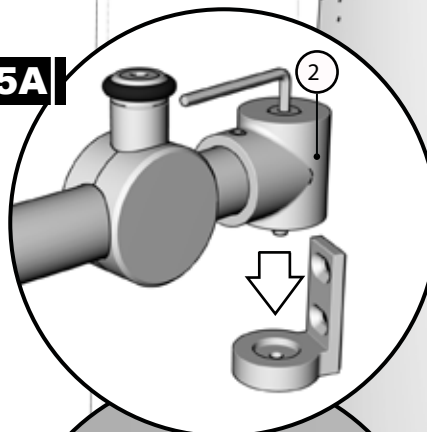


## 5 CONTINUED

### 5A

Remove the fixed panel assembly (7) and carefully lean it to the side, ensure that it is placed on a protective surface. Moreover, ensure that the wall bracket supports (2) are removed to proceed.

### 5A



### 5B

Drill holes in walls with a drill bit, intended for ceramic tiles, through to the wall stud.

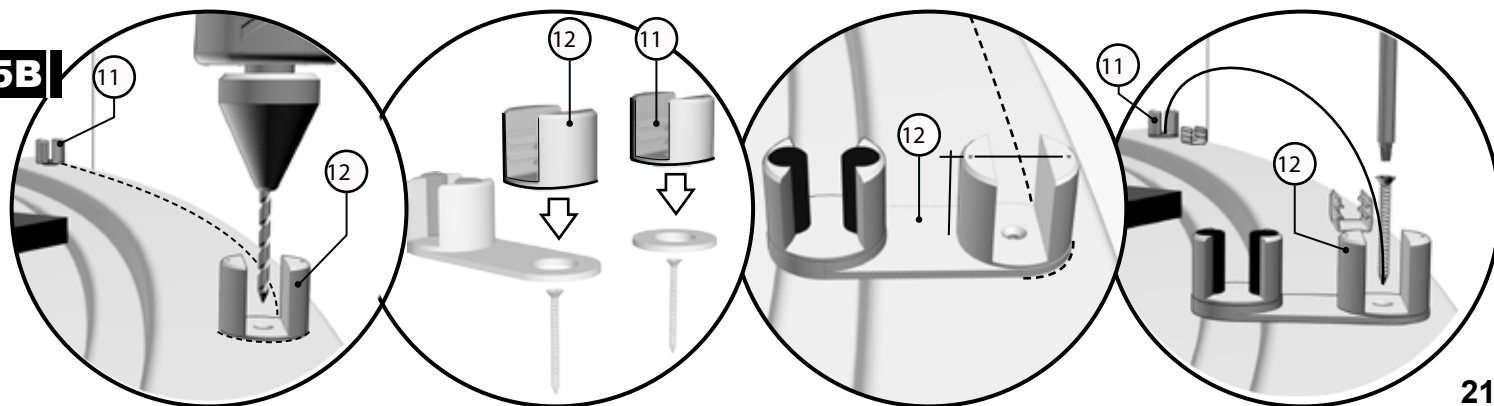
### 5C

Fasten the wall brackets (2) with included screws.

### 5D

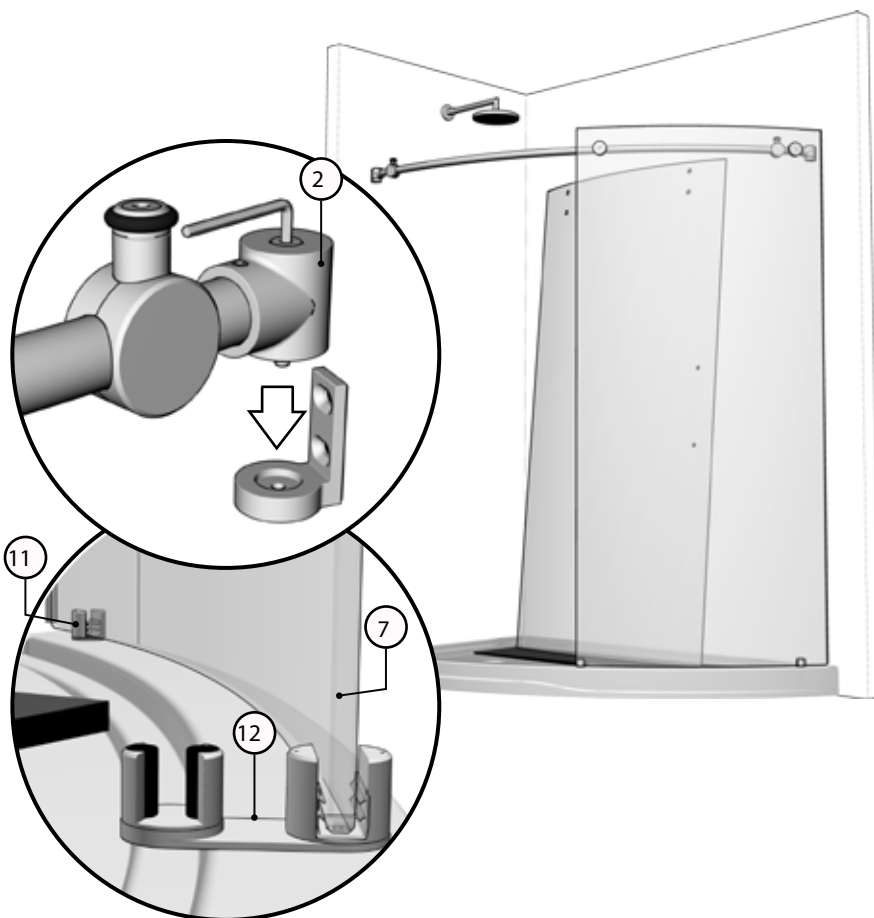
Drill holes in base through the the bottom glass clip's and bottom guide's fixed panel retainers (11) (12) ensuring that they are positioned where intially marked. Use a 1/16" drill bit. Assemble retainers back into an assembly to permanently install these components onto the base. Note the alignment of the dots on the glass clip retainer of the bottom center guide (12) with the line on the bridge.

### 5B



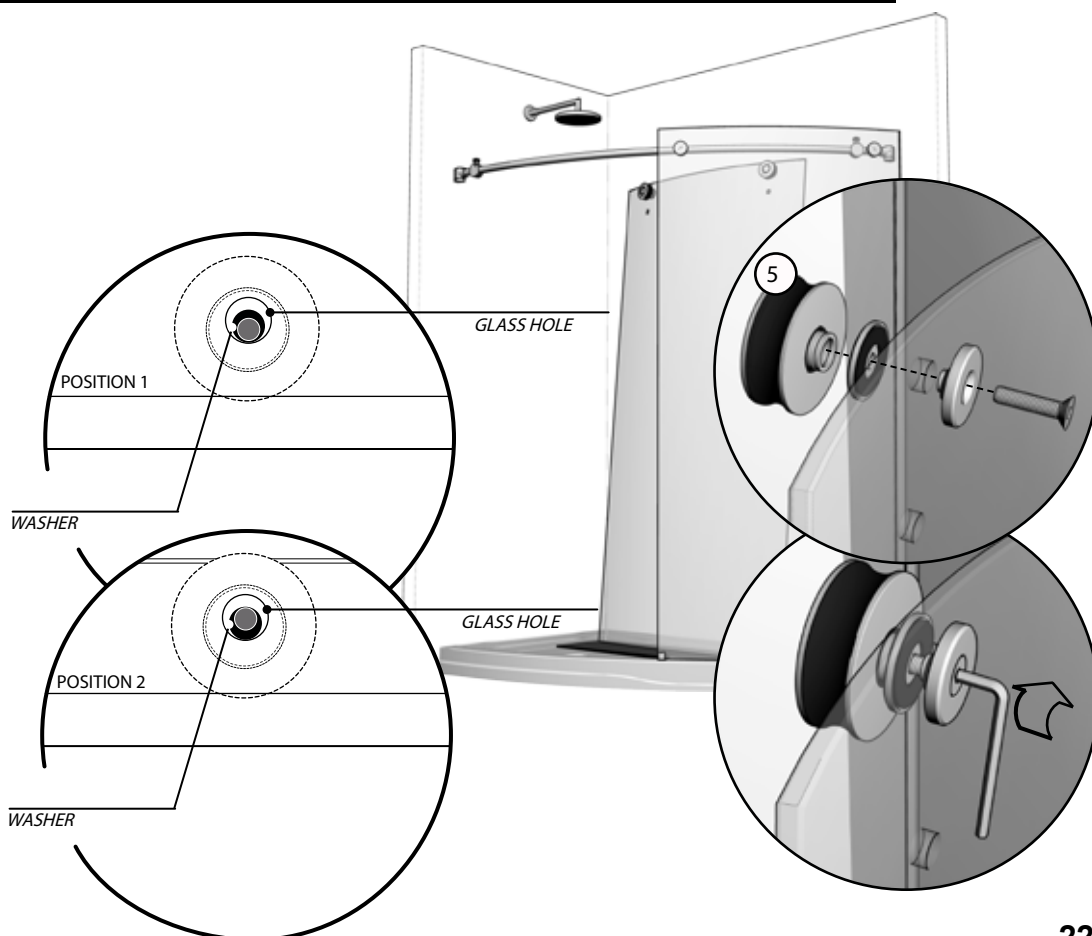
## 6 CONTINUED

Reposition the fixed panel assembly in place, ensuring that the fixed panel (7) nests within the bottom glass clip retainers (11) (12) and that the wall bracket blocks (2) insert themselves within their back plates. Permanently secure the wall brackets by way of the socket screws, as illustrated.



## 7 TOP ROLLERS INSTALLATION

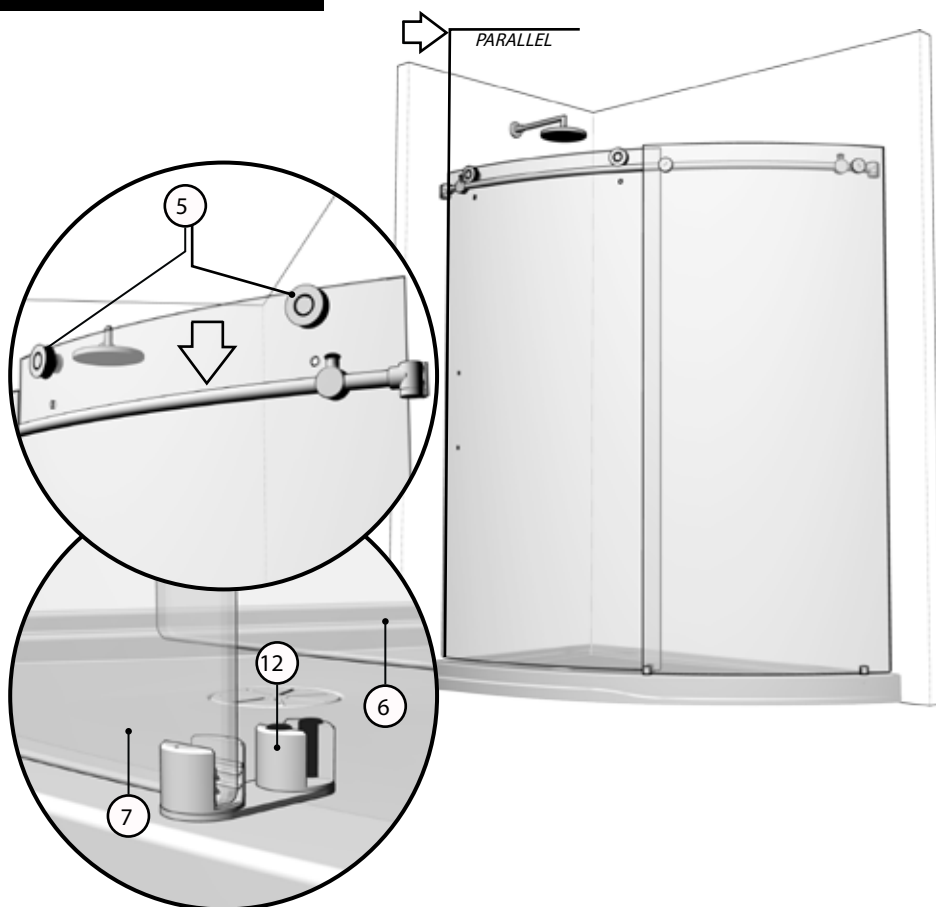
Assemble a set of double rollers (5) to the door panel's (6) top holes. Note the position of the eccentric washers in the illustrations. The washers are to be oriented to Position 2 to ensure that the door sits at its lowest position, recommended for optimal water retention.



## 8 DOOR PLACEMENT

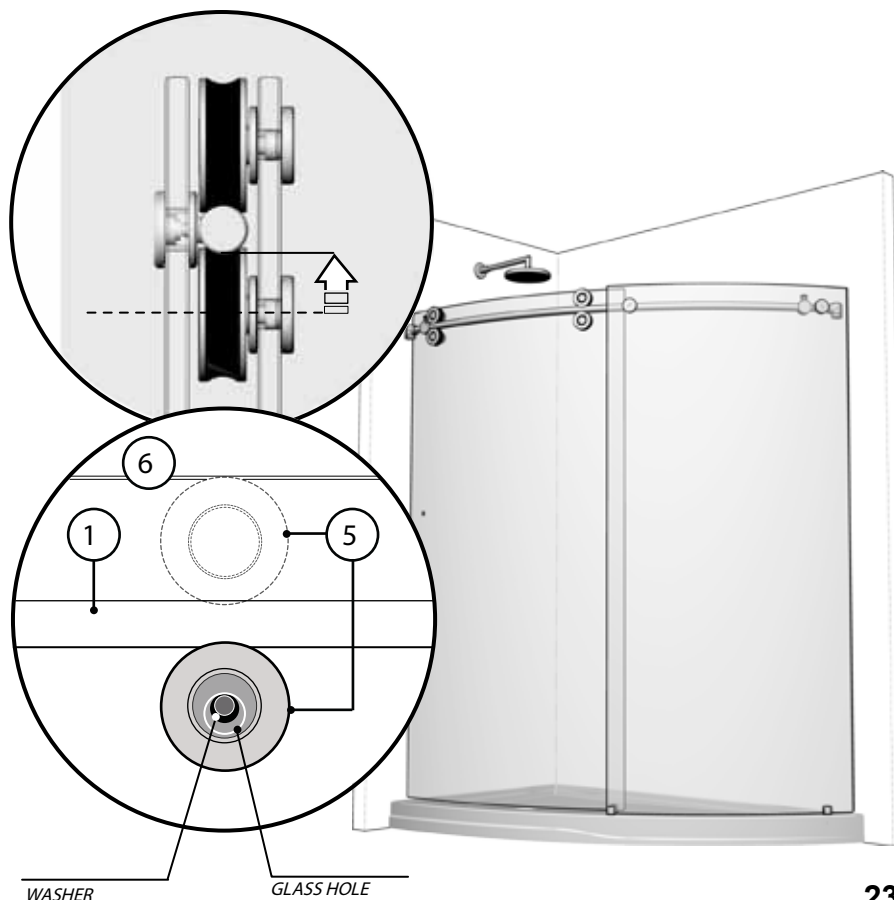
Install door panel (6), ensuring that the rollers (5) are positioned over the running rail (1). Through the use of the nonconcentric washers, adjust rollers so that the sliding door panel (6) is as parallel to the wall as possible.

Ensure that the door panel (6) is placed within the bottom center guide (12). If the bottom of the door panel and the guide create rubbing, adjust the eccentric rollers to Position 1 of Step 7.



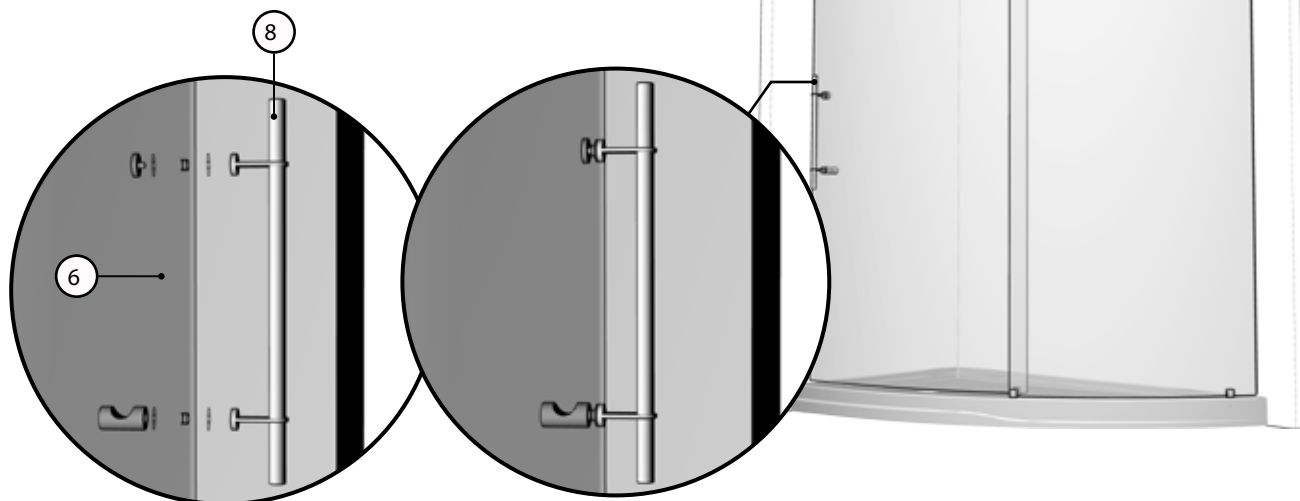
## 9 BOTTOM ROLLERS INSTALLATION

Install the set of double rollers (5) to the bottom holes of the door panel (6), making sure that they are tangent to the running rail (1) by way of the nonconcentric washers.



## 10 HANDLE INSTALLATION

Fasten the running rail (1) to the fixed panel (7) with the glass holders (4).  
Secure them temporarily in place.



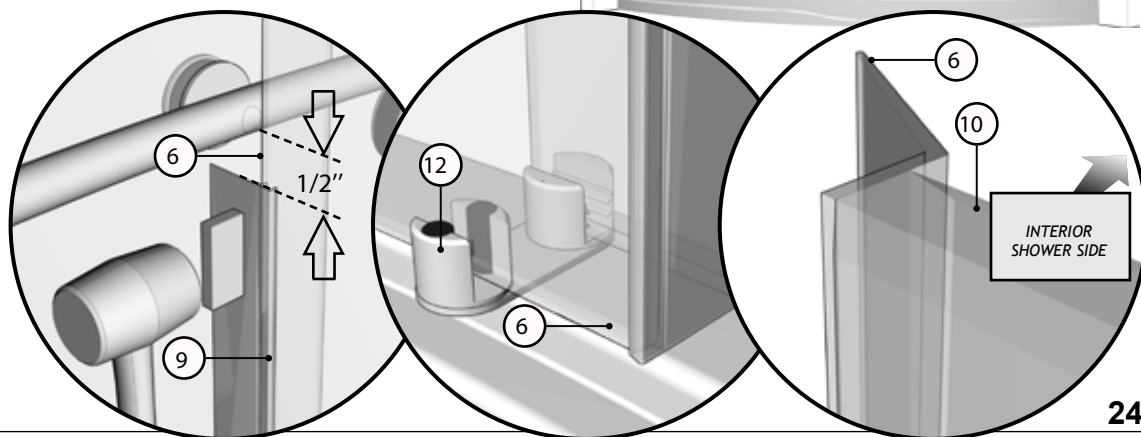
## 11 GASKETS INSTALLATION

### 11A

Install the door mid-gasket (9) to the door panel (6) by way of a protective block and mallet. Start from the bottom edge of the door panel and work the gasket up. Ensure that a 1/2" gap remains between the running rail (1) and the top edge of the mid-gasket (9) for clearance.

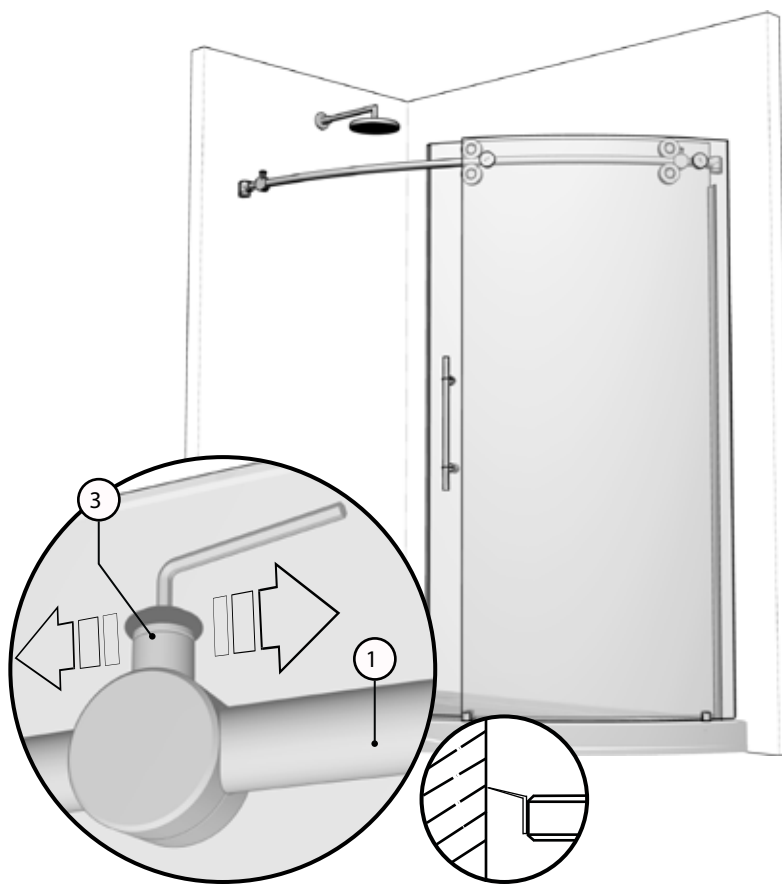
### 11B

Thoroughly clean the edge of the sliding door (6), closest to the side where the handle is located with a cloth and degreasing solution. Apply the door gasket (other half of gasket from Step 1) (10) to this edge of the sliding door (6).



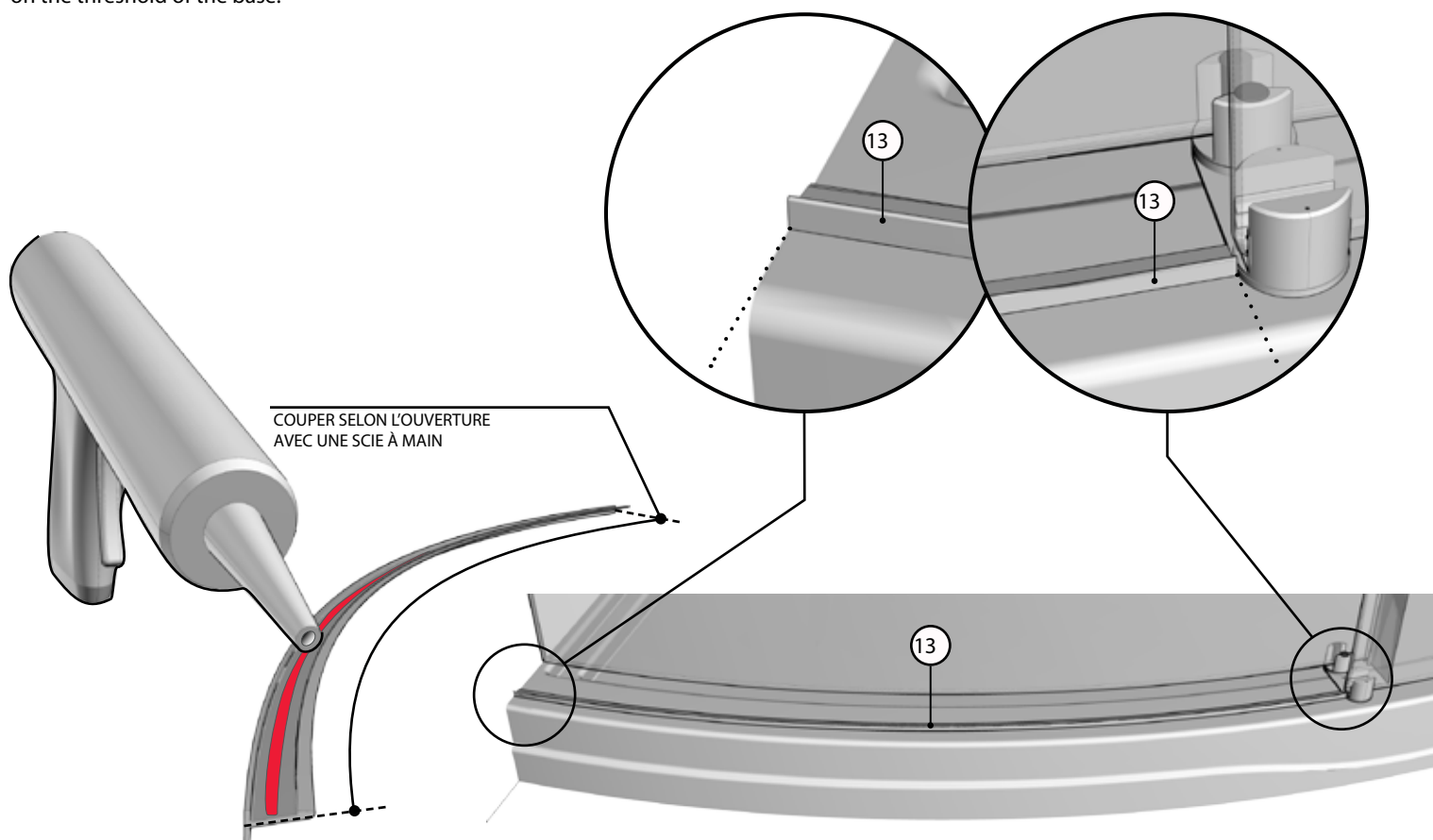
## 12 STOPPERS ADJUSTMENT

*Adjust the position of the stoppers (3) so as to ensure a maximum opening and closing range. Ensure that the sliding door gasket (10) is forced against the wall when the door is closed.*



## 13 THRESHOLD INSTALLATION

Cut the threshold (13) to the necessary opening ensuring optimal water retention. Proceed to applying a bead of silicone to the underside of the threshold and placing it on the threshold of the base.



## 14 SILICONE

Apply silicone (S) between the bottom of the fixed panel and the threshold of the base. This is done from the outside of the shower area.



**24** HOURS

