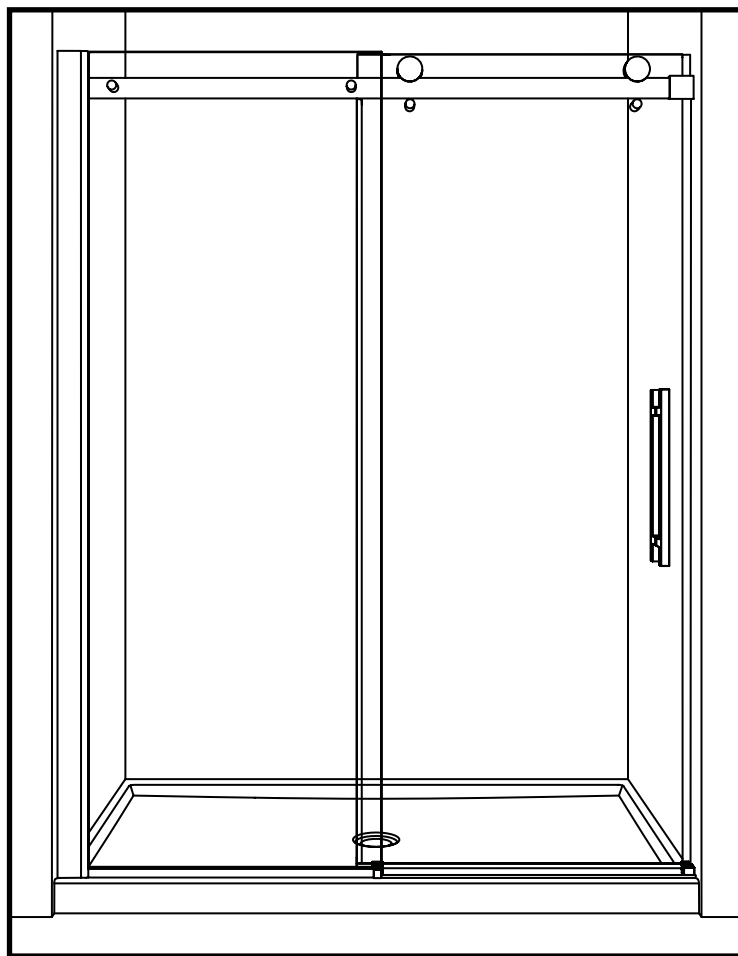


W1-48-75, W1-60-75
INSTRUCTION MANUAL

 **ALUMAX**
Kula Collection

SHOWER DOOR



2 PEOPLE REQUIRED



**IT IS MANDATORY TO HAVE A WALL STUD ON EACH SIDE OF THE
SHOWER UNIT TO SECURELY FASTEN THE RAIL TO THE WALLS.**

KW001

GENERAL INSTRUCTIONS

- *Read this manual carefully and completely before proceeding.*
- *It is recommended that you wear safety glasses at all times during the installation.*

INSTALLATION OVER CERAMIC TILES

- *If your shower door is to be installed over ceramic tiles, the tiles should lay completely under the wall jamb.*
- *Silicone should be used to seal the gap where the ceramic tiles meet the fixed panel.*

NOTICE

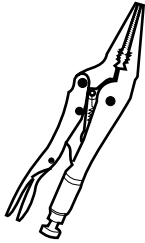
- *Caulking: no sealant is required inside the shower.*
- *Some models are equipped with clear sealing gaskets.*

CARE FOR YOUR SHOWER DOOR

- *Never use scouring powder pads or sharp instruments on metal pieces or glass panels. An occasional wiping down with a mild soap diluted in water is all that is needed to keep the panels and aluminum parts looking new.*
- *We recommend wiping the glass panels with a squeegee after each use.*

PRODUCT SPECIFICATIONS ARE SUBJECT TO CHANGE WITHOUT NOTICE.

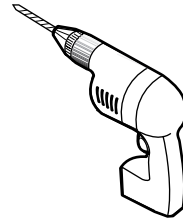
TOOLS AND MATERIAL REQUIRED



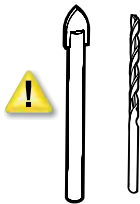
LONG NOSE LOCKING PLIER



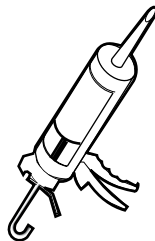
SCREWDRIVERS



DRILL



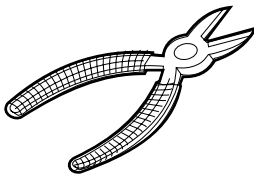
1/4" & 1/8" DRILL BITS



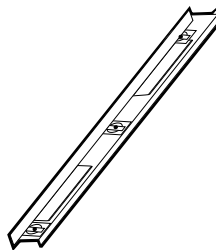
SILICONE



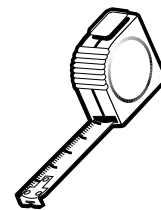
PENCIL



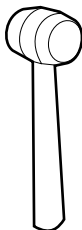
CUTTING PLIER



LEVEL



TAPE MEASURE



MALLET



RUBAN DOUBLE FACE VHB

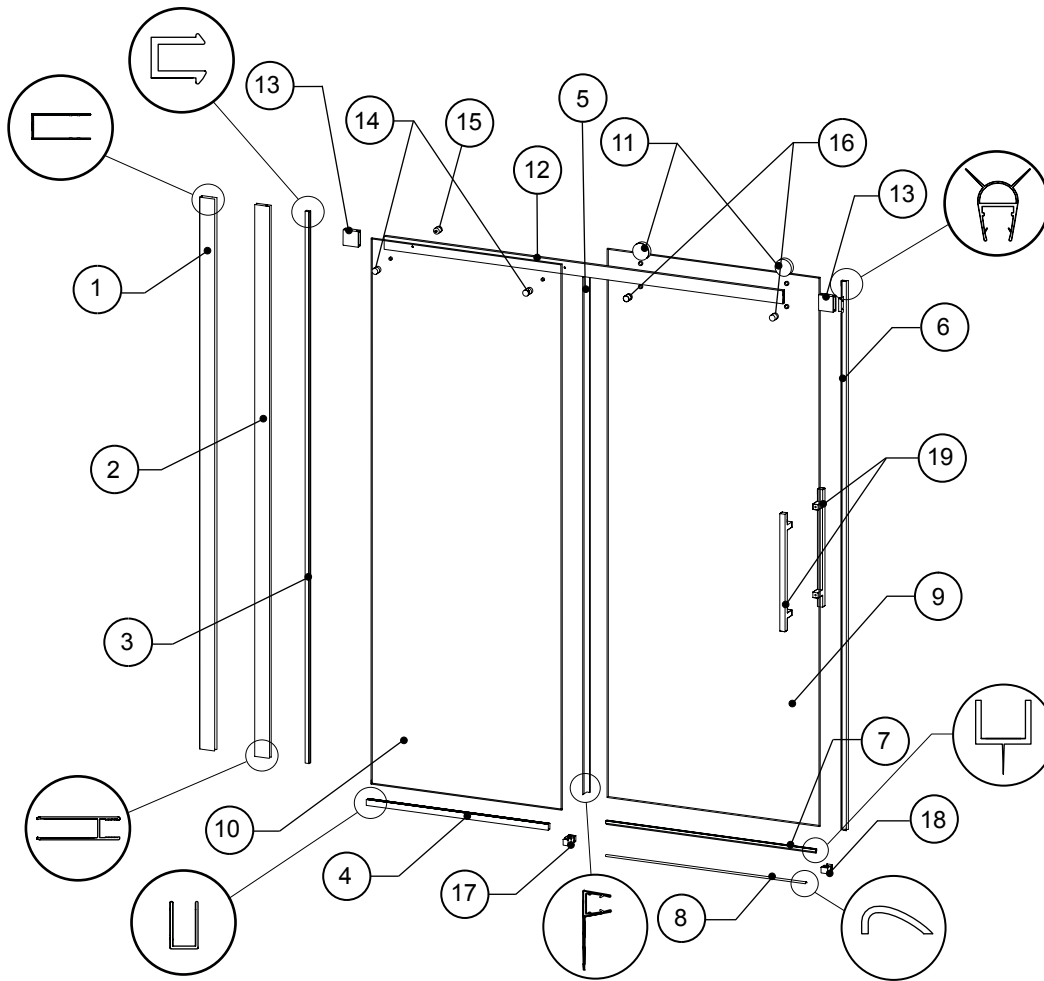


5/16" HEX NUT DRIVER

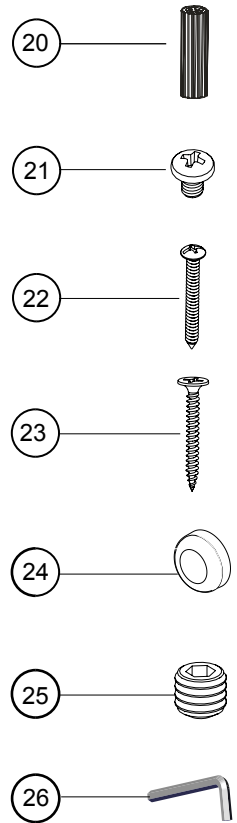


TO INSTALL THE SHOWER DOOR ON CERAMIC TILES, USE A 1/4" DRILL BIT FOR CERAMIC TILES.

PARTS LISTING



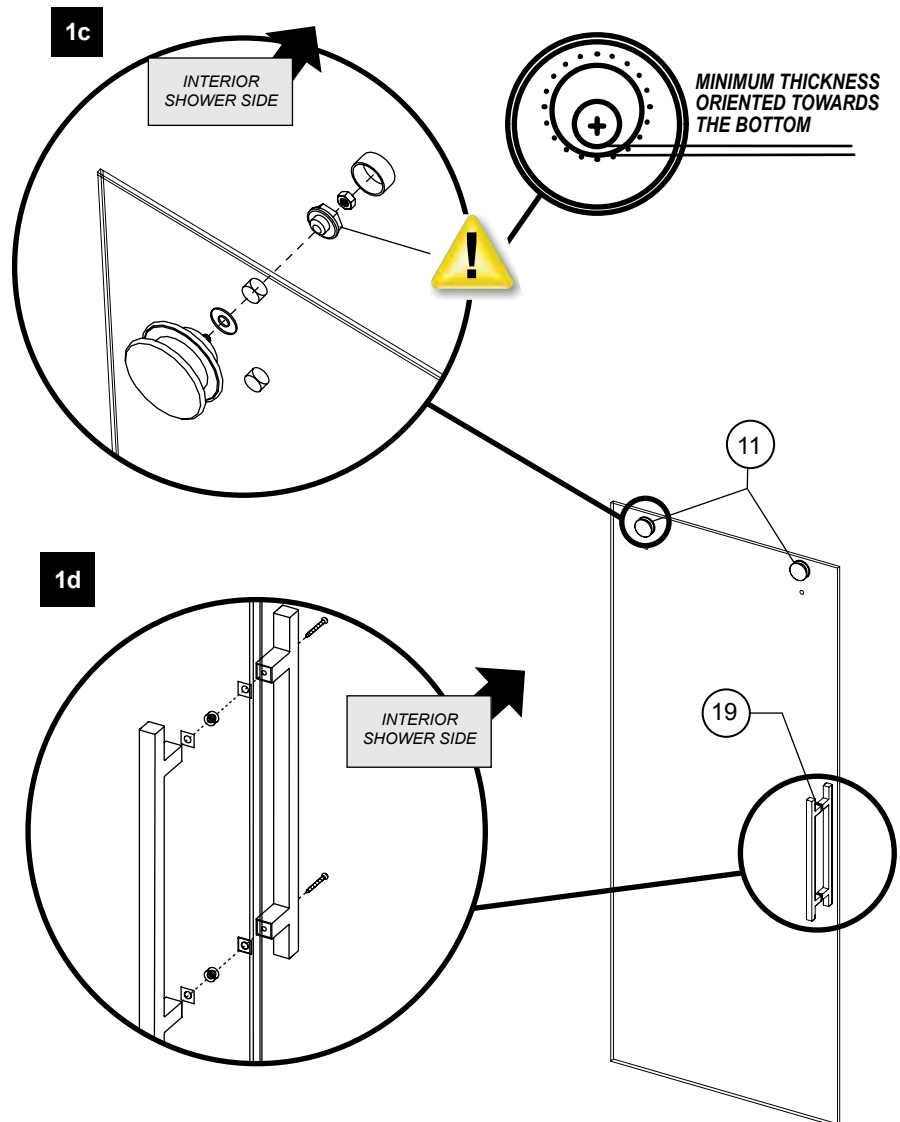
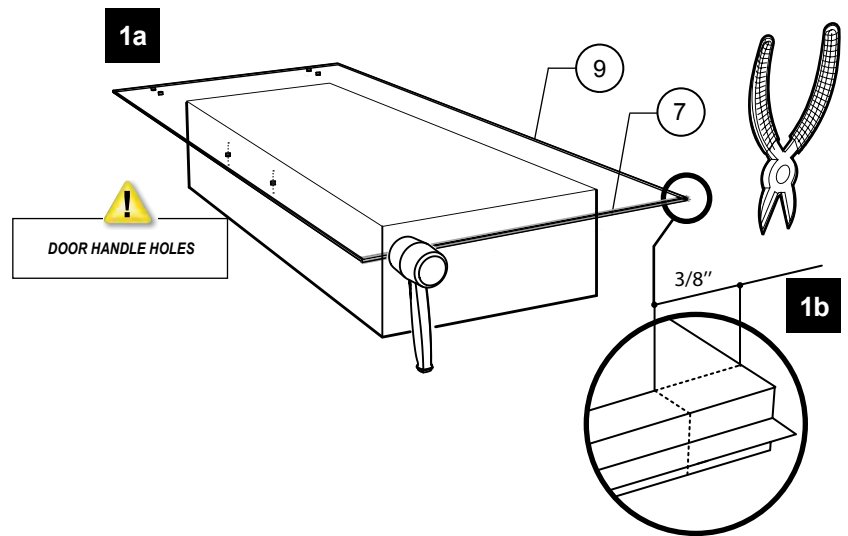
HARDWARE



ITEM	PARTS	QTY
1	WALL JAMB	1
2	EXPANDER	1
3	EXPANDER GASKET	1
4	FIXED PANEL U CHANNEL	1
5	MIDGASKET	1
6	DOOR GASKET	1
7	BOTTOM DOOR GASKET	1
8	ALUMINUM THRESHOLD	1
9	DOOR PANEL	1
10	FIXED PANEL	1
11	ROLLERS	2
12	RUNNING RAIL	1
13	WALL MOUNT BRACKET	2
14	GLASS FASTENER	2
15	STOPPER	1
16	ANTI-JUMP	2
17	BOTTOM GUIDE	1
18	DOOR RECEIVER	1
19	DOOR HANDLE	2
20	WALL PLUG	8
21	EXPANDER SCREW	6
22	WALL JAMB SCREW	4
23	FLAT HEAD SCREW	2
24	SCREW CAP	6
25	HEX SOCKET SET SCREW	8
26	HEX KEY 3mm	1

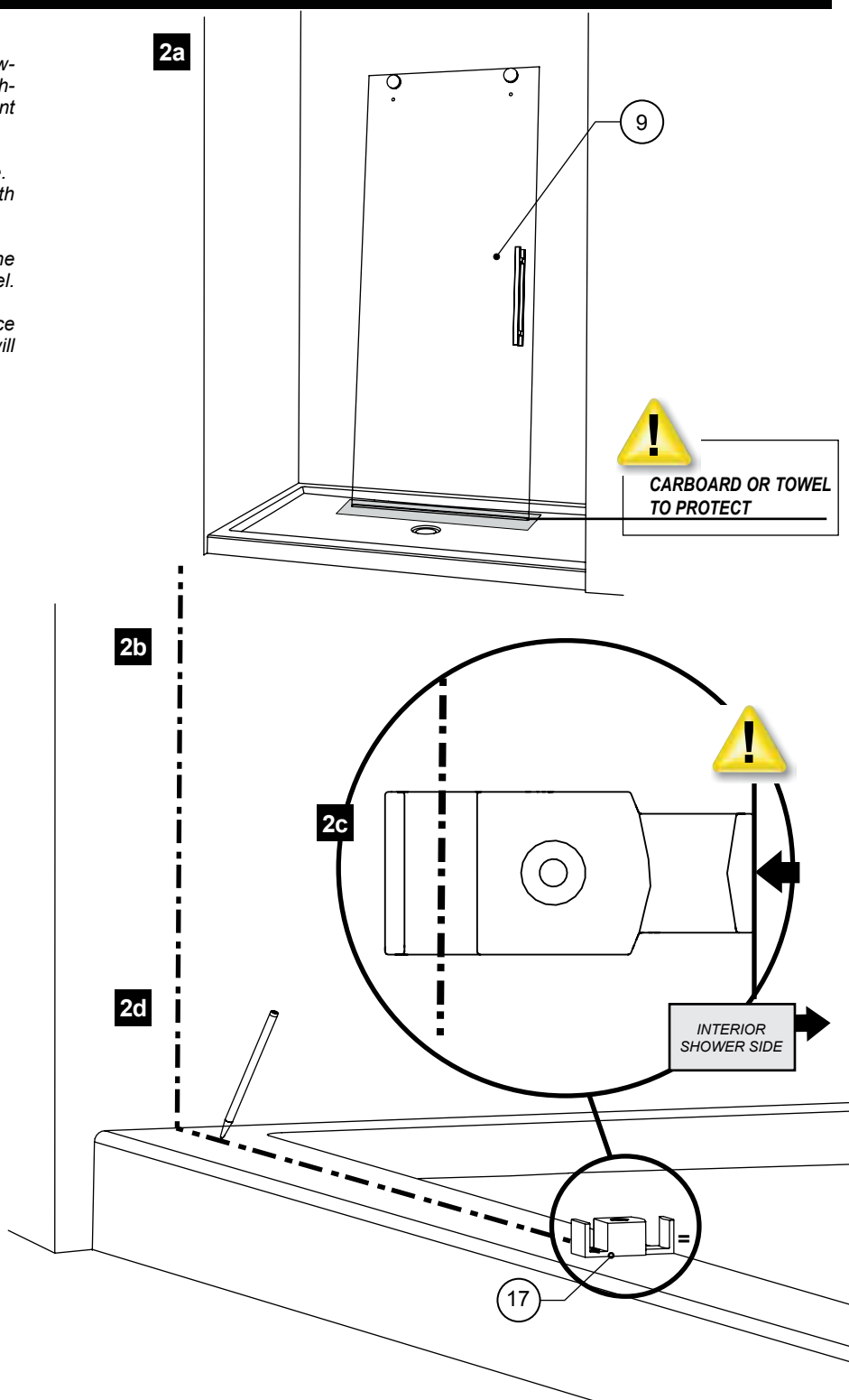
1 DOOR PANEL ASSEMBLY

- 1a** Use a mallet to install bottom gasket (7) on the bottom of the door panel (9). To facilitate installation place door panel on cardboard packaging box and use as platform. Notice the holes are situated at the top of the panel.
- 1b** Measure and cut $3/8$ " off the edge of the gasket. Cut opposing side of door handle holes.
- 1c** Install both rollers (11) through the top holes of the door panel. Be sure that the adjustment wheel is turned to position the minimum thickness of wheel towards the bottom.
- 1d** Install door handle (19). Holes for screws are located on the back handle and must be located in the interior of the shower door.



2 WALL JAMB INSTALLATION

- 2a** Place door panel (9) inside shower to simplify following installation procedures. Place the panel on a cushioned surface, such as a towel or carboard, to prevent damage either to the panel or the base.
- 2b** Temporarily place bottom guide (17) on shower base. The back of the bottom guide must be placed flush with the inner threshold edge of the shower base.
- 2c** While keeping bottom guide in place at the edge of the threshold, trace a line in the center of the front channel.
- 2d** Continue to trace the center line at the same distance along the threshold up the side of the wall. This will locate the placement of your wall jamb.



THE BACK OF BOTTOM GUIDE (17) MUST BE FLUSH WITH INNER THRESHOLD OF SHOWER BASE.

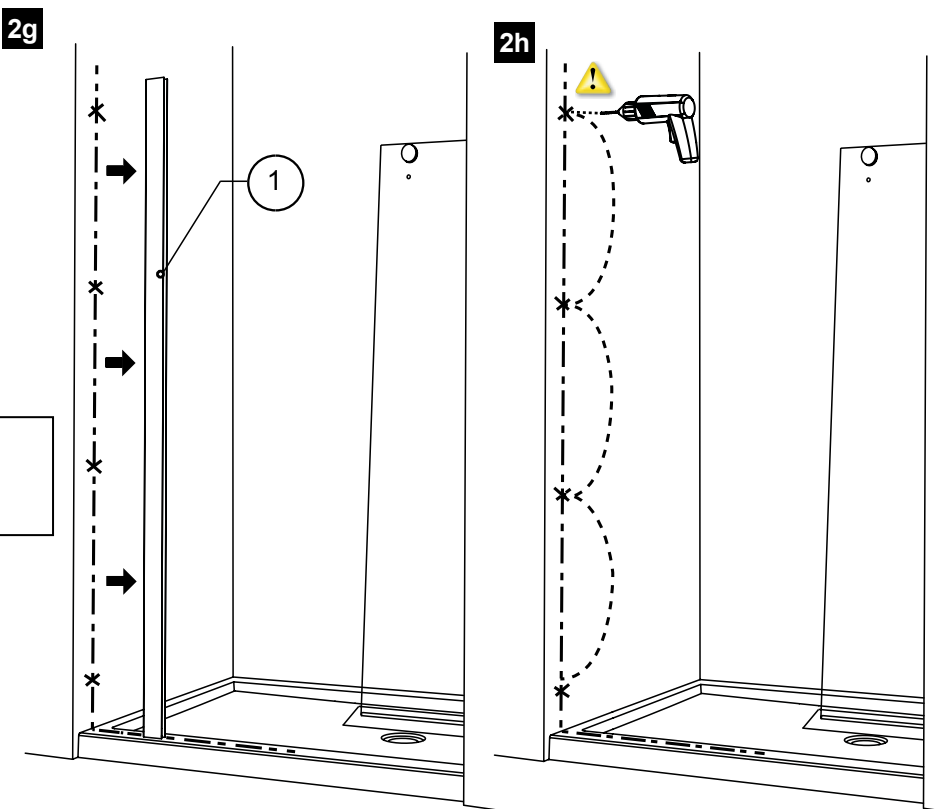
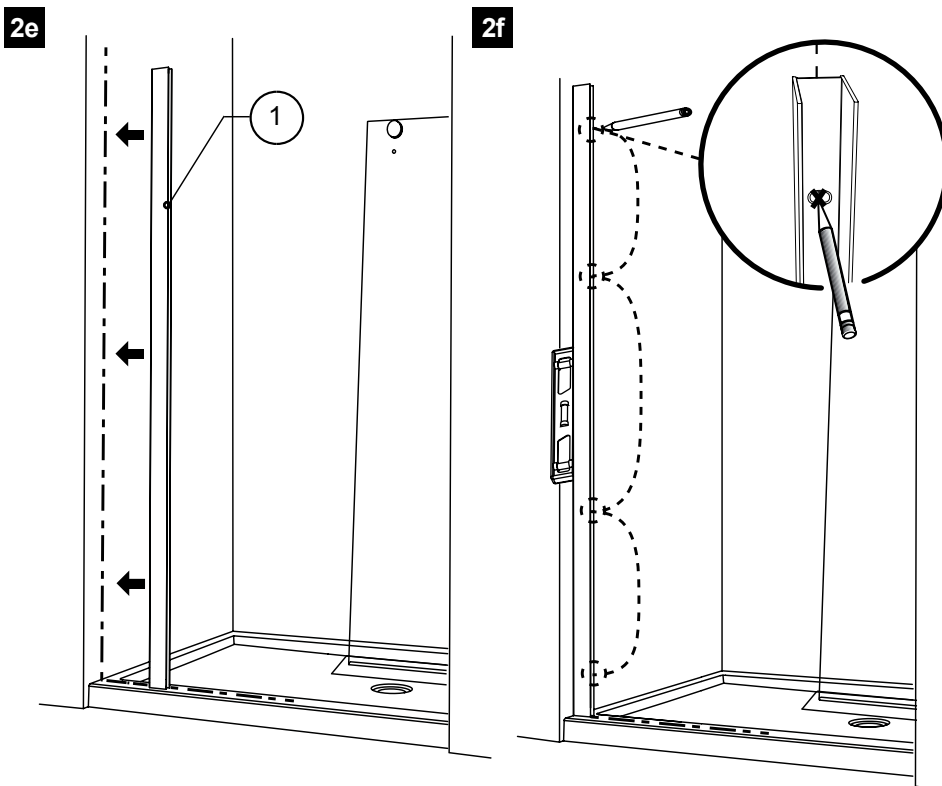
2 WALL JAMB INSTALLATION

2e Place wall jamb against wall using centerline previously marked as a guide. Be sure to center the slotted holes with the centerline.

2f Level and mark locations of the four holes to be drilled.

2g Remove the wall jamb.

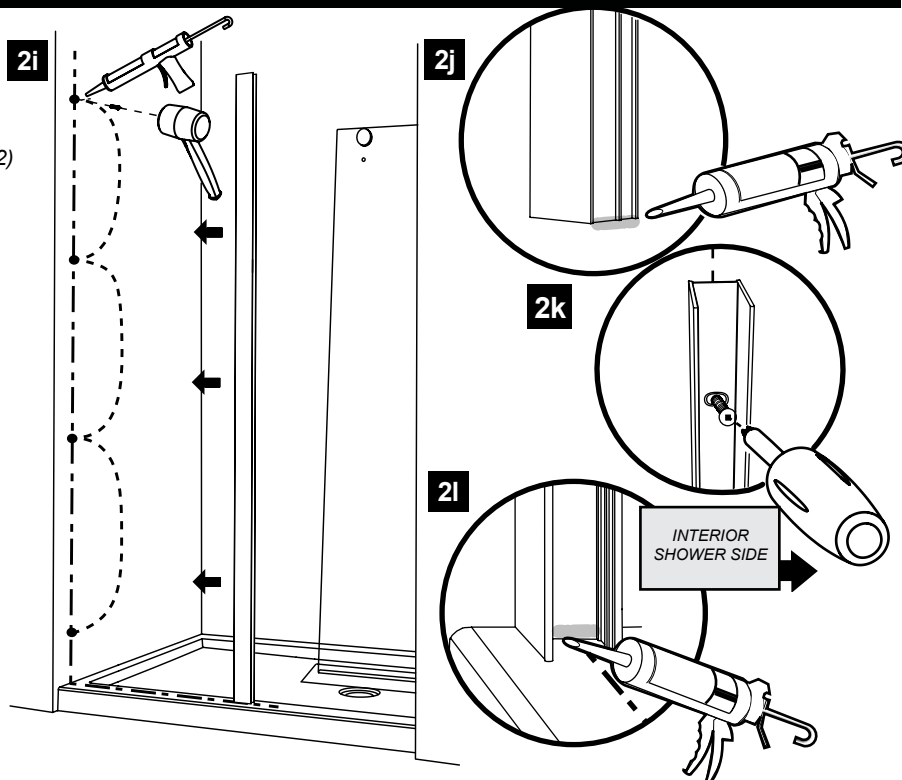
2h Drill a hole in each location with a 1/4" drill bit. ⚠




CERAMIC TILE INSTALLATION
USE A BIT FOR CERAMIC TILE.

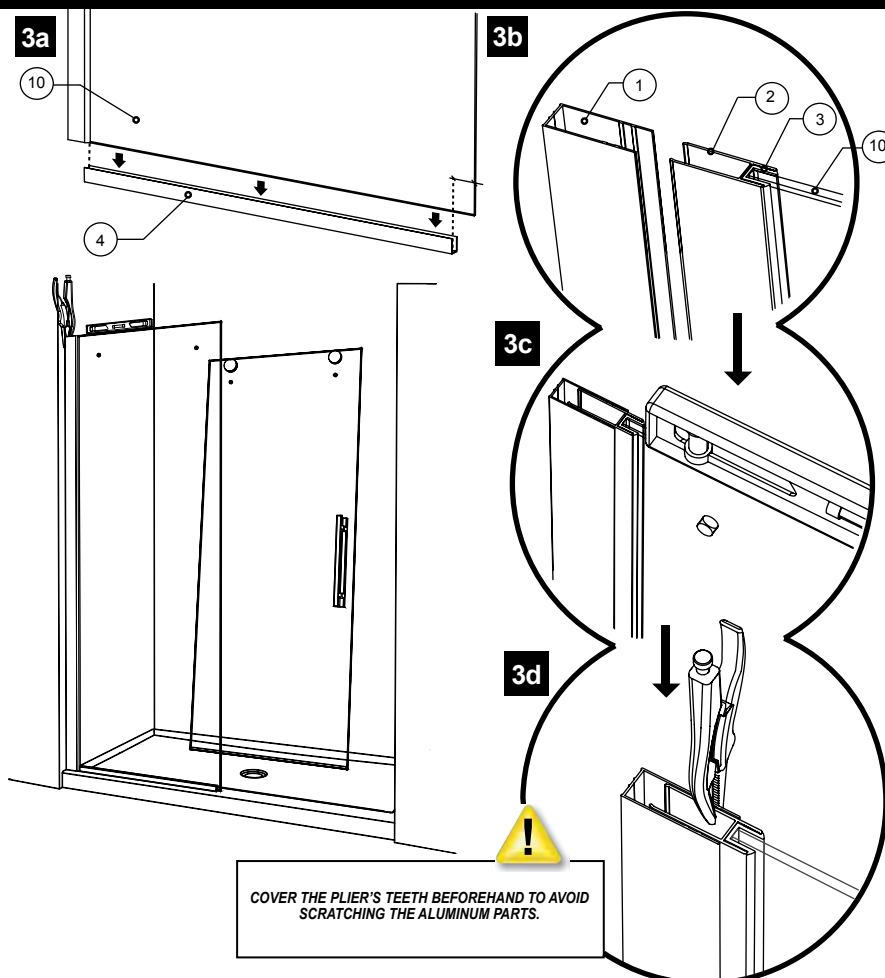
2 WALL JAMB INSTALLATION

- 2i** Insert one drop of silicone in each hole in the wall before inserting the supplied wall plugs (4x)
- 2j** Add silicone to exterior bottom edge of wall jamb.
- 2k** Fasten the wall jamb to the wall with 1-1/4" screws (22) through the previously installed wall plugs. (x4)
- 2l** Add silicone to interior bottom edge of wall jamb



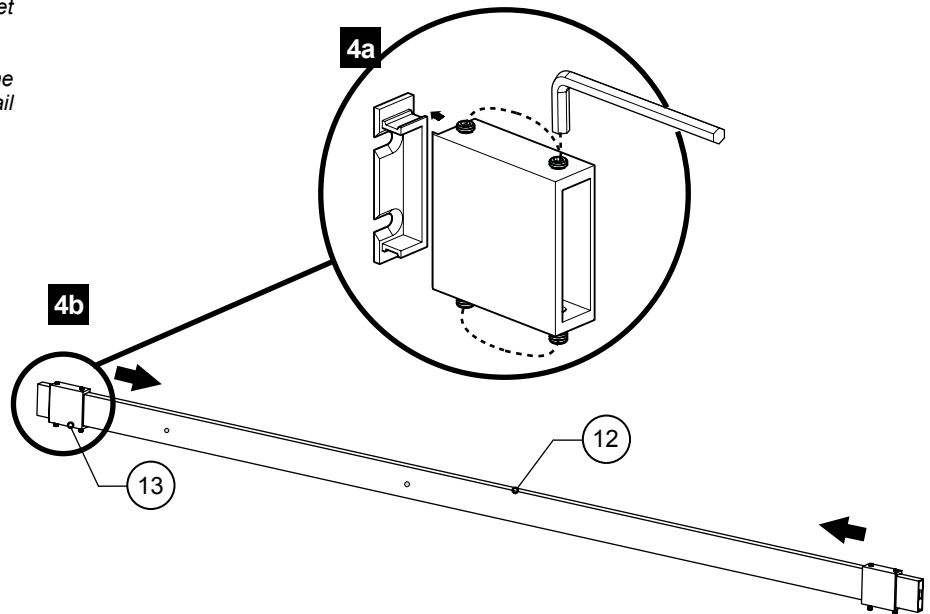
3 FIXED PANEL

- 3a** Place U-channel (4) temporarily on bottom of fix panel (10).
- 3b** Slide the fix panel (10) pre-assembled with expander (2) and gasket (3) into the wall jamb (1).
- 3c** Level the glass panel assembly with the wall jamb.
- 3d** Lock into position by clamping the wall jamb and expander with pliers. 




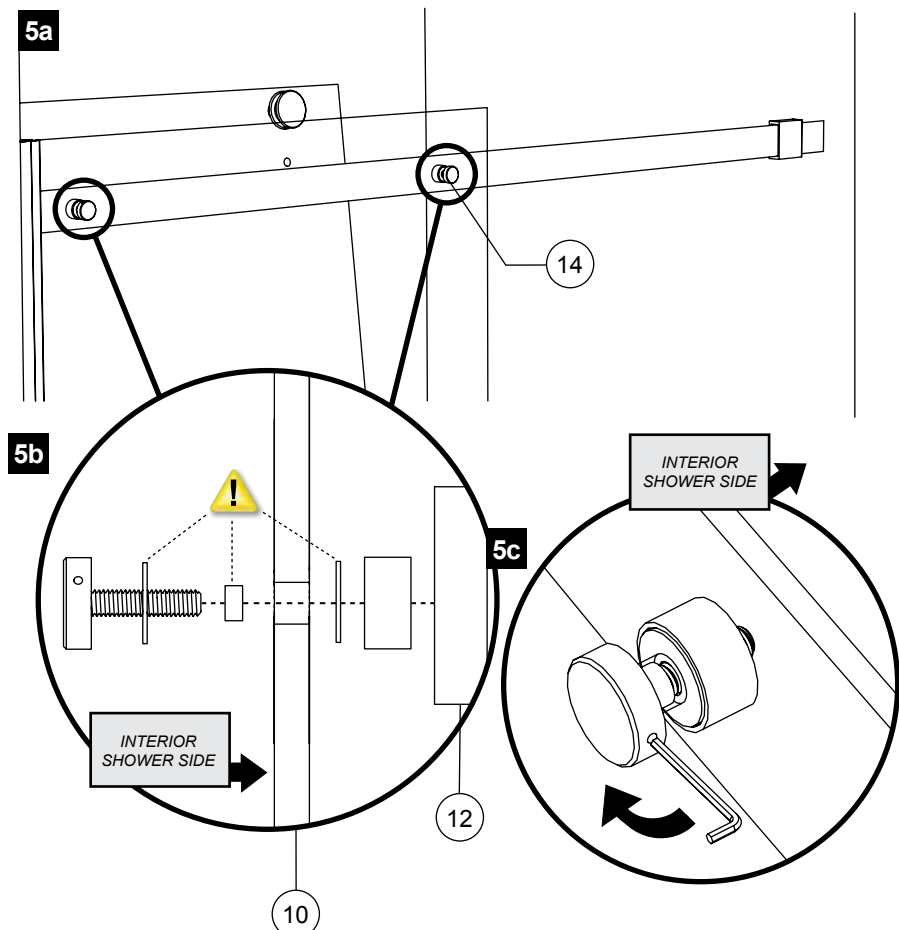
4 RUNNING RAIL

- 4a** Unfasten set screws (x4) from wall bracket (13). Then remove back plate from the wall bracket and set aside
- 4b** With back plates of wall brackets removed, slide the wall brackets away from the ends of the running rail (12).



5 GLASS FASTENERS

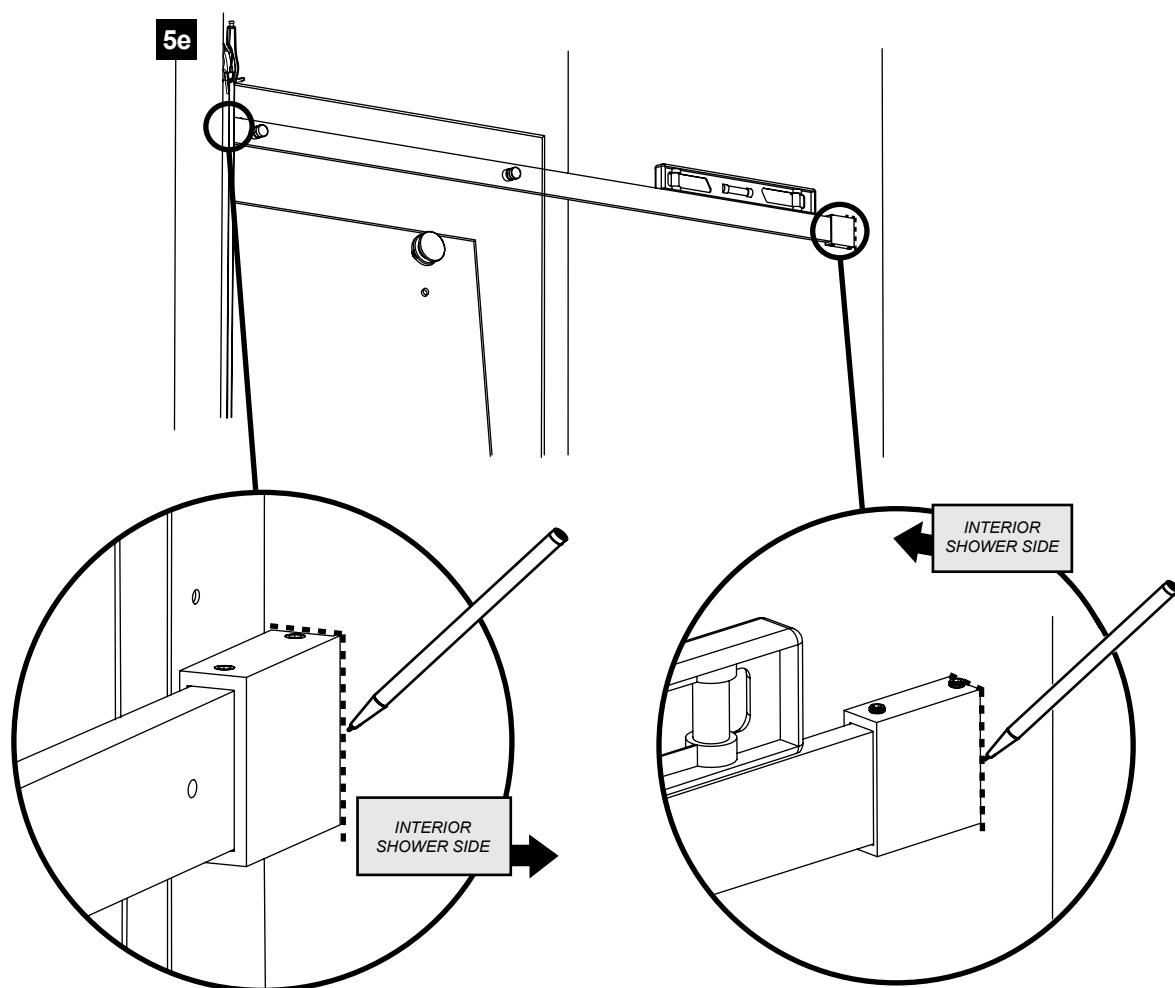
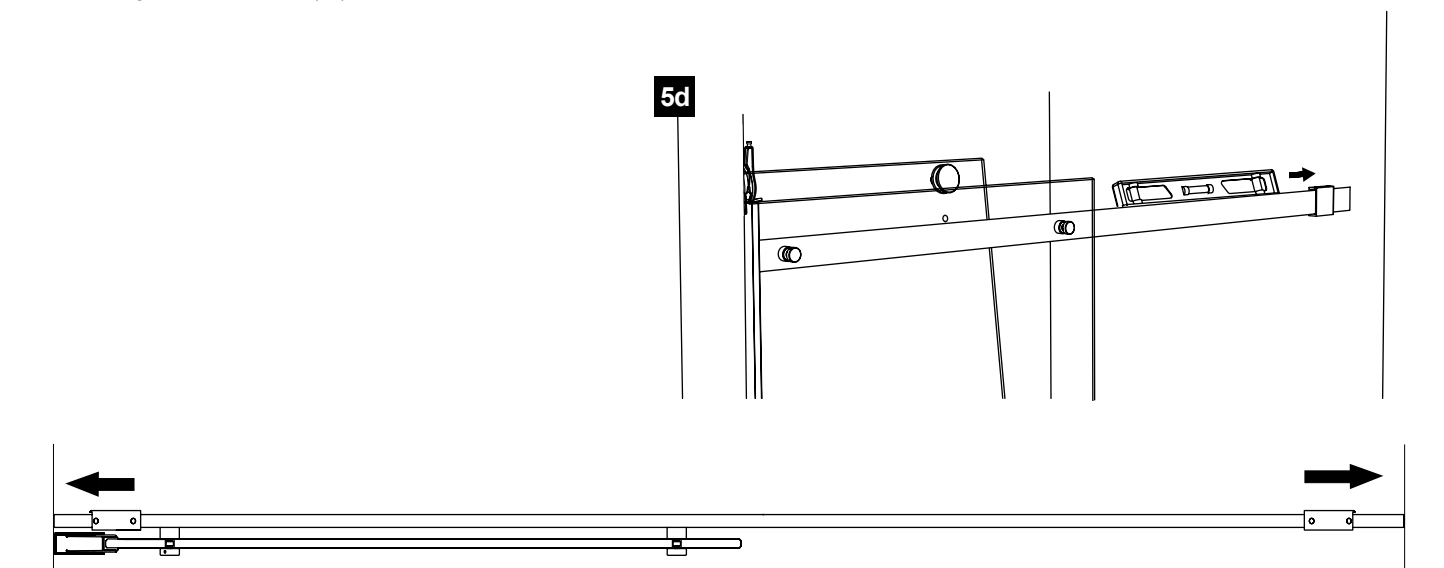
- 5a** Align running rail holes with holes in fix panel.
- 5b** Install glass fasteners (14) to join fix panel (10) and rail (12). Be sure to place gaskets between all contact with glass and metal parts.
- 5c** Fasten with hex 3mm key. 



5 RUNNING RAIL

5d Push wall brackets against wall (x2) and level.

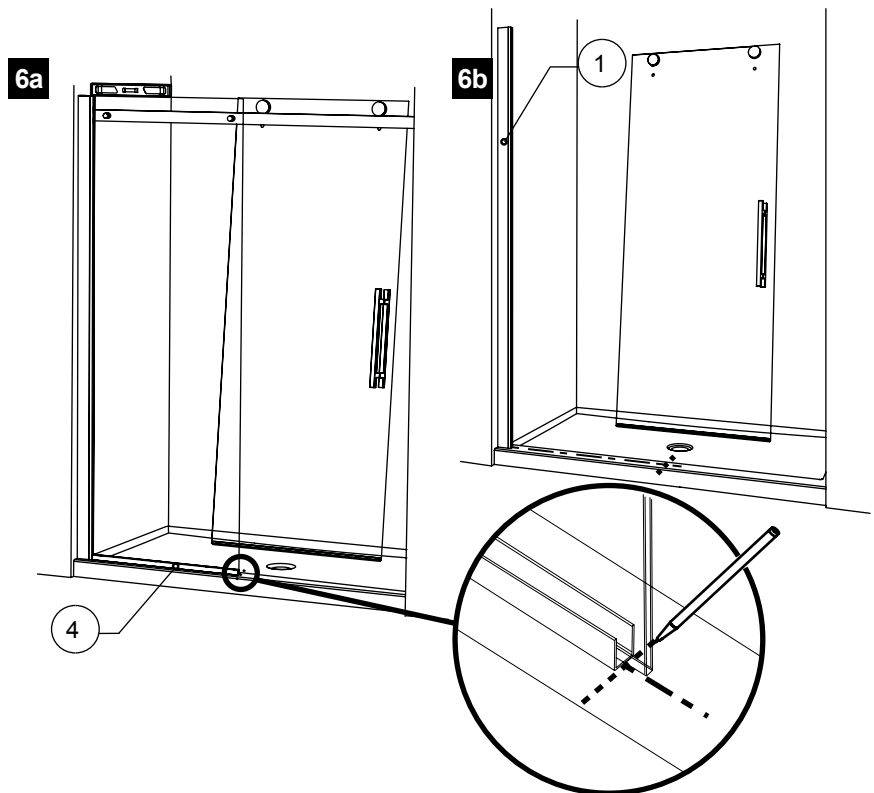
5e Trace outer edge of wall bracket. (x2)



6 BOTTOM GUIDE

6a Trace edge of U-channel (4) to determine location of bottom guide.

6b Remove glass fasteners, running rail along with wall brackets, fixed panel and U-channel (4). Put aside. Only the wall jamb (1) and previously assembled door panel should stay in place.

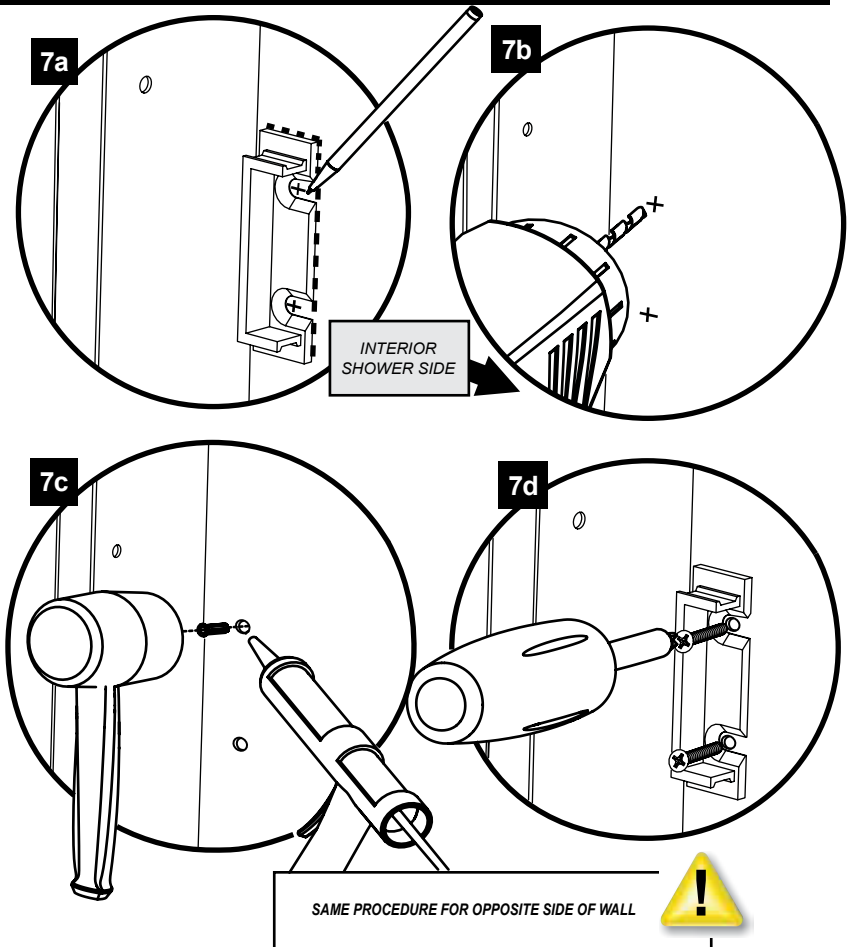
**7 WALL BRACKET BACK PLATE**

7a Align back plate of wall bracket to previously traced mark on wall. Trace hole centers to determine drilling location. (x2)

7b Drill marked holes in walls by using the 1/4" drill bit.

7c Insert one drop of silicone in each hole bored in the wall before inserting the wall plugs.

7d Screw in flat head screws through holes to secure back plate of bracket to wall (x2)



8 U-CHANNEL EMPLACEMENT

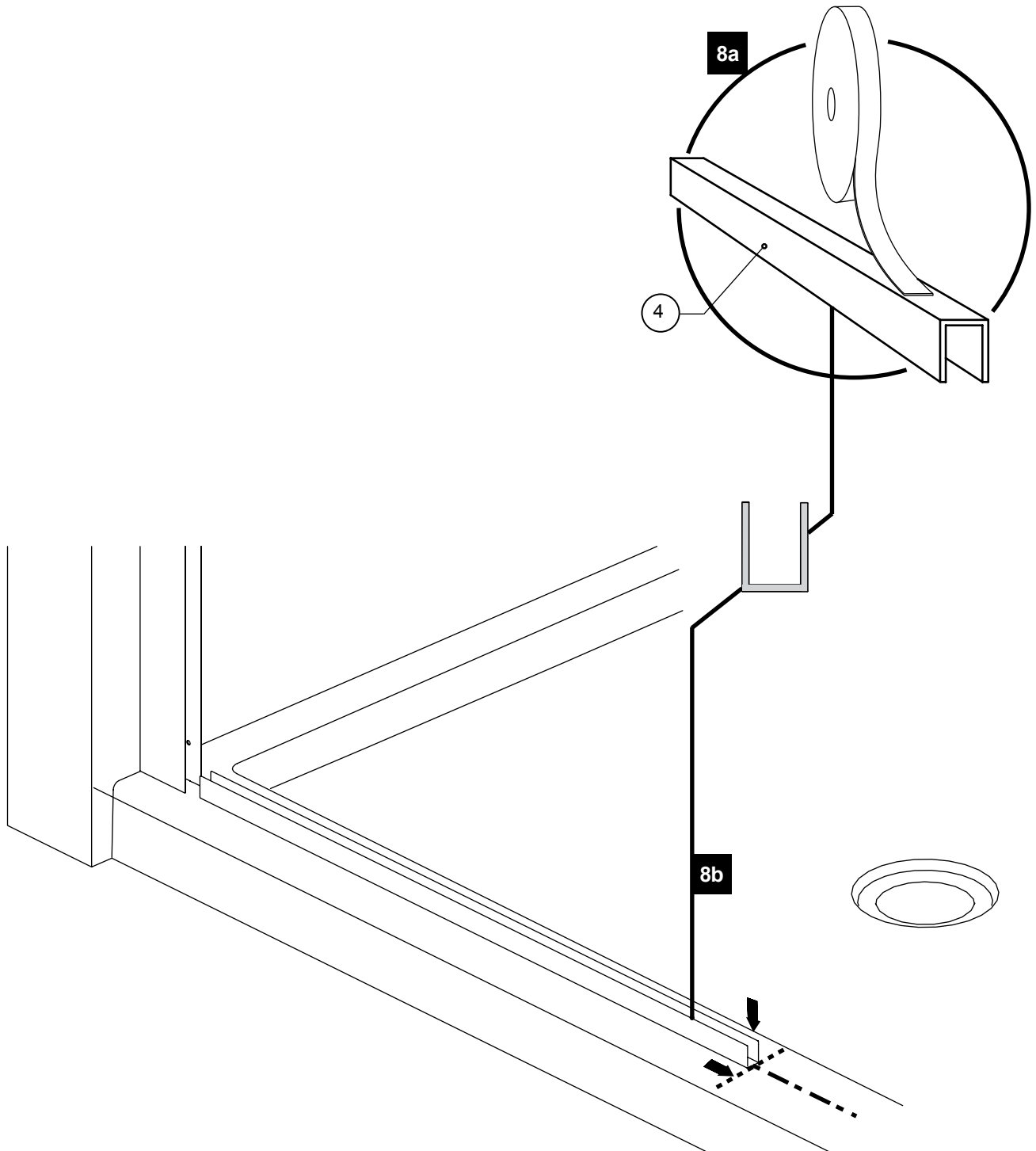
8a Apply double sided VHB tape to bottom of U-channel (4).



8b Align u-channel with previously marked lines on base. then press down to secure to base.



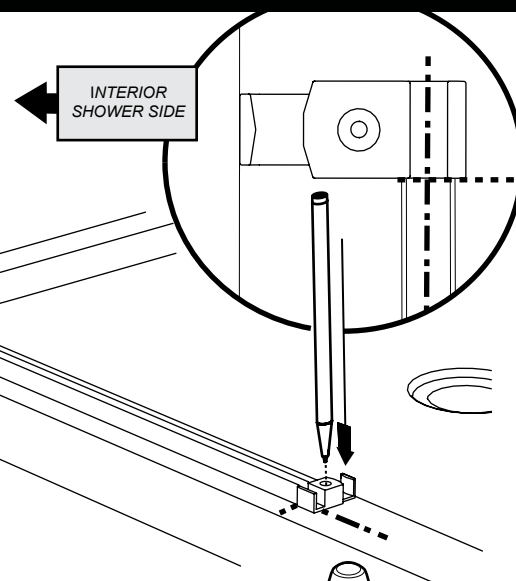
CLEAN BOTTOM OF U-CHANNEL AND BASE BEFORE APPLYING DOUBLE SIDED VHB TAPE TO UNDERSIDE OF U-CHANNEL.



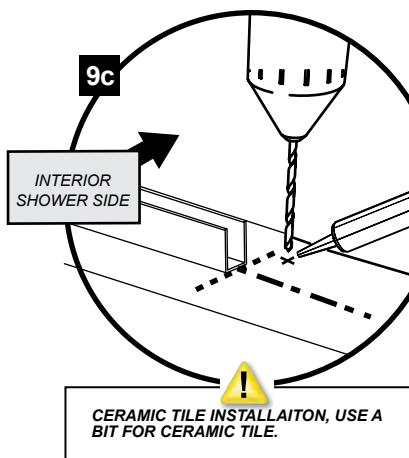
9 FIX PANEL INSTALLATION

- 9a** Place bottom guide to edge of U-Channel and center the front channel of the bottom guide to the center of U-Channel.
- 9b** Once in place mark hole location and remove bottom guide.
- 9c** Drill with 1/8" drill bit in marked location, then apply a drop of silicone in hole.
- 9d** Reposition bottom guide and secure in place. Top with screw cap.
- 9e** Install fix panel. Be sure to level panel and align edge with end of bottom guide.

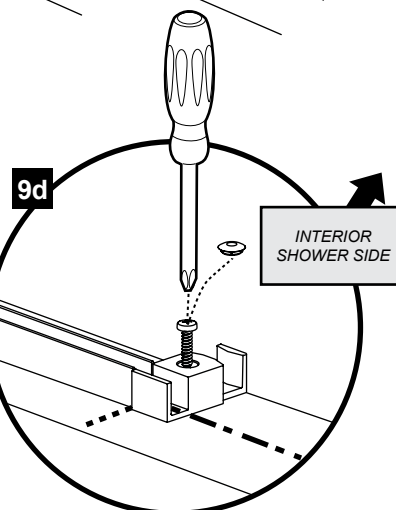
9a



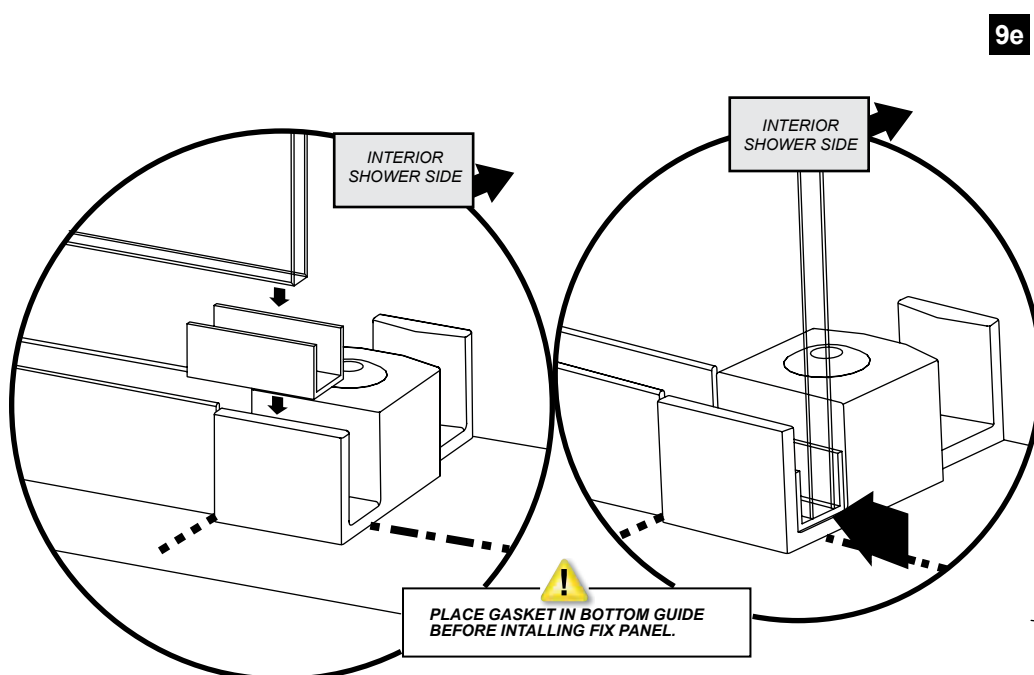
9b



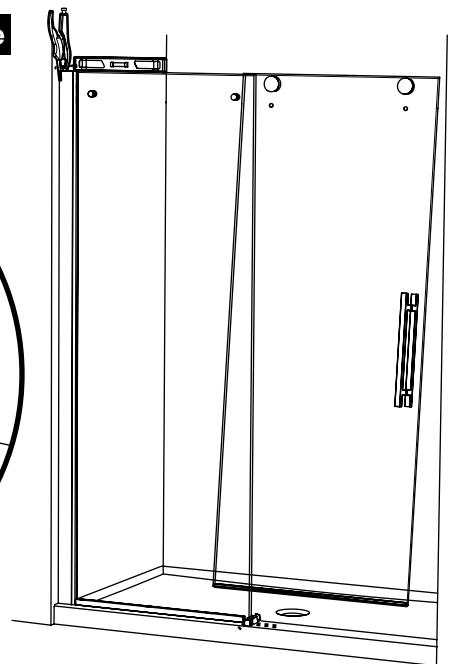
9c



9d



9e

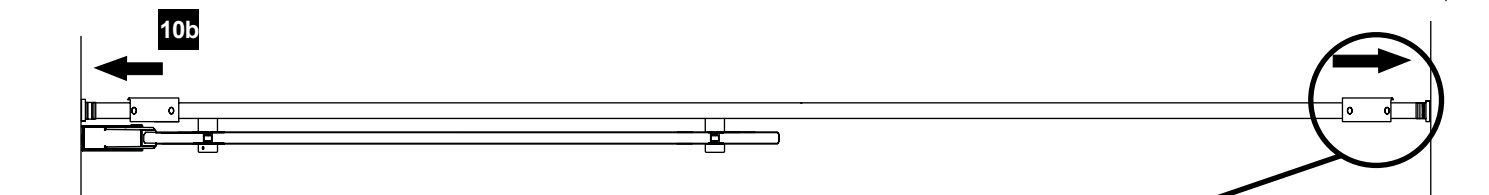
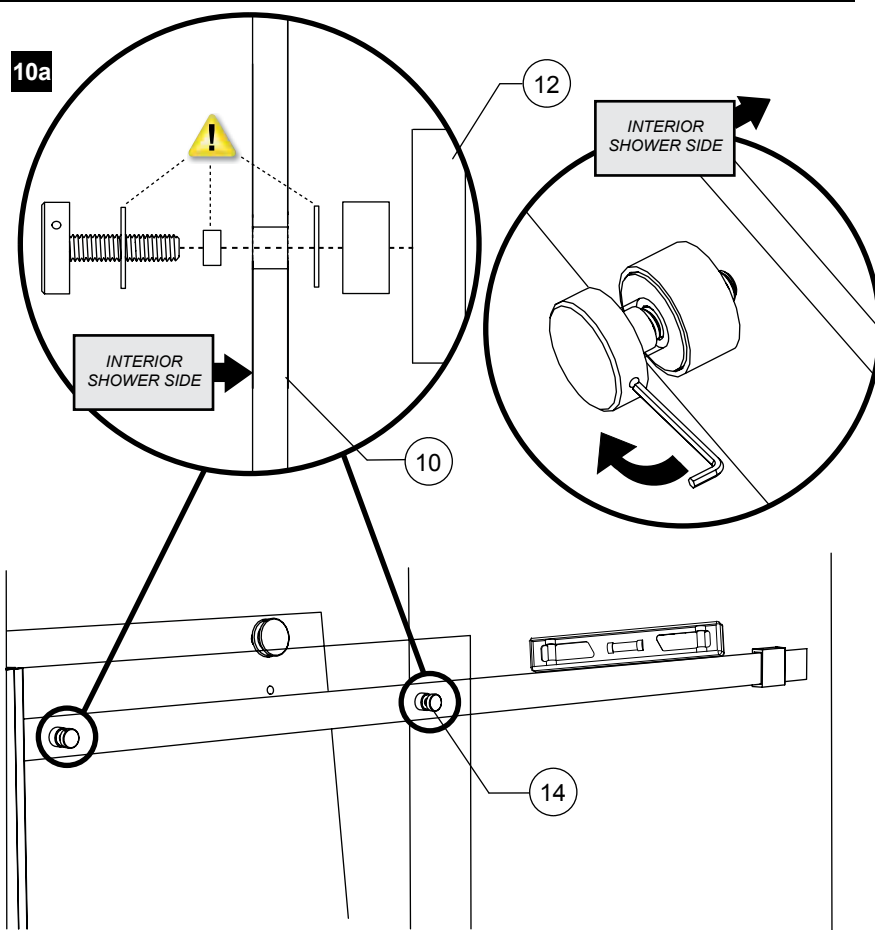


10 RUNNING RAIL

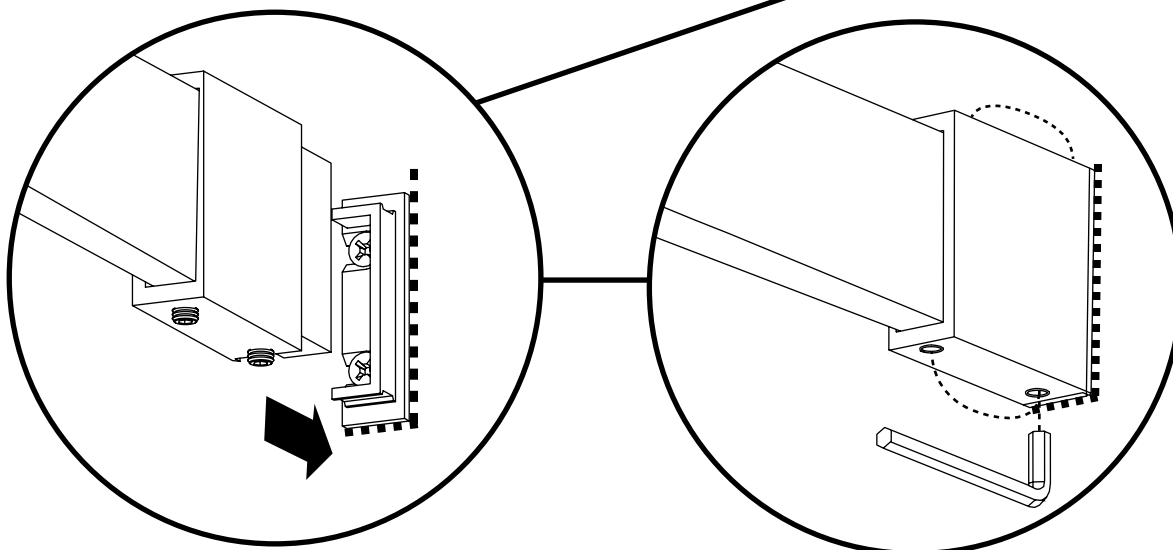
10a Install running rail . Align holes in rail with glass fasteners (14). Tighten glass fasteners with key to hold rail in place. (see step 5)

10b Push wall brackets towards wall and lock in with back plate previously secured to wall. Repeat on opposite side.

10c Tighten set screws to secure in place with provided allen key. (X8)

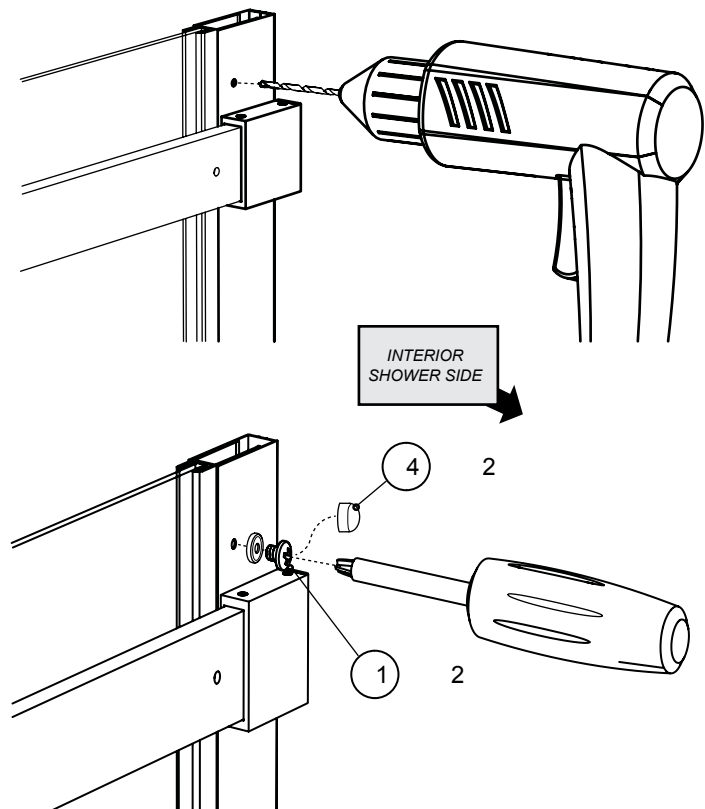


10c



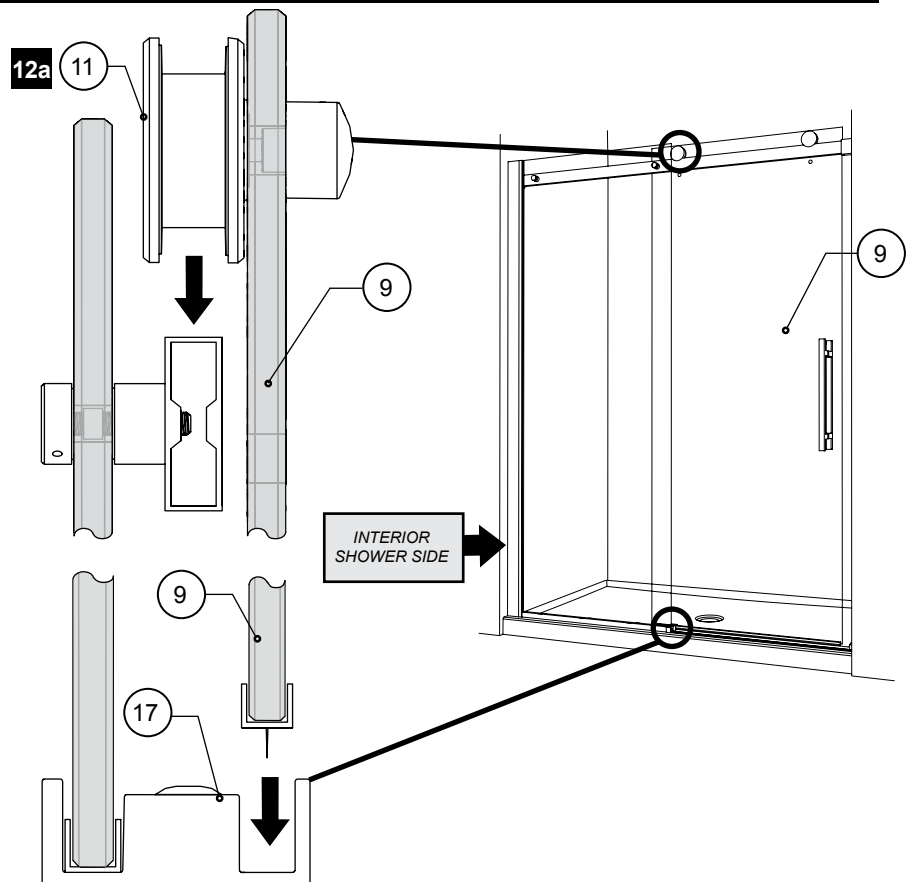
11 WALL JAMB AND EXPANDER

- 11a** Drill through wall jamb hole with 1/8" drill bit, to pierce through the expander. (x3)
- 11b** Screw 3/4" screws (21) through holes to hold expander and wall jamb together in place. (x3) Cover all screws with screw caps (24).



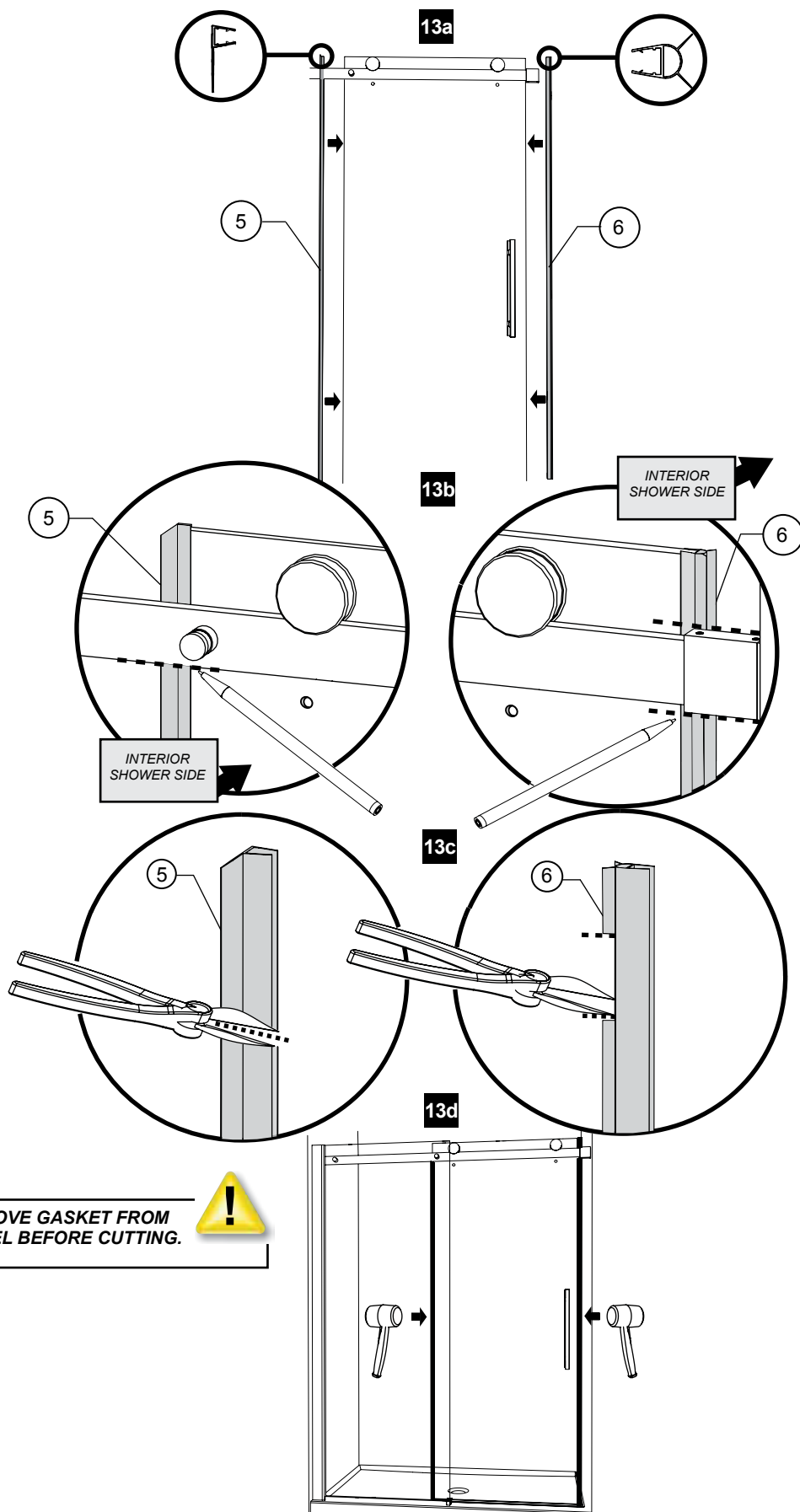
12 DOOR PANEL INSTALLATION

- 12a** Install door panel (9) by aligning the rollers (11) on running rail (12) and by aligning the door panel (9) with the back channel of bottom guide (17)
- 12b** Slide door to insure a smooth stable glide.



13 DOOR GASKETS

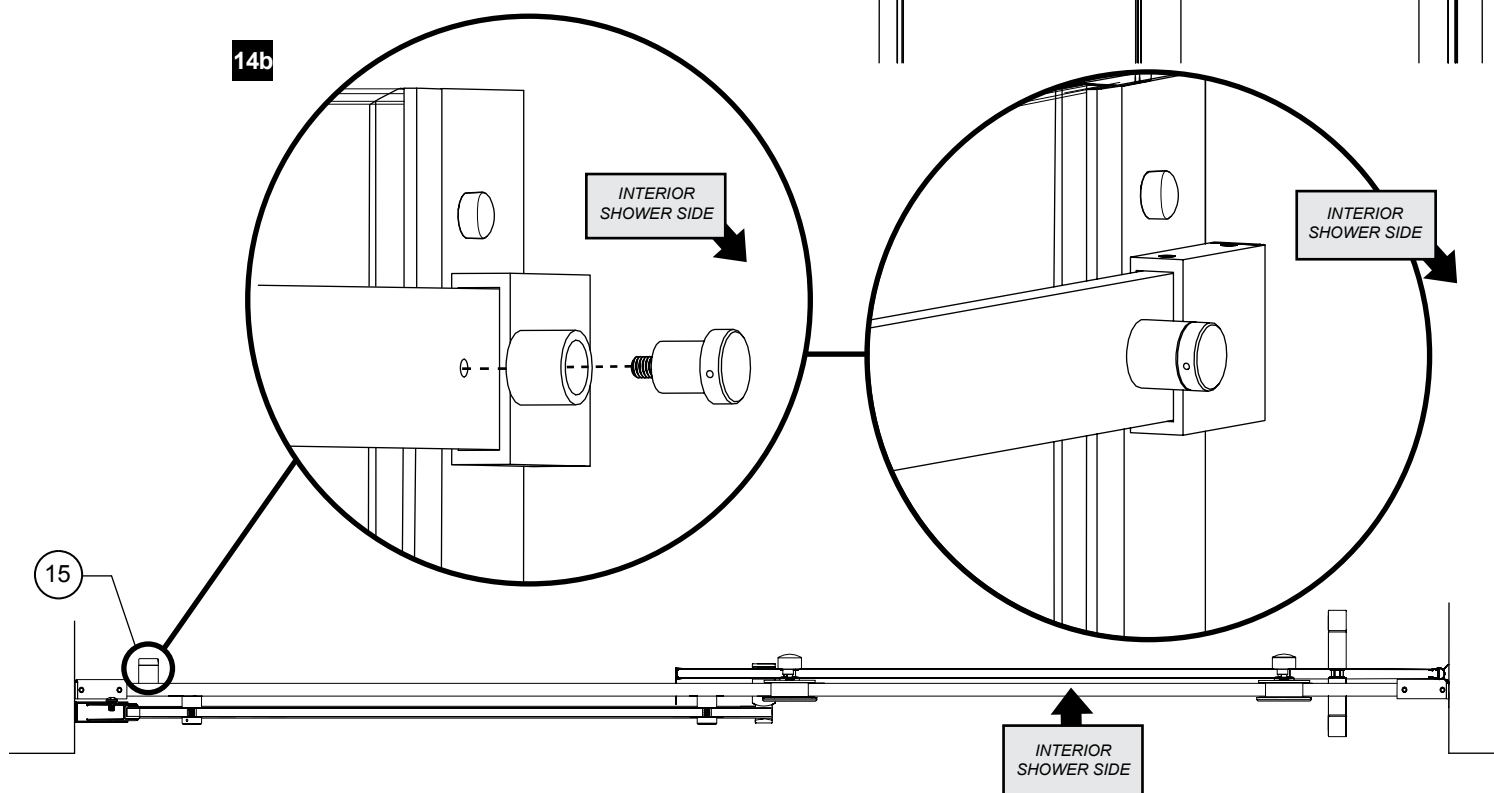
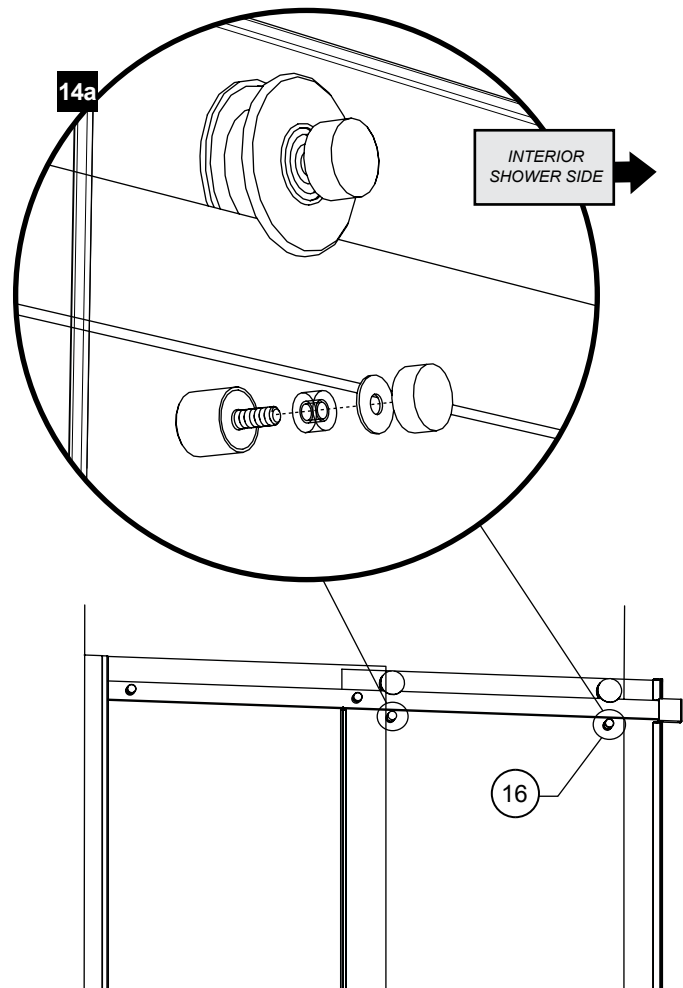
- 13a** Temporarily install midgasket (5) and the door gasket (6) to door panel.
- 13b** Close door entirely, mark interference of gaskets with running rail.
- 13c** Cut gasket at marked locations with cutters. Note that midgasket (5) needs only to be cut below running rail. The top part is no longer required for assembly.
- 13d** Reinstall gaskets from bottom working your way up. Use a mallet to insure that the gaskets are fully pushed onto glass panel door.



14 ANTI-JUMP & DOOR STOPPER

14a Install Anti-Jump (16) in lower holes of door panel located below the running rail. Be sure to place gas-kets between contact of glass and aluminium parts. (x2)

14b Install door stopper (15) located in the interior shower next to wall jamb. Use hole provided in running rail.



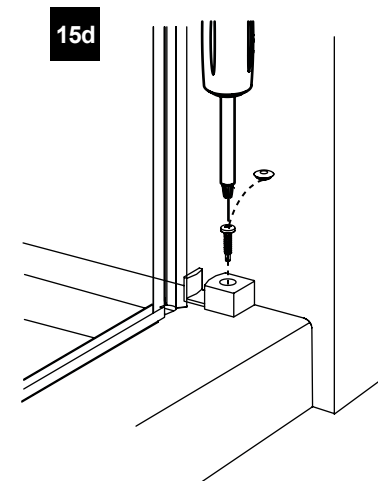
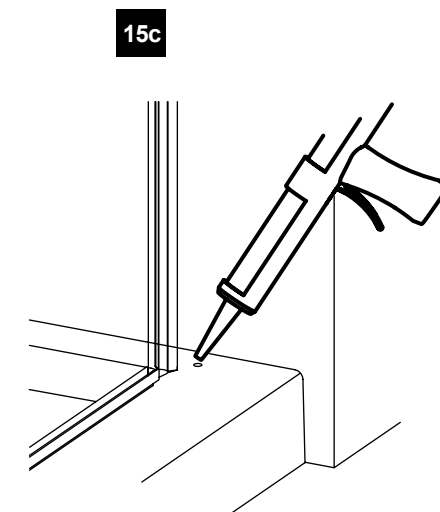
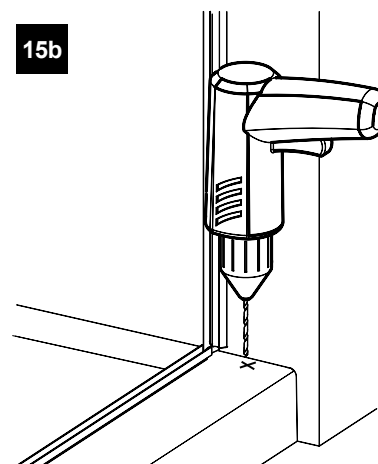
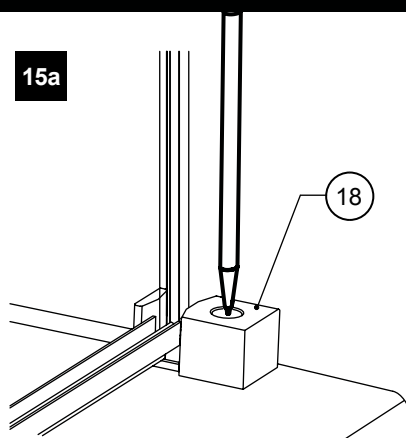
15 DOOR RECEIVER INTALLATION

15a Place door receiver (18) against wall, place so that the door panel slides smoothly into receiver. Mark hole location.

15b Remove door receiver and drill in marked location with 1/8" drill bit.

15c Insert one drop of silicone into hole.

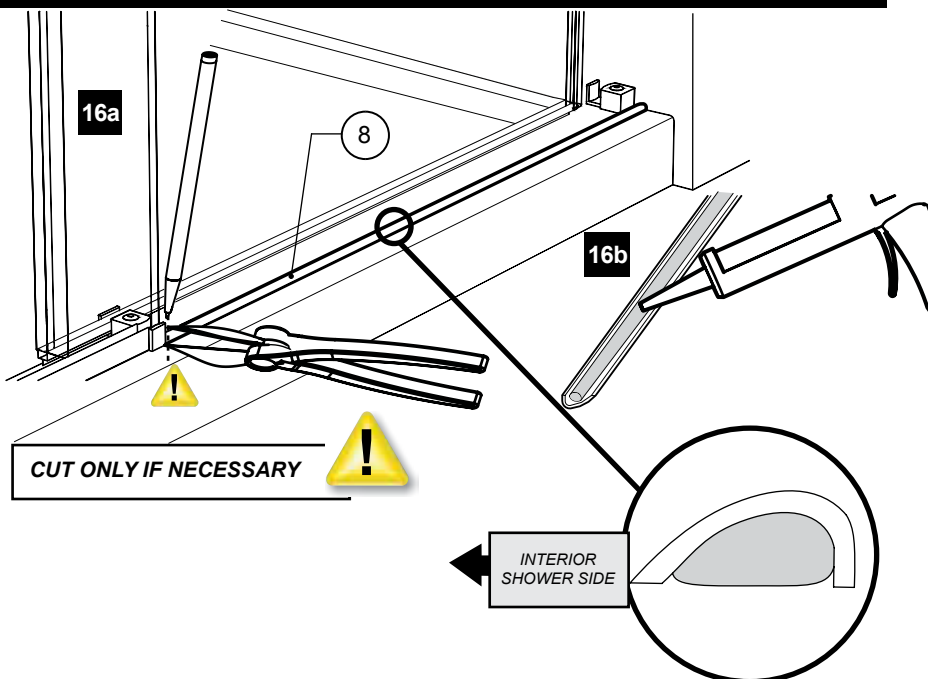
15d Reposition and secure in place with provided screw then cap with screw cap.



16 THRESHOLD

16a Place threshold (8) between wall and bottom guide as shown in figure 16a. Cut off any excess length.

16b Apply silicon on the bottom of threshold as indicated in 16b. Secure threshold in place.



17 SEALING

17a Silicone the outside of the shower unit along the wall jamb and the exterior side of aluminum threshold and U-channel.

17b Wait 24 hours before using the shower to allow silicon to dry.

