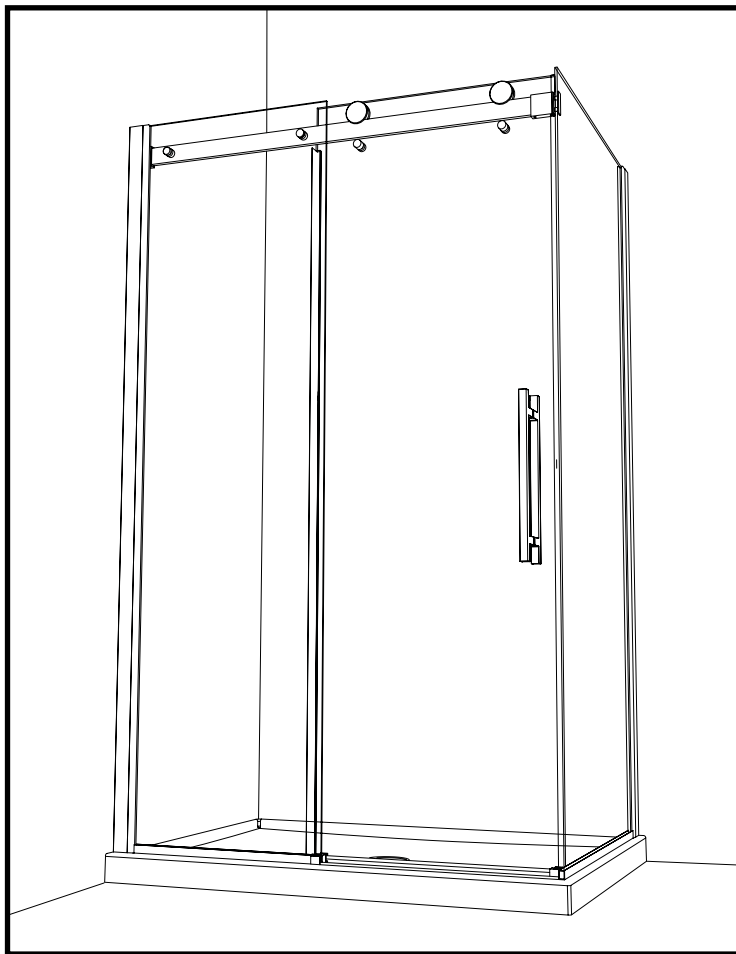


W2-48-75-CRP, W2-60-75-CRP

INSTRUCTION MANUAL

 **ALUMAX**
Kula Collection

SHOWER DOOR



2 PEOPLE REQUIRED



IT IS MANDATORY TO HAVE A WALL STUD ON EACH SIDE OF THE SHOWER UNIT TO SECURELY FASTEN THE RAIL TO THE WALLS.

KW005

GENERAL INSTRUCTIONS

- *Read this manual carefully and completely before proceeding.*
- *It is recommended that you wear safety glasses at all times during the installation.*

INSTALLATION OVER CERAMIC TILES

- *If your shower door is to be installed over ceramic tiles, the tiles should lay completely under the wall jamb.*
- *Silicone should be used to seal the gap where the ceramic tiles meet the fixed panel.*

NOTICE

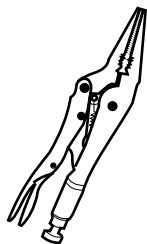
- *Caulking: no sealant is required inside the shower.*
- *Some models are equipped with clear sealing gaskets.*

CARE FOR YOUR SHOWER DOOR

- *Never use scouring powder pads or sharp instruments on metal pieces or glass panels. An occasional wiping down with a mild soap diluted in water is all that is needed to keep the panels and aluminum parts looking new.*
- *We recommend wiping the glass panels with a squeegee after each use.*

PRODUCT SPECIFICATIONS ARE SUBJECT TO CHANGE WITHOUT NOTICE.

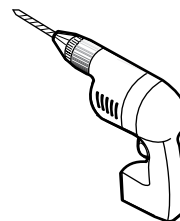
TOOLS AND MATERIAL REQUIRED



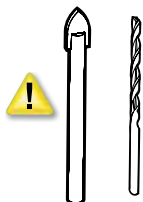
LONG NOSE LOCKING PLIER



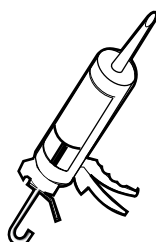
SCREWDRIVERS



DRILL



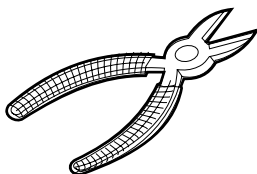
1/4" & 1/8" DRILL BITS



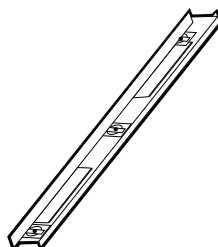
SILICONE



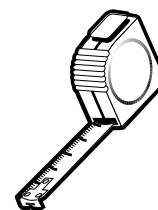
PENCIL



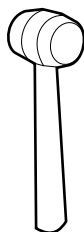
CUTTING PLIER



LEVEL



TAPE MEASURE



MALLET



RUBAN DOUBLE FACE VHB

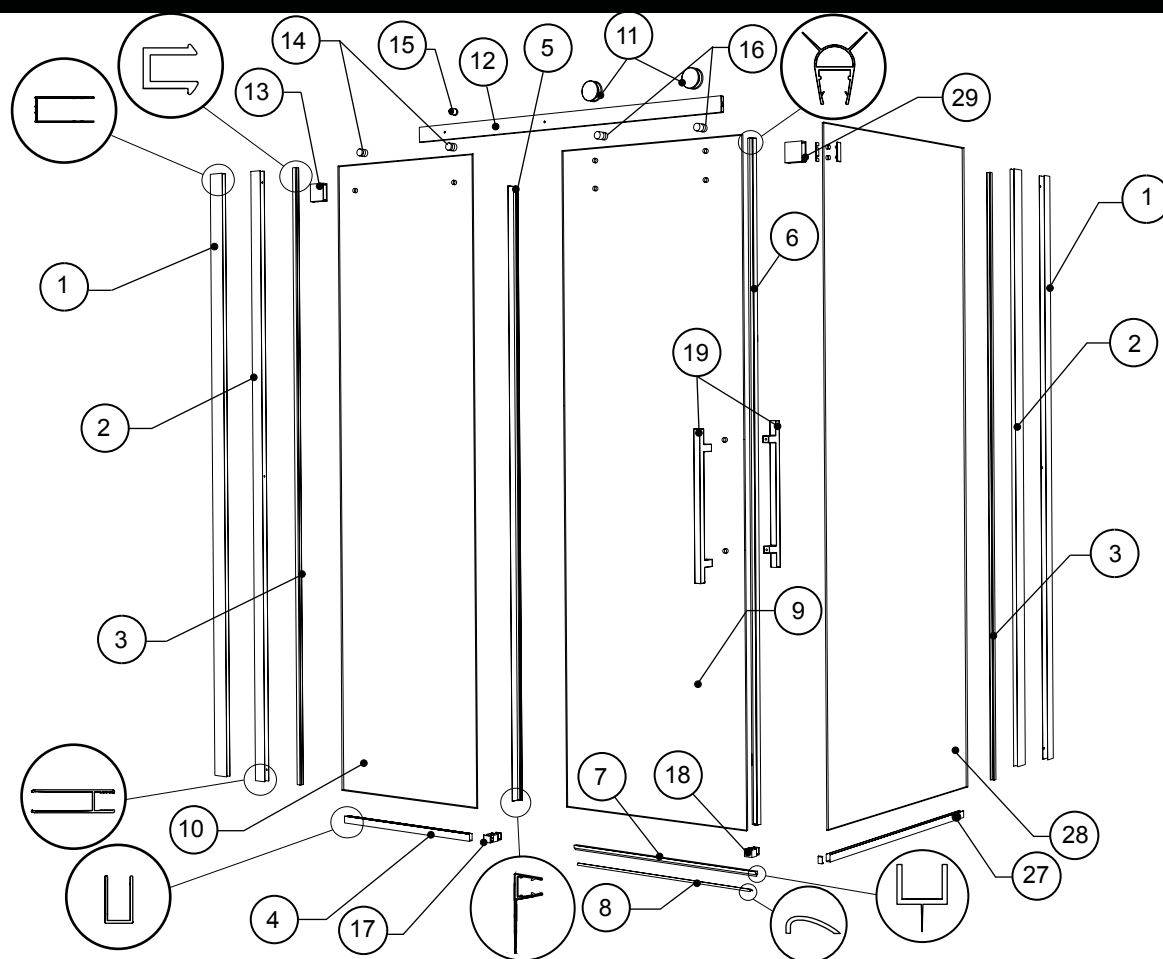


5/16" HEX NUT DRIVER

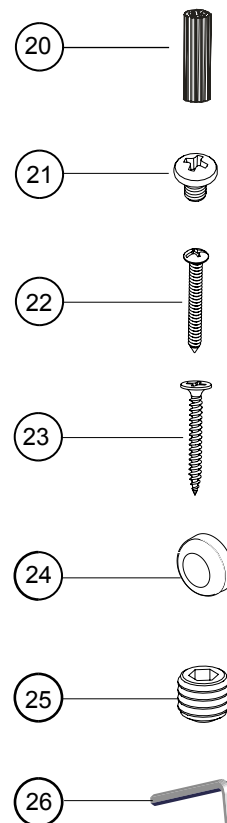


TO INSTALL THE SHOWER DOOR ON CERAMIC TILES, USE A 1/4" DRILL BIT FOR CERAMIC TILES.

PARTS LISTING



HARDWARE



ITEM	PARTS	QTY
1	WALL JAMB	2
2	EXPANDER	2
3	EXPANDER GASKET	2
4	FIXED PANEL U CHANNEL	1
5	MIDGASKET	1
6	DOOR GASKET	1
7	BOTTOM DOOR GASKET	1
8	ALUMINUM THRESHOLD	1
9	DOOR PANEL	1
10	FIXED PANEL	1
11	ROLLERS	2
12	RUNNING RAIL	1
13	WALL MOUNT BRACKET	1
14	GLASS FASTENER	2
15	STOPPER	1
16	ANTI-JUMP	2
17	BOTTOM GUIDE	1
18	DOOR RECEIVER	1
19	DOOR HANDLE	2
20	WALL PLUG	8
21	EXPANDER SCREW	6
22	WALL JAMB SCREW	4
23	FLAT HEAD SCREW	2
24	SCREW CAP	6
25	HEX SOCKET SET SCREW	8
26	HEX KEY 3MM	1
27	RETURN PANEL U CHANNEL	1
28	RETURN PANEL	1
29	GLASS MOUNT BRACKET	1

1 WALL JAMBS INSTALLATION

1a Using the reference table, identify the A and B dimension that relate to your model.

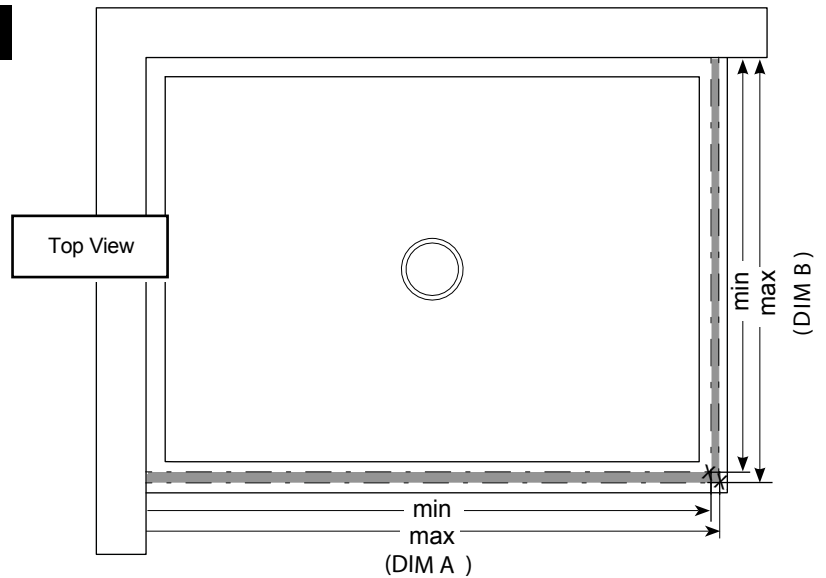
1b Measure and mark on the threshold of the base the minimum and maximum dimensions determined previously. The set points locate the recommended position for the panel installation.

1c Trace a centerline where you would like to install your shower door between the set points and run it up the walls using a level.

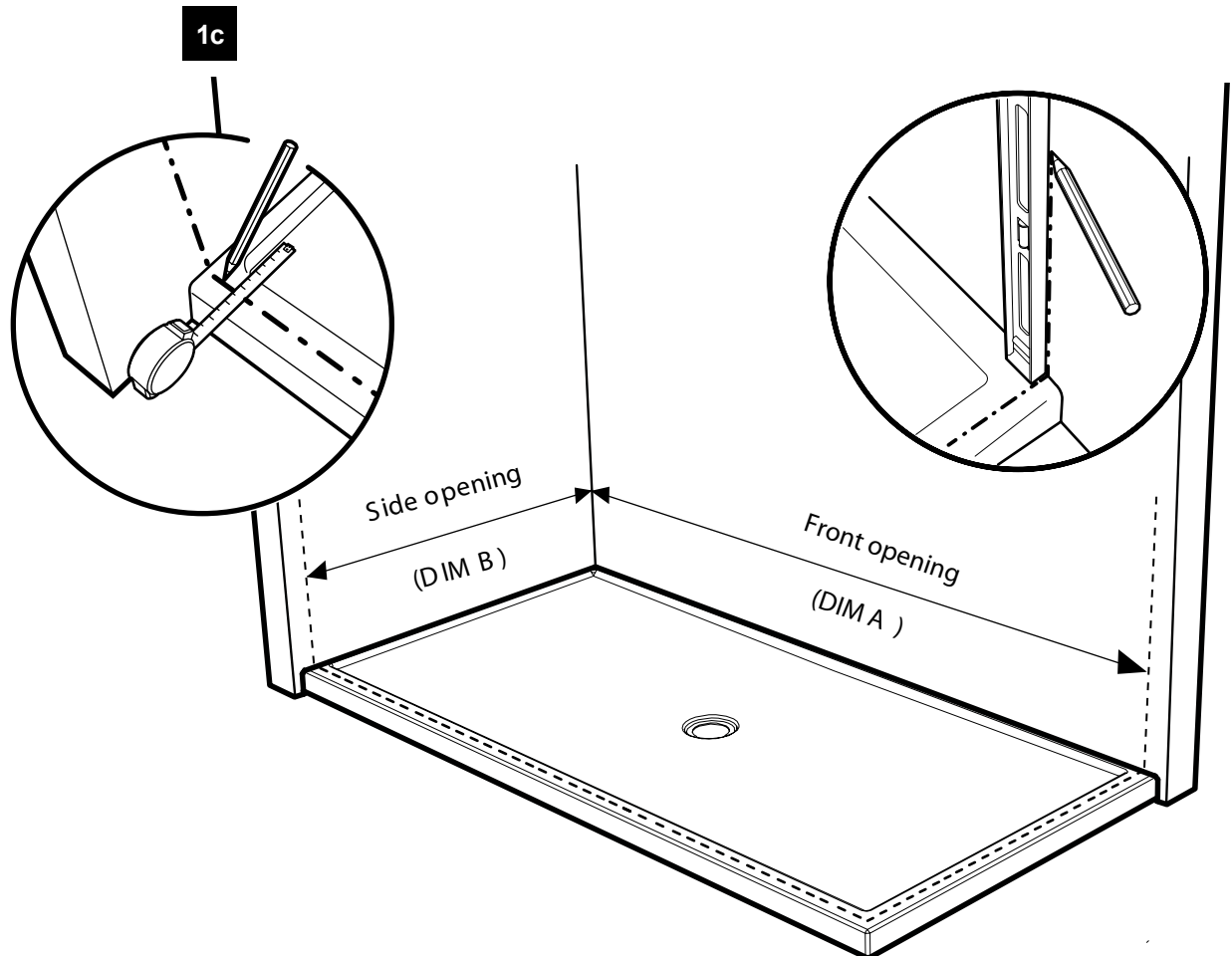
1a

MODEL	DIM A = FRONT OPENING		DIM B = SIDE OPENING	
	MIN	MAX	MIN	MAX
NOV24836-CRP	45"	47 1/4"	32 7/8"	33 7/8"
NOV26036-CRP	57"	59 1/2"	32 7/8"	33 7/8"

1b



1c



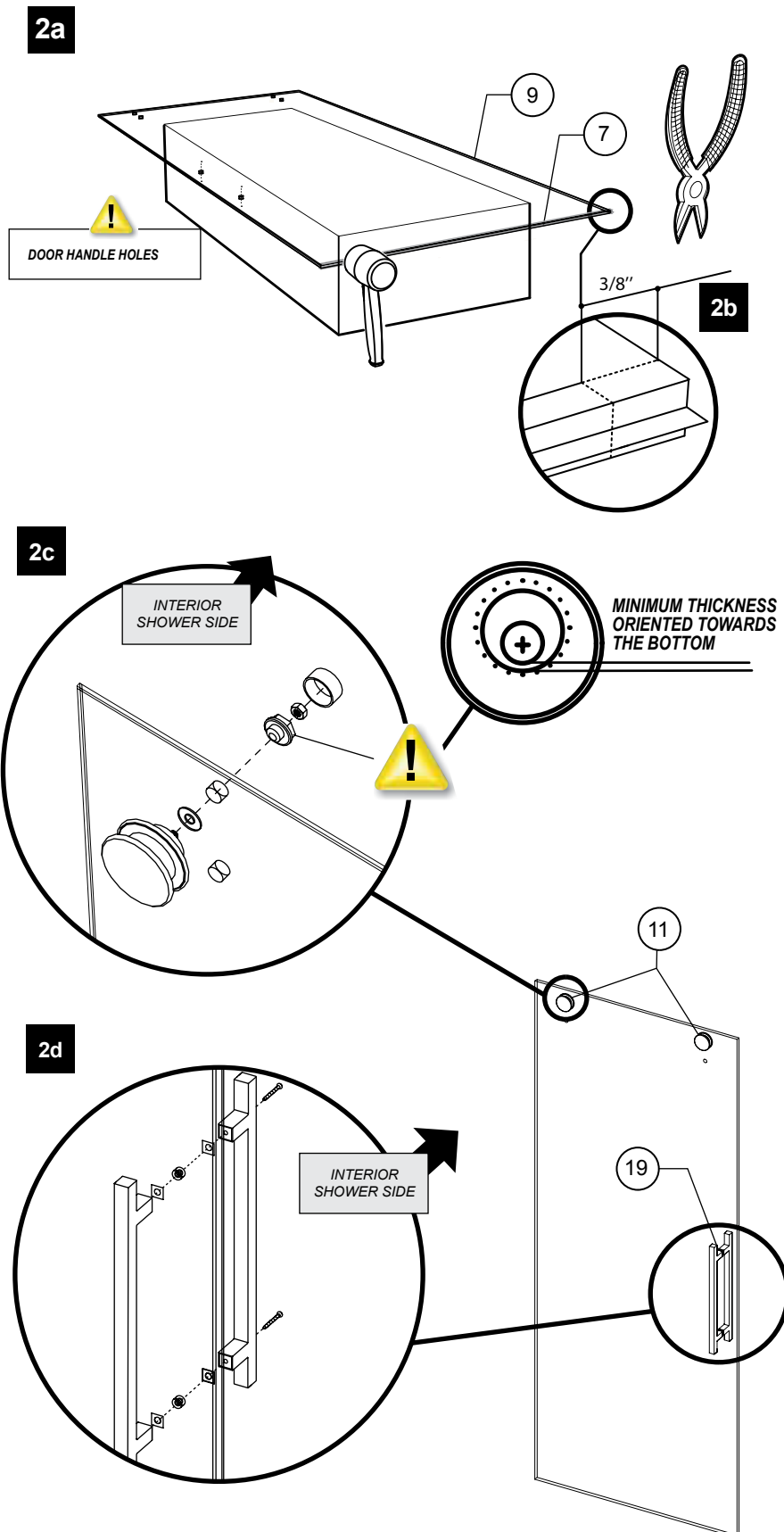
2 DOOR PANEL ASSEMBLY

2a Use a mallet to install bottom gasket (7) on the bottom of the door panel (9). To facilitate installation place door panel on cardboard packaging box and use as platform. Notice the holes are situated at the top of the panel.

2b Measure and cut $3/8$ " off the edge of the gasket. Cut opposing side of door handle holes.

2c Install both rollers (11) through the top holes of the door panel. Be sure that the adjustment wheel is turned to position the minimum thickness of wheel towards the bottom.

2d Install door handle (19). Holes for screws are located on the back handle and must be located in the interior of the shower door.

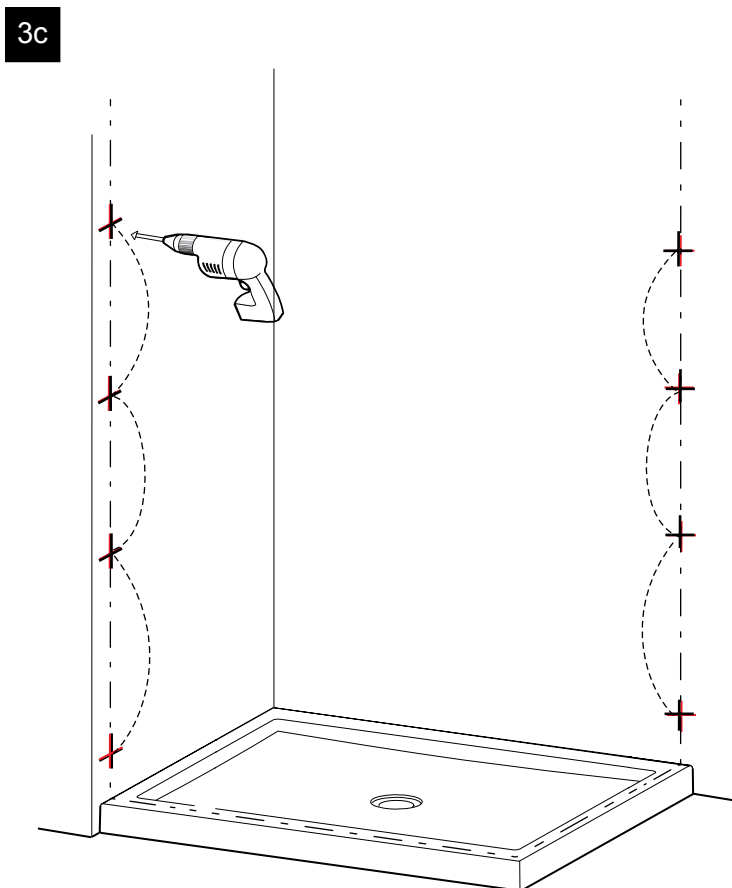
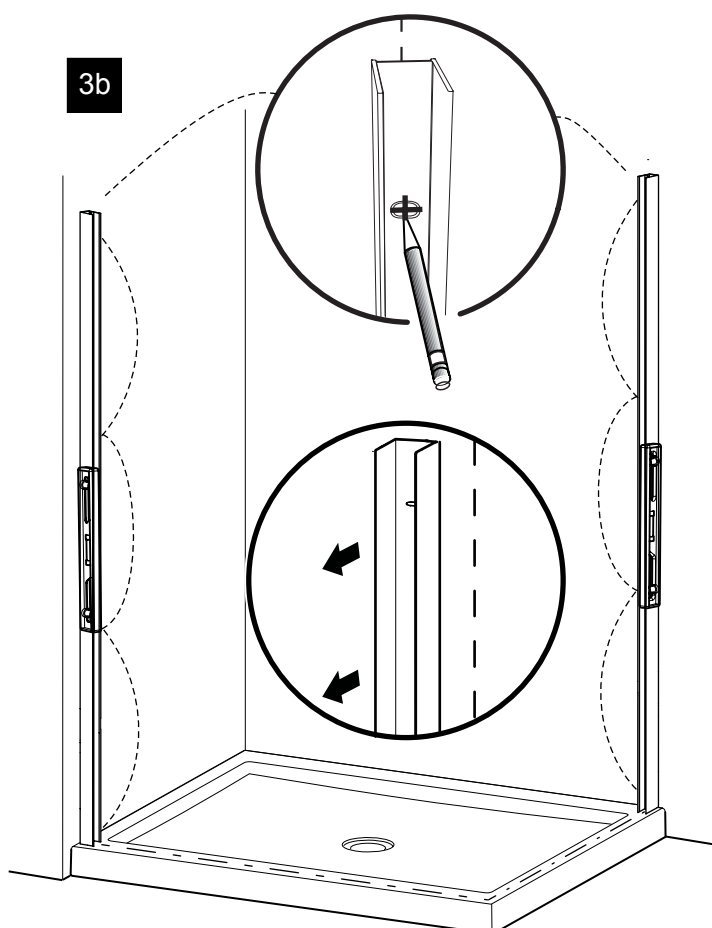
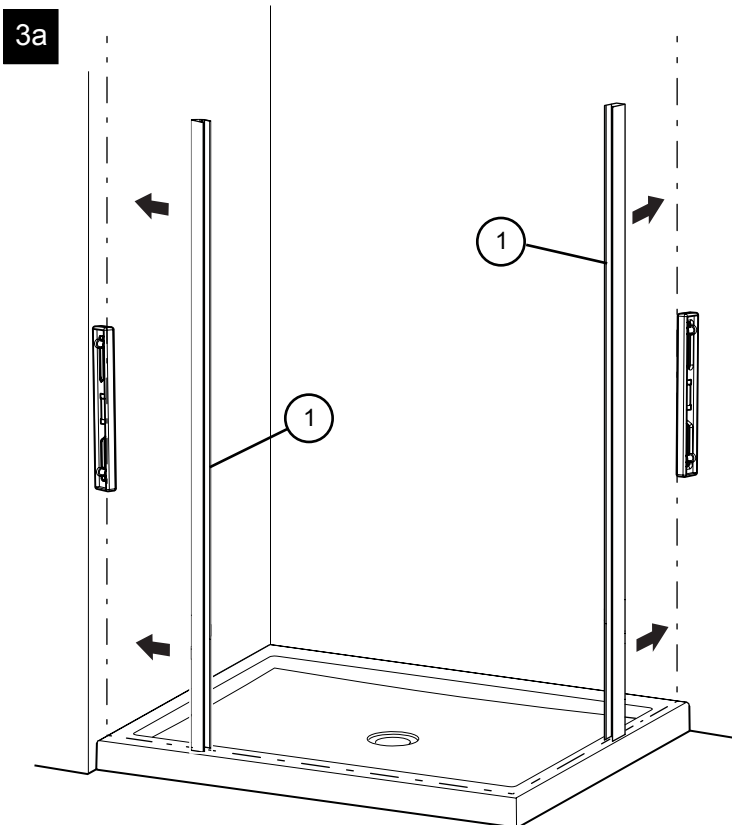


3 WALL JAMB INSTALLATION

3a Place the wall jambs centered on the line marked previously on the threshold in the recommended area for the shower door installation and align them by using a level.

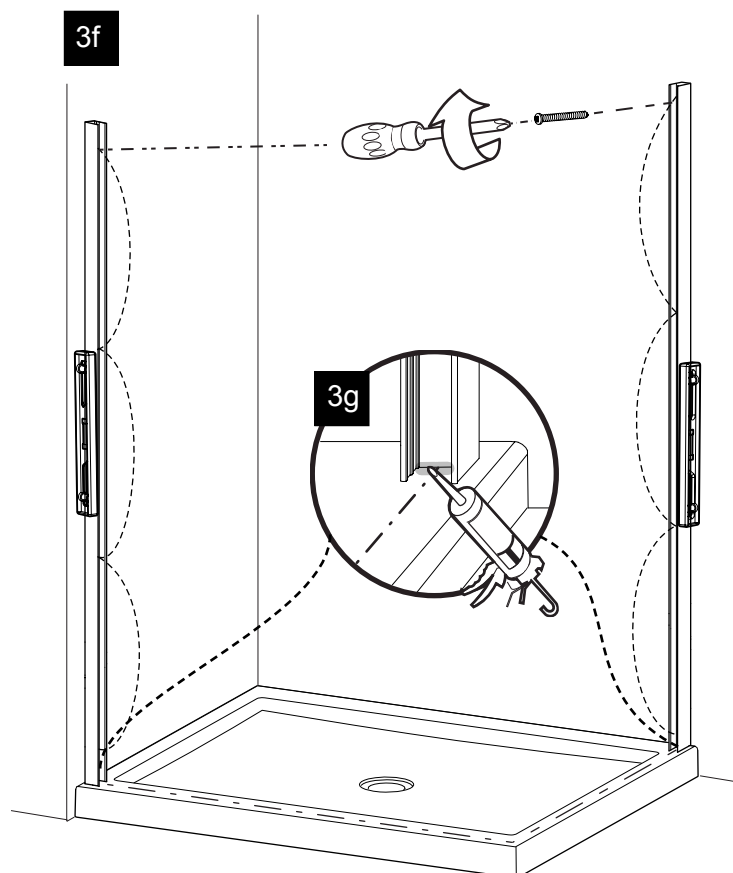
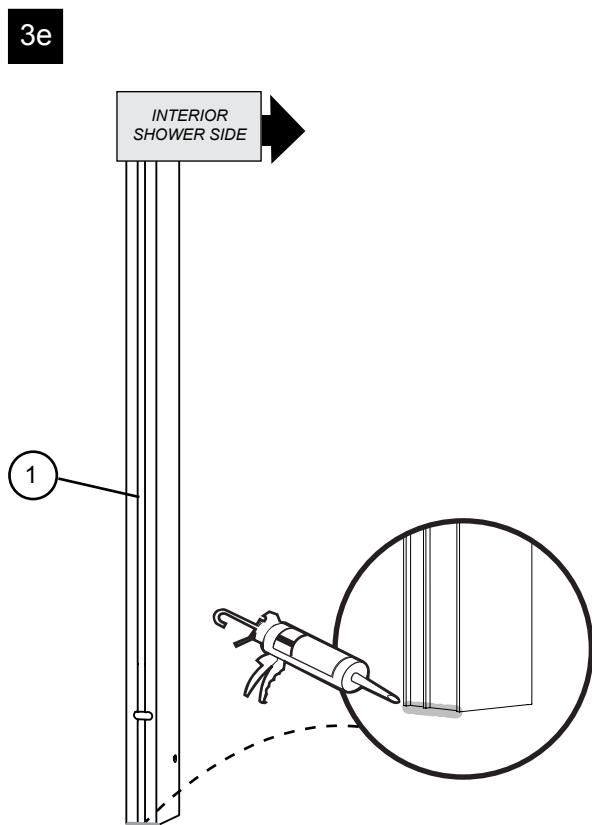
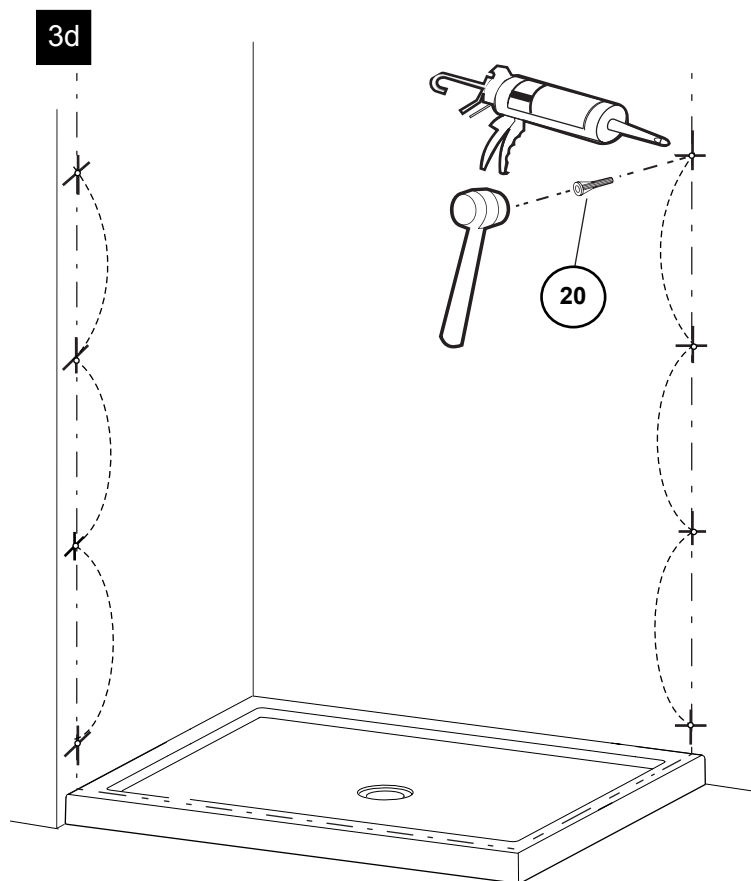
3b Mark the four holes on to the wall on both sides. Remove the wall jambs.

3c Drill the holes in the wall with $\varnothing 1/4"$ drill bit intended for ceramic tiling.



3 WALL JAMB INSTALLATION


- 3d** Insert one drop of silicone in each hole in the wall before inserting the wall plug (x8).
- 3e** Apply silicone at the bottom of the wall jambs on the side that goes against the wall as illustrated.(x2)
- 3f** Reposition the wall jambs on the line marked previously. Ensure verticality with the level. Screw the wall jamb on to the wall using the screws 1 3/8" (x8).
- 3g** Apply silicone on the inside of the wall jambs as illustrated.

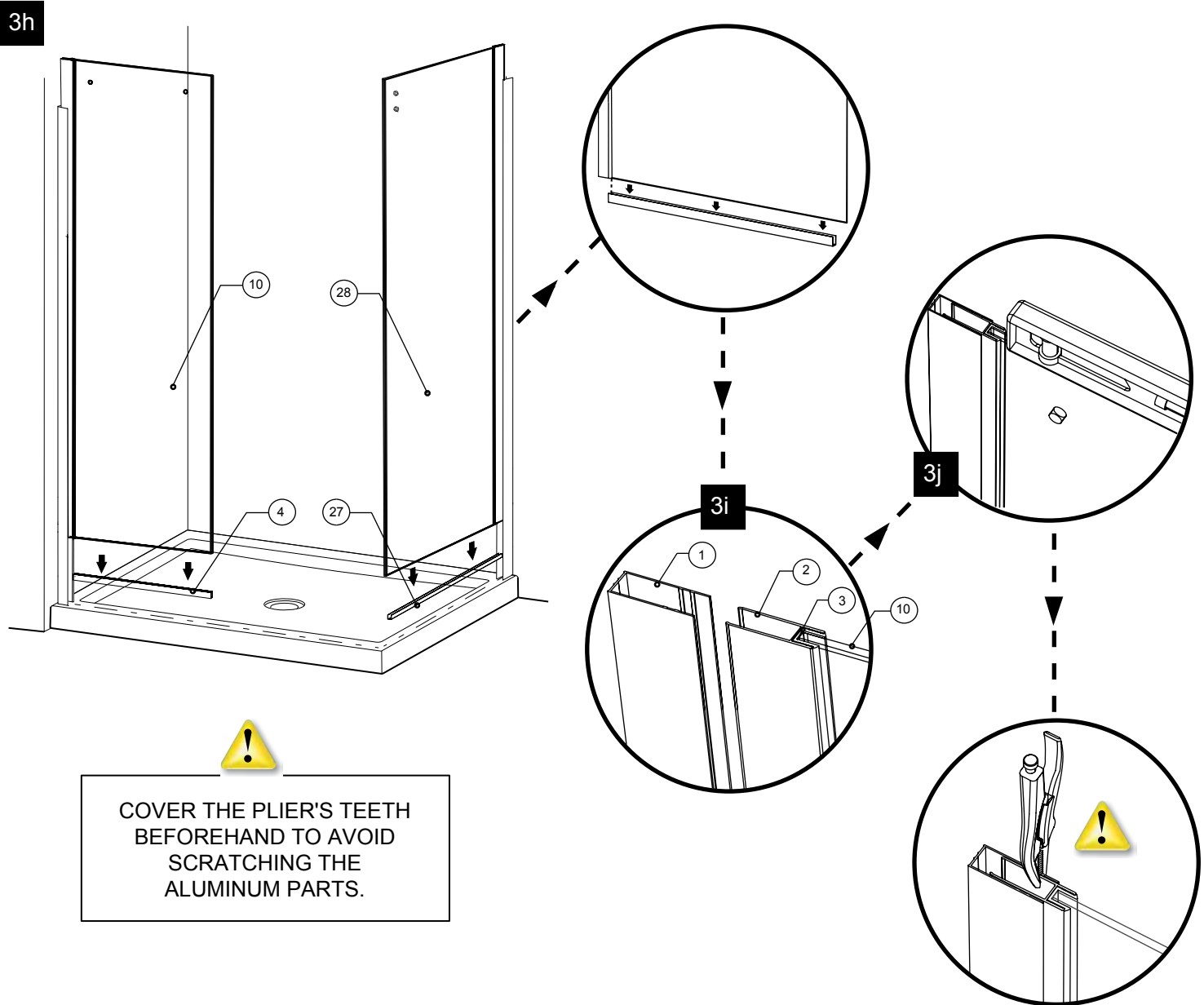


3 WALL JAMB INSTALLATION

3h Place U-Channels temporarily on the bottom of fix panel (10) and return panel (28).

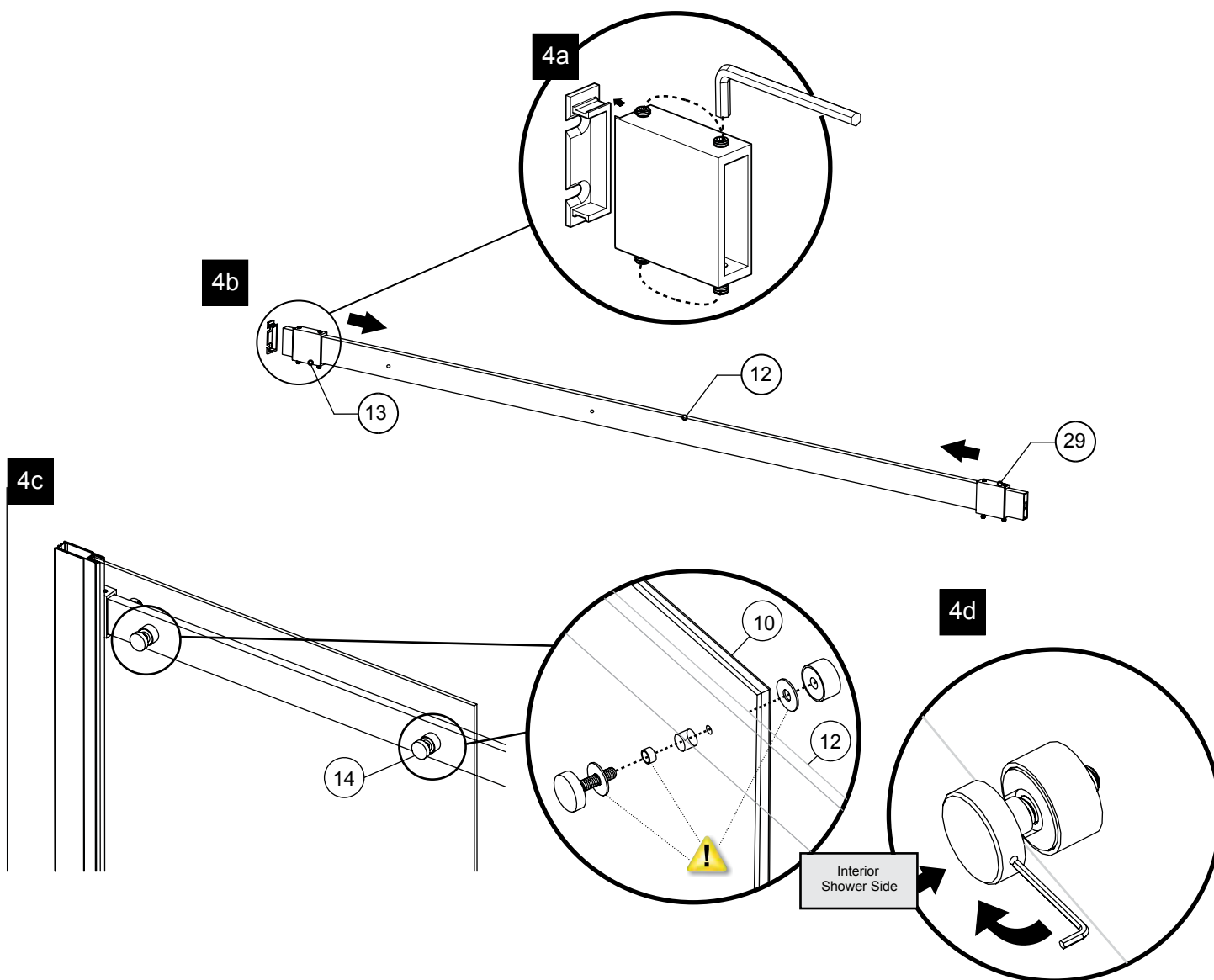
3i Slide the fix panel and the return panel pre-assembled with expander (2) and gasket (3) into the wall jambs (1).

3j Level the glass panel assembly with the wall jamb. Lock into position by clamping the wall jamb and expander with pliers. 



4 RUNNING RAIL INSTALALTION

- 4a** Unfasten set screws (x4) from wall bracket (13) and glass mount bracket (29). Then remove back plate from the wall bracket and set aside.
- 4b** With back plates of the wall and glass brackets removed, slide the wall brackets away from the ends of the running rail (12)
- 4c** Align running rail holes with holes in fix panel. Install glass fasteners (14) to join fix panel (10) and rail (12). Be sure to place gaskets between all contact with glass and metal parts.
- 4d** Fasten with hex 3mm key.



4 RUNNING RAIL INSTALLATION

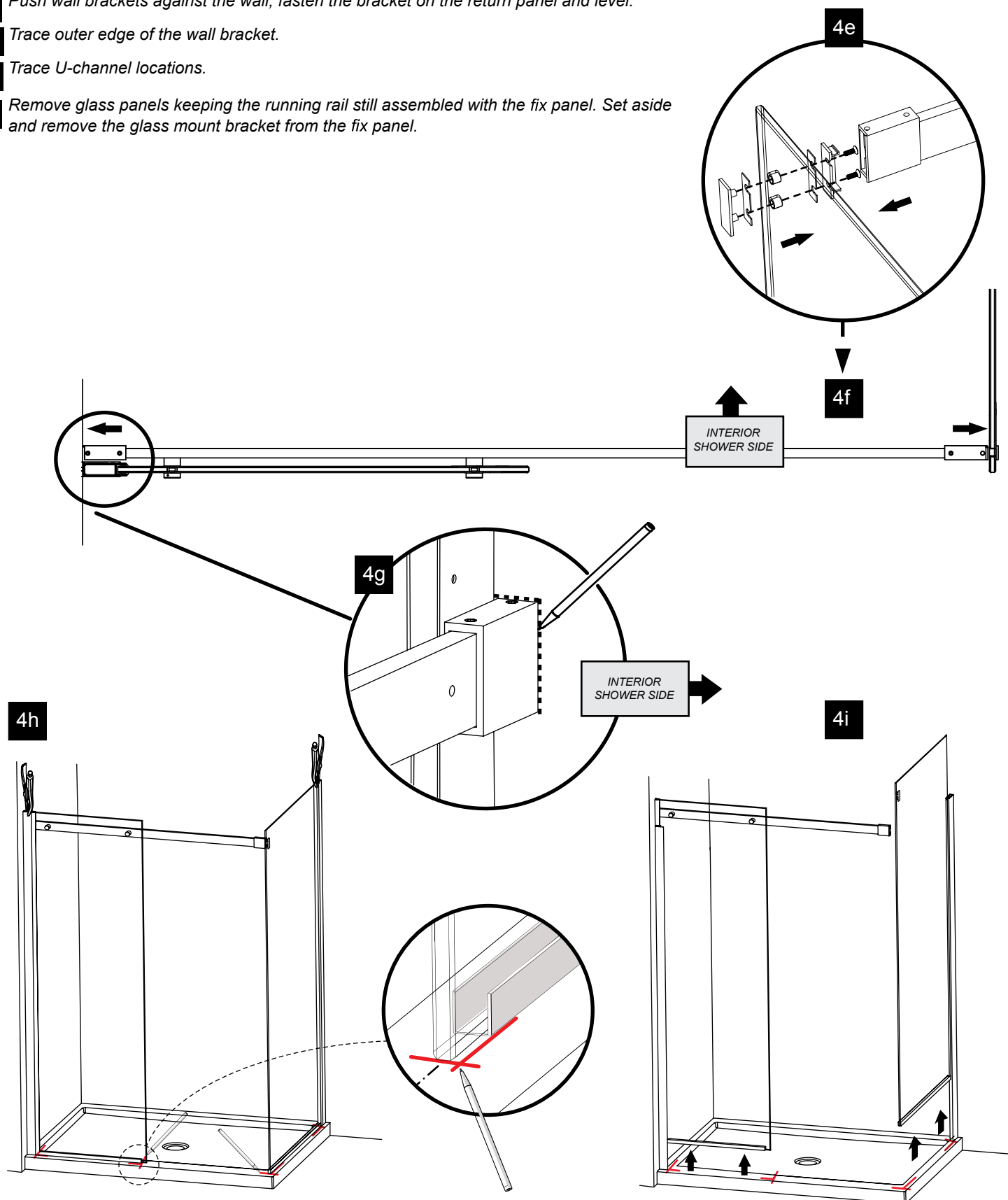
4e Install the glass mount bracket.

4f Push wall brackets against the wall, fasten the bracket on the return panel and level.

4g Trace outer edge of the wall bracket.

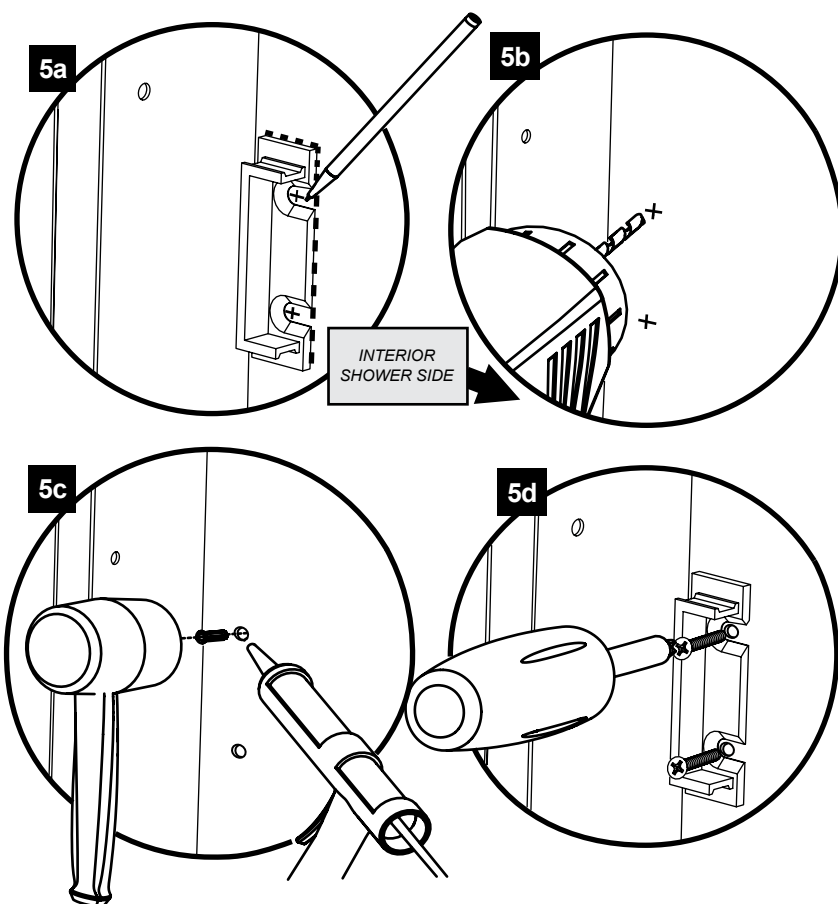
4h Trace U-channel locations.

4i Remove glass panels keeping the running rail still assembled with the fix panel. Set aside and remove the glass mount bracket from the fix panel.





5 WALL BRACKET BACK PLATE

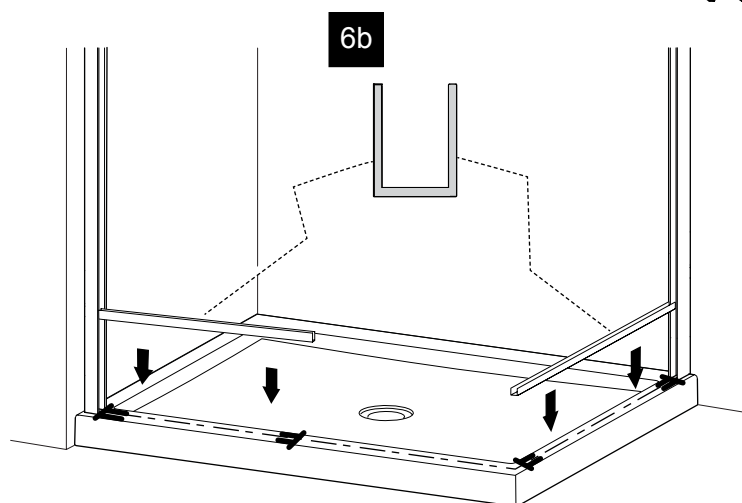
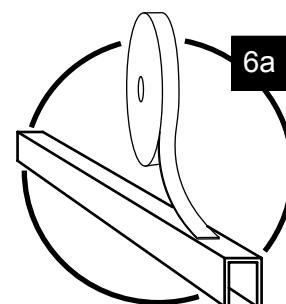
- 5a** Align back plate of wall bracket to previously traced mark on wall. Trace hole centers to determine drilling location. (x2)
- 5b** Drill marked holes in walls by using the 1/4" drill bit.
- 5c** Insert one drop of silicone in each hole bored in the wall before inserting the wall plugs.
- 5d** Screw in flat head screws through holes to secure back plate of bracket to wall (x2)



6 U-CHANNEL

- 6a** Apply double sided VHB tape to bottom of both U-channels. 
- 6b** Align U-channel with previously marked line.  and press them down to secure to the base.

CLEAN BOTTOM OF U-CHANNEL AND BASE BEFORE APPLYING DOUBLE SIDED VHB TAPE TO UNDERSIDE OF U-CHANNEL.



7 BOTTOM GUIDE

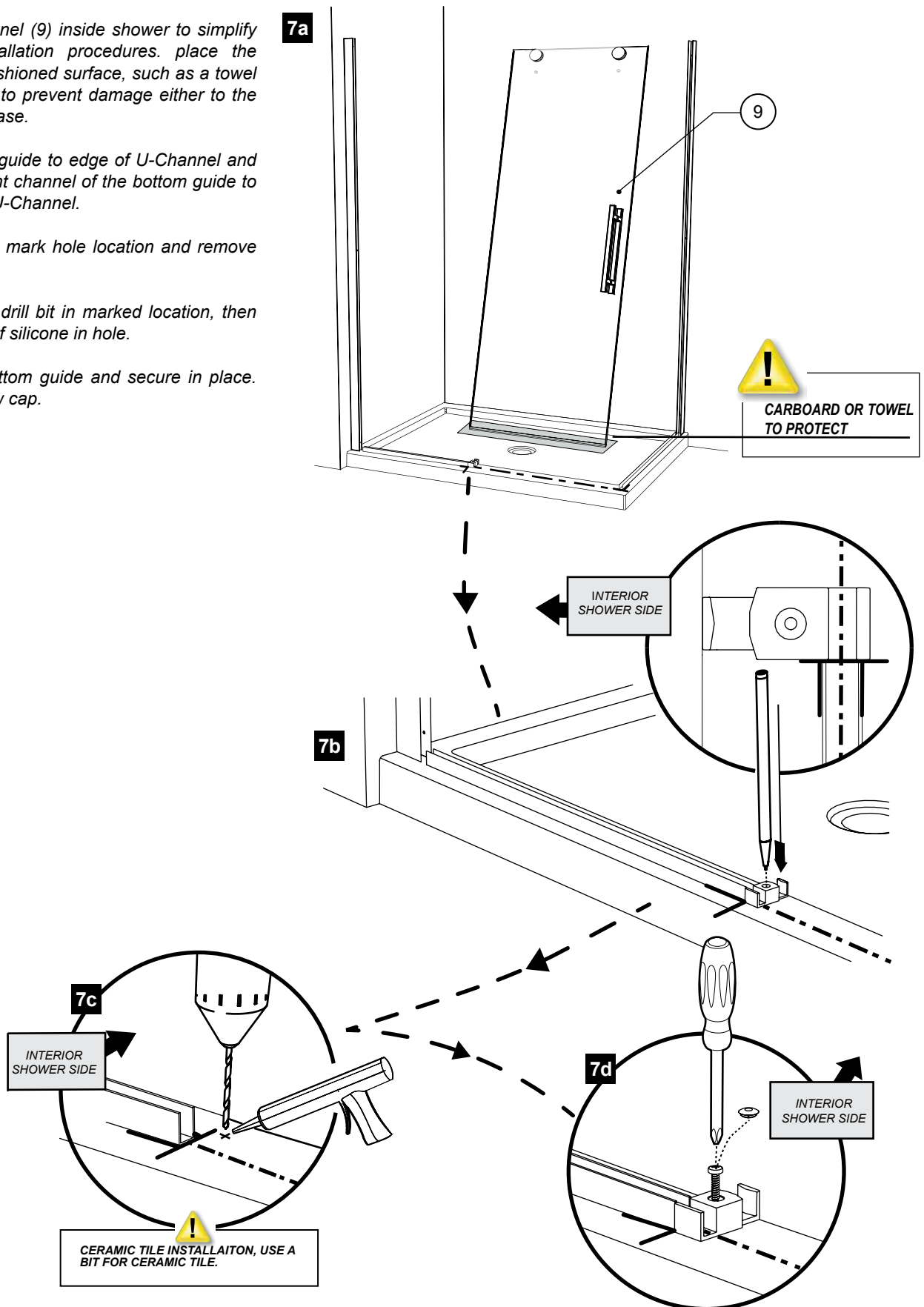
7a Place door panel (9) inside shower to simplify following installation procedures. place the panel on a cushioned surface, such as a towel or cardboard, to prevent damage either to the panel or the base.

7b Place bottom guide to edge of U-Channel and center the front channel of the bottom guide to the center of U-Channel.

7c Once in place mark hole location and remove bottom guide.

7d Drill with 1/8" drill bit in marked location, then apply a drop of silicone in hole.

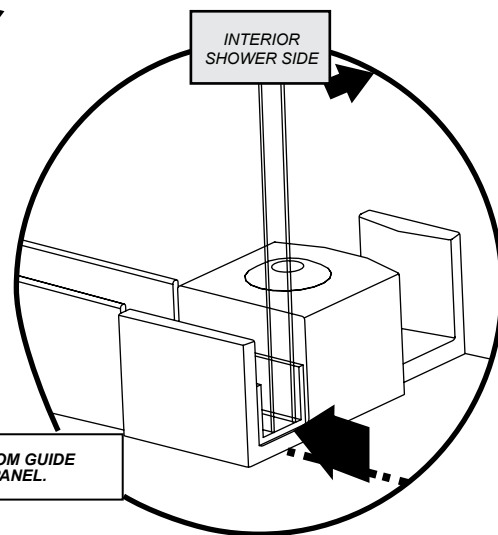
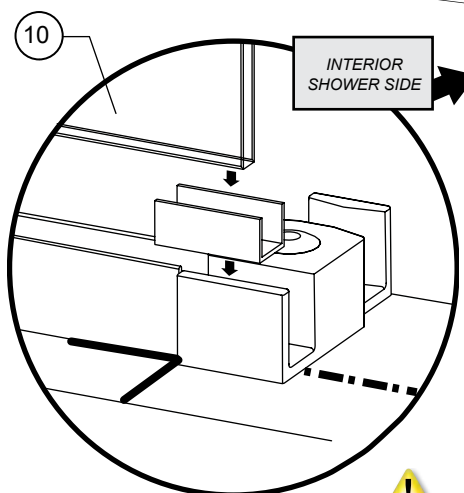
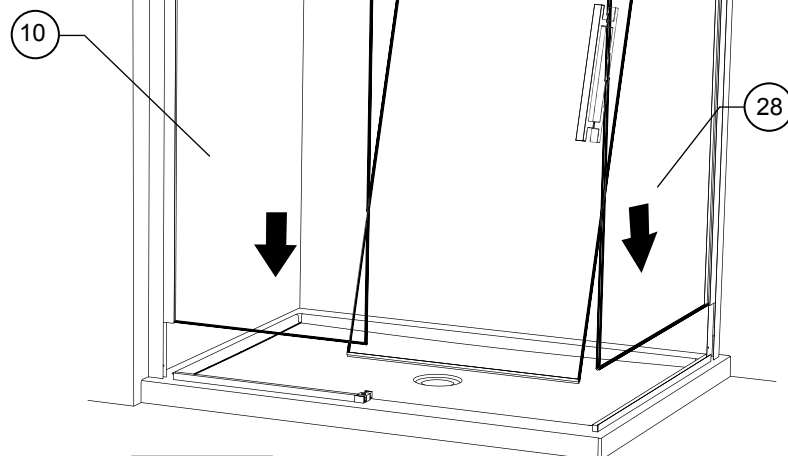
7e Reposition bottom guide and secure in place. Top with screw cap.



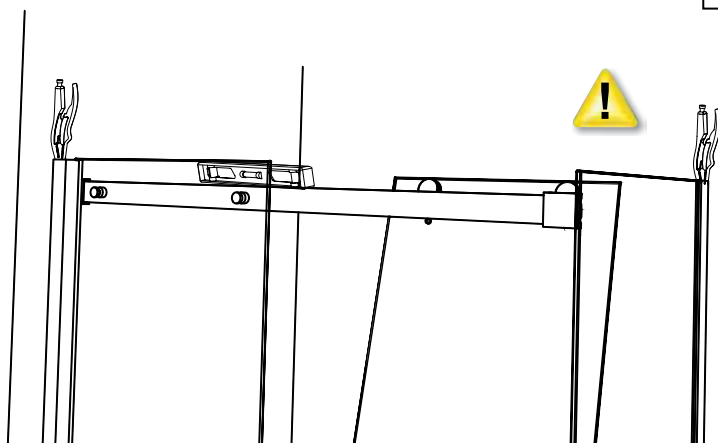
8 PANNEL INSTALLATION

8a Reinstall fix panel as well as the return panel. Be sure to level panels and align fix panel edge with end of bottom guide.

8b Lock into position by clamping the wall jambs and expanders with pliers. ⚠



⚠
PLACE GASKET IN BOTTOM GUIDE
BEFORE INSTALLING FIX PANEL.

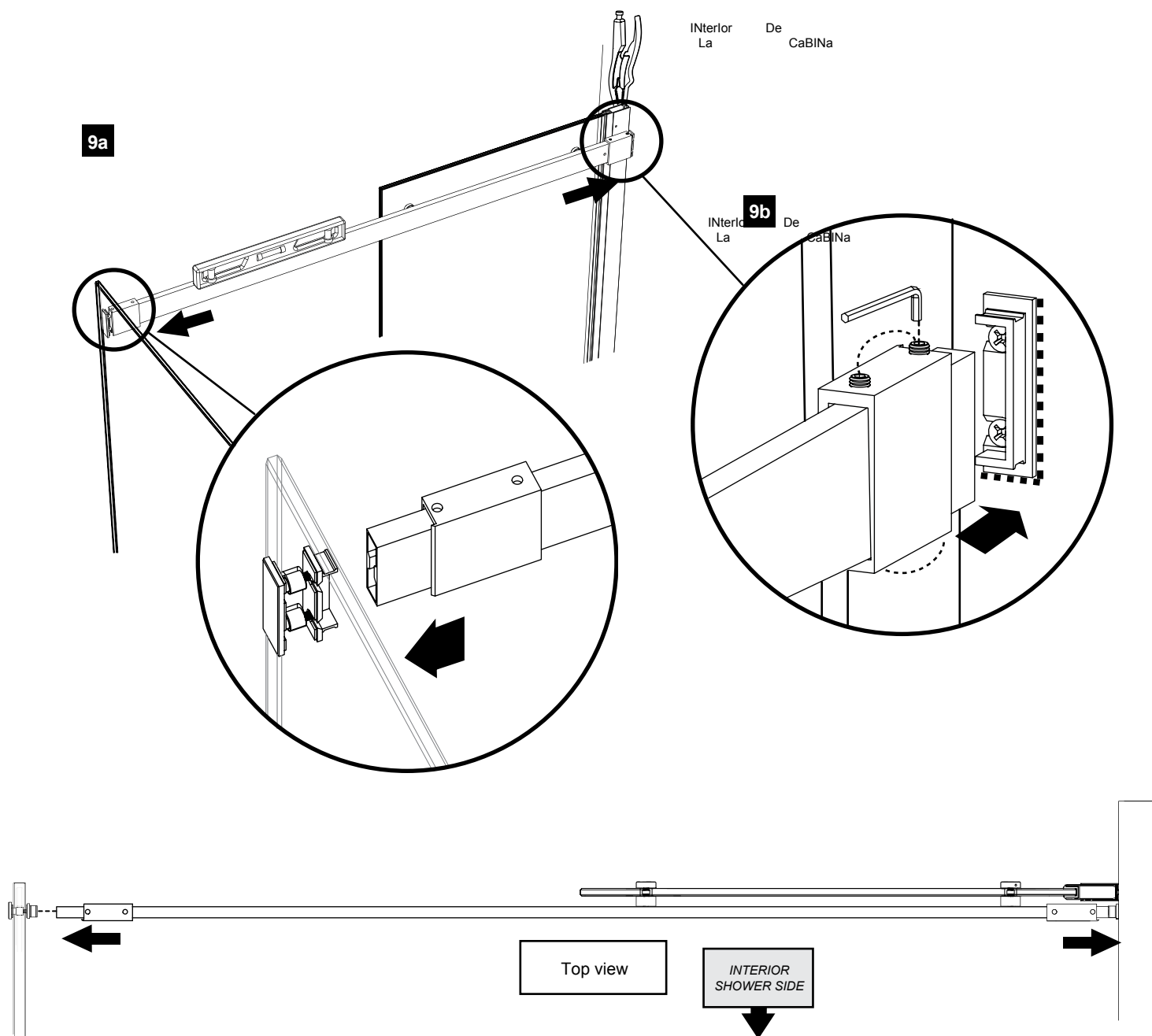


⚠
COVER THE PLIER'S TEETH BEFOREHAND TO AVOID
SCRATCHING THE ALUMINUM PARTS.

9 RUNNING RAIL

9a Push wall brackets towards wall and lock in with back plate previously secured to wall. Repeat on opposite side with glass bracket.

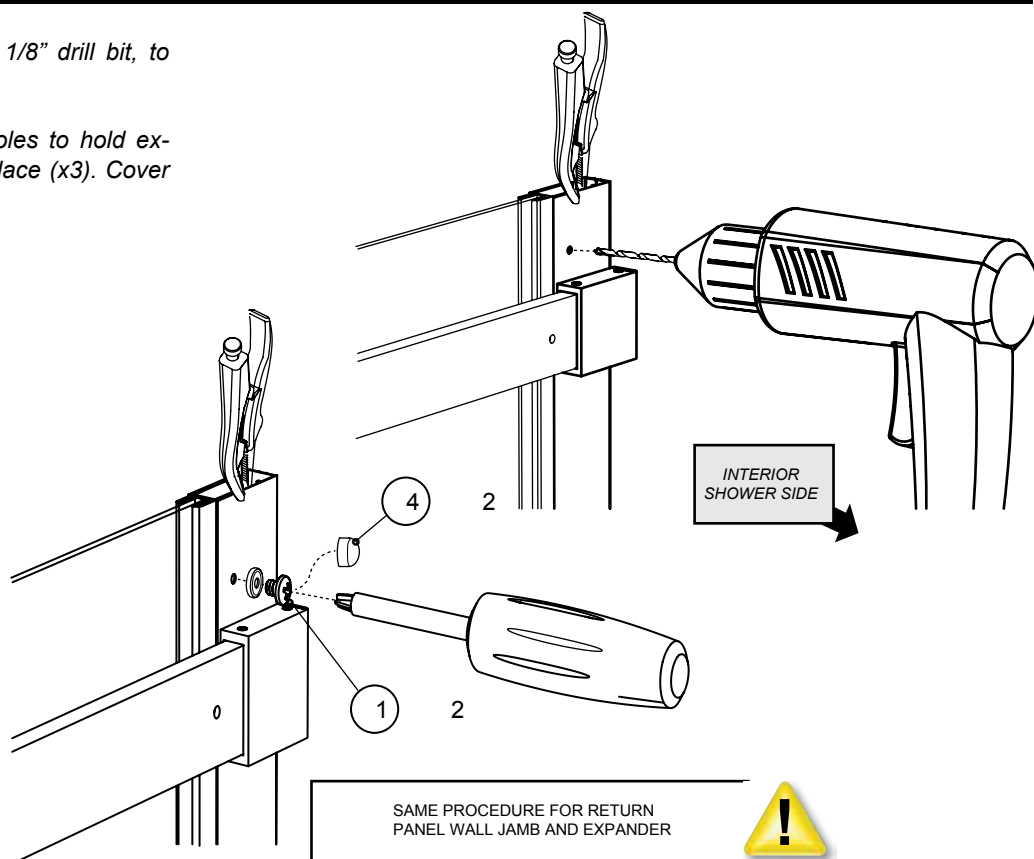
9b Tighten set screws to secure in place with provided allen key. (X8)



10 WALL JAMB AND EXPANDER

10a Drill through wall jamb holes with 1/8" drill bit, to pierce through the expander. (x3)

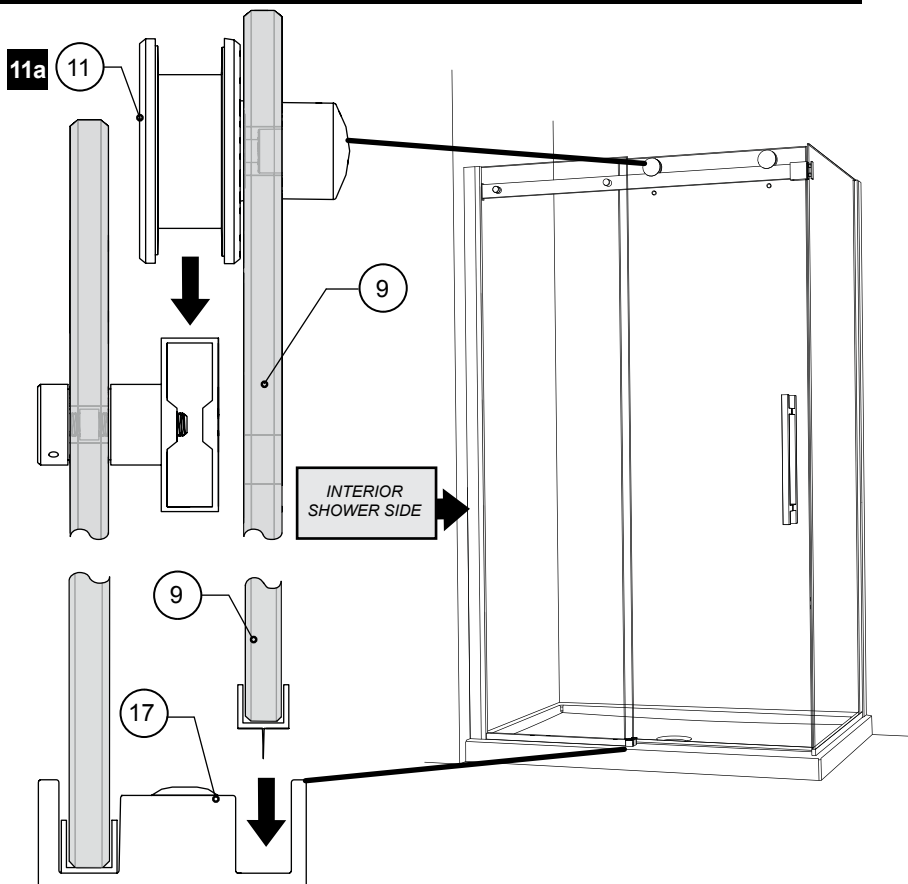
10b Screw 3/4" screws (21) through holes to hold expander and wall jamb together in place (x3). Cover all screws with screw caps (24).



11 DOOR PANEL INSTALLATION

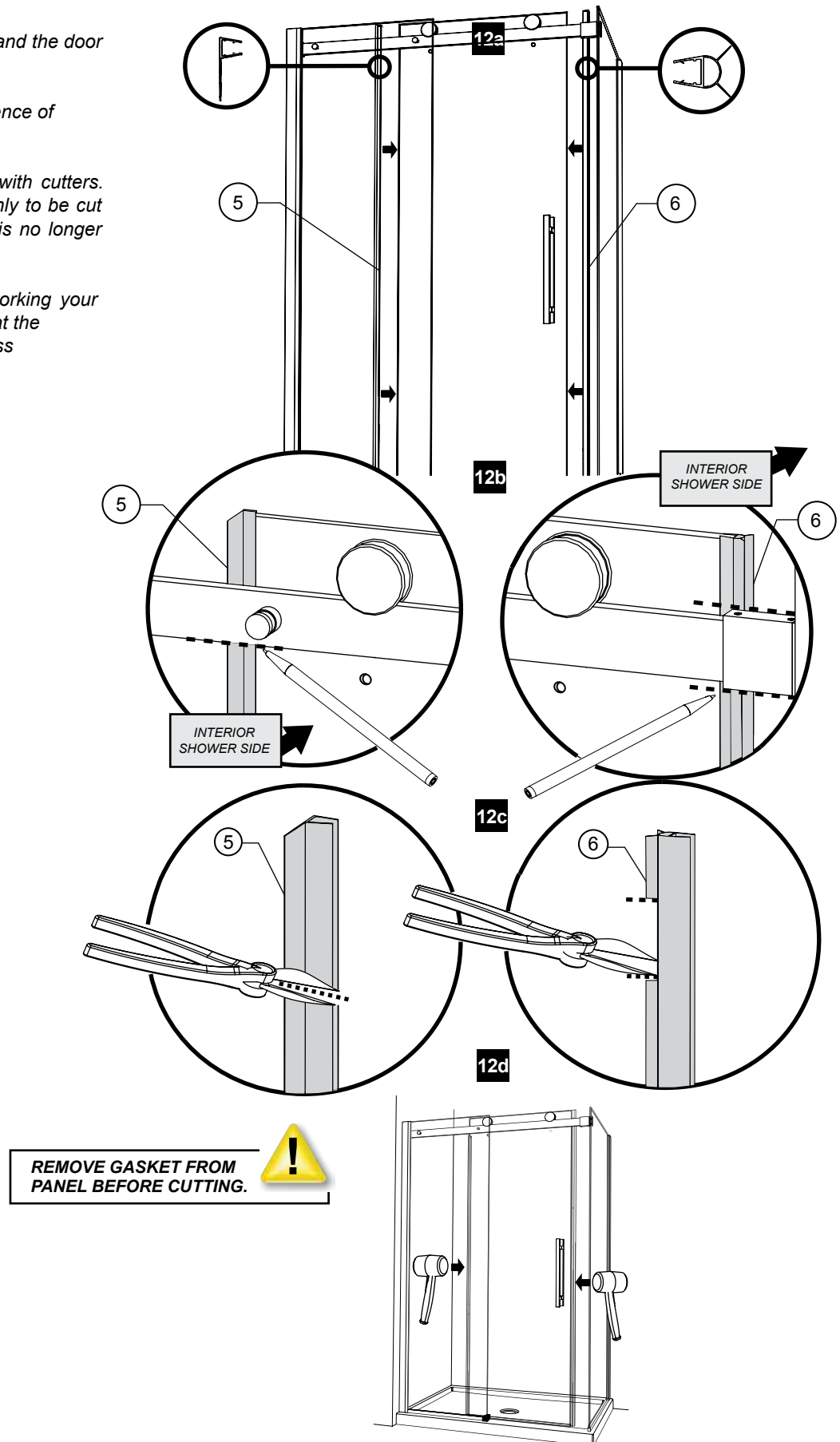
11a Install door panel (9) by aligning the rollers (11) on running rail (12) and by aligning the door panel (9) with the back channel of bottom guide (17).

11b Slide door to insure a smooth stable glide.



12 | DOOR GASKETS

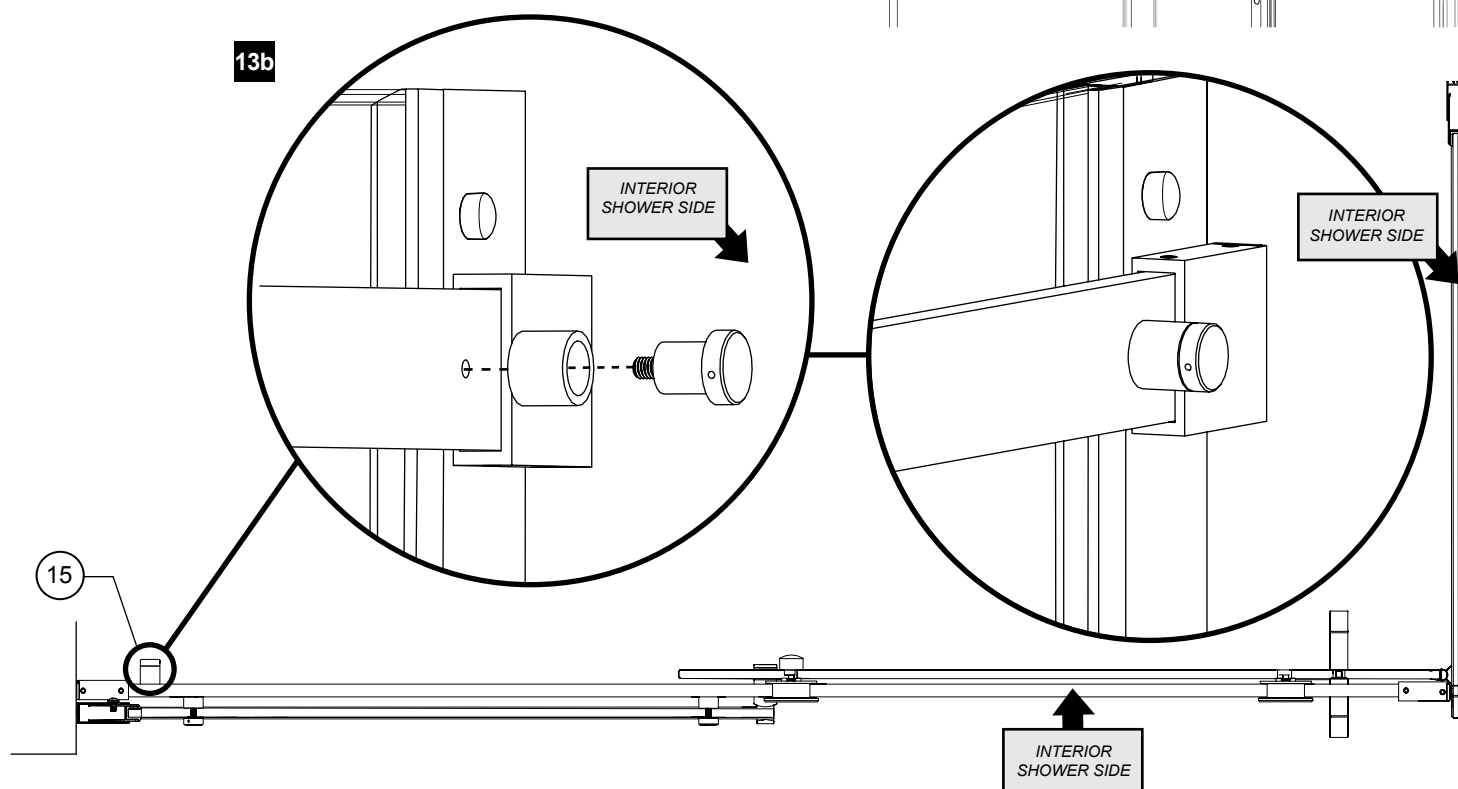
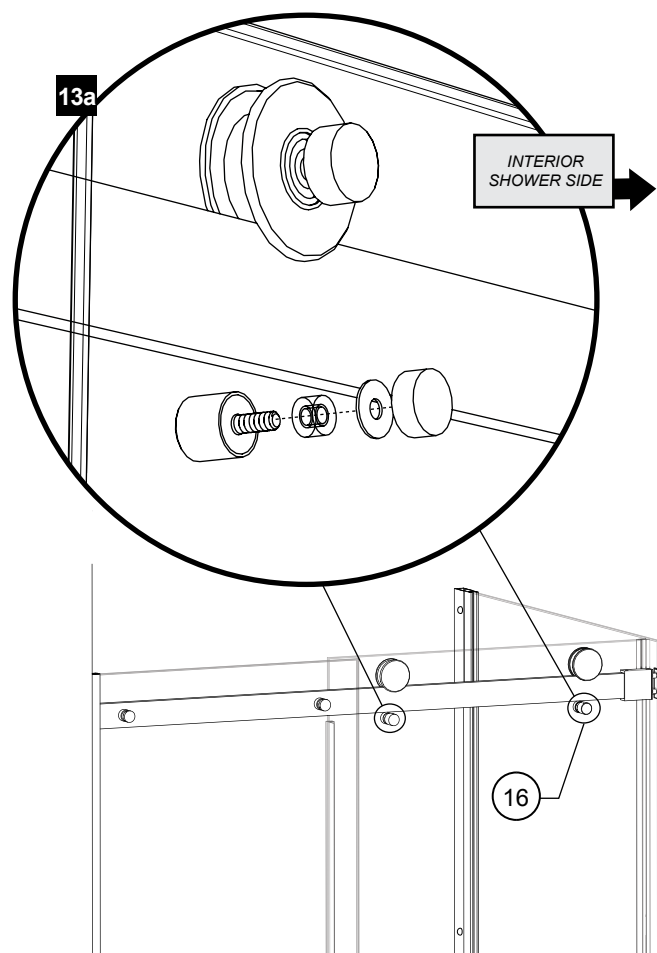
- 12a** Temporarily install midgasket (5) and the door gasket (6) to door panel.
- 12b** Close door entirely, mark interference of gaskets with running rail.
- 12c** Cut gasket at marked locations with cutters. Note that midgasket (5) needs only to be cut below running rail. The top part is no longer required for assembly.
- 12d** Reinstall gaskets from bottom working your way up. Use a mallet to insure that the gaskets are fully pushed onto glass panel door.



13 ANTI-JUMP & DOOR STOPPER

13a Install Anti-Jump (16) in lower holes of door panel located below the running rail. Be sure to place the gaskets between the contact of glass and aluminium parts. (x2)

13b Install door stopper (15) located in the interior shower next to wall jamb. Use hole provided in running rail.



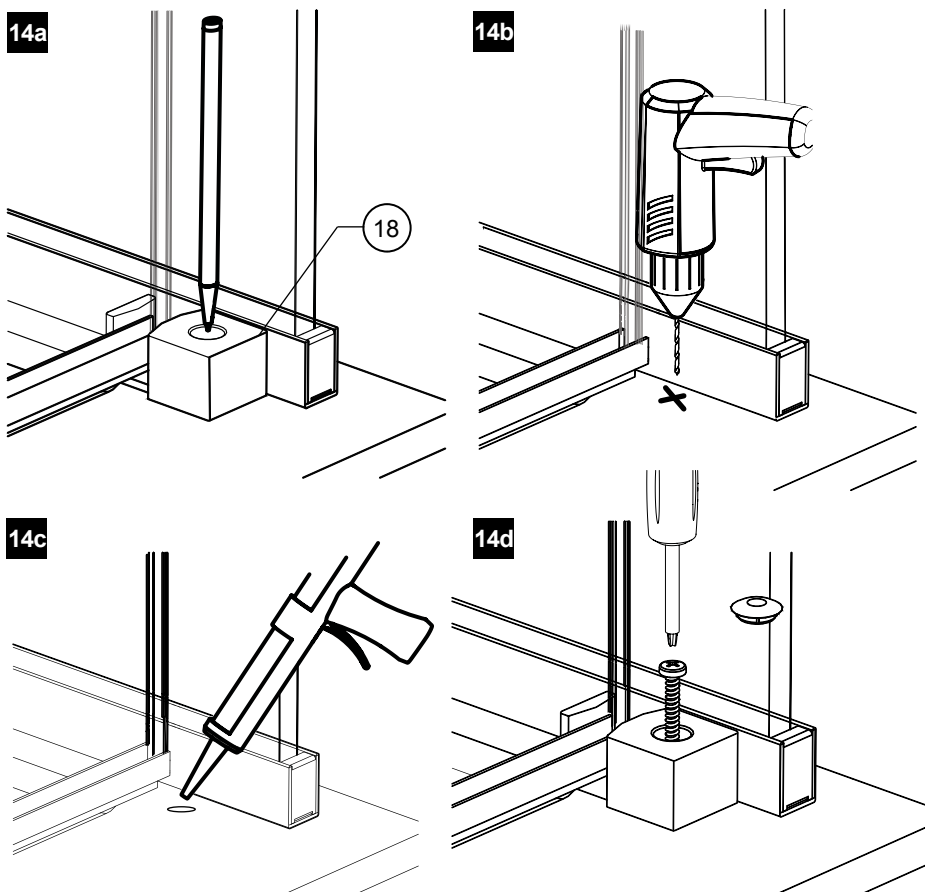
14 DOOR RECEIVER INTALLATION

14a place door receiver (18) against wall, place so that the door panel slides smoothly into receiver. mark hole location.

14b remove door receiver and drill in marked location with 1/8" drill bit.

14c Insert one drop of silicone into hole.

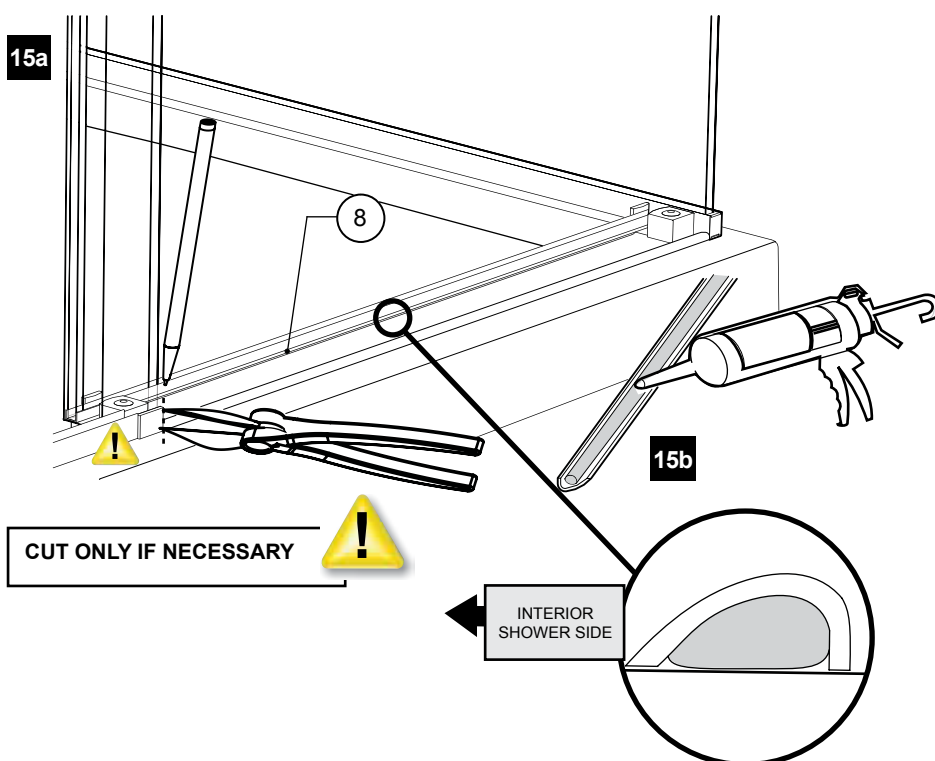
14d reposition and secure in place with provided screw then cap with screw cap.



15 THRESHOLD

15a place threshold (8) between return panel u-channel and bottom guide as shown in figure 15a. Cut off any excess length.

15b apply silicon on the bottom of threshold as indicated in 15b. Secure threshold in place.



16 SEALING

16a Silicone the outside of the shower unit along the wall jamb and the exterior side of aluminum threshold and -channel.

16b Wait 24 hours before using the shower to allow silicon to dry.

