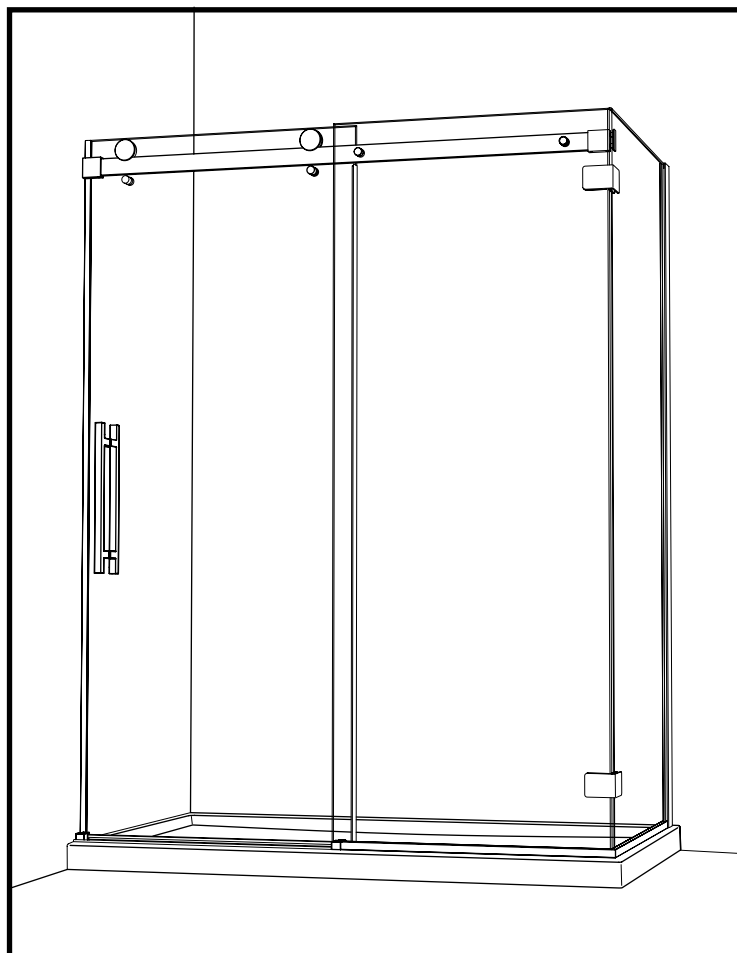


W2-48-75-CW, W2-60-75-CW

INSTRUCTION MANUAL

 **ALUMAX**
Kula Collection

SHOWER DOOR - PORTE DE DOUCHE



2 PEOPLE REQUIRED



IT IS MANDATORY TO HAVE A WALL STUD ON EACH SIDE OF THE
SHOWER UNIT TO SECURELY FASTEN THE RAIL TO THE WALLS.

KW004

GENERAL INSTRUCTIONS

- *Read this manual carefully and completely before proceeding.*
- *It is recommended that you wear safety glasses at all times during the installation.*

INSTALLATION OVER CERAMIC TILES

- *If your shower door is to be installed over ceramic tiles, the tiles should lay completely under the wall jamb.*
- *Silicone should be used to seal the gap where the ceramic tiles meet the fixed panel.*

NOTICE

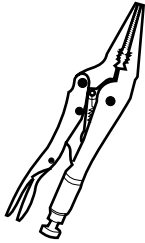
- *Caulking: no sealant is required inside the shower.*
- *Some models are equipped with clear sealing gaskets.*

CARE FOR YOUR SHOWER DOOR

- *Never use scouring powder pads or sharp instruments on metal pieces or glass panels. An occasional wiping down with a mild soap diluted in water is all that is needed to keep the panels and aluminum parts looking new.*
- *We recommend wiping the glass panels with a squeegee after each use.*

PRODUCT SPECIFICATIONS ARE SUBJECT TO CHANGE WITHOUT NOTICE.

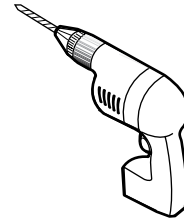
TOOLS AND MATERIAL REQUIRED



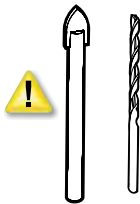
LONG NOSE LOCKING PLIER



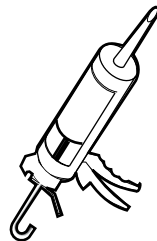
SCREWDRIVERS



DRILL



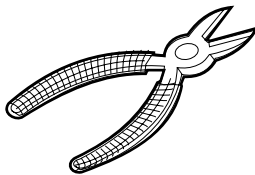
1/4" & 1/8" DRILL BITS



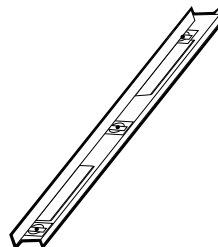
SILICONE



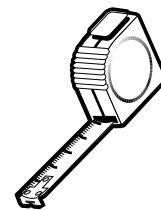
PENCIL



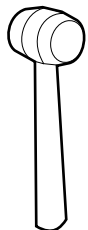
CUTTING PLIER



LEVEL



TAPE MEASURE



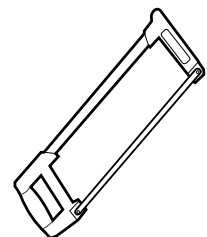
MALLET



RUBAN DOUBLE FACE VHB



5/16" HEX NUT DRIVER

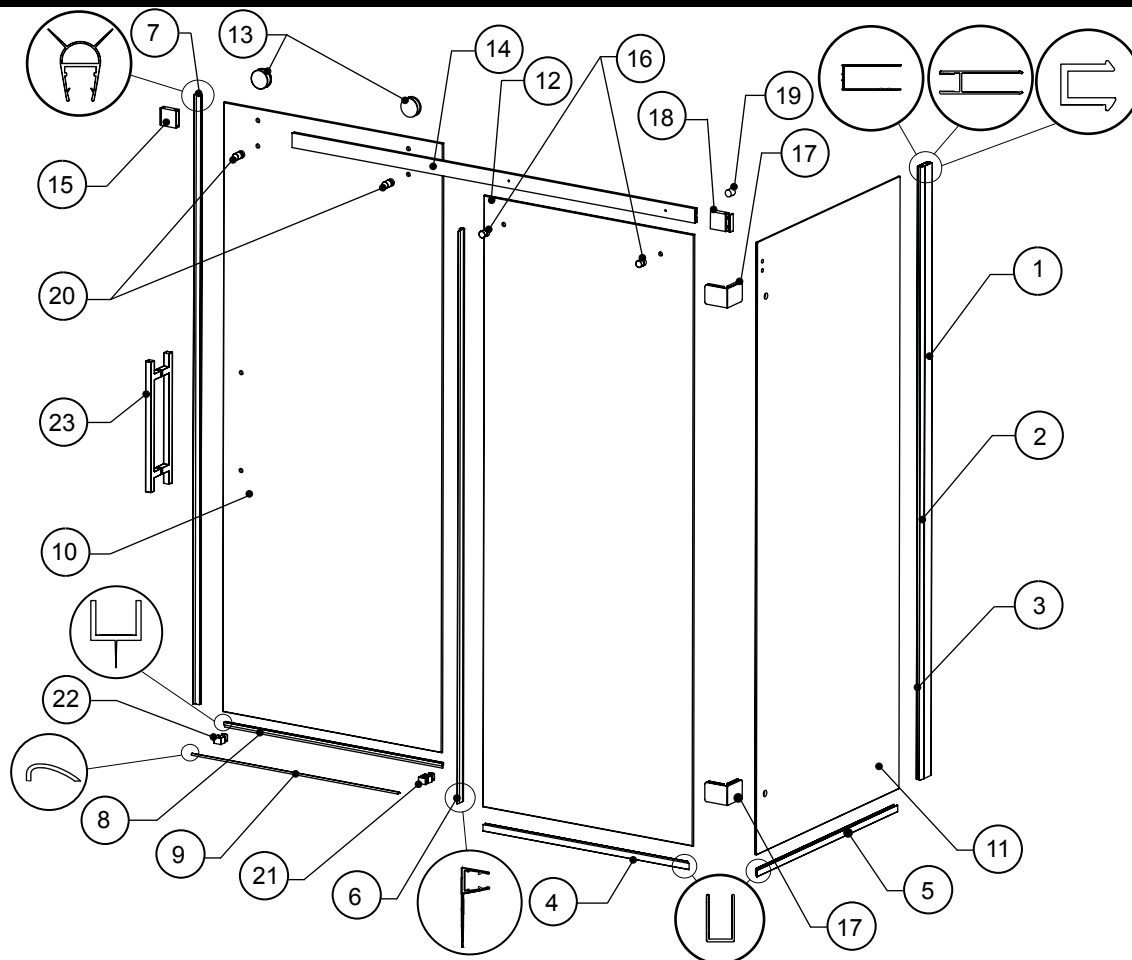


HACKSAW

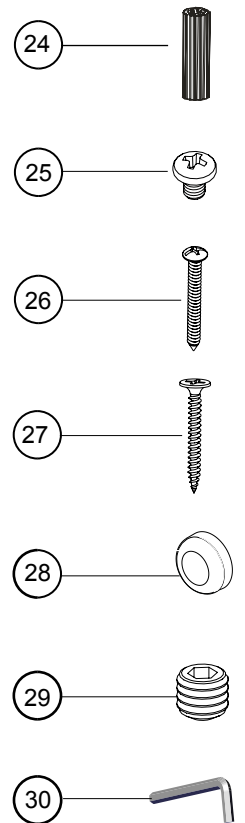


TO INSTALL THE SHOWER DOOR ON CERAMIC TILES, USE A 1/4" DRILL BIT FOR CERAMIC TILES.

PARTS LISTING



HARDWARE



Item	Parts	qty
1	WALL JAMB	1
2	EXPANDER	1
3	EXPANDER GASKET	1
4	FIXED PANEL U CHANNEL	1
5	RETURN PANEL U CHANNEL	1
6	MIDGASKET	1
7	DOOR GASKET	1
8	BOTTOM DOOR GASKET	1
9	ALUMINUM THRESHOLD	1
10	DOOR PANEL	1
11	RETURN PANEL	1
12	FIXED PANEL	1
13	ROLLERS	2
14	RUNNING RAIL	1
15	WALL MOUNT BRACKET	1
16	GLASS FASTENER	2
17	CORNER CLIPS	2
18	GLASS MOUNT BRACKET	1
19	STOPPER	1
20	ANTI-JUMP	2
21	BOTTOM GUIDE	1
22	DOOR RECEIVER	1
23	DOOR HANDLE	1
24	WALL PLUG	8
25	EXPANDER SCREW	6
26	WALL JAMB SCREW	4
27	FLAT HEAD SCREW	2
28	SCREW CAP	6
29	HEX SOCKET SET SCREW	8
30	HEX KEY 3mm	1

1

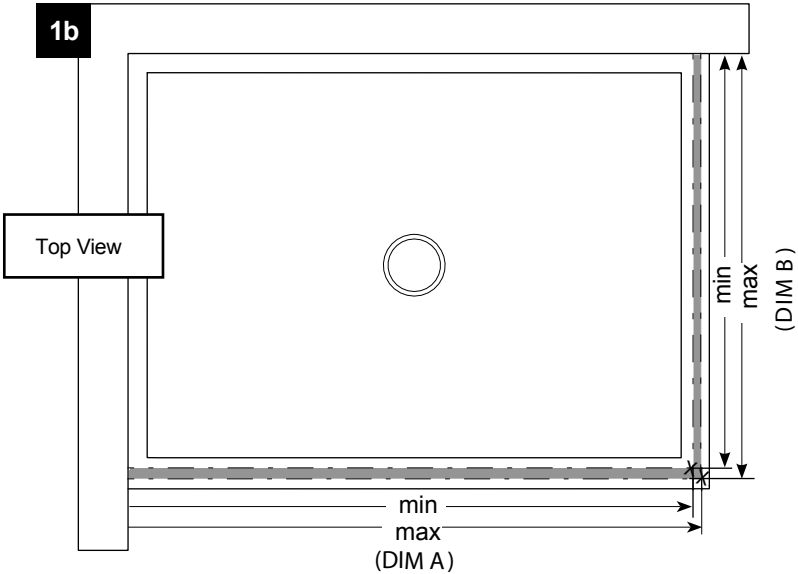
WALL JAMBS INSTALLATION

- 1a
- Using the reference table, identify the A and B dimension that relate to your model.
- 1b
- Measure and mark on the threshold of the base the minimum and maximum dimensions determined previously. The set points locate the recommended position for the panel installation.
- 1c
- Trace a centerline where you would like to install your shower door between the set points and run it up the walls using a level.

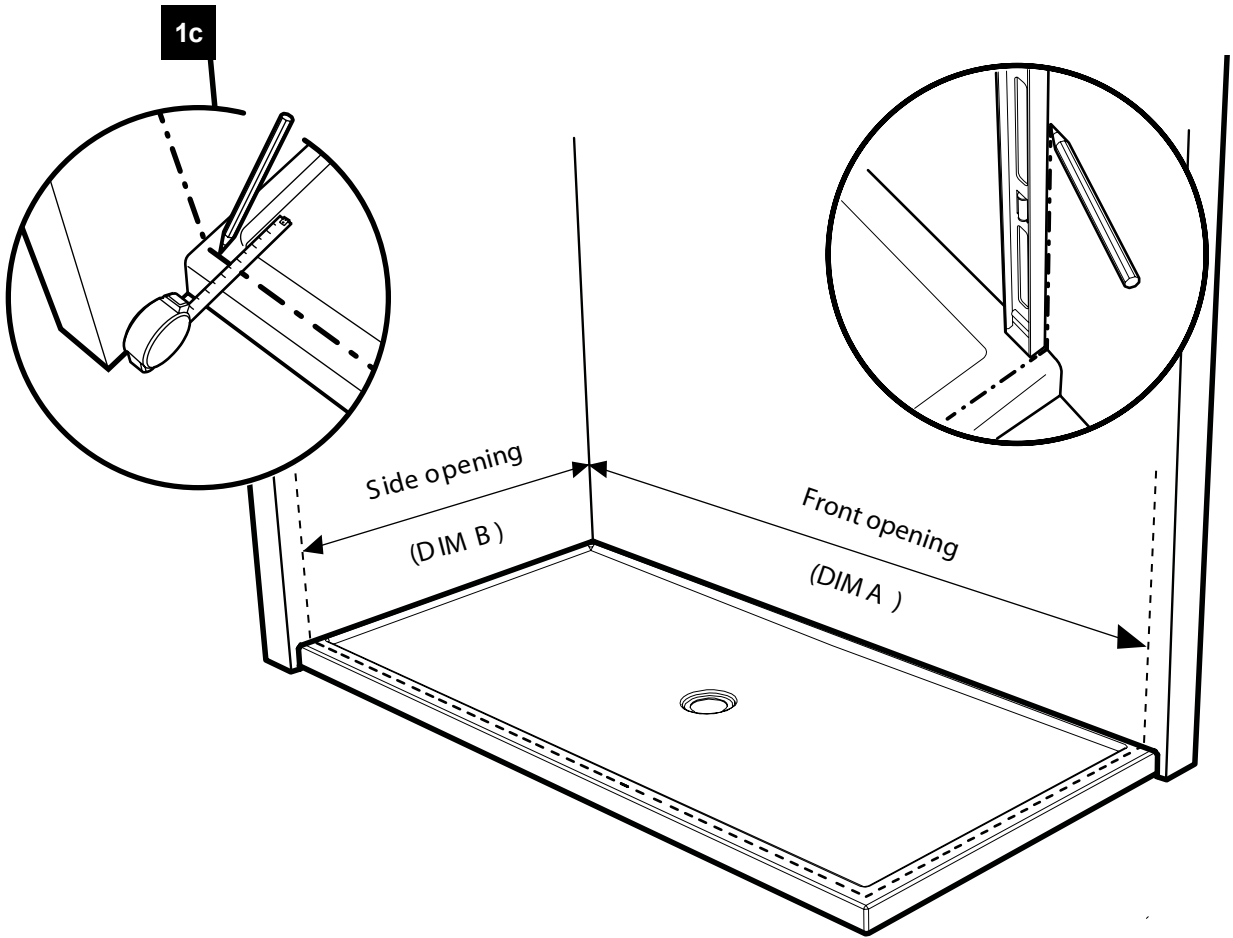
1a

MODEL	DIM A = FRONT OPENING		DIM B = SIDE OPENING	
	MIN	MAX	MIN	MAX
NOV24836-CW	45"	46"	33"	33 5/8"
NOV26036-CW	57"	58"	33"	33 5/8"

1b



1c



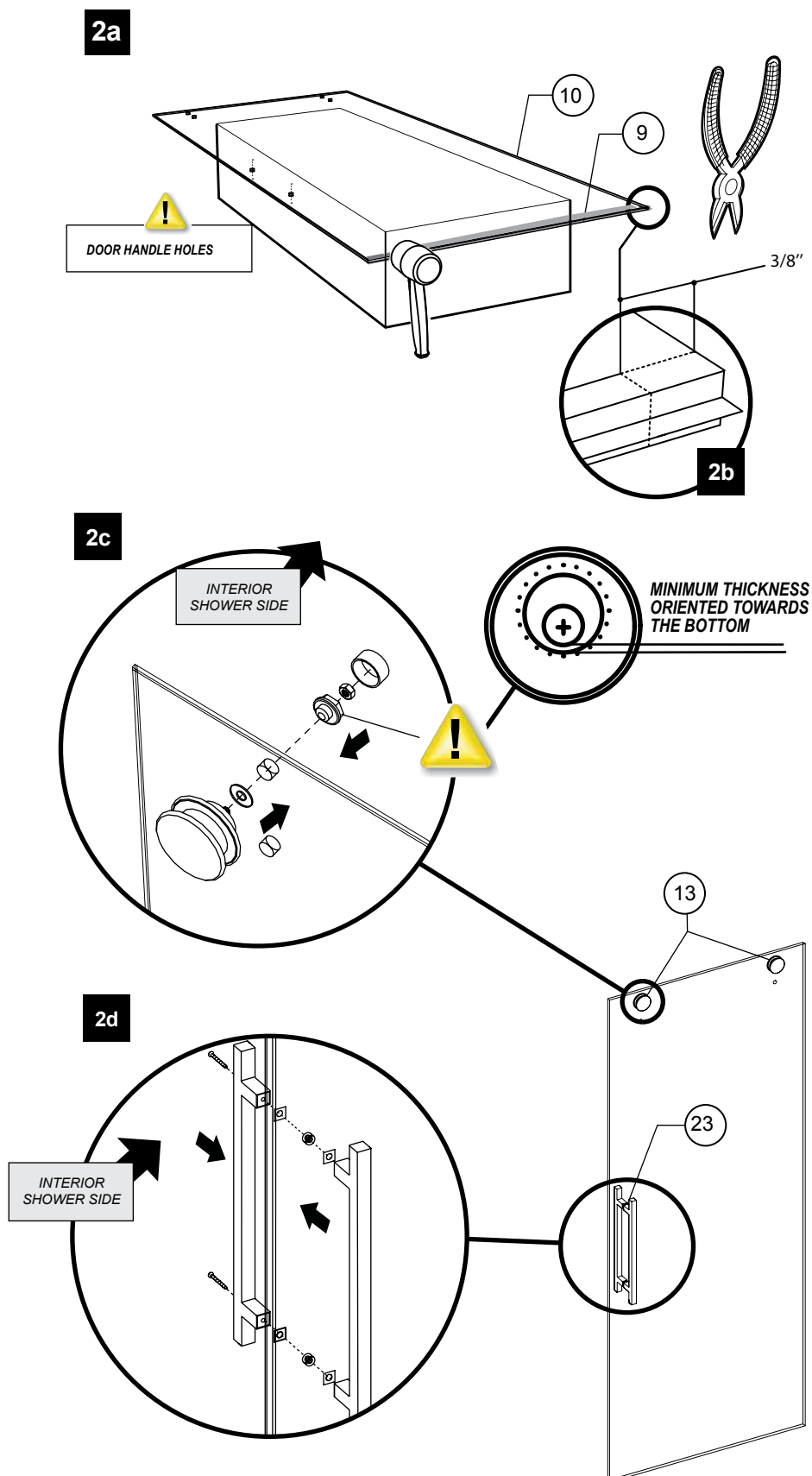
2 DOOR PANEL ASSEMBLY

2a Use a mallet to install bottom gasket (8) on the bottom of the door panel (10). To facilitate installation place door panel on the cardboard packaging box and use as platform. Notice the holes are situated at the top of the panel.

2b Measure and cut $\frac{3}{8}$ " off the edge of the gasket. Cut the gasket on the opposing side of door handle holes.

2c Install both rollers (13) through the top holes of the door panel. Be sure that the adjustment wheel is turned to position the minimum thickness of wheel towards the bottom.

2d Install door handle (23). Holes for screws are located on the back handle and must be located in the interior of the shower door.



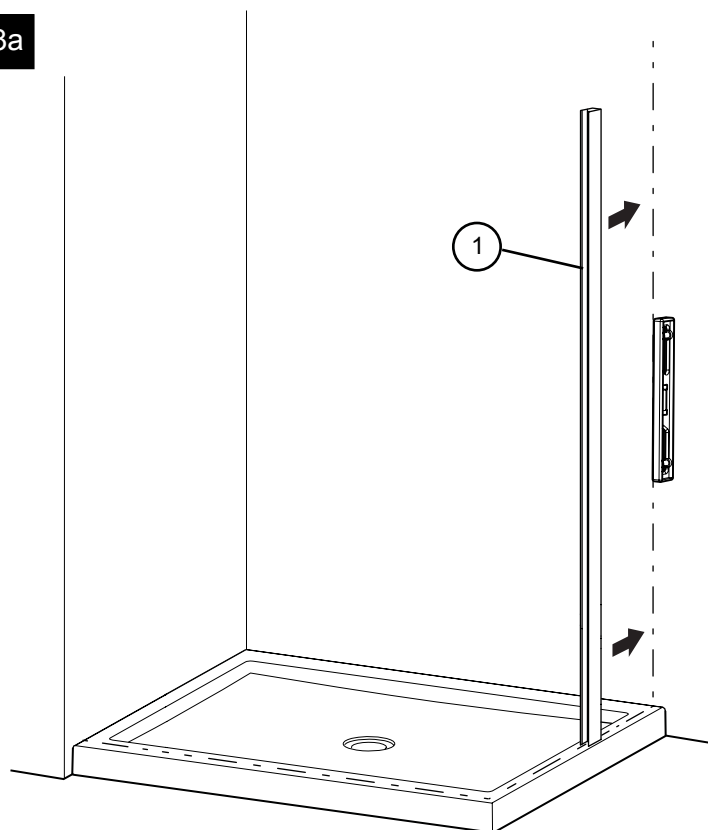
3 WALL JAMB INSTALLATION

3a Place the wall jamb centered on the centerline marked previously on the threshold in the recommended area for the shower door installation and align them by using a level.

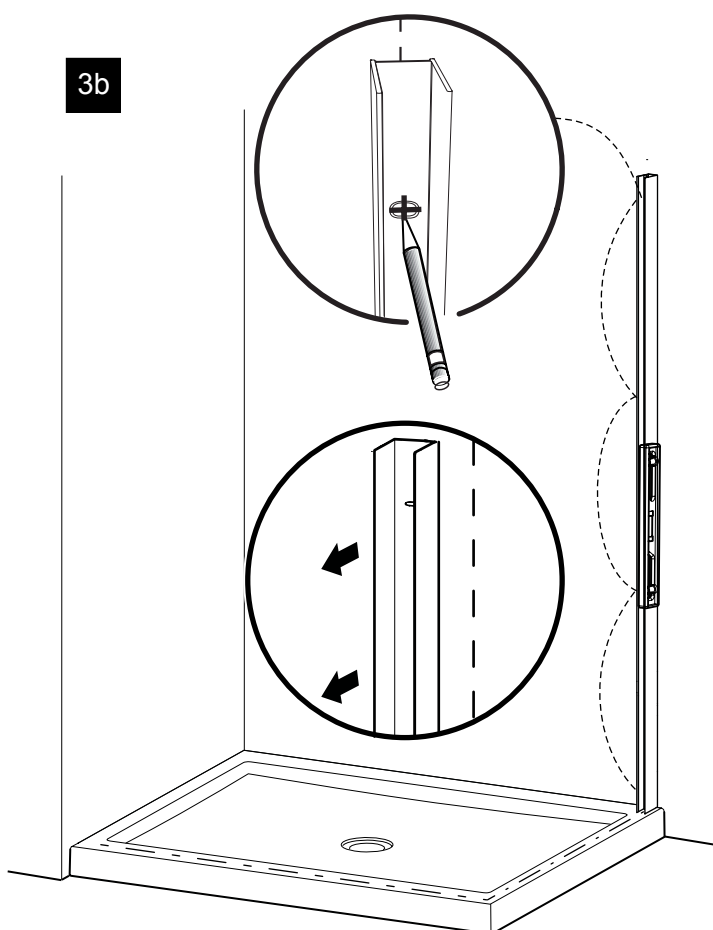
3b Mark the four holes on to the wall. Remove the wall jamb.

3c Drill the holes in the wall with $\varnothing 1/4"$ drill bit intended for ceramic tiling.

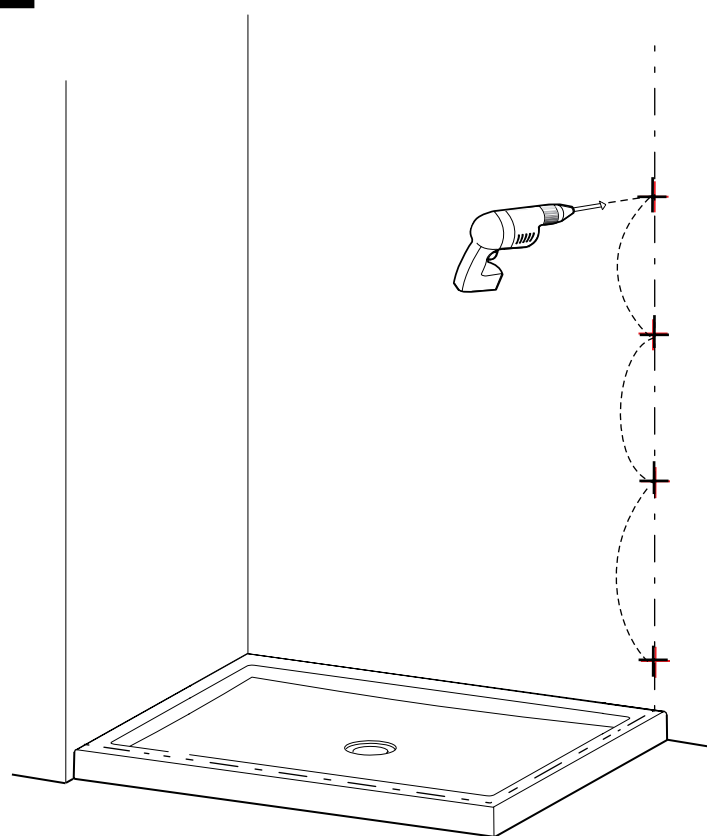
3a



3b



3c



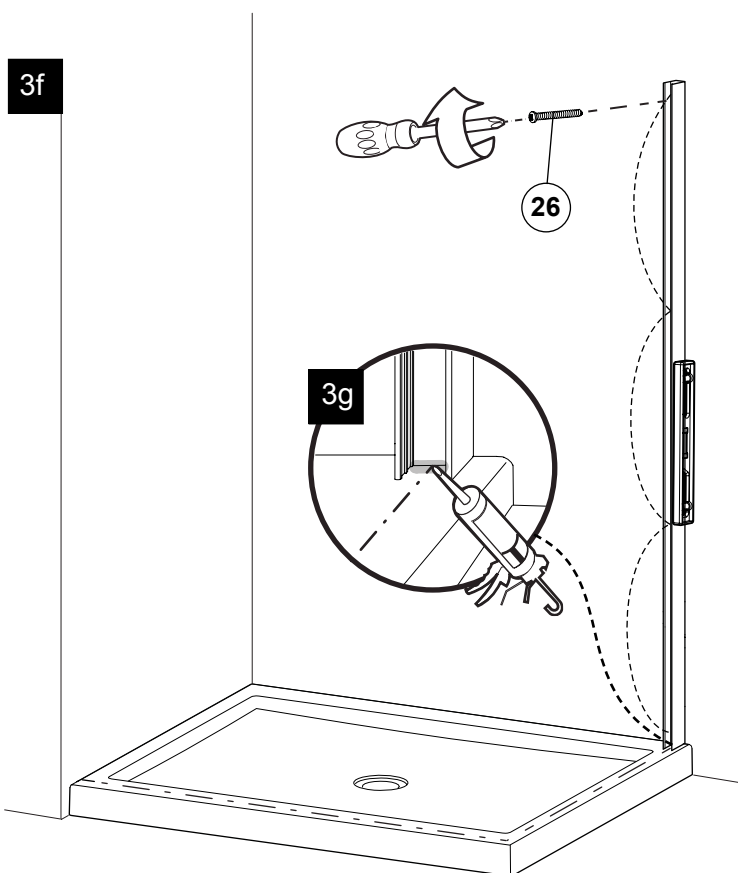
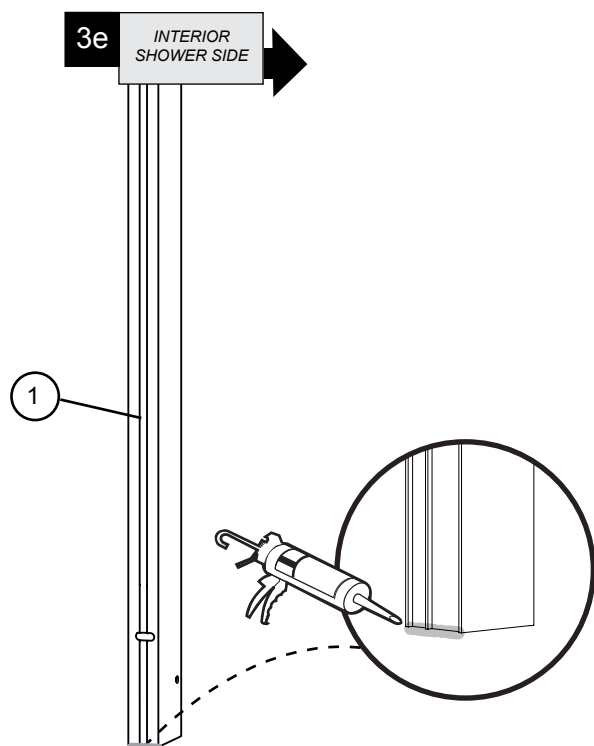
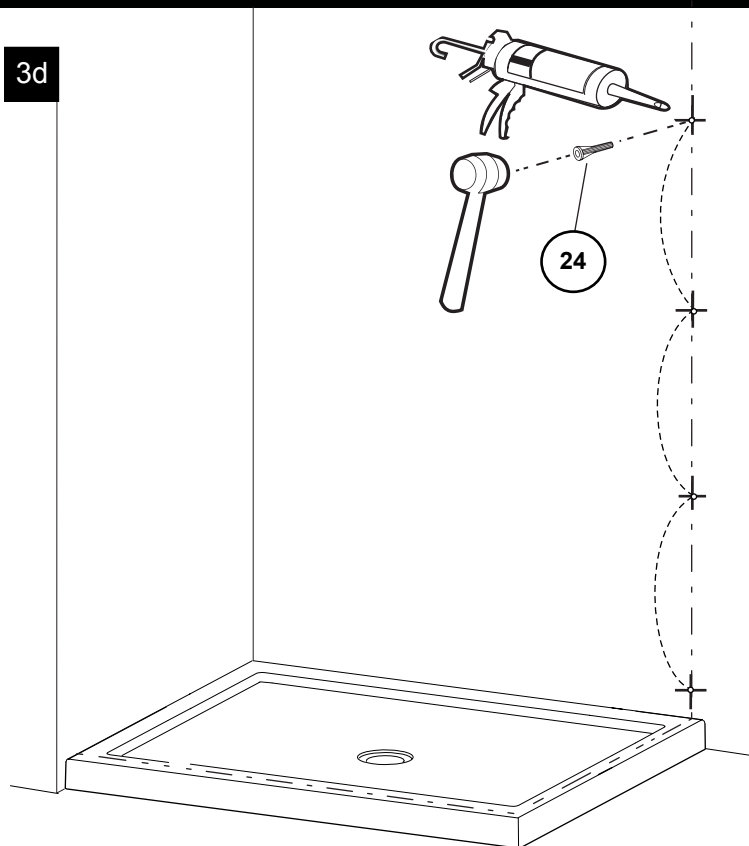
3 WALL JAMB INSTALLATION (CONTINUED)

3d Insert one drop of silicone in each hole in the wall before inserting the wall plug (x8).

3e Apply silicone at the bottom of the wall jamb on the side that goes against the wall as illustrated.(x2)

3f Reposition the wall jamb on the line marked previously. Ensure verticality with the level. Screw the wall jamb on to the wall using the screws 1 3/8" (x8).

3g Apply silicone on the inside of the wall jamb as illustrated.

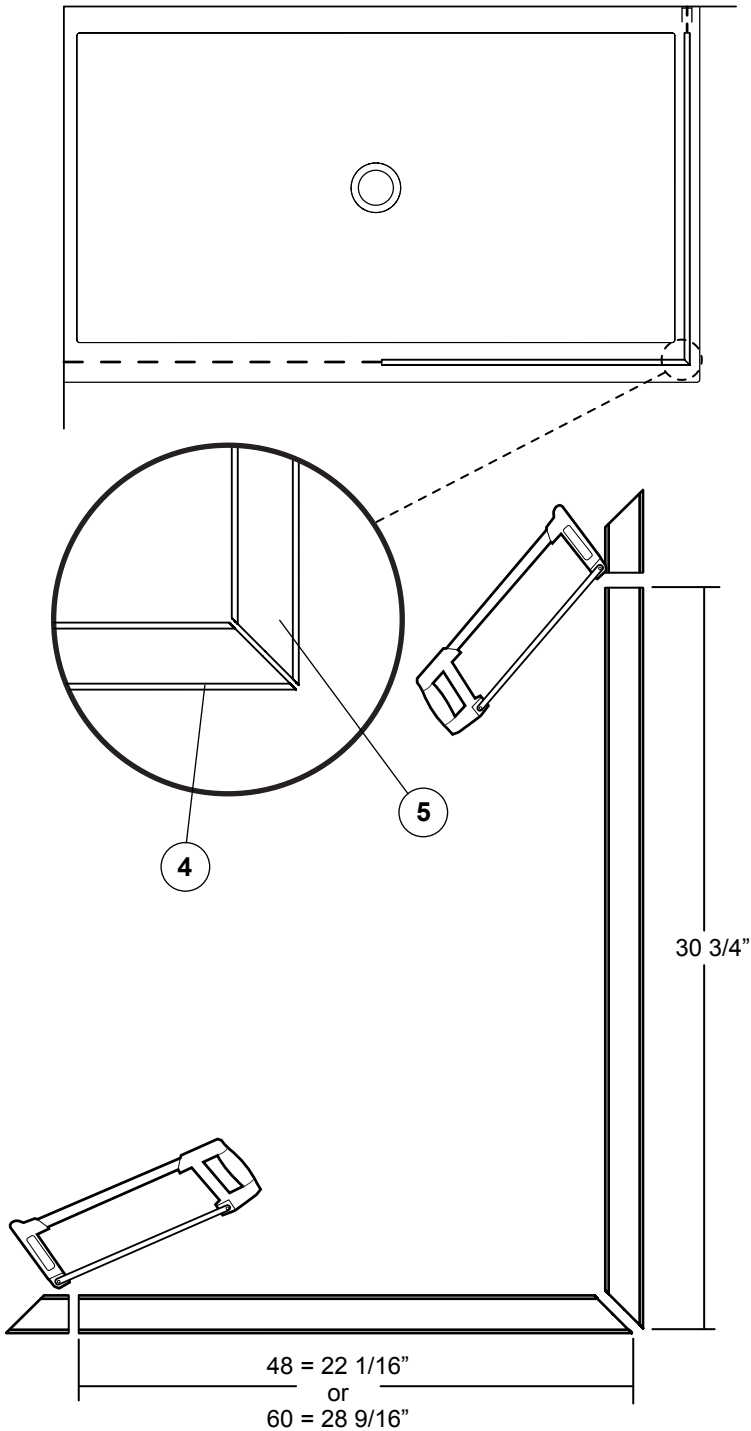


4 CUT THE “U” CHANNEL

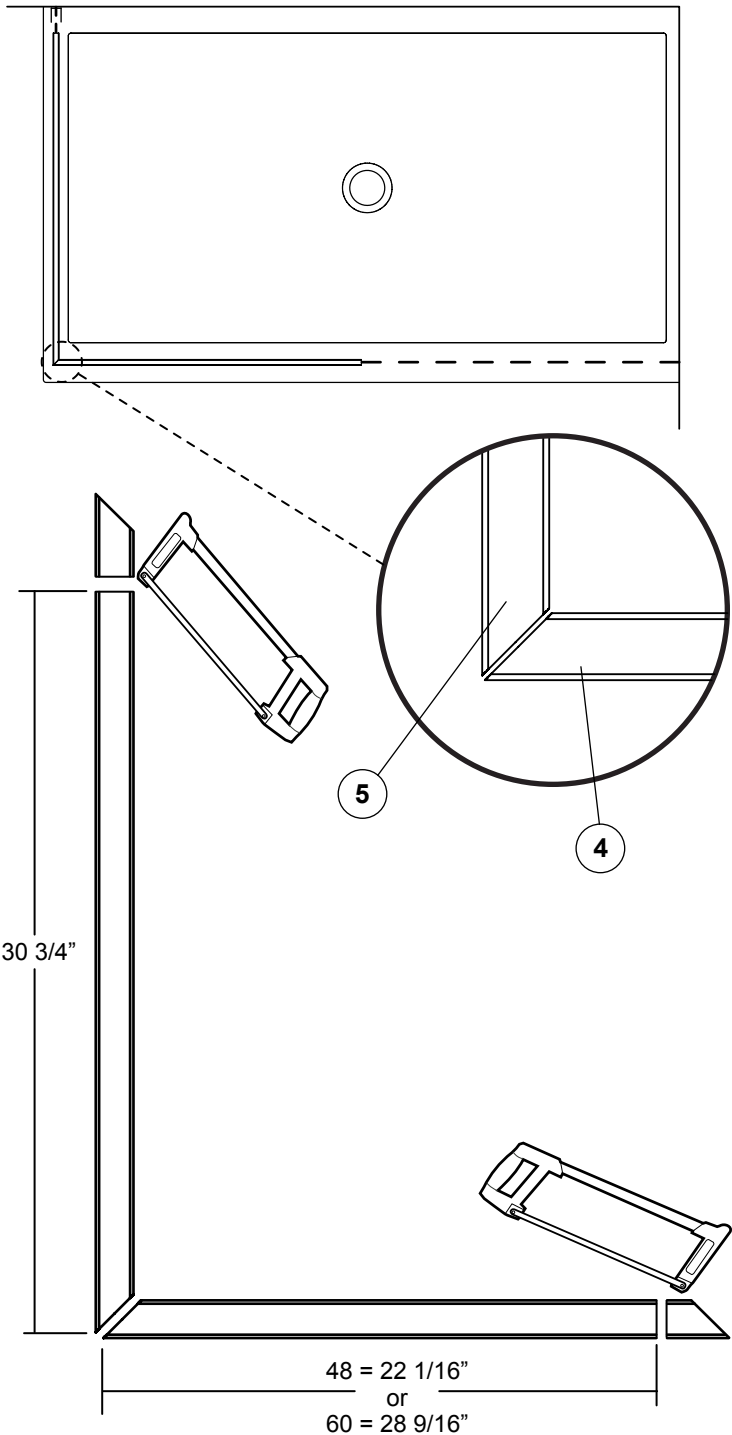
4a The “U” channel needs to be cut according to the dimensions in the table. Make sure the correct angles is kept.

Model	Fix Panel	Return Panel
48	22 1/16"	30 3/4"
60	28 9/16"	


LEFT SIDE INSTALLATION

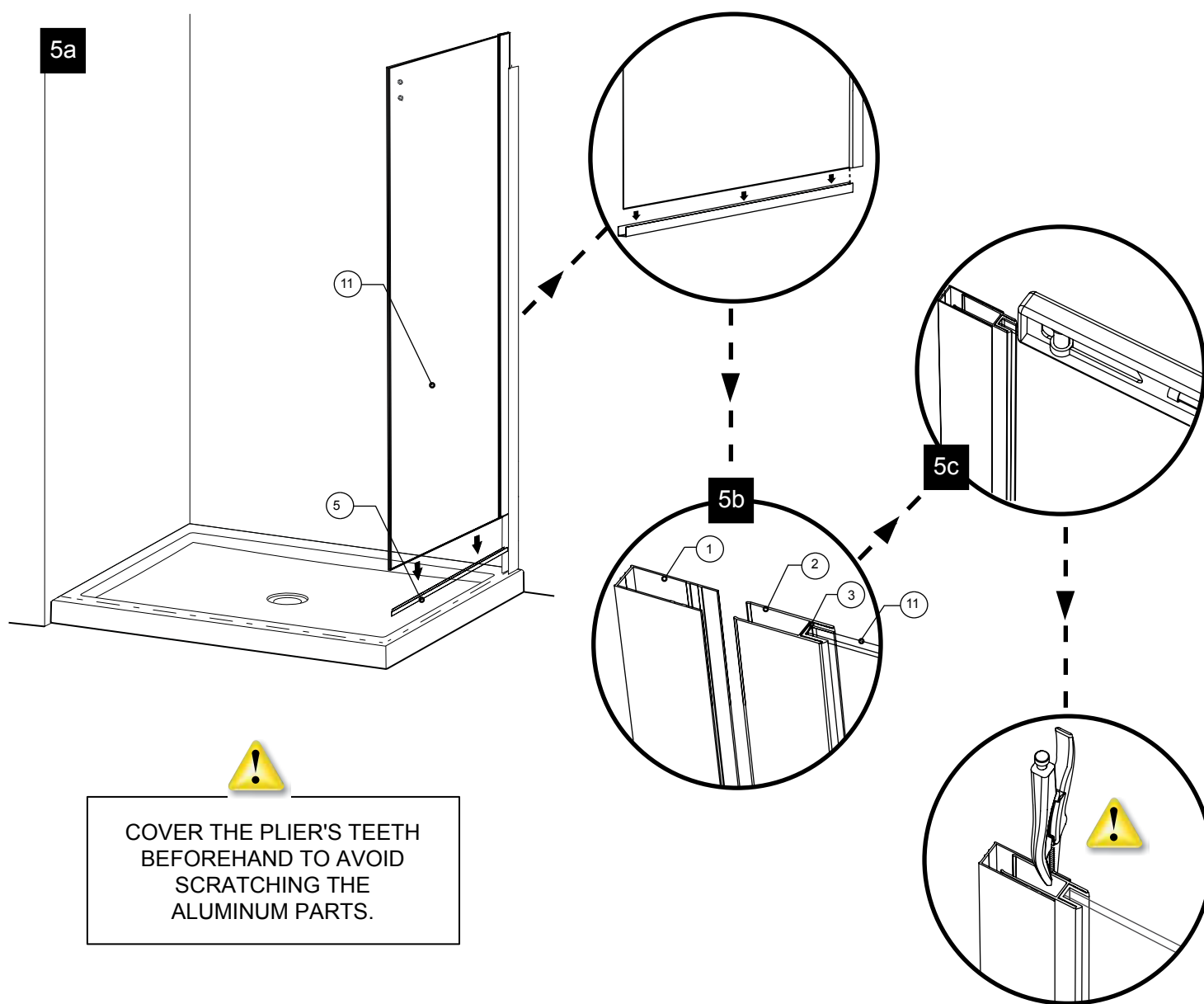


RIGHT SIDE INSTALLATION



5 LOCATION OF THE U CHANNEL

- 5a** Place U-Channels temporarily on the bottom of return panel (11).
- 5b** Slide the return panel pre-assembled with expander (2) and gasket (3) into the wall jamb (1).
- 5c** Level the glass panel assembly with the wall jamb. Lock into position by clamping the wall jamb and expander with a plier. 

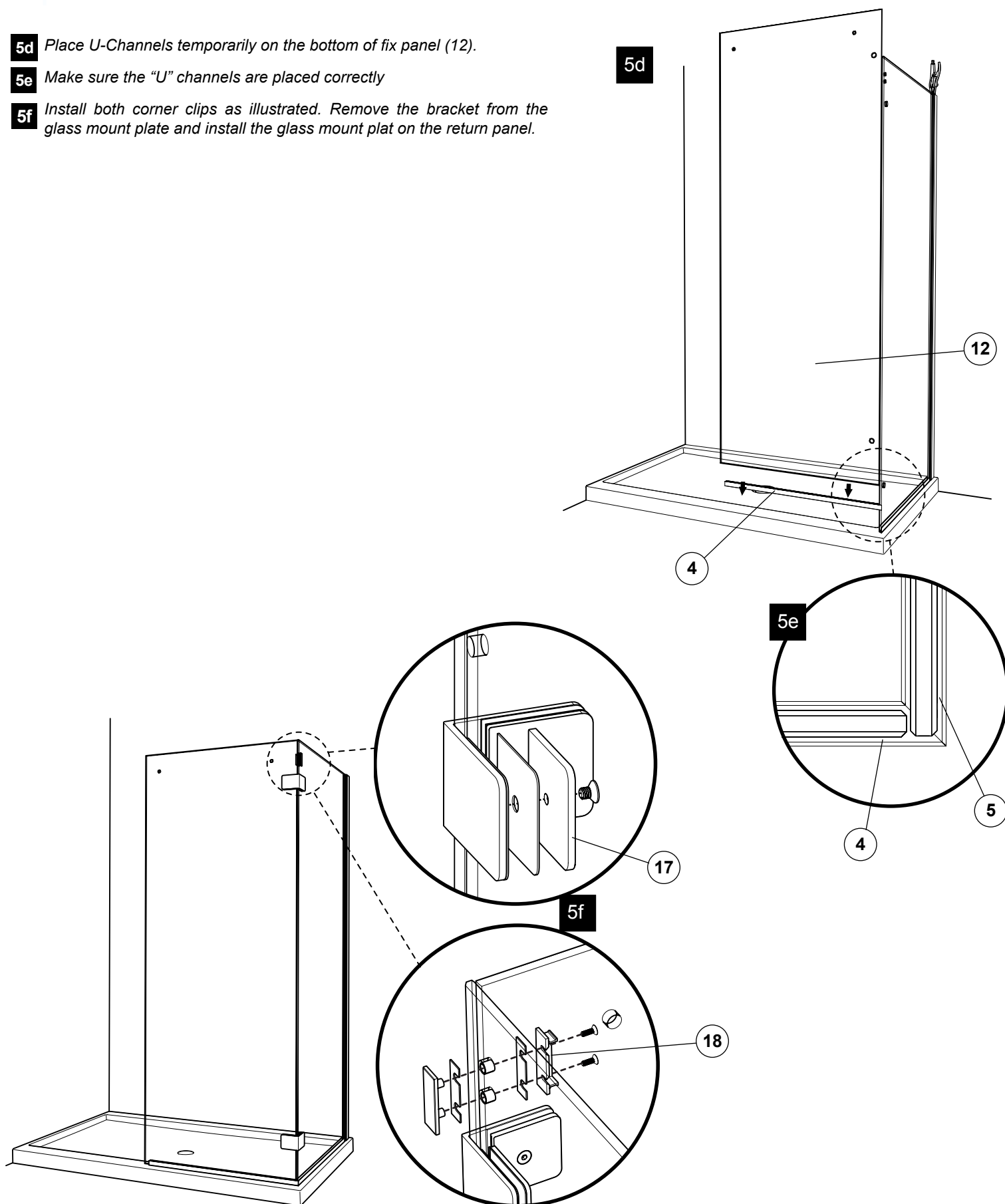


5 LOCATATION OF THE U CHANNEL (CONTINUED)


5d Place U-Channels temporarily on the bottom of fix panel (12).

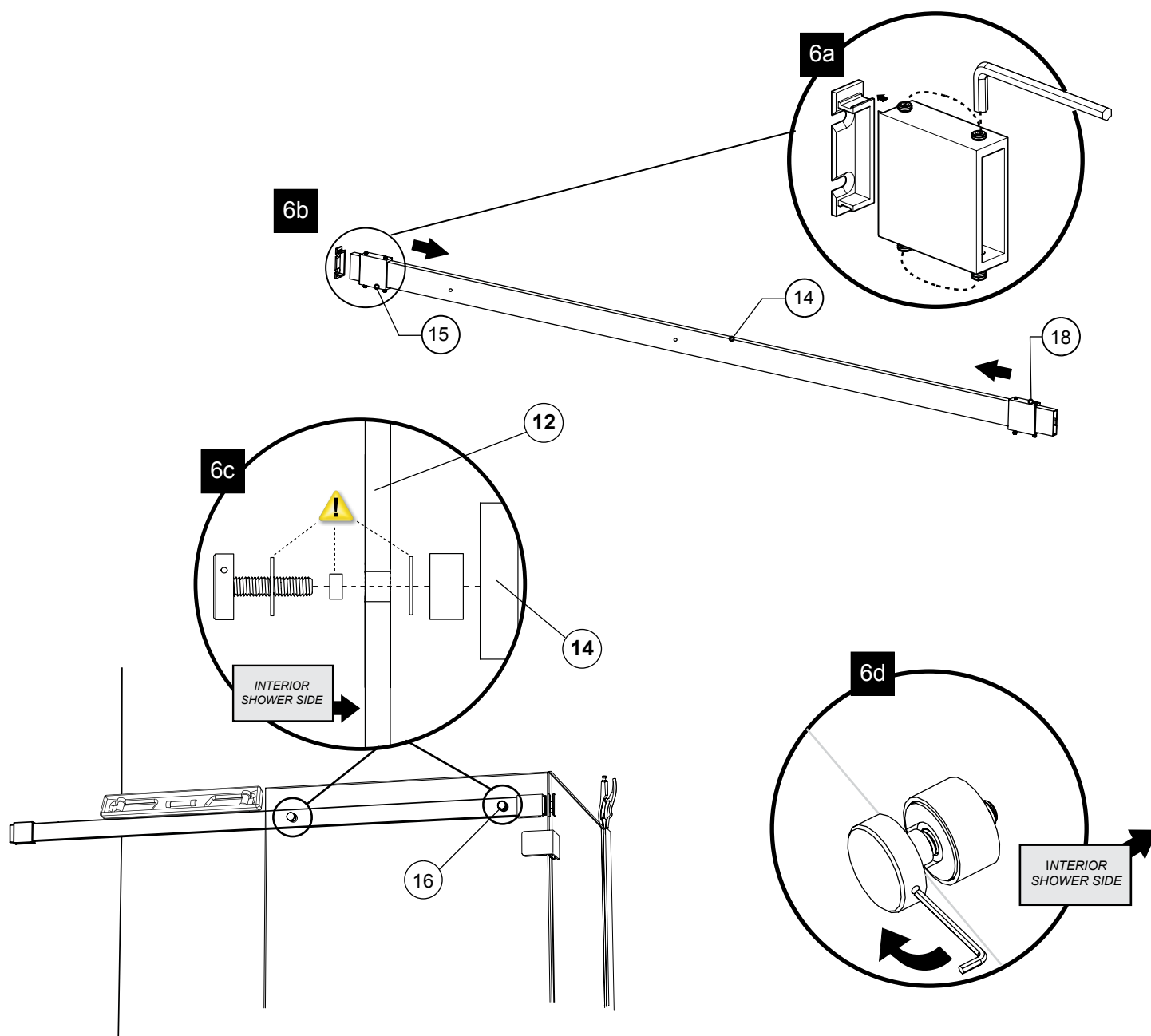
5e Make sure the "U" channels are placed correctly

5f Install both corner clips as illustrated. Remove the bracket from the glass mount plate and install the glass mount plat on the return panel.



6 RUNNING RAIL INSTALALTION

- 6a** Unfasten set screws (x4) from wall bracket (15). Then remove back plate from the wall bracket and set aside.
- 6b** With back plates of the wall and glass brackets removed, slide the wall brackets away from the ends of the running rail (14)
- 6c** Align running rail holes with holes in fix panel. Install glass fasteners (16) to join fix panel (12) and rail (14). Be sure to place gaskets between all contact with glass and metal parts.
- 6d** Fasten with hex 3mm key. 



6 RUNNING RAIL INSTALLATION

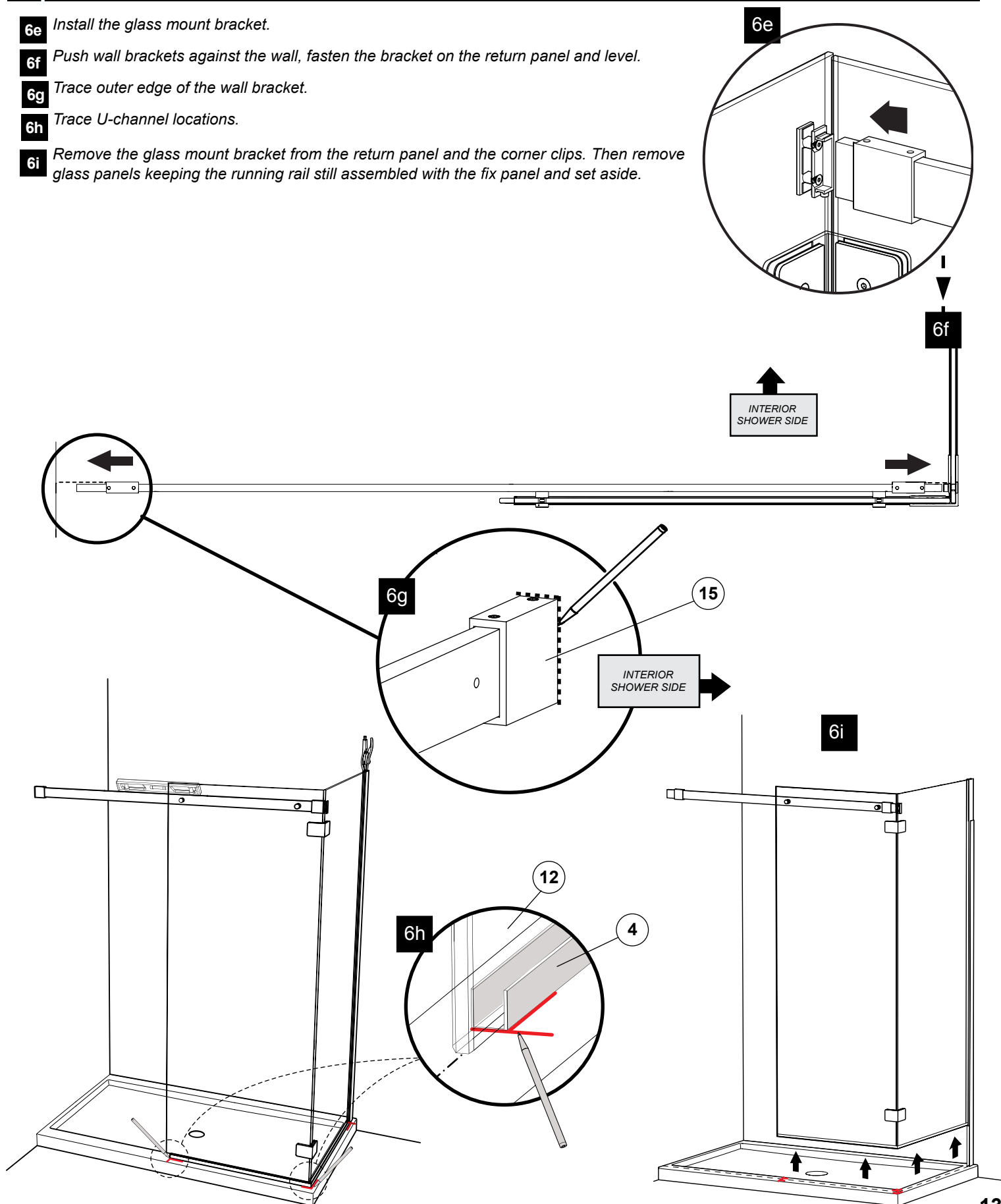
6e Install the glass mount bracket.

6f Push wall brackets against the wall, fasten the bracket on the return panel and level.

6g Trace outer edge of the wall bracket.

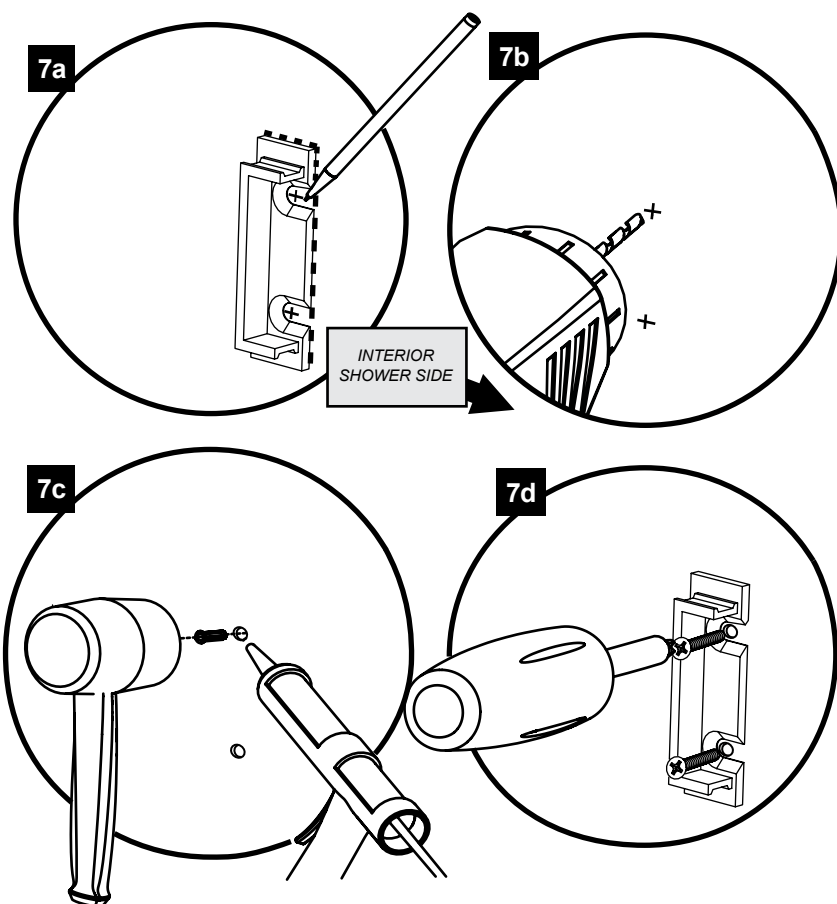
6h Trace U-channel locations.

6i Remove the glass mount bracket from the return panel and the corner clips. Then remove glass panels keeping the running rail still assembled with the fix panel and set aside.





7 WALL BRACKET BACK PLATE

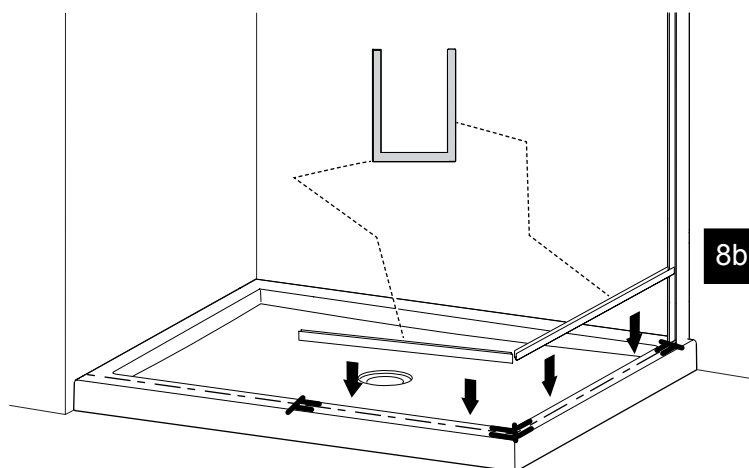
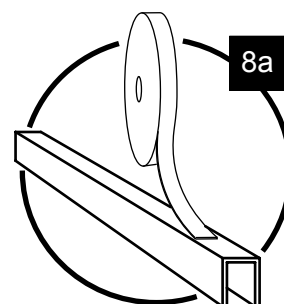
- 7a** Align back plate of wall bracket to previously traced mark on wall. Trace hole centers to determine drilling location. (x2)
- 7b** Drill marked holes in walls by using the 1/4" drill bit.
- 7c** Insert one drop of silicone in each hole bored in the wall before inserting the wall plugs.
- 7d** Screw in flat head screws through holes to secure back plate of bracket to wall (x2)



8 U-CHANNEL

- 8a** Apply double sided VHB tape to bottom of both U-channels. 
- 8b** Align U-channel with previously marked line.  and press them down to secure to the base.

CLEAN BOTTOM OF U-CHANNEL AND BASE BEFORE APPLYING DOUBLE SIDED VHB TAPE TO UNDERSIDE OF U-CHANNEL.



9 BOTTOM GUIDE

9a Place door panel (10) inside shower to simplify following installation procedures. place the panel on a cushioned surface, such as a towel or cardboard, to prevent damage either to the panel or the base.

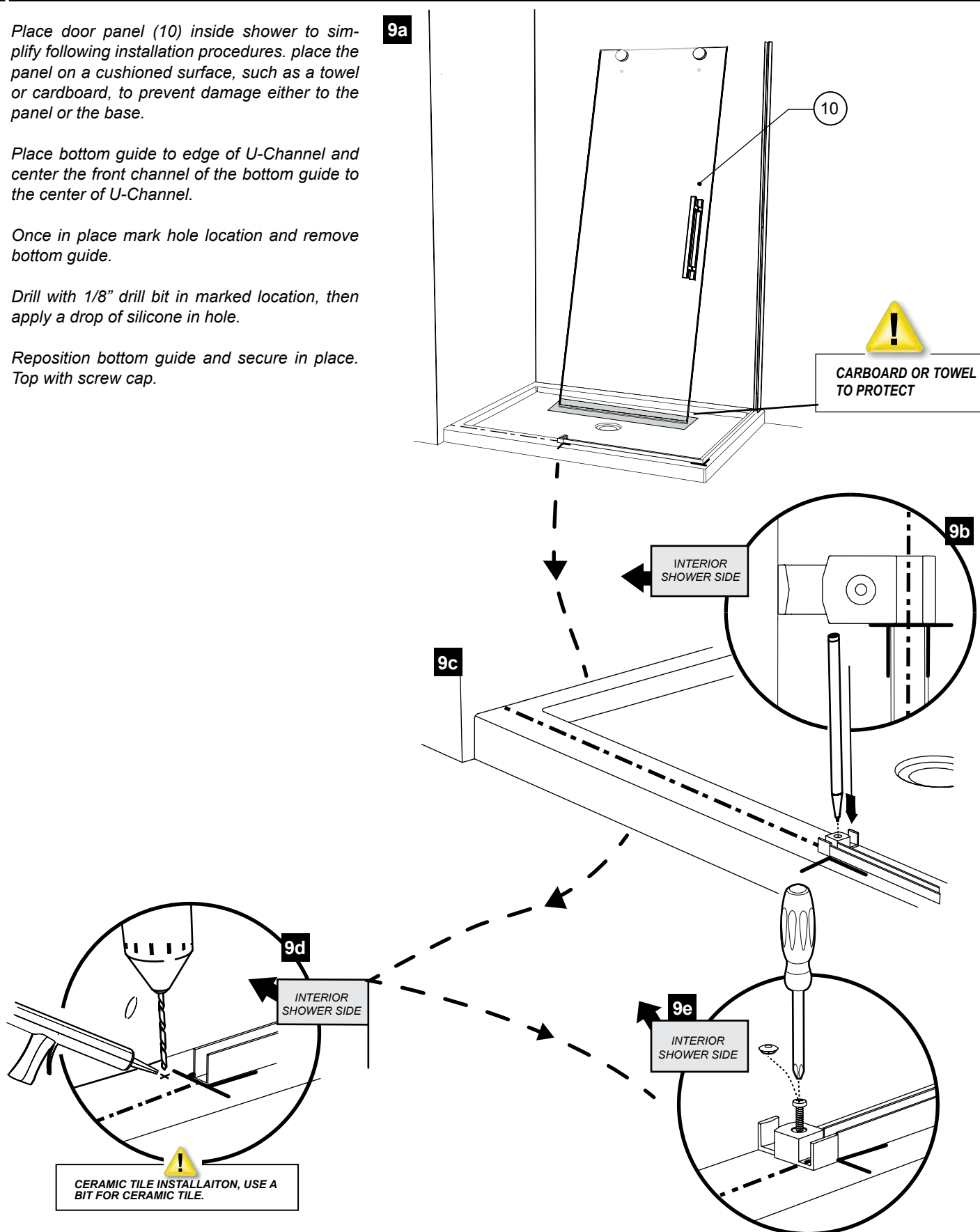
9a

9b Place bottom guide to edge of U-Channel and center the front channel of the bottom guide to the center of U-Channel.

9c Once in place mark hole location and remove bottom guide.


9d Drill with 1/8" drill bit in marked location, then apply a drop of silicone in hole.

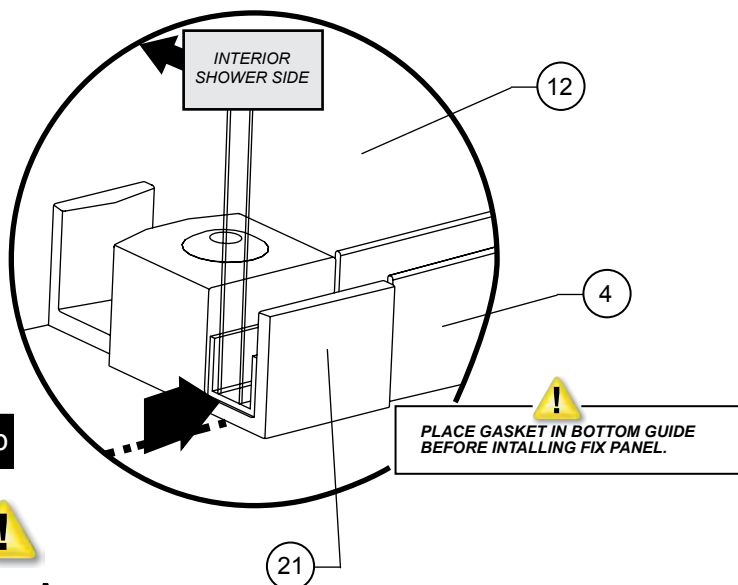
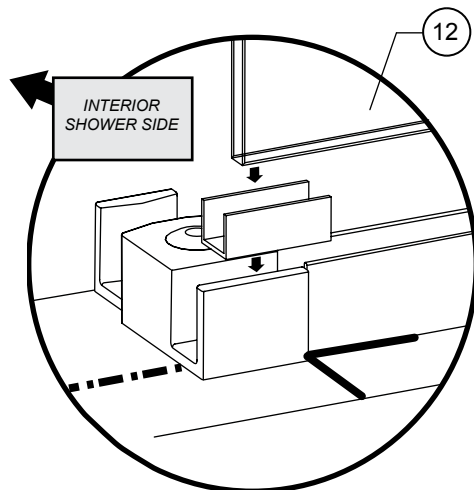
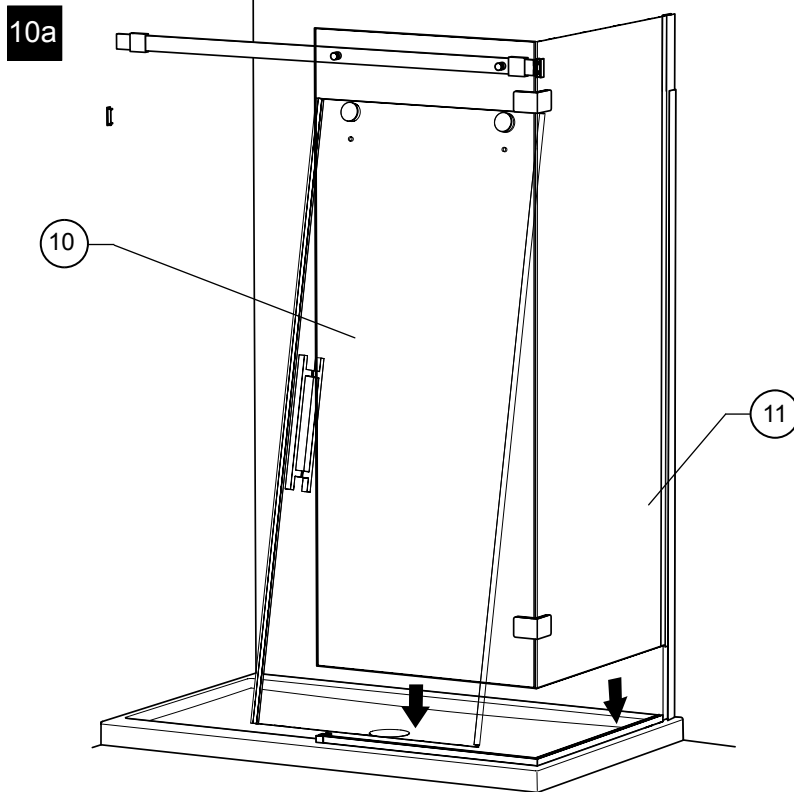
9e Reposition bottom guide and secure in place. Top with screw cap.



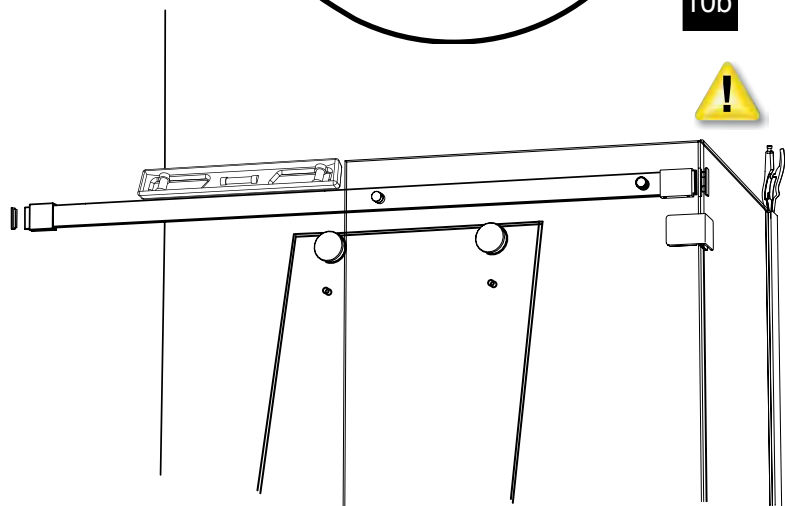
10 PANEL INSTALLATION

10a Reinstall fix panel as well as the return panel, corner clips and glass mount plate. Be sure to level panels and align fix panel edge with end of bottom guide.

10b Lock into position by clamping the wall jambs and expanders with pliers. 



10b

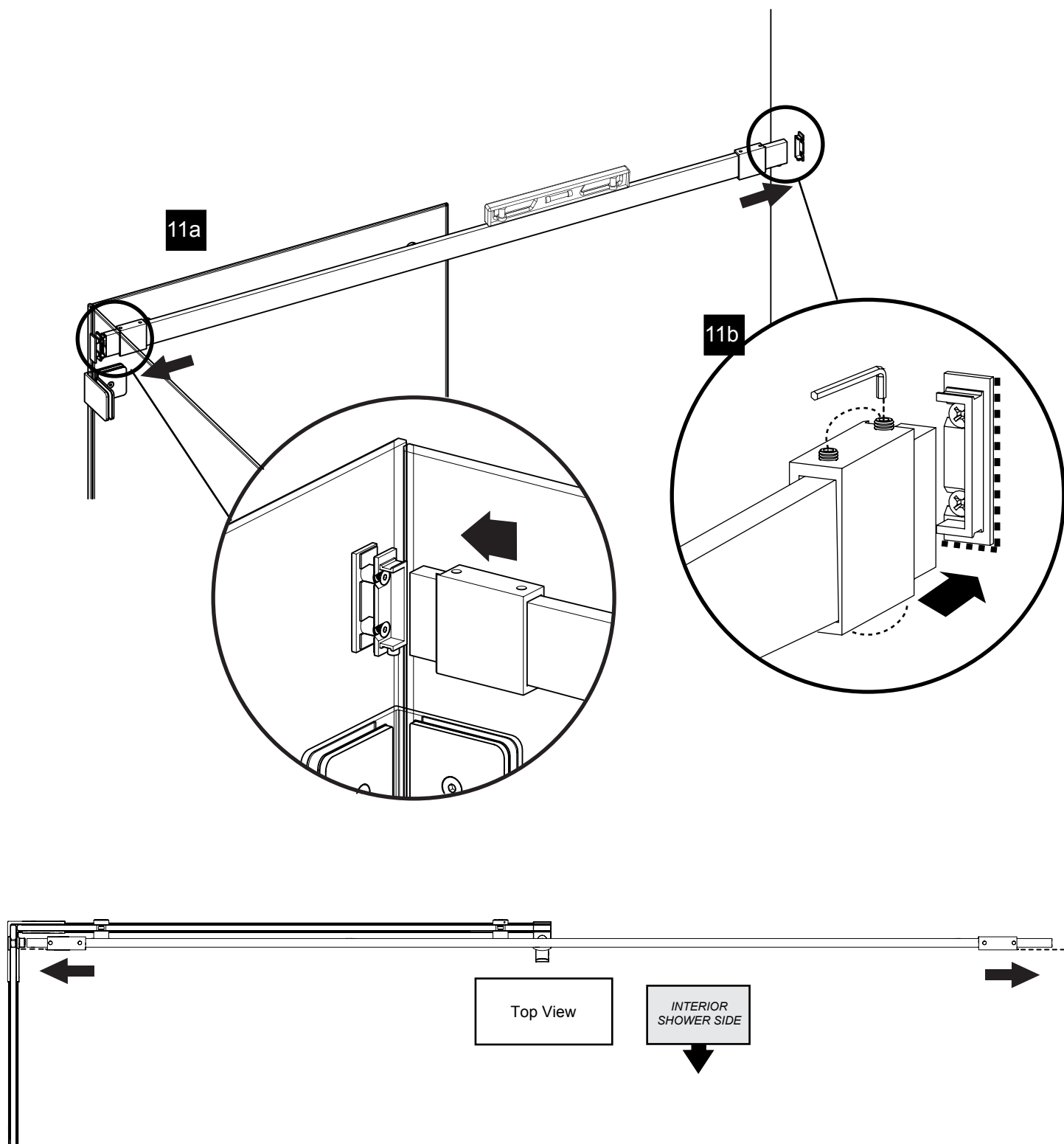


 COVER THE PLIER'S TEETH BEFOREHAND TO AVOID SCRATCHING THE ALUMINUM PARTS.

11 SECURE THE RUNNING

11a Push wall brackets towards wall and lock in with back plate previously secured to wall. Repeat on opposite side with glass bracket.

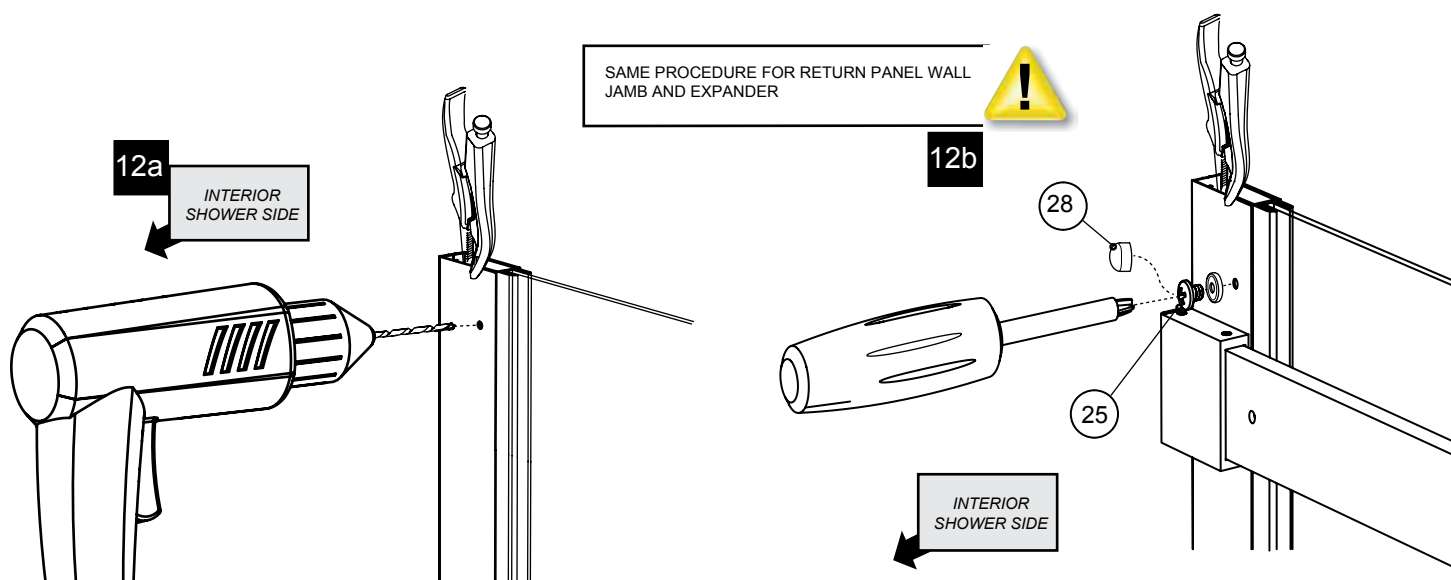
11b Tighten set screws to secure in place with provided allen key. (X8)



12 WALL JAMB AND EXPANDER

12a Drill through wall jamb holes with 1/8" drill bit, to pierce through the expander. (x3)

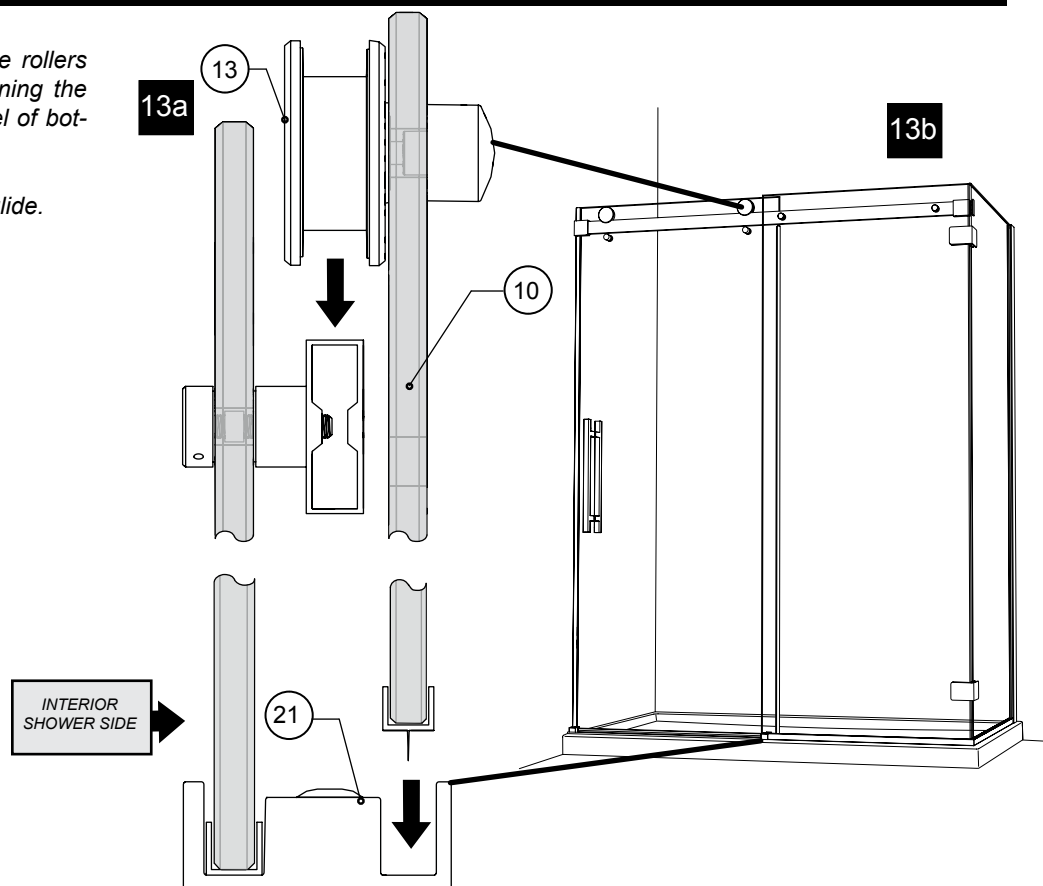
12b Screw 3/4" screws (25) through holes to hold expander and wall jamb together in place (x3). Cover all screws with screw caps (28).



13 DOOR PANEL INSTALLATION

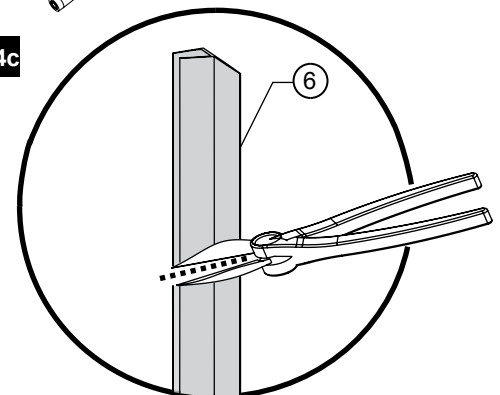
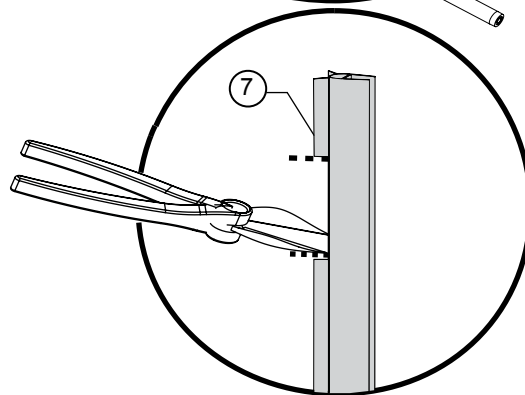
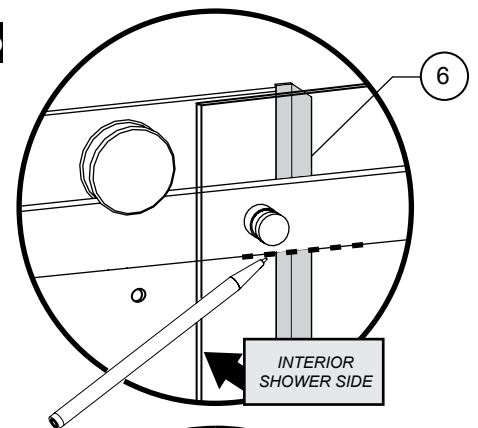
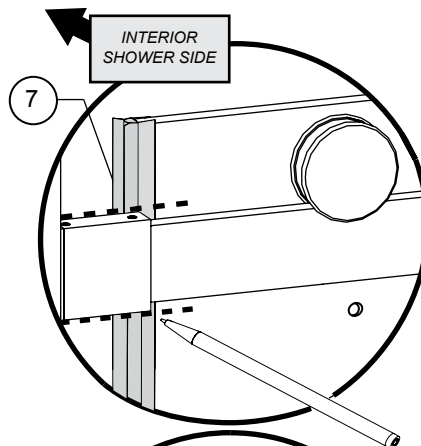
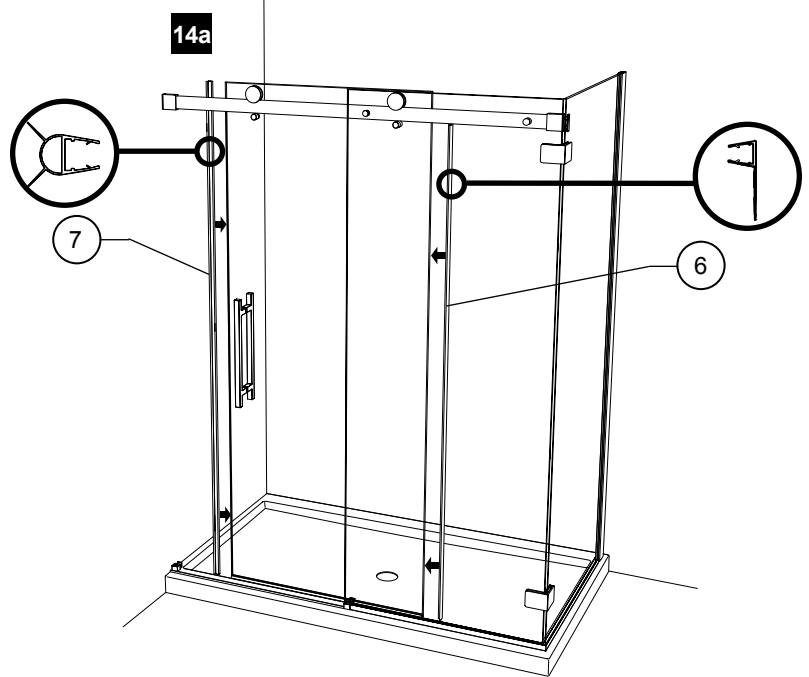
13a Install door panel (10) by aligning the rollers (13) on running rail (14) and by aligning the door panel (10) with the back channel of bottom guide (21).

13b Slide door to insure a smooth stable glide.

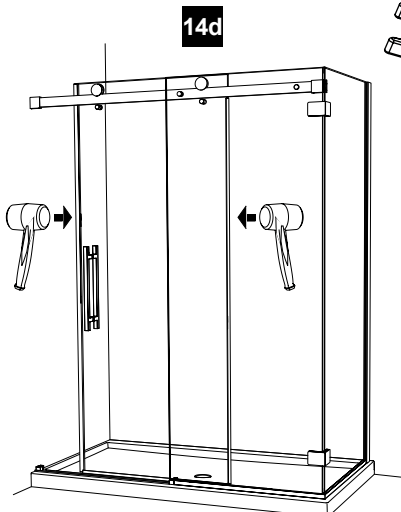


14 DOOR GASKETS

- 14a** Temporarily install midgasket (6) and the door gasket (7) to door panel.
- 14b** Close door entirely, mark interference of gaskets with running rail.
- 14c** Cut gasket at marked locations with cutters. Note that midgasket (6) needs only to be cut below running rail. The top part is no longer required for assembly.
- 14d** Reinstall gaskets from bottom working your way up. Use a mallet to insure that the gaskets are fully pushed onto glass panel door.



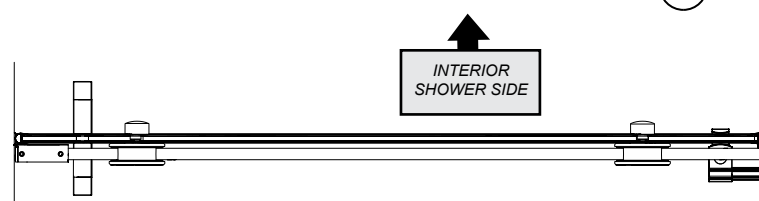
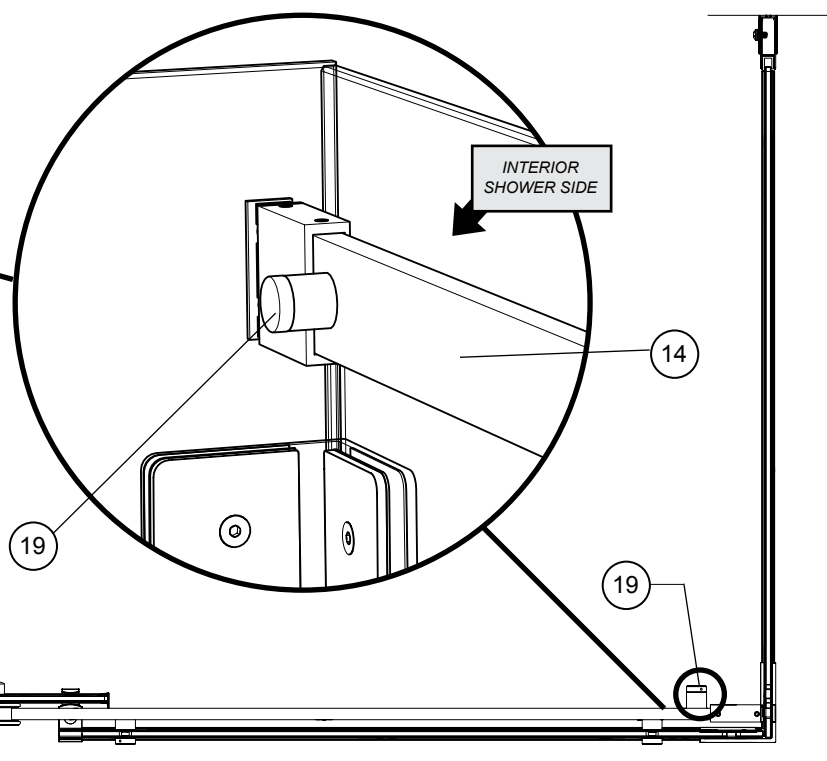
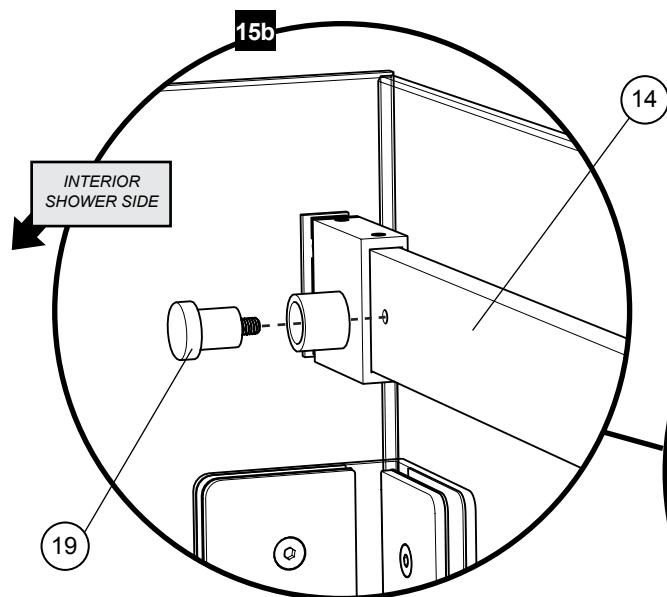
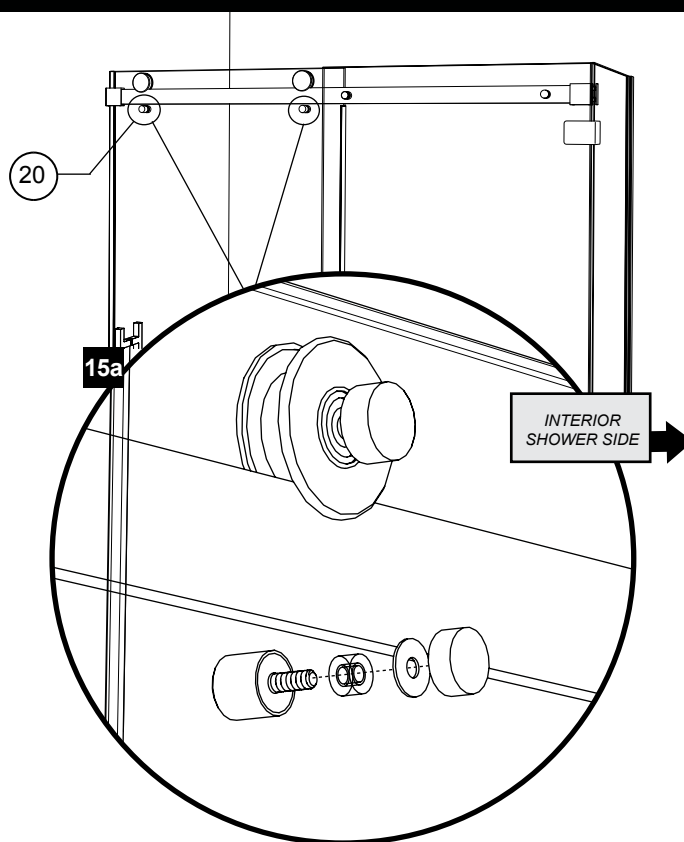
**REMOVE GASKET FROM
PANEL BEFORE CUTTING.**



15 ANTI-JUMP & DOOR STOPPER

15a Install Anti-Jump (20) in lower holes of door panel located below the running rail. Be sure to place the gaskets between the contact of glass and aluminium parts. (x2)

15b Install door stopper (19) located in the interior shower next to wall jamb. Use hole provided in running rail.



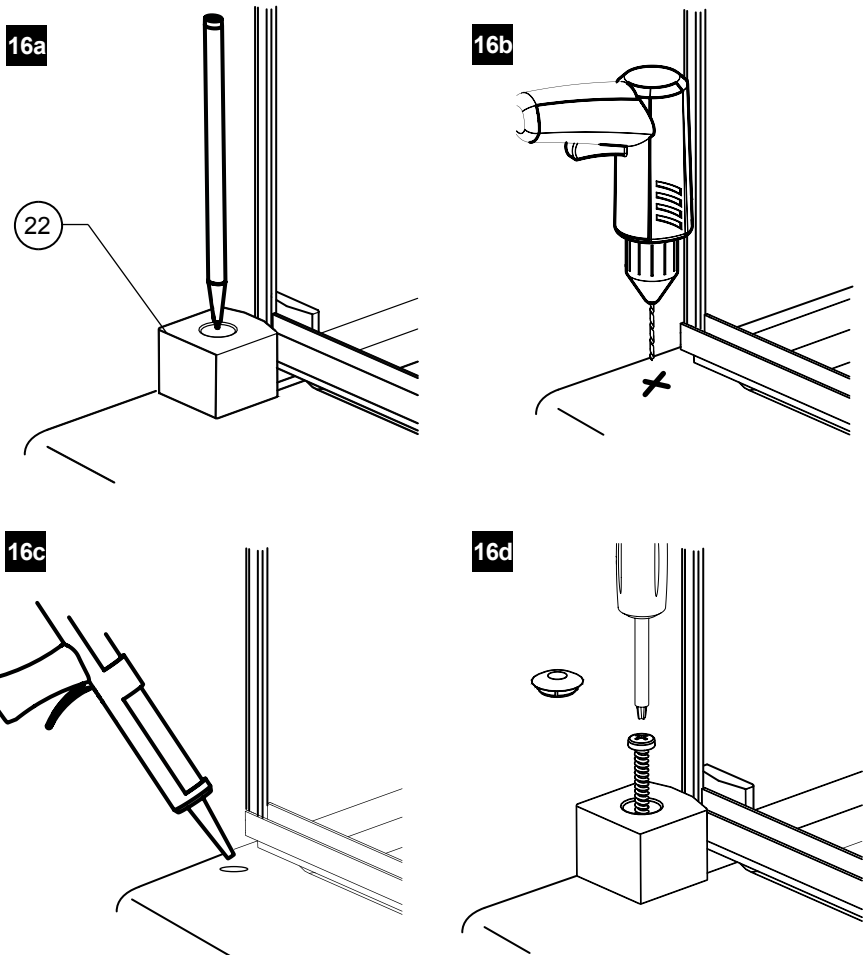
16 DOOR RECEIVER INSTALLATION

16a Place door receiver (22) against wall, place so that the door panel slides smoothly into receiver. Mark hole location.

16b Remove door receiver and drill in marked location with 1/8" drill bit.

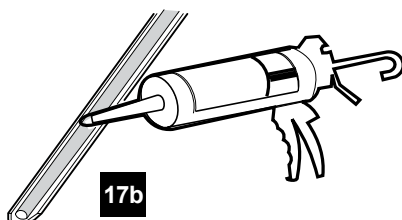
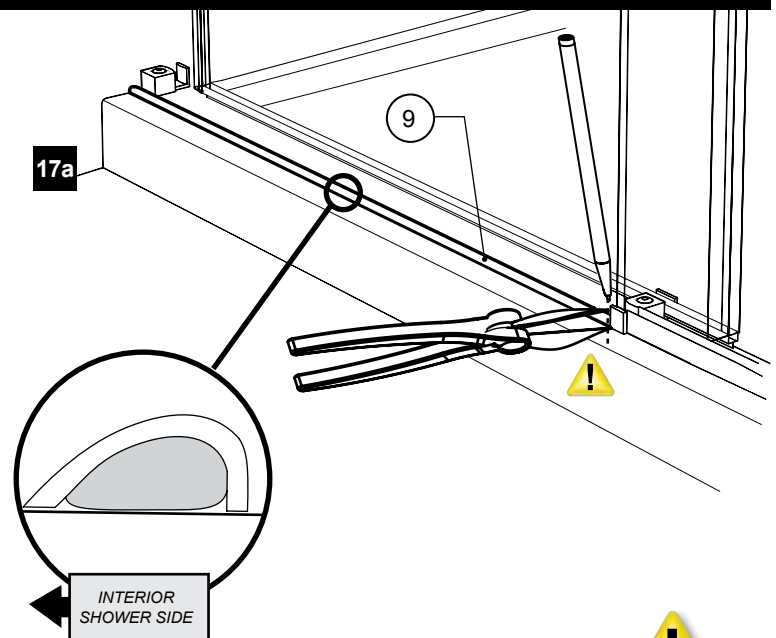
16c Insert one drop of silicone into hole.

16d Reposition and secure in place with provided screw then cap with screw cap.

**17 THRESHOLD**

17a Place threshold (9) between return panel u-channel and bottom guide as shown in figure 17a. Cut off any excess length.

17b Apply silicon on the bottom of threshold as indicated in 17b. Secure threshold in place.



CUT ONLY IF NECESSARY



18 SEALING

18a Silicone the outside of the shower unit along the wall jamb and the exterior side of aluminum threshold and U-channel.

18b Wait 24 hours before using the shower to allow silicon to dry.

