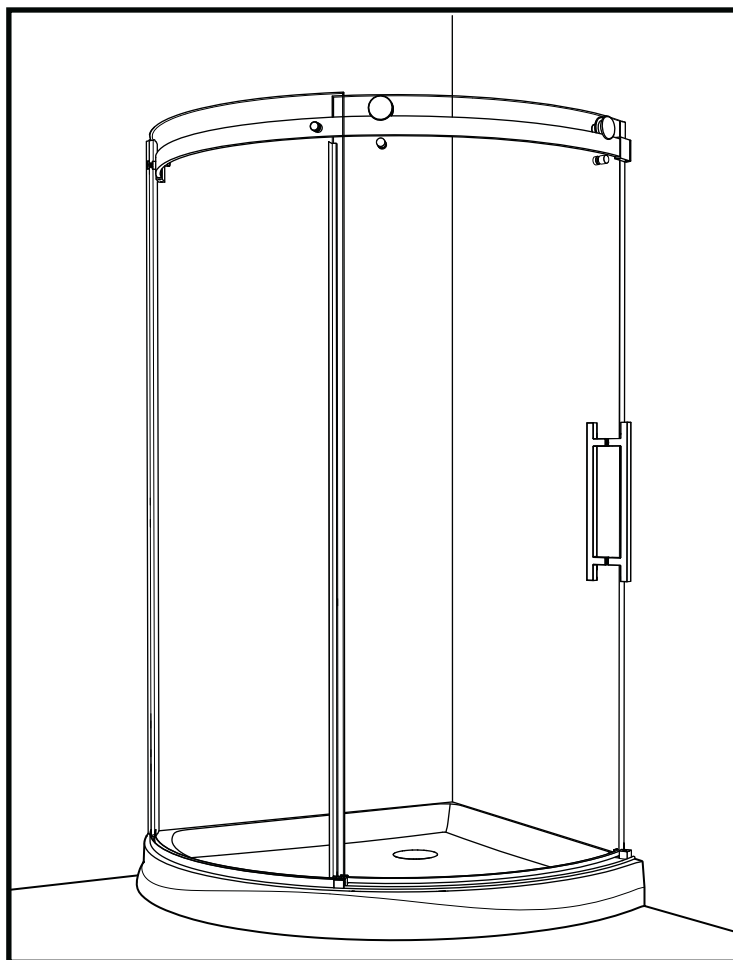


WA-40-75

INSTRUCTION MANUAL

 **ALUMAX**
Kula Collection

SHOWER DOOR



05.11



2 PEOPLE REQUIRED



IT IS MANDATORY TO HAVE A WALL STUD ON EACH SIDE OF THE SHOWER UNIT TO SECURELY FASTEN THE RAIL TO THE WALLS.

KW006

GENERAL INSTRUCTIONS

- *Read this manual carefully and completely before proceeding.*
- *It is recommended that you wear safety glasses at all times during the installation.*

INSTALLATION OVER CERAMIC TILES

- *If your shower door is to be installed over ceramic tiles, the tiles should lay completely under the wall jamb.*
- *Silicone should be used to seal the gap where the ceramic tiles meet the fixed panel.*

NOTICE

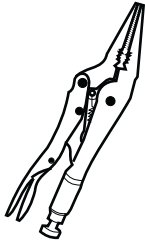
- *Caulking: no sealant is required inside the shower.*
- *Some models are equipped with clear sealing gaskets.*

CARE FOR YOUR SHOWER DOOR

- *Never use scouring powder pads or sharp instruments on metal pieces or glass panels. An occasional wiping down with a mild soap diluted in water is all that is needed to keep the panels and aluminum parts looking new.*
- *We recommend wiping the glass panels with a squeegee after each use.*

PRODUCT SPECIFICATIONS ARE SUBJECT TO CHANGE WITHOUT NOTICE.

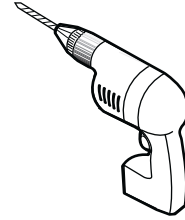
TOOLS AND MATERIAL REQUIRED



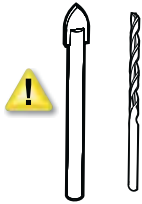
LONG NOSE LOCKING PLIER



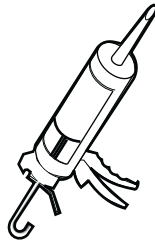
SCREWDRIVERS



DRILL



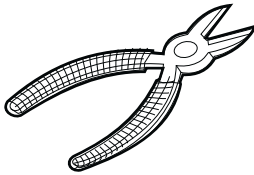
1/4" & 1/8" DRILL BITS



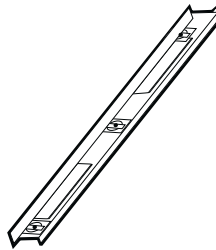
SILICONE



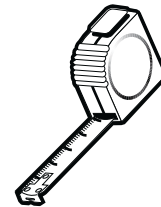
PENCIL



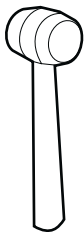
CUTTING PLIER



LEVEL



TAPE MEASURE



MALLET



RUBAN DOUBLE FACE VHB

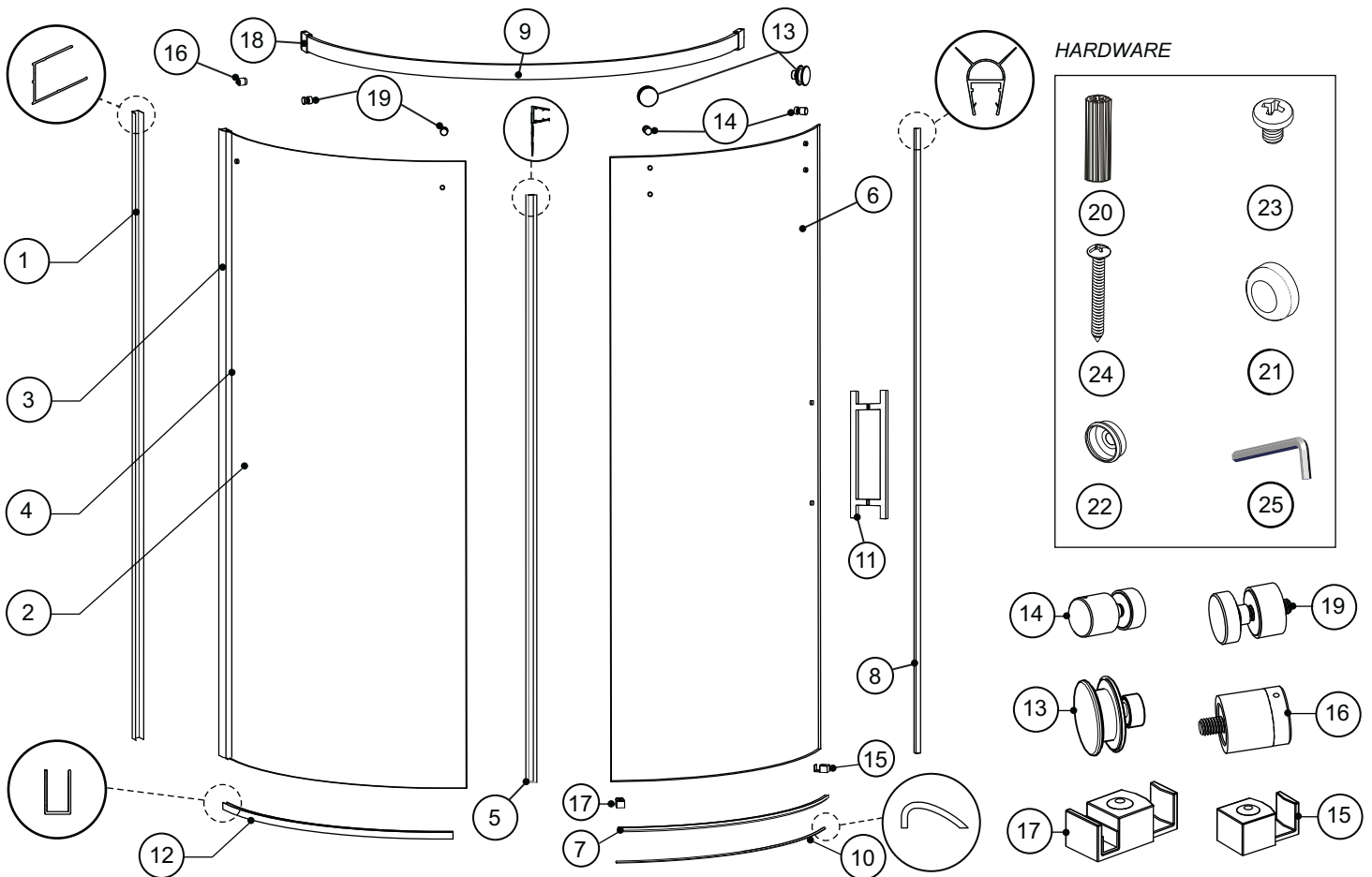


5/16" HEX NUT DRIVER



TO INSTALL THE SHOWER DOOR ON CERAMIC TILES, USE A 1/4" DRILL BIT FOR CERAMIC TILES.

PARTS LISTING

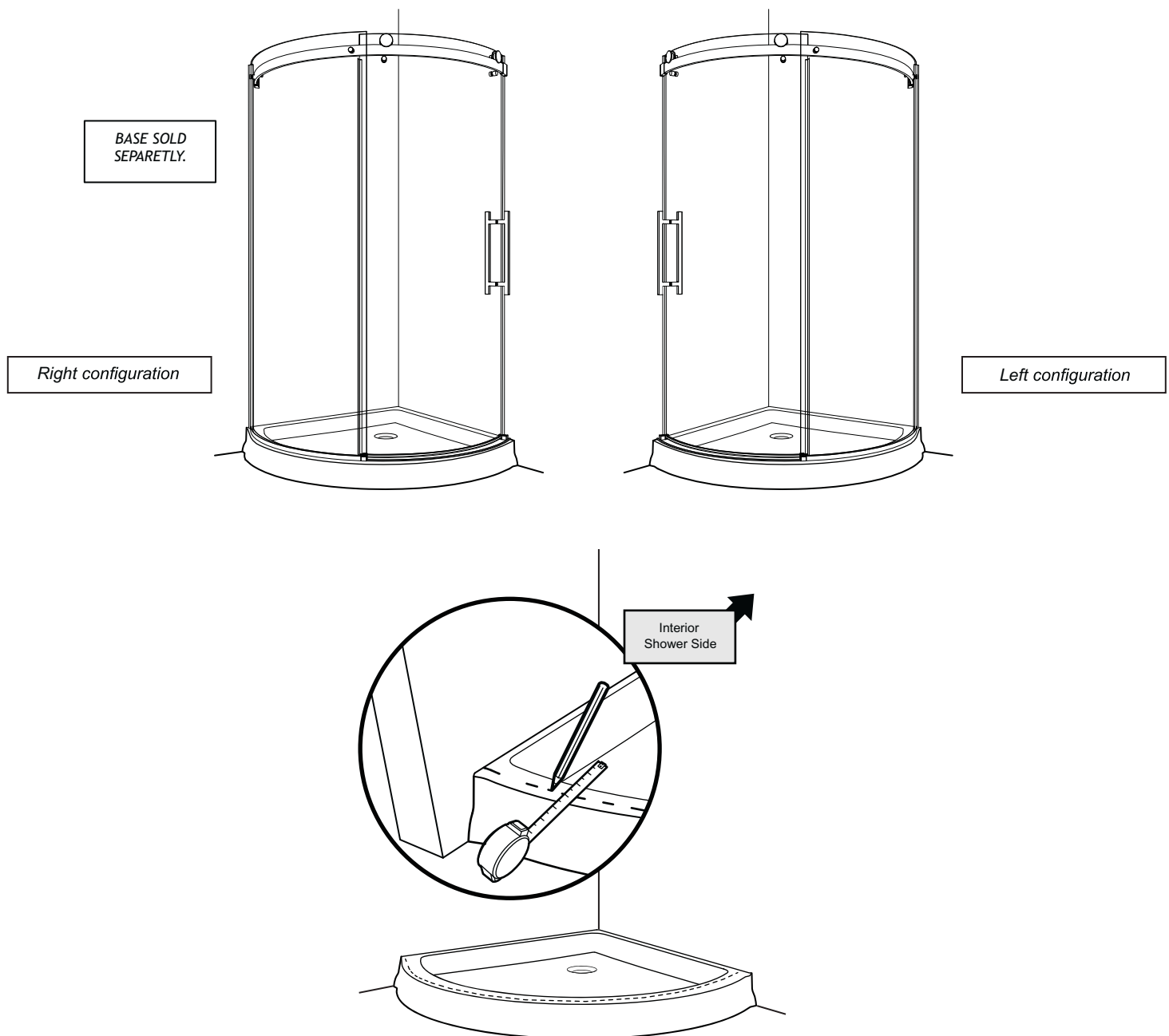


| ITEM | PARTS | QTY |
|------|---------------------------|-----|
| 1 | WALL JAMB (REGULAR PUNCH) | 1 |
| 2 | FIXED PANEL | 1 |
| 3 | UNIVERSAL EXPANDER | 1 |
| 4 | FIXED PANEL GASKET | 1 |
| 5 | MIDGASKET | 1 |
| 6 | DOOR PANEL | 1 |
| 7 | BOTTOM DOOR GASKET | 1 |
| 8 | DOOR SIDE GASKET | 1 |
| 9 | RUNNING RAIL | 1 |
| 10 | DOOR FRONT THRESHOLD | 1 |
| 11 | STRAIGHT HANDLE BAR | 1 |
| 12 | U CHANNEL | 1 |
| 13 | ROLLERS | 2 |
| 14 | ANTI-JUMP | 2 |
| 15 | DOOR RECEIVER | 1 |
| 16 | DOOR STOPPER | 1 |
| 17 | BOTTOM GUIDE | 1 |
| 18 | WALL MOUNT BRACKET | 2 |
| 19 | GLASS FASTENERS | 2 |
| ITEM | HARDWARE | QTY |
| 20 | WALL PLUG | 4 |
| 21 | SCREW CAP | 3 |
| 22 | BACK SCREW CAP | 3 |
| 23 | PAN SELF DRILLING SCREW | 3 |
| 24 | PAN SELF-DRILLING SCREW | 4 |
| 25 | 2 mm KEY | 1 |

POSSIBLE CONFIGURATIONS

Recommended door panel according to showerhead location. Choose right or left door opening, according with recommendations.

Trace a centerline on the threshold of the base. Determine on which side the wall jamb will be mounted.



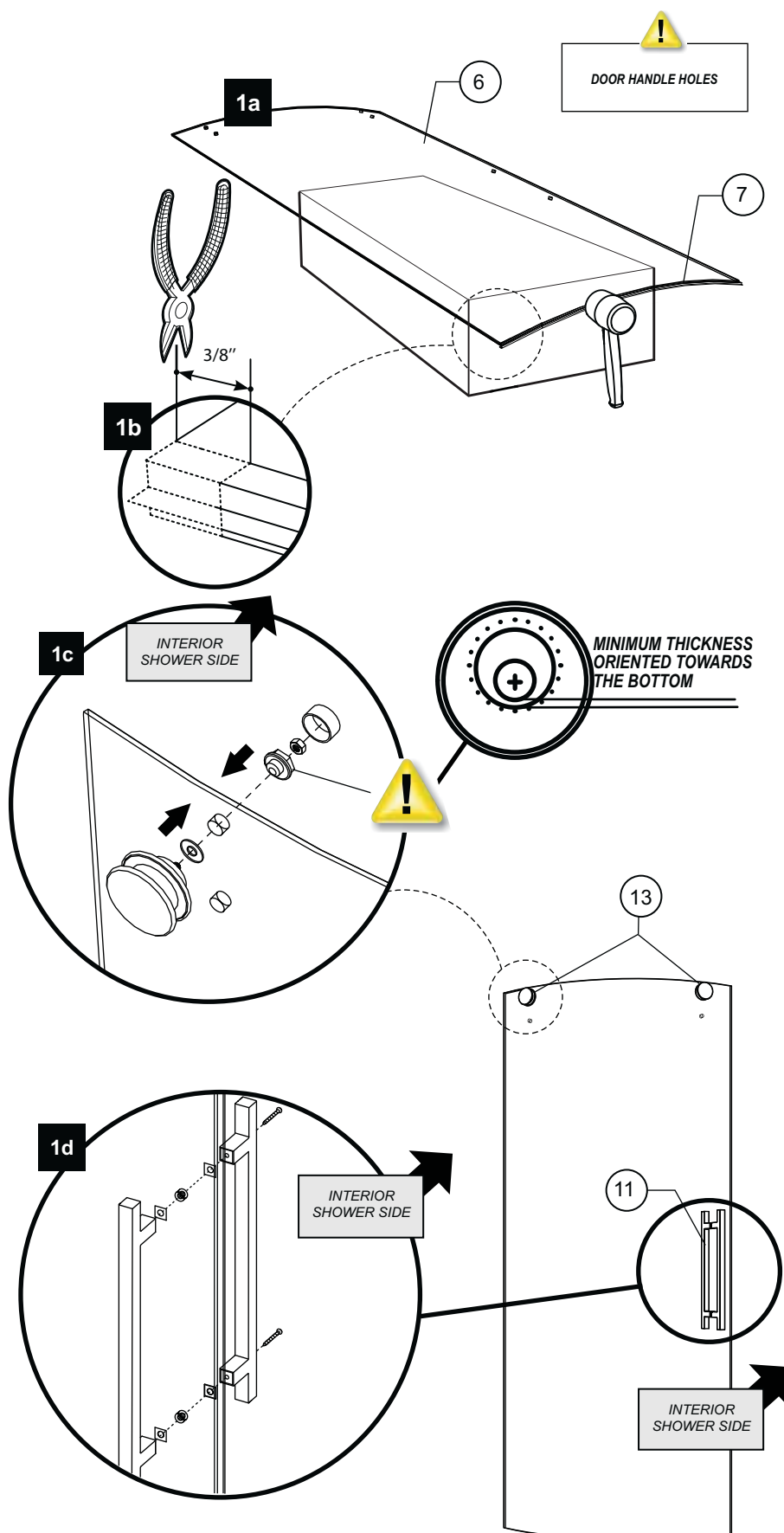
1 DOOR PANEL ASSEMBLY

1a Use a mallet to install the bottom gasket (7) on the bottom of the door panel (6). To facilitate installation place the door panel on the cardboard packaging box and use it as platform. Notice that the holes are situated at the top of the door panel.

1b Measure and cut 3/8" off the edge of the gasket. Cut on the opposing side of the door handle holes.

1c Install both rollers (13) through the top holes of the door panel. Be sure that the adjustment wheels are turned on the position of the minimum thickness that is orientated towards the bottom.

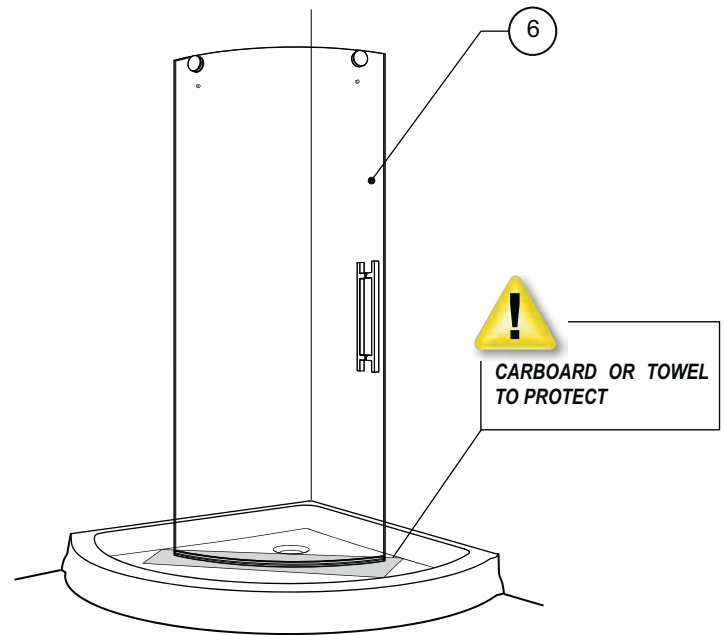
1d Install the door handle (11). Holes for the screws are located on the back of the handle that must be located on the interior of the shower area.



1 DOOR PANEL ASSEMBLY (CONTINUED)

- 1e** Place door panel (6) inside the shower area to simplify following installation procedures. Place the panel on a cushioned surface, such as a towel or carboard, to prevent damage either to the panel or to the base.

1e

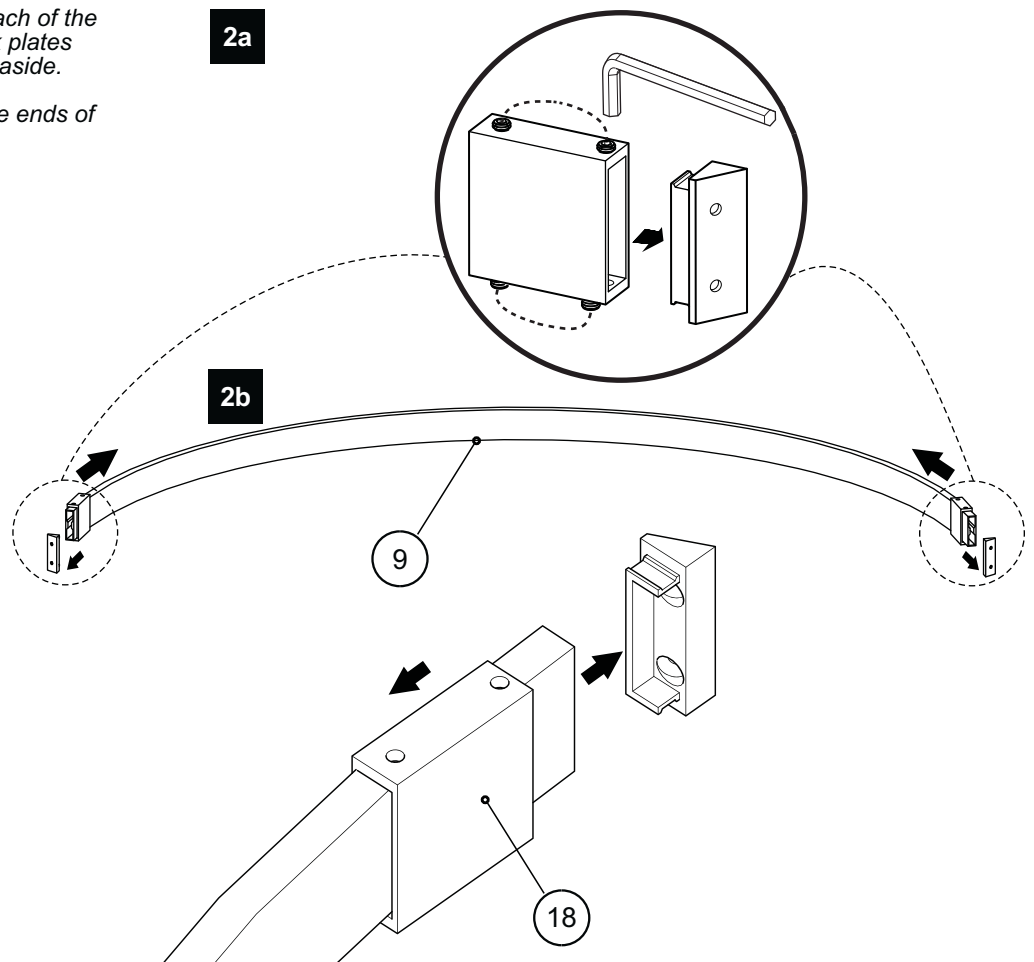


2 RUNNING RAIL

- 2a** Unfasten the set screws (x4) from each of the wall brackets (18). Remove the back plates from the wall brackets and set them aside.

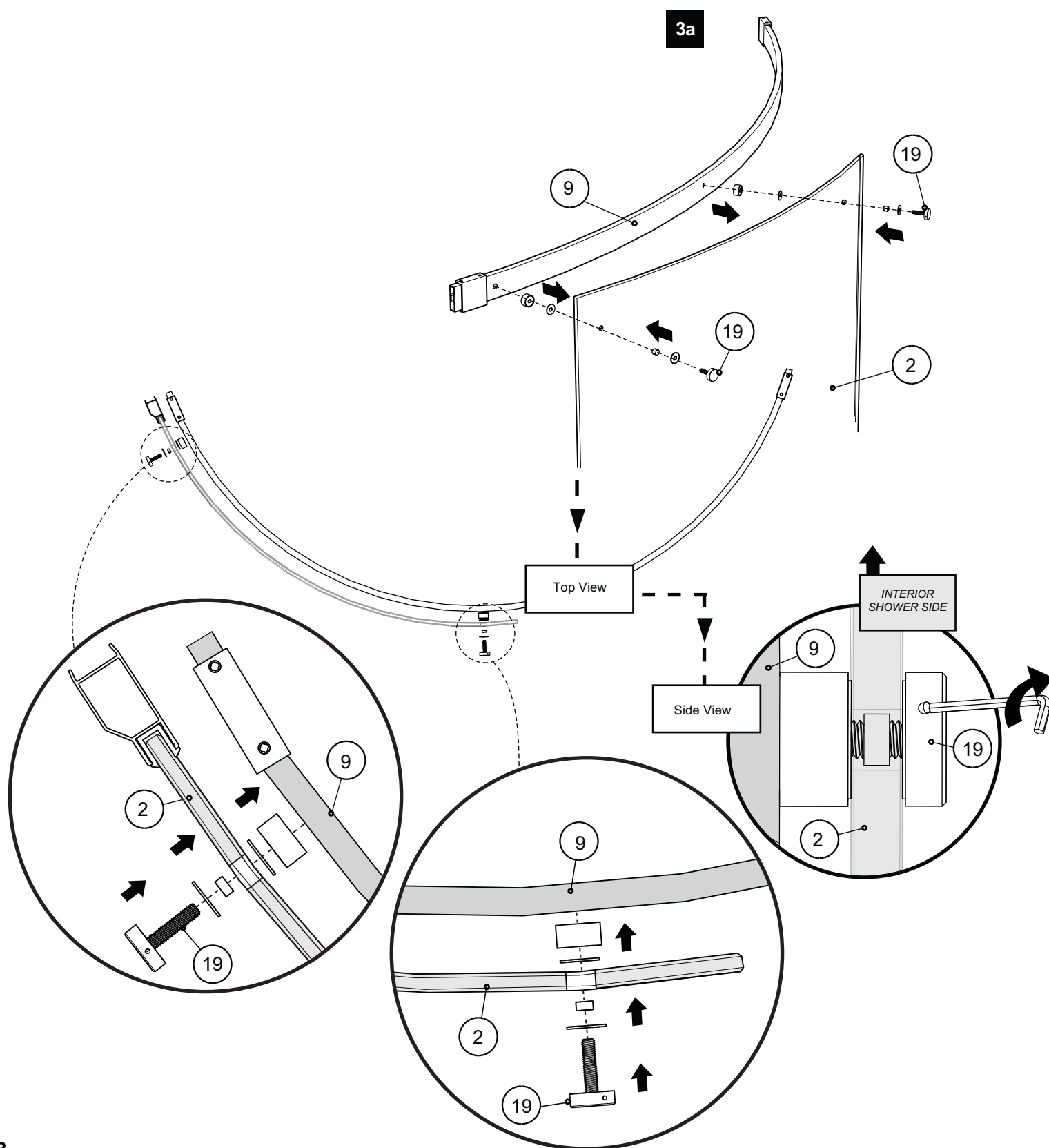
2a

- 2b** Slide the wall brackets away from the ends of the running rail (9) as illustrated.



3 FIXED PANEL ASSEMBLY

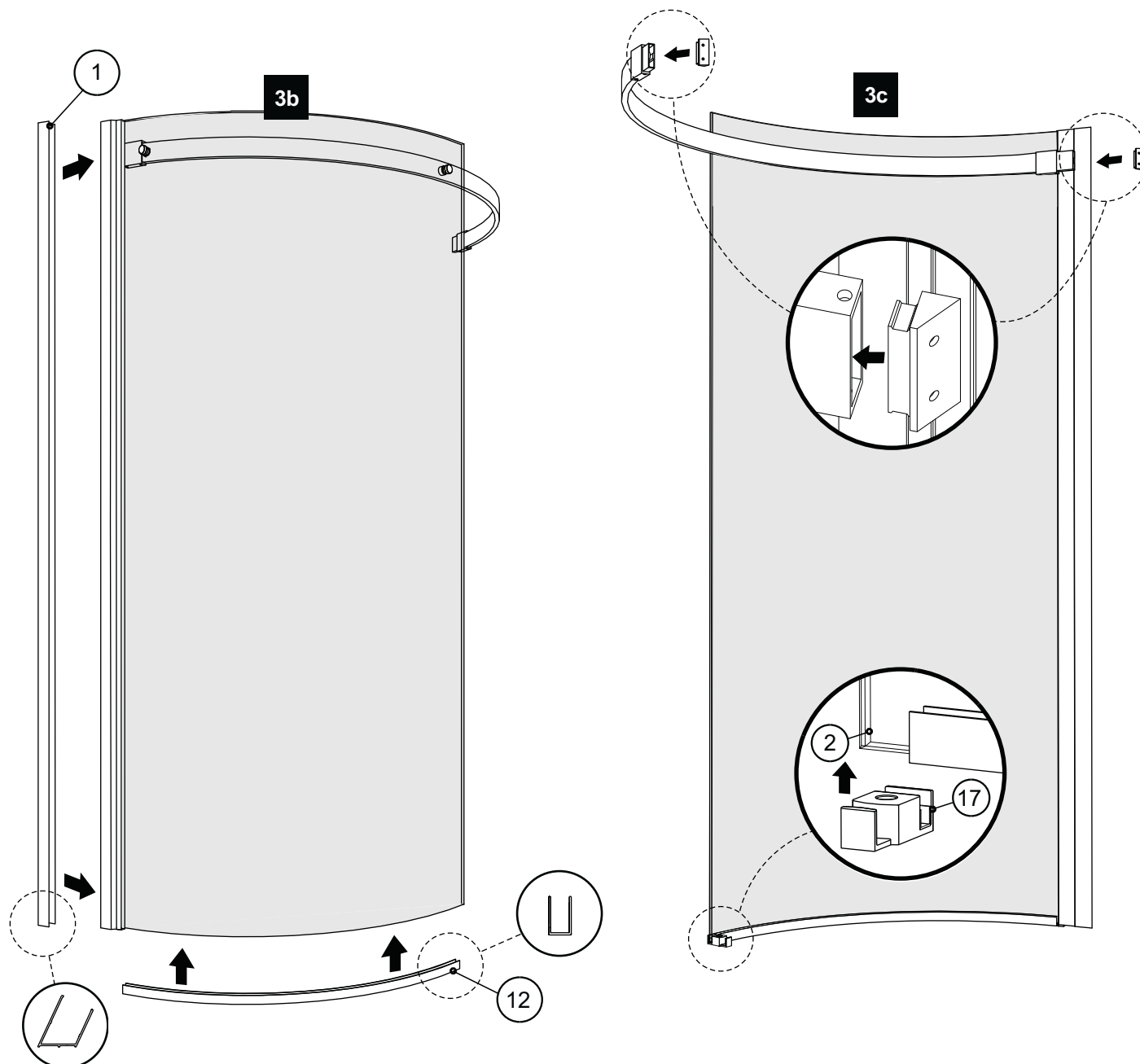
- 3a** Assemble the fixed panel with the running rail. Align running rail holes with the holes of the fixed panel. Install glass fasteners(19) to join the fixed panel(2) and the running rail (9). Be sure to place gaskets between all contact with glass and metal parts. Fasten with hex 3mm key.



3 FIXED PANEL ASSEMBLY (CONTINUED)

3b Place U-channel (12) temporarily on the bottom of the fixed panel (2). Slide the fixed panel (2) pre-assembled with expander (3) and gasket (4) into the wall jamb (1). Level the glass panel assembly with the wall jamb.

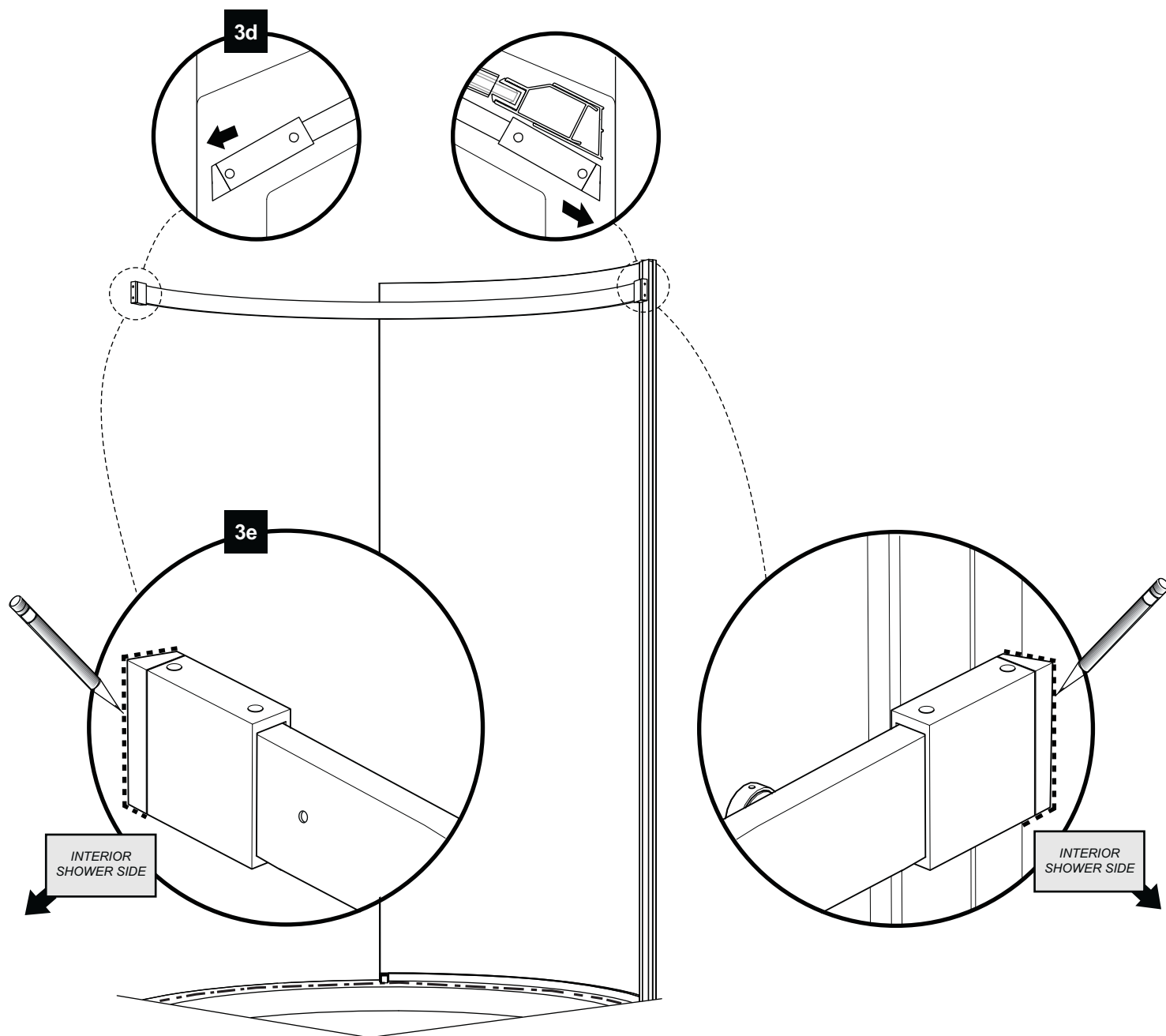
3c Reassemble temporarily the angled wall back plate to the wall brackets on the running rail. Temporarily place bottom guide (17) on the bottom of the fixed panel (2).



3 **FIXED PANEL ASSEMBLY (CONTINUED)**

3d Place temporarily the fixed panel assembly on the threshold of the base on the line that was marked previously. Push wall brackets against wall (x2) and level.

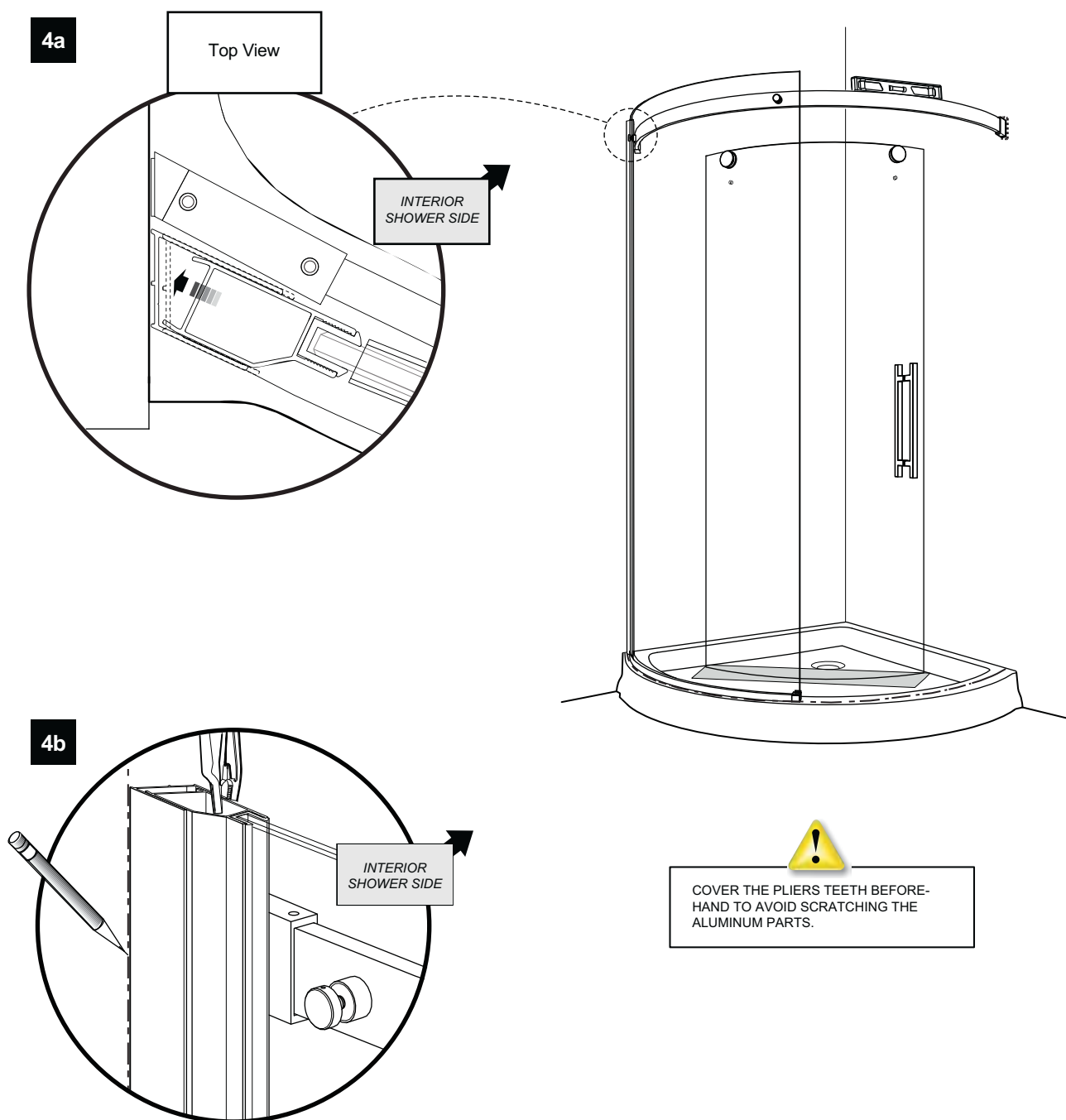
3e Trace the outer edges of the wall brackets (x2).



4 WALL JAMB INSTALLATION

4a Push the wall jamb against the wall. Level the glass panel assembly with the wall jamb.

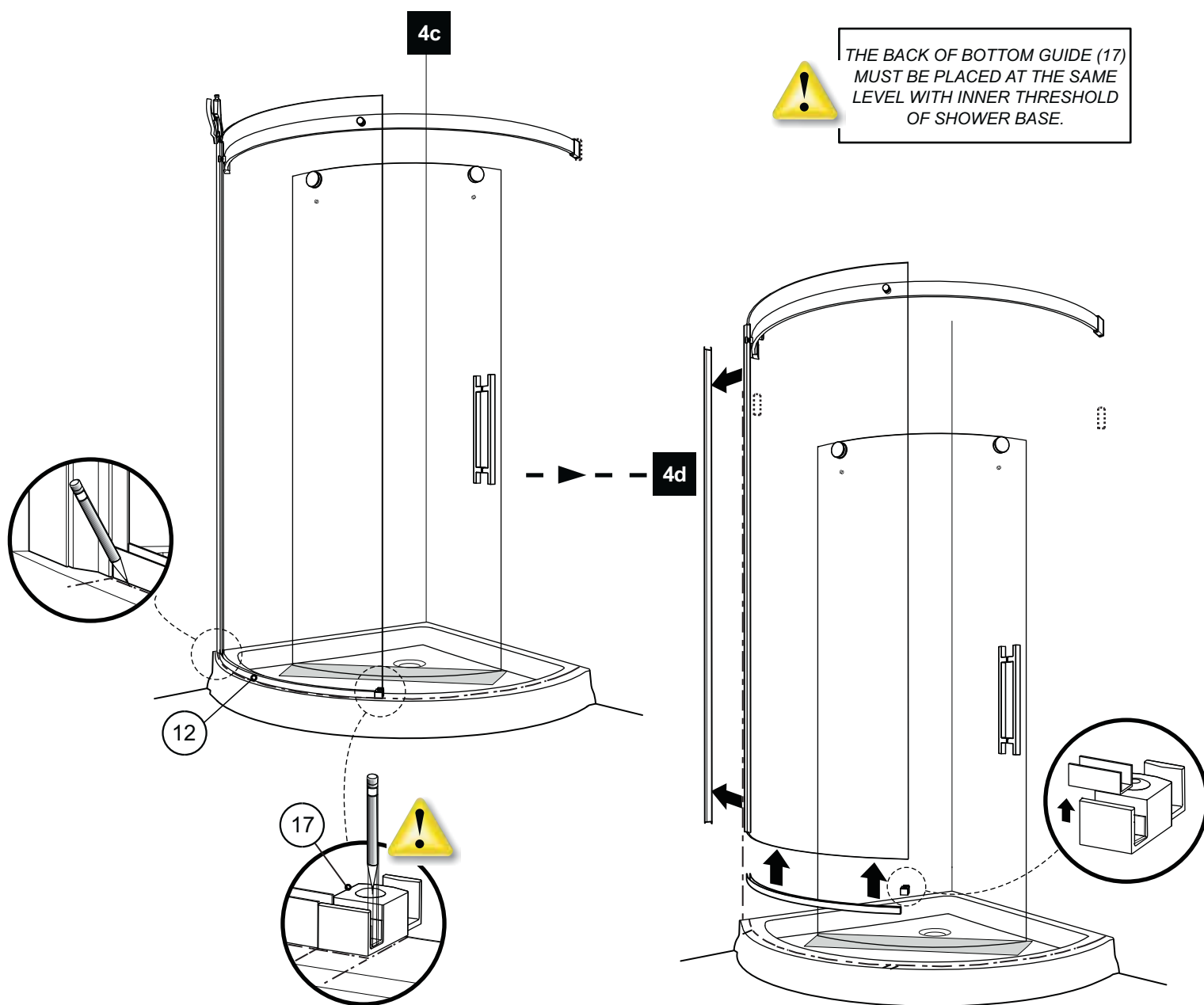
4b Lock into position by clamping the wall jamb and expander with pliers. Trace the position of the wall jamb on the wall as illustrated.



4 WALL JAMB INSTALLATION (CONTINUED)

4c Trace the position of the U channel (12) and of the bottom guide (17) on the threshold of the base. Mark the location of the bottom guide's hole.

4d Remove the fixed panel assembly with the running rail along with the wall jamb, wall brackets the U-channel and the bottom guide. Put aside. Remove the gasket from the bottom guide.

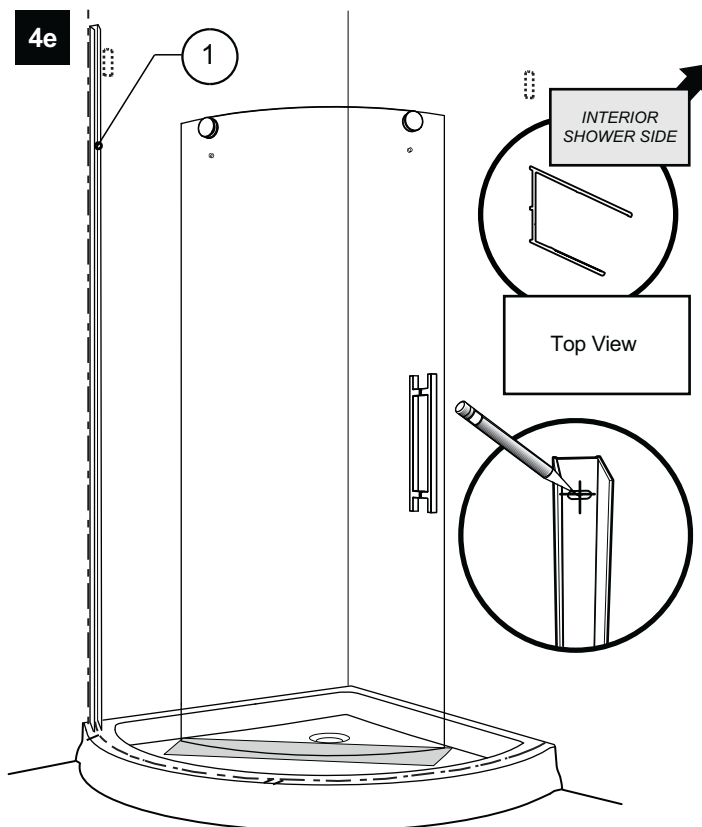


4 WALL JAMB INSTALLATION (CONTINUED)

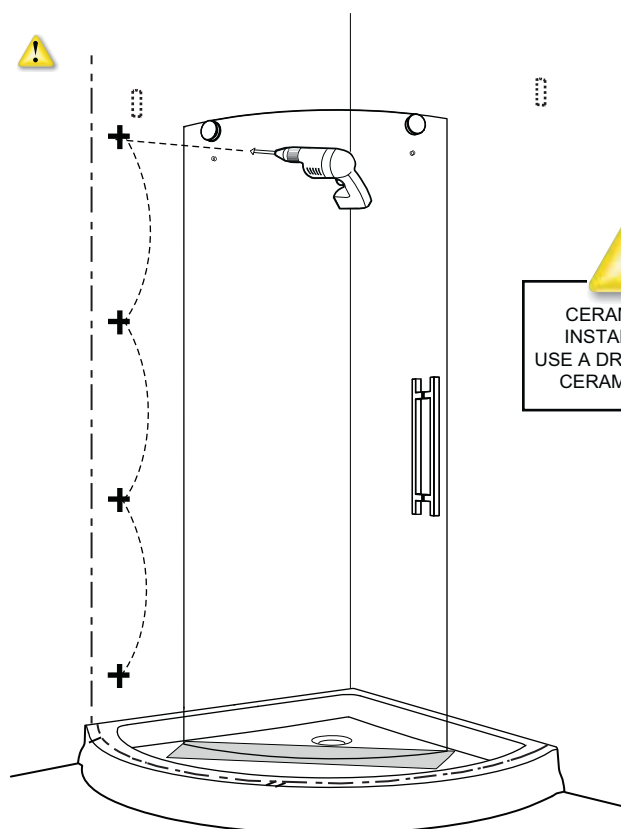
4e Replace the wall jamb against wall using the line previously marked as a guide. Level and mark locations of the four holes to be drilled. Remove the wall jamb.

4f Drill a hole in each location with a 1/4" drill bit.

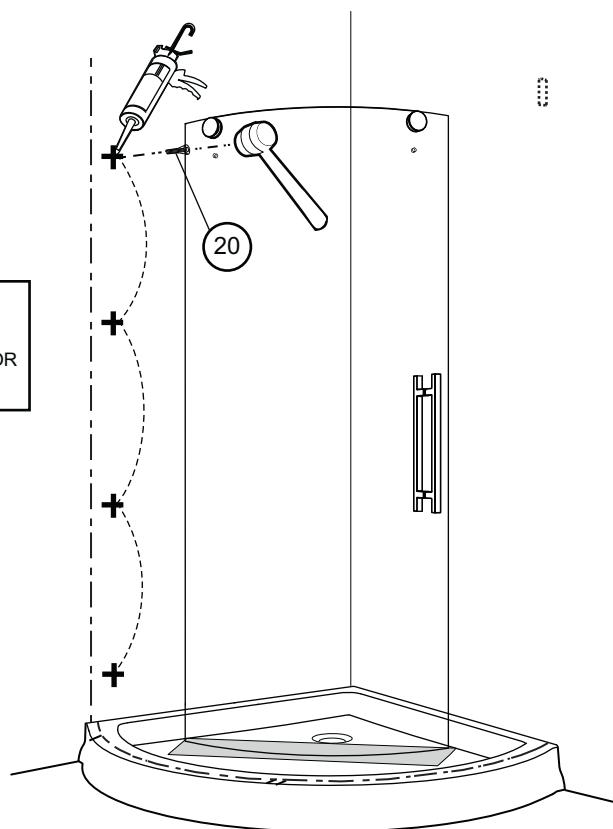
4g Insert one drop of silicone in each hole in the wall before inserting the supplied wall plugs(20), (x4).



4f



4g



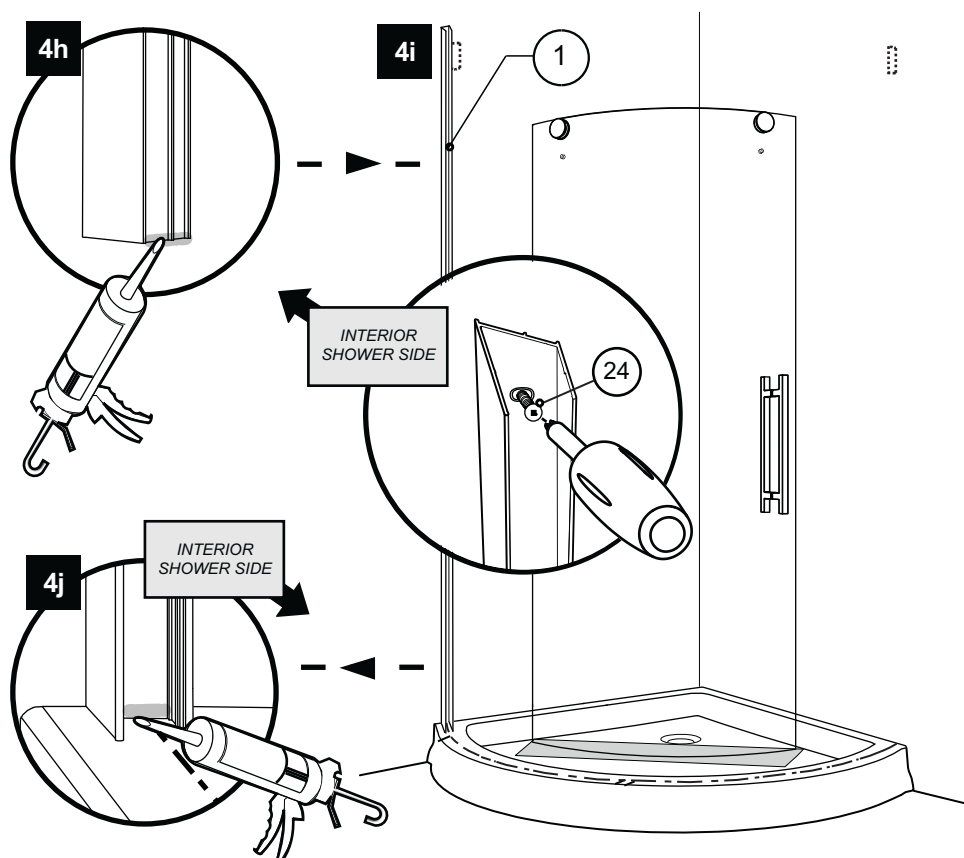
! CERAMIC TILE INSTALLATION USE A DRILL BIT FOR CERAMIC TILES

4 WALL JAMB INSTALLATION (CONTINUED)

4h Add silicone to the exterior bottom edge of the wall jamb.

4i Fasten the wall jamb to the wall with 1-1/4" screws (24) through the previously installed wall plugs. (x4)

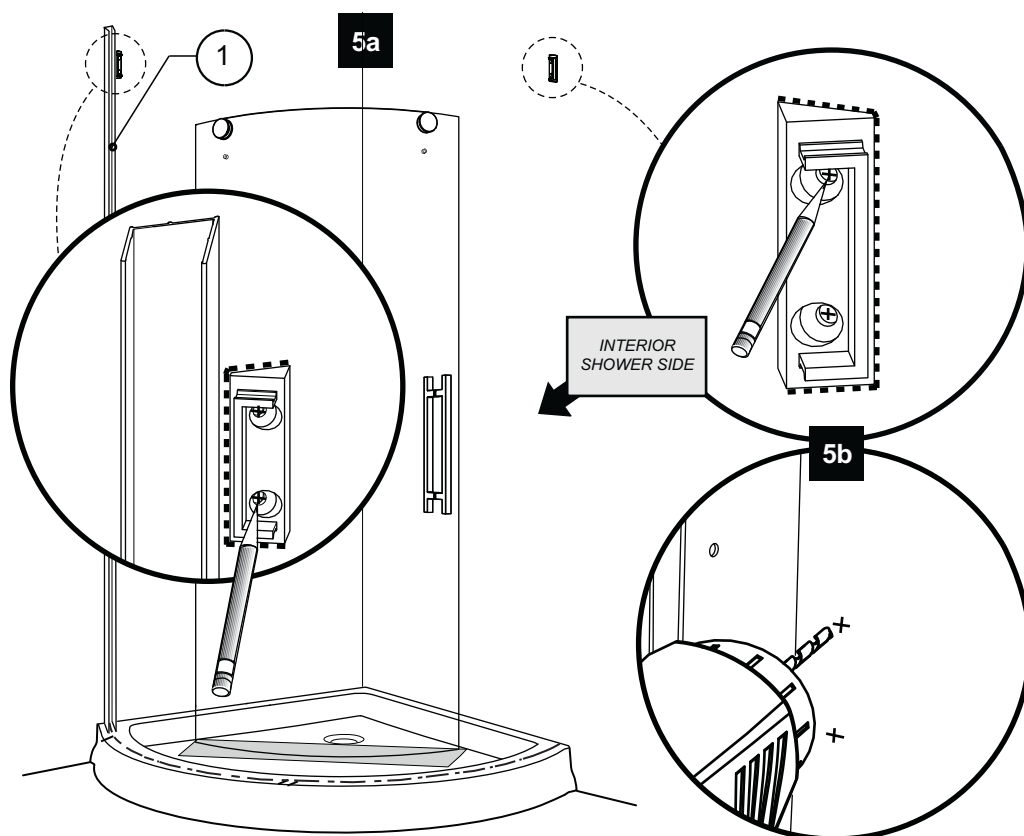
4j Add silicone to interior bottom edge of the wall jamb



5 WALL BRACKET BACK PLATE

5a Align the back plates of the wall bracket to previously traced mark lines on the wall. Trace the holes centers to determine drilling location (x2). Remove the back plates.

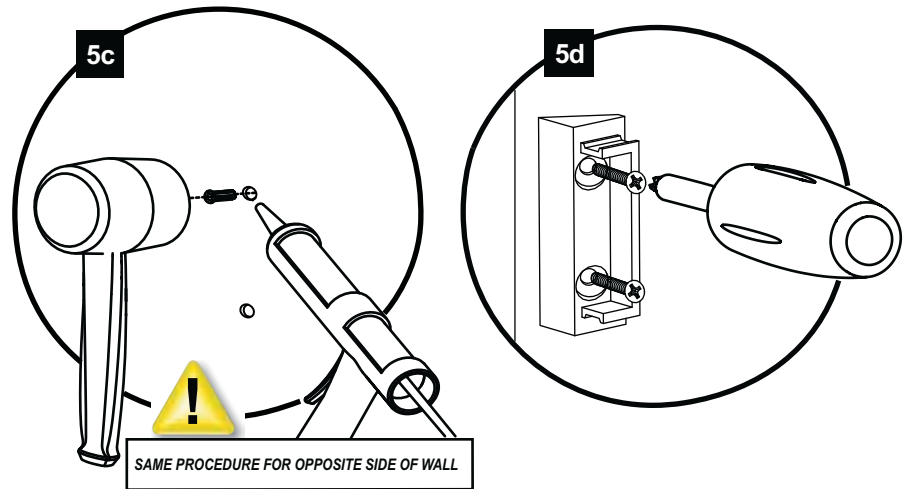
5b Drill marked holes in walls by using the 1/4" drill bit.



5 WALL BRACKET BACK PLATE (CONTINUED)

5c Insert one drop of silicone in each hole bored in the wall before inserting the wall plugs.

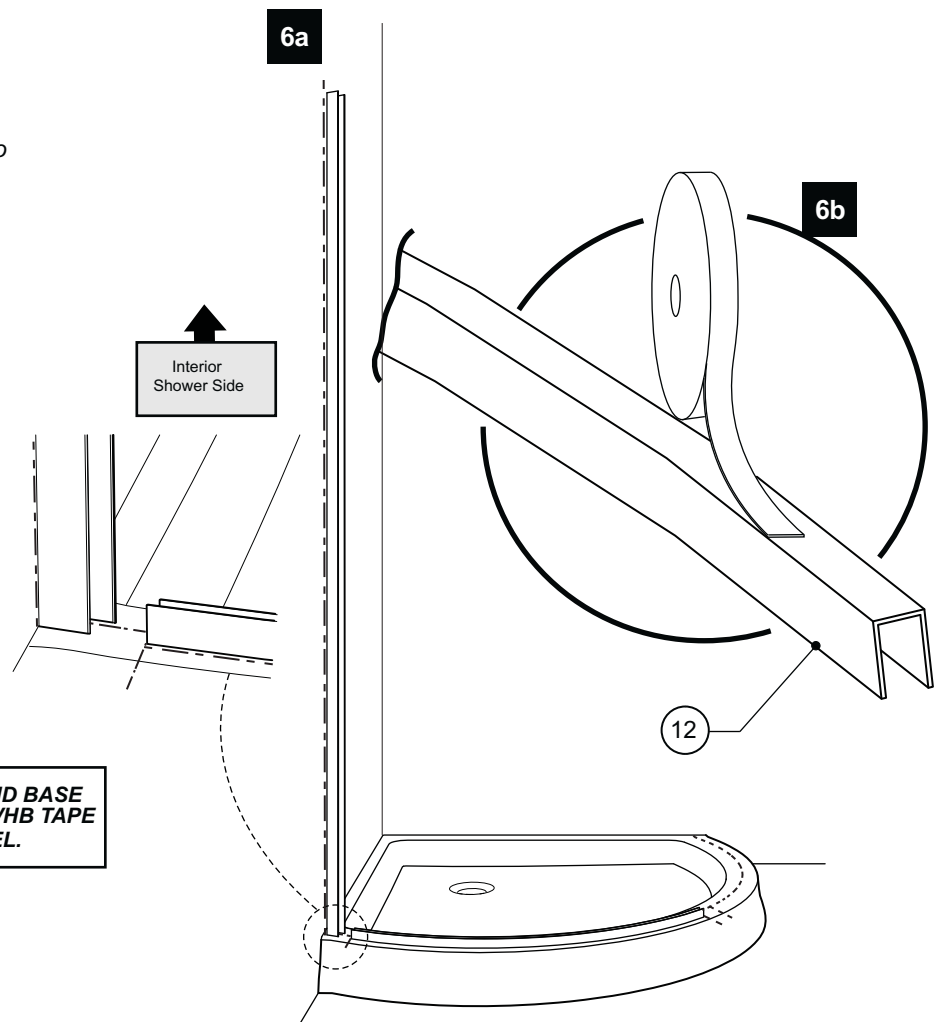
5d Screw in flat head screws through holes to secure back plate of bracket to wall (x2)



6 U-CHANNEL LOCATION

6a Apply double sided VHB tape to the bottom of the U-channel (12).

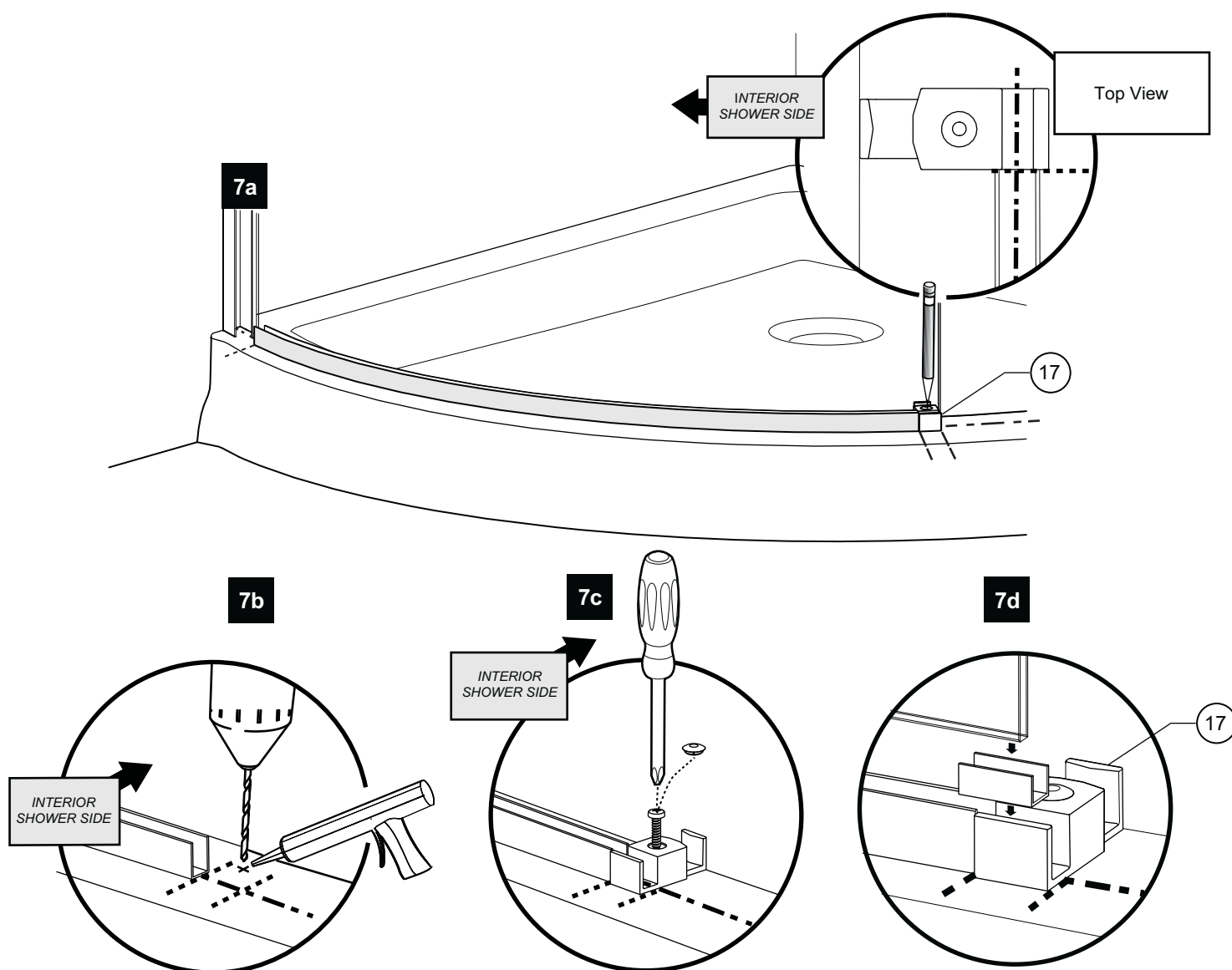
6b Place the u-channel against the wall jamb and align it to the line marked previously on base. Then press down to secure to the base.



CLEAN BOTTOM OF U-CHANNEL AND BASE BEFORE APPLYING DOUBLE SIDED VHB TAPE TO UNDERSIDE OF U-CHANNEL.

7 BOTTOM GUIDE INSTALLATION

- 7a** Place bottom guide to the edge of the U-Channel .Center the front bottom guide channel to the center of the U-Channel. Once in place mark hole location and remove bottom guide.
- 7b** Drill with 1/8" drill bit in marked location, then apply a drop of silicone in hole.
- 7c** Reposition bottom guide and secure in place. Top with screw cap.
- 7d** Place the gasket in the bottom guide.

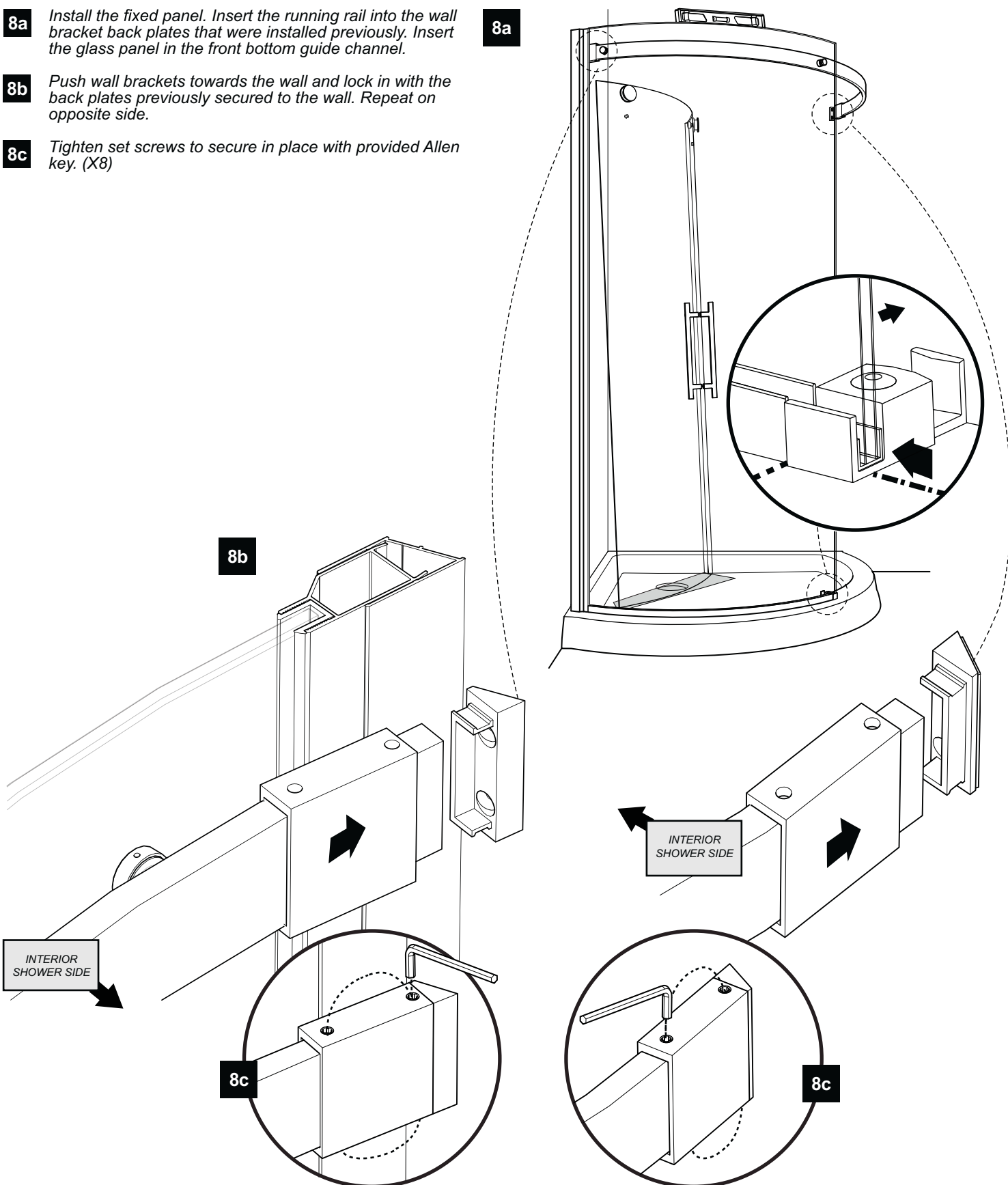


8 FIXED PANEL INSTALLATION

8a Install the fixed panel. Insert the running rail into the wall bracket back plates that were installed previously. Insert the glass panel in the front bottom guide channel.

8b Push wall brackets towards the wall and lock in with the back plates previously secured to the wall. Repeat on opposite side.

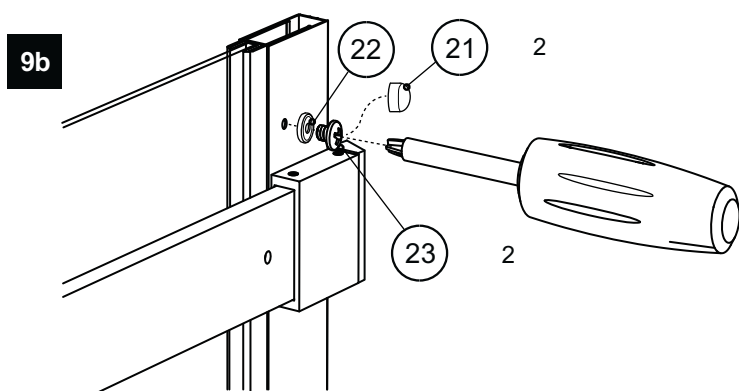
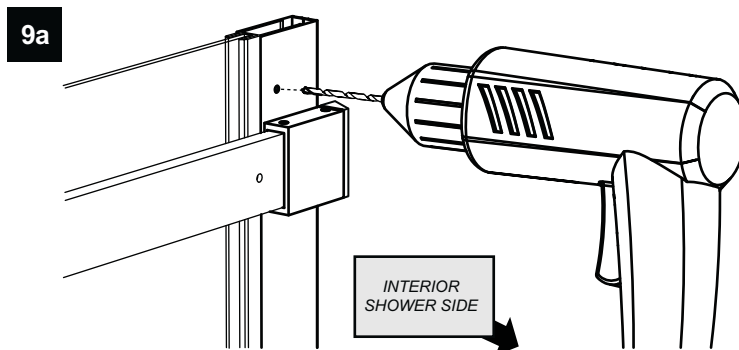
8c Tighten set screws to secure in place with provided Allen key. (X8)



9 SECURE THE WALL JAMB AND EXPANDER

9a Drill through the wall jamb a hole with the 1/8" drill bit, to pierce through the expander. (x3)

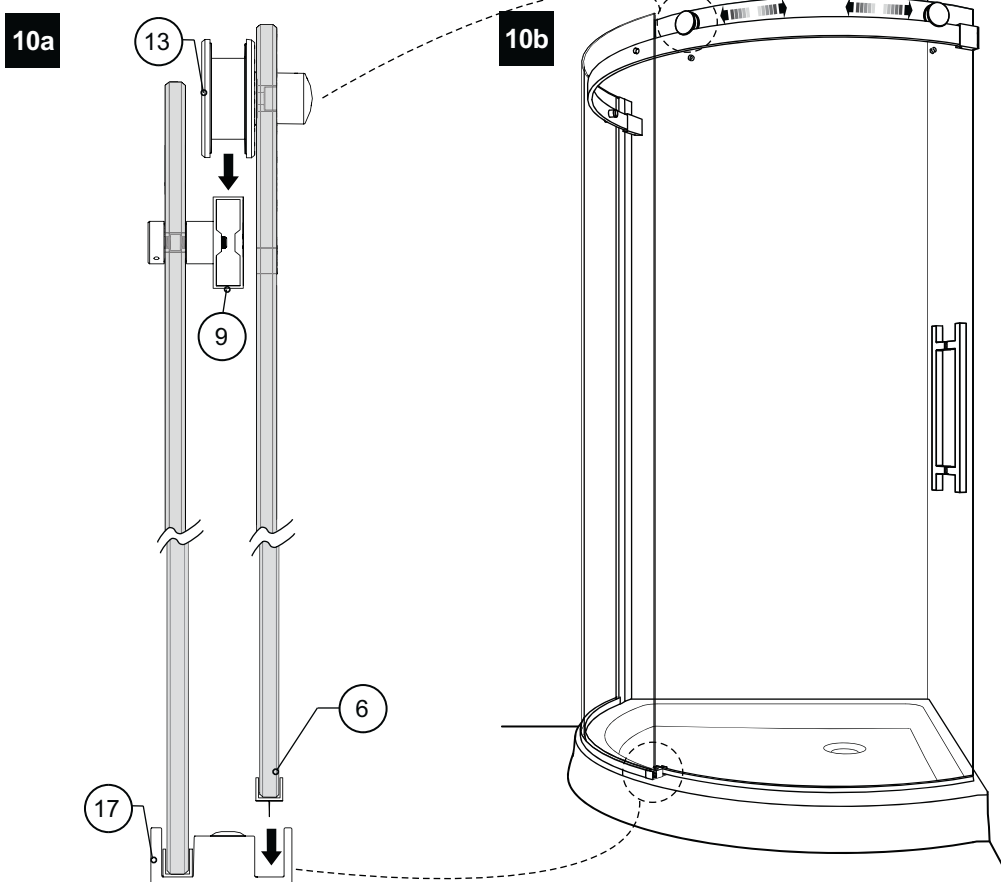
9b Screw 3/4" screws (23) through holes to hold expander and wall jamb together in place. (x3) Cover all screws with screw caps (21).



10 DOOR PANEL INSTALLATION

10a Install door panel (6) by aligning the rollers (13) on running rail (9) and by aligning the door panel (6) with the back channel of bottom guide (17)

10b Slide door to insure a smooth stable glide.



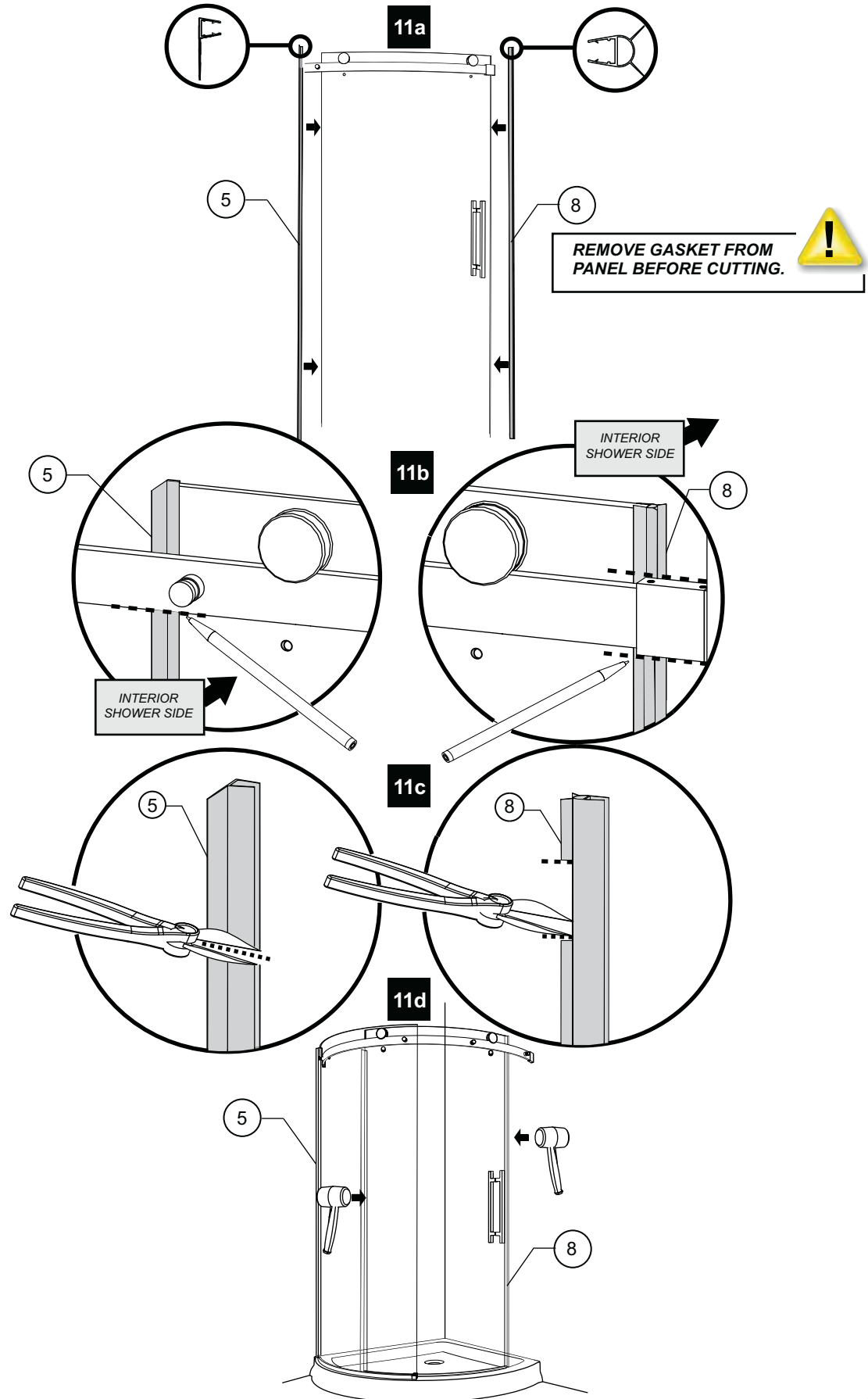
11 DOOR GASKETS INSTALLATION

11a Temporarily install midgasket (5) and the door gasket (8) to door panel.

11b Close door entirely, mark interference of the gaskets with the running rail.

11c Cut gasket at marked locations using cutters. Note that midgasket (5) needs only to be cut below the running rail. The top part is no longer required for assembly.

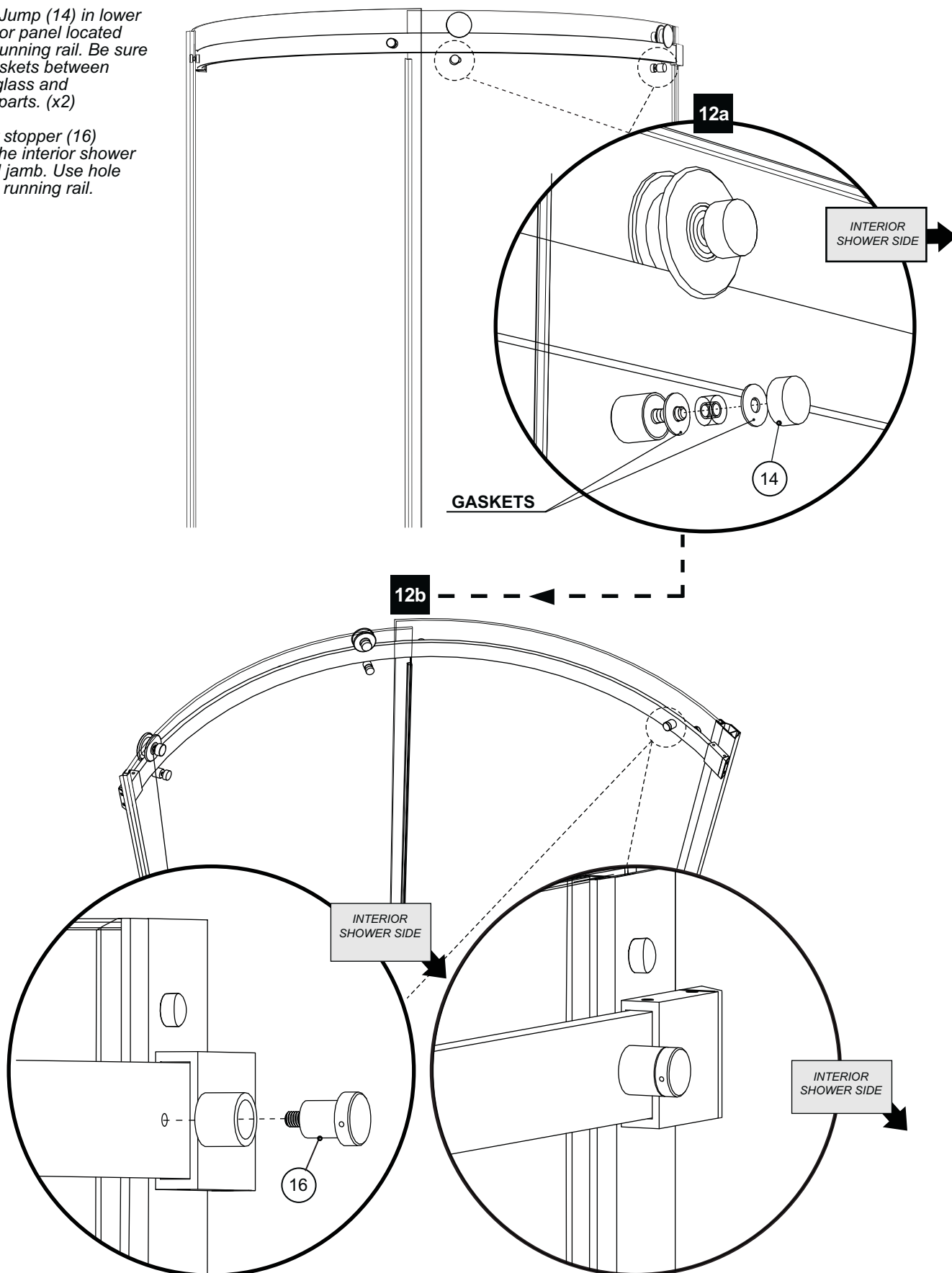
11d Reinstall gaskets from bottom working your way up. Use a mallet to insure that the gaskets are fully pushed onto glass panel door.



12 ANTI-JUMP & DOOR STOPPER

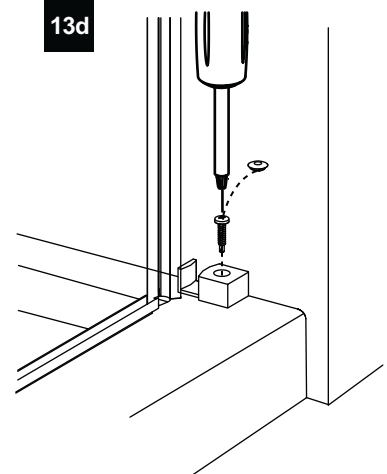
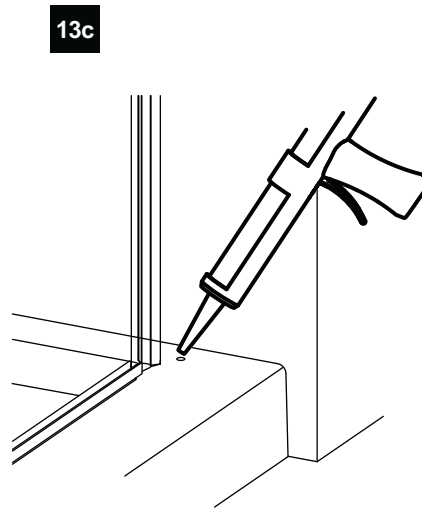
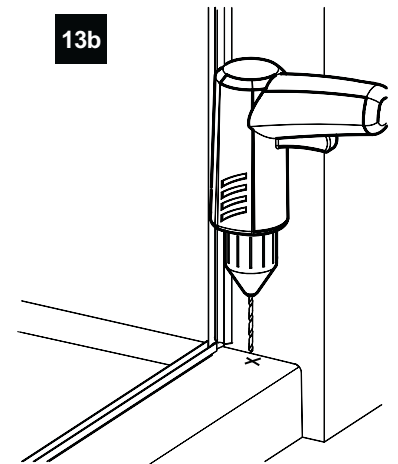
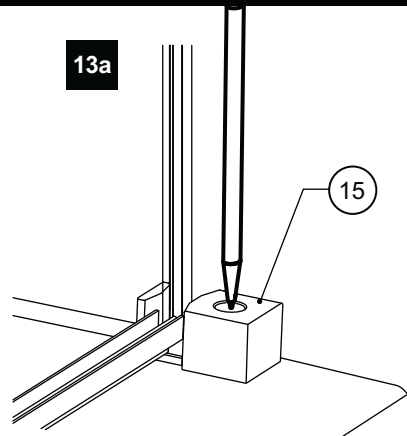
12a Install Anti-Jump (14) in lower holes of door panel located below the running rail. Be sure to place gaskets between contact of glass and aluminium parts. (x2)

12b Install door stopper (16) located in the interior shower next to wall jamb. Use hole provided in running rail.



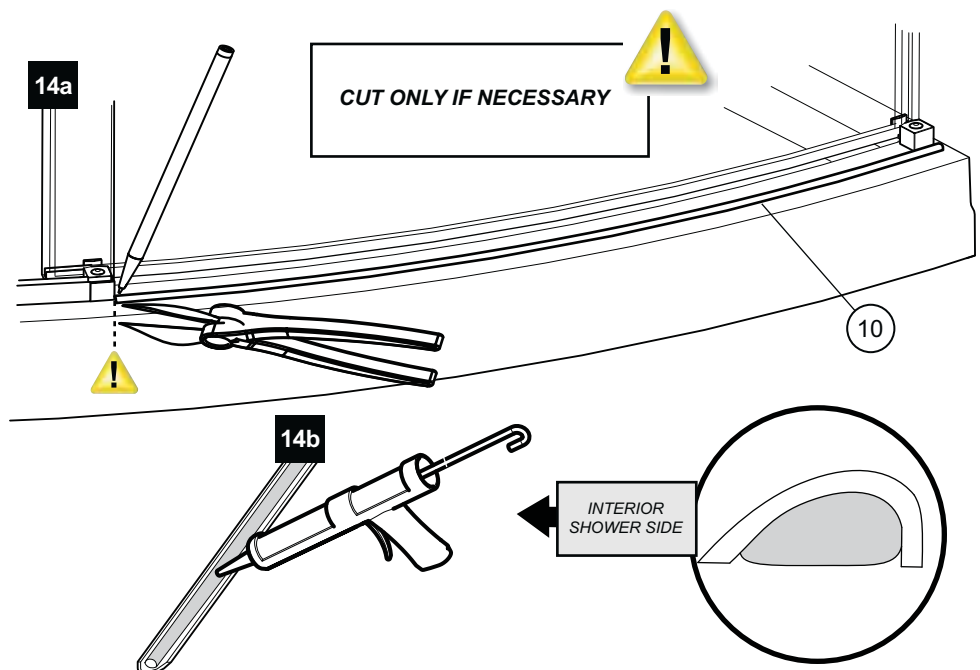
13 DOOR RECEIVER INSTALLATION

- 13a** Place door receiver (15) against the wall, so that the door panel slides smoothly into the receiver. Mark hole location.
- 13b** Remove door receiver and drill in marked location with 1/8" drill bit.
- 13c** Insert one drop of silicone into hole.
- 13d** Reposition and secure in place with provided screw then place the screw cap.



14 THRESHOLD

- 14a** Place threshold (10) between wall and bottom guide as shown in figure 14a. Cut off any excess length.
- 14b** Apply silicon on the bottom of threshold as indicated in 14b. Secure threshold in place.



15 SEALING

15a Silicone the outside of the shower unit along the wall jamb and the exterior side of aluminum threshold and U-channel.

15b Wait 24 hours before using the shower to allow silicon to dry.

