

P-DRA1Y
OWNER'S MANUAL

Alumax
PIPELINE

SHOWER ENCLOSURE



2 PEOPLE REQUIRED

06.10



**IT IS MANDATORY TO HAVE A WALL STUD ON EACH SIDE OF THE
SHOWER UNIT TO SECURELY FASTEN THE RAIL TO THE WALLS.**

P010

TABLE OF CONTENTS

KTWK40-XX-4008R BILL OF MATERIALS.....	3
KTWK40-XX-4008L BILL OF MATERIALS.....	4
HARDWARE.....	5
TOOLS.....	5
INTRODUCTION NOTE.....	6
DOOR PANEL PLACEMENT.....	6
RUNNING RAIL.....	7
GLASS FASTENERS.....	8
FIXED PANEL PLACEMENT.....	9
FIXED PANEL PLACEMENT (CONTINUED).....	10, 11, 12
TOP ROLLERS INSTALLATION.....	12
DOOR PANEL PLACEMENT.....	13
BOTTOM ROLLERS INSTALLATION.....	13
STRAIGHT HANDLE INSTALLATION.....	14
DOOR PANEL GASKET INSTALLATION.....	14
WALL SIDE GASKET INSTALLATION.....	15
STOPPERS ADJUSTMENT.....	15
THRESHOLD INSTALLATION.....	16

GENERAL INSTRUCTIONS

- Read this manual carefully and completely before proceeding.
- Product specifications are subject to change without notice. Use the installation instructions supplied with the product.

● SAFETY

- It is recommended that you wear safety glasses at all times during the installation.
- At all times, 2 people are required for this installation.

● WATERPROOFING

- No sealant is required inside the shower.
- All models are equipped with transparent sealing gaskets.
- For models with wall jambs, if your shower door is to be installed over ceramic tiles, the tiles should lay completely under the wall jambs.

● MAINTENANCE

- Never use scouring powder pads or sharp instruments on metal pieces or glass panels.
- An occasional wiping down with a mild soap diluted in water is all that is needed to keep the panels and aluminum parts looking new.
- We recommend wiping the glass panels with a squeegee after each use.

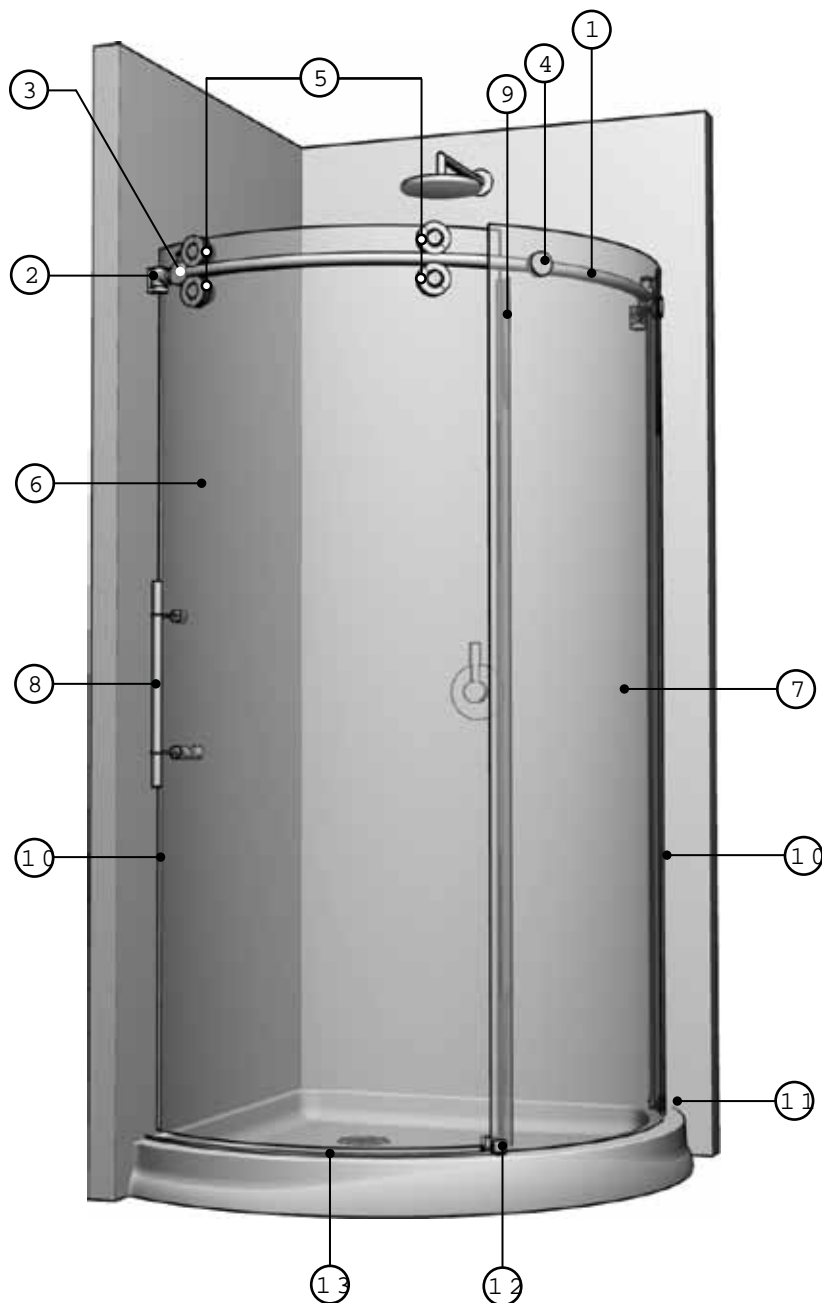


ABB40-13 / BISCUIT
ABB40-18 / WHITE



ITEM	PARTS	QTY
1	RUNNING RAIL	1
2	WALL BRACKETS	2
3	STOPPERS	2
4	GLASS FASTENERS	2
5	TWIN ROLLERS	2
6	SLIDING DOOR PANEL	1
7	FIXED PANEL	1
8	STRAIGHT HANDLE	1
9	DOOR PANEL GASKET	1
10	WALL SIDE GASKET	1
11	BOTTOM GLASS CLIP	1
12	BOTTOM CENTER GUIDE	1
13	THRESHOLD	1

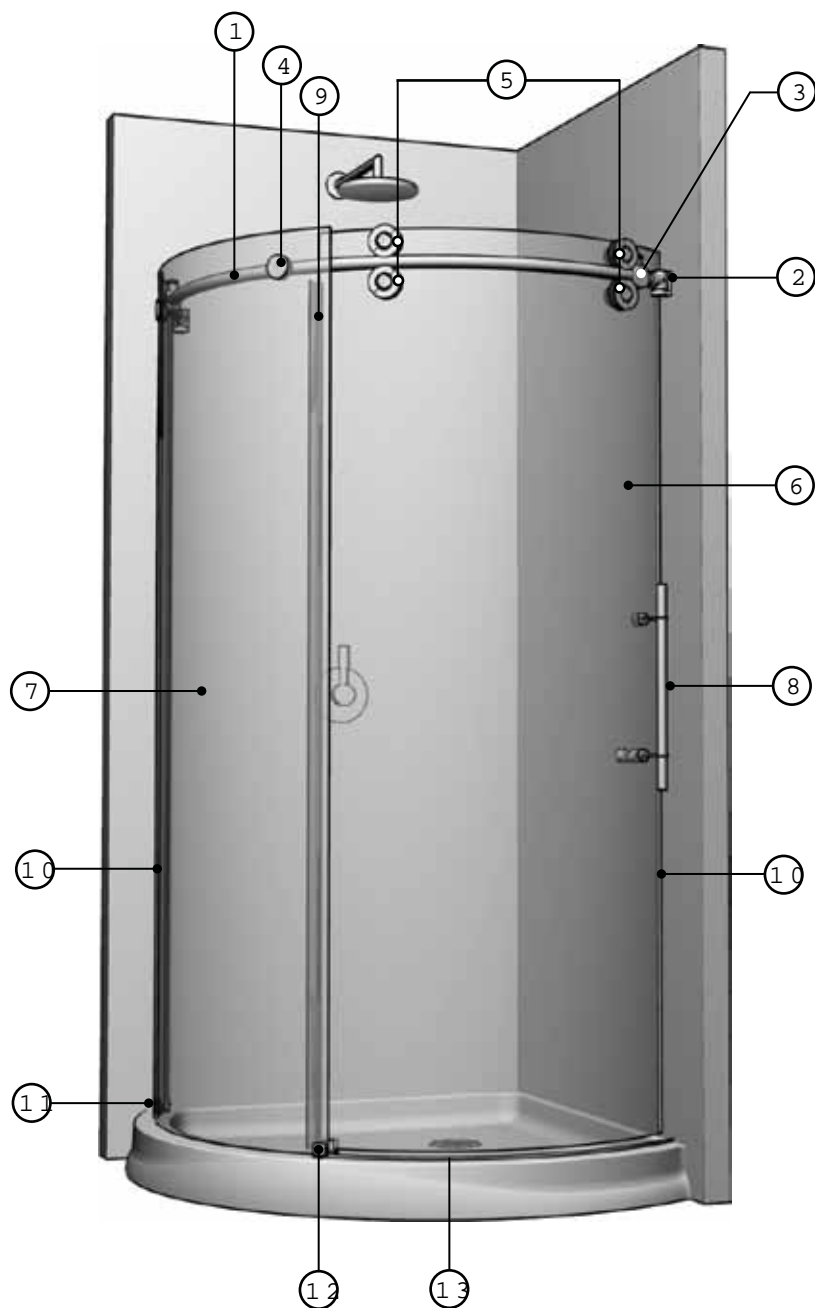
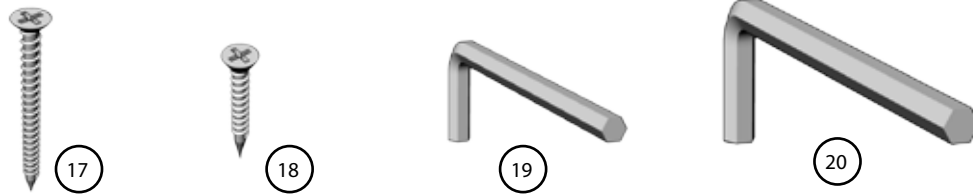


ABB40-13 / BISCUIT
ABB40-18 / WHITE

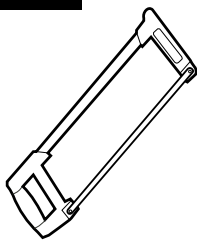
ITEM	PARTS	QTY
1	RUNNING RAIL	1
2	WALL BRACKETS	2
3	STOPPERS	2
4	GLASS FASTENERS	2
5	TWIN ROLLERS	2
6	SLIDING DOOR PANEL	1
7	FIXED PANEL	1
8	STRAIGHT HANDLE	1
9	DOOR PANEL GASKET	1
10	WALL SIDE GASKET	1
11	BOTTOM GLASS CLIP	1
12	BOTTOM CENTER GUIDE	1
13	THRESHOLD	1

HARDWARE



ITEM	HARDWARE	QTY
17	#10- 2 1/4 SCREW	4
18	#6-1 SCREW	2
19	HEX KEY 3mm	1
20	HEX KEY 6mm (7/32")	1

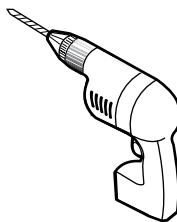
TOOLS



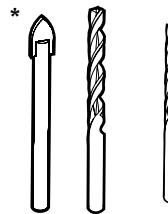
HACKSAW



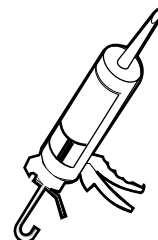
SCREWDRIVERS



DRILL



1/4" & 1/8" DRILL BITS

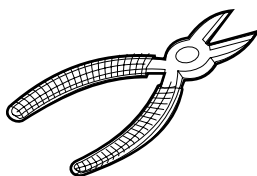


SILICONE

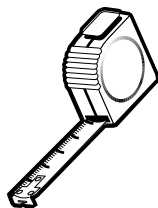
If the shower panels are to be assembled on ceramic tiles, use a 1/4" drill bit for ceramic tiles.



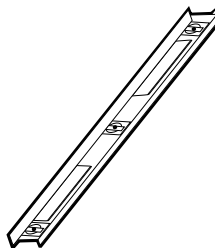
PENCIL



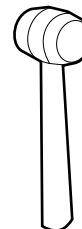
CUTTING PLIER



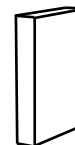
TAPE MEASURE



LEVEL



MALLET



BLOCK

! INTRODUCTION NOTE

Consider that the following instructions are intended for configuration (R). If your unit is a (L), implement these same procedures while considering that your sliding door panel will be placed to the right side and your fixed panel to the left side.

1 DOOR PANEL PLACEMENT

1A

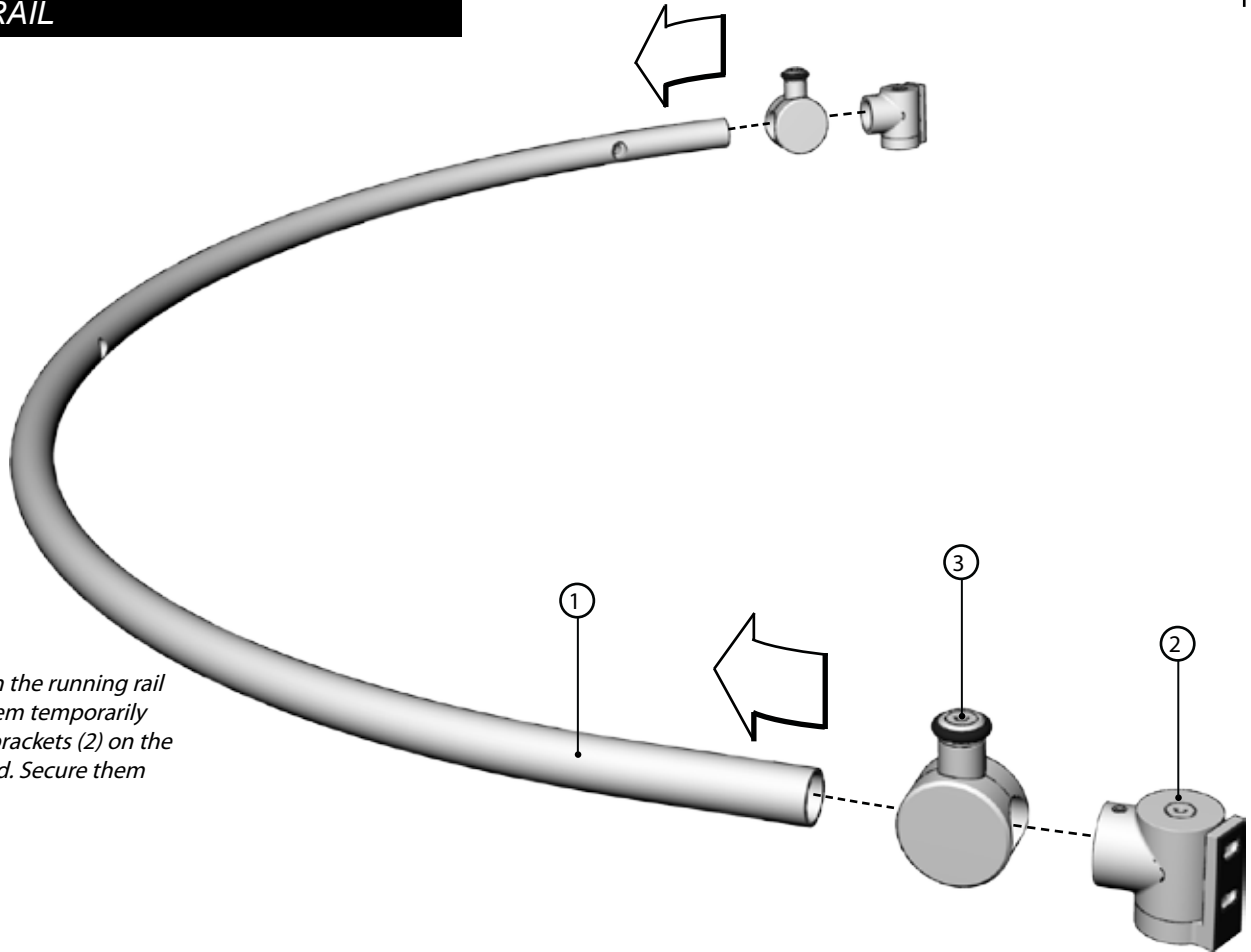
Place door panel (6) within the showering area to simplify following installation procedures. Ensure placing the panel onto a cushioned surface, such as a towel or cardboard, to prevent damage either to the panel or the base.



2 RUNNING RAIL

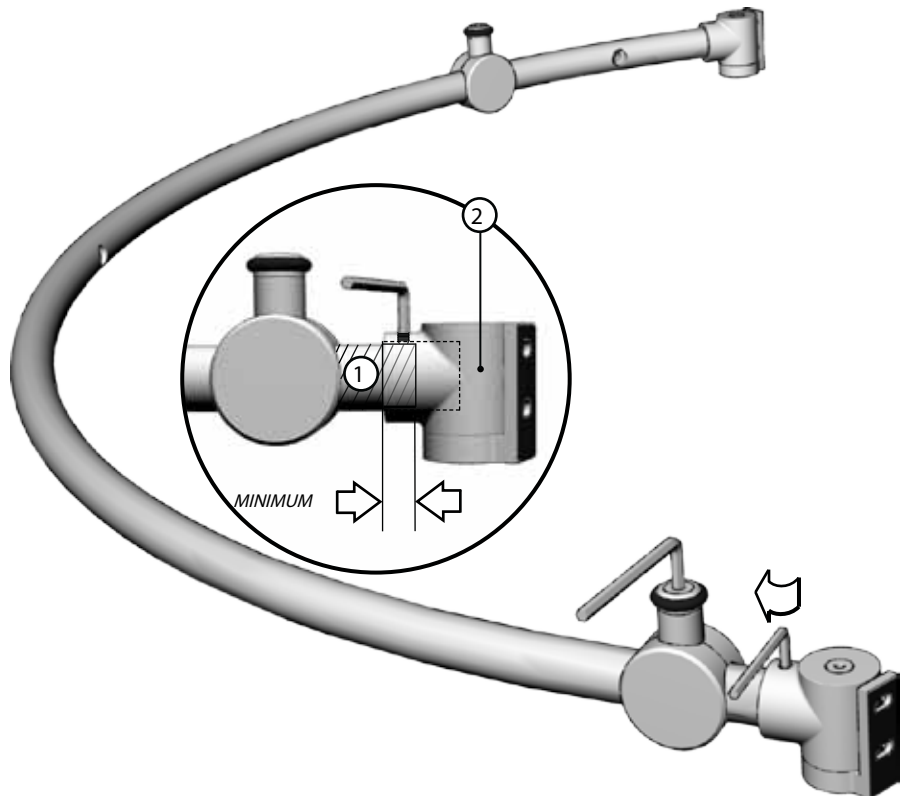
2A

Position the stoppers (3) on the running rail (1) as illustrated. Secure them temporarily in place. Position the wall brackets (2) on the running rail (1) as illustrated. Secure them temporarily in place.



2B

Temporarily secure these components in place. Ensure that the wall brackets are placed at their outmost while still allowing for the set screws to grab the running rail. This is critical to ensuring optimal unit performance.

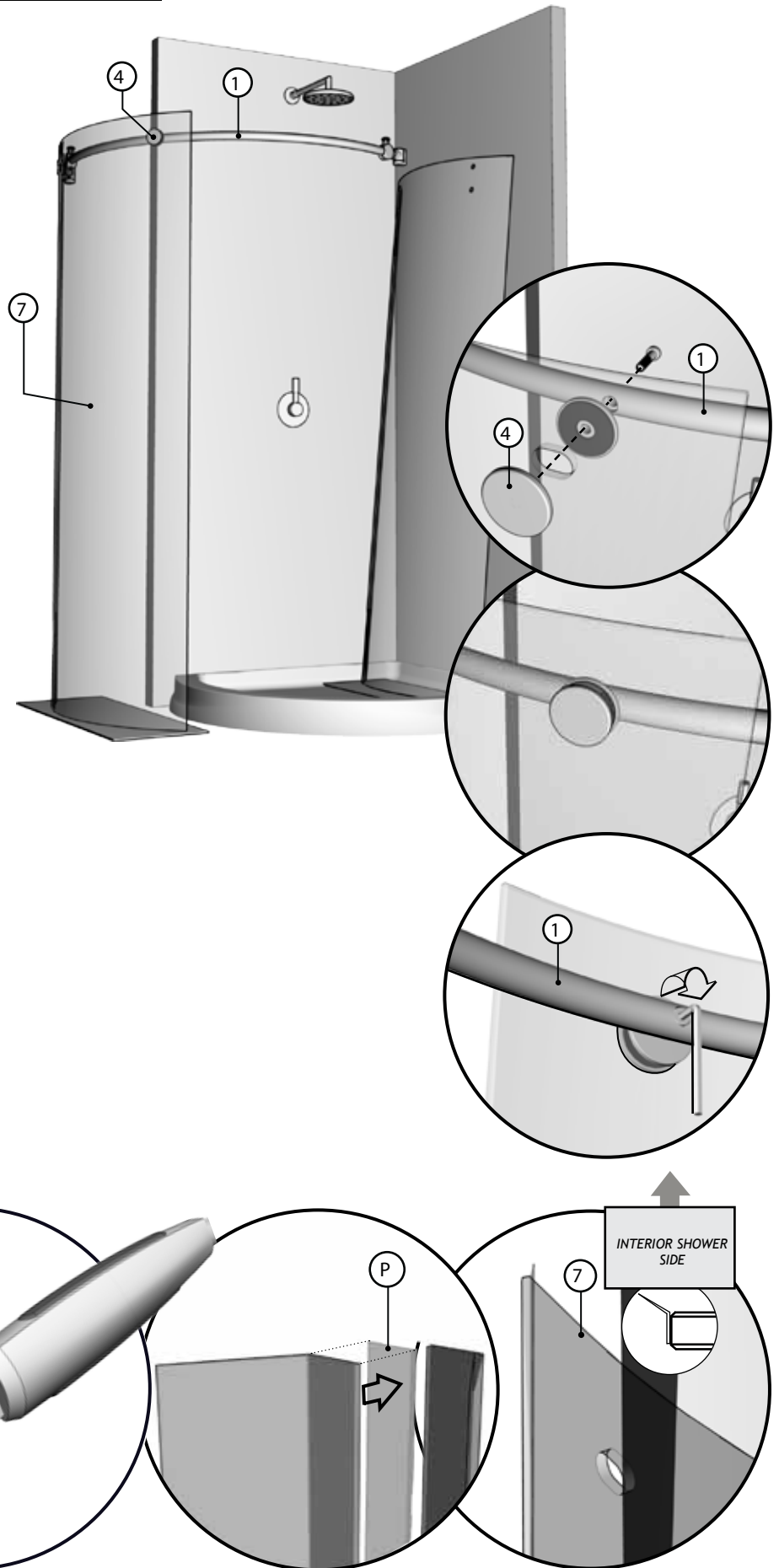


3A

Fasten the running rail (1) to the fixed panel (7) with the glass holders (4). Secure them temporarily in place.

Thoroughly clean the edge of the fixed panel (7) that will rest against the wall. This ensures that the gasket adheres to the surface. Split the door gasket (10) in two and apply the one half of the gasket on the edge of the fixed panel after having removed protective film (P).

Thoroughly clean the edge of the fixed panel (7). Split the door gasket (10) in two and apply the one half of the gasket on the edge of the fixed panel after having removed protective film (P).

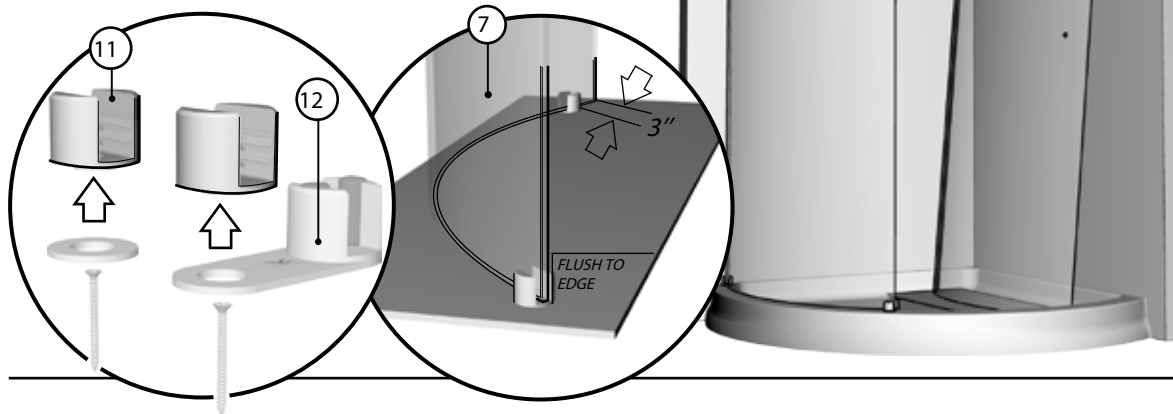


4 EMPLACEMENT DU PANNEAU FIXE

4A

Begin by removing the bottom glass clip's and bottom guide's fixed panel retainers (11) (12) from their assembly.

Position the bottom glass clip (11) and bottom guide (12) on fixed panel (7) as illustrated.



1 CONTINUED

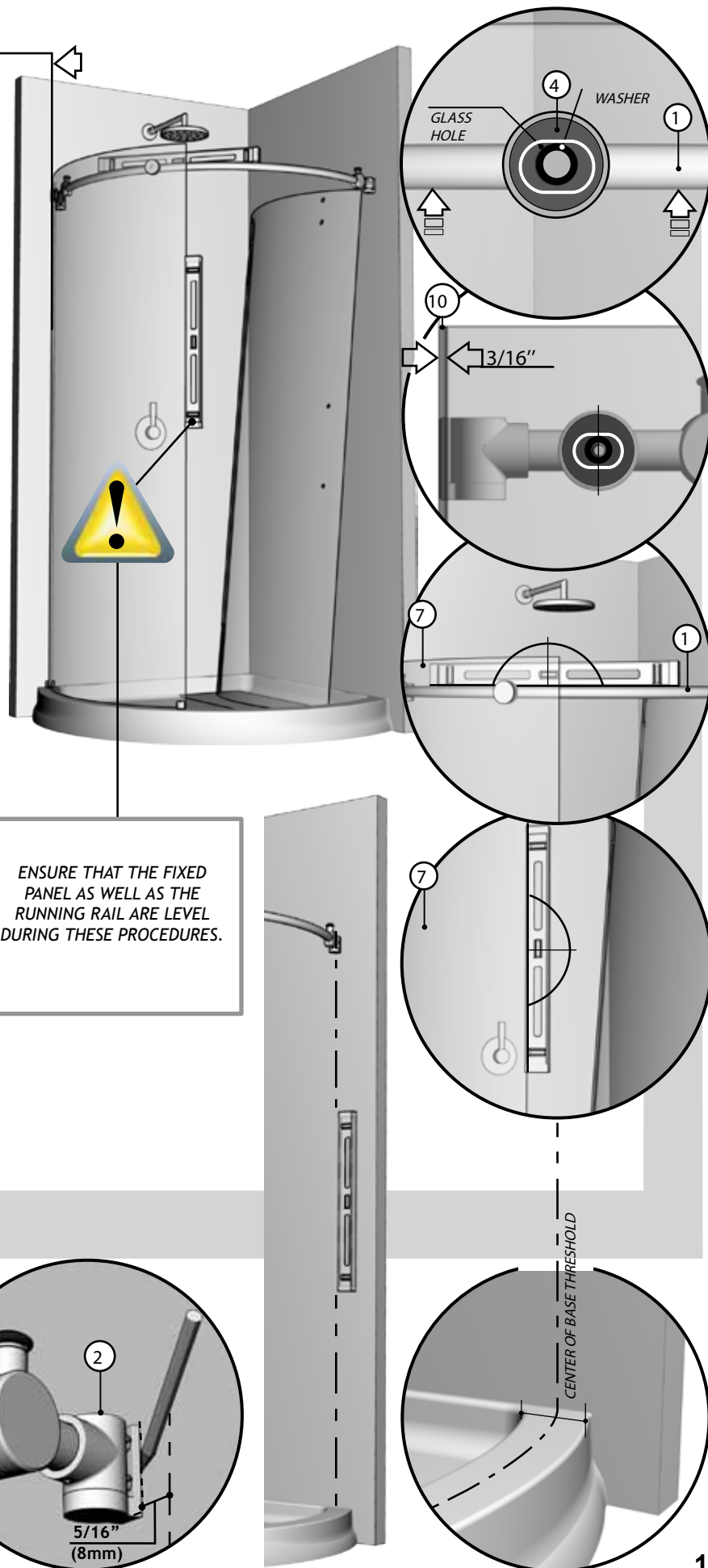
4B

Ensure that the running rail (1) is at the highest possible position in reference to the holes of the fixed panel (7). Adjust the fixed panel (7), by way of the running rail (1), so as to force the gasket (10) against the wall. The distance between the fixed panel and wall should therefore be $3/16"$.

Mark the locations for the wall brackets (2) on the walls on both sides of shower. Ensure that their horizontal positioning is as illustrated.

Mark the bottom glass clip (11) and bottom guide (12) locations on the base.

VERTICAL ALIGNMENT
OF PANEL



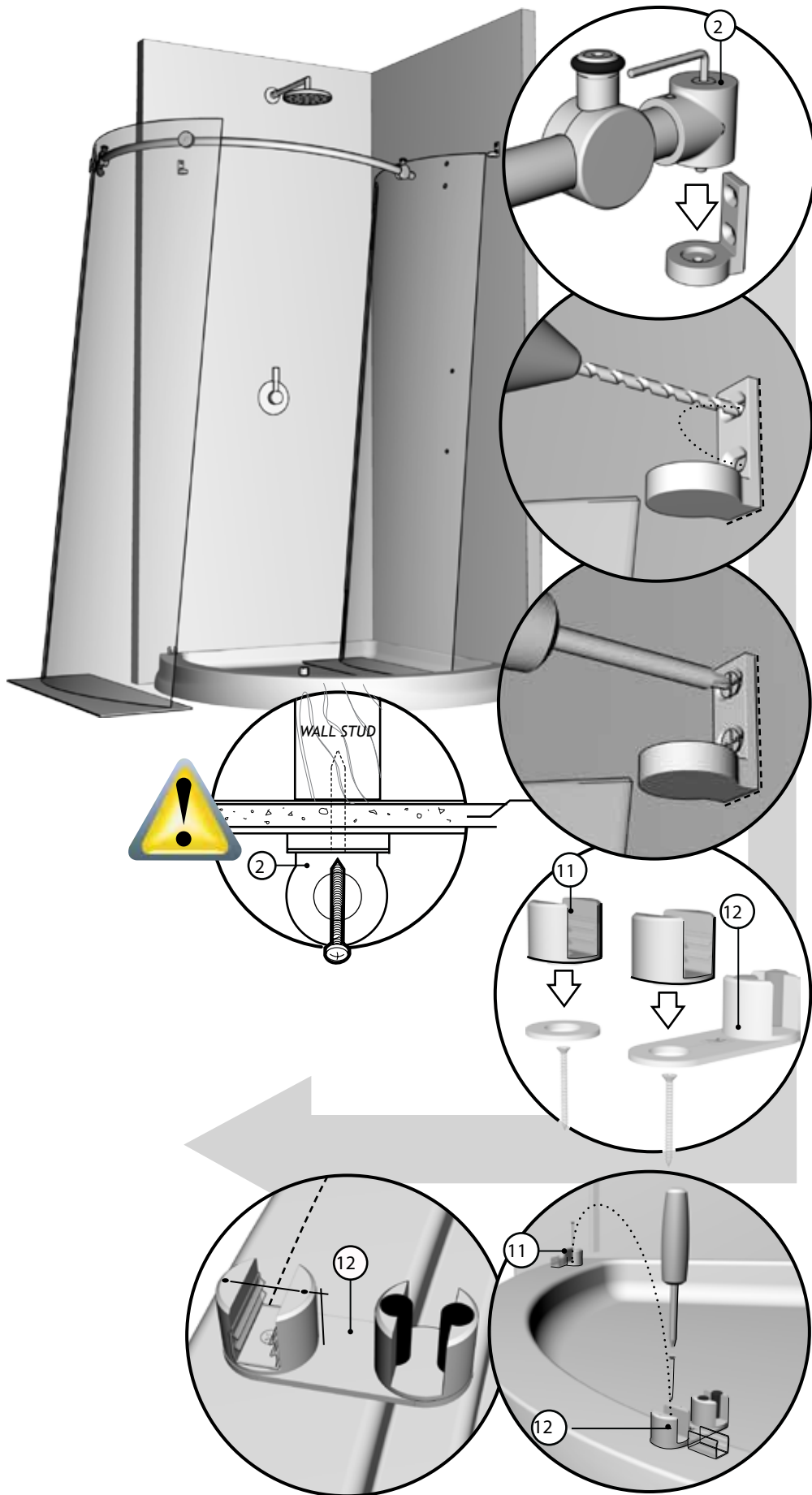
4C

Remove the fixed panel assembly (7) and carefully lean it to the side, ensure that it is placed on a protective surface. Moreover, ensure that the wall bracket supports (2) are removed to proceed.

Drill holes in walls with a drill bit, intended for ceramic tiles, through to the wall stud.

Fasten the wall brackets (2) with included screws.

Drill holes in base through the the bottom glass clip's and bottom guide's fixed panel retainers (11) (12) ensuring that they are positioned where intially marked. Use a 1/16" drill bit. Assemble retainers back into an assembly to permanently install these components onto the base. Note the alignment of the dots on the glass clip retainer of the bottom guide with the line on the bridge as shown in the final bubble.



4 CONTINUED

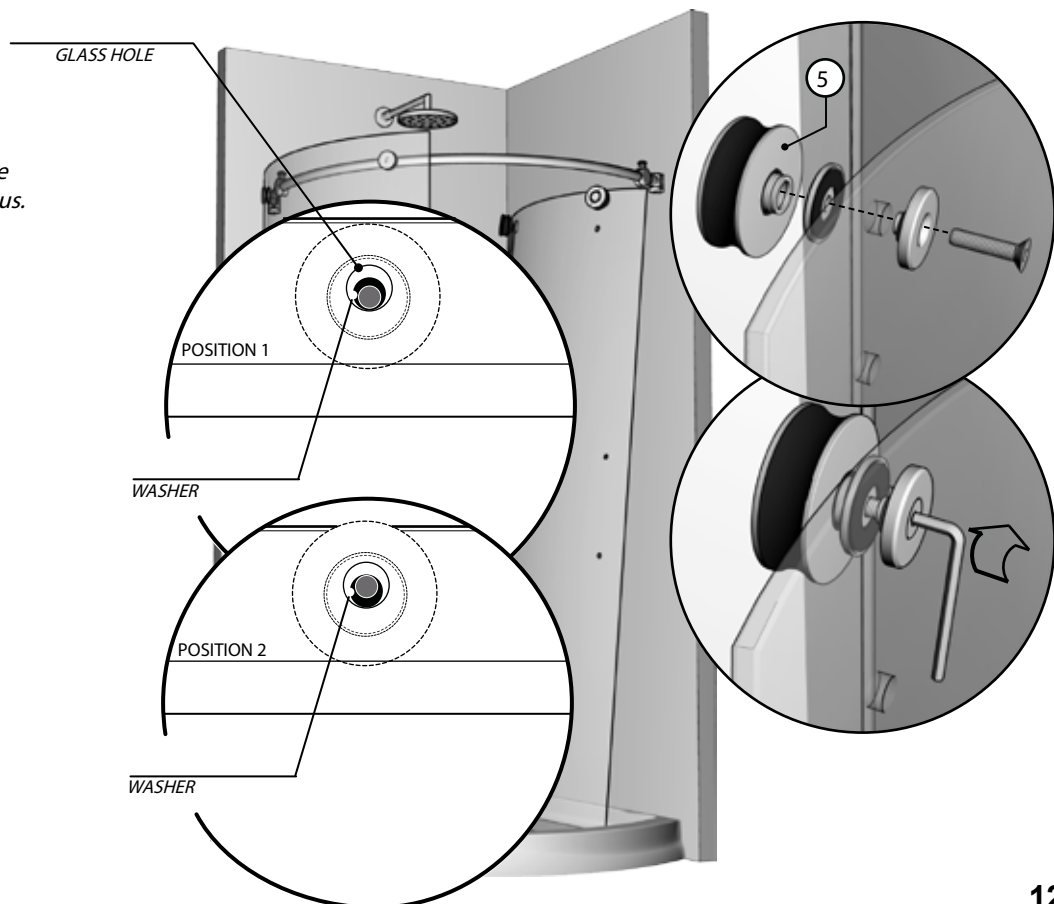
4D

Reposition the fixed panel assembly in place, ensuring that the fixed panel (7) nests within the bottom glass clip retainers (11) (12) and that the wall bracket blocks (2) insert themselves within their back plates. Permanently secure the wall brackets by way of the socket cap screws, as illustrated.



5 TOP ROLLERS INSTALLATION

Assemble a set of double rollers (5) to the door panel's (6) top holes. Note the position of the excentric washers in the illustrations. The washers are to be oriented to position 2 if in step 8 the gap between the bottom edge of the door panel and the threshold is generous. Such a gap may lead to water leakage outside the showering area.



6 DOOR PANEL PLACEMENT

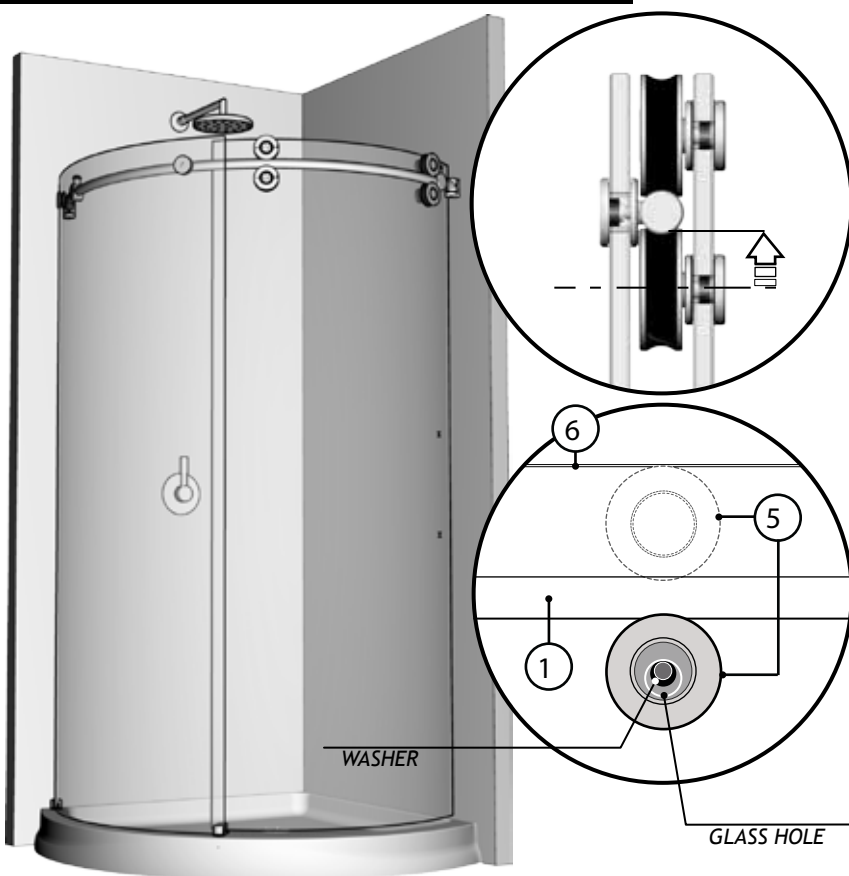
Install door panel (6), ensuring that the rollers (5) are positioned over the running rail (1). Through the use of the nonconcentric washers, adjust rollers so that the sliding door panel (6) is parallel to the fixed panel (7).

Ensure that the door panel (6) is placed within the bottom center guide (12).



7 BOTTOM ROLLERS INSTALLATION

Install the set of double rollers (5) to the bottom holes of the door panel (6), making sure that they are tangent to the running rail (1) by way of the nonconcentric washers.



8 STRAIGHT HANDLE INSTALLATION

Install straight handle (8) onto sliding door (6). Ensure that clear washers on either side of glass are installed.



9 INSTALLING DOOR PANEL GASKET

Install the door mid-gasket (9) to the door panel (6) by way of a protective block and mallet. Start from the bottom edge of the door panel and work the gasket up. Ensure that a 1/2" gap remains between the running rail (1) and the top edge of the mid-gasket (9) for clearance.



10 WALL SIDE GASKET INSTALLATION

Thoroughly clean the edge of the sliding door, closest to the side where the handle is located. Apply the door gasket (other half of gasket from Step 1) (10) to this edge of the sliding door (6).



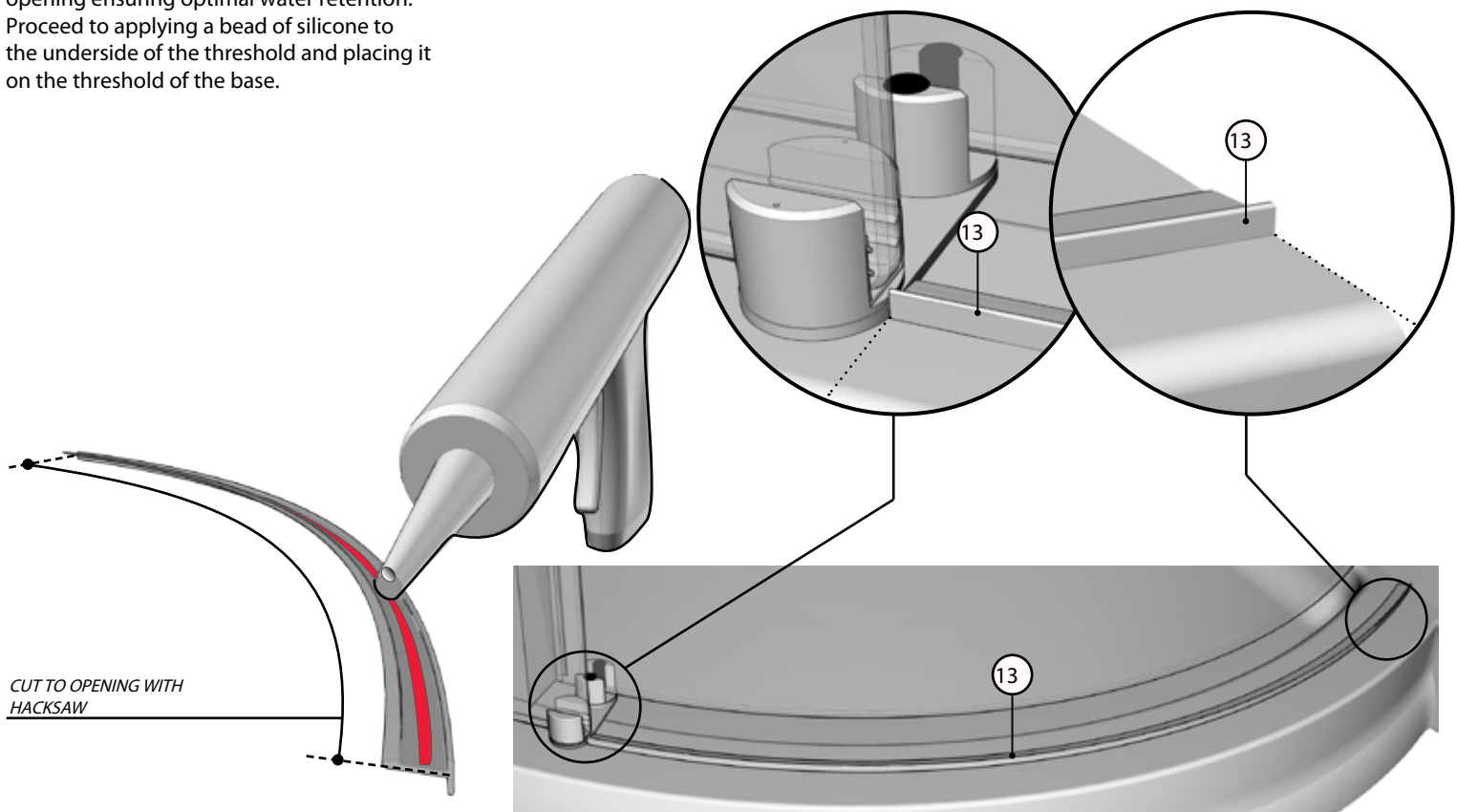
11 STOPPERS ADJUSTMENT

Adjust the position of the stoppers (3) so as to ensure a maximum opening and closing range. Ensure that the sliding door gasket (10) is forced against the wall when the door is closed.



12 THRESHOLD INSTALLATION

Cut the threshold (13) to the necessary opening ensuring optimal water retention. Proceed to applying a bead of silicone to the underside of the threshold and placing it on the threshold of the base.



13 SILICONE

Apply silicone (S) between the bottom of the fixed panel and the threshold of the base. This is done from the outside of the shower area.



24 HOURS

